

Makita

18V LXT LITHIUM-ION 3/8" CORDLESS IMPACT WRENCH

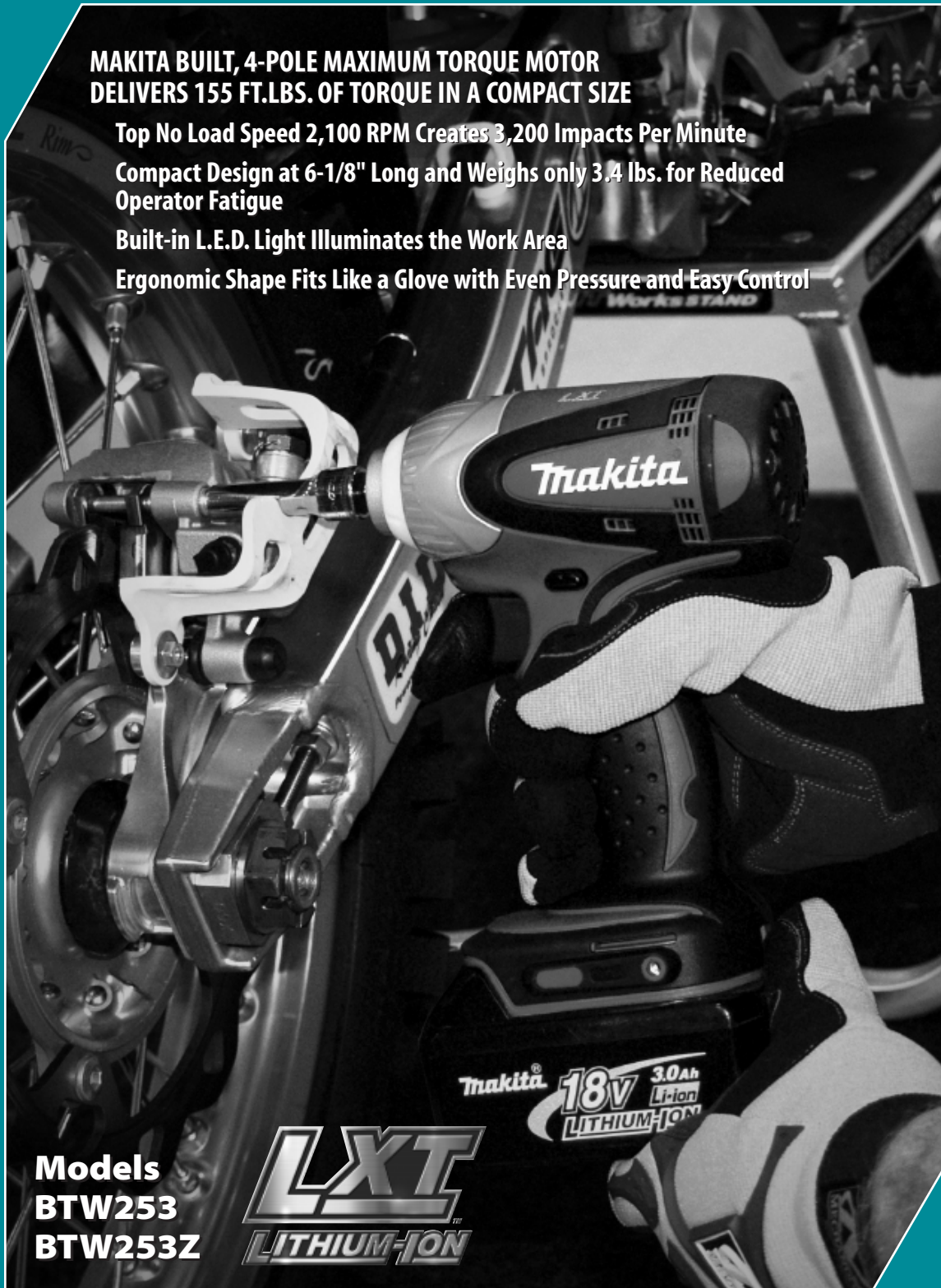
MAKITA BUILT, 4-POLE MAXIMUM TORQUE MOTOR
DELIVERS 155 FT.LBS. OF TORQUE IN A COMPACT SIZE

Top No Load Speed 2,100 RPM Creates 3,200 Impacts Per Minute

Compact Design at 6-1/8" Long and Weighs only 3.4 lbs. for Reduced Operator Fatigue

Built-in L.E.D. Light Illuminates the Work Area

Ergonomic Shape Fits Like a Glove with Even Pressure and Easy Control



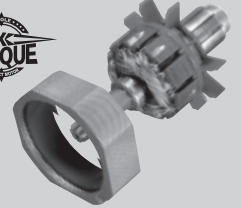
Models
BTW253
BTW253Z

LXT
LITHIUM-ION

Makita 18V 3.0Ah
LITHIUM-ION

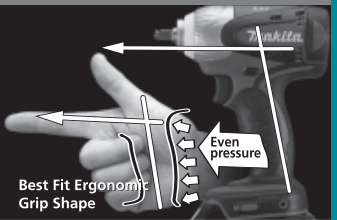
POWER

MAX
TORQUE



155 ft.lbs. of max torque from a Makita
4-pole motor (0-2,100 RPM
and 0-3,200 IPM)

COMFORT



Only 3.4 lbs. with ergonomic grip

PERFORMANCE



LXT Li-Ion batteries charge in
30 minutes, run longer and deliver
2.5X more cycles

INNOVATION



LXT battery and optimum charging
system produces 430% total
lifetime work

155 FT. LBS. OF TORQUE

18V LXT LITHIUM-ION 3/8" CORDLESS IMPACT WRENCH

Models BTW253/BTW253Z

FEATURES & BENEFITS

- Makita built, 4-pole maximum torque motor delivers 155 ft. lbs. of torque in a compact size
- Top no load speed 2,100 RPM creates 3,200 impacts per minute
- Compact design at only 6-1/8" long and weighs only 3.4 lbs. for reduced operator fatigue
- Built-in L.E.D. light illuminates the work area
- Ergonomic shape fits like a glove with even pressure and easy control
- Soft grip handle provides increased comfort on the job
- Makita Lithium-Ion battery provides longer run time, 5x lower self-discharge (for use any time) and 16 firm holding contact terminals (for constant high power)
- 30-minute rapid optimum charger communicates with the battery's built-in chip throughout the charging process to optimize battery life by actively controlling current, voltage and temperature
- 30-minute rapid optimum charger has a built-in fan to cool the battery to produce more lifetime work
- 3-year warranty on tool and 1-year warranty on battery and charger

STANDARD EQUIPMENT

- 2 ea. 18V LXT Lithium-Ion 3.0Ah battery (BL1830)
- 30-minute rapid optimum charger (DC18RA)
- Contractor bag (821007-X)
- Plastic battery cover (450128-8)

SPECIFICATIONS

| | |
|--------------------|----------------------|
| Square drive | 3/8" |
| No load speed | 0-2,100 RPM |
| Impacts per minute | 0-3,200 IPM |
| Maximum torque | 155 ft.lbs. |
| Battery | 18VDC (3.0Ah) |
| Overall length | 6-1/8" |
| Net weight | 3.4 lbs. (w/battery) |
| Shipping weight | 10.6 lbs. |
| Master carton qty. | 1 |
| UPC codes: BTW253 | 088381-090513 |
| BTW253Z | 088381-090506 |

OPTIONAL ACCESSORIES

- 9 Pc. 3/8" Impact socket set (785508-A-A)



- Optimum automotive charger (DC18SE)



Makita offers a wide variety of CORDLESS IMPACT WRENCH accessories. For a complete listing, please refer to the Makita General Catalog, or visit our website at makitatools.com, or call 1-800-4MAKITA.

All specifications subject to change without prior notice. All models and accessories subject to stock on hand.
NTF-0408-5M MA-0312-08 For more information, call 1-800-4MAKITA or visit makitatools.com

Download from www.Somanuals.com. All Manuals Search And Download.



Model BTW253



Model BTW253Z



Makita U.S.A., 14930 Northam St., La Mirada, CA 90638

Free Manuals Download Website

<http://myh66.com>

<http://usermanuals.us>

<http://www.somanuals.com>

<http://www.4manuals.cc>

<http://www.manual-lib.com>

<http://www.404manual.com>

<http://www.luxmanual.com>

<http://aubethermostatmanual.com>

Golf course search by state

<http://golfingnear.com>

Email search by domain

<http://emailbydomain.com>

Auto manuals search

<http://auto.somanuals.com>

TV manuals search

<http://tv.somanuals.com>