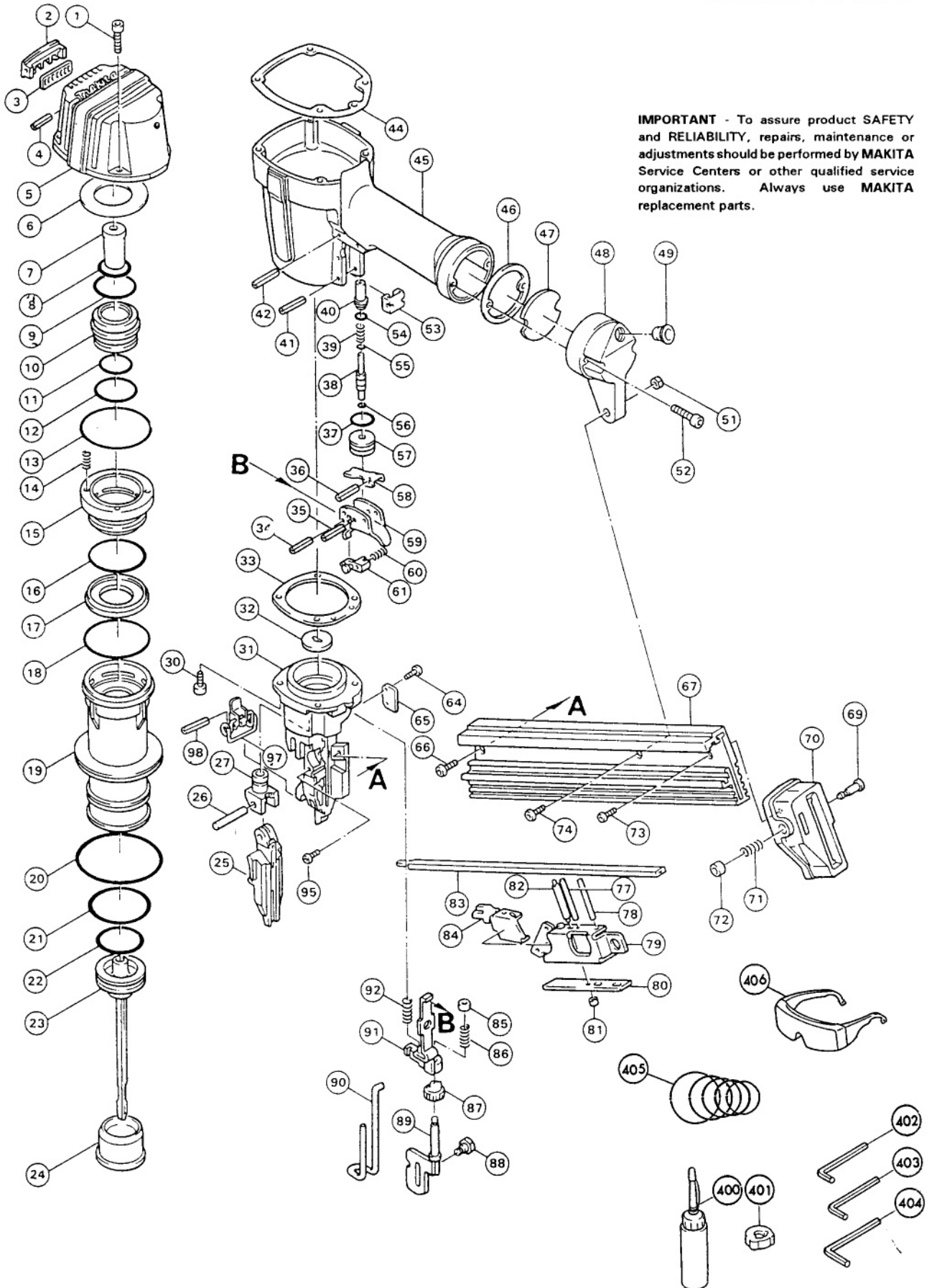




PNEUMATIC FINISH NAILER, 15gauge Model AF631



| Fig. | Part No. | Qty. Used | Description | Fig. | Part No. | Qty. Used | Description |
|------|----------|-----------|---|--------------------|----------|-----------|----------------------|
| 1 | 922232-8 | 4 | H.S.H. BOLT M5x20 | 52 | 922242-5 | 2 | H.S.H. BOLT M5x25 |
| 2 | 414957-3 | 1 | COVER | 53 | 343879-9 | 1 | HOLDER |
| 3 | 415235-4 | 1 | MUFFLER | 54 | 213030-4 | 1 | O RING 8 |
| 4 | 258018-7 | 2 | SPRING PIN 2.5-9 | 55 | 213028-1 | 1 | O RING 2 |
| 5 | 151435-9 | 1 | TOP CAP Cpl. (Incl. 421403-9, Top Cap Bumper) | 56 | 213028-1 | 1 | O RING 2 |
| 6 | 261093-4 | 1 | URETHANE WASHER 32 | 57 | 322380-7 | 1 | TRIGGER VALVE CASE |
| 7 | 421399-4 | 1 | CUSHION R | 58 | 344258-4 | 1 | IDLER |
| 8 | 213416-2 | 1 | O RING 26 | 59 | 165133-9 | 1 | TRIGGER |
| 9 | 213462-5 | 1 | O RING 33 | 60 | 233036-6 | 1 | COMPRESSION SPRING 5 |
| 10 | 414935-3 | 1 | MAIN VALVE | 61 | 311895-9 | 1 | CHANGE LEVER |
| 11 | 213424-3 | 1 | O RING 27 | 64 | 265373-0 | 1 | H.S.H. BOLT M4x8 |
| 12 | 213423-5 | 1 | O RING 30 | 65 | 344217-8 | 1 | GUIDE PLATE |
| 13 | 213665-1 | 1 | O RING 56 | 66 | 266075-1 | 1 | H.S.H. BOLT M5x6 |
| 14 | 233038-2 | 4 | COMPRESSION SPRING 5 | 67 | 331465-8 | 1 | MAGAZINE |
| 15 | 316380-7 | 1 | SUB VALVE | 69 | 268001-6 | 1 | PIN 5 |
| 16 | 213558-2 | 1 | O RING 42 | 70 | 415668-3 | 1 | MAGAZINE CAP |
| 17 | 421400-5 | 1 | VALVE SHEET | 71 | 231311-4 | 1 | COMPRESSION SPRING 7 |
| 18 | 213604-1 | 1 | O RING 50 | 72 | 262534-3 | 1 | RUBBER SLEEVE 4 |
| 19 | 316379-2 | 1 | CYLINDER | 73 | 266074-3 | 1 | H.S.H. BOLT M4x8 |
| 20 | 213706-3 | 1 | O RING 67 | 74 | 266076-9 | 1 | H.S.H. BOLT M5x10 |
| 21 | 213613-0 | 1 | O RING 45 | 77 | 256833-3 | 1 | ROD 3 |
| 22 | 213475-6 | 1 | O RING 34 | 78 | 256834-1 | 1 | ROD 4 |
| 23 | 150545-9 | 1 | DRIVER Cpl. | 79 | 151455-3 | 1 | PUSHER COVER |
| 24 | 421491-6 | 1 | CUSHION F | 80 | 344218-6 | 1 | STOP PLATE |
| 25 | 150617-0 | 1 | DOOR | 81 | 262533-5 | 2 | URETHANE SLEEVE 3 |
| 26 | 256756-5 | 1 | PIN 4-30 | 82 | 256440-2 | 1 | PIN 2-4 |
| 27 | 311977-7 | 1 | DOOR PUSHER | 83 | 344214-4 | 1 | MAGAZINE RAIL |
| 30 | 265973-6 | 4 | H.S.H. BOLT M5x20 | 84 | 344215-2 | 1 | PUSHER |
| 31 | 310025-9 | 1 | DRIVER GUIDE | 85 | 262534-3 | 1 | RUBBER SLEEVE 4 |
| 32 | 344213-6 | 1 | DRIVER PLATE | 86 | 233127-3 | 1 | COMPRESSION SPRING 7 |
| 33 | 442108-8 | 1 | DRIVER GUIDE GASKET | 87 | 311896-7 | 1 | ADJUSTER |
| 34 | 951072-7 | 1 | SPRING PIN 3-24 | 88 | 265430-4 | 1 | HEX. BOLT M5 |
| 35 | 258004-8 | 1 | SPRING PIN 2.5-16 | 89 | 165147-8 | 1 | SLIDER |
| 36 | 258004-8 | 1 | SPRING PIN 2.5-16 | 90 | 322800-1 | 1 | CONTACT TOP |
| 37 | 213218-6 | 1 | O RING 16 | 91 | 165114-3 | 1 | CONTACT ARM |
| 38 | 322530-4 | 1 | TRIGGER VALVE STEM | 92 | 233128-1 | 1 | COMPRESSION SPRING 7 |
| 39 | 233035-8 | 1 | COMPRESSION SPRING 3 | 95 | 265373-0 | 2 | H.S.H. BOLT M4x8 |
| 40 | 322531-2 | 1 | PILOT VALVE | 97 | 163375-9 | 1 | LATCH |
| 41 | 951072-7 | 1 | SPRING PIN 3-24 | 98 | 951072-7 | 1 | SPRING PIN 3-24 |
| 42 | 258020-0 | 2 | SPRING PIN 2.5-22 | ACCESSORIES | | | |
| 44 | 442109-6 | 1 | TOP CAP GASKET | 400 | 181434-7 | 1 | OIL SUPPLY |
| 45 | 159799-5 | 1 | HOUSING Cpl. (Incl. 1 ea. 421401-3, Housing Bumper R; & 421402-1, Housing Bumper L) | 401 | 421508-5 | 1 | NOSE CAP |
| 46 | 442110-1 | 1 | INLET CAP GASKET | 402 | 783208-8 | 1 | HEX. WRENCH 2.5 |
| 47 | 413054-2 | 1 | INLET FILTER | 403 | 783201-2 | 1 | HEX WRENCH 3 |
| 48 | 150547-5 | 1 | INLET CAP Cpl. | 404 | 783202-0 | 1 | HEX WRENCH 4 |
| 49 | 286219-7 | 1 | CAP 12 | 405 | 192393-0 | 1 | FIRST AID KIT |
| 51 | 931202-6 | 1 | HEX. NUT M5 | 406 | 1922A | 1 | SAFETY GLASSES |

Free Manuals Download Website

<http://myh66.com>

<http://usermanuals.us>

<http://www.somanuals.com>

<http://www.4manuals.cc>

<http://www.manual-lib.com>

<http://www.404manual.com>

<http://www.luxmanual.com>

<http://aubethermostatmanual.com>

Golf course search by state

<http://golfingnear.com>

Email search by domain

<http://emailbydomain.com>

Auto manuals search

<http://auto.somanuals.com>

TV manuals search

<http://tv.somanuals.com>