

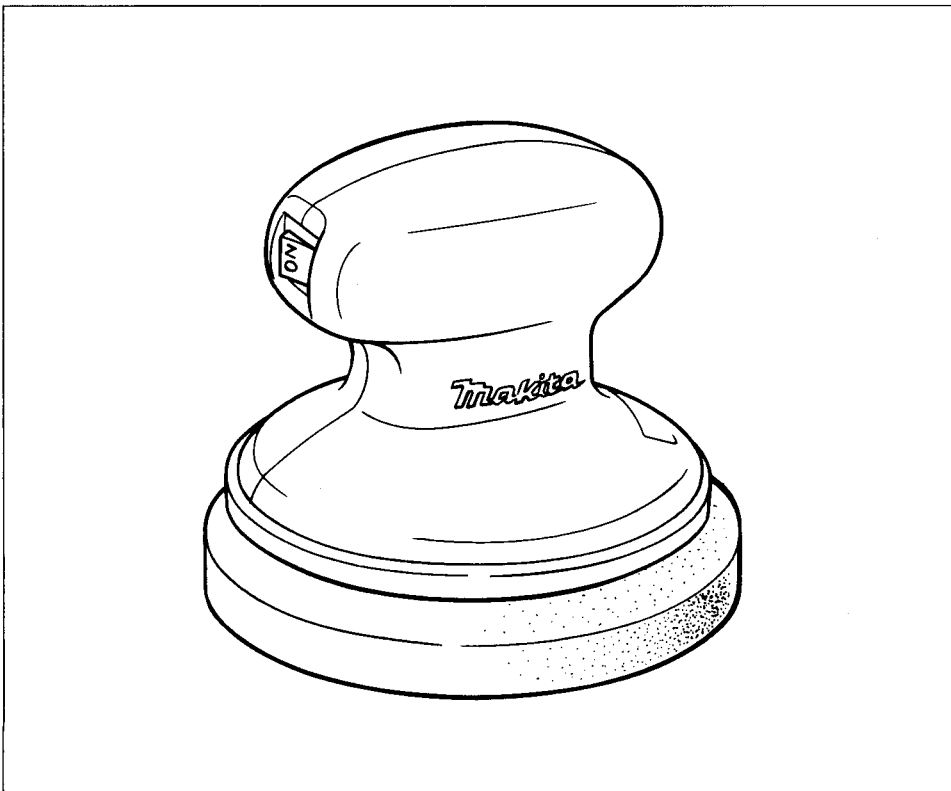
Makita

アメリカ

Wax-Mate

MODEL 9200Y

INSTRUCTION MANUAL



SPECIFICATIONS

Sponge dia.	Orbits per min.	Dimensions (Dia. x Height)	Net weight
125 mm (5")	7,000	114 mm x 95 mm (4-1/2" x 3-3/4")	0.5 kg (1.1 lbs)

- * Manufacturer reserves the right to change specifications without notice.
- Note: Specifications may differ from country to country.

IMPORTANT SAFETY INSTRUCTIONS

(For All Tools)

READ ALL INSTRUCTIONS.

- 1. KEEP WORK AREA CLEAN.** Cluttered areas and benches invite injuries.
- 2. GUARD AGAINST ELECTRIC SHOCK.** Prevent body contact with grounded surfaces. For example; pipes, radiators, ranges, refrigerator enclosures.
- 3. KEEP CHILDREN AWAY.** Do not let visitors contact tool or extension cord. All visitors should be kept away from work area.
- 4. STORE IDLE TOOLS.** When not in use, tools should be stored in dry, and high or locked-up place — out of reach of children.
- 5. DON'T FORCE TOOL.** It will do the job better and safer at the rate for which it was intended.
- 6. USE RIGHT TOOL.** Don't force small tool or attachment to do the job of a heavy-duty tool. Don't use tool for purpose not intended — for example — don't use circular saw for cutting tree limbs or logs.
- 7. DRESS PROPERLY.** Do not wear loose clothing or jewelry. They can be caught in moving parts. Rubber gloves and non-skid footwear are recommended when working outdoors. Wear protective hair covering to contain long hair.
- 8. USE SAFETY GLASSES.** Also use face or dust mask if cutting operation is dusty.
- 9. SECURE WORK.** Use clamps or a vise to hold work. It's safer than using your hand and it frees both hands to operate tool.
- 10. DON'T OVERREACH.** Keep proper footing and balance at all times.
- 11. DISCONNECT TOOLS.** When not in use, before servicing, and when changing accessories, such as blades, bits, cutters.
- 12. REMOVE ADJUSTING KEYS AND WRENCHES.** Form habit of checking to see that keys and adjusting wrenches are removed from tool before turning it on.
- 13. AVOID UNINTENTIONAL STARTING.** Don't carry tool with finger on switch. Be sure switch is off when plugging in.
- 14. STAY ALERT.** Watch what you are doing. Use common sense. Do not operate tool when you are tired.

15. CHECK DAMAGED PARTS. Before further use of the tool, a guard or other part that is damaged should be carefully checked to determine that it will operate properly and perform its intended function. Check for alignment of moving parts, binding of moving parts, breakage of parts, mounting, and any other conditions that may affect its operation. A guard or other part that is damaged should be properly repaired or replaced by an authorized service center unless otherwise indicated elsewhere in this instruction manual. Have defective switches replaced by authorized service center. Do not use tool if switch does not turn it on and off.

ADDITIONAL SAFETY RULES

- 1. Use only 12 volt DC power source, or the motor will be damaged.**
- 2. Operate the tool only after removing mud and sand from the car body and sponge, or the car body will be scratched by mud and sand.**
- 3. Do not wet the tool, or the tool will be damaged.**
- 4. Do not bear down the tool excessively during operation. Smooth and even operation cannot be performed because the bottom of the sponge will not move correctly as designed.**
- 5. Do not place the tool directly on the ground. Mud and/or sand may stick to the sponge and scratch the car body.**
- 6. Do not place the tool on the car body, the tool may fall from the car body and be damaged or cause damage to the car. Use the plastic case as explained on page 6.**
- 7. Do not leave the tool in hot places such as a car exposed to direct sunlight and with the doors and windows closed. This can cause discoloration and/or damage to the tool enclosures.**
- 8. Wipe the tool off with a soft cloth dampened in detergent solution. Never use thinner or benzine. This can cause discoloration and cracks in the tool enclosures.**
- 9. Let the engine of the car idle to maintain the charge in the car's battery when using the tool for a long time.**

SAVE THESE INSTRUCTIONS.

Installing sponge

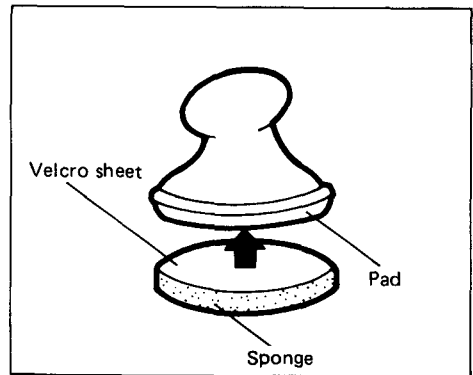
CAUTION:

Always be sure that the tool is switched off and unplugged before installing or removing the sponge.

Simply attach the sponge to the pad, using the velcro sheet on the sponge and the pad.

(Note)

There is no problem even if the alignment of the sponge and the pad is slightly off. So you do not have to align the center of the sponge to the center of the pad accurately when installing the sponge.

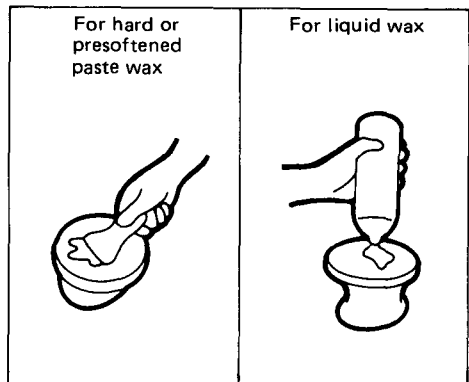


Applying wax to sponge

Apply wax to the entire surface of sponge thin and evenly.

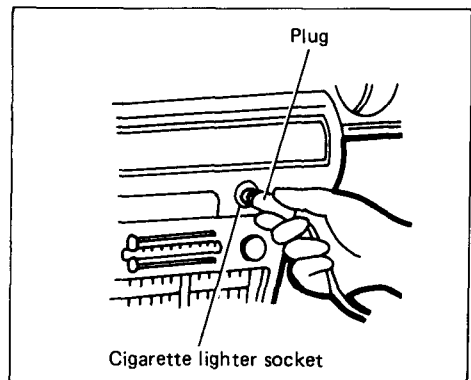
(Note)

When applying hard or presoftened paste wax to the sponge, use the spatula provided.



Connecting to power source

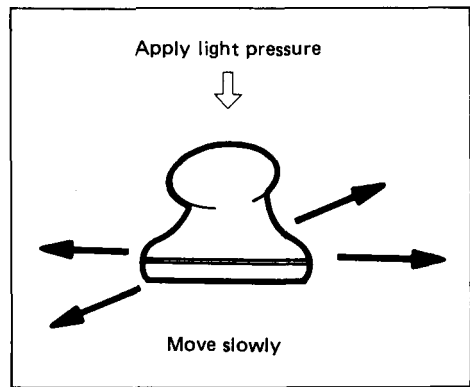
Be sure that the tool's switch is off. Then insert its plug into the cigarette lighter socket of your car.



Operation

1. Waxing

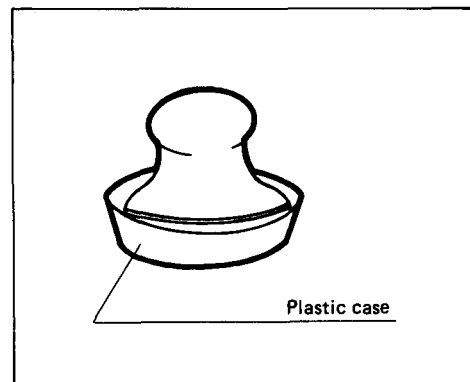
Switch on the tool. Move the tool slowly over the work surface with front to back, side to side movement while applying light pressure to the tool so that wax will be applied to the work surface thin and evenly.



(Note)

- Do not bear down the tool excessively during operation. Smooth and even waxing cannot be performed because the bottom of the sponge will not move correctly as designed.
- The tool may become hot during operation. This is a normal condition and does not indicate a problem.

When resting the tool, use the handy plastic case provided so that mud and/or sand will not stick to the sponge.



Buff the dried wax by rubbing the car body surface with a clean, soft and dry cloth.

2. Removing stubborn dirt and oil film

For removing stubborn dirt from the car body surface and oil film from the windshield, apply the appropriate polish/cleaner for the application to the sponge and operate the tool in the same manner as waxing.

(Note)

When changing from the use of wax, polish or cleaner, always wash the sponge in detergent solution before starting the next job.

MAINTENANCE

CAUTION:

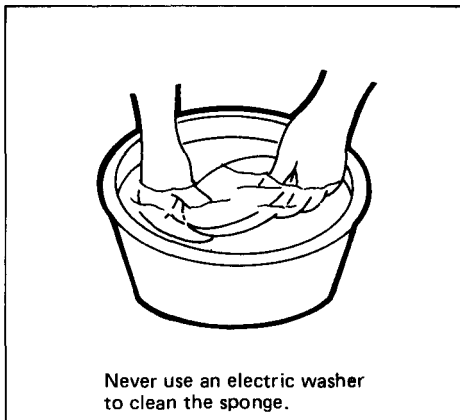
Always be sure that the tool is switched off and unplugged before attempting to perform inspection and maintenance.

After use

Always remove the sponge from the tool and wash the sponge in detergent solution. Dry the sponge thoroughly in a breezy shaded area.

(Note)

- If you do not wash the sponge after each use, the wax absorbed in the sponge will dry and the sponge will become heavier, less porous and dirty. This could cause greater vibration of the tool, resulting poor finish.



- Do not wash the sponge too harshly, or the velcro sheet on the sponge will come off.

Wipe the tool off with the soft cloth dampened in detergent solution. Never use thinner or benzine.

Storage

Before storing the tool, remove moisture from the tool and dry the sponge thoroughly.

(Note)

Store the tool with the sponge removed, or the sponge may be deformed.

To maintain product SAFETY and RELIABILITY, repairs, maintenance or adjustment should be performed by Makita Authorized or Factory Service Centers, always using Makita replacement parts.

ACCESSORIES

CAUTION:

These accessories or attachments are recommended for use with your Makita tool specified in this manual. The use of any other accessories or attachments might present a risk of injury to persons. The accessories or attachments should be used only in the proper and intended manner.

- **Spatula**

Part No. 414599-3



- **Waxing sponge**

Part No. 794498-8



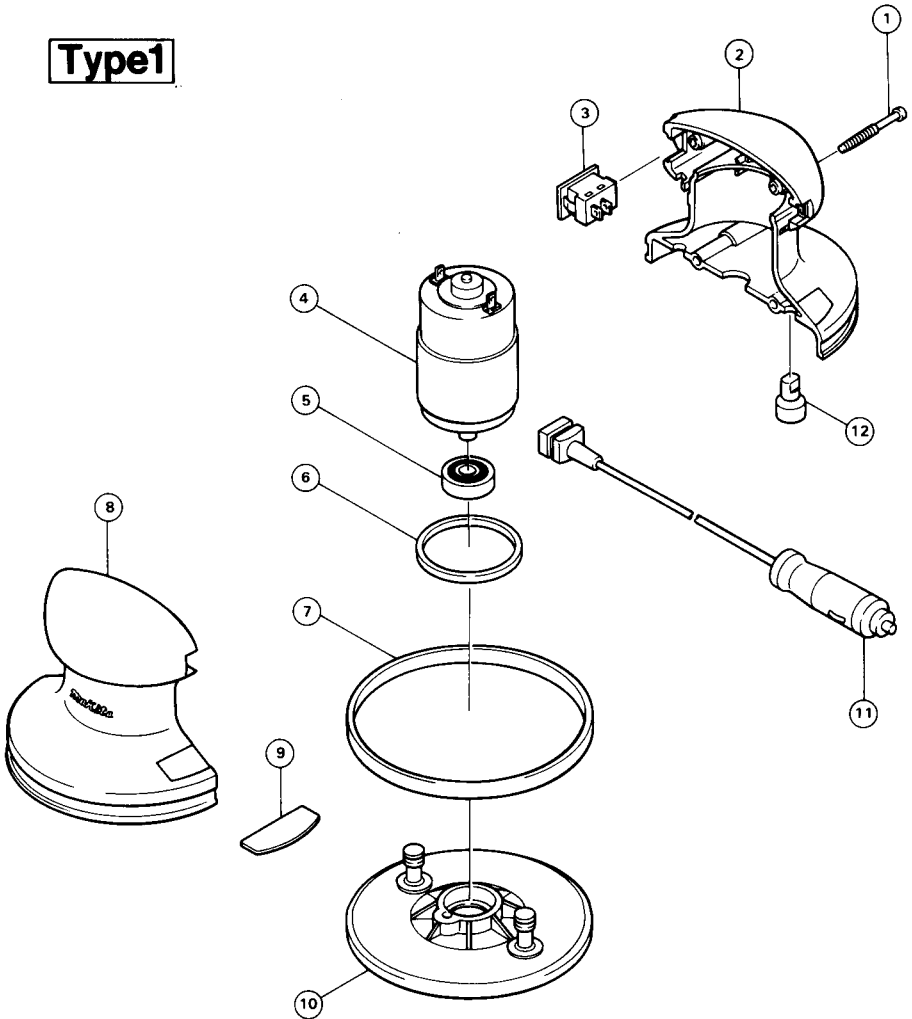
- **Plastic case**

Part No. 824334-5



WAX-MATE Model 9200Y

Type1



Note: The switch and other part configurations may differ from country to country.

ITEM NO.	NO. USED	DESCRIPTION	ITEM NO.	NO. USED	DESCRIPTION
MACHINE			MACHINE		
1	4	Tapping Screw BT 4x35	7	1	Bumper
2	1	Housing Set (With Item 8)	8	1	Housing Set (With Item 2)
3	1	Switch	9	1	Name Plate
4	1	DC Motor 12 V.	10	1	Pad
5	1	Ball Bearing 609LB	11	1	Cord
6	1	Cushion Ring	12	2	Foot (A)

Note: The switch and other part specifications may differ from country to country.



MAKITA LIMITED ONE YEAR WARRANTY

Warranty Policy

Every Makita tool is thoroughly inspected and tested before leaving the factory. It is warranted to be free of defects from workmanship and materials for the period of ONE YEAR from the date of original purchase. Should any trouble develop during this one-year period, return the COMPLETE tool, freight prepaid, to one of Makita's Factory or Authorized Service Centers. If inspection shows the trouble is caused by defective workmanship or material, Makita will repair (or at our option, replace) without charge.

This Warranty does not apply where:

- repairs have been made or attempted by others;
- repairs are required because of normal wear and tear;
- The tool has been abused, misused or improperly maintained;
- alterations have been made to the tool.

IN NO EVENT SHALL MAKITA BE LIABLE FOR ANY INDIRECT, INCIDENTAL OR CONSEQUENTIAL DAMAGES FROM THE SALE OR USE OF THE PRODUCT. THIS DISCLAIMER APPLIES BOTH DURING AND AFTER THE TERM OF THIS WARRANTY.

MAKITA DISCLAIMS LIABILITY FOR ANY IMPLIED WARRANTIES, INCLUDING IMPLIED WARRANTIES OF "MERCHANTABILITY" AND "FITNESS FOR A SPECIFIC PURPOSE," AFTER THE ONE-YEAR TERM OF THIS WARRANTY.

This Warranty gives you specific legal rights, and you may also have other rights which vary from state to state. Some states do not allow the exclusion or limitation of incidental or consequential damages, so the above limitation or exclusion may not apply to you. Some states do not allow limitation on how long an implied warranty lasts, so the above limitation may not apply to you.

Makita Corporation

3-11-8, Sumiyoshi-cho,
Anjo, Aichi 446 Japan

883735A068

PRINTED IN JAPAN
1992 — 7 — N

Free Manuals Download Website

<http://myh66.com>

<http://usermanuals.us>

<http://www.somanuals.com>

<http://www.4manuals.cc>

<http://www.manual-lib.com>

<http://www.404manual.com>

<http://www.luxmanual.com>

<http://aubethermostatmanual.com>

Golf course search by state

<http://golfingnear.com>

Email search by domain

<http://emailbydomain.com>

Auto manuals search

<http://auto.somanuals.com>

TV manuals search

<http://tv.somanuals.com>