

# Makita

アメリカ

## Belt Sander

76 mm (3") MODEL 9900B

### INSTRUCTION MANUAL



#### Specifications

Belt size	Belt speed	Continuous rating (Input)	Overall length	Net weight	Power supply cord
76 mm x 533 mm (3") x (21")	360 m /min. (1,180 ft.)	850 W	316 mm (12-1/2")	4.6 kg (10.1 lbs)	5 m (16.4 ft.)

\* Manufacturer reserves the right to change specifications of parts and accessories without notice.

\* Note: Specifications of parts and accessories may differ from country to country.

# **IMPORTANT SAFETY INSTRUCTIONS**

## **(For All Tools)**

**WARNING: WHEN USING ELECTRIC TOOLS, BASIC SAFETY PRECAUTIONS SHOULD ALWAYS BE FOLLOWED TO REDUCE THE RISK OF FIRE, ELECTRIC SHOCK, AND PERSONAL INJURY, INCLUDING THE FOLLOWING:**

### **READ ALL INSTRUCTIONS.**

- 1. KEEP WORK AREA CLEAN.** Cluttered areas and benches invite injuries.
- 2. CONSIDER WORK AREA ENVIRONMENT.** Don't use power tools in damp or wet locations. Keep work area well lit. Don't expose power tools to rain. Don't use tool in presence of flammable liquids or gases.
- 3. KEEP CHILDREN AWAY.** All visitors should be kept away from work area. Don't let visitors contact tool or extension cord.
- 4. STORE IDLE TOOLS.** When not in use, tools should be stored in dry, and high or locked-up place — out of reach of children.
- 5. DON'T FORCE TOOL.** It will do the job better and safer at the rate for which it was intended.
- 6. USE RIGHT TOOL.** Don't force small tool or attachment to do the job of a heavy-duty tool. Don't use tool for purpose not intended; for example, don't use circular saw for cutting tree limbs or logs.
- 7. DRESS PROPERLY.** Don't wear loose clothing or jewelry. They can be caught in moving parts. Rubber gloves and non-skid footwear are recommended when working outdoors. Wear protective hair covering to contain long hair.
- 8. USE SAFETY GLASSES.** Also use face or dust mask if cutting operation is dusty.
- 9. DON'T ABUSE CORD.** Never carry tool by cord or yank it to disconnect from receptacle. Keep cord from heat, oil, and sharp edges.
- 10. SECURE WORK.** Use clamps or a vise to hold work. It's safer than using your hand and it frees both hands to operate tool.
- 11. DON'T OVERREACH.** Keep proper footing and balance at all times.
- 12. MAINTAIN TOOLS WITH CARE.** Keep tools sharp and clean for better and safer performance. Follow instructions for lubricating and changing accessories. Inspect tool cords periodically and if damaged, have repaired by authorized service facility. Inspect extension cords periodically and replace if damaged. Keep handles dry, clean, and free from oil and grease.
- 13. DISCONNECT TOOLS.** When not in use, before servicing, and when changing accessories, such as blades, bits, cutters.

14. **REMOVE ADJUSTING KEYS AND WRENCHES.** Form habit of checking to see that keys and adjusting wrenches are removed from tool before turning it on.
15. **AVOID UNINTENTIONAL STARTING.** Don't carry tool with finger on switch. Be sure switch is OFF when plugging in.
16. **EXTENSION CORDS.** Make sure your extension cord is in good condition. When using an extension cord, be sure to use one heavy enough to carry the current your product will draw. An undersized cord will cause a drop in line voltage resulting in loss of power and overheating. Table 1 shows the correct size to use depending on cord length and nameplate ampere rating. If in doubt, use the next heavier gage. The smaller the gage number, the heavier the cord.

TABLE 1 MINIMUM GAGE FOR CORD SETS

		Total Length of Cord in Feet			
		0 – 25	26 – 50	51 – 100	101 – 150
Ampere Rating More Than	Not More Than	A W G			
		0	– 6	18	16
6	– 10	18	16	14	12
10	– 12	16	16	14	12
12	– 16	14	12	Not Recommended	

17. **OUTDOOR USE EXTENSION CORDS.** When tool is used outdoors, use only extension cords intended for use outdoors and so marked.
18. **STAY ALERT.** Watch what you are doing, use common sense. Don't operate tool when you are tired.
19. **CHECK DAMAGED PARTS.** Before further use of the tool, a guard or other part that is damaged should be carefully checked to determine that it will operate properly and perform its intended function. Check for alignment of moving parts, binding of moving parts, breakage of parts, mounting, and any other conditions that may affect its operation. A guard or other part that is damaged should be properly repaired or replaced by an authorized service center unless otherwise indicated elsewhere in this instruction manual. Have defective switches replaced by authorized service center. Don't use tool if switch does not turn it on and off.
20. **GUARD AGAINST ELECTRIC SHOCK.** Prevent body contact with grounded surfaces. For example; pipes, radiators, ranges, refrigerator enclosures.
21. **REPLACEMENT PARTS.** When servicing, use only identical replacement parts.
22. **POLARIZED PLUGS.** To reduce the risk of electric shock, this equipment has a polarized plug (one blade is wider than the other). This plug will fit in a polarized outlet only one way. If the plug does not fit fully in the outlet, reverse the plug. If it still does not fit, contact a qualified electrician to install the proper outlet. Do not change the plug in any way.

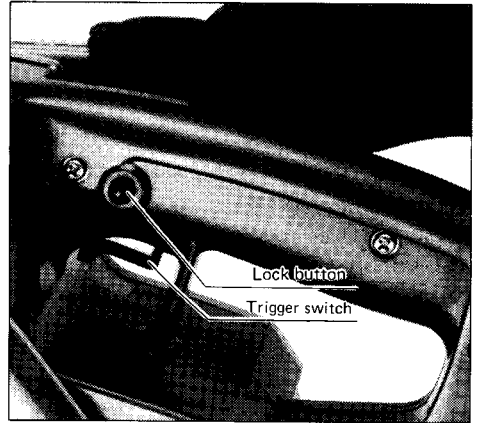
**VOLTAGE WARNING:** Before connecting the tool to a power source (receptacle, outlet, etc.) be sure the voltage supplied is the same as that specified on the nameplate of the tool. A power source with voltage greater than that specified for the tool can result in **SERIOUS INJURY** to the user — as well as damage to the tool. If in doubt, **DO NOT PLUG IN THE TOOL**. Using a power source with voltage less than the nameplate rating is harmful to the motor.

**SAVE THESE INSTRUCTIONS.**

## How to use

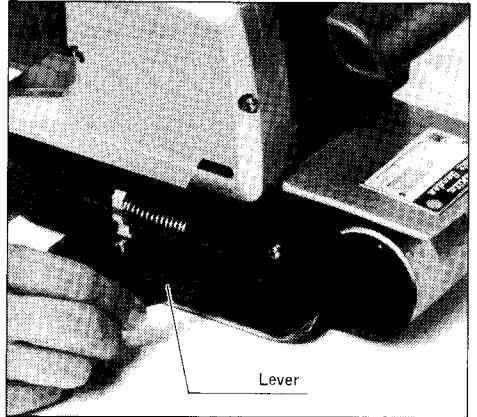
### Switch action

To start the tool, simply pull the trigger. Release the trigger to stop. For continuous operation without having to keep your finger on the trigger, just pull the trigger and then push in the lock button with your thumb. To stop the tool from lock position, just pull the trigger again and release it.



### Mounting belt

With the tool unplugged and the lever pulled out all the way, slip the belt over the rollers with the arrow direction on the belt the same as that of tool revolution (or belt life is shortened).

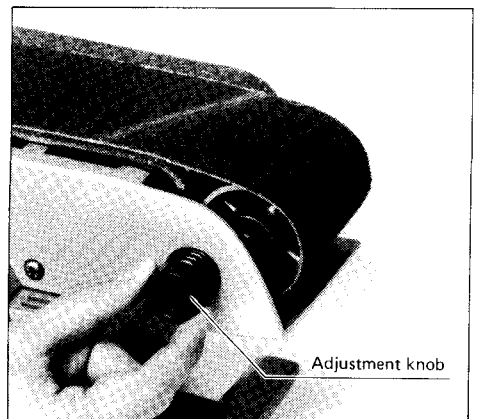


### Belt adjustment

Flip sander over on its back and use the adjustment knob to obtain equal tension of belt over the front and back rollers.

Then plug in sander and switch it on, using the adjustment knob to center the belt as it runs over the rollers.

Failure to adjust belt properly over rollers can result in frayed belt edges.



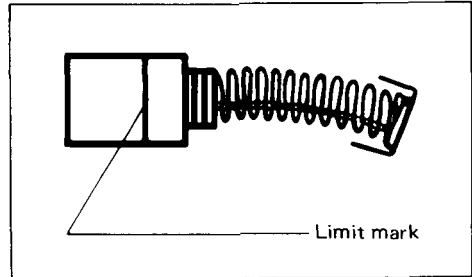
## MAINTENANCE

### CAUTION:

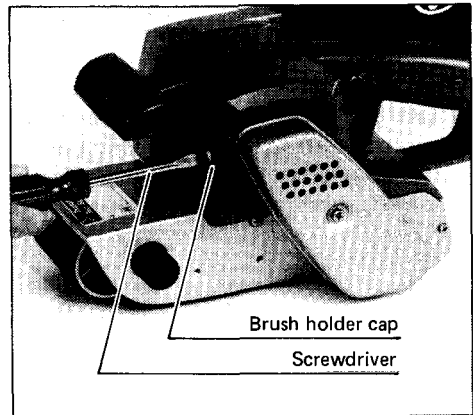
Always be sure that the tool is switched off and unplugged before attempting to perform inspection or maintenance.

### Replacing carbon brushes

Remove and check the carbon brushes regularly. Replace when they wear down to the limit mark. Keep the carbon brushes clean and free to slip in the holders. Both carbon brushes should be replaced at the same time. Use only identical carbon brushes.



Use a screwdriver to remove the brush holder caps. Take out the worn carbon brushes, insert the new ones and secure the brush holder caps.



To maintain product SAFETY and RELIABILITY, repairs, any other maintenance or adjustment should be performed by Makita Authorized or Factory Service Centers, always using Makita replacement parts.

# ACCESSORIES

**CAUTION:**

These accessories or attachments are recommended for use with your Makita tool specified in this manual. The use of any other accessories or attachments might present a risk of injury to persons. The accessories or attachments should be used only in the proper and intended manner.

**Abrasive belts**

● **Belt type and use**

- AA – For wood, iron and steel.
- CC – For stone and plastics.

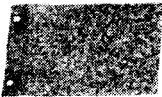


Grit	Part No.	Use	Sheets per pack
AA40	742306-7	Coarse	10
AA60	742307-5		
AA80	742308-3	Medium	
AA100	742309-1		
AA120	742310-6		
AA150	742311-4		
AA180	742350-4	Fine	
AA240	742312-2		

Grit	Part No.	Use	Sheets per pack
CC40	742313-0	Coarse	10
CC60	742314-8		
CC80	742315-6		
CC100	742316-4	Medium	
CC120	742317-2		
CC150	742318-0	Fine	
CC180	742351-2		
CC240	742319-8		

**Carbon plate**

Part No. 423027-7



**Steel plate**

Part No. 342466-1



**CAUTION:**

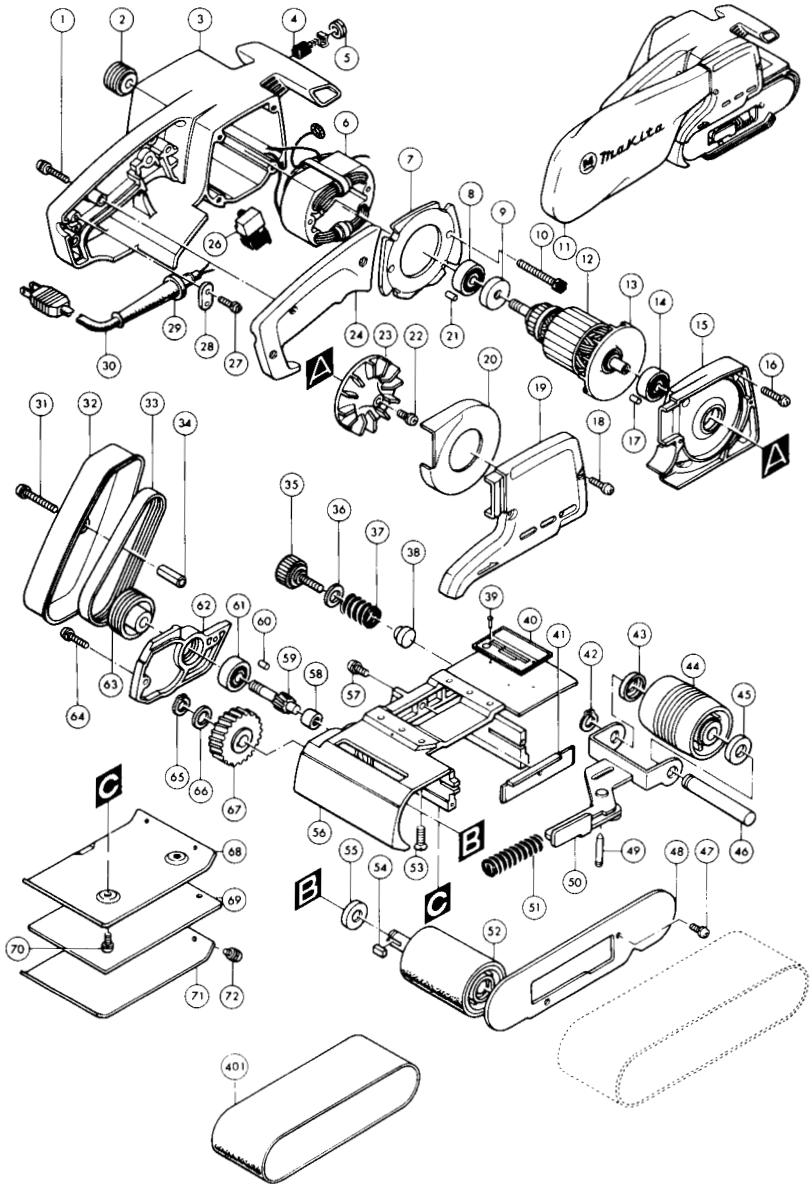
Install the steel plate so that THE EDGE OF THE STEEL PLATE WILL NOT PROTRUDE FROM THE EDGE OF THE BASE PLATE ON THE SIDE WITH THE BELT INSTALLING LEVER. IF THE PLATE IS ALLOWED TO PROTRUDE, IT MAY CAUSE INJURY.

**Dust bag**

Part No. 122296-4



# 76 mm (3") BELT SANDER Model 9900B





ITEM NO.	NO. USED	DESCRIPTION	ITEM NO.	NO. USED	DESCRIPTION
<b>MACHINE</b>			<b>MACHINE</b>		
1	3	P. H. Screw M4x30 (With Washer)	38	1	Shoe
2	1	V-Pulley 5-25L	39	2	Rivet 0-5
3	1	Motor Housing (With Brush Holder x 2 & S. Screw M5x8 x 2)	40	1	Name Plate
4	2	Carbon Brush	41	1	Edge Slider
5	2	Brush Holder Cap	42	1	Retaining Ring S-12
6	1	FIELD ASSEMBLY (With Garter Spring x 2)	43	1	Cup Washer 12
7	1	Baffle Plate	44	1	Tension Roller
8	1	Ball Bearing 6200LLB	45	1	Cup Washer 12
9	1	Insulation Washer	46	1	Tension Roller Shaft
10	2	H. Bolt M5x45 (With Washer)	47	2	P. H. Screw M4x10 (With Washer)
11	1	Dust Bag	48	1	Safety Cover
12	1	ARMATURE ASSEMBLY (Assembled Items 8, 9, 12, 13 & 14)	49	1	Support Pin
13	1	Fan 75	50	1	Tension Roller Arm
14	1	Ball Bearing 6200LLB	51	1	Compression Spring 11
15	1	Dust Collector Bracket	52	1	Driving Roller
16	4	P. H. Screw M5x25 (With Washer)	53	6	C. H. Screw M5x18
17	1	Rubber Pin 4	54	1	Key 4
18	2	P. H. Screw M4x18 (With Washer)	55	1	Cup Washer 12
19	1	Dust Collector Cover	56	1	Frame (With Rivet x 2, Dust Guide, Plane Bearing 12 x 2 & Sponge Sheet)
20	1	Separator	57	1	P. H. Screw M5x12 (With Washer)
21	1	Rubber Pin 4	58	1	Needle Bearing 810
22	1	P. H. Screw M5x12 (With Washer)	59	1	Helical Gear 10
23	1	Fan 74	60	1	Rubber Pin 4
24	1	Handle Cover	61	1	Ball Bearing 6200LLB
26	1	Switch	62	1	Gear Cover
27	2	P. H. Screw M4x18 (With Washer)	63	1	V-Pulley 5-45
28	1	Strain Relief	64	2	P. H. Screw M4x18 (With Washer)
29	1	Cord Guard	65	1	Retaining Ring S-12
30	1	CORD ASSEMBLY (Assembled Cord, Plug & Cord Guard)	66	A.R.	T. Washer 12
31	1	P. H. Screw M5x40 (With Washer)	67	1	Helical Gear 48
32	1	Belt Cover	68	1	Base Plate
33	1	Poly V-Belt 5-304	69	1	Cork Rubber Plate
34	1	Sleeve 6	70	2	P. H. Screw M4x10 (With Washer)
35	1	Screw M6x25	71	1	Steel Plate
36	1	F. Washer 16	72	2	P. H. Screw M4x10 (With Washer)
37	1	Compression Spring 16	<b>ACCESSORY</b>		
			401	1	Abrasive Belt 533-100

# MAKITA LIMITED ONE YEAR WARRANTY

## Warranty Policy

Every Makita tool is thoroughly inspected and tested before leaving the factory. It is warranted to be free of defects from workmanship and materials for the period of ONE YEAR from the date of original purchase. Should any trouble develop during this one-year period, return the COMPLETE tool, freight prepaid, to one of Makita's Factory or Authorized Service Centers. If inspection shows the trouble is caused by defective workmanship or material, Makita will repair (or at our option, replace) without charge.

This Warranty does not apply where:

- repairs have been made or attempted by others;
- repairs are required because of normal wear and tear;
- The tool has been abused, misused or improperly maintained;
- alterations have been made to the tool.

IN NO EVENT SHALL MAKITA BE LIABLE FOR ANY INDIRECT, INCIDENTAL OR CONSEQUENTIAL DAMAGES FROM THE SALE OR USE OF THE PRODUCT. THIS DISCLAIMER APPLIES BOTH DURING AND AFTER THE TERM OF THIS WARRANTY.

MAKITA DISCLAIMS LIABILITY FOR ANY IMPLIED WARRANTIES, INCLUDING IMPLIED WARRANTIES OF "MERCHANTABILITY" AND "FITNESS FOR A SPECIFIC PURPOSE," AFTER THE ONE-YEAR TERM OF THIS WARRANTY.

This Warranty gives you specific legal rights, and you may also have other rights which vary from state to state. Some states do not allow the exclusion or limitation of incidental or consequential damages, so the above limitation or exclusion may not apply to you. Some states do not allow limitation on how long an implied warranty lasts, so the above limitation may not apply to you.

## Makita Corporation

3-11-8, Sumiyoshi-cho,  
Anjo, Aichi 446 Japan

883230C068

PRINTED IN JAPAN  
1995-3-N

## Free Manuals Download Website

<http://myh66.com>

<http://usermanuals.us>

<http://www.somanuals.com>

<http://www.4manuals.cc>

<http://www.manual-lib.com>

<http://www.404manual.com>

<http://www.luxmanual.com>

<http://aubethermostatmanual.com>

Golf course search by state

<http://golfingnear.com>

Email search by domain

<http://emailbydomain.com>

Auto manuals search

<http://auto.somanuals.com>

TV manuals search

<http://tv.somanuals.com>