



Makita

Hedge Trimmer

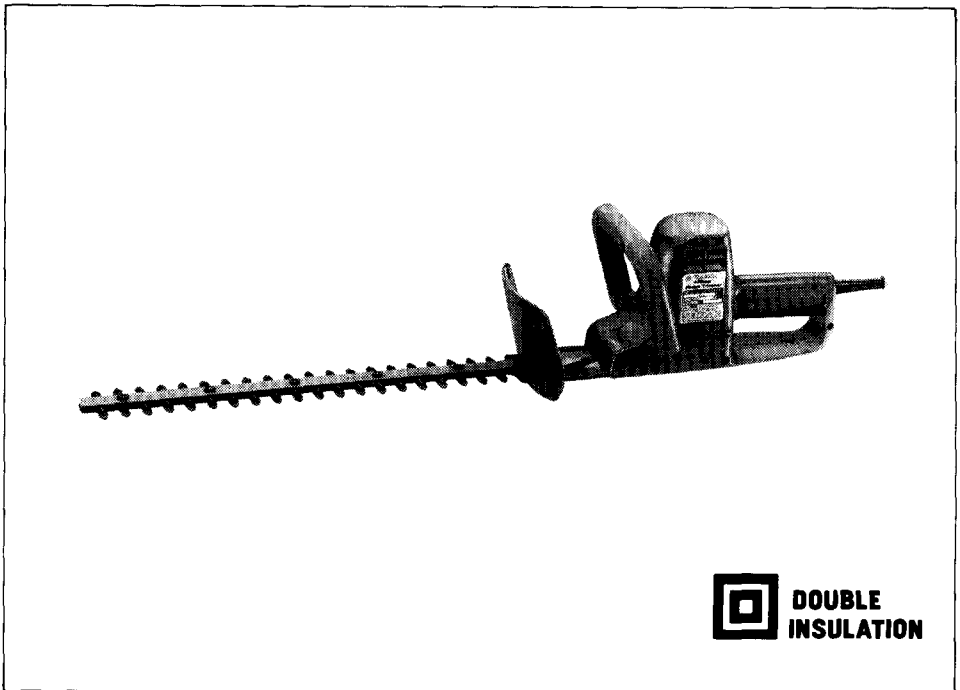
450 mm (17-3/4'') MODEL UH4510A

630 mm (24-3/4'') MODEL UH6310A

Equipped with electric brake

アメリカ

INSTRUCTION MANUAL



 **DOUBLE INSULATION**

SPECIFICATIONS

MODEL	Effective cutting blade length	Strokes per minute	Dimensions (L x W x H)	Net weight
UH4510A	450 mm (17-3/4'')	1,800	825 mm x 180 mm x 170 mm (32-1/2'' x 7-1/8'' x 6-5/8'')	3.2 kg (7.0 lbs)
UH6310A	630 mm (24-3/4'')	1,800	1,000 mm x 180 mm x 170 mm (39-3/8'' x 7-1/8'' x 6-5/8'')	3.4 kg (7.5 lbs)

- * Manufacturer reserves the right to change specifications without notice.
- * Note: Specifications may differ from country to country.

IMPORTANT SAFETY INSTRUCTIONS

(For All Tools)

WARNING — TO REDUCE THE RISK OF INJURY, BASIC SAFETY PRECAUTIONS SHOULD BE OBSERVED. INCLUDING THE FOLLOWING:

READ AND FOLLOW ALL INSTRUCTIONS.

1. **DRESS PROPERLY** — Do not wear loose clothing or jewelry. They can be caught in moving parts. Use safety glasses and nonskid footwear. Use of sturdy gloves is recommended.
2. **STAY ALERT** — Watch what you are doing — use common sense. Do not operate trimmer when fatigued.
3. **DANGER — RISK OF CUT — KEEP HANDS AWAY FROM BLADES** — Keep both hands on handles when power is on. Do not attempt to remove cut material nor hold material to be cut when blades are moving. Make sure trimmer is switched off and unplugged when clearing jammed material from blades. Do not grasp the exposed cutting blades or cutting edges of trimmer.
CAUTION — Blades coast after turn off.
4. **WARNING — TO REDUCE THE RISK OF ELECTRIC SHOCK** — Don't use trimmer in rain, in wet locations, or on wet hedges of shrubbery. Use only extension cords marked "for use with outdoor appliances" having electrical rating not less than rating of trimmer. Do not use damaged extension cords. Inspect cords periodically and replace if damaged. Do not abuse cord. Never carry trimmer by cord. Do not yank cord to disconnect from receptacles. Keep cord away from heat, oil, and sharp edges.
5. **KEEP CHILDREN AWAY** — Do not permit children to contact trimmer or extension cord. Keep children a safe distance from work area.
6. **USE TRIMMER PROPERLY** — Use only for trimming the type of shrub, growth, and the like, described in the operating instructions. Do not abuse trimmer. Do not cut grass and weeds with this trimmer.
7. **DON'T OVERREACH OR STAND ON UNSTABLE SUPPORT** — Keep good footing and balance at all times.
8. **AVOID UNINTENTIONAL STARTING OF TRIMMER** — Before plugging in trimmer, be sure trimmer switch is off. Don't carry trimmer with finger on switch.
9. **AVOID LOCKING TRIMMER SWITCH ON** — Never attempt to tape, wire or fasten the switches so as to stay in the ON position.
10. **DISCONNECT (UNPLUG) TRIMMER FROM POWER SUPPLY** — When not in use. Before servicing, cleaning, and the like.

11. **MAINTAIN TRIMMER WITH CARE** — Follow maintenance instructions given in manual.
12. **STORE TRIMMER INDOORS** — When not in use store trimmer indoors in a dry place where not accessible to children.
13. **DO NOT ATTEMPT TO REPAIR TRIMMER** — Have repairs made by qualified dealer or repairman. See that only identical replacement parts are used.
14. **CORD SETS** --

The cord set you use with trimmer shall be marked with the suffix **W-A** following the cord type designation, for example **-SJTW-A**, to indicate it is acceptable for outdoor use.

Make sure your cord set is in good condition. When using a cord set, be sure to use one heavy enough to carry the current your product will draw. For lengths less than 25 feet, No. 18 AWG cord set should be used. An undersized cord will cause a drop in line voltage resulting in loss of power and overheating. (NOTE: Table 1 shows the correct size to use depending on cord length. If in doubt, use the next heavier gage. The smaller the gage number the heavier the cord.) To reduce the likelihood of disconnection of hedge trimmer cord from the cord set during operating, use the hook described in this manual.

Table 1
MINIMUM GAGE FOR CORDS SETS

Total Length of Cord in Feet	25	50	100	150
AWG Size of Cord	18	16	16	14

Contact Makita Authorized or Factory Service Center if a proper extension cord cannot be found.

15. Inspect blades periodically and replace before operation if damaged.
16. Hold the tool firmly with both hands.
17. Do not leave the tool running. Operate the tool only when hand-held.
18. **Attention!** Do not expose this tool to rain.
The tool must not be left outdoors and it must not be used when wet.
19. Be cautious not to cut through the supply cable while trimming. Pull plug immediately if the supply cable be damaged or cut.
20. When not in use, be sure to cover the blades with the blade guard.

VOLTAGE WARNING: Before connecting the tool to a power source (receptacle, outlet, etc.) be sure the voltage supplied is the same as that specified on the nameplate of the tool. A power source with voltage greater than that specified for the tool can result in **SERIOUS INJURY** to the user — as well as damage to the tool. If in doubt, **DO NOT PLUG IN THE TOOL**. Using a power source with voltage less than the nameplate rating is harmful to the motor.

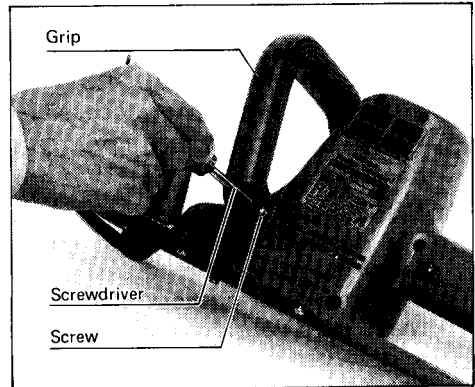
SAVE THESE INSTRUCTIONS.

Installing grip

Attach the grip onto the grooves in the tool side and secure with the two screws.

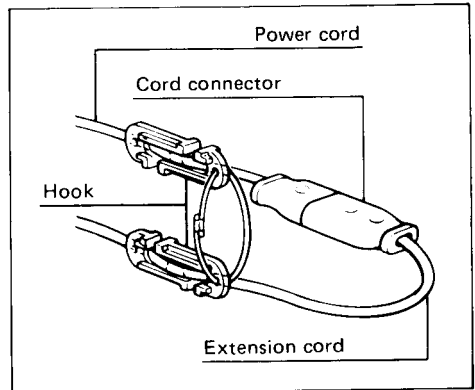
WARNING:

DO NOT USE WITHOUT GRIP.



Hook

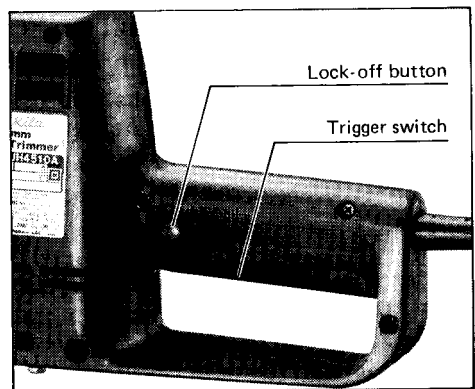
When using an extension cord, secure it to the tool's cord with the hook provided. Attach the hook about 100-200 mm (4" - 8") from the extension cord connector. This will help prevent unintentional disconnection.



Switch action

To prevent the trigger from being accidentally pulled, a lock-off button is provided as a safety feature.

To start the tool, press the lock-off button in and pull the trigger. Release the trigger to stop.



CAUTION:

Before plugging in the tool, always check to see that the trigger switch actuates properly and returns to the "OFF" position when released.

Operation

Refer to the Important Safety Instructions before operation.

Do not attempt to cut branches thicker than 12 mm (15/32") diameter with this trimmer. These should first be cut with shears down to the hedge trimming level.



Hold the trimmer with both hands and move it in front of your body.

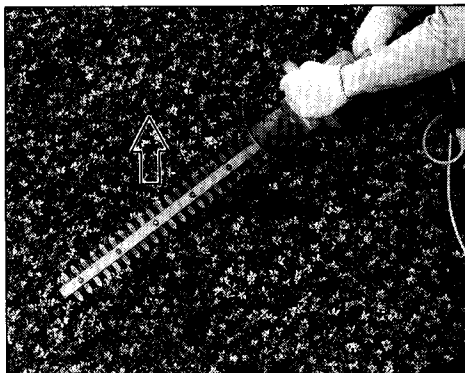
When operating the trimmer, keep extension cord behind trimmer. Never drape it over hedge being trimmed.



To cut a hedge top evenly, it helps to tie a string or cord at the desired hedge height and to trim along it, using it as a reference line.



To cut a hedge side evenly, it helps to cut from the bottom upwards.

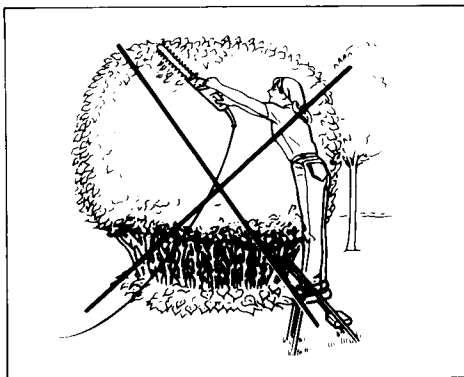


Trim boxwood or rhododendron from the base toward the top for a nice appearance and good job.



CAUTION:

- Be careful not to accidentally contact a metal fence or other hard objects while trimming. The blade will break and may cause serious injury.
- Do not attempt to trim too much at a time, or malfunction of the tool may result.
- Overreaching with a hedge trimmer, particularly from a ladder, is extremely dangerous. Don't work from anything wobbly or unfirm.



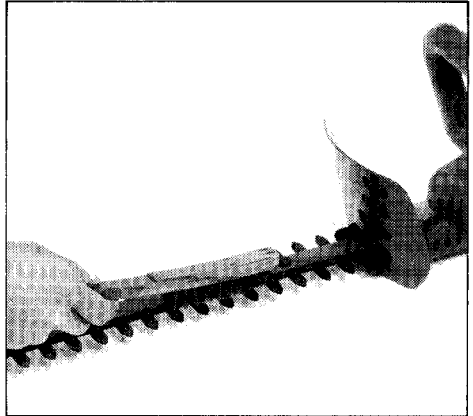
MAINTENANCE

CAUTION:

Always be sure that the tool is switched off and unplugged before attempting to perform inspection and maintenance.

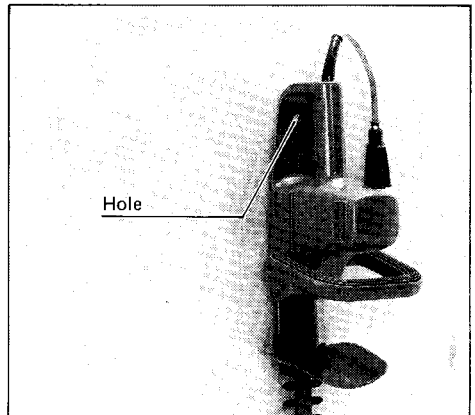
Blade maintenance

After operation, clean off the blades (both sides) with a stiff brush. Then wipe the blades with a cloth and coat them with light machine oil.



After use

When storing the tool, use the convenient hole in the bottom of the tool handle to hang the tool on a wall from a nail or hook.



The tool will stop when the carbon brushes wear to a certain length. When this occurs, both carbon brushes should be replaced.

To maintain product SAFETY and RELIABILITY, repairs, carbon brush inspection and replacement, any other maintenance or adjustment should be performed by Makita Authorized or Factory Service Centers, always using Makita replacement parts.

ACCESSORIES

CAUTION:

These accessories or attachments are recommended for use with your Makita tool specified in this manual. The use of any other accessories or attachments might present a risk of injury to persons. The accessories or attachments should be used only in the proper and intended manner.

● Blade cover

- Part No. 414247-4
(For model UH4510A)
- Part No. 414248-2
(For model UH6310A)

● Hook

- Part No. 158024-1



● Shear blade assembly

- Part No. 125008-4
(For model UH4510A)
- Part No. 125009-2
(For model UH6310A)

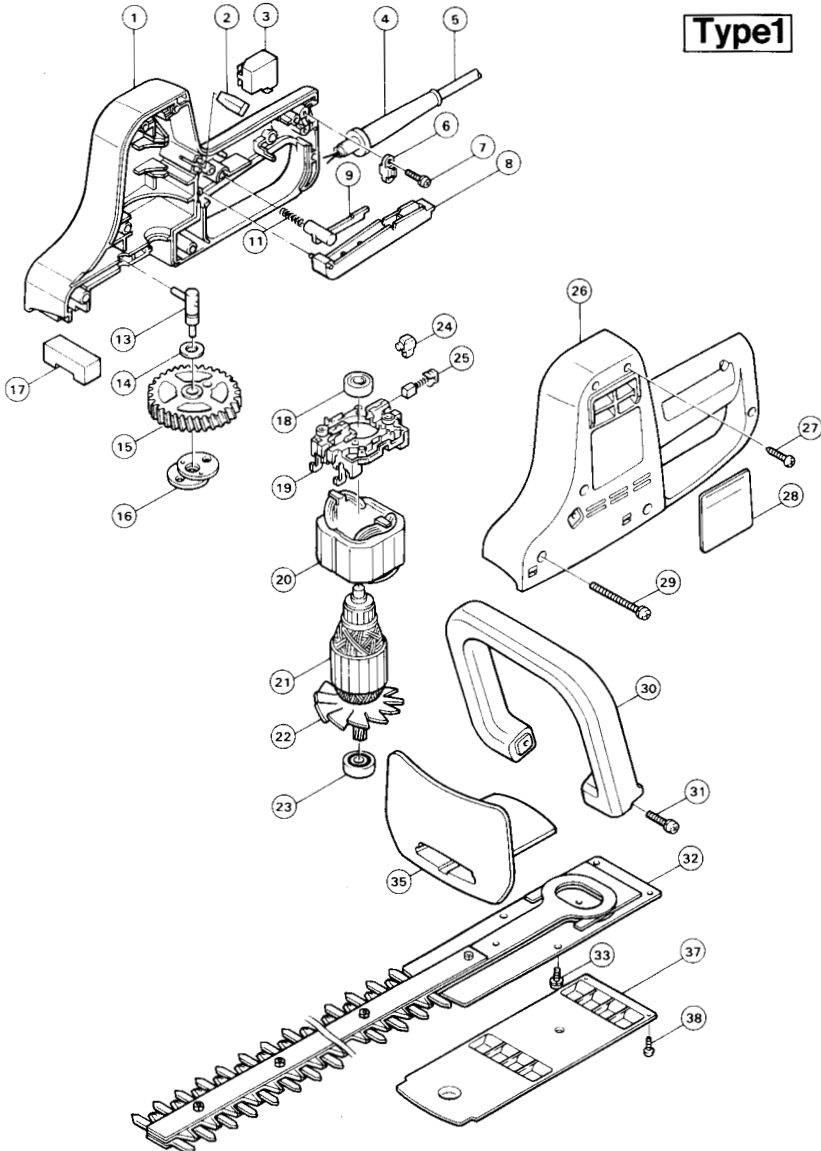




HEDGE TRIMMER

450 mm (17-3/4") Model UH4510A
630 mm (24-3/4") Model UH6310A

Type1



Note: The switch and other part configurations may differ from country to country.

ITEM NO.	NO. USED	DESCRIPTION	ITEM NO.	NO. USED	DESCRIPTION
<u>MACHINE</u>			<u>MACHINE</u>		
1	1	Housing Set (With Item 26)	22	1	Fan 70
2	1	Sponge Seal	23	1	Ball Bearing 609LB
3	1	Switch	24	2	Receptacle Sleeve
4	1	Cord Guard	25	2	Carbon Brush
5	1	Cord	26	1	Housing Set (With Item 1)
6	1	Strain Relief	27	5	Tapping Screw 4x20
7	2	Pan Head Screw M4x18 (With Washer)	28	1	Name Plate
8	1	Switch Lever	29	3	Pan Head Screw M5x55 (With Washer)
9	1	Lock-Off Button	30	1	Grip 27
11	1	Compression Spring 3	31	2	Pan Head Screw M5x20 (With Washer)
13	1	Pin 10	32	1	SHEAR BLADE ASSEMBLY
14	1	Flat Washer 10	33	4	Pan Head Screw M5x16 (With Washer)
15	1	Gear 68	34	1	Pan Head Screw M4x12
16	1	Crank	35	1	Guard
17	1	Sponge Seal	36	1	Hex. Nut M4-10
18	1	Ball Bearing 608LB	37	1	Bottom Cover
19	1	Terminal Base	38	2	Tapping Screw 4x14
20	1	Field			
21	1	ARMATURE ASSEMBLY (With Item 18 & 21 23)			

Note: The switch and other part specifications may differ from country to country.

MAKITA LIMITED ONE YEAR WARRANTY

Warranty Policy

Every Makita tool is thoroughly inspected and tested before leaving the factory. It is warranted to be free of defects from workmanship and materials for the period of ONE YEAR from the date of original purchase. Should any trouble develop during this one-year period, return the COMPLETE tool, freight prepaid, to one of Makita's Factory or Authorized Service Centers. If inspection shows the trouble is caused by defective workmanship or material, Makita will repair (or at our option, replace) without charge.

This Warranty does not apply where:

- repairs have been made or attempted by others;
- repairs are required because of normal wear and tear;
- The tool has been abused, misused or improperly maintained;
- alterations have been made to the tool.

IN NO EVENT SHALL MAKITA BE LIABLE FOR ANY INDIRECT, INCIDENTAL OR CONSEQUENTIAL DAMAGES FROM THE SALE OR USE OF THE PRODUCT. THIS DISCLAIMER APPLIES BOTH DURING AND AFTER THE TERM OF THIS WARRANTY.

MAKITA DISCLAIMS LIABILITY FOR ANY IMPLIED WARRANTIES, INCLUDING IMPLIED WARRANTIES OF "MERCHANTABILITY" AND "FITNESS FOR A SPECIFIC PURPOSE," AFTER THE ONE-YEAR TERM OF THIS WARRANTY.

This Warranty gives you specific legal rights, and you may also have other rights which vary from state to state. Some states do not allow the exclusion or limitation of incidental or consequential damages, so the above limitation or exclusion may not apply to you. Some states do not allow limitation on how long an implied warranty lasts, so the above limitation may not apply to you.



Makita Electric Works, Ltd.

11-8, 3-chome, Sumiyoshi-cho, Anjo, Aichi 446, Japan

883664-065

PRINTED IN JAPAN

1990 - 3 - N

Free Manuals Download Website

<http://myh66.com>

<http://usermanuals.us>

<http://www.somanuals.com>

<http://www.4manuals.cc>

<http://www.manual-lib.com>

<http://www.404manual.com>

<http://www.luxmanual.com>

<http://aubethermostatmanual.com>

Golf course search by state

<http://golfingnear.com>

Email search by domain

<http://emailbydomain.com>

Auto manuals search

<http://auto.somanuals.com>

TV manuals search

<http://tv.somanuals.com>