

**HI-SPEED
USB 2.0
SVGA
CONVERTER
USER
MANUAL**
MODEL 179119




MANHATTAN[™]

MAN-179119-UM-0608-01

Thank you for purchasing the MANHATTAN® Hi-Speed USB 2.0 SVGA Converter, Model 179119.

Designed to help increase productivity, improve desktop arrangements and extend the visual work area across dual monitors, this device makes word processing, editing and multi-tasking more effective with less-overlapped windows, fewer hidden palettes and better-organized views. Users can read e-mail on one monitor and open attachments on the other. Large, complicated spreadsheets can be expanded and viewed without scrolling.

Presentations are made more compelling with another monitor for more impact or viewing speaker notes on a separate display. The MANHATTAN Hi-Speed USB 2.0 SVGA Converter supports resolutions of up to 1280 x 1024 in 16-bit or 32-bit color, and its 16 MB SDRAM memory easily enhances the workspace without complicated installations or expensive equipment.

The easy-to-follow instructions in this user manual help make setup and operation relatively simple, so you'll soon be enjoying the benefits of these additional features:

- Primary, extended and mirror functions provide display continuity and dual views
- Portable and connects to any USB port without conflicts or external power supplies
- Plug and Play; Windows compatible
- Lifetime Warranty

System Requirements

- Compatible with Windows 2000/XP/Vista and Win CE (with host device support)
- Available Hi-Speed USB 2.0 port

Package Contents

- Hi-Speed USB 2.0 SVGA Adapter
- Quick install guide and driver CD with user manual

SAFETY & COMPLIANCE STATEMENTS

FCC

This equipment has been tested and found to comply with FCC Part 15 Subpart B § 15.109/15.107 Class B. Operation is subject to the following two conditions: 1) This device may not cause harmful interference; and 2) this device must accept any interference, including interference that may cause undesired operation of the device.

CE

This equipment is in compliance with the requirements of the following regulations: EN 55022 Class B (2006); EN 55024 (1998+A1:2001+A2:2003), (IEC/EN 61000-4-2 [1995+A1:1998+A2:2001]-3(2006)).

C-Tick

This equipment is in compliance with the requirements of the following regulations: EN 55022 (2006) Class B, AS/NZS CISPR22 © IEC: 2005.

VCCI

This equipment is in compliance with the requirements of the following regulations: CISPR22 © IEC: 2005.

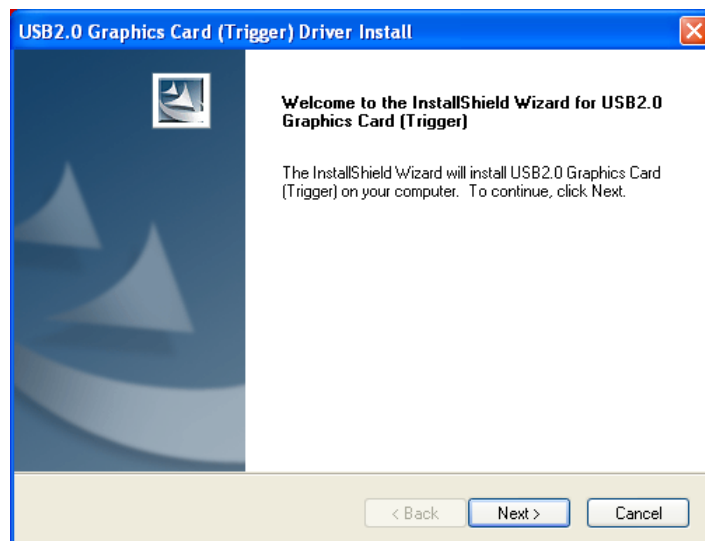
DRIVER INSTALLATION

Installing the device driver enables your computer's operating system to recognize the Hi-Speed USB 2.0 SVGA Converter once it's connected. Check your operating system and refer to the appropriate installation procedure below to begin installing the device driver. **IMPORTANT:**

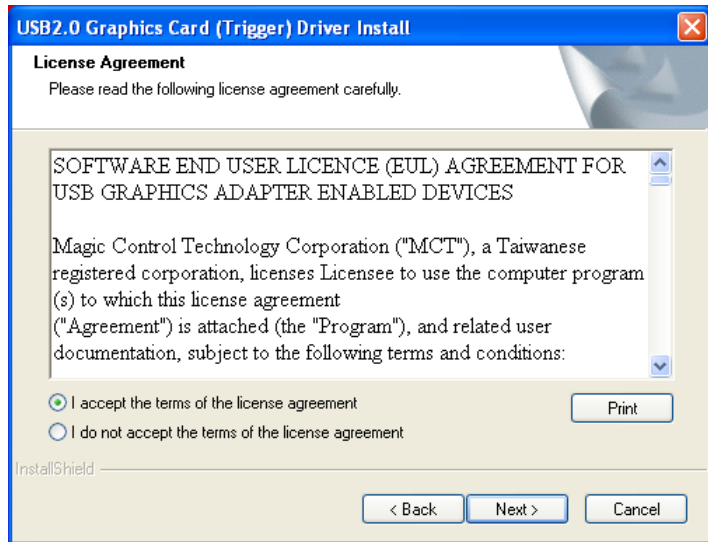
- Unplug the Hi-Speed USB 2.0 SVGA Converter from your PC or notebook before executing any setup or un-install program.
- Make sure you connect the display device to the VGA (DB15) connector of the Hi-Speed USB 2.0 SVGA Converter and switch it on before plugging the converter into an available USB 2.0 port on your PC or notebook.

WINDOWS 2000/XP

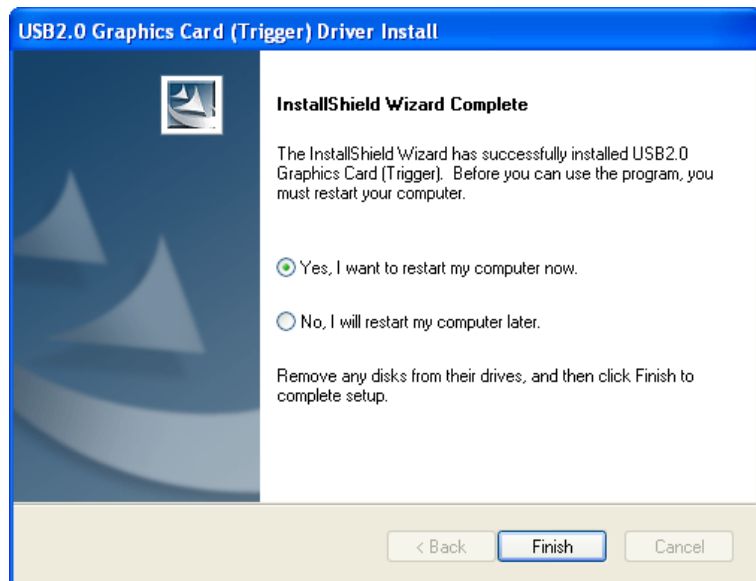
1. Insert the enclosed driver CD into the CD-ROM drive. The setup program should be launched automatically; if not, go to Start, then Run, and then double-click "D:\Setup.exe" (where D: is the path of your CD-ROM drive).
2. When the InstallShield Wizard welcome screen displays, click "Next" to continue.



3. When the License Agreement screen displays, read it and select “I accept the terms of the license agreement.” Click “Next” to continue.



4. When the InstallShield Wizard Complete screen displays, select “Yes, I want to restart my computer now.” Click “Finish” to complete the driver installation.



5. Connect the external display device (monitor/projector) to the VGA (DB15) connector of the Hi-Speed USB 2.0 SVGA Converter and switch it on.
6. After rebooting the computer, plug the converter into an available USB 2.0 port on your PC or notebook. The extended display will be shown on the second display device.

Verifying Driver Installation (2000/XP)

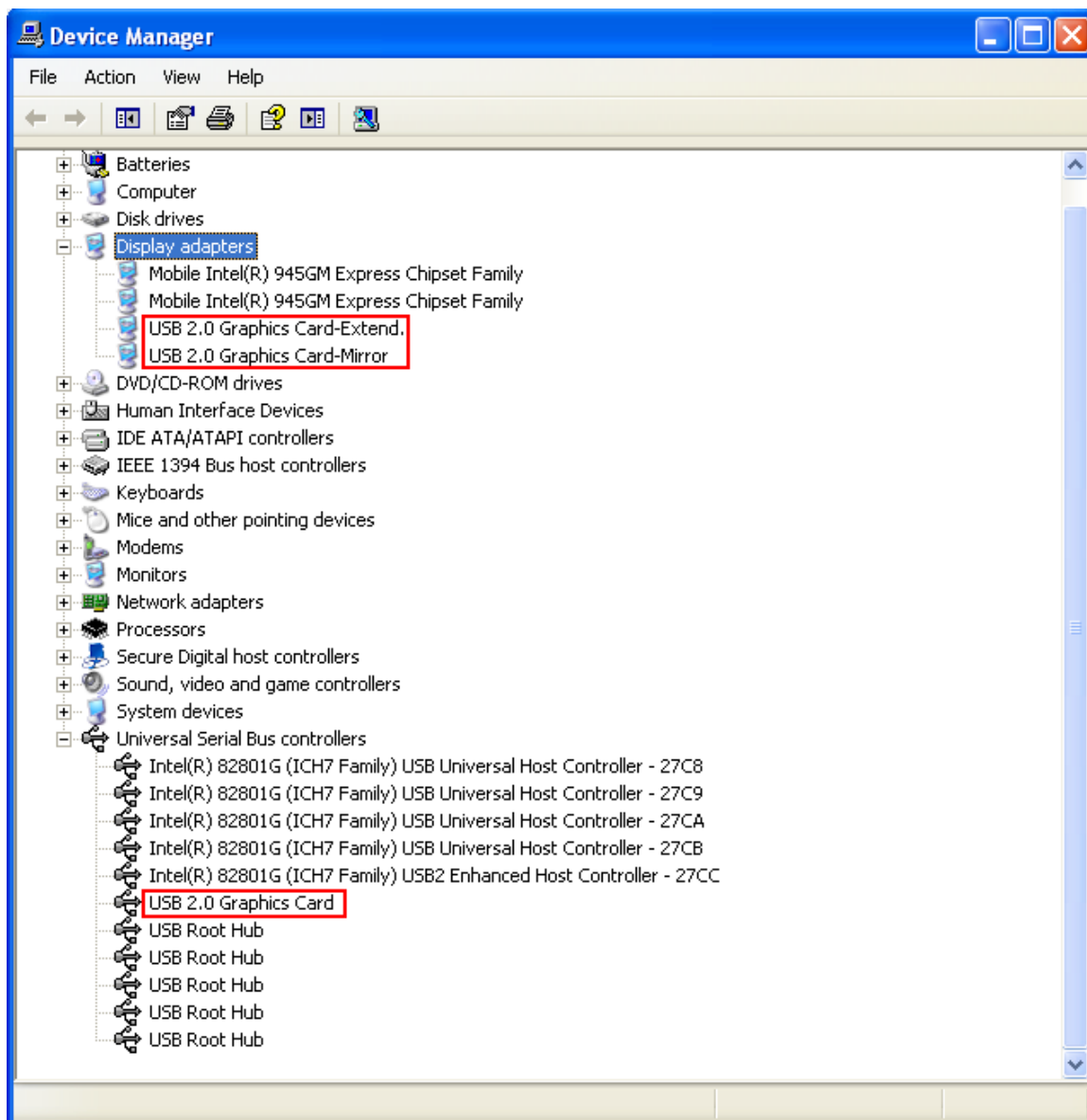
On the desktop, right-click My Computer → Properties → Hardware → Device Manager; then double-click “Display adapters” and “Universal Serial Bus controllers.”

“Universal Serial Bus controllers” should feature:

- “USB 2.0 Graphics Card”

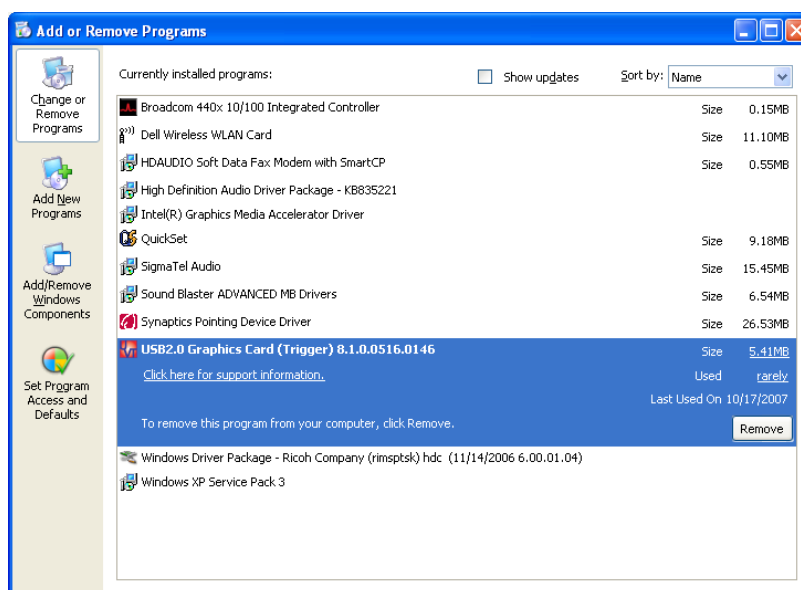
“Display adapters” should feature:

- “USB 2.0 Graphics Card-Extend”
- “USB2.0 Graphics Card-Mirror”

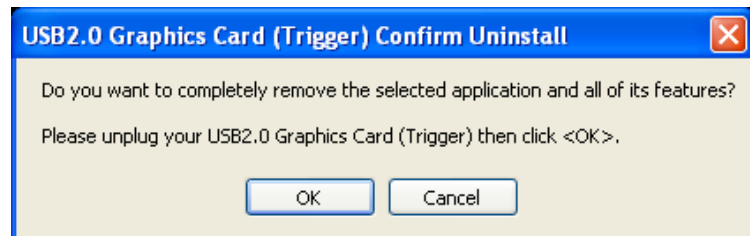


Driver Un-Install (2000/XP)

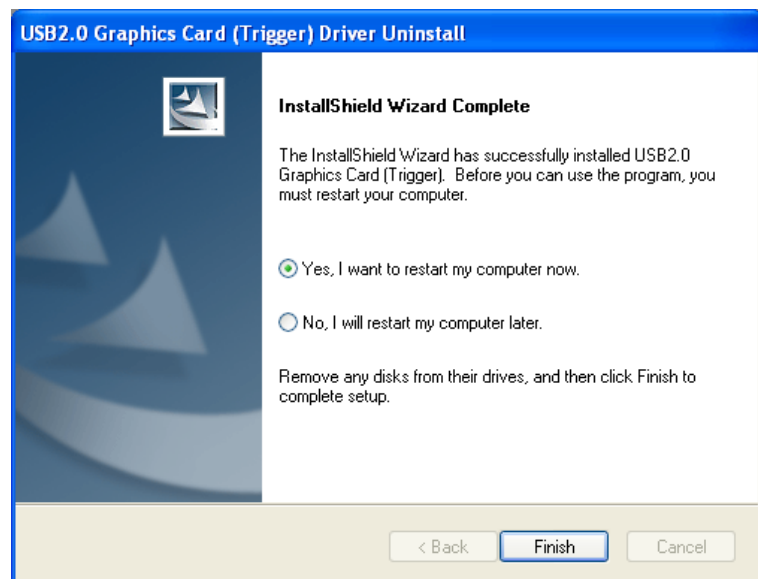
1. On the desktop, go to Start → Settings (Classic start menu) → Control Panel → Add or Remove Programs.
2. Select “USB 2.0 Graphics Card (Trigger) (driver version number)” and click “Remove.”



3. Disconnect the Hi-Speed USB 2.0 SVGA Converter and click "OK" to continue.

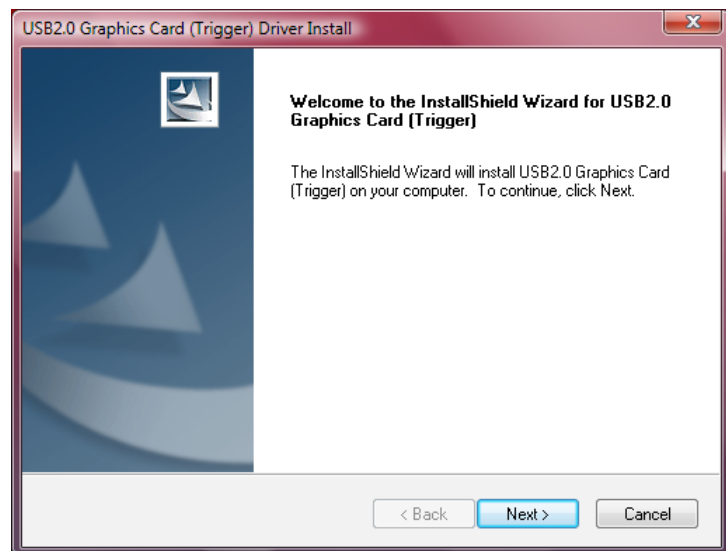


4. Select "Yes, I want to restart my computer now" and click "Finish" to reboot. After rebooting, the driver un-install procedure will be complete.

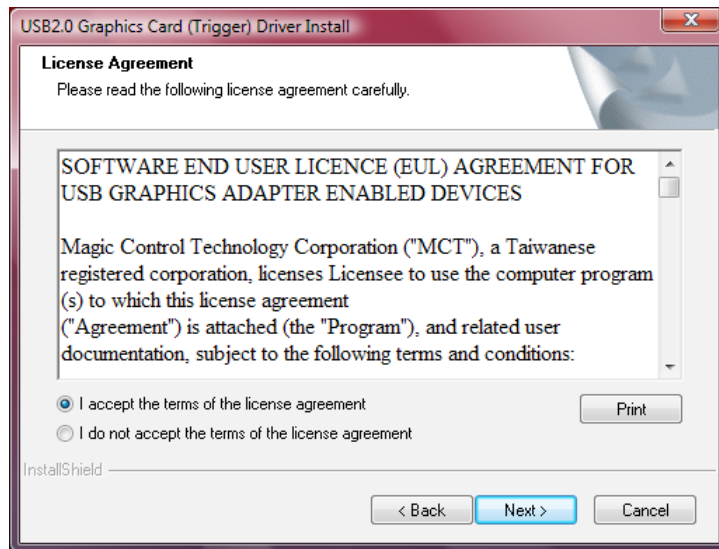


WINDOWS VISTA

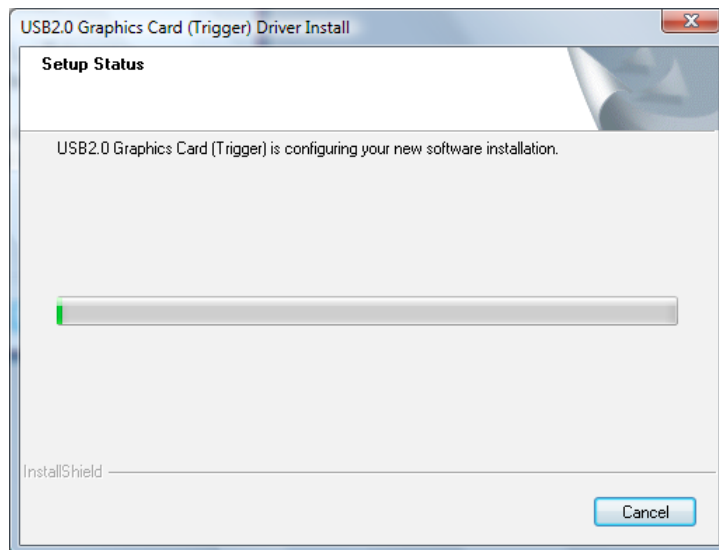
1. Insert the enclosed driver CD into the CD-ROM drive. The setup program should be launched automatically; if not, go to Start, then Run, and then double-click "D:\Setup.exe" (where D: is the path of your CD-ROM drive).
2. When the InstallShield Wizard welcome screen displays, click "Next" to continue.



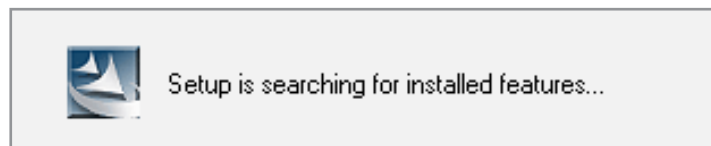
3. When the License Agreement screen displays, read it and select "I accept the terms of the license agreement." Click "Next" to continue.



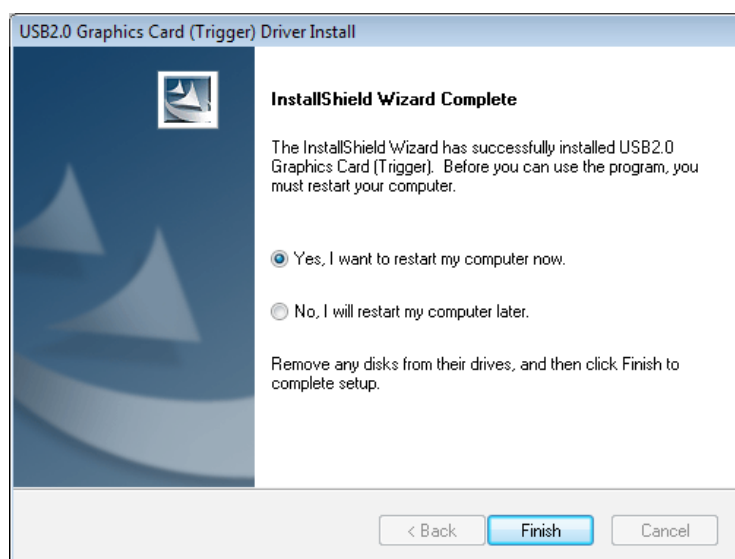
4. The Hi-Speed USB 2.0 SVGA Converter is configuring your new software installation...



... and is searching for installed features.



5. Select "Yes, I want to restart my computer now" and click "Finish" to complete the driver installation.



6. After rebooting the computer, plug the Hi-Speed USB 2.0 SVGA Converter into an available USB 2.0 port on your PC or notebook. The extended display will be shown on the second display device.

Verifying Driver Installation (Vista)

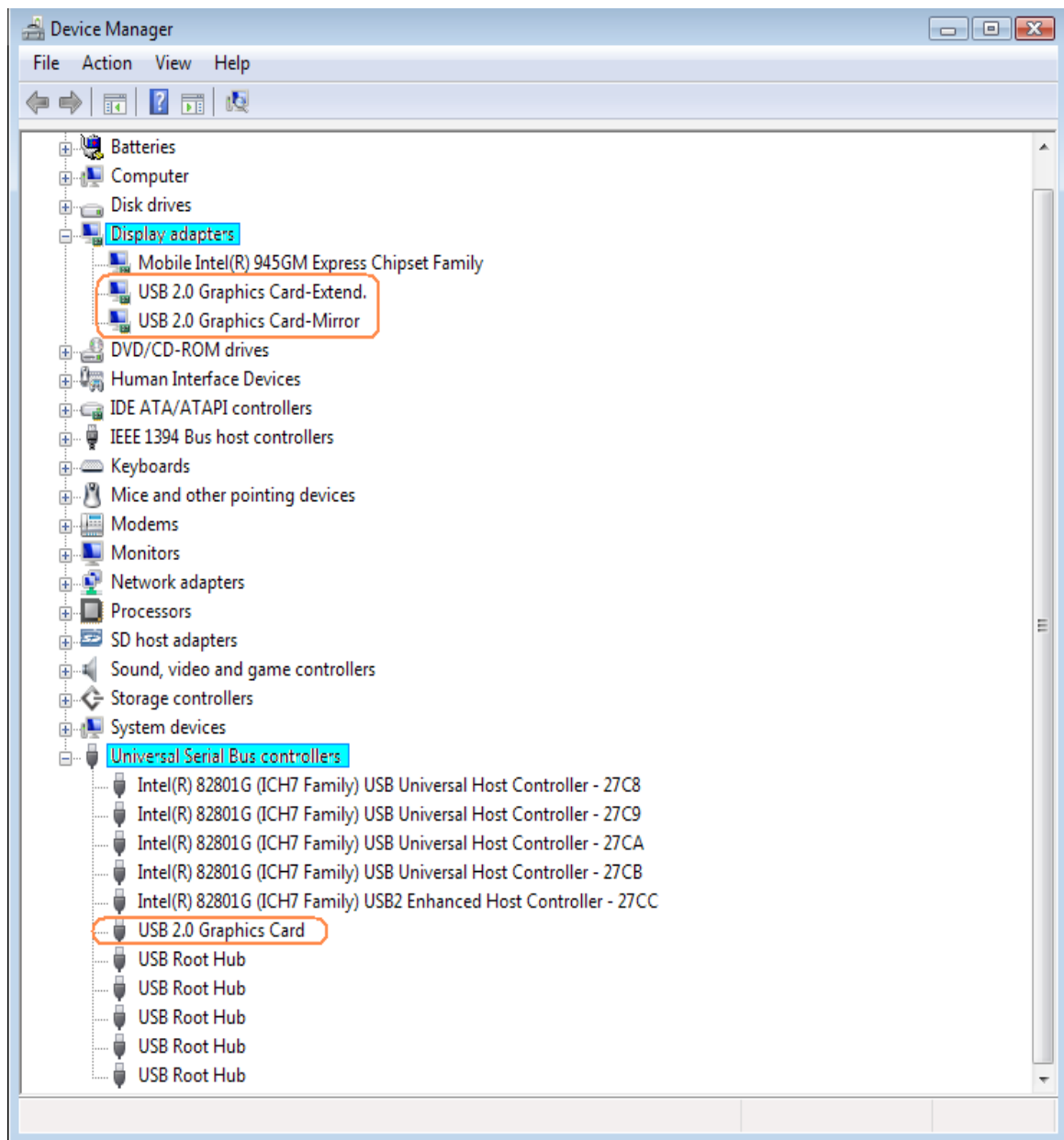
On the desktop, right-click My Computer → Properties → Device Manager; then double-click “Display adapters” and “Universal Serial Bus controllers.”

“Universal Serial Bus controllers” should feature:

- “USB 2.0 Graphics Card”

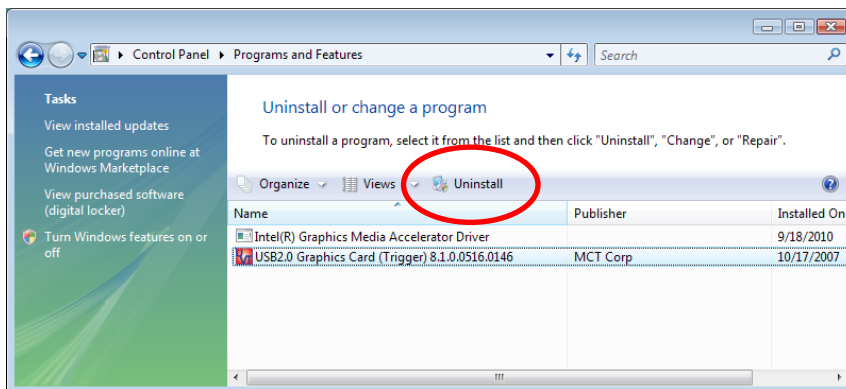
“Display adapters” should feature:

- “USB 2.0 Graphics Card-Extend”
- “USB2.0 Graphics Card-Mirror”



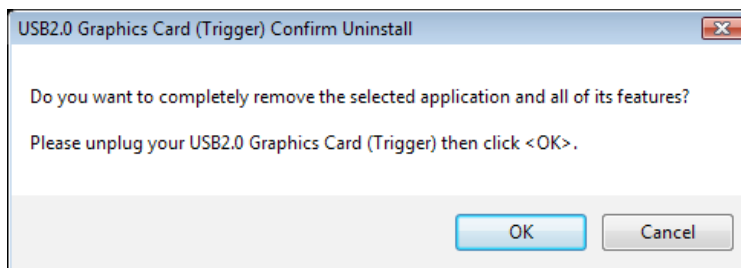
Driver Un-Install (Vista)

1. On the desktop, go to Start → Control Panel → Programs and Features.

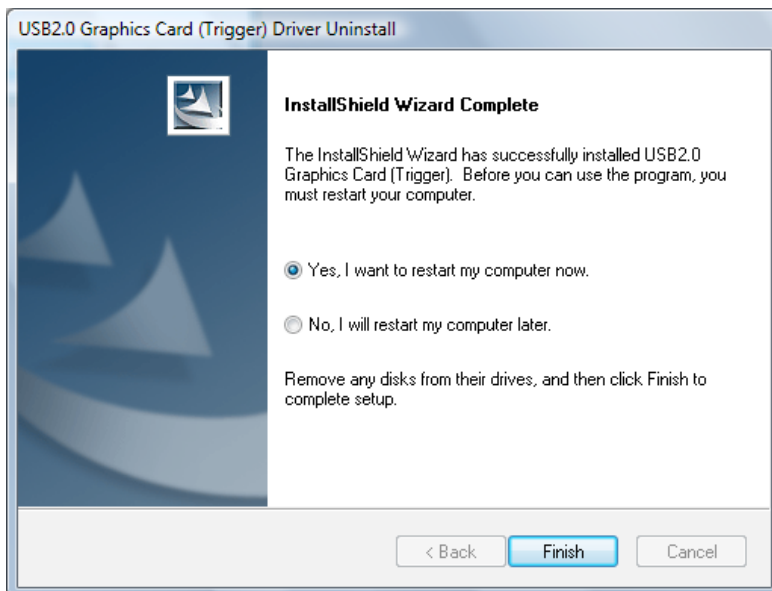


2. Select “USB 2.0 Graphics Card (Trigger) (driver version number)” and click “Uninstall.”

3. Disconnect the Hi-Speed USB 2.0 SVGA Converter and click “OK” to continue.



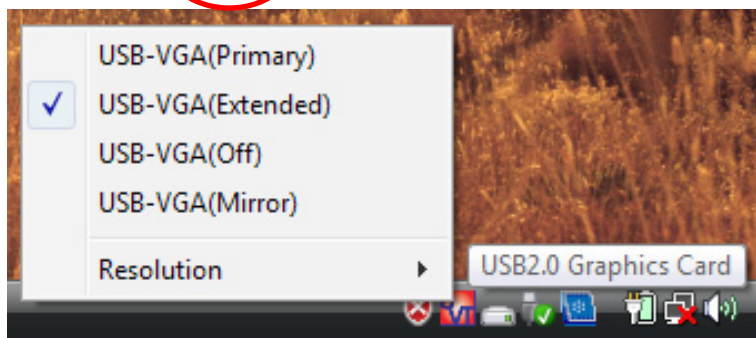
4. Select “Yes, I want to restart my computer now” and click “Finish” to reboot. After rebooting, the driver un-install procedure will be complete.



FUNCTIONS

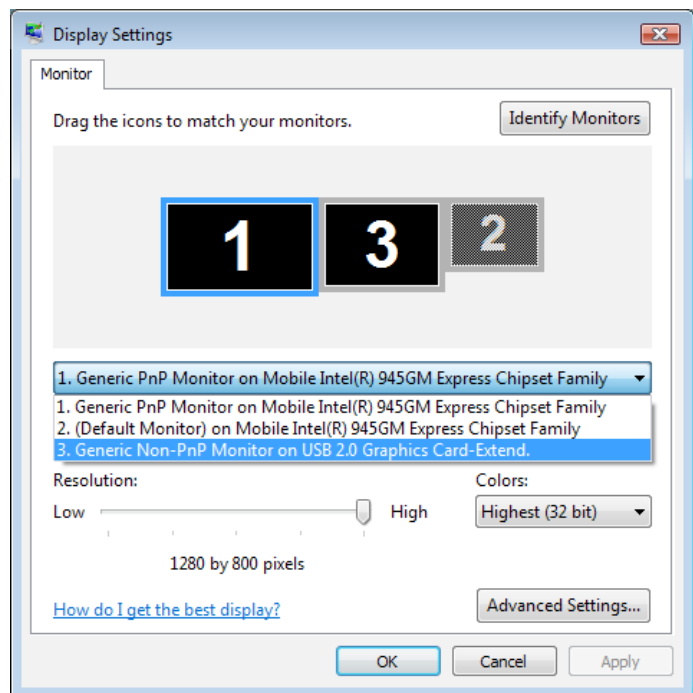
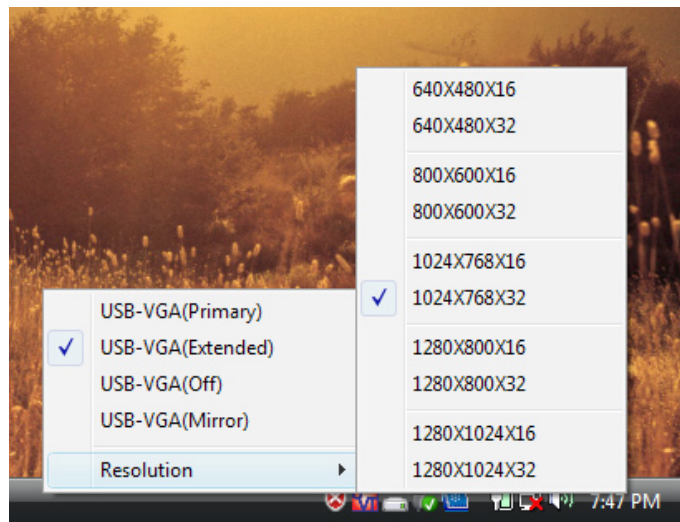


The Hi-Speed USB 2.0 SVGA Converter works with LCD or CRT monitors. Click the UVT icon to choose one of three modes: Primary, Extended and Mirror (plus an Off option).



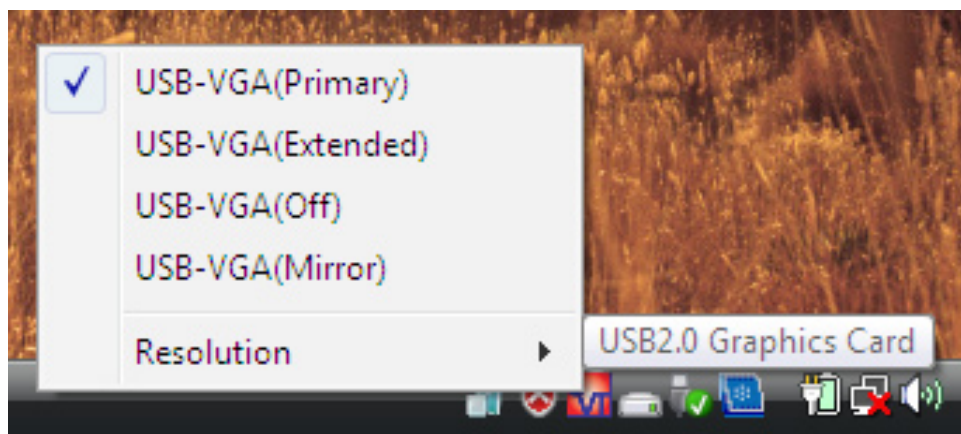
Clicking the UVT icon also provides access to the Resolution options, which can be changed here or by going to Display Properties/Settings.

NOTE: All Windows 2000/XP/Vista resolution settings are formatted with a 4:3 aspect ratio except for 1280 x 1024, which is 5:4. (1024 x 768 is the best choice for viewing DVDs.) Win CE settings are also 4:3 except for 800 x 480, which is 15:9.



PRIMARY MODE

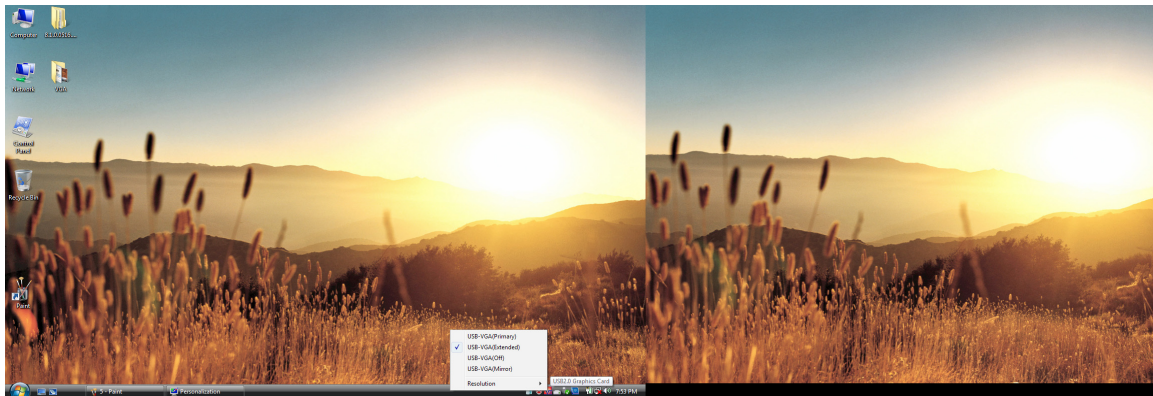
The system's main graphics adapter will automatically switch to act as the secondary graphics adapter, and the main screen will now work as the extended desktop. The monitor that's connected to the



Hi-Speed USB 2.0 SVGA Converter will now act as the primary Windows desktop. **NOTE:** Some display utilities and drivers found with certain AGP and built-in display adapters may prevent this option from working on some systems. You can disable the other utility program (usually in the same toolbar located on the bottom-right corner of the desktop) to make this function work properly.

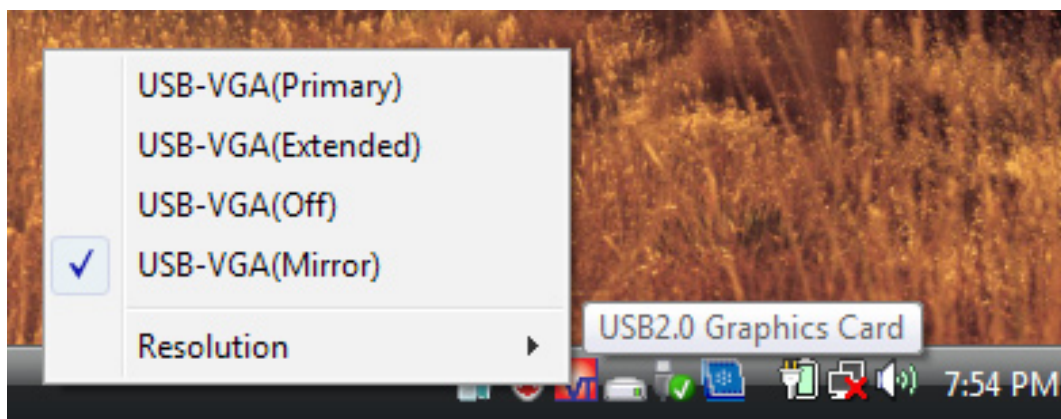
EXTENDED MODE

By default, the monitor connected to the Hi-Speed USB 2.0 SVGA Converter will work as the “extended” desktop, which expands the primary Windows desktop of your system. You can change the relative position of this extended desktop in Display Properties/Settings.



MIRROR MODE

In this mode, the Windows desktop will be replicated, or “mirrored,” to the secondary CRT/LCD monitor. The screen resolution setting on the secondary monitor will follow the primary screen’s resolution. If the selected resolution setting is not supported by the primary screen, however, a warning dialog box will be displayed and the suggested screen resolution will be shown.



OFF

This option simply disables the Hi-Speed USB 2.0 SVGA Converter.

FAQ

Following are some frequently asked questions — and answers — regarding the installation or operation of the Hi-Speed USB 2.0 SVGA Converter.

Q: *Why can't I make the Hi-Speed USB 2.0 SVGA Converter the primary display?*

A: Some video card manufacturers include a utility that prevents other video cards from being set as the primary card. Check the bottom-right corner taskbar for the utility, and disable the utility before designating the Hi-Speed USB 2.0 SVGA Converter as the primary display.

Q: *Why won't my DVD player work when I move it over to the extended display?*

A: Some DVD playback software packages don't support playing on a second display adapter of any kind. You can try opening the program in the secondary display first before playing the DVD.

Q: *How come my video won't play on Media Player if I move it over to the extended desktop?*

A: Check that you've moved the Media Player window completely over to the second screen.

Q: *Why doesn't my mouse move past the right side of the screen as it should on an extended desktop?*

A: Check the display settings and make sure that your display No. 2 is on the right side of display No. 1. You can rearrange how Windows treats displays in relation to each other in Display Properties/Settings.

Q: *Why are there are lines running horizontally up and down my screen?*

A: This is due to a low refresh rate setting. You can change this by going to Display Properties/Settings → Advanced Settings. **NOTE:** Make sure you select the USB 2.0 VGA device first and not set the refresh rate higher than what your monitor can support, as this can damage your monitor. You can also try to reset/refresh/resynchronize your monitor.

Q: *Why doesn't Direct3D work?*

A: This is a current limitation of the Hi-Speed USB 2.0 SVGA Converter. Check for driver updates in the future to add support for this. If your application requires this, use the main display adapter.

OPERATION TIPS

Following are some tips that may help if you are experiencing any difficulties using the Hi-Speed USB 2.0 SVGA Converter. Contact your dealer for additional assistance, if needed.

- Check to make sure that all connectors are plugged in correctly.
- Make sure that the USB port that you are using is USB 2.0.
- Try a different USB 2.0 port and/or computer.
- Check to see that the monitor is connected correctly and the power is on.
- Try connecting the adapter directly to the computer instead of through a hub.
- Unplug all other USB devices from the system.
- Make sure to restart your computer after the driver installation.
- Unplug the adapter and re-insert it.
- Check the Web site to make sure you have the latest drivers.
- Reset/refresh/resynchronize your monitor.
- Selecting Primary mode may disable the main system display on certain Intel graphics solution-based computer systems.
- If you have problems during the boot-up process, start your computer in Safe mode and un-install the driver. Hold the CTRL key until the Windows startup menu appears and select "Safe Mode."
- To verify the driver version that you installed, go to Control Panel → Add or Remove Programs to check the program: USB 2.0 Graphics Card (Trigger) 8.1.0.0516.0146 (the number is the driver version).

SPECIFICATIONS

Standards and Certifications

- Hi-Speed USB 2.0
- EHCI
- CE
- FCC

General

- Chipset: MCT Trigger
- Display memory: 16 MB SDRAM
- Bus-powered
- Connections: USB type A male; HD 15 female
- Supports Suspend and Wake modes

Supported resolutions

- For Windows:
 - 5:4; 1280 x 1024; 16/32 bits
 - 4:3; 1024 x 768; 16/32 bits
 - 4:3; 800 x 600; 16/32 bits
 - 4:3; 640 x 480; 16/32 bits
- For Win CE:
 - 4:3; 800 x 600; 16/32 bits
 - 15:9; 800 x 480; 16/32 bits
 - 4:3; 640 x 480; 16/32 bits

Physical

- Case material: ABS plastic
- Dimensions: 3.25 x 1.5 x 0.75 in. (8 x 4 x 2 cm.)
- Cable: (50 cm) (19 in.)
- Weight: 2.8 oz. (79 g)

System Requirements

- Windows 2000/XP/Vista and Win CE (with host device support)
- Available Hi-Speed USB 2.0 port

Package Contents

- Hi-Speed USB 2.0 SVGA Adapter
- Quick install guide and driver CD with user manual



MANHATTANTM

BRINGING COMPUTERS TO LIFE

MANHATTAN[®] offers a complete line of PC Components, Peripherals, Cables and Accessories. Ask your local computer dealer for more information or visit us online at

www.manhattan-products.com

Copyright © MANHATTAN

All products mentioned are trademarks or registered trademarks of their respective owners.

Free Manuals Download Website

<http://myh66.com>

<http://usermanuals.us>

<http://www.somanuals.com>

<http://www.4manuals.cc>

<http://www.manual-lib.com>

<http://www.404manual.com>

<http://www.luxmanual.com>

<http://aubethermostatmanual.com>

Golf course search by state

<http://golfingnear.com>

Email search by domain

<http://emailbydomain.com>

Auto manuals search

<http://auto.somanuals.com>

TV manuals search

<http://tv.somanuals.com>