

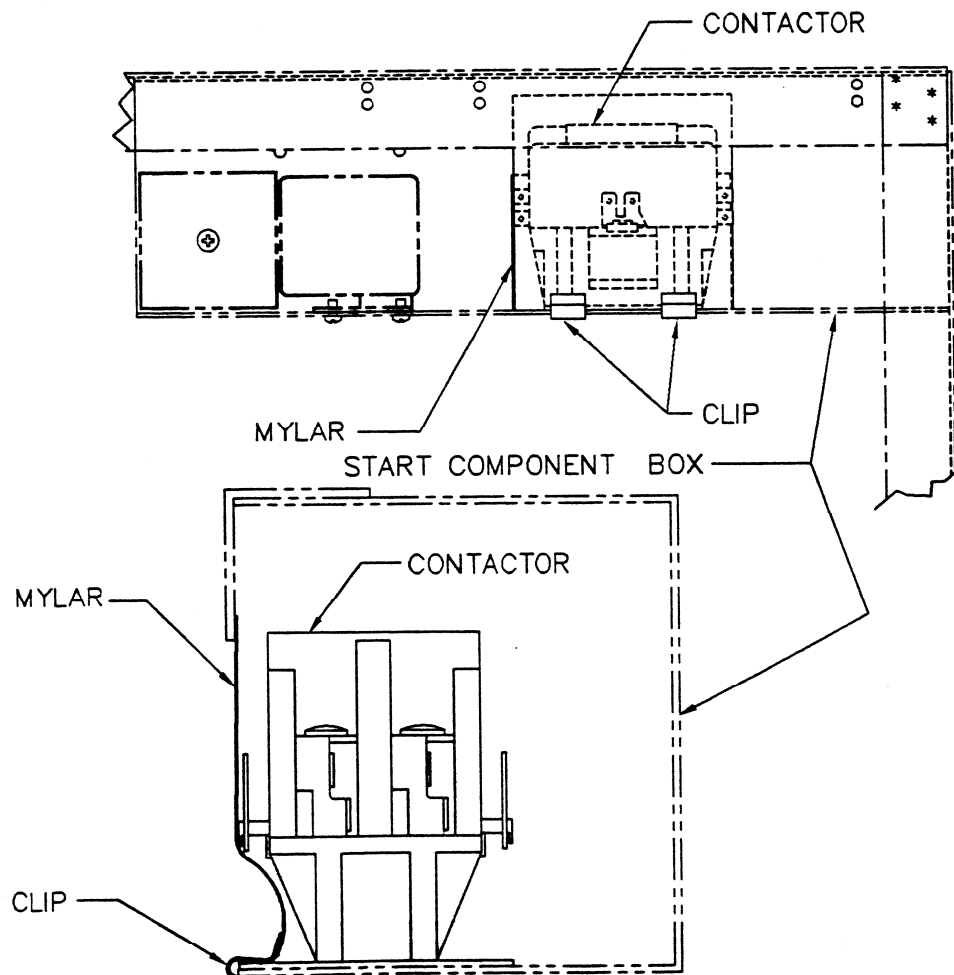


2410169 G-0600/G-0800 CONTACTOR RELOCATION Installation Instructions

Procedure:

1. Disconnect power supply to ice machine.
2. Remove old contactor.
3. **IMPORTANT:** The replacement contactor is to be mounted on the component box bottom in an upright position using the clips and Mylar enclosed (do not remount contactor in its original side position).

CAUTION: Mylar must be installed to prevent electrical arcing to metal surfaces.



Manitowoc Ice, Inc.
2110 South 26th Street, P.O. Box 1720, Manitowoc, WI 54221-1720 USA
Telephone 920-682-0161, Fax - Sales: 920-683-7589, Service/Parts: 920-683-7585, Other: 920-683-7879
Web Site - www.manitowocice.com

8008683
Rev. 09/08/03

Free Manuals Download Website

<http://myh66.com>

<http://usermanuals.us>

<http://www.somanuals.com>

<http://www.4manuals.cc>

<http://www.manual-lib.com>

<http://www.404manual.com>

<http://www.luxmanual.com>

<http://aubethermostatmanual.com>

Golf course search by state

<http://golfingnear.com>

Email search by domain

<http://emailbydomain.com>

Auto manuals search

<http://auto.somanuals.com>

TV manuals search

<http://tv.somanuals.com>