



## RF1200W Copper Water Piping Instructions

### Tools Required:

- Small cup or pail
- Utility knife
- Paper towel
- Adjustable wrenches (2)
- Braze rod
- Torch
- Flat blade screwdriver
- Phillips screwdriver
- Hammer
- 3/8" OD swaging tool
- Tubing cutter
- Deburring tool
- Sharpie marker
- Wet sponge/rag

### Instructions:

1. Disconnect power, condenser supply/drain, potable water supply/drain
2. Remove front, top and RH panels. Remove rear grille
3. Loosen both hose clamps on condenser hoses. Remove hose from condenser outlet (top)
4. With cup/pail at the ready, remove hose from condenser inlet (bottom). Drain condenser and hose
5. Loosen both hose clamps on water regulating valve. Using utility knife, cut both hose ends to facilitate hose removal from barbed fittings on valve
6. Remove both hoses and discard
7. Remove 2 screws from gray plastic drain manifold (some machines have brass winged adapter) on back panel; discard manifold
8. Remove 2 screws from condenser inlet fitting on back panel; save screws. Tilt top of fitting toward inside of machine and remove fitting and hose. Discard fitting and hose
9. Remove 2 screws from black plastic drain manifold on back panel; save screws. Temporarily move black manifold w/hose attached to other side of gear motor
10. Disconnect wires from potable water solenoid valve, then remove 2 screws from solenoid valve on back panel; save screws. IMPORTANT – Make sure solenoid valve hose is routed ABOVE the evaporator water inlet hose
11. With adjustable wrenches, remove top barbed fitting from water regulating valve. Then slightly loosen bottom barbed fitting. Remove 2 screws from water regulating valve bracket; discard screws. Remove bottom barbed fitting. Discard barbed fittings and bracket
12. Clean residual Teflon tape from inside threads on water regulating valve
13. Install flat bracket from kit onto inner most square hole in back panel. Bracket must be on outside of back panel
14. From kit, find two 3/8" brass adapters (Male BSPP x Female NPT) and two adapter seals. On 1<sup>st</sup> adapter, apply Teflon tape to male BSPP threads. From outside of the machine, with Teflon taped end 1<sup>st</sup>, insert 1<sup>st</sup> adapter thru flat bracket. Thread on one adapter seal over Teflon taped end of 1<sup>st</sup> adapter
15. Orient water regulating valve so flow arrow is pointing into machine. Thread 1<sup>st</sup> adapter into valve inlet. Tighten adapter securely to valve
16. Apply Teflon tape to 2<sup>nd</sup> adapter and thread on 2<sup>nd</sup> adapter seal. Install into outlet of water regulating valve. Tighten adapter securely to valve
17. Apply Teflon tape to NPT threaded end (not flared end) of 45° brass elbow. Thread taped end into adapter on water regulating valve outlet. Tighten elbow so 45° flare is pointing to water condenser

Manitowoc Ice

2110 South 26<sup>th</sup> Street, P.O. Box 1720, Manitowoc, WI 54221-1720 USA

Telephone 920-682-0161, Fax - Sales: 920-683-7589, Service/Parts: 920-683-7585, Other: 920-683-7879

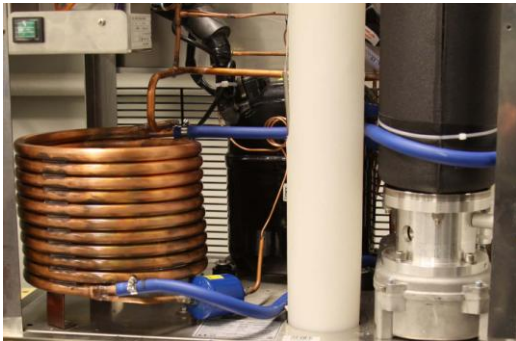
Web Site - [www.manitowocice.com](http://www.manitowocice.com)

000007058

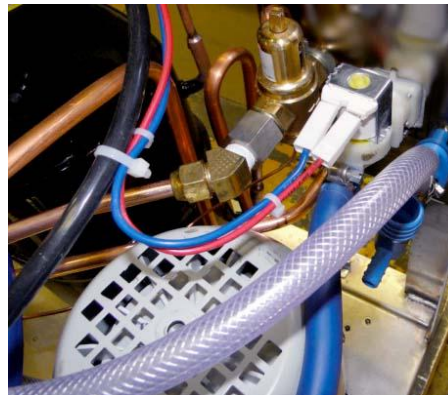
Rev 01

18. Prepare for brazing by blowing residual water out of condenser to extent possible
19. Swage both water connections on condenser
20. From kit, find copper tube with flare nut. From front of machine, feed flare nut end of copper tube between compressor and vertical white plastic ice tube to bottom condenser connection. Finger tighten flare nut to 45° elbow. Hold opposite tube end beside bottom condenser connection. Mark tube and cut to length. Install tube end into swaged connection. Tighten flare nut securely to 45° elbow
21. From kit, find copper tube with winged adapter. From back of machine, feed copper tube thru inner most round hole in back panel to top condenser connection. Hold tube end beside top condenser connection. Mark tube and cut to length. Install tube end into swaged connection. Fasten winged adapter to back panel with 2 screws and nuts from kit; tighten securely
22. Apply wet sponge/rag as necessary to protect refrigeration lines and insulation. Braze two connections on condenser
23. Feed solenoid valve into remaining square hole in back panel, install screws and tighten securely
24. Feed black plastic drain manifold into remaining round hole in back panel, install screws and tighten securely
25. Install grille and panels
26. Connect power, condenser supply/drain, potable water supply/drain
27. Renumber water connections on back panel label from 1,2,3,4,5 to 2,1,4,3,5

**BEFORE**



**AFTER**



Manitowoc Ice

2110 South 26<sup>th</sup> Street, P.O. Box 1720, Manitowoc, WI 54221-1720 USA

Telephone 920-682-0161, Fax - Sales: 920-683-7589, Service/Parts: 920-683-7585, Other: 920-683-7879

Web Site - [www.manitowocice.com](http://www.manitowocice.com)

000007058

Rev 01

## Free Manuals Download Website

<http://myh66.com>

<http://usermanuals.us>

<http://www.somanuals.com>

<http://www.4manuals.cc>

<http://www.manual-lib.com>

<http://www.404manual.com>

<http://www.luxmanual.com>

<http://aubethermostatmanual.com>

Golf course search by state

<http://golfingnear.com>

Email search by domain

<http://emailbydomain.com>

Auto manuals search

<http://auto.somanuals.com>

TV manuals search

<http://tv.somanuals.com>