

W8LD

Three-way downfill Line Array Element

features

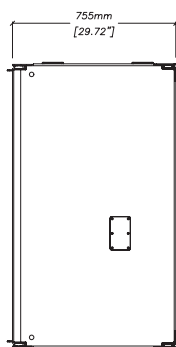
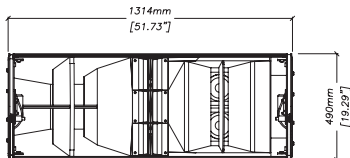
- High performance three-way line array downfill enclosure for use with W8L
- High power – maximum SPL 136dB continuous, 142dB peak (single unit)
- Superior bass impact – all horn design
- Wide bandwidth – 55Hz-18kHz \pm 3dB (single unit)
- True 120° (-6dB) horizontal mid and HF pattern control
- 20° vertical dispersion
- Smooth transition from W8LD to W8L array
- Fast, integral rigging system, connects directly to W8L
- Viewpoint™ array optimisation software

applications

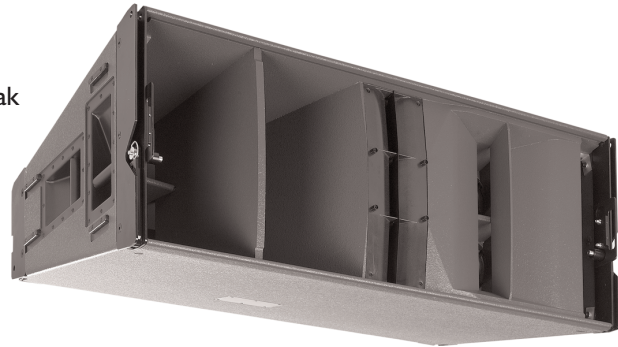
- Used at the bottom of W8L arrays in 1's or 2's to cover first 20m (two cabinets)
- Low profile sidefill, on top of W8LS
- Premium club installations

The Martin Audio Wavefront W8LD is a line array downfill enclosure which connects directly to the bottom of a W8L array and covers from the front row out to up to 20m when using two W8LD cabinets. The exceptionally wide 120° horizontal dispersion increases coverage to front row central and off-stage areas, with full pattern control maintained right up to 15kHz. The all-horn design follows the same format as the W8L and continues the extension of the line array at low, mid and high frequencies.

overall dimensions



W8LD



technical specifications

TYPE	Three-way downfill line array element
FREQUENCY RESPONSE (5)	55Hz-18kHz \pm 3dB
DRIVERS	12" (300mm)/4" (100mm) voice coil, neodymium magnet, Hybrid™ bass horn loaded 2 x 6.5" (165mm)/1.5" (37.5mm) coil drivers, horn loaded 3 x 1" (25mm) exit neodymium magnet HF compression drivers, horn loaded
RATED POWER (2)	LF: 1000W AES, 4000W peak MF: 200W AES, 800W peak HF: 200W AES, 800W peak
SENSITIVITY (6)	LF: 104.5dB MF: 107dB HF: 113dB
MAXIMUM SPL (calculated @ 1m)	LF: 134.5dB continuous, 140.5dB peak MF: 130dB continuous, 136dB peak HF: 136dB continuous, 142dB peak
NOMINAL IMPEDANCE	LF: 8 ohms MF: 8 ohms in UPPER mode, 12 ohms in LOWER mode HF: 6 ohms UPPER mode, 10 ohms in LOWER mode
DISPERSION (-6dB)	120° horizontal, 20° vertical
CROSSOVER	220Hz, 2.5kHz active
ENCLOSURE	Vertical trapezoid with 10° wall angle, multi-laminate birch ply construction
FINISH	Textured black paint
PROTECTIVE GRILLE	Black perforated steel
CONNECTORS	2 x Neutrik NL8
FITTINGS	Proprietary rigging system, 4 x bar handles, 8 x interlocking skids
DIMENSIONS (inc. wheelboard)	(W) 1314mm x (H) 490mm x (D) 755mm (855mm) (W) 51.7ins x (H) 19.3ins x (D) 29.7ins (33.7ins)
WEIGHT	95kg (209lbs)

Century Point, Halifax Road, Cressex Business Park,
High Wycombe, Buckinghamshire HP12 3SL, England.
Telephone: +44 (0)1494 535312 Facsimile: +44 (0)1494 438669
E-mail: info@martin-audio.com
All information is Copyright © 2006 Martin Audio Ltd.



www.martin-audio.com

Free Manuals Download Website

<http://myh66.com>

<http://usermanuals.us>

<http://www.somanuals.com>

<http://www.4manuals.cc>

<http://www.manual-lib.com>

<http://www.404manual.com>

<http://www.luxmanual.com>

<http://aubethermostatmanual.com>

Golf course search by state

<http://golfingnear.com>

Email search by domain

<http://emailbydomain.com>

Auto manuals search

<http://auto.somanuals.com>

TV manuals search

<http://tv.somanuals.com>