

maxell



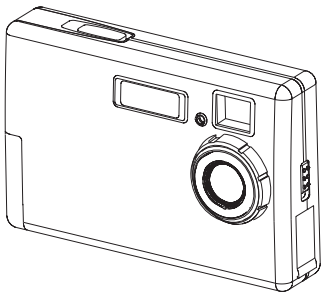
maxell SLIM
MS30

Welcome

Welcome to our MAXELL family. We strongly recommend that you read this User's Guide before operating your WS30 SLIM. You are on your way to experiencing a digital camera like no other. This easy-to-follow user's guide shows you how to use your new camera and software like a pro, whether you want to:

- download photos to your computer,
- send photos to family and friends,
- create cool invitations and greeting cards, and
- create a mini movie using the live video feature.

Before you begin, check the contents to make sure that all of the components are included.



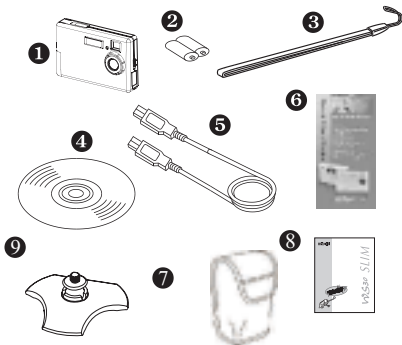
Contents

Welcome.....	1
WS30 SLIM Kit.....	3
Meet the WS30 SLIM.....	3
Features & Functions	4
Let's Get Started	6
Taking Pictures.....	7
LCD Control Panel.....	8
Accessing the CD.....	12
Installing the Software.....	12
Install Mr. Photo.....	13
Install ImageFolio.....	15
Install Video Works	17
Installing WS30 SLIM Driver.....	19
Getting Connected	20
Fun Things You Can Do- (Digital).....	21
Downloading Photos	
To download an individual photo	
Erasing Photos from WS30 SLIM	
Cropping the photo	
Fun Things You Can Do- (Video).....	24
Using the Video Recording Feature (Create AVI File)	
Using the Video Capture Feature	
Using the Video Conferencing Feature	
Where to get Help.....	28
Frequently Asked Questions	29
Additional Information	31

WS30 SLIM Kit

Your MAXELL WS30 SLIM Kit includes:

1. WS30 SLIM Camera
2. AAA alkaline batteries (2)
3. Camera Strap
4. Driving utility software CD
5. USB Cable
6. Quick Start Guide
7. Leatherette camera case
8. User's guide
9. Tripod



Meet the WS30 SLIM

This is not your traditional camera. This is a "digital" camera. A digital camera allows you to take pictures without the use of film.

With the WS30 SLIM, going digital is just the beginning. The WS30 SLIM is a 3-in-1, digital, PC and video camera all wrapped up in a compact camera .

Before going into creating fun projects with the WS30 SLIM, familiarize yourself with the cameras features and functions.

Features & Functions *Front of WS30 SLIM*

Standard Mode

The standard mode is used when taking pictures from 0.6 m (2ft) ~infinity.

Macro Switch

This switch is used to change from Standard to Macro mode.

Macro Mode

The macro mode is used to take close up pictures of 0.2 m (8 inch).

USB Connector

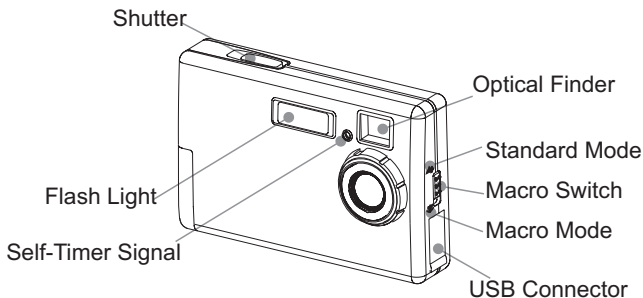
The USB Connector is the port where you plug the USB cable into when you want to download your photos to your computer.

Shutter

Press the Shutter button to take a picture.

Optical Finder

The optical finder or viewfinder is where you look into to compose the picture.



Features & Functions *Back of WS30 SLIM*

Battery Cover

The battery cover secures the batteries in place.

Macro Mode Signal

The Macro Mode signal becomes lit when you switch from standard mode to macro mode.

Busy Signal

The Busy Signal will blink if the camera is not ready to take a picture.

Menu Panel

The menu or control panel displays the various menu options.

Mode Button

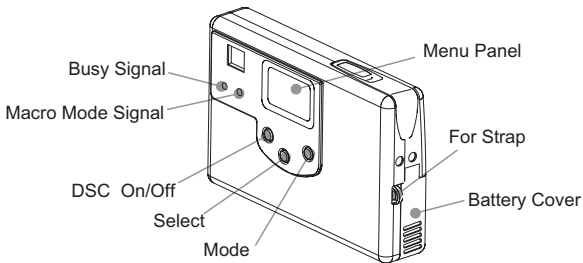
Press the mode button to switch between the camera's six modes.

DSC On/OFF Button

Press the DSC On/OFF button to turn the WS30 SLIM on and off.

Select Button

Press the Select button to select a menu function.



Let's Get Started

Attaching the camera strap

Attach the camera strap as shown in the illustration below.



Figure1

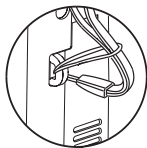


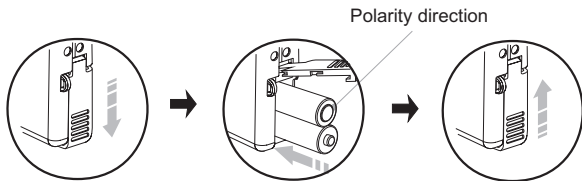
Figure 2

Inserting the Batteries

Step 1 Open the battery cover.

Step 2 Insert the batteries properly.

Step 3 Close and lock the battery cover.

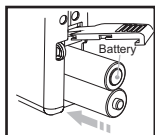


Precaution: Check the batteries for polarity. Remove the batteries if you are not going to use the camera. Do not short, disassemble or charge the batteries. Do not throw the batteries into a fire.

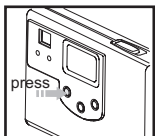
Taking Pictures

Now that the camera has batteries, let's take a few pictures to get started.

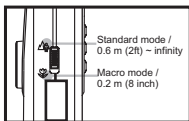
Step 1 Make sure the batteries are properly inserted into the camera.



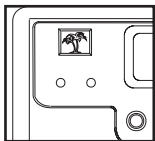
Step 2 Press the **DSC On** button. The camera will beep.



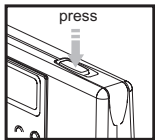
Step 3 Select **macro mode** or **standard mode**.



Step 4 Use the optical finder to compose the picture.

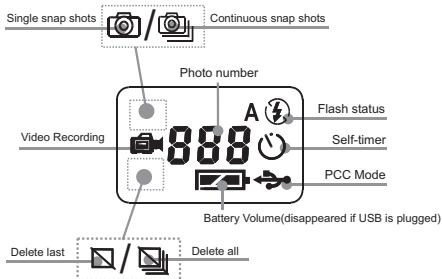


Step 5 Press **Shutter** button to take the picture. Wait for the beep to complete the picture.




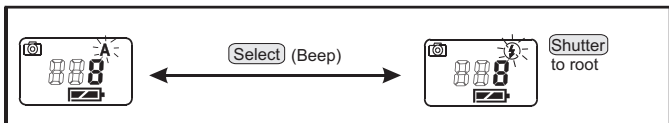
LCD Control Panel


Now that you are familiar with the basic steps to taking a picture, let's take a closer look at the menu or control panel.

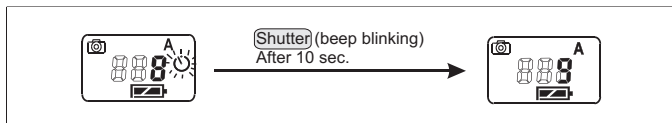



The WS30 SLIM has six functional modes.

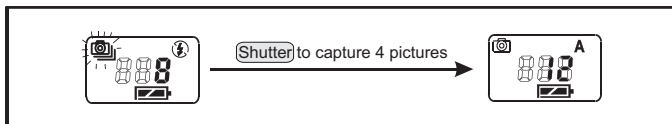
Mode 1: Flash - The Flash mode is used to add extra light to your image. Press the **Mode** button until "A" is blinking. This is the default Auto flash mode. The LCD displays "A" to turn the flash on. If  is displayed, the flash is turned off.




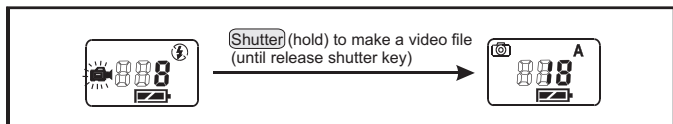
Mode 2: Self-Timer - The Self-Timer is used to take a picture with a 10 second delay. Press the **Mode** button until the self-timer symbol  is blinking. Take the picture by pressing the **Shutter** button. You have 10 seconds which is indicated by the camera beeping and the self-timer indicator blinking on the front of the camera.




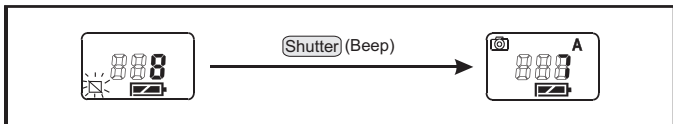
Mode 3: Continuous Snap Shots - The Continuous Snap Shots is used to continuously take four pictures at one time. Press the **Mode** button until the  is blinking. Press the **Shutter** button to take the pictures.




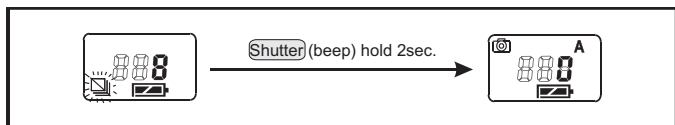
Mode 4: Video Recording - The Video Recording mode is used to create a video **AVI** file that you can mail. Press the **Mode** button until the  is blinking. Press and hold the **Shutter** button and using optical finder to compose images. When you complete the video file, release the shutter button.



Mode 5: Delete Last - The Delete Last mode is used to erase the last picture that you have taken with the camera. Press the **Mode** button until the  is blinking. Press the **Shutter** button to delete the last picture.



Mode 6: Delete All - The Delete All mode is used to erase all of the pictures from the WS30 SLIM . Press the **Mode** button until the  is blinking. Press the **Shutter** for 2 seconds to delete all of the pictures.



Accessing the CD

Step 1 Place the **MAXELL Digital** CD-ROM into the appropriate drive. The MAXELL Digital Main Menu screen should automatically appear.

Note: If the main menu screen doesn't appear follow the directions below.

Step 1 Double-click on the **My Computer** icon on your desktop.

Step 2 Double-click on the **CD-ROM** icon.

Step 3 Double-click on the **Autorun** icon.

Step 4 The MAXELL Digital Main Menu screen will appear.

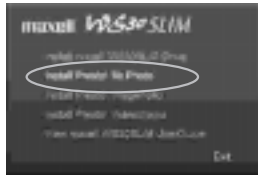


Installing the Software

Let's follow the order in which the software appears on the main menu to begin the install process. Please note that you **must** install all of the software options in order to download photos and take advantage of the WS30 SLIM features.

Install Mr. Photo

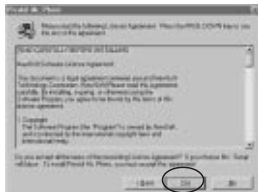
Step 1 Click on **Install Presto!**
Mr. Photo from the main menu.



Step 2 Click **Next** on the
Welcome screen.



Step 3 After reading the software
license agreement screen, click
Yes.



Note: If you click **No**, Mr. Photo
will not be installed onto your
computer.

Step 4 Click **Next** on the Choose
Destination Location screen.



Note: The Mr. Photo files are being
installed in the C:\ProgramFiles\
NewSoft\MrPhoto16 directory.

Step 5 Click **Next** on the Setup Type screen. The default setup is **Typical**.

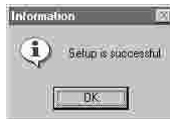


Step 6 Click **Next** on the Select Program Folder screen.

The files will begin to copy to your computer.



Step 7 Click **OK** on the Information screen.



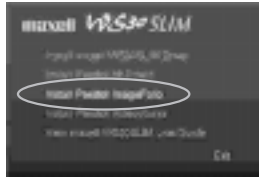
Step 8 Click **Yes** or **Register Later** on the Registration screen.

You will now see the Main Menu again to make your next selection.



Install ImageFolio

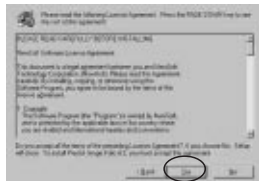
Step 1 Click on **Install Presto! ImageFolio** from the main menu.



Step 2 Click **Next** on the Welcome screen.



Step 3 After reading the software license agreement screen, click **Yes**.



Note: If you click **No**, ImageFolio will not be installed onto your computer.

Step 4 Click **Next** on the Choose Destination Location screen.



Note: The ImageFolio files are being installed in the C:\ProgramFiles \ NewSoft \ Presto! ImageFolio 4.2 directory.

Step 5 Click **Next** on the Setup Type screen. The default setup is **Typical**.



Step 6 Click **Next** on the Select Program Folder screen. The files will begin to copy to your computer.



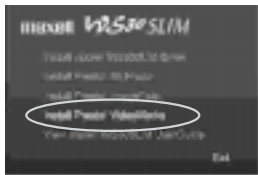
Step 7 Click **Finish** on the Setup Complete screen.



You will now see the Main Menu again to make your next selection.

Install VideoWorks

Step 1 Click on **Install Presto!**
VideoWorks from the main menu.



Step 2 Click **Next** on the
Welcome screen.



Step 3 After reading the software
license agreement screen, click
Yes.



Note: If you click **No**, VideoWorks will not be installed onto your computer.

Step 4 Click **Next** on the Choose
Destination Location screen.



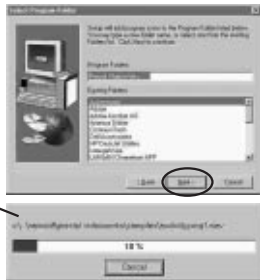
Note: The VideoWorks files are being installed in the C:\ProgramFiles\NewSoft\Presto VideoWorks directory.

Step 5 Click **Next** on the Setup Type screen. The default setup is **Typical**.



Step 6 Click **Next** on the Select Program Folder screen.

The files will begin to copy to your computer.



Step 7 Click **Finish** on the Setup Complete screen.

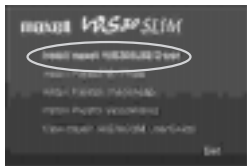
You will now see the Main Menu again to make your next selection.



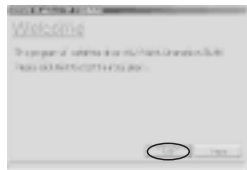
Install WS30 SLIM Driver

In order for you to download pictures from the camera to your computer, you will need to install WS30 SLIM Driver .

Step 1 Click on **Install MAXELL WS30 SLIM Driver** from the main menu.



Step 2 Click **Next** on the Welcome screen.



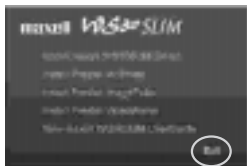
Step 3 Click **Finish** on the Installation Completed screen.

Note: In order for all of the software to take effect, your computer will automatically restart. Once you have rebooted your computer, you are now ready to exit the main menu.



Step 1 Click **Exit** on the Main Menu screen.

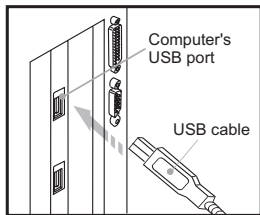
Note: Each software program group (Mr. Photo , ImageFolio, VideoWorks) contains a User's Manual provided by the software manufacturer. These manuals provide in-depth information on each program than described in this User's Guide.



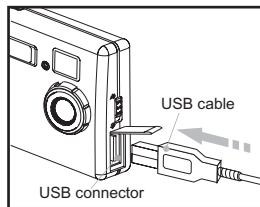
Getting Connected

To connect the camera to the computer.

Step 1 Connect the **USB cable** to the **USB port** on your computer.



Step 2 Connect the other end of the **USB cable** to your camera **USB connector**.



The MAXELL WS30 SLIM Digital Camera has three operating modes: Digital, Video, and PC.

Digital = Take digital pictures with the WS30 SLIM. No need for film. Download them to your computer.

Video = Create a mini video with the WS30 SLIM's live video feature. When connected via the USB cable, you now have a video camera.

PC = The WS30 SLIM camera can be used for video conferences.

Fun Things You Can Do-(Digital)

Downloading Photos

Important Note: Please make sure that the display indicates numbers for example "10". If not, press the DSC ON button.

Step 1 Connect the WS30 SLIM to your computer using the USB cable.

Note: Refer to the "**Getting Connected**" section on page 20 if you need assistance.

Step 2 Click on **Start** from the Windows Task Bar.

Step 3 Click on **Programs**.

Step 4 Click on **Presto! Mr. Photo** program group.

Step 5 Click on the **Mr. Photo** icon.

Step 6 Right-click on the camera icon  located on the upper-left hand corner of the screen.



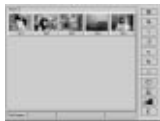
Step 7 Click on the **Source** drop-down arrow and select MAXELL WS30 SLIM Digital Camera.

Note: You can specify the download folder for the photos by changing the path name.

Step 8 Click **OK**.

Step 9 Click on the Camera  icon. Your photos will now appear in the Thumbnail viewer.

The thumbnail viewer allows you to view photos that are stored in the WS30 SLIM's memory. You are now ready to download your photos to your computer.



To download an individual photo

Step 10 Click on the desired photo.
The photo number will turn red when selected.

Step 11 Click on the **Transfer** button located at the bottom of the thumbnail viewer.

Step 12 Click **OK** on the Transfer Done screen.




Note: To download all of the photos, click on the **Select All** button. Next, click on the **Transfer** button. To download files in a non-consecutive order, just click on the desired photos, then click on the **Transfer** button.

Step 13 Click on the **Exit** button when you have finished downloading your photos. You will now see all of your photos displayed in the Mr. Photo thumbnail viewer.

Erasing Photos from WS30 SLIM


Let's take a minute to erase the photos from the WS30 SLIM. To erase all of the photos:

Step 1 Disconnect the camera from the USB cable.

Step 2 Press the **Mode** button until you see the icon  appear in the menu panel.

Step 3 Press and hold the **Shutter** button down for 2 seconds. Notice how the menu panel displays zero (0) photos.

Step 4 Press the **DSC On** button to turn the camera off.

Note: When the camera is connected to the computer by the USB cable, you can click on the  button located at the thumbnail viewer.

Cropping the photo

Back to our exercise. Let's prepare our photo that we downloaded to send to mom and dad in an email. Since Mr. Photo is still open, let's make a quick change to our photo.

Note: All of the software programs that were included with your WS30 SLIM CD contain individual user's manuals provided by the software manufacturer. Refer to each for in-depth information on each program.

Step 1 Double-click on the photo that we are sending to mom and dad.

Let's crop the picture to remove the extra background contents.



Step 2 Click on the **Advanced**  button. Notice how the cropping tool appears over the photo.

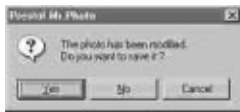


Step 3 Click and drag the cropping handles to the desired location.

Step 4 Click on the **Crop**  button.

Step 5 Click on the **Exit**  button.

Step 6 Click **Yes** to save the new picture.



Fun Things You Can Do-(Video)

Using the Video Recording Feature (Create AVI File)

To use the video recording feature follow the steps below.

Step 1 Make sure the batteries are properly inserted into the camera.

Step 2 Press the **DSC On** button. The camera will beep.

Step 3 Press the **Mode** button until you see the icon  appear.

Step 4 Press and hold the **Shutter** button, using optical finder to compose images.

Step 5 Release the **Shutter** button when you complete a video file.

Note: If the video is under 8 MB, you can record several Video files.

Step 6 Connect the WS30 SLIM to your computer via the USB cable.

Note: Refer to the "Getting Connected" section on Page 20 for assistance.

Step 7 Click on **Start** from the Windows Task Bar.

Step 8 Click on **Programs**.

Step 9 Click on the **MAXELL WS30 SLIM Digital Camera** program group.

Step 10 Click on the **WS30 SLIM Digital Camera** icon. Your photos will now appear .


Step 11 Click on the **Video Clip**  icon.



The Video screen appears .



Step 12 Select the **AVI**

Step 13 Click on the **Run** icon .

Note: You can change the Frame rate.




Step 14 Type in the file name and click on **Save**.




Step 15 The video file is being created.



Step 16 Click on the  button.



Step 17 The AVI File is now complete, and you can email it to your friends and family.

Note: You can find this AVI file by pressing on the button .



Using the Video Capture Feature

To use the video capture feature follow the steps below.

Step 1 Connect the WS30 SLIM to your computer via the USB cable.

Note: Refer to the "**Getting Connected**" section on Page 20 for assistance.

Step 2 Click on **Start** from the Windows Task Bar.

Step 3 Click on **Programs**.

Step 4 Click on the **Presto! Video Works** program group.

Step 5 Click on the **Presto! Video Works** icon.

Step 6 Click on **Capture** from the menubar.



Step 7 Click on **Select Image Source** from the drop down menu.

The select source screen appears.



Step 8 Click on **MAXELL WS30 SLIM Digital Camera**.



Step 9 Click on the **Select** button.

Step 10 Click on the **Capture Video**  icon which is located on the tool bar to begin capturing video.

The video viewer screen appears.



Step 11 Click on the **Sequence Capture**  icon on the video viewer.

Step 12 Click **OK** on the Capture Video Sequence screen.



Step 13 Click **OK** to start capturing video.
The capture screen appears.



Step 14 Click on the **Save** icon located on the toolbar to save your video file.

Using the Video Conferencing Feature

When using the WS30 SLIM along with a video conferencing software such as MicroSoft NetMeeting, you can communicate with others over the Internet or local Intranet.

Where to get Help

Help with your WS30 SLIM Camera is available from several resources:

Software Help

Help with any software packaged with this camera can be found under the help menu located on the menubar for each program, FAQs or by contacting the manufacturer of the software.

Customer Support

If you have any questions about the camera, software or connections to your computer, you should:

Website: [www. Maxellcanada.com](http://www.Maxellcanada.com)

Office

Maxell Canada
50 Locke Street, Unit 2
Concord. Ontario. Canada
L4K 5R4
1 800 661 9500 - customer service #
[www. Maxellcanada.com](http://www.Maxellcanada.com)

Frequently Asked Questions

Q: I've correctly installed the software, connected my camera to my PC, but get a flashing busy light or nothing at all. What does this mean?

A:

Step 1 Double-click on **My Computer** which is located on your desktop.

Step 2 Double-click on the **Control Panel** folder.

Step 3 Double-click on the **System** icon. This is usually located near the bottom of the window. You will now be at the System Properties window.

Step 4 Click on the second tab, **Device Manager**. Here we are looking for two things. About 5 icons down, you should see an icon labeled **"Imaging"**.

Step 5 Click on the **plus (+)** sign located to the left of Imaging to open it.

Step 6 Further down the list, look for an icon that says **"Universal Host Controller"**. If you do not find an icon, contact your PC manufacturer, as the USB port will need to be enabled in the BIOS section of your computer.

Step 7 With the camera installed, there will be a listing matching the description of the mode of the camera, i.e., WS30 SLIM Digital Camera and WS30 SLIM Video Camera. If the icons are marked in red or any other color, the driver is not installed properly.

Step 8 Reinstall the driver.

Step 9 Restart your computer.

If this is not successful, call our tech support line at, **1 800 661 9500**, or email **www. Maxellcanada.com**. Be sure to include a telephone number in your message so we can contact you.

Q: How do I delete the photos from my camera once they have been downloaded?

A:

Step 1 Press the **Mode** button until you see the icon appears in the menu panel.

Step 2 Press and hold the **Shutter** button down for 2 seconds. Notice how the menu panel displays zero (0) photos.

Q: How do I save my photos to my computer from the camera?

A:

After following the "**Downloading Photos**" section on page 21 , you will receive the thumbnail image which is a visual representation of all photos in the camera. These are not actual photos.

Step 1 Click on the **SelectAll** button. This will highlight all of the photos in the thumbnail viewer.

Note: To select individual photos . Once you have selected the photos, you are ready to transfer them.

Step 2 Click on the **Transfer** (download) button. You will now see your photos being transferred to your computer.

Step 3 Click on the **Finish** button when you have completed the download.

Note: When you download photos from your camera, they will be saved in the **C:\MyPhotos** directory.

From here, you can now manipulate (edit, crop, print, touchup, etc.)your photos.

Additional Information

System Requirements

Windows 98/ME/2000
Pentium or higher
CD-ROM drive
65 MB hard drive space
32 MB RAM (64 MB recommended)
USB port

Technical Specifications

Image resolution: Max: 640 x 480
Min: 160 x 120
24- bit true color
Storage Media: On board 8 MB
Flash modes: auto-flash/off
Self-timer: 10 second delay
Focus 8 inch (0.2 m) macro mode / 2ft (0.6m) to infinity from camera
Electronic shutter: ~1/10000 sec - DSC (Camera mode)
1~1/10000 sec- PCC (Video mode)
Can delete all or last picture
Use 2 AAA alkaline batteries as power source
Interface: USB
WS30 SLIM will automatically turn off the power if inactive for more than 2 minutes.

Maintenance and Storage

Usage environment /temperature: 0 to 40 degrees Celsius

Usage environment/relative humidity:45% ~85%

Do not use or store this camera in environments direct sunlight, high humidity and dusty places, next to air conditioner, electric heater or other heat sources, in a closed car that is in direct sunlight, and avoid shaky places.

If this camera becomes wet, wipe it with a dry cloth as soon as possible.

Salt or seawater may cause severe camera damage.

Do not use organic solvents, such as alcohol, to clean the camera.

If the lens or viewfinder are dirty, use a lens brush or soft cloth. Never use your fingers.

To prevent electrical shock, do not attempt to disassemble or repair the camera. Water may cause fire or electric shock, please store in a dry place.

If a foreign substance or water gets in the camera, turn the power off and remove the batteries. If possible remove the foreign substance and send it to the maintenance center.

Transfer the data to your computer as soon as possible to avoid losing your images.

MAXELL CANADA

Maxell Canada
50 Locke Street, Unit 2
Concord, Ontario, Canada
L4K 5R4
1 800 661 9500 - customer service #
[www. Maxellcanada.com](http://www.Maxellcanada.com)

1-626-13-0011-01

Free Manuals Download Website

<http://myh66.com>

<http://usermanuals.us>

<http://www.somanuals.com>

<http://www.4manuals.cc>

<http://www.manual-lib.com>

<http://www.404manual.com>

<http://www.luxmanual.com>

<http://aubethermostatmanual.com>

Golf course search by state

<http://golfingnear.com>

Email search by domain

<http://emailbydomain.com>

Auto manuals search

<http://auto.somanuals.com>

TV manuals search

<http://tv.somanuals.com>