

mellerware®
makes life easier

SWIFT hair clipper set



Powerful and quiet machine
with adjustable blade-control

Ergonomic design for
comfortable use

Extra blade included



complies with
INTERNATIONAL
IEC60335
SAFETY SPECIFICATIONS

m
7 W

2 YEAR
GUARANTEE

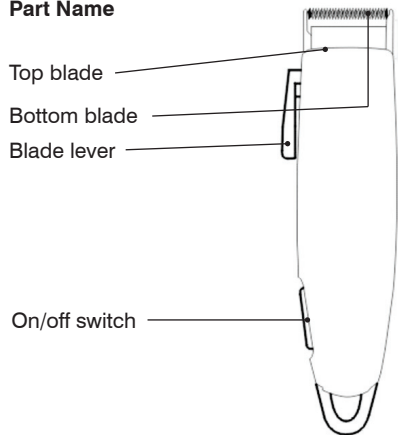
Model:
20800



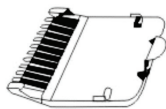
PROFESSIONAL HAIR CLIPPER INSTRUCTION MANUAL

READ ALL INSTRUCTIONS BEFORE USING AND STORE FOR SAFEKEEPING.

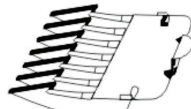
Part Name



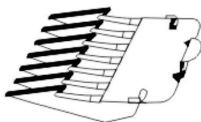
ACCESSORIES



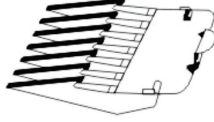
Attachment Comb #1



Attachment Comb #2



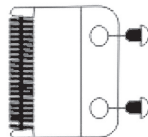
Attachment Comb #3



Attachment Comb #4



Blade Cover



Extra Blade



Comb



Scissors



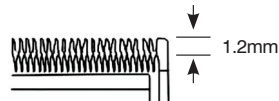
Oil



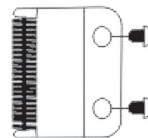
Brush

BLADE ALIGNMENT

- Your clippers were carefully examined to ensure that the blades were oiled and aligned before leaving the factory.
- Blades must be realigned if they have been removed for cleaning or replacement.
- To realign the blades, each upper blade tip should be in line with the corresponding lower blade tip.
(The bottom blade's teeth tips should be approximately 1.2mm below the top blade's teeth tips.)



- If blade alignment is incorrect, add a few drops of oil to the blades, switch on clipper for a few seconds, switch off and unplug. Loosen screws slightly and adjust. Tighten screws after blade is aligned.
- To change blade, use Phillips screw driver to loosen 2 screws.
- Remove blade and replace with new blade.
- Align top blade then place bottom blade over top blade and insert screws and tighten slightly.
- Align bottom blade as explained in "BLADE ALIGNMENT" & tighten screws further to secure bottom blade in place.



OIL

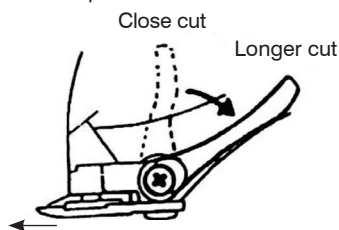
- To keep your clipper in peak condition, the blades should be oiled every few uses.
- Do not use hair oil, grease, oil mixed with kerosene or any other solvent. The solvent will evaporate and leave a thick layer of oil which may slow down the blade's motion.





BLADE LEVER

- The lever is conveniently located above the on/off switch so it can easily be adjusted while the clipper is in your hand.
- The lever adds versatility to the clipper by allowing a gradual change to the length of a cut without an attachment comb.
- When the lever is in the uppermost position, the blades will give the closest cut leaving the hair very short. Pushing the lever gradually downward increases the cutting length.
- In its lowest position, the lever will leave the hair approximately the same length as a #1 comb.
- The lever will also extend the blade's life as a longer cut requires less work from the blades.
- While the clipper is running, move the Lever from "close cut" to "longer cut" a number of times. This will help keep cut hair away from the blades. If the clipper stops cutting, and the method above does not help, then the blades are blunt and need to be replaced.



- Close supervision is necessary when this appliance is used by, on, or near children or people with reduced physical, sensory or mental capabilities.
- This appliance is not intended for use by persons (including children) with reduced physical, sensory or mental capabilities, or lack of experience and knowledge, unless they have been given supervision or instruction concerning use of the appliance by a person responsible for their safety.
- Children should be supervised to ensure that they do not play with the appliance.
- Never operate this appliance if it has a damaged cord or plug or if it has malfunctioned.
- Keep the cord away from rough, sharp or heated surfaces.
- Do not pull, twist, or wrap the cord around the appliance.
- Never drop or insert any object into any opening in this appliance.
- Before use, ensure that the blades are correctly aligned.
- Do not place the appliance on any surface while it is operating.
- Do not use this appliance with a damaged or broken comb nor with teeth missing from the blades as injury may occur.

IMPORTANT SAFEGUARDS

When using electrical appliances, especially when children are present, basic safety precautions should always be followed, including the following:

To reduce the risk of death or injury by electric shock:

- Unplug this appliance before cleaning.
- Do not place or store the appliance where it can fall or be pulled into a bath or sink.
- Do not use while bathing or showering.
- Do not place in, or drop into, water or other liquid.
- Do not reach for an appliance that has fallen into water. Unplug immediately.

To reduce the risk of burn, electric shock, fire or injury to persons:

- Use this appliance only for its intended use as described in this manual. Do not use attachments not recommended by the manufacturer.
- This appliance should never be left unattended when plugged in.

INSTRUCTIONS FOR HAIR CUTTING

Before using clippers to cut hair:

1. Inspect the clipper, making sure that it is free of oil between the cutting blade teeth. Switch on the unit to distribute the oil and to ensure that it is running smoothly. Wipe off any excess oil. This should be done after each use. Unwind and straighten the cord during use in order to avoid tangling.
2. Ensure that the person that is going to have their hair cut is properly seated and that the hair to be cut is at eye level. This allows easy visibility while cutting and complete control of the clipper.
3. Before cutting hair, brush/comb the hair so that it is straight & tangle free.
4. Place a towel around the neck and shoulders of the person having the haircut.

REMINDERS

- Cut the hair in a relaxed and slow manner. Use short strokes and work gradually over the entire head.
- Always take off a little hair at a time; you can



always trim off additional hair later.

- As you work, brush/comb the hair frequently back into the style to which you are cutting.
- Make sure that hair is dry for using the clipper.

BEGINNING THE HAIRCUT

Cutting hair requires practice. When cutting for the first time, always use a longer comb and then change combs to cut hair shorter if required/ preferred.

ATTACHMENT COMB (see main diagram)

- Attachment Comb #1 leaves 3mm hair length.
- Attachment Comb #2 leaves 6mm hair length.
- Attachment Comb #3 leaves 9mm hair length.
- Attachment Comb #4 leaves 12mm hair length.

Each comb attachment is marked accordingly on the outside surface.

- To attach a comb, hold comb with the teeth showing upward and slide it onto and along the clipper blade until the front of the comb firmly clicks into the clipper blade.
- To remove the comb, simply pull the comb upward and away from the clipper blade.

STEP 1 - NAPE OF THE NECK

1. Attach comb attachment 3mm or 6mm.
2. Hold the clipper cutting edge pointing upwards and begin the haircut, starting in the middle of the base of the neck (see diagram 1).
3. Hold the clipper comfortably in your hand and hold lightly against the head with the comb teeth pointing upward. Gradually and slowly lift the clipper working upwards and outwards, through the hair, trimming just a little at a time.
4. As you cut, gradually lift the clipper head towards you. Continue to cut the back area from the bottom of the neck upwards to the top of the ears.

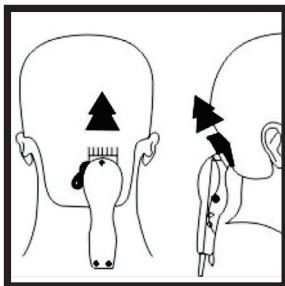


DIAGRAM 1

STEP 2 - BACK OF THE HEAD

1. Change to the next longest comb attachment 9mm or 12mm and cut the hair on the back of the head (see diagram 2).

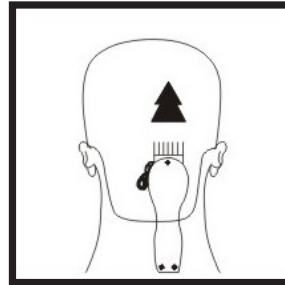


DIAGRAM 2

STEP 3 - SIDE OF THE HEAD

1. Change to one of the shorter combs 3mm or 6mm, trim sideburns, i.e. the hair directly in front of the ears. Change to one of the longer combs, 9mm or 12mm, and continue to cut to the top of the head (see diagram 3).

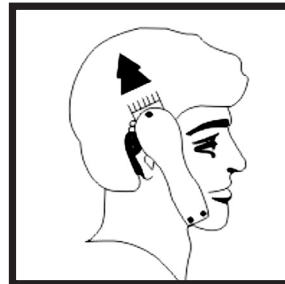


DIAGRAM 3

STEP 4 - TOP OF THE HEAD

1. Using the 9mm or 12mm comb attachment, cut hair on the top of the head from back to front against the direction in which the hair normally grows (see diagram 4). In some cases, this may require the reverse, or cutting from front to back.
2. Comb attachments 3mm or 6mm are used to achieve a close crew cut or short cut.
3. For longer hair on top, lift the hair with a comb or hold the hair between your fingers and use the clippers to cut to the desired length (see diagrams 5 and 6). Always work from the back of the head. Hair can be cut shorter gradually by reducing the space between the comb/ fingers, and the head. Comb out trimmed hair and check for uneven strands.



DIAGRAM 4

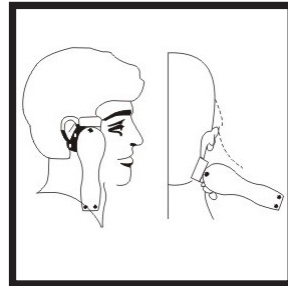


DIAGRAM 7

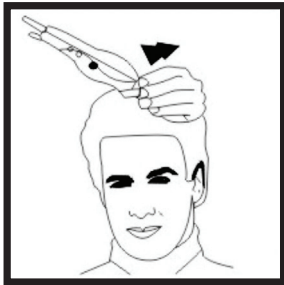


DIAGRAM 5



DIAGRAM 6

SHORT TAPERED STYLES 'FLAT TOPS' AND SHORT CUTS

1. Starting with the longest attachment comb (12mm), cut from the back of the neck to the crown. Hold the attachment comb flat against the head and slowly move the clipper through the hair, as shown (see diagram 8).
2. Use the same procedure from the lower side to the upper side of the head, as illustrated. Cut the hair against the direction to which it grows from the front to the crown and then level the cut with the sides.
3. To give a 'flat top' look, the hair on top of the head must be cut over the top of a flat comb instead of using the attachment comb.
4. Use closer cutting attachment combs to taper the hair down to the neckline as desired. Comb hair and check for uneven areas.

STEP 5 - THE FINISHING TOUCH

1. Finally, use the blade without an attachment comb for close trimming around the base of the neck, the sides of the neck and the ears.
2. To produce a clean straight line at the sideburns, reverse the clipper by turning the reverse side upwards (see diagram 7).
3. Place the clipper at a 90° angle towards the head, allow the tips of the blades to lightly touch the skin and work downwards. This method will give a cut as clean as that of a razor.

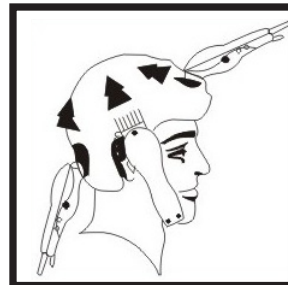


DIAGRAM 8



creative housewares

🏠 20 Tekstiel Street, Parow, Cape Town, 7493, South Africa

✉ P.O. Box 6156 Parow East, 7501, South Africa

☎ +27 21 931 8117 📠 +27 21 931 4058

Service Centre Helpline: 086 111 5006

🌐 www.creativehousewares.co.za

Free Manuals Download Website

<http://myh66.com>

<http://usermanuals.us>

<http://www.somanuals.com>

<http://www.4manuals.cc>

<http://www.manual-lib.com>

<http://www.404manual.com>

<http://www.luxmanual.com>

<http://aubethermostatmanual.com>

Golf course search by state

<http://golfingnear.com>

Email search by domain

<http://emailbydomain.com>

Auto manuals search

<http://auto.somanuals.com>

TV manuals search

<http://tv.somanuals.com>