

mellerware®

TRENDS FOR LIFE



turbo glide ss  
steam iron



complies with  
INTERNATIONAL  
IEC60335  
SAFETY SPECIFICATIONS

**m**  
2 0 0 0 W

**CE**  
2 YEAR  
GUARANTEE

Model:  
2 3 4 6 0

PLEASE READ ALL INSTRUCTIONS BEFORE USE



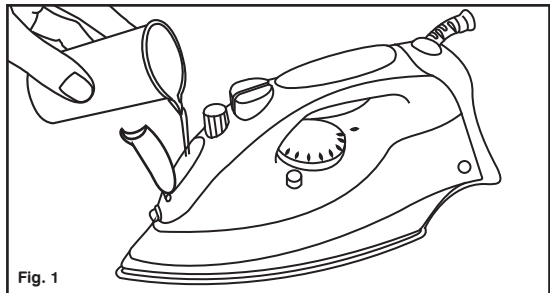
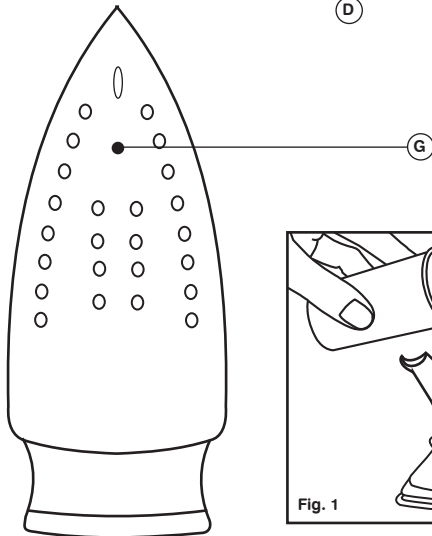
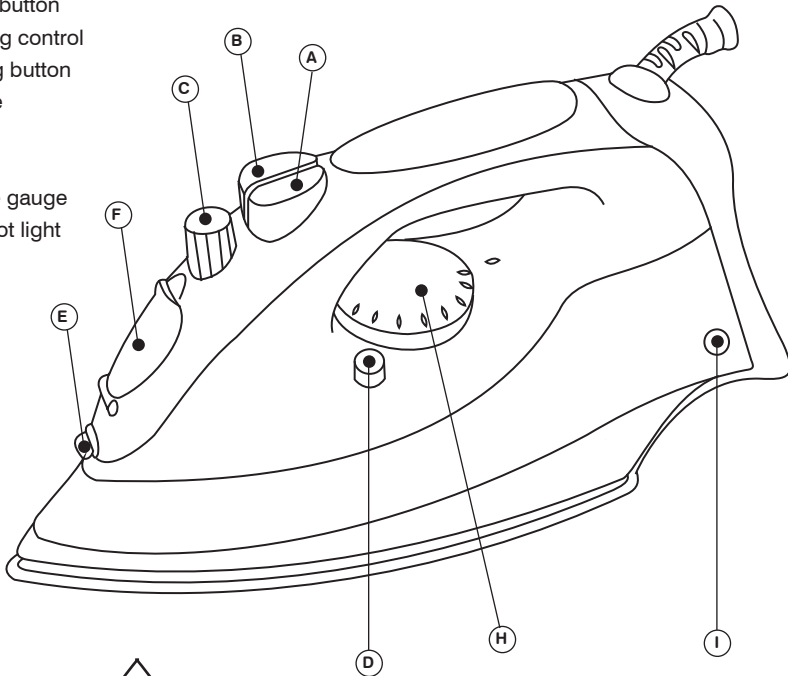


Dear customer,

Many thanks for choosing to purchase a Mellerware brand product. Its technology, design and operation and the fact that it exceeds the strictest quality standards, ensures it will give you full satisfaction for a very long time.

### Description

- A Spray button
- B Steam blast button
- C Steam setting control
- D Self-cleaning button
- E Spray nozzle
- F Filling hole
- G Base
- H Temperature gauge
- I Iron ready pilot light





## Safety advice and warnings

- Read these instructions carefully before switching the appliance on and keep them for future consultation. Failure to follow and observe these instructions may result in an accident.
- Some parts of the iron have been lightly greased, so the iron may produce a little smoke when plugged in for the first time. This will stop after a short period of time.
- Before using the iron for the first time, remove the plastic cover from the base and clean the base with a soft cloth.
- Pure wool fabrics (100%) can be ironed with the iron set to steam. Preferably chose a high steam setting and use a dry ironing cloth.

## Use or working environment:

- Keep children and bystanders away when using this appliance.
- The appliance must be used and placed on a flat, stable surface.

## Electrical safety:

- Fully unravel the power cable.
- Always unplug the iron when not in use, even for a short period.
- Unplug the iron before filling or emptying the water tank.
- Do not leave the appliance out in the rain or exposed to moisture. If water gets into the appliance, this will increase the risk of electric shock.
- Do not use the appliance if it has fallen on the floor, if there are visible signs of damage or if it has a leak.
- Do not use the appliance near bathtubs, showers or swimming pools.
- Keep the appliance well away from heat sources, oil, sharp edges or moving parts. Damaged or tangled cables increase the risk of electric shock.
- Do not use the appliance if the cable or plug is damaged.
- Ensure that the voltage indicated on the nameplate matches the mains voltage before plugging

in the appliance.

- Connect the appliance to a base with an earthed socket rated at 16 amps.
- The appliance's plug must fit into the mains socket properly. Do not alter the plug. Do not use plug adaptors.
- Do not use or store the appliance outdoors.

## Steam blast:

Steam blasts give an extra steam jet to help remove tough creases.

- Select the maximum temperature\*\*\* on the temperature gauge (H). Wait for the pilot light to go off (I).
- Press the steam blast button (B). Wait some seconds until vapour penetrates the fibres before pushing the button again. For optimum steam quality, do not apply more than three successive blasts. The spray button has to be pressed repeatedly to release the first spray.

## Once you have finished using the appliance:

- Select the minimum position (MIN) using the thermostat control.
- Unplug the appliance from the mains.

## Cleaning

- Disconnect the appliance from the mains and allow to cool before undertaking any cleaning task.
- Clean the equipment with a damp cloth with a few drops of washing-up liquid and then dry.
- Do not use solvents, or products with an acid or base pH such as bleach, or abrasive products, for cleaning the appliance.
- Never submerge the appliance in water or any other liquid or put it under running water.

## Self-cleaning function:

- It is important to self-clean the appliance at least once a month to remove calcium and any other built-up minerals inside the iron.
- Fill the tank to the top.



- Stand the iron upright and press the plug it in.
- Turn the temperature gauge to the \*\*\*position.
- Let the iron heat up until the pilot light goes off and comes back on again.
- Unplug the iron and place it over the sink.
- Push the self-cleaning button (D) and keep it pushed down.
- Let the water flow out through the steam vents in the base, while lightly shaking the iron.
- Release the self-cleaning button after a moment or when the tank has emptied and place the iron in an upright position.
- Let the iron cool and then clean it.

### **Anomalies and repair**

Go to an authorized Technical Support Service in the event of malfunctions. Do not try to dismantle or repair the iron yourself, as this may be dangerous. If the connection to the mains has been damaged, it must be replaced, and you should proceed as you would in the case of damage.

### **Ecology and recyclability of the product**

- The materials of which the packaging of this appliance consists are included in a collection, classification and recycling system. Should you wish to dispose of them, use the appropriate public containers for each type of material.
- The product does not contain concentrations of substances which could be considered harmful to the environment.
- Should you wish to dispose of the product once its working life has ended, take it to an authorised waste agent for the selective collection of waste from electric and electronic appliances.





creative housewares

27 Nourse Avenue Epping 2 Cape Town  
PO. Box 975 Eppindust 7475 South Africa  
Tel: +27 21 534 8114 Fax: +27 21 534 8086  
Service Centre Share Call: 086 111 5006  
web: [www.creativehousewares.co.za](http://www.creativehousewares.co.za)



## Free Manuals Download Website

<http://myh66.com>

<http://usermanuals.us>

<http://www.somanuals.com>

<http://www.4manuals.cc>

<http://www.manual-lib.com>

<http://www.404manual.com>

<http://www.luxmanual.com>

<http://aubethermostatmanual.com>

Golf course search by state

<http://golfingnear.com>

Email search by domain

<http://emailbydomain.com>

Auto manuals search

<http://auto.somanuals.com>

TV manuals search

<http://tv.somanuals.com>