

mellerware®

E X E C U T I V E  
S A V O Y M E A T M I N C E R



complies with  
INTERNATIONAL  
IEC60335  
SAFETY SPECIFICATIONS

**m**  
550W

2 YEAR  
GUARANTEE

Model:  
26602

PLEASE READ ALL INSTRUCTIONS BEFORE USE

**2 year guarantee**

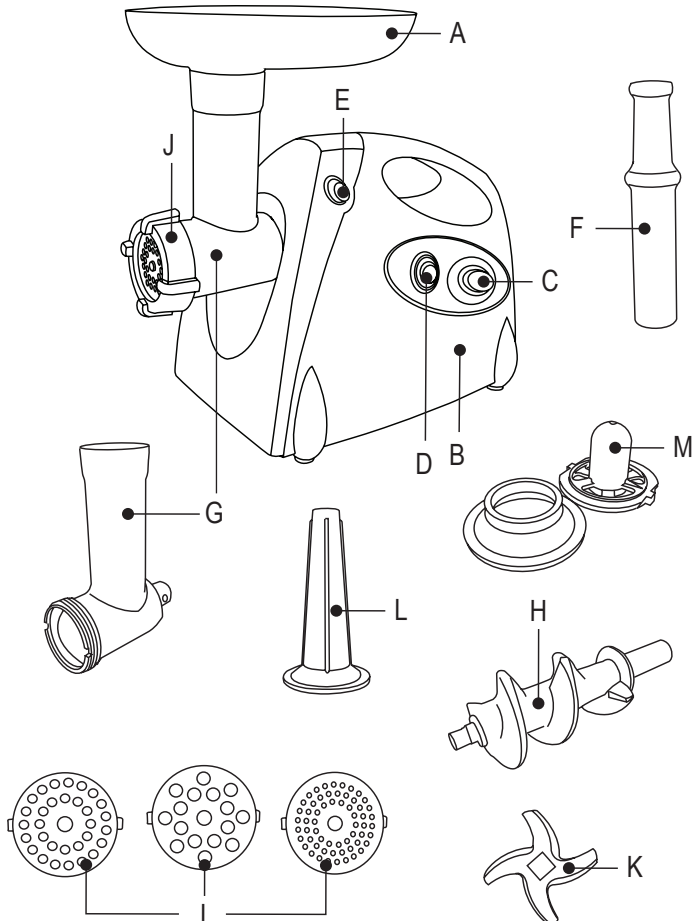


Dear customer,

Many thanks for choosing to purchase a Mellerware brand product. Thanks to its technology, design and operation and the fact that it exceeds the strictest quality standards, a fully satisfactory use and long product life can be assured.

### Description

- A - Tray
- B - Body
- C - On/Off/Reverse switch button
- D - I/ II speed switch button
- E - Lock button
- F - Food pusher
- G - Mincing head
- H - Endless screw
- I - Cutting plates
- J - Lock rim
- K - Cutting blades
- L - Sausage accessory
- M - Kibbeh Accessory





### Safety advice and warnings

- Read these instructions carefully before assembling or switching on the appliance and keep them for future reference. Failure to follow and observe these instructions could lead to an accident.
- Clean all the parts of the product that will be in contact with food, as indicated in the cleaning section, before use.

### Working environment:

- The appliance must be used on a flat, stable surface.
- Ensure that the air vents (intake and outlet) do not become totally or partially covered by drapery, clothing etc. as this is a fire hazard.

### Electrical safety:

- Do not use the appliance if the cable or plug is damaged.
- Ensure that the voltage indicated on the rating label corresponds with the voltage supply of the wall socket before plugging the appliance in.
- The appliance's plug must fit into the wall socket properly. Do not alter the plug. Do not use plug adaptors.
- Do not use or store the appliance outdoors.
- Always ensure that the power cord is in a good working condition. Damaged or tangled cords increase the risk of electric shock.
- Do not touch the plug with wet hands.
- Switch off the appliance and disconnect from electricity supply before changing accessories or approaching parts that move during use.
- Do not operate this appliance with wet hands.
- This appliance is not intended for use by persons (including children) with reduced physical, sensory or mental capabilities, or lack of experience and knowledge, unless they have been given supervision or instruction concerning use of the appliance by a person responsible for their safety.

### Personal safety:

- Do not switch the appliance on if you are not going to use it immediately.
- Do not touch any of the appliance's moving parts while it is operating.
- Exercise caution after switching off the appliance as the blades will continue to rotate for a brief period.

### Use and care:

- Fully unroll the appliance's power cord before each use.
- Do not use the appliance if its accessories are

not properly fitted.

- Do not use the appliance if the on/off switch does not work.
- Do not apply any additional pressure on the appliance while it is in use.
- Do not force the appliance to process more food or process food quicker than it is capable of processing.
- Remove the plug from the wall socket when the appliance is not in use and before undertaking any cleaning task.
- Remove the plug from the wall socket before replacing any accessory.
- This appliance is for household use only, not professional or industrial use.
- This appliance is not a toy. Children should be supervised to ensure that they do not play with the appliance.
- This appliance is intended for adult use. Ensure that this product is not used by the disabled, children or people not familiar with its operation.
- This appliance should be stored out of reach of children and/or the disabled.
- Do not use the appliance for more than 8 minutes at any one time.
- Exercise caution during the assembly and disassembly of the cutting blades, as they are sharp and could cause serious injury.
- Any misuse or failure to follow the instructions for use renders the guarantee and the manufacturer's liability null and void.

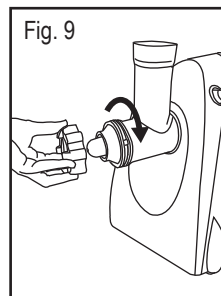
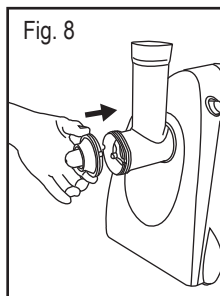
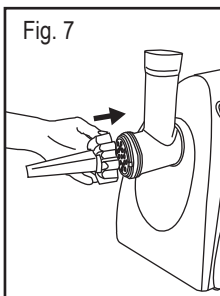
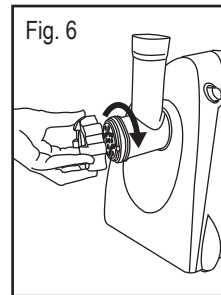
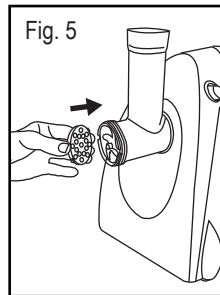
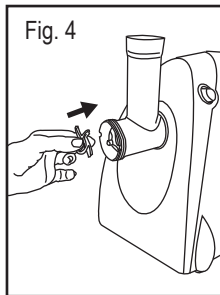
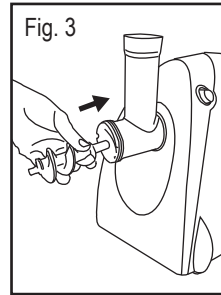
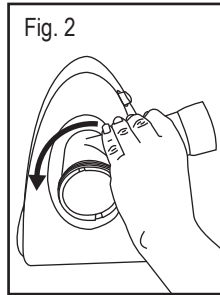
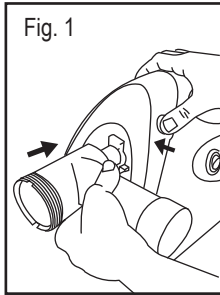
### Instructions for use

- Prepare the appliance with the accessory required according to the food to be prepared.
- Cut all foods into pieces (sinewless, boneless and fatless meat is recommended, approximate size: 20 mm x 20 mm x 60 mm) so that the food fits easily into the machine head opening.
- Insert the plug into the wall socket.
- Turn the appliance on using the on/off switch.
- Place food portions on the tray. Use the food pusher to feed the portions down the chute of the mincing head.

### Accessories:

#### Cutting plates (I)

- Cutting plates allow for meat to be minced coarser or finer depending on the size of the holes in the plate.
- Press & hold the lock button while inserting the mincing head (fig. 1). Then turn the mincing head anti-clockwise until the chute is vertical. Release the lock button to secure the mincing head in position (fig. 2).



- Insert the endless screw through the outlet mouth of the mincing head (fig. 3).
- Position the cutting blades on the endless screw with the cutting edge pointing towards the endless screw (fig. 4).
- Insert the required cutting plate onto the endless screw, fitting the bulges on the cutting plate in the notches of the outlet mouth edge of the mincing head (fig. 5).
- Screw the lock rim tightly onto the outlet mouth of the mincing head turning clock-wise to secure the endless screw, cutting blades and the cutting plate (fig. 6).
- Position the tray at the top of the mincing head.

#### Sausage accessory (L)

- Press & hold the lock button while inserting the mincing head (fig. 1). Then turn the mincing head anti-clockwise until the chute is vertical. Release the lock button to secure the mincing head in position (fig. 2).
- Insert the endless screw through the outlet mouth of the mincing head (fig. 3).
- Position the cutting blade on the endless screw with the cutting edge pointing towards the endless screw (fig. 4).
- Insert the cutting plate with the largest holes onto the endless screw, fitting the bulges on the cutting plate in the notches of the outlet mouth



edge of the mincing head (fig. 5).

- Insert the sausage accessory through the locking rim (fig. 7).
- Screw the lock rim tightly onto the outlet mouth of the mincing head, turning clockwise to secure the endless screw, cutting blades and the cutting plate (fig. 6).
- Position the tray at the top of the mincing head.

### Kibbeh accessory (M)

- Press & hold the lock button while inserting the mincing head (fig. 1). Then turn the mincing head anti-clockwise until the chute is vertical. Release the lock button to secure the mincing head in position (fig. 2).
- Insert the endless screw through the outlet mouth of the mincing head (fig. 3).
- Insert the Kibbeh accessory base onto the endless screw and position the other Kibbeh accessory on top. Fit the bulges of the Kibbeh base in the notches of the filling mouth (fig. 8).
- Screw on the lock rim, turning clock-wise to secure the Kibbeh accessory onto the endless screw (fig. 9).
- Position the tray at the top of the mincing head.

### Reverse Function:

- If food gets stuck, switch off the appliance. Press the I/ II knob and set to "II" position and ON/O/R switch to "R" position.
- The endless screw will rotate in the opposite direction and unclog the mincing head.
- If this doesn't work, switch off the unit and clean it.

### Once you have finished using the appliance:

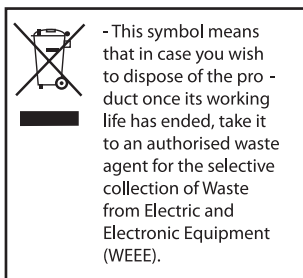
- Turn the appliance off, using the on/off switch.
- Remove the plug from the wall socket.
- Clean the appliance.

### Cleaning

- Clean the equipment with a damp cloth and a few drops of washing up liquid, and then dry.
- Do not use solvents, or products with an acid or base pH such as bleach, or abrasive products, for cleaning the appliance.
- Never submerge the appliance, power cord or plug in water or any other liquid or place under running water.
- During the cleaning process, take special care with the blades, as they are very sharp.
- The following components may be cleaned in a dishwasher: tray, mincing head, lock rim, endless screw and cutting plates.

### Anomalies and repair

- Take the appliance to an authorised technical support service center if any problems arise. Do not try to dismantle or repair without assistance, as this may be dangerous.
- If the plug has been damaged, it must be replaced and you should proceed as you would in the case of damage.



This appliance complies with Directive 2006/95/EC on Low Voltage and Directive 2004/108/EC on Electromagnetic Compatibility.



## creative housewares

27 Nourse Avenue Epping 2 Cape Town  
P.O. Box 975 Eppindust 7475 South Africa  
Tel: +27 21 534 8114 Fax: +27 21 534 8086  
Service Centre Share Call: 086 111 5006  
web: [www.creativehousewares.co.za](http://www.creativehousewares.co.za)

## Free Manuals Download Website

<http://myh66.com>

<http://usermanuals.us>

<http://www.somanuals.com>

<http://www.4manuals.cc>

<http://www.manual-lib.com>

<http://www.404manual.com>

<http://www.luxmanual.com>

<http://aubethermostatmanual.com>

Golf course search by state

<http://golfingnear.com>

Email search by domain

<http://emailbydomain.com>

Auto manuals search

<http://auto.somanuals.com>

TV manuals search

<http://tv.somanuals.com>