



mellerware®

E X E C U T I V E
P O L O V A C U U M C L E A N E R



Complies with
INTERNATIONAL
IEC60355
SAFETY SPECIFICATIONS

m
1800W (max)

2 YEAR
GUARANTEE

Model:
VAC1800

PLEASE READ ALL INSTRUCTIONS BEFORE USE

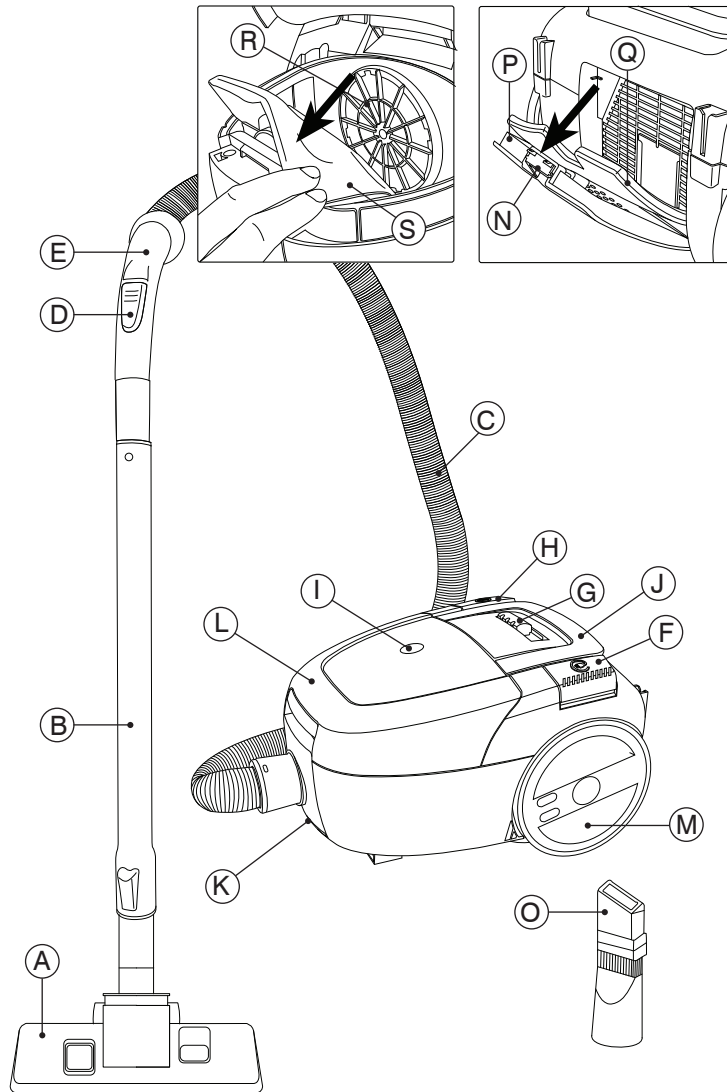
2 year guarantee





Dear customer,

Many thanks for purchasing a MELLERWARE product. Thanks to its technology, design and operation and the fact that it goes through strict quality controls - we feel sure you will be entirely satisfied.



Description:

A Floor tool

B Extension tube

C Hose

D Manual air regulator

E Handle

F Automatic cord rewind

G Speed variation knob

H On/Off switch

I Bag full indicator

J Upper handle

K Front transportation handle

L Bag compartment cover

M Wheels

N Air outlet cover clip

O 2-in-1 crevice tool & floor brush

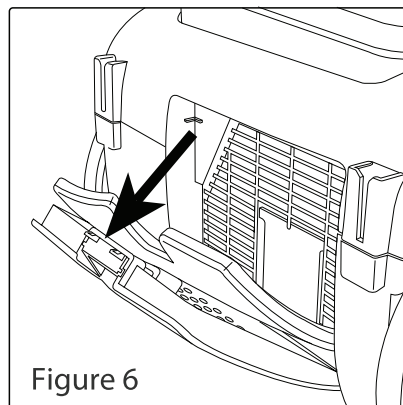
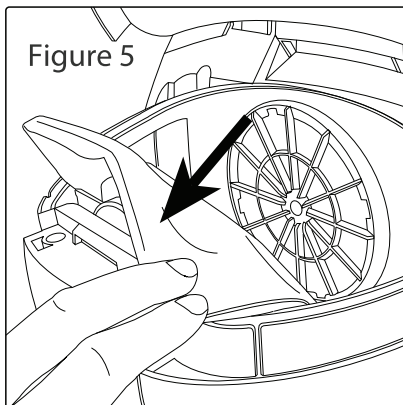
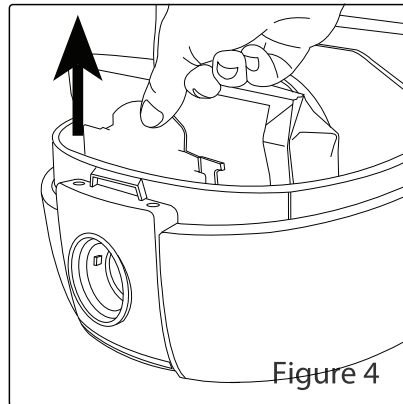
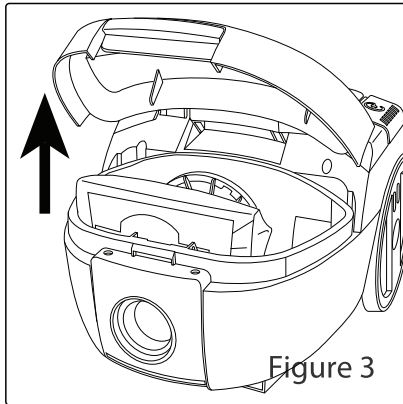
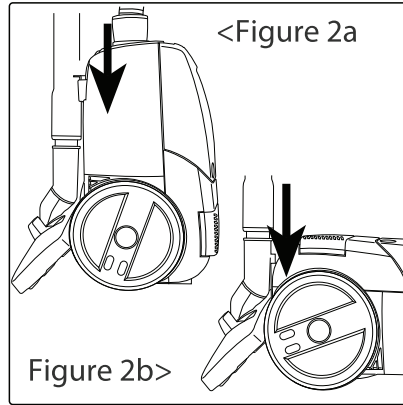
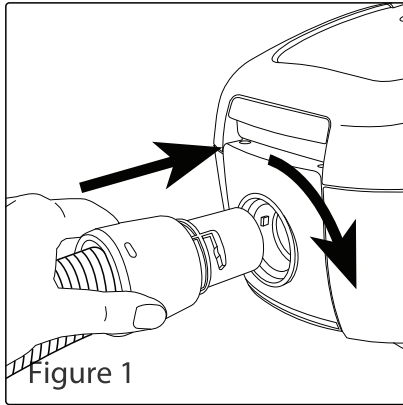
P Air outlet cover

Q Air outlet filter

R Air inlet filter

S Dust bag







Safety advice and cautions

- Read these instructions carefully before switching on the appliance and keep them for future reference.
- Failure to follow and observe these instructions could lead to an accident.

Electric safety

- Do not use the appliance if the cable or plug is damaged.
- Ensure that the voltage indicated on the nameplate matches the mains voltage before plugging in the appliance.
- Connect the appliance to a socket that can supply a minimum of 10 amps.
- Do not use or store the appliance outdoors.
- Do not leave the appliance out in the rain or exposed to moisture. If water gets into the appliance, this will increase the risk of electric shock.
- If any of the appliance's casing breaks, immediately disconnect the appliance from the mains to prevent the possibility of an electric shock.
- Do not force the electrical cord. Never use the electric cord to lift up, carry or unplug the appliance.
- Check the state of the electrical connection cable. Damaged or tangled cables increase the risk of electric shock.
- Do not touch the plug with wet hands.

Use and care:

- Do not use the appliance if the accessories or parts are not fastened together properly.
- Do not use the appliance to vacuum up water or any other type of liquid.
- Do not use the appliance if the on/ off switch does not work.
- Do not remove the appliance wheels.
- Do not exceed the appliance's working capacity.
- Disconnect the appliance from the mains when not in use, before cleaning, making any adjustment, or accessory change.
- This appliance is for household use only, not professional or industrial use.
- This appliance is not a toy. Children should be supervised to ensure that they do not play with the appliance.
- This appliance is intended for adult use. Ensure that this product is not used by the disabled, children or people unfamiliar to its handling.
- This appliance should be stored out of reach of children and/or the disabled.
- Make sure that the air inlet grill on the appliance is not blocked by dust, dirt or other foreign

objects.

- Check that the lid is closed properly before starting the appliance.
- Never vacuum hot or sharp objects (cigarette butts, ash, nails, etc.)
- Any misuse or failure to follow the instructions for use renders the guarantee and the manufacturer's liability null and void.

Instructions for use

Vacuuming function:

- To secure the hose to the air intake, insert hose & turn clockwise until hose "clicks" into place.
- To take off the vacuum hose, turn the hose anticlockwise and pull outwards. (Fig. 1).

Securing accessories to the appliance:

- The appliance is designed in such a manner that the following accessories may be attached to the unit: (use the combination that best meets your requirements)

Extension tube:

- Designed to provide access to surfaces which are out of reach and make floor cleaning comfortable, its length can be adjusted by using the adjustment control.

-Floor tool:

- Specially designed for cleaning floors (both rugs, carpets and hard floors), the tool has a retractable brush for greater efficiency on these floors. It is advisable to have the brush out for hard floors and the brush in for rugs and carpets.

2-in-1 Crevice tool & floor brush:

- specially designed for getting into cracks and difficult corners.

Use:

- Take the length of cable required out of the housing.
- Connect the appliance to the mains.
- Switch the appliance on using the on/off button.
- Choose the desired power.

Speed variation:

- The speed of the appliance can be regulated by using the speed regulator control. This function is very useful, as it makes it possible to adapt the power of the appliance to the





type of work that needs to be done.

Once you have finished using the appliance:

- Turn the appliance off using the on/off switch.
- Unplug the appliance from the mains.
- Retract the cable by pressing the cable rewind button and guide the cable into the appliance.

Carry handle/s:

- This appliance has a handle on the upper part of the body, which facilitates comfortable transportation.
- This appliance has a handle situated on the lower bottom front side so that it is easy and comfortable to carry.

Parking position:

- This appliance has two parking positions for comfortable and simple storage.
- To make use of the vertical parking put the appliance in a vertical position (so that the rear of the appliance is now leaning against the floor) secure the hook of the rigid tube to the hook which can be found on the lower part of the appliance (Fig. 2a).
- To use the horizontal parking position, fix the break pad hook to the hook situated on the rear side of the appliance. (Fig. 2b).

Safety trip switch:

- The appliance has a safety trip switch that protects the appliance from overheating.
- If the appliance turns itself off and does not switch itself on again, disconnect it from the mains supply, and wait for approximately 15 minutes before reconnecting. If the machine does not start again seek authorised technical assistance.

Cleaning

- Disconnect the appliance from the mains and allow it to cool before undertaking any cleaning task.
- Clean the device with a damp cloth that has been administered a couple of drops of detergent. Dry afterwards.
- Do not use solvents, or products with an acid or base pH such as bleach, or abrasive products, for cleaning the appliance.
- Do not submerge the appliance in water or any other liquid, or place it under a running tap.

Changing the dust bag:

- Change the dust bag when there is a noticeable reduction in the suction power of the appliance. (The dust bag does not necessarily have to be full to need changing; for example, if very fine dust has been vacuumed this can cover the pores in the bag and make it necessary to replace it)
- In any case, change the bag when the bag full indicator is completely red.
- Disconnect the hose from the vacuum cleaner's air intake.
- Open the bag compartment cover. (Fig 3).
- Remove the bag from the bag support. (Fig 4).
- Check the condition of the motor filter.
- Replace the bag with another one, fitting it to the bag support.
- Close the bag compartment cover; making sure it is shut properly.
- Connect the hose to the vacuum cleaner's air intake. (Fig 1)

Changing the filters:

Air inlet and outlet filters:

- Replacement is recommended at least once a year or every 100 hours of use.
- It is recommended that you change the air outlet filter at least once after every 100 hours of using the appliance.

To remove filters:

Air inlet filter:

- Open the lid of the bag compartment and remove the bag. (Fig 3).
- The air inlet filter can be found in the motor's turbine air entrance.
- Remove the filter by pulling the filter plate outwards, until the plate "unclips" (Fig.5)
- Change the filter.
- To replace the filter, push the plate towards the motor grill until the plate "clicks" into place.

Air outlet filter:

- Open the air outlet grill to access the filter (Fig 6).
- Remove the filter from its housing.
- Change the filter.
- To replace the filter, insert the removable grill into the designated area and press the clip downwards and push the top of the grill towards the unit.

Accessories

- Accessories (such as filters, etc.) can be purchased from distributors and authorised





establishments.

- Supplies can be purchased in specialised shops.

Anomalies and repair

- Take the appliance to an authorised technical support service if problems arise. Do not try to dismantle or repair without assistance, as this may be dangerous.
- If the connection to the mains has been damaged, it must be replaced and you should proceed as you would in the case of damage.

Ecology and recyclability of the product

- The materials of which the packaging of this appliance consists are included in a collection, classification and recycling system. Should you wish to dispose of them, use the appropriate public containers for each type of material.
- The product does not contain concentrations of substances that could be considered harmful to the environment.

Characteristics:

- Maximum power absorbed: 1800W max
- Acoustic pressure level @ max < 82 dB(A)

Note: By virtue of the conditions of fabrication of this product, the maximum absorbed power can differ from that specified.

This appliance complies with Directive 2006/95/EC on Low Voltage and Directive 2004/108/EC on Electromagnetic Compatibility.





creative housewares

27 Nourse Avenue Epping 2 Cape Town
P.O. Box 975 Eppindust 7475 South Africa
Tel: +27 21 534 8114 Fax: +27 21 534 8086
Service Centre Share Call: 086 111 5006
web: www.creativehousewares.co.za



Free Manuals Download Website

<http://myh66.com>

<http://usermanuals.us>

<http://www.somanuals.com>

<http://www.4manuals.cc>

<http://www.manual-lib.com>

<http://www.404manual.com>

<http://www.luxmanual.com>

<http://aubethermostatmanual.com>

Golf course search by state

<http://golfingnear.com>

Email search by domain

<http://emailbydomain.com>

Auto manuals search

<http://auto.somanuals.com>

TV manuals search

<http://tv.somanuals.com>