



MIL-S800 User's Guide

8 port 10/100BASE-TX Switch



Regulatory Approval

- FCC Class A
- UL 1950
- CSA C22.2 No. 950
- EN60950
- CE
- EN55022 Class B
- EN55024

Canadian EMI Notice

This Class A digital apparatus meets all the requirements of the Canadian Interference-Causing Equipment Regulations.

Cet appareil numerique de la classe A respecte toutes les exigences du Reglement sur le materiel brouilleur du Canada.

European Notice

Products with the CE Marking comply with both the EMC Directive (89/336/EEC) and the Low Voltage Directive (73/23/EEC) issued by the Commission of the European Community. Compliance with these directives imply conformity to the following European Norms:

- EN55022 (CISPR 22) - Radio Frequency Interference
- EN61000-X - Electromagnetic Immunity
- EN60950 (IEC950) - Product Safety

Five-Year Limited Warranty

MiLAN Technology warrants to the original consumer or purchaser that each of its products, and all components thereof, will be free from defects in material and/or workmanship for a period of five years from the original factory shipment date. Any warranty hereunder is extended to the original consumer or purchaser and is not assignable.

MiLAN Technology makes no express or implied warranties including, but not limited to, any implied warranty of merchantability or fitness for a particular purpose, except as expressly set forth in this warranty. In no event shall MiLAN Technology be liable for incidental or consequential damages, costs, or expenses arising out of or in connection with the performance of the product delivered hereunder. MiLAN Technology will in no case cover damages arising out of the product being used in a negligent fashion or manner.

Trademarks

The MiLAN logo and MiLAN Technology trademarks are registered trademarks of MiLAN Technology in the United States and/or other countries.

To Contact MiLAN Technology

For prompt response when calling for service information, have the following information ready:

- Product serial number and revision
- Date of purchase
- Vendor or place of purchase

You can reach MiLAN Technology technical support at:

E-mail: support@milan.com
Telephone: +1.408.744.2751

Fax: +1.408.744.2771
MiLAN Technology
1329 Moffett Park Drive
Sunnyvale, CA 94089
United States of America

Telephone: +1.408.744.2775
Fax: +1.408.744.2793

<http://www.milan.com>
info @ milan.com
© Copyright 2003 MiLAN Technology

P/N: 90000377_F

Table of Contents

Chapter 1. Introduction	Pg 1
1-1 General Description.....	Pg. 1
1-2 Key Features.....	Pg. 1
1-3 Package Contents.....	Pg. 2
1-4 Hardware Description.....	Pg. 3
Chapter 2. Hardware Installation	Pg 4
2-1 Quick Installation.....	Pg. 4
2-2 LED Descriptions.....	Pg. 5
Chapter 3. Network Application	Pg 6
3-1 Stand Alone.....	Pg. 6
3-2 Uplink Multiple Hubs.....	Pg. 6
Chapter 4. Trouble Shooting	Pg 7
Chapter 5. Product Specifications	Pg 8
5-1 General Specification.....	Pg. 8
5-2 Performance Specification	Pg. 8
5-3 Physical & Environmental Specification.....	Pg. 8

Chapter 1 Introduction

1-1 General Description

The MIL-S800 switch provides eight auto-sensing 10/100Mbps RJ45 Ethernet ports. This high performance, low cost, wire speed desktop switch is ideal for any network where 8 ports are needed, for a solution to an enterprise need or for a home network. The MIL-S800 can be mounted on the wall with keyholes in the chassis or magnetically attached to any metal surface.

1-2 Key Features

- Compliant with IEEE 802.3, 802.3u & 802.3x standards
- 8 Auto-sensing RJ-45 ports for 10BASE-T or 100 BASE-TX connections
- Embedded 2K entry MAC address table
- 512KB memory buffer sharing
- Store-and-Forward operation support
- Full duplex and half duplex flow control
- Plug-and-Play configuration auto addresses learning
- LED indicators for power, link speed 100Mbps, link and activity, full duplex and collision
- Space-saving compact size
- Wall or desktop mountable
- Magnets provide installation on any metal surface
- Auto MDI/MDIX

1-3 Package Contents

Your package contents should include the following parts:

- One 8-port Auto-sensing switching Hub
- One DC power adapter
- This User's Guide
- Four rubber feet with adhesive pads
- Two magnets
- Warranty card



Figure 1. Package contents

1-4 Hardware Description

The Front Panel

The front panel contains power and LED Indicators.



Figure 2. Front panel view of the MIL-S800

Front panel LED Indicators

Per Device	Power
Per Port	100M (Link on 100Mbps)
	LNK/ACT (Link/Activity)
	FDX/COL (Full Duplex/Collision)

For LED details, please refer to Chapter 2, LED Descriptions.

The Rear Panel

The rear panel of the MIL-S800 consists of a DC power connector and 8 auto-sensing ports.



Figure 3. Rear panel view of the MIL-S800

- Eight Auto-sensing RJ-45 ports for 10BASE-T or 100 BASE-TX connections.
- Auto MDI/MDIX: Detects the straight cable connection, NIC or cascade to a hub or switch, without changing the cable.
- DC Power Connector.

Chapter 2 Hardware Installation

2-1 Quick Installation

- The MIL-S800 should be placed in a well-ventilated room with proper temperature and humidity.
- Do not place the unit near water.
- The maximum distance between the port to the standard network interface is 100 meters.
- For desktop installation, ensure the surface is clean, smooth, level and sturdy. Apply self-adhesive rubber feet to the bottom of the switch near the corners.
- For wall installation, place two screws securely into the wall. Slide the cross recesses on the bottom of the MIL-S800 onto the screws.
- For mounting the MIL-S800 on a metal surface, install magnets as shown in instructions and apply to surface.
- Visually check that the power cord is not damaged. Plug the female end of the cord into the rear of the MIL-S800 and the male end (power converter) into a power outlet.
- Do not plug a phone jack connector into any RJ-45 port. This may cause damage. Use only twisted-pair cables with RJ-45 connectors that conform to FCC standards.

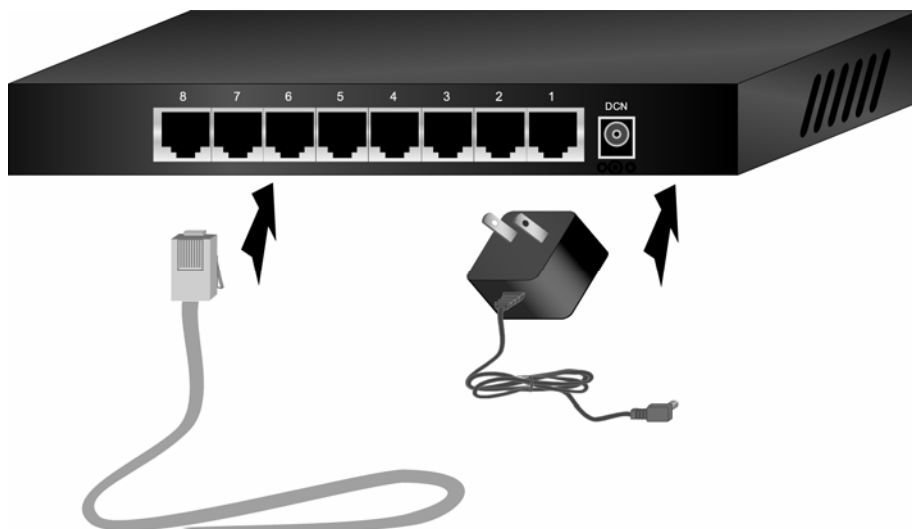


Figure 4. Installation of switch

2-2 LED Descriptions

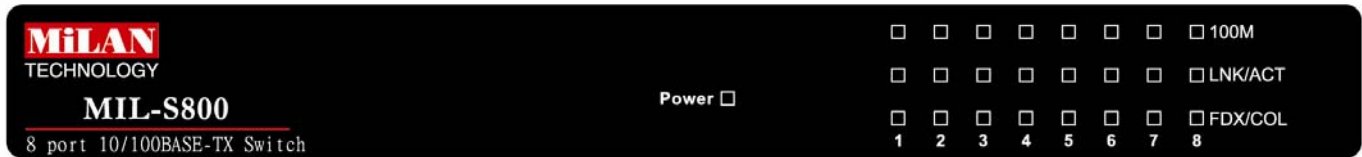


Figure 5. Front panel view of LED indicators

The following table lists the LEDs and their function.

LED	STATUS	COLOR	INDICATION
Power	On	Green	The switch is powered
100M	On	Green	The port is operating at 100Mbps
	Off		The port is operating at 10Mbps
LNK/ACT	On	Green	The port is successfully connected to a device
	Blinking	Green	The port is receiving or transmitting data
	Off		No operating device is connected
FDX/COL	On	Yellow	The port is in full duplex mode
	Blinking	Yellow	A packet collision has occurred on this port
	Off		The port is operating in half duplex mode

Chapter 3 Network Application

3-1 Stand Alone

The application of a simple standalone switch is illustrated below. The maximum distance between the switch and the workstation is 100 meters.

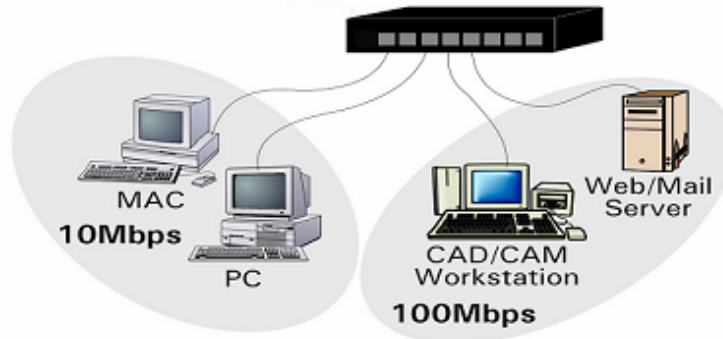


Figure 6. The switch as a backbone for a small 10/100BASE-TX network

3-2 Network

You can cascade the MIL-S800 to another hub or a switch without using a crossover cable.

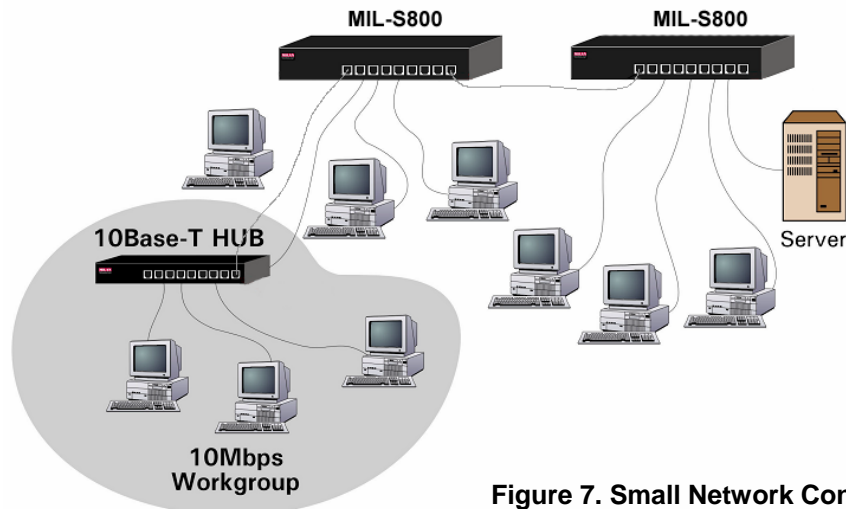


Figure 7. Small Network Configuration

Chapter 4 Troubleshooting

- Power

If the power indicator is not on after the power cord is plugged in, check the power outlet or power cord. If you lose power after the switch has been operating for some time, check for loose power connections, power losses or surges at the power outlet. Disconnect and reconnect the power. If the problem persists, contact MiLAN Technical Support.

- Cabling

Verify that the cabling type is correct. Be sure all cable connectors are securely seated in the required ports. Use standard unshielded twisted-pair (UTP), Category 3, 4, or 5 cables. Use only Category 5 when there is a Fast Ethernet connection. Make sure the distance between the MIL-S800 and the workstation, is less than 100 meters.

Chapter 5 Product Specification

5-1 General Specification

Standard Compliance	IEEE 802.3 10Base-T Ethernet IEEE 802.3u 100Base-TX Fast Ethernet
Number of Ports	8 10/100Mbps Auto-sensing RJ-45 ports
Data Transfer Rate	Ethernet :10Mbps(half duplex) 20Mbps(full duplex) Fast Ethernet : 100Mbps(half duplex) 200Mbps(full duplex)
Network Cables	Unshielded twisted-pair cable
LED Indicators	
Per Device Per Port	Power LNK/ACT, 100M, FDX/COL

5-2 Performance Specification

Transmission Method	Store and forward
MAC address table	2 K entry MAC address table
Maximum Forwarding Rate(64byte packets)	14,880 pps /10 BASE-T 148,800 pps /100BASE-TX
Maximum Filtering Rate(64byte packets)	14,880 pps /10BASE-T 148,800 pps/100BASE-TX
Duplex mode	Supports both half and full duplex mode

5-3 Physical & Environmental Specification

Power Supply	External power adapter, DC 9V, 700mA 4.2 Watt power consumption
Dimensions	6.5" (165mm) L x 4.0" (100mm) W x 1.0" (25mm) H
Temperature	Operating temperature: 0C to 45C (32F to113F) Storage temperature: -30C to 60C (-22F to 140F)
Humidity	10% to 90% (non-condensing)
EMI	FCC Class B, CE mark



90000377_F

Free Manuals Download Website

<http://myh66.com>

<http://usermanuals.us>

<http://www.somanuals.com>

<http://www.4manuals.cc>

<http://www.manual-lib.com>

<http://www.404manual.com>

<http://www.luxmanual.com>

<http://aubethermostatmanual.com>

Golf course search by state

<http://golfingnear.com>

Email search by domain

<http://emailbydomain.com>

Auto manuals search

<http://auto.somanuals.com>

TV manuals search

<http://tv.somanuals.com>