



# SERVICE PARTS LIST

BUL. 54-08-1072

1/2" ELECTRIC DRILL

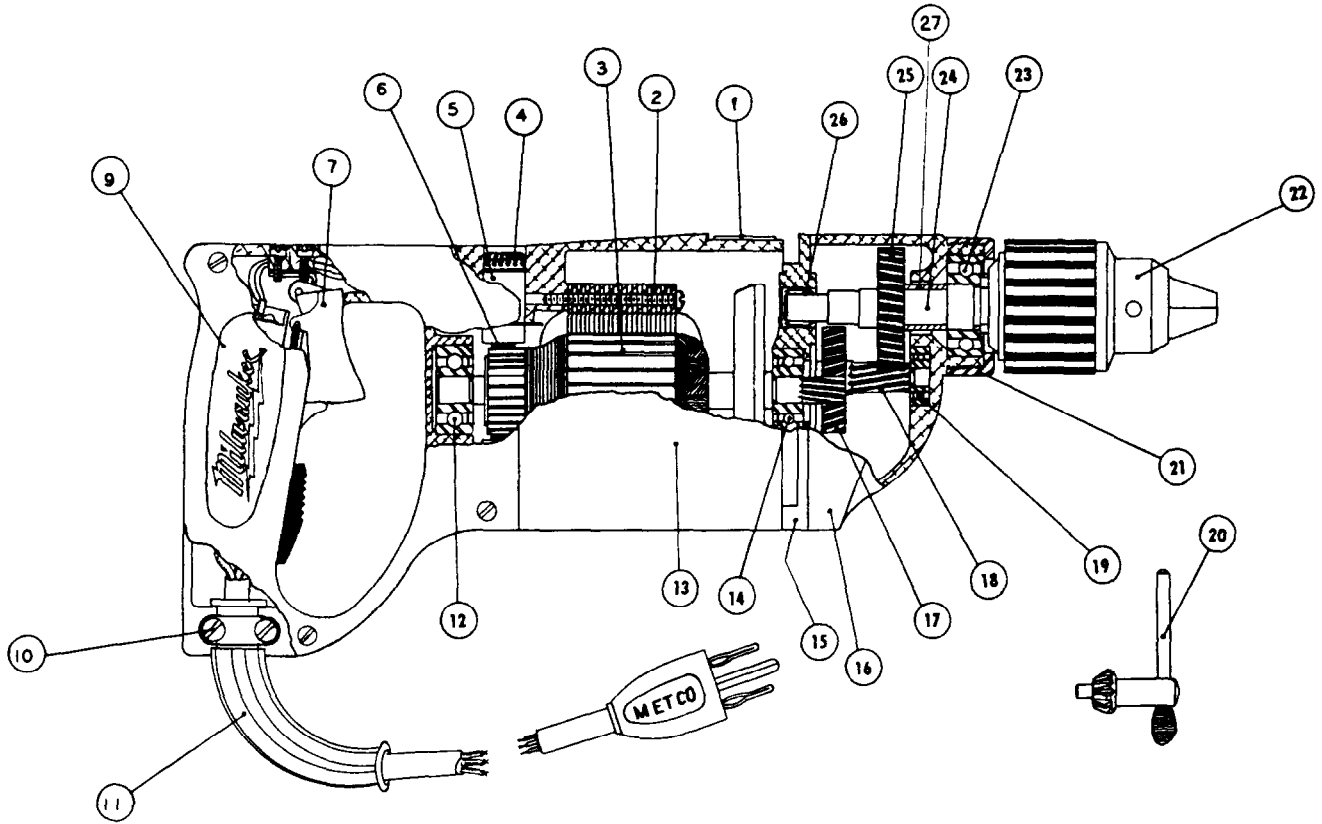
REVISED BUL 6126-3 DATE Feb. '68

Catalog No. 1000-1

Starting Serial No. 126-5361

WIRING INSTR.

Both Model and Serial No. must be furnished to obtain correct parts.



230 V Motor  
16-46-1190 Armature  
18-46-1141 Field

CORRECTS & SUPERSEDES  
SERVICE BULLETIN 6126-3  
DATED 6/30/65

### ILLUSTRATED PARTS

FIG.	PART NO.	DESCRIPTION OF PART	NO.REQ.	FIG.	PART NO.	DESCRIPTION OF PART	NO.REQ.
1	12-98-0800	Name Plate		15	28-28-0581	Diaphragm Assy.	
2	18-42-1141	Field Assembly		16	28-14-0681	Gear Case	
3	16-42-1210	Armature Assembly		17	32-40-1241	Intermediate Gear	
4	23-44-0060	Brush Retaining Screw	(2)	18	36-66-2001	Intermediate Pinion	
5	22-22-0080	Brush Holder Assembly	(2)	19	02-04-0640	Inter. Shaft Ball Bearing	
6	22-18-0100	Carbon Brush Assembly	(2)	20	48-66-3280	Chuck Key	
7	23-66-0485	Switch		21	42-52-0071	Bearing Cap	
9	28-20-3601	Handle Cover		22	48-66-1360	1/2" Chuck	
10	28-17-0400	Cord Clamp Strap		23	02-04-1560	Ball Bearing	
11	22-64-0350	Cord Set		24	38-50-3651	Spindle	
12	02-04-0970	Ball Bearing (Comm. End)		25	32-75-1601	Spindle Gear	
13	28-50-4488	Motor Housing		26	02-50-2110	Needle Bearing	
14	02-04-0940	Ball Bearing (Pinion End)		27	45-36-0210	Spindle Gear Spacer	

### MISCELLANEOUS PARTS NOT SHOWN

PART NO.	DESCRIPTION OF PART	NO.REQ.	PART NO.	DESCRIPTION OF PART	NO.REQ.
02-50-1640	Needle Bearing		06-81-6150	8-32x1/2 Fil. Hd. Sems Cord Clamp Strap Scrs.	(2)
43-62-0160	Handle		06-81-8625	6-32x1/4 Rd. Hd. Sems Ground Screw (Brass)	
44-90-0130	Handle Ring		06-81-6350	8-32x1 Fil. Hd. Sems Gear Case Screws	
06-81-8400	4-40x1/4 Rd. Hd. Name Pl. Scrs. Sems	(2)	06-81-6650	8-32x1 1/4 Fil. Hd. Sems Gear Case Screws	(2)
06-81-5790	6-32x1/4 Fil. Hd. Sw. Mtg. Sems	(2)	06-81-6600	8-32 x 1/4 Fil. Hd. Sems Field Screws	(2)
23-86-0110	Brush Holder Insul. Washer	(2)	06-83-2650	1/4-20x3/8 Hd'less Brush Holder Set Screws	(2)
06-42-1600	Woodruff Key		06-81-3700	8-32x7/8 Oval Hd. Handle Cover Screws	(4)
48-03-0010	Attach. Plug Adaptor		06-75-3150	1/4-20x1 Left Hd. Allen Hd. Cap Sc. (Chuck Ret. Sc.)	
			06-42-0800	Woodruff Key	
			*23-16-0340	Switch Insulator	

**MILWAUKEE ELECTRIC TOOL CORP.**

13135 West Lisbon Road • Brookfield, Wisconsin 53005

## Free Manuals Download Website

<http://myh66.com>

<http://usermanuals.us>

<http://www.somanuals.com>

<http://www.4manuals.cc>

<http://www.manual-lib.com>

<http://www.404manual.com>

<http://www.luxmanual.com>

<http://aubethermostatmanual.com>

Golf course search by state

<http://golfingnear.com>

Email search by domain

<http://emailbydomain.com>

Auto manuals search

<http://auto.somanuals.com>

TV manuals search

<http://tv.somanuals.com>