

Ceiling mount bracket for high ceilings

Description

This ceiling mount bracket is to be used when mounting Panasonic projectors to the ceiling.

Specifications

Vertical correction angle:	+5°, -17°
Horizontal slant correction angle:	±2.5°
Horizontal turn correction angle:	±1.2°
Dimensions (W x H x D):	344 x 340-420 x 345 mm (13-17/32" x 13-3/8"-16-17/32" x 13-19/32")
Weight:	9.7 kg (21.4 lbs)

Weights and dimensions shown are approximate. Specifications subject to change without notice.

Parts

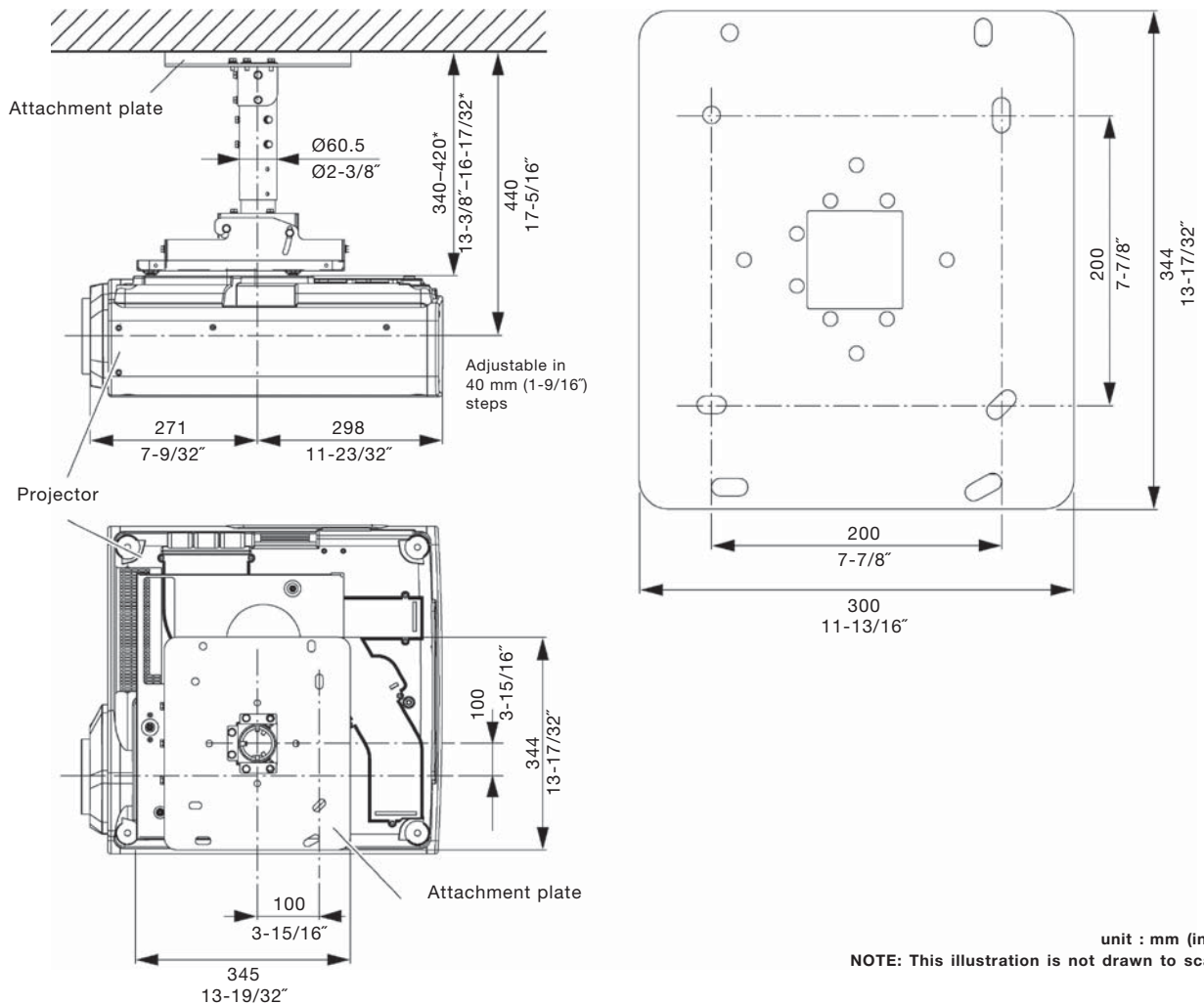
Attachment plate	1	Washer-fitted hexagonal bolts (M6 x 80)	2
Projector mount bracket	1	Washer-fitted screws for safety fitting (M4 x 8)	4
Adjuster pole A	1	Washer-fitted hexagonal bolts (M6 x 12)	35
Adjuster pole B	1	Washer (M6)	2
Angle adjuster	1	Hexagonal nuts (M6)	2
Pole support bracket 1	1	Wire rope (SU304, Ø1.5 mm, 2 m)	2
Pole support bracket 2	1	Wire clip	4
Pole fixer	1	Clamp tube	4
Safety fitting	2	Sealing packing	1

Caution:

Mounting should be done by a qualified technician. Make sure that the mounting (ceiling) area has sufficient strength. Read the enclosed mounting instructions thoroughly before starting.

Dimensions

Illustration shows the ET-PKD77H attached to the projector.



Free Manuals Download Website

<http://myh66.com>

<http://usermanuals.us>

<http://www.somanuals.com>

<http://www.4manuals.cc>

<http://www.manual-lib.com>

<http://www.404manual.com>

<http://www.luxmanual.com>

<http://aubethermostatmanual.com>

Golf course search by state

<http://golfingnear.com>

Email search by domain

<http://emailbydomain.com>

Auto manuals search

<http://auto.somanuals.com>

TV manuals search

<http://tv.somanuals.com>