

Panasonic®

Installation Manual

Key Detector

Model No. **KX-TGA20**



Thank you for purchasing a Panasonic product.

Please read this installation manual before using the unit and save it for future reference.

This unit is an accessory for use with a Panasonic Digital Cordless Phone.

For more details, visit our Web site:

<http://panasonic.net/pcc/products/telephone/p/tga20/>

For U.S.A. users

For assistance, visit our Web site: <http://www.panasonic.com/help>

for customers in the U.S.A. or Puerto Rico.

For Canada users

For assistance, please call **1-800-561-5505** or visit us at www.panasonic.ca

Supplied accessory (Replacement accessory)

Battery (CR2032): 1 pc

Battery type: CR coin cell lithium battery

Introduction

By registering the key detector to a Panasonic Digital Cordless Phone and attaching it to an easy-to-lose item in advance, you can locate and find the misplaced item to which the key detector is attached.

Important:

- Up to 4 key detectors can be registered to a Panasonic Digital Cordless Phone.
- The key detector is not water-resistant. Exposing it to rain, water, or high humidity may cause it to malfunction.



Note:

- Even if the handset is out of the range of the base unit, you can use the handset to search for the key detector. While searching, the handset cannot receive calls.
- If a call is received while you are searching for the key detector with the handset, that handset does not ring. If you find that a call is being received on the base unit or another handset, you can stop searching and answer the call by using that handset.
- If the handset is placed on the base unit for the power back-up feature, the key detector function does not work.

Registering a key detector to the unit

Important:

- **For key detector supplied users:** The supplied key detector has been pre-registered to the unit.
- Do not install the battery until you activate the key detector registration using the handset.
- After installing the battery in step 2, the registration mode will end within 30 seconds.

1 Handset:

For key detector 1: **[MENU]#6571**

For key detector 2: **[MENU]#6572** *1

For key detector 3: **[MENU]#6573** *1

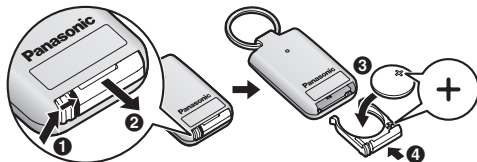
For key detector 4: **[MENU]#6574** *1

*1 If you have 2 or more key detectors.

2 Key detector:

With the tab pushed to the right (1), pull out the battery holder (2). Insert the battery with (+) facing up (3), then close the battery holder (4).

- Confirm that the battery is set correctly (+, -).
- The key detector will go into the registration mode automatically and the registration tones will sound.



3 Wait until a long beep sounds.

- After the key detector is registered, the detector number is displayed.

4 Handset: [OFF]

If the registration tones do not sound or the registration fails, you need to remove the battery from the key detector once to make the key detector available for registration again. Leave the battery out of the key detector for **over 2 minutes**, and then repeat from step 1.

Installation

Changing the key detector name

1 Handset:

For key detector 1: **[MENU]#6561** *1

For key detector 2: **[MENU]#6562** *1

For key detector 3: **[MENU]#6563** *1

For key detector 4: **[MENU]#6564** *1

*1 If you have 2 or more key detectors.

2 Enter the desired name (10 characters max.).

3 **[SAVE]** → **[OFF]**

Attaching the key detector to an easy-to-lose item

You can attach the key detector to items such as a car key or house key, etc.



Locating and finding a mislaid item

You can locate and find the mislaid item to which the key detector is attached using the handset.

1 Handset: **[MENU]#6555**

2 **[↕]**: "Search" → **[SELECT]**

3 **[↕]**: Select the desired key detector. → **[SELECT]**

- When the handset searches for the key detector, the handset emits the detection beeps and displays the signal strength (5 levels) and level value (1 – 100), and then the key detector emits responding beeps. As you point the handset in the right direction and then move closer to the item:
 - **Handset:** the frequency of the detection beeps will increase and a higher signal strength and level value will be displayed.
 - **Key detector:** the responding beeps are emitted during searching.
- The search is stopped after 3 minutes. To continue searching, repeat from step 3.
- While searching, you can turn off the handset detection beeps by pressing **[MUTE]**.

4 To stop searching, press **[OFF]**.

Note:

- Only one handset can search for a key detector. Other handsets cannot search at the same time.
- The volume of the detection beeps and responding beeps cannot be changed.

Range guidelines

- The range of the handset and key detector under the best conditions is about 50 m (160 feet) indoors and about 200 m (650 feet) outdoors. Please note this range may be shorter when the key detector is near concrete barriers, etc.

Operating tips

- Place the key detector away from the handset and practice locating it a few times to get a feel for how it works.
- If you cannot figure out which room of your house the key detector was left in, first point the handset upwards to search higher floors and then point the handset downwards to search lower floors in order to check the search level. Then, start your search from the room which shows the highest search level with the doors closed.
- When the level value reaches 70 – 90, we recommend you turn off the handset detection beeps by pressing **[MUTE]** and listen for the responding beeps from the key detector.
- When you search for the key detector, we recommend that you:
 - turn off electronic appliances such as TVs, radios, washing machines, and cleaners and search in a quiet environment.
 - refrain from using other wireless appliances.
- If you are close to a wall and getting a strong signal, check the room next door.
- If error messages are displayed, try moving to a different area.

Checking the battery

Important:

- Place the key detector near the handset when checking the battery of the key detector.

- 1 Handset: [MENU]# [6] [5] [5]**
- 2 [↕]: “Battery check” → [SELECT]**
- 3 [↕]: Select the desired key detector. → [SELECT]**
 - **If the battery is good**, the key detector emits beeps until the handset displays “OK”.
 - **If the battery is dead**, the handset displays “Battery dead” and the key detector does not sound. It is time to replace the battery.
- 4 [OFF]**

Installation

Note:

- “Battery dead” may be displayed when there is radio interference or the key detector is out of range of the handset.

Replacing the battery

CR coin cell lithium battery performance (supplied battery)	6 months max.* ¹
---	-----------------------------

*¹ Actual battery performance depends on usage and ambient environment.

Note:

- We recommend you check the battery once a month and replace the battery regularly so that you can use the key detector anytime.
- After installing the replacement battery, the key detector emits a registration tone for 30 seconds. Wait until the tone stops. You do not need to register the key detector to the unit again.

Deregistering a key detector

1 Handset:

For key detector 1: **[MENU]#6581**

For key detector 2: **[MENU]#6582** *¹

For key detector 3: **[MENU]#6583** *¹

For key detector 4: **[MENU]#6584** *¹

*¹ If you have 2 or more key detectors.

2 **[↵]**: “Yes” → **[SELECT]** → **[OFF]**

Troubleshooting

Problem	Cause/solution
The desired key detector does not work. or I cannot locate and find the key detector.	<ul style="list-style-type: none">● Make sure the battery is installed correctly (page 3).● Checking the battery (page 5).● The battery is dead. It is time to replace the battery.● The key detector is out of range. Check the range guidelines (page 5).

Liquid damage

Problem	Cause/solution
Liquid or other form of moisture has entered the key detector.	<ul style="list-style-type: none">● Remove the battery from the key detector and leave to dry for at least 3 days. After the key detector is completely dry, insert the battery. If the key detector does not work properly, contact an authorized service center.

Caution:

- To avoid permanent damage, do not use a microwave oven to speed up the drying process.

For your safety

To prevent severe injury and loss of life/property, read this section carefully before using the product to ensure proper and safe operation of your product.

WARNING

CR coin cell lithium battery

- The battery poses a choking hazard. Keep it out of reach of children. If the battery is accidentally swallowed, consult a doctor immediately.
- Do not recharge, disassemble, remodel, heat or throw it into fire.
- Do not touch the terminals (\oplus and \ominus) with metal objects.
- Risk of explosion if battery is replaced by an incorrect type. Dispose of used battery according to local regulations.
- If any electrolyte should come into contact with your hands or clothes, wash it off thoroughly with water.
- If any electrolyte should come into contact with your eyes, never rub your eyes. Rinse your eyes thoroughly with water, and then consult a doctor.

CAUTION

CR coin cell lithium battery

- Use only the battery specified.
- Insert the battery correctly.
- Do not leave the battery in an automobile exposed to direct sunlight for a long period of time with the doors and windows closed.
- Remove the battery if you do not use the product for a long period of time. Keep it in a cool, dark area.

Installation

- Do not replace a battery with wet hands.

For U.S.A. users

CR Coin Cell Lithium Battery Information:

This product contains a CR Coin Cell Lithium Battery which contains

Perchlorate Material - special handling may apply.

See <http://www.dtsc.ca.gov/hazardouswaste/perchlorate>

FCC and other information (for U.S.A. users)

This device complies with Part 15 of the FCC Rules. Operation is subject to the following two conditions:

(1) This device may not cause harmful interference, and (2) this device must accept any interference received, including interference that may cause undesired operation.

Caution:

Any changes or modifications not expressly approved by the party responsible for compliance could void the user's authority to operate this device.

Note:

This equipment has been tested and found to comply with the limits for a Class B digital device, pursuant to Part 15 of the FCC Rules. These limits are designed to provide reasonable protection against harmful interference in a residential installation. This equipment generates, uses, and can radiate radio frequency energy and, if not installed and used in accordance with the instructions, may cause harmful interference to radio communications. However, there is no guarantee that interference will not occur in a particular installation. If this equipment does cause harmful interference to radio or television reception, which can be determined by turning the equipment off and on, the user is encouraged to try to correct the interference by one or more of the following measures:

- Reorient or relocate the receiving antenna.
- Increase the separation between the equipment and receiver.
- Connect the equipment into an outlet on a circuit different from that to which the receiver is connected.
- Consult the dealer or an experienced radio/TV technician for help.

RF Exposure Warning:

- This Key Detector complies with FCC radiation exposure limits set forth for an uncontrolled environment and portable operation, which does not require any minimum spacing be provided between antenna and person's body (excluding extremities of hands, wrist and feet) during wireless mode of operation.

Notice:

- FCC ID can be found on the surface of the unit.

Industry Canada Notices (for Canada users)

NOTICE:

Operation is subject to the following two conditions: (1) this device may not cause interference, and (2) this device must accept any interference, including interference that may cause undesired operation of the device.

RF Exposure Warning:

- This Key Detector complies with IC radiation exposure limits set forth for an uncontrolled environment and portable operation, which does not require any minimum spacing be provided between antenna and person's body (excluding extremities of hands, wrist and feet) during wireless mode of operation.

Other information

Notice:

- この製品は、日本国外での使用を目的として設計されており、日本国内での使用は法律違反となります。従って、当社では日本国内においては原則として修理などのサービスは致しかねます。

Specifications

- **Standard:** DECT 6.0 (Digital Enhanced Cordless Telecommunications 6.0)
- **Frequency range:** 1.92 GHz to 1.93 GHz
- **RF transmission power:** 115 mW (max.)
- **Power source:** CR2032 Lithium battery
- **Power consumption:**
Standby: Approx. 0.2 mW, Maximum: Approx. 40 mW
- **Operating conditions:**
0 °C – 40 °C (32 °F – 104 °F), 20 % – 80 % relative air humidity (dry)

Note:

- Design and specifications are subject to change without notice.
- The illustrations in these instructions may vary slightly from the actual product.
- Do not use or place the key detector in areas where there are high temperatures, such as near fire or heater, areas exposed to direct sunlight, or inside a car.

Customer services (for U.S.A. users)

Customer Services Directory (United States and Puerto Rico)

Obtain Product Information and Operating Assistance; locate your nearest Dealer or Service Center; purchase Parts and Accessories; or make Customer Service and Literature requests by visiting our Web Site at:

[**http://www.panasonic.com/help**](http://www.panasonic.com/help)

or, contact us via the web at:

[**http://www.panasonic.com/contactinfo**](http://www.panasonic.com/contactinfo)

You may also contact us directly at: 1-800-211-PANA (1-800-211-7262),
Monday - Friday 9 am to 9 pm; Saturday - Sunday 10 am to 7 pm, EST.

TTY users (hearing or speech impaired users) can call 1-877-833-8855.

Accessory Purchases (United States and Puerto Rico)

Purchase Parts, Accessories and Instruction Books online for all Panasonic Products by visiting our Web Site at:

[**http://www.pstc.panasonic.com**](http://www.pstc.panasonic.com)

or, send your request by E-mail to:

[**npcparts@us.panasonic.com**](mailto:npcparts@us.panasonic.com)

You may also contact us directly at: 1-800-332-5368 (Phone)
1-800-237-9080 (Fax Only)

(Monday - Friday 9 am to 9 pm, EST.)

Panasonic Service and Technology Company
20421 84th Avenue South, Kent WA 98032

(We Accept Visa, MasterCard, Discover Card, American Express, and Personal Checks.)

TTY users (hearing or speech impaired users) can call 1-866-605-1277.

Warranty (For United States and Puerto Rico) (for U.S.A. users)

PANASONIC CORPORATION OF NORTH AMERICA
One Panasonic Way, Secaucus, New Jersey 07094

Panasonic Telephone Products Limited Warranty

Limited Warranty Coverage

If your product does not work properly because of a defect in materials or workmanship, Panasonic Corporation of North America (referred to as "the warrantor") will, for the length of the period indicated on the chart below, which starts with the date of original purchase ("Limited Warranty period"), at its option either (a) repair your product with new or refurbished parts, or (b) replace it with a new or a refurbished product. The decision to repair or replace will be made by the warrantor.

Parts	Labor
One (1) Year	One (1) Year

During the "Labor" Limited Warranty period there will be no charge for labor. During the "Parts" Limited Warranty period, there will be no charge for parts. You must mail-in your product prepaid during the Limited Warranty period. This Limited Warranty excludes both parts and labor for batteries, antennas, and cosmetic parts (cabinet). This Limited Warranty only applies to products purchased and serviced in the United States or Puerto Rico. This Limited Warranty is extended only to the original purchaser and only covers products purchased as new.

Ship-In Service

For assistance in the continental United States and Puerto Rico in obtaining repairs please ship the product prepaid to:

Panasonic Exchange Center,
4900 George McVay Drive, Suite B Door #12, McAllen, TX 78503
panacare@us.panasonic.com

Online Repair Request

To submit a new repair and for quick repair status visit our web site at <http://www.panasonic.com/help>

When shipping the unit carefully pack in a padded shipping carton, include all accessories, and send it prepaid. Include a letter detailing the complaint, a return address and provide a day time phone number where you can be reached. P.O. Boxes are not acceptable. Keep the tracking number for your records. A copy of valid registered receipt is required under the 1 year parts and labor Limited Warranty.

For Limited Warranty service for headsets if a headset is included with this product please follow instructions above.

IF REPAIR IS NEEDED DURING THE LIMITED WARRANTY PERIOD THE PURCHASER WILL BE REQUIRED TO FURNISH A SALES RECEIPT/PROOF OF PURCHASE INDICATING DATE OF PURCHASE, AMOUNT PAID AND PLACE OF PURCHASE. CUSTOMER WILL BE CHARGED FOR THE REPAIR OF ANY UNIT RECEIVED WITHOUT SUCH PROOF OF PURCHASE.

Limited Warranty Limits And Exclusions

This Limited Warranty ONLY COVERS failures due to defects in materials or workmanship, and DOES NOT COVER normal wear and tear or cosmetic damage. The Limited Warranty ALSO DOES NOT COVER damages which occurred in shipment, or failures which are caused by products not supplied by the warrantor, or failures which result from accidents, misuse, abuse, neglect, bug infestation, mishandling, misapplication, alteration, faulty installation, set-up adjustments, misadjustment of consumer controls, improper maintenance, power line surge, lightning damage, modification, introduction of sand, humidity or liquids, commercial use such as hotel, office, restaurant, or other business or rental use of the product, or service by anyone other than a Factory Service Center or other Authorized Servicer, or damage that is attributable to acts of God.

THERE ARE NO EXPRESS WARRANTIES EXCEPT AS LISTED UNDER "LIMITED WARRANTY COVERAGE". THE WARRANTOR IS NOT LIABLE FOR INCIDENTAL OR CONSEQUENTIAL DAMAGES RESULTING FROM THE USE OF THIS PRODUCT, OR ARISING OUT OF ANY BREACH OF THIS LIMITED WARRANTY. (As examples, this excludes damages for lost time, lost calls or messages, cost of having someone remove or re-install an installed unit if applicable, travel to and from the servicer. The items listed are not exclusive, but are for illustration only.) **ALL EXPRESS AND IMPLIED WARRANTIES, INCLUDING THE WARRANTY OF MERCHANTABILITY, ARE LIMITED TO THE PERIOD OF THE LIMITED WARRANTY.**

Some states do not allow the exclusion or limitation of incidental or consequential damages, or limitations on how long an implied warranty lasts, so the exclusions may not apply to you. This Limited Warranty gives you specific legal rights and you may also have other rights which vary from state to state. If a problem with this product develops during or after the Limited Warranty period, you may contact your dealer or Service Center. If the problem is not handled to your satisfaction, then write to the warrantor's Consumer Affairs Department at the addresses listed for the warrantor.

PARTS AND SERVICE, WHICH ARE NOT COVERED BY THIS LIMITED WARRANTY, ARE YOUR RESPONSIBILITY.

When you ship the product

- Carefully pack your unit, preferably in the original carton.
- Attach a letter, detailing the symptom.
- Send the unit to Panasonic Exchange Center, prepaid and adequately insured.
- Do not send your unit to Panasonic Corporation of North America listed on the back cover or to executive or regional sales offices. These locations do not repair consumer products.

Warranty (for Canada users)

Panasonic Canada Inc.
5770 Ambler Drive, Mississauga, Ontario L4W 2T3
PANASONIC PRODUCT - LIMITED WARRANTY

EXCHANGE PROGRAM

Panasonic Canada Inc. warrants this product to be free from defects in material and workmanship under normal use and for a period as stated below from the date of original purchase agrees to, at its option either (a) repair your product with new or refurbished parts, (b) replace it with a new or a refurbished equivalent value product, or (c) refund your purchase price. The decision to repair, replace or refund will be made by Panasonic Canada Inc.

Telephone Accessory/Product

One (1) year

This warranty is given only to the original purchaser, or the person for whom it was purchased as a gift, of a Panasonic brand product mentioned above sold by an authorized Panasonic dealer in Canada and purchased and used in Canada, which product was not sold "as is", and which product was delivered to you in new condition in the original packaging.

IN ORDER TO BE ELIGIBLE TO RECEIVE WARRANTY SERVICE HEREUNDER, A PURCHASE RECEIPT OR OTHER PROOF OF DATE OF ORIGINAL PURCHASE, SHOWING AMOUNT PAID AND PLACE OF PURCHASE IS REQUIRED

LIMITATIONS AND EXCLUSIONS

This warranty **ONLY COVERS** failures due to defects in materials or workmanship, and **DOES NOT COVER** normal wear and tear or cosmetic damage. The warranty **ALSO DOES NOT COVER** damages which occurred in shipment, or failures which are caused by products not supplied by Panasonic Canada Inc., or failures which result from accidents, misuse, abuse, neglect, mishandling, misapplication, alteration, faulty installation, set-up adjustments, misadjustment of consumer controls, improper maintenance, improper batteries, power line surge, lightning damage, modification, introduction of sand, humidity or liquids, commercial use such as hotel, office, restaurant, or other business or rental use of the product, or service by anyone other than a Authorized Servicer, or damage that is attributable to acts of God.

Dry cell batteries are also excluded from coverage under this warranty.

THIS EXPRESS, LIMITED WARRANTY IS IN LIEU OF ALL OTHER WARRANTIES, EXPRESS OR IMPLIED, INCLUDING ANY IMPLIED WARRANTIES OF MERCHANTABILITY AND FITNESS FOR A PARTICULAR PURPOSE. IN NO EVENT WILL PANASONIC CANADA INC. BE LIABLE FOR ANY SPECIAL, INDIRECT OR CONSEQUENTIAL DAMAGES RESULTING FROM THE USE OF THIS PRODUCT OR ARISING OUT OF ANY BREACH OF ANY EXPRESS OR IMPLIED WARRANTY. (As examples, this warranty excludes damages for lost time, travel to and from the Authorized Servicer, loss of or damage to media or images, data or other memory or recorded content. This list of items is not exhaustive, but for illustration only.)

In certain instances, some jurisdictions do not allow the exclusion or limitation of incidental or consequential damages, or the exclusion of implied warranties, so the above limitations and exclusions may not be applicable. This warranty gives you specific legal rights and you may have other rights which vary depending on your province or territory.

Installation

CONTACT INFORMATION

For product information and operation assistance, please contact:

Our Customer Care Centre:

Telephone #: 1-800-561-5505

Fax #: (905) 238-2360

Email link: "Support → contact us → email" on
www.panasonic.ca

For defective product exchange within the warranty period, please contact the original dealer or our Customer Care Centre.

Sales Department:
Service des ventes :

Panasonic Corporation of North America
One Panasonic Way, Secaucus, New Jersey 07094

Panasonic Canada Inc.
5770 Ambler Drive, Mississauga, Ontario L4W 2T3

© Panasonic System Networks Co., Ltd. 2012

Printed in China
Imprimé en Chine



PNQX5778ZA

PNQX5778ZA PP1212MG0 (E)

Free Manuals Download Website

<http://myh66.com>

<http://usermanuals.us>

<http://www.somanuals.com>

<http://www.4manuals.cc>

<http://www.manual-lib.com>

<http://www.404manual.com>

<http://www.luxmanual.com>

<http://aubethermostatmanual.com>

Golf course search by state

<http://golfingnear.com>

Email search by domain

<http://emailbydomain.com>

Auto manuals search

<http://auto.somanuals.com>

TV manuals search

<http://tv.somanuals.com>