

NOTICE

Additional Operating Instructions for KX-T7400 Series and Added and Changed Features for the Operating Instructions for the KX-TD208E

User Manual Addendum for KX-T7400 Series

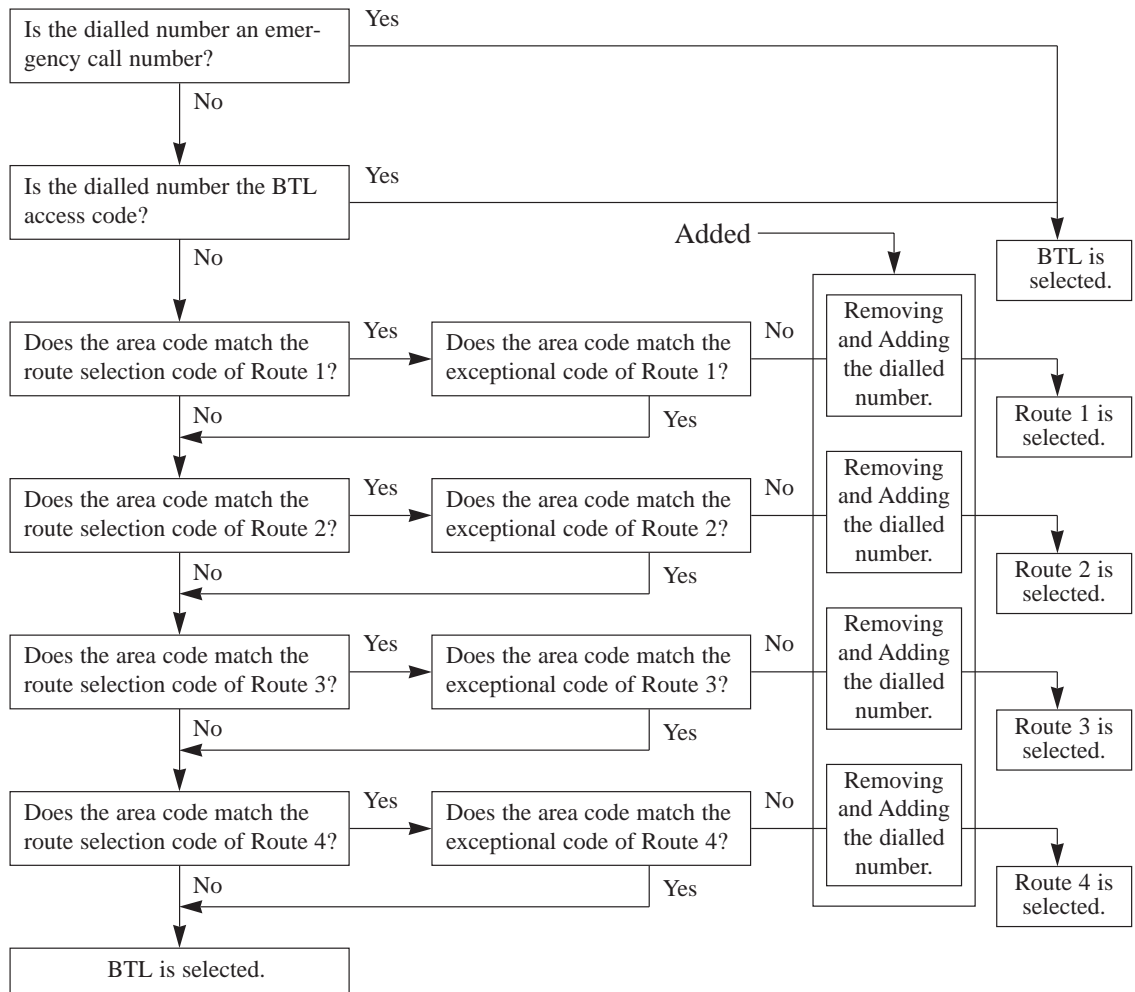
Configuration P. 4-5 KX-T7431 / KX-T7433 / KX-T7436 do **not** have a RINGER Volume Selector.

Added and Changed Features for Operating Instructions

Changed Features — Section 3.1 System Management

Least Cost Routing P. 48 Please delete the third box from the top, “Does the first digit match the leading digit?”. Please use the following flow chart.

Flow Chart of LCR



P. 49 Please delete item (3) “LCR Leading Digit Entry”.

P. 50 Please delete [707] “LCR Leading Digit Entry” from the reference of the Programming addresses.

Other changed items P. 53-55 Please change the default value of [207] “Message Waiting Ring Interval Time” (3.5 Timer Programming) from 10 minutes to **0 minutes**.

P. 53-55 Please delete the System Programming [707] “LCR Leading Digit Entry” (3.10 LCR Programming, 5.4 Default Values).

P. 55 Please delete the following item.

3.10 LCR Programming	[707] LCR Leading Digit Entry	Please change the DEFAULT value from “0” into “Not stored”.
----------------------	-------------------------------	-------------------------------------------------------------

Free Manuals Download Website

<http://myh66.com>

<http://usermanuals.us>

<http://www.somanuals.com>

<http://www.4manuals.cc>

<http://www.manual-lib.com>

<http://www.404manual.com>

<http://www.luxmanual.com>

<http://aubethermostatmanual.com>

Golf course search by state

<http://golfingnear.com>

Email search by domain

<http://emailbydomain.com>

Auto manuals search

<http://auto.somanuals.com>

TV manuals search

<http://tv.somanuals.com>