

Panasonic®

EggCam™

PC Color Camera

GP-KR001

Important Notice:

Your personal computer must have a composite video input port to use this device. You may also connect the camera's microphone to the mic input on your computer's sound card device.

Operating Instructions

Before attempting to connect or operate this product, please read these instructions completely.

N0397-0

YWV8QA4527AN

Printed in Japan

Safety instructions

Observe the following instructions for your own safety and that of the equipment. To reduce the danger of fire or electric shock:

- Do not use an AC adapter other than the provided model A10625.
- Do not expose the equipment to rain or moisture.
- Do not place your equipment near a bath tub, washbasin or other source of water.

FCC statement

This equipment has been tested and found to comply with the limits for a Class B digital device, pursuant to Part 15 of the FCC Rules. These limits are designed to provide reasonable protection against harmful interference in a residential installation.

Radio & TV interference

This equipment generates, uses and can radiate radio frequency energy and, if not installed and used in accordance with the instructions, may cause harmful interference to radio communications. However, there is no guarantee that interference will not occur in a particular installation. If this equipment does cause harmful interference to radio or television reception, which can be determined by turning the equipment off and on, the user is encouraged to try to correct the interference by one of the following measures:

- Reorient or relocate the receiving antenna.
- Increase the separation between the equipment and receiver.
- Connect the equipment into an outlet on a circuit different from that to which the receiver is connected.
- Consult the dealer or an experienced radio/TV technician for help.

FCC Caution: To assure continued compliance, use only shielded interference cables when connecting video camera to computer's video card input. Also any changes or modifications not expressly approved by the party responsible for compliance could void the user's authority to operate this equipment.

For your records

The serial number of this equipment may be found on the bottom. You should note the serial number in the space provided below and retain this book as a permanent record of your purchase to aid identification in the event of theft.

MODEL No. GP-KR001 SERIAL No. _____

Introduction

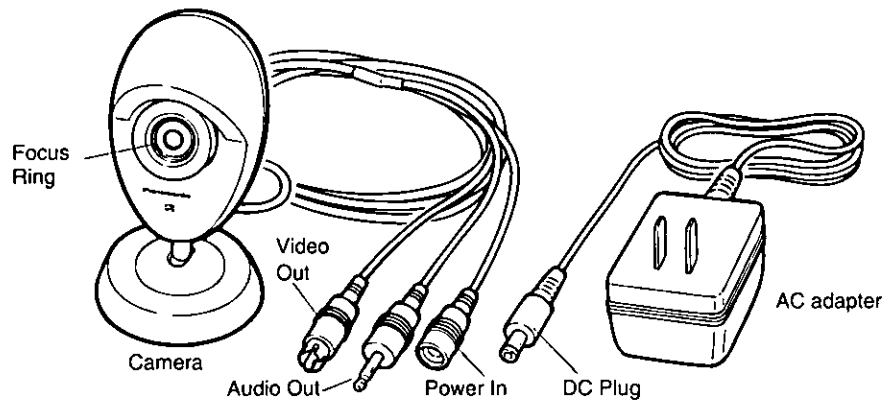
- Thank you for purchasing the Panasonic PC Color Camera. The Panasonic GP-KR001 is an easy to use Analog Video Camera device that is capable of capturing either full motion or still images to your PC. The device outputs images at the rate of 30 FPS (frames per second) in a standard NTSC composite video format.
- The camera also has a built in microphone for audio. This microphone can be connected to the input of a computer's sound card to capture audio.
- Connecting the camera to a personal computer will allow you to transmit video and audio signals for use in video conferences or publishing of documents.
- The compact size of the PC Color Camera makes it ideal for use on the desktop for a wide variety of computer based applications. Connect this camera to your PC and send Video e-mail, create exciting presentations by adding a live demonstration or take still pictures right from you desktop.

What's Included

- Confirm that you have all the components shown below.

Important Notice:

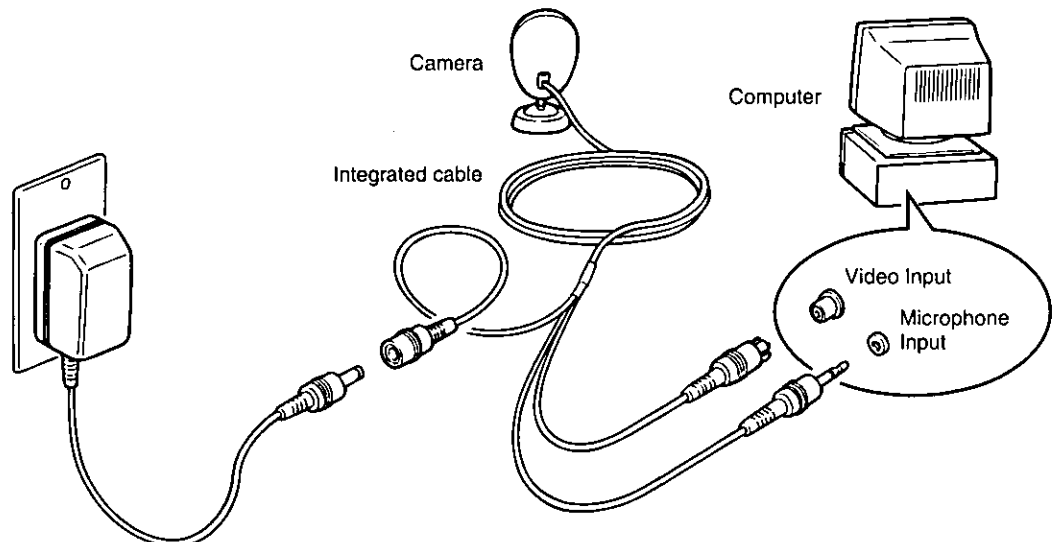
Your personal computer must have a composite Video input port to use this device. You may also connect the camera's microphone to the mic input on you computer's sound card device.



Connecting the camera

The integrated cable attached to the camera has three connectors attached to it. One is for power, one for video output, and one for audio output. Follow the instructions below to connect it to your system.

1. Turn off you computer. (We recommend you also unplug it from the AC power source during this procedure)
2. Attach the video output of the camera to the video input (composite video) on your computer's video capture card/capture device.
3. Connect the microphone output connector to the microphone input on your computer's soundcard.
4. Connect the DC plug of the AC adapter with the Power In socket of the integrated cable.
5. Plug the AC adapter into a standard electrical outlet or power strip.



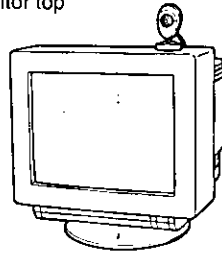
Positioning the camera

Note:

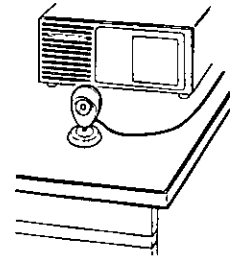
- To protect the camera from possible damage you may want to secure it with double sided adhesive tape (not included) once the desired location is determined.

- The PC Color Camera can be placed on top of the computer monitor or on the desktop.

On monitor top

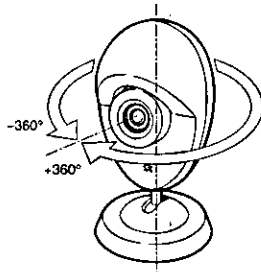


On desktop

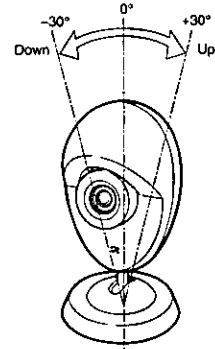


- The PC Color Camera is mounted on a handy tilt and swivel base. You can pan the PC Color Camera ± 360 degrees, and tilt it ± 30 degrees to line up your video shot.

Pan 360 degrees



Tilt 30 degrees



Note:

- Lighting Guidelines
 - 40 lux Underground parking lot
 - 100 lux Hotel lobby
 - 500 lux Conference room
 - 1,000 lux Desktop in the office
 - 5,000 lux Cloudy day outdoors
 - 10,000 lux In the shade outdoors on a fair day

- The PC Color Camera is equipped with an automatic exposure circuit. The PC Color Camera will adjust to light levels between 40 lux and 10,000 lux. You may notice optimum performance in conditions where the ambient light level is between 500 and 1000 lux. In low light level conditions you may notice color fidelity may suffer. Add additional light to improve picture quality if desired.

Operating the camera

Before operating your camera it will be necessary to prepare your computer to capture or preview images on the computers monitor.

- Point the camera at the subject.**
- Adjust the position and size of the subject.**
While watching the preview window on the monitor, turn the camera slowly up and down, left and right so the desired portion of the subject lies in the center of the monitor.
- Adjust the Focus**
While observing the preview monitor, turn the focus ring on the camera for the clearest possible image. The minimum focus distance is 100 mm (about 3.9 inches).

Image with normal ambient lighting

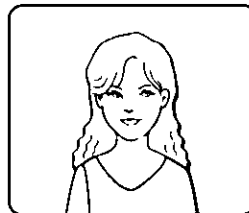
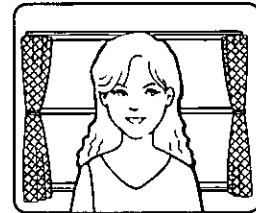


Image spoiled by backlight




Note:

- Avoid pointing the PC Color Camera directly into light sources such as lamps, bright windows, etc. Any visual target in front of the light source will become "back lit", and will likely appear as a shadow, see the example diagrams on the right.

Troubleshooting

If for some reason you do not see images on your computer monitor, check the settings on your video capture device. If your capture device settings appear to be correct, and you suspect the PC Color Camera is not functioning, you can test The PC Color Camera on your Television or VCR, which may be equipped with a video input. Simply connect the PC Color Camera to the video input, select that input on the VCR or television monitor. You should see a picture from the PC Color Camera. If both procedures fail, contact Panasonic Technical support at the number indicated in this operating instruction manual.

Specifications

Lens	Focal length: 4.6 mm F-Stop: F = 2.8 Focus: Manual 100 mm (3-15/16 inches) to infinity View angle: Horizontal: 45 degrees Vertical: 34 degrees
Pick-up system	Image device: 1/4-inch CCD Pixels(approx.): Effective: 250,000(512H x 492V) Total: 270,000(542H x 496V)
Sensitivity	Recommended illumination: 40 lx to 10,000 lx
Video output signals	Standard: NTSC Impedance: 75 Ω Level: 1.0 V[p-p] Signal to noise ratio: 40 dB (AGC Off equivalent) Horizontal resolution: 330 television lines (center portion) White balance: Automatic
Microphone	Impedance: Low impedance Directivity: Omni-directional Operation voltage: DC 2V typical, DC 10V maximum
Power required	Voltage: DC 6V Current: 0.16 A
Cable & Connectors	DC input: 4.4 mm diameter  Video output connector: Standard RCA type pin plug Microphone output connector: 3.6 mm male mini plug Cable Harness length: 1.8 m (5 feet 10 inches) approximate
General	Ambient temperature: 5°C to 35°C (41°F to 95°F) Ambient humidity: 40% to 90% Weight: 60 g (0.13 lbs) Size: 84 (H) x 50 (W) x 51 (D) mm [3-5/16 (H) x 1-15/16 (W) x 2 (D) inches] Pan angle: ±360 degrees Tilt angle: ±30 degrees
AC adapter	Input voltage: AC 120 V Output voltage: DC 6V Consumption: 5 W (typical) Use only AC Adaptor model #A10625 or equivalent.

FOR USERS IN CONTINENTAL UNITED STATES ONLY

Technical Support and Service Parts Calls

If you have read this manual and Setup Manual and you are still having difficulty, please contact the store from which the unit was purchased. Panasonic Communications & Systems Company will repair this product with new or refurbished parts free of charge for two (2) years from the date of purchase.

You may also call the technical support telephone number (24 hours/7 days).

The Technical support number is: 1-800-PANA-SYS
(1-800-726-2797)
The service parts number is: 1-800-332-5348



Panasonic Computer Peripheral Company
Division of Panasonic Communications
& Systems Company
Unit of Matsushita Electric Corporation of America
Two Panasonic Way, Secaucus, New Jersey 07094

For your nearest Dealer/Distributor please call 1-800-742-8086 • Internet: <http://www.panasonic.com>

Free Manuals Download Website

<http://myh66.com>

<http://usermanuals.us>

<http://www.somanuals.com>

<http://www.4manuals.cc>

<http://www.manual-lib.com>

<http://www.404manual.com>

<http://www.luxmanual.com>

<http://aubethermostatmanual.com>

Golf course search by state

<http://golfingnear.com>

Email search by domain

<http://emailbydomain.com>

Auto manuals search

<http://auto.somanuals.com>

TV manuals search

<http://tv.somanuals.com>