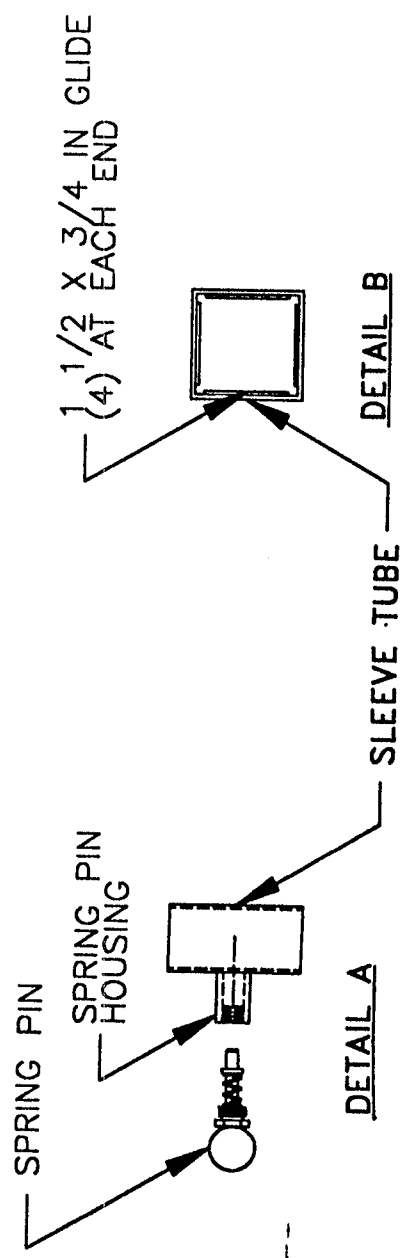
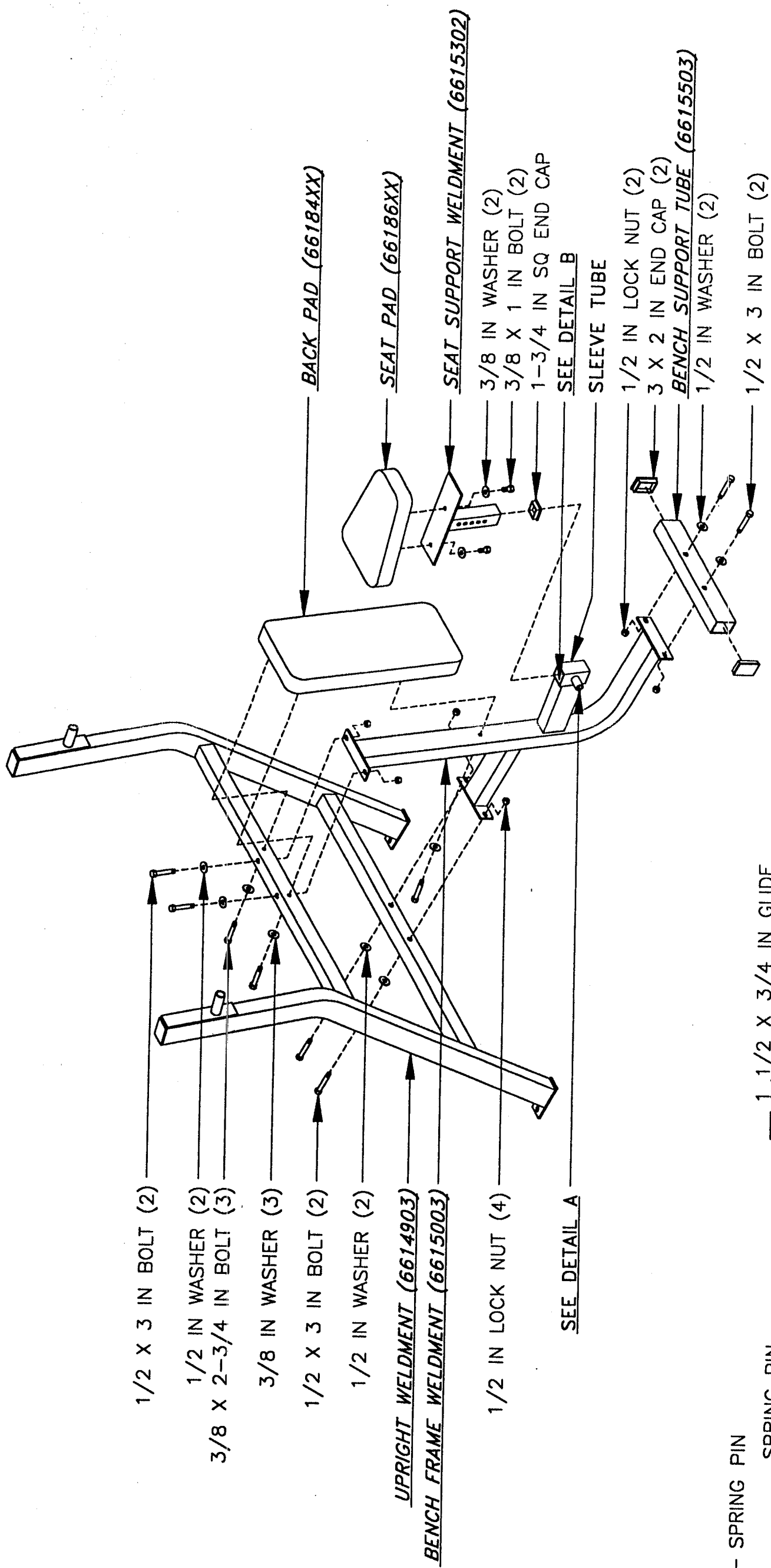


DASH NO	DESCRIPTION
01	AS SHOWN

REVISIONS			
REV	DESCRIPTION	CHG NO	APP'D

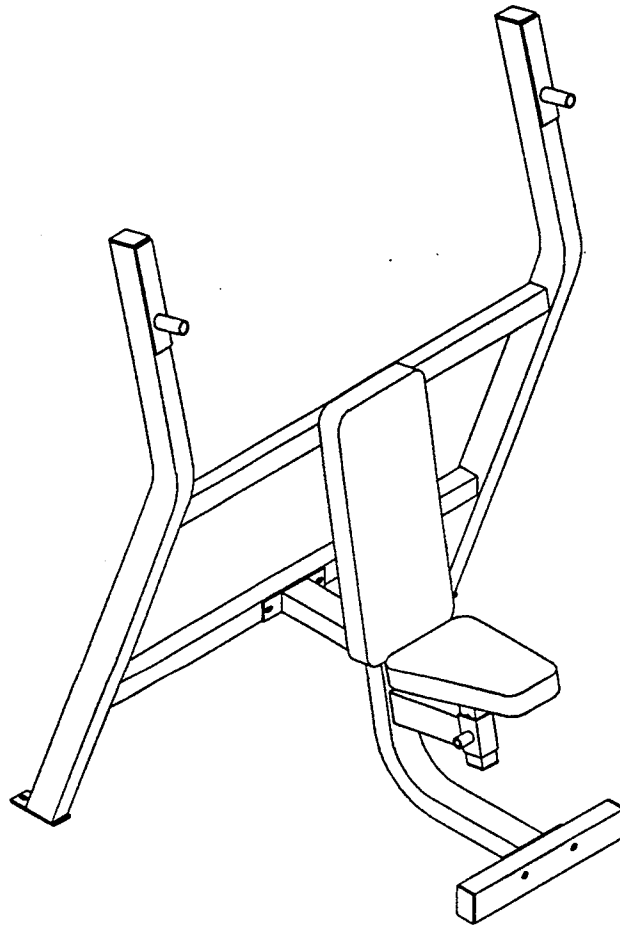


TOLERANCES (EXCEPT AS NOTED)	PARABODY, INC.		
DECIMAL	RAMSEY, MINNESOTA		
FRACTIONAL	TITLE	CHK'D	APP'D
ANGULAR	ASSY INST, 940101	MGN	6/96
	SCALE 1/16	SIZE	66266
	SHEET 1 OF 1	B	
	DR	MGN	6/96
		CHK'D	MGN
			6/96



ParaBody
940101
SHOULDER PRESS BENCH
ASSEMBLY INSTRUCTIONS

940101
SHOULDER PRESS BENCH
ASSEMBLY INSTRUCTIONS



ParaBody, Incorporated
14150 Sunfish Lake Boulevard
Ramsey, MN 55303
1-800-328-9714

Part # 6626601

1

Revision: 06/10/96

THANK YOU

FOR PURCHASING THE 940101 SHOULDER PRESS BENCH. PLEASE SAVE THESE ASSEMBLY INSTRUCTIONS FOR YOUR PERSONAL REFERENCE, AND ADDITIONAL SERVICE INFORMATION.

*****IMPORTANT*****

- **THE 940101 SHOULDER PRESS BENCH MUST BE ASSEMBLED ON A FLAT, LEVEL SURFACE TO ASSURE ITS PROPER FUNCTION.**
- **PARABODY STRONGLY RECOMMENDS THAT THIS PRODUCT BE ASSEMBLED BY TWO PEOPLE TO AVOID POSSIBLE INJURY.**
- **IF YOU EXPERIENCE ANY PROBLEM WITH THE ASSEMBLY OF THIS PRODUCT, PLEASE CONTACT YOUR DEALER OR YOUR PARABODY CUSTOMER SERVICE REPRESENTATIVE AT: 1-800-328-9714**
- **TOOLS REQUIRED: RATCHET, 3/4 SOCKET and WRENCH, 9/16 SOCKET and WRENCH, and RUBBER Mallet or HAMMER.**

1. **SECURELY** assemble the **BENCH FRAME WELDMENT** to the **UPRIGHT FRAME WELDMENT** as shown on drawing.
2. Insert two (2) 3 X 2 IN END CAPS into the ends of the **BENCH SUPPORT TUBE**, and **SECURELY** assemble it to the **BENCH FRAME WELDMENT** as shown on drawing.
3. Attach eight (8) 1-1/2 X 3/4 IN GLIDES to the **SLEEVE TUBE** on the **BENCH FRAME WELDMENT** as shown in **DETAIL B**.
4. **SECURELY** assemble the **SPRING PIN** to the **SPRING PIN HOUSING** of the **SLEEVE TUBE** as shown in **DETAIL A**.
5. Insert one (1) 1-3/4 IN SQ END CAP into the end of the **SEAT SUPPORT WELDMENT** as shown on drawing.
6. **SECURELY** assemble the **SEAT PAD** to the **SEAT SUPPORT WELDMENT** as shown on drawing.
7. Pull back the **SPRING PIN** on the **SLEEVE TUBE** of the **BENCH FRAME WELDMENT** and insert the **SEAT SUPPORT WELDMENT**. Release the **SPRING PIN** into the desired hole.
8. **SECURELY** assemble the **BACK PAD** to the **UPRIGHT FRAME**, and **BENCH FRAME WELDMENTS** as shown on drawing.

940101 SHOULDER PRESS BENCH ASSEMBLY PARTS LIST

SORT AND COUNT ALL PARTS BEFORE BEGINNING ASSEMBLY

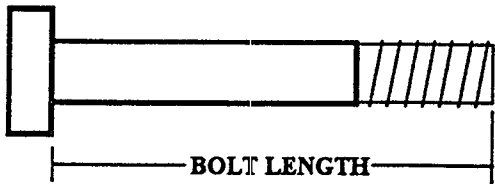
HARDWARE:

ITEM	NAME/DESCRIPTION	QTY
1.	1/2 X 3 IN BOLT	6
2.	3/8 X 2-3/4 IN BOLT	3
3.	3/8 X 1 IN BOLT	2
4.	1/2 IN WASHER	6
5.	3/8 IN WASHER	5
6.	1/2 IN LOCK NUT	6
7.	SPRING PIN	1
8.	3 X 2 IN END CAP	2
9.	1-3/4 IN SQ END CAP	1
10.	1-1/2 X 3/4 IN GLIDE (8 PER)	1

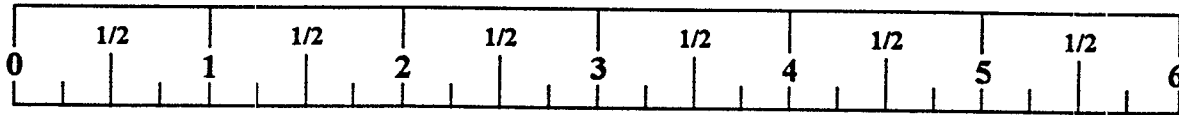
WELDMENTS/PARTS:

ITEM	NAME/DESCRIPTION	QTY
1.	UPRIGHT FRAME WELDMENT(6614903).....	1
2.	BENCH FRAME WELDMENT(6615003).....	1
3.	SEAT SUPPORT WELDMENT(6615302).....	1
4.	BENCH SUPPORT TUBE(6615503).....	1
5.	SEAT PAD(66186XX).....	1
6.	BACK PAD(66184XX).....	1

NOTE: BOLT LENGTH IS MEASURED FROM THE UNDERSIDE OF THE HEAD OF THE BOLT.



BOLT LENGTH RULER:



Free Manuals Download Website

<http://myh66.com>

<http://usermanuals.us>

<http://www.somanuals.com>

<http://www.4manuals.cc>

<http://www.manual-lib.com>

<http://www.404manual.com>

<http://www.luxmanual.com>

<http://aubethermostatmanual.com>

Golf course search by state

<http://golfingnear.com>

Email search by domain

<http://emailbydomain.com>

Auto manuals search

<http://auto.somanuals.com>

TV manuals search

<http://tv.somanuals.com>