



Strength Building Gear

336101

350104 LEG PRESS ADAPTER KIT

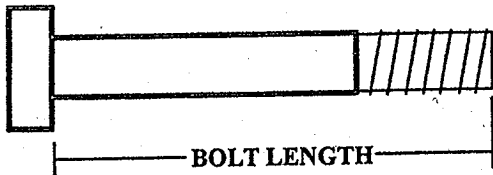
ASSEMBLY INSTRUCTIONS

SORT AND COUNT ALL PARTS BEFORE BEGINNING ASSEMBLY

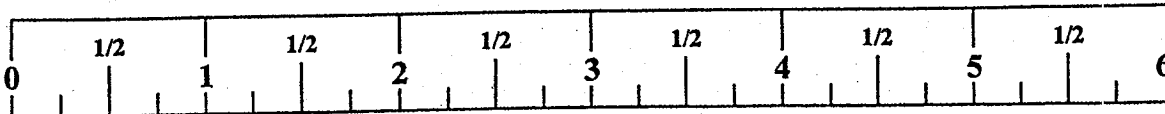
HARDWARE:

ITEM	NAME/DESCRIPTION	QTY
1.	3/8 X 2 IN. BOLT	3
2.	3/8 X 3 IN. BOLT	4
3.	3/8 IN. WASHER	8
4.	3/8 IN. LOCK NUT	6
5.	2-3/8 IN. CABLE RETAINING CLIP	2
6.	2-7/8 IN. CABLE RETAINING CLIP	1
7.	2 IN. SQ PARABODY COVER CAP	2
8.	3-1/2 X 1 IN. PULLEY	2

NOTE: BOLT LENGTH IS MEASURED FROM THE UNDERSIDE OF THE HEAD OF THE BOLT.



BOLT LENGTH RULER:



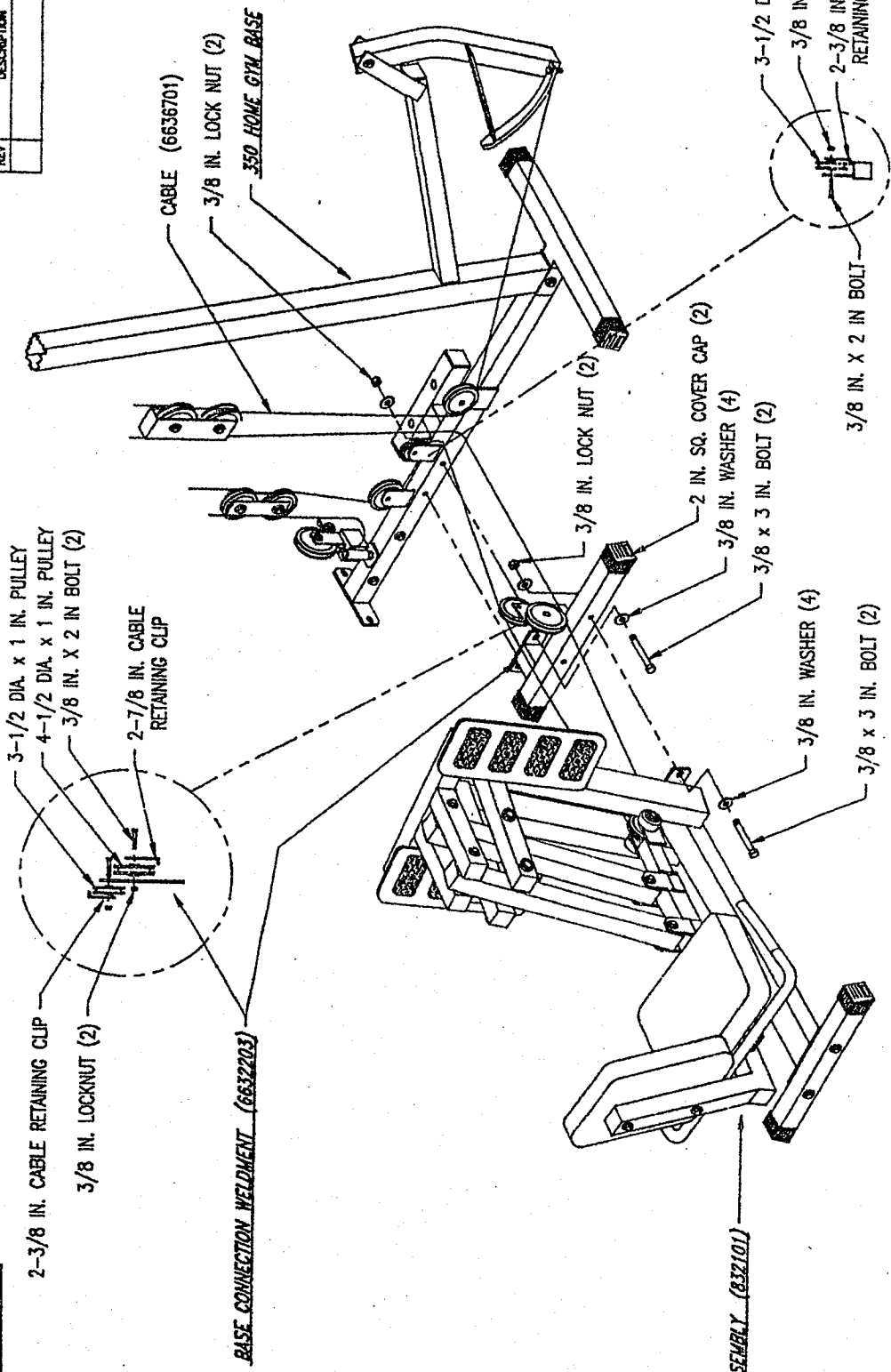
35010 LEG PRESS ADAPTER KIT ASSEMBLY INSTRUCTIONS

NOTE: THE LEG PRESS ATTACHMENT (832101) MUST BE ASSEMBLED BEFORE ASSEMBLING IT TO THE PARABODY 350. PLEASE ASSEMBLE THE LEG PRESS ATTACHMENT AT THIS TIME USING THE 832 PRODUCT ASSEMBLY INSTRUCTIONS.

1. Insert two (2) 2 SQ. IN. PARABODY COVER CAPS onto the **BASE CONNECTION WELDMENT** as shown on drawing.
2. Remove middle 4-1/2 X 1 IN. PULLEY, 3/8 X 1-3/4 IN. BOLT, and 3/8 IN. LOCK NUT from the 350 **BASE**.
3. Remove the **SECONDARY (LOWER) CABLE** from the 350.
4. **NOTE:** The **SECONDARY (LOWER) CABLE** will no longer be needed.
5. **SECURELY** assemble the **BASE CONNECTION WELDMENT** to the 832 using two (2) 3/8 X 3 IN. BOLTS, four (4) 3/8 IN. WASHERS, and two (2) 3/8 IN. LOCK NUTS.
6. **LOOSELY** assemble one (1) 4-1/2 X 1 IN. PULLEY, from step 2, to the lower hole on the right side of the **BASE CONNECTION WELDMENT** using one (1) 3/8 x 2 IN. BOLT, one (1) 2-7/8 IN. CABLE RETAINING CLIP, and one (1) 3/8 IN. LOCK NUT.
7. **LOOSELY** assemble one (1) 3-1/2 X 1 IN. PULLEY to the upper hole on the left side of the **BASE CONNECTION WELDMENT** using one (1) 3/8 x 2 IN. BOLT, one (1) 2-3/8 IN. CABLE RETAINING CLIP, and one (1) 3/8 IN. LOCK NUT.
8. **LOOSELY** assemble one (1) 3-1/2 X 1 IN. PULLEY to the middle pulley flat of the 350 **BASE** using one (1) 3/8 x 2 IN. BOLT, one (1) 2-3/8 IN. CABLE RETAINING CLIP, and one (1) 3/8 IN. LOCK NUT.
9. **SECURELY** attach the **BASE CONNECTION WELDMENT** and the 832 to the base of the 350 using two (2) 3/8 X 3 IN. BOLTS, four (4) 3/8 IN. WASHERS, and two (2) 3/8 IN. LOCK NUTS.
10. Following the cable routing diagram, thread the **LEG PRESS CABLE** from the **SWIVEL LOW ROW** through the **BASE CONNECTION WELDMENT** and around the pulley in the 832. (The pulley, wheels, and spacers may need to be temporarily removed) and to the cam on the **LEG CURL/EXT**.
11. **SECURE** end of **LEG PRESS CABLE** to the cam using the hardware removed in step 3.
12. **SECURELY** tighten all pulley connections, making sure that the **CABLE RETAINING CLIPS** are facing the correct direction as shown in drawing.
13. If upon completion of assembly, the head plate does not sit on top of first weight plate or there is excess slack in the cable system, refer to your 350 **ASSEMBLY INSTRUCTIONS**. (**NOTE:** Some slack in the cable system is needed to allow for pre-stretch adjustment in the 832 leg press.)

REVISIONS			
REV	DESCRIPTION	CHG NO	APPRO DATE

DASH NO	DESCRIPTION
01	AS SHOWN



TOLERANCES (EXCEPT AS NOTED)	DECIMAL	~
FRACTIONAL	~	~
ANGULAR	~	~
TITLE ASSY INST. 336101		
SCALE	1/12	DRAWING NO.
SHEET	1 OF 1	B
OR	AGM	DATE
		5/68

PARABODY, INC.
 RAMSEY, MINNESOTA

66381

Free Manuals Download Website

<http://myh66.com>

<http://usermanuals.us>

<http://www.somanuals.com>

<http://www.4manuals.cc>

<http://www.manual-lib.com>

<http://www.404manual.com>

<http://www.luxmanual.com>

<http://aubethermostatmanual.com>

Golf course search by state

<http://golfingnear.com>

Email search by domain

<http://emailbydomain.com>

Auto manuals search

<http://auto.somanuals.com>

TV manuals search

<http://tv.somanuals.com>