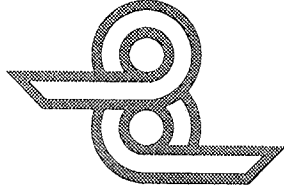


## **PBF072 45 DEGREE HYPEREXTENSION ASSEMBLY INSTRUCTIONS**

11. To secure the TELESCOPE ASSEMBLY in place, use one (1) THUMB SCREW. (SEE DETAIL A)
12. Slide two (2) 4 X 7 IN. ROLLER PADS onto each end of the ROLLER PAD SHAFT on the TELESCOPE ASSEMBLY, and hold in place using two (2) STAR LOCK COLLARS. (SEE DRAWING)
13. Slide two (2) 4 X 7 IN. ROLLER PADS over each end of the HANDLE on the TELESCOPE ASSEMBLY. (COAT THE INSIDE OF THE ROLLER PAD WITH WATER, THEN PROCEED TO SLIDE THE ROLLER PADS ONTO HANDLE. (ROTATING THE PAD WHILE PUSHING WILL EASE THE ASSEMBLY)
14. Slide two (2) 1-1/4 X 5 IN. GRIPS over each end of the HANDLE on the TELESCOPE ASSEMBLY.

**PARABODY INC.**



## **45 DEGREE HYPEREXTENSION PBF072**

### **PRODUCT ASSEMBLY INSTRUCTION SHEETS**

#### **TOOLS REQUIRED FOR ASSEMBLY**

- 9/16 INCH WRENCH or SOCKET
- ADJUSTABLE WRENCH
- RUBBER MALLET or HAMMER

**REVISION: B**

If you experience any problem with the assembly of this product, please contact your dealer or your PARABODY Customer Service Representative at:

**1-800-328-9714**

## PBF072 45 DEGREE HYPEREXTENSION ASSEMBLY PARTS LIST

### SORT AND COUNT ALL PARTS BEFORE BEGINNING ASSEMBLY

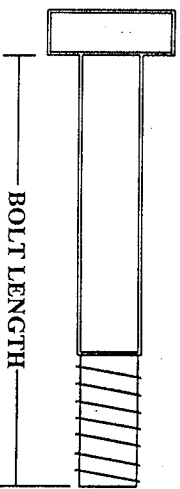
#### HARDWARE:

ITEM	NAME/DESCRIPTION	QTY
1.	3/8 X 3-1/4 IN. BOLT	2
2.	3/8 IN. WASHER	4
3.	3/8 IN. LOCK WASHER	2
4.	3/8 IN. NUT	2
5.	STAR LOCK COLLAR	4
6.	THUMBSCREW	1
7.	PLUNGER	1
8.	SPACER	1
9.	SPRING	1
10.	COTTER PIN	1
11.	KNOB	1
12.	2-1/2 IN. DIA. ROUND END CAP	2
13.	2 IN. SQ. END CAP	3
14.	1-3/4 IN. SQ. END CAP	1
15.	1-1/2 IN. SQ. END CAP	2
16.	1-1/4 X 5 IN. GRIP	2
17.	2-1/2 X 5-1/2 IN NON SKID STRIP	2
18.	PARAGLIDE STRIP	1

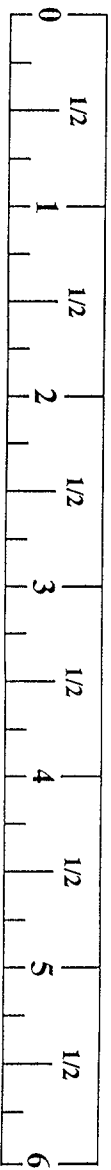
#### WELDMENT/PARTS:

ITEM	NAME/DESCRIPTION	QTY
1.	BASE ASSEMBLY (PB3506-1)	1
2.	TELESCOPE ASSEMBLY (PB3500-1)	1
3.	BRACE ASSEMBLY (PB3503-1)	1
4.	ROLLER PAD SHAFT (PB1251-1)	1
5.	4 X 7 IN. ROLLER PAD (PB1946-1)	6

NOTE: BOLT LENGTH IS MEASURED FROM THE UNDERSIDE OF THE HEAD OF THE BOLT.



BOLT LENGTH RULER:



## PBF072 45 DEGREE HYPEREXTENSION ASSEMBLY INSTRUCTIONS

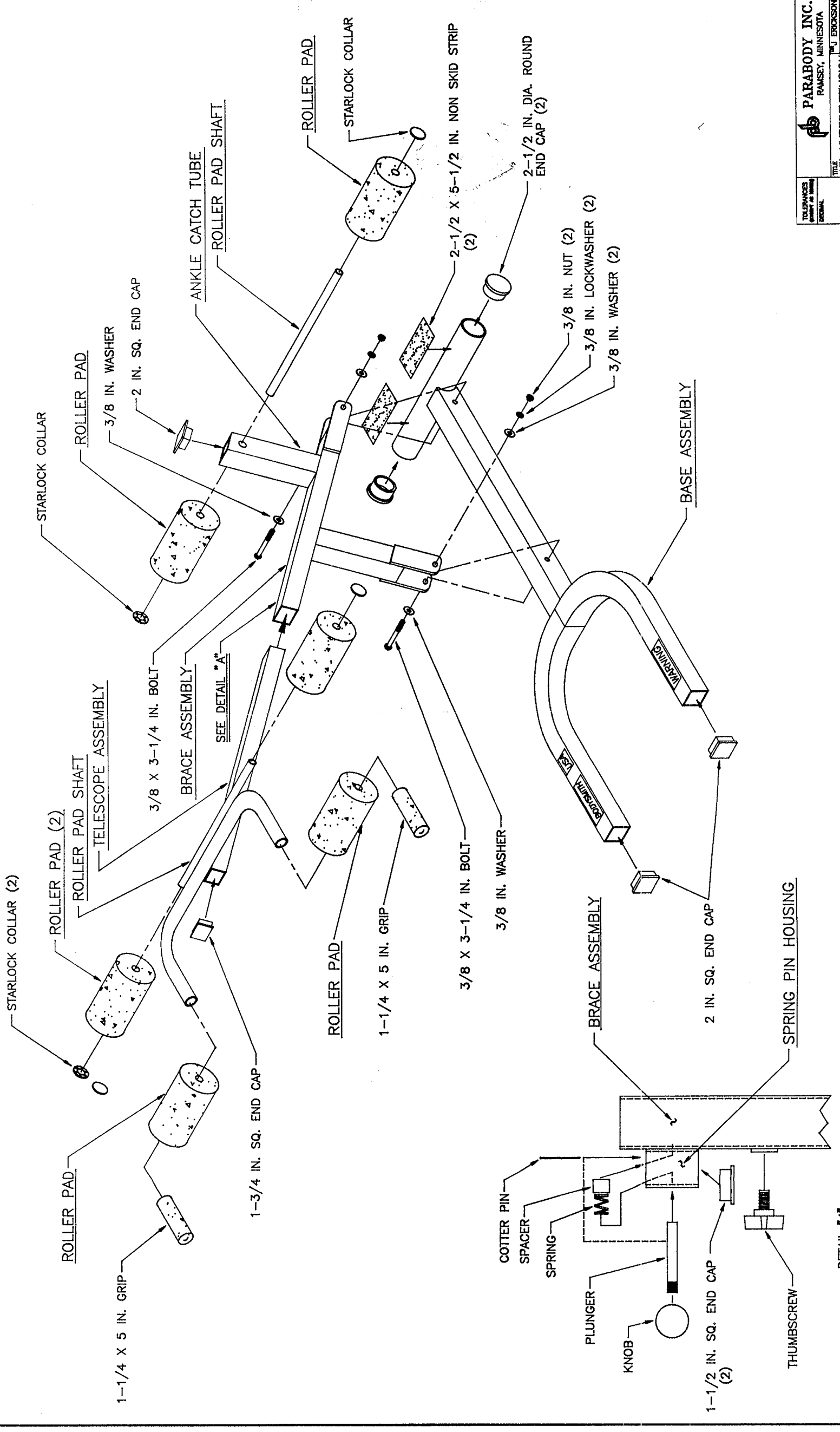
### IMPORTANT:

- THE BODYSMITH 45 DEGREE HYPEREXTENSION SHOULD BE ASSEMBLED ON A FLAT LEVEL SURFACE TO ASSURE ITS PROPER FUNCTION.

1. Attach two (2) 2-1/2 X 5-1/2 IN. NON SKID STRIPS to the ROUND TUBE on the BASE ASSEMBLY as shown on drawing.
2. Insert two (2) 2-1/2 IN. DIA. ROUND END CAPS into the ends of the ROUND TUBE of the BASE ASSEMBLY. Also insert two (2) 2 IN. SQ. END CAPS into the front end of the BASE ASSEMBLY. (SEE DRAWING)
3. Insert one (1) 2 IN. SQ. END CAP into the end of the ANKLE CATCH TUBE of the BRACE ASSEMBLY. (SEE DRAWING)
4. SECURELY assemble the BRACE ASSEMBLY to the BASE ASSEMBLY as shown on drawing, using two (2) 3/8 X 3-1/4 IN. BOLTS, four (4) 3/8 IN. WASHERS, two (2) 3/8 IN. LOCK WASHERS, and two (2) 3/8 IN. NUTS.
5. Assemble two (2) 4 X 7 IN. ROLLER PADS, and one (1) ROLLER PAD SHAFT to the ANKLE CATCH TUBE of the BRACE ASSEMBLY, using two (2) STAR LOCK COLLARS. (SEE DRAWING)
6. Assemble the SPRING PIN ASSEMBLY to the SPRING PIN HOUSING on the BRACE ASSEMBLY, using one (1) KNOB, one (1) PLUNGER, one (1) SPRING, one (1) SPACER, and one (1) COTTER PIN, using the following steps:
  - A. Assemble the KNOB to the PLUNGER.
  - B. Insert the PLUNGER through the first hole of the HOUSING.
  - C. Slip the SPRING and the SPACER over the end of the PLUNGER. (IN THAT ORDER)
  - D. Insert the PLUNGER through the second hole of the HOUSING.
  - E. Pull back the SPACER on the PLUNGER and insert the COTTER PIN through the hole.
  - F. SEE DETAIL A ON DRAWING.
7. Insert two (2) 1-1/2 IN. SQ. END CAPS into both ends of the SPRING PIN HOUSING on the BRACE ASSEMBLY.
8. Insert one (1) 1-3/4 IN. SQ. END CAP into the end of the TELESCOPE ASSEMBLY. (ON THE END WITH THE HANDLE)
9. Attach four (4) PARAGLIDE STRIPS to the end of the TELESCOPE ASSEMBLY, and four (4) PARAGLIDE STRIPS to the inside of the BRACE ASSEMBLY END as shown on drawing (2 OF 2), using the following steps:
  - Thoroughly clean all surfaces where the paraglide strips are to be attached.
  - Remove the paper backing from the paraglide strips and firmly apply them to all shown surfaces (8 places).
10. Pull back the SPRING PIN on the BRACE ASSEMBLY and insert the TELESCOPE ASSEMBLY, and slide it down to the desired setting.

REV.	DESCRIPTION	DATE	BY
1	A NEW RELEASE	2009 JE	4/A

FIG. 1

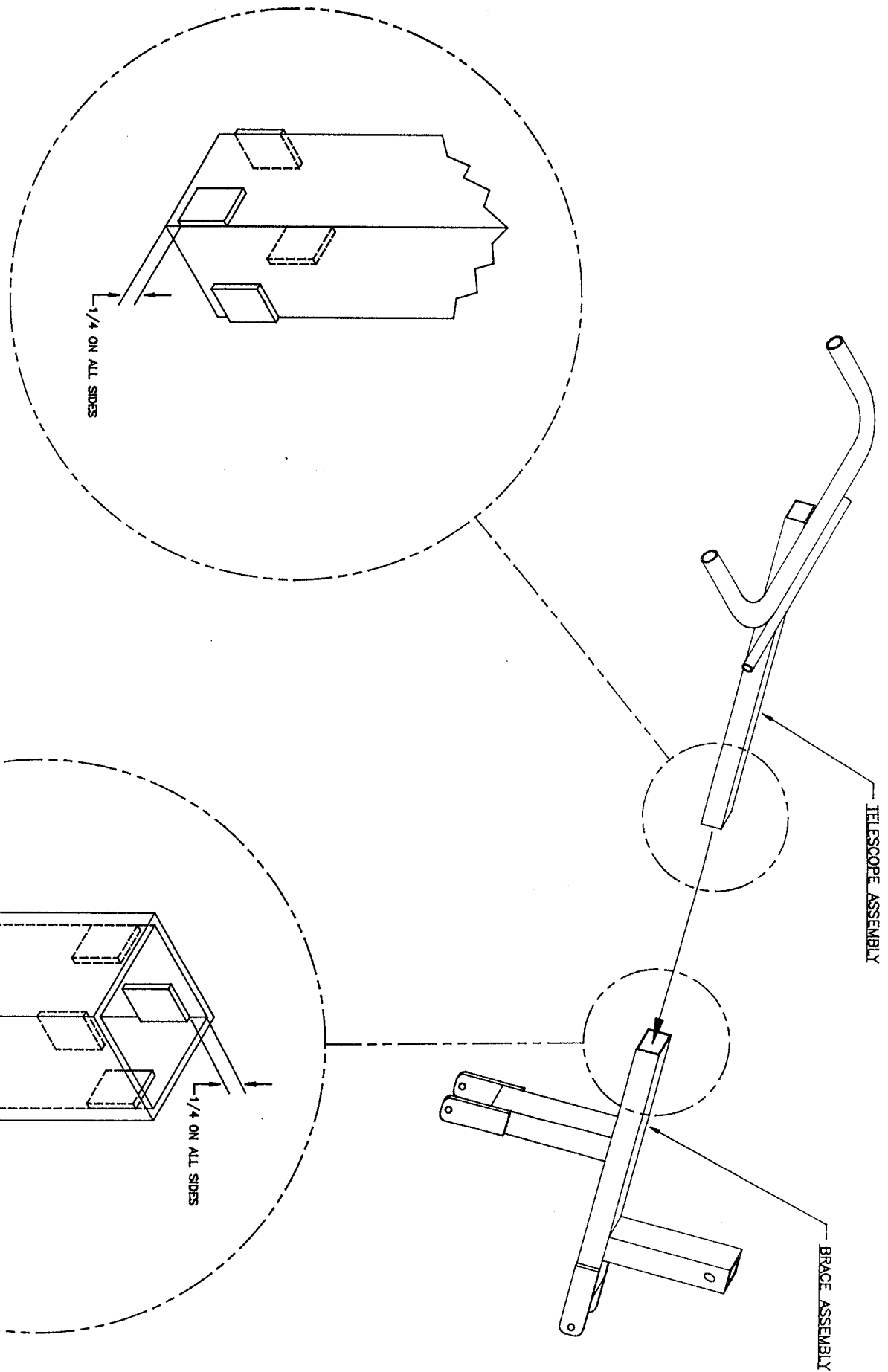


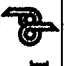
DETAIL "A"

TOLERANCES	UNLESS OTHERWISE SPECIFIED
FRONT VIEW	FRACTIONAL
REAR VIEW	DECIMAL

<b>PARABODY INC.</b> RAMSEY, MINNESOTA	TITLE <b>45° HYPEREXTENSION ASSEMBLY INSTRUCTION</b>
DRAWN BY J. ERICKSON/47/46	CHECKED BY J. ERICKSON/47/46
SCALE 1/5" = 1"	PART NUMBER PBF072



TOLERANCES UNLESS OTHERWISE SPECIFIED	 <b>PARABODY INC.</b> RAMSEY, MINNESOTA
FINISHES	
TITLE	45° HYPEREXTENSION ASSEMBLY INSTRUCTION
DATE	1/5/21
REVISED BY	JD
PROJECT NO.	PBF072

## Free Manuals Download Website

<http://myh66.com>

<http://usermanuals.us>

<http://www.somanuals.com>

<http://www.4manuals.cc>

<http://www.manual-lib.com>

<http://www.404manual.com>

<http://www.luxmanual.com>

<http://aubethermostatmanual.com>

Golf course search by state

<http://golfingnear.com>

Email search by domain

<http://emailbydomain.com>

Auto manuals search

<http://auto.somanuals.com>

TV manuals search

<http://tv.somanuals.com>