

Installation Sheet and Users Guide

DSL Modem

STORMPORT™

PARADYNE®

FCC Compliance Information

Federal Communications Commission
 Compliance Information Statement (FCC Rules Section 2.1077)
 2.1077 (a) (1) Product identification
 Name: StormPort 620 Modem, Product code: 02-00079-03
 Name: StormPort 1020 Modem, Product code: 02-00100-01
 2.1007 (C) The compliance information statement shall be included in the user guide or as a separate sheet.

2.1077 (a) (2) Compliance Statement
 This device complies with part 15 of the FCC rules. Operation is subject to the following two conditions:
 a. This device may not cause harmful interference, and
 b. This device must accept any interference receive, including interference that may cause undesired operation.

2.1077 (a) (3) Responsible Party (FCC 2.909)
 Paradyne Corporation
 8545 128th Avenue
 Largo, FL 33773
 Phone: 727-530-2000
 www.paradyne.com

FCC Information to User

(FCC Rules Section 15.105(b)):
 Note: The StormPort Modem has been tested and found to comply with the limits for a Class B digital device, pursuant to part 15 of the FCC Rules. These limits are designed to provide reasonable protection against harmful interference in a residential installation. This equipment generates, uses, and can radiate radio frequency energy and, if not installed and used in accordance with the instructions, may cause harmful interference to radio communications. However, there is no guarantee that interference will not occur in a particular installation. If this equipment does cause harmful interference to radio and television reception, which can be determined by turning the equipment OFF and ON, the user is encouraged to try to correct the interference by one or more of the following measures:
 -Reorient or relocate the receiving antenna
 -Increase the separation between the equipment and receiver
 -Connect the equipment into an outlet on a circuit different from that to which the receiver is connected.
 -Consult the dealer or an experienced radio/television technician for help.

Customer Instructions

The Phone Filters comply with part 68 of the FCC Rules. On the back of this equipment is a designator that contains the FCC registration number and ringer equivalence for this equipment. If requested, this information must be provided to the telephone company. The equipment uses the following standard connections and codes: USOC-RJ-11.
 The Phone Filters also comply with part 1950 of the UL certifications, and part 22.2 of the CSA certifications.
 The Ringer Equivalence Number (REN) shown on the filter is used to determine the quantity of devices which may be connected to the telephone line. Excessive RENs on the telephone line may result in another device not ringing in response to an incoming call. The sum of the RENs should not exceed (5). To be certain of the number of devices that may be connected to a line, as determined by the total RENs, contact the local telephone company.
 If the equipment causes harm to the telephone network, the telephone company will notify you in advance that temporary discontinuance of service may be required. But if advance notice is not practical, the telephone company will notify the customer as soon as possible. Also, you will be advised of your right to file a complaint with the FCC if you believe it is necessary.
 The telephone company may make changes in its facilities, equipment, operations or procedures that could affect the operation of the equipment. If this happens the telephone company will provide advance notice in order for you to make necessary modifications to maintain uninterrupted service.
 If the equipment is causing harm to the telephone network, the telephone company may request that you disconnect the equipment until the problem is resolved.
 The equipment can not be used on public coin phone service provided by the telephone company. Connection to party lines is subject to state tariffs. (contact the state public utility commission, public service commission or corporation commission for information).
 No repairs can be performed by the user. If you experience trouble with this equipment and/or for repair and warranty information, please contact distributor technical support.



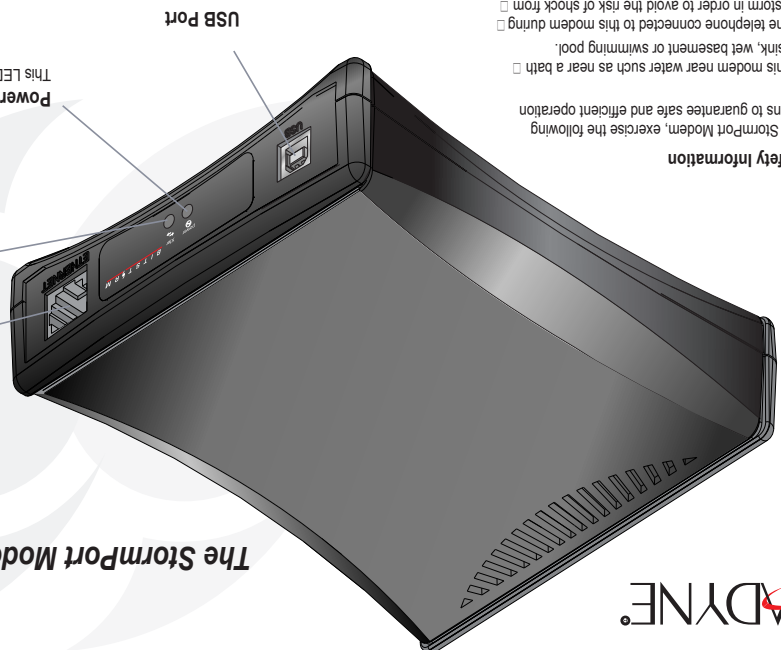
PARADYNE®

1020-A2-GN70-00



Copyright © 2002 Paradyne Corporation. All Rights Reserved.

Important Safety Information
 When using the StormPort Modem, exercise the following safety precautions to guarantee safe and efficient operation of your modem:
 (1) Do not use this modem near water such as near a bath tub, kitchen sink, wet basement or swimming pool.
 (2) Do not use the telephone connected to this modem during an electrical storm in order to avoid the risk of shock from lightning.
 Note: While this modem meets stringent telecommunication industry standards for current and voltage surges, the warranty does not cover failures caused by lightning.



Power LED
 This LED is green when the modem is receiving power.

Transfer LED
 When the LED is flashing yellow, it is "training" (communicating with equipment at the ISP), and the LED will change to green when this process has completed. The LED will stay off if the modem is unable to "train" with the ISP equipment. Under normal operation, this LED flashes green when the modem is transferring data to and from the Internet.

Ethernet Port

USB Port

The StormPort Modem offers both Ethernet and USB connection

PARADYNE®

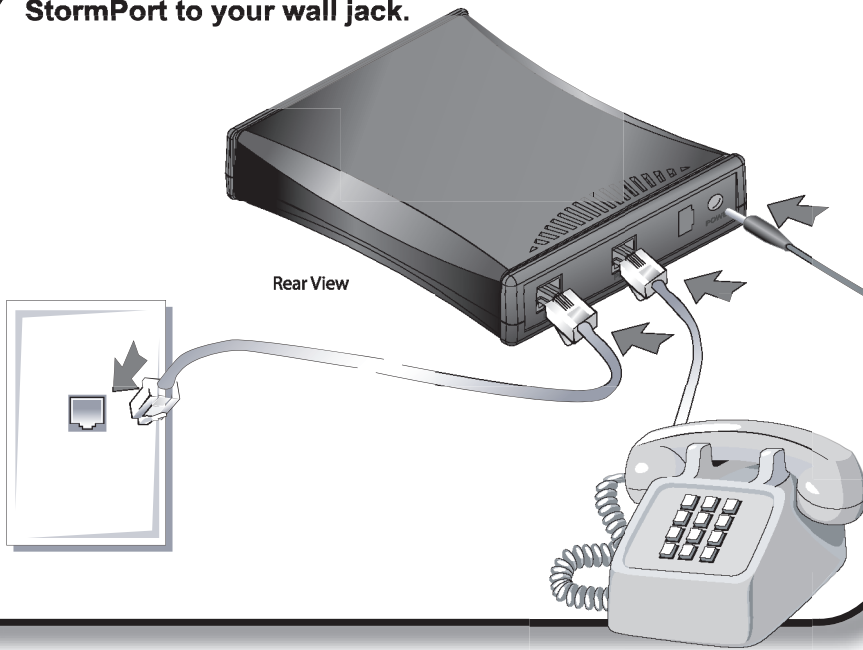
GETTING STARTED...

PARADYNE®

Installing the StormPort Modem is easy!

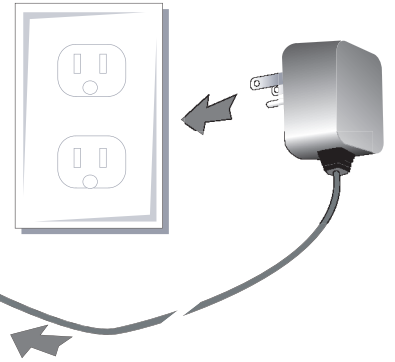
1

Connect your telephone to the StormPort and connect the StormPort to your wall jack.



2

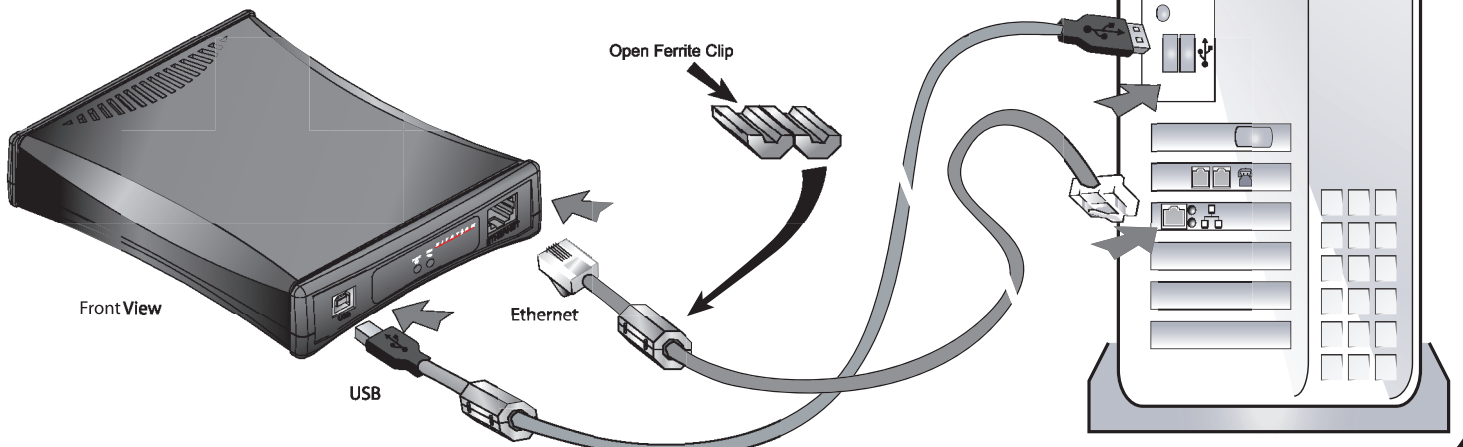
Connect the StormPort power supply.



3

Connect the StormPort to the Ethernet and/or the USB ports.

The StormPort Modem gives you great flexibility by allowing you to connect to the USB and the Ethernet ports individually or both at the same time. To use the Ethernet port, make sure you have an Ethernet card installed in your computer. To use the USB port, you will need to install the USB drivers to your computer system. Fasten Ferrite Clip to Ethernet and USB cables 1 inch from connector as shown.

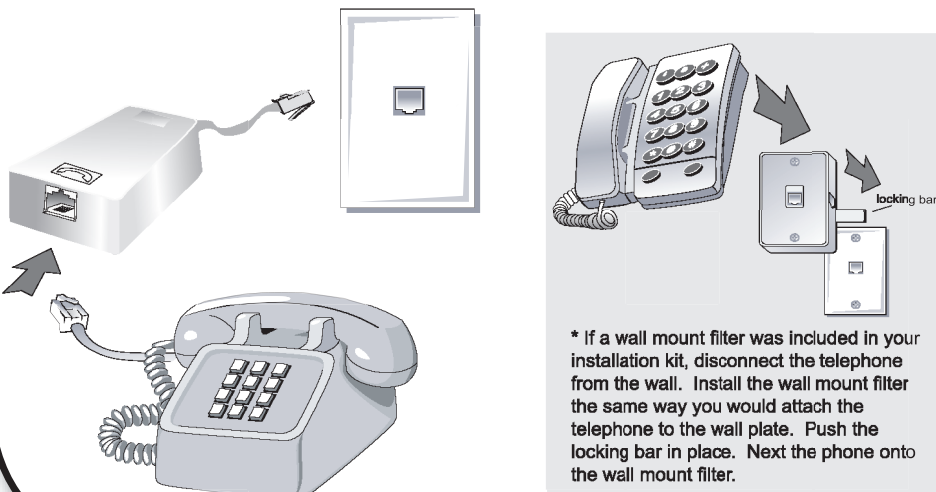


Note: You can also connect to two (2) computers, one (1) on the USB port and one (1) on the Ethernet port.

4

Install in-line filters on each additional telephone extension.

To install the in-line filter, disconnect your telephone line cable from the wall jack and insert it into the jack on the in-line filter. Next plug the filter's "pig tail" end into the wall jack. (DO NOT connect the in-line filter to your StormPort modem.)



5

Install the StormPort USB drivers.



To install the USB drivers, locate the USB driver CD (included with your modem). Follow the instructions for installing the drivers on the back of the CD case.

Note: You will need your Windows CD to complete the installation. (Your service provider may also supply additional software for installation.)

Free Manuals Download Website

<http://myh66.com>

<http://usermanuals.us>

<http://www.somanuals.com>

<http://www.4manuals.cc>

<http://www.manual-lib.com>

<http://www.404manual.com>

<http://www.luxmanual.com>

<http://aubethermostatmanual.com>

Golf course search by state

<http://golfingnear.com>

Email search by domain

<http://emailbydomain.com>

Auto manuals search

<http://auto.somanuals.com>

TV manuals search

<http://tv.somanuals.com>