

NETLINK™ ACCESS PRODUCTS

The Patton 2720 T1 CSU/DSU terminates T1 and Fractional T1 services, and converts to V.35, EIA-530, and 10Base-T Ethernet

Network Termination Unit

Patton 2720 T1 and Fractional T1 CSU/DSU

One of the smallest and most economical CSU/DSUs available, the Model 2720 is loaded with features usually found in more expensive units: flexible clocking modes, AMI/B8ZS coding, diagnostics, and nx56/nx64 rates—all easily configurable through switches or VT-100 console.

The Model 2720 series terminates T1/FT1 services for all nx56/nx64 kbps to 1.544 Mbps rates and connects to the customer's router, FRAD, CODEC, and LAN with V.35, RS-530, or 10Base-T interfaces. Front panel LEDs and switches allow for instant diagnostics and service monitoring. Use the VT-100 console port for complete command and control over your T1 termination. AC or DC power options make installing the Model 2720 into your network infrastructure a snap.

The wide variety of features, compact size, and low price make Patton's T1 CSU/DSUs the right solution for your next network challenge. For more information, visit us at www.patton.com.

Connect to Any Terminal Interface

Smooth clock V.35 and EIA-530 connection, and 10Base-T Ethernet

VT-100 Control Port With Full DSO Mapping

nx56/nx64 channel selection from 64 kbps to 1.544 Mbps

Full Diagnostics Included

V.52 511 BERT, 2047, QRSS, V.54 loopbacks, and CO loop-up/loop-down diagnostics

Eliminates Routers

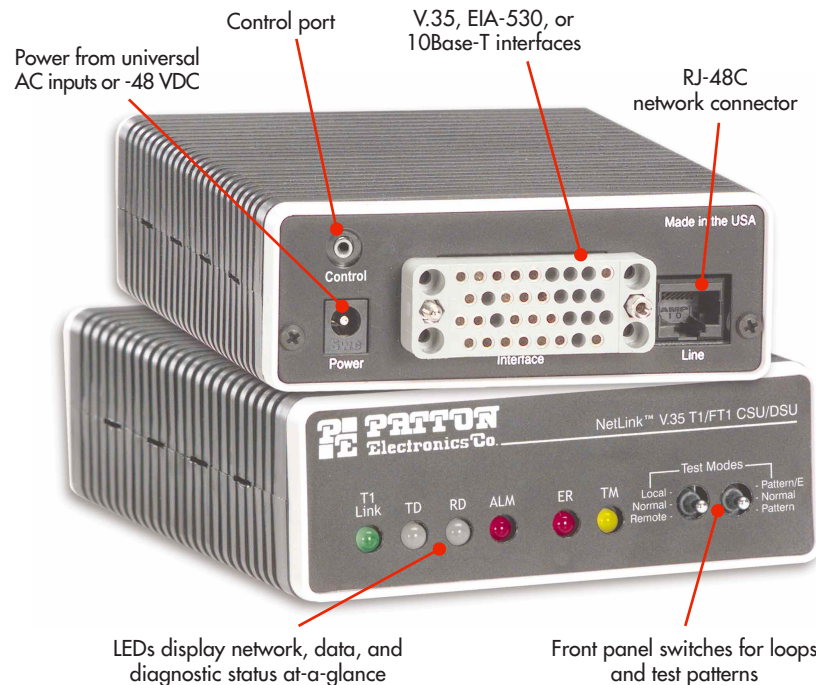
Bridge Ethernet across the WAN using industry standard PPP/BCP

Standalone or Rack Solutions

Available to suit your needs: small desktop unit, or high density rack cards

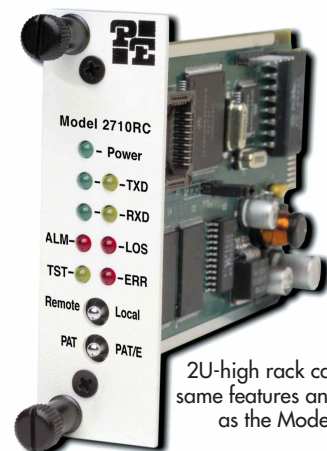
Power it Anywhere

Universal input AC (90-240V), and -48 VDC power supply options



Model 2720

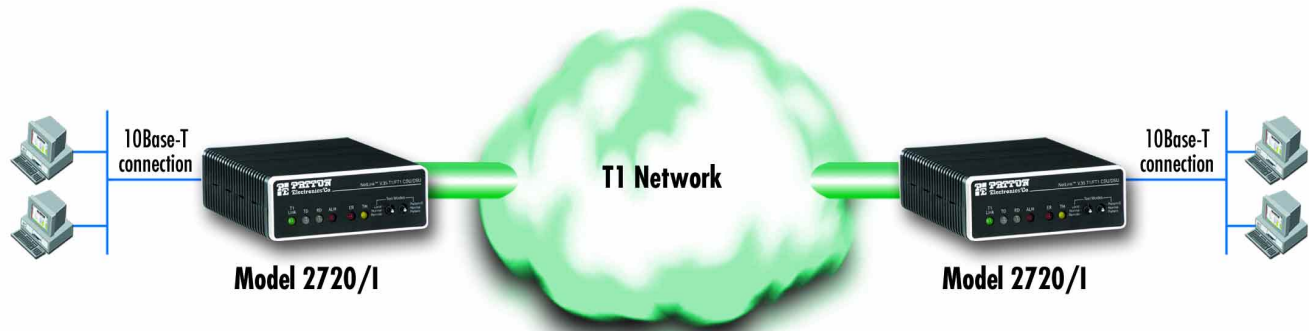
PATTON
Electronics Co.



Model 2710RC

Application—LAN-to-LAN without a router

Connecting a remote LAN to headquarters has never been easier—or more economical! Place one Model 2720/I at each LAN location, use MAC and PPP/BCP bridging in the Model 2720s to provide seamless LAN-to-LAN connection over the wide-area T1 network.



Netlink T1/FT1 product family



	2720/C	2720/B	2720/I	2710RC/A/I	2710RC/B/B	2710RC/C/IA
DTE Interface	V.35	EIA-530	10Base-T	V.35	EIA-530	10Base-T
Power Supplies	UI (100–240 VAC) or -48 VDC			AC or DC rack power supplies		
Dimensions	1.50 H x 4.17 W x 5.84 D inch (3.84 H x 10.6 W x 14.84 D cm)			3.0 H x 0.83 W x 7.84 D inch (7.6 H x 2.1 W x 19.0 D cm)		
Weight	1.0 lbs (0.45 kg)			0.31 lbs (0.14 kg)		
Line Rate	1.544 Mbps (T1/FT1)					
Line Connector	RJ-48C (100 ohms)					
Line Coding	AMI or B8ZS					
Line Framing	D4 or ESF					
DSO Start Position	Any position, contiguous/non-contiguous mapping when configured via VT-100 console					
Line Build-Out	Receiver: automatic. Transmitter: 0, -7.5, -15, -22.5 dB, DSX-1 level					
DTE Interface	V.35 (M/34 female), EIA-530 (DB-25 female), or 10Base-T Ethernet (RJ-45 female)					
DTE Rates	nx56/nx64 kbps (V.35, EIA-530); nx56/nx64 kbps to 10Base-T (10 Mbps)					
Clocking	Smooth clocking—internal, external, or network					
Diagnostics	V.54 local/remote loop; responds to CO-initiated loop-up and loop-down codes. ESF line-loop and payload FDL messages. Diagnostics patterns: 511, 2047, and QRSS					
Compliance	FCC Part 15 Class A and Part 68. AT&T 62411, TR54016, ANSI T1.403					
Temperature/Humidity	32 to 122°F (0 to 50°C)/5 to 90% relative humidity, non-condensing					



7622 Rickenbacker Drive
 Gaithersburg, MD 20879 USA
 Phone +1-301/975-1000
 Fax +1-301/869-9293
 E-mail marketing@patton.com
 URL www.patton.com

Free Manuals Download Website

<http://myh66.com>

<http://usermanuals.us>

<http://www.somanuals.com>

<http://www.4manuals.cc>

<http://www.manual-lib.com>

<http://www.404manual.com>

<http://www.luxmanual.com>

<http://aubethermostatmanual.com>

Golf course search by state

<http://golfingnear.com>

Email search by domain

<http://emailbydomain.com>

Auto manuals search

<http://auto.somanuals.com>

TV manuals search

<http://tv.somanuals.com>