

NETLINK™ ACCESS PRODUCTS

The Patton 2960 Remote Access Server provides 16 to 60 dial-up ports each supporting V.92, V.90, V.44, K56Flex™, V.34+, and ISDN connections.

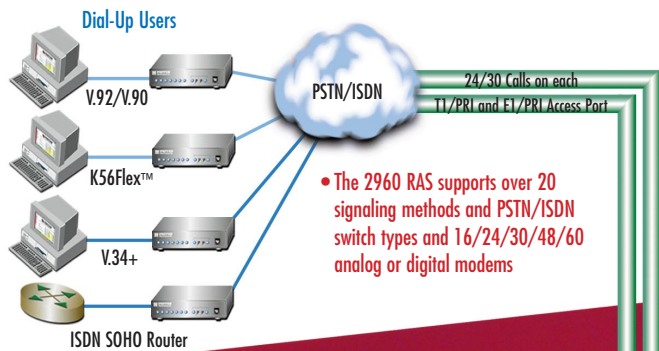
Remote Access Server

Patton 2960 Dual T1/E1/PRI RAS

The Patton 2960 RAS is an ideal solution for the established Internet Service Provider that is expanding into a new calling area. By integrating capabilities into our 2960 Remote Access Server, the ISP lowers expansion costs and produces revenue immediately.

The 2960 RAS integrates up to 60 analog and digital modems, RADIUS Accounting and Authentication Client, a 10/100 Ethernet port, IP Routing, Frame Relay forwarding, and four built-in E1/T1 CSU/DSUs. It connects 16 to 60 dial-in-modems with V.92, V.44, V.90, K56Flex, V.34+ or ISDN users to the Internet, IP LANs, or Corporate Intranets. Load-sharing dual-redundant power supplies and integrated Web-based SNMP/HTTP management system capabilities make our 2960 RAS the most reliable and easiest to use RAS in the business! Need additional details? Visit us at www.patton.com.

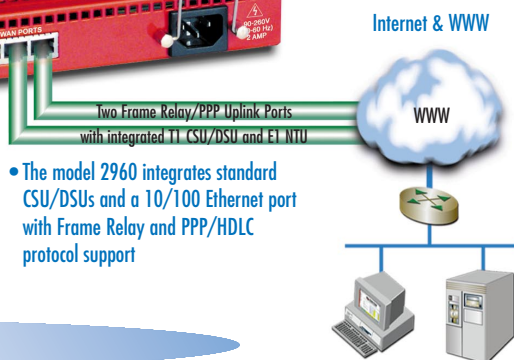
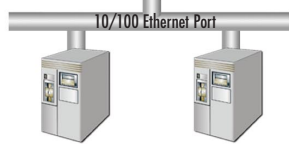
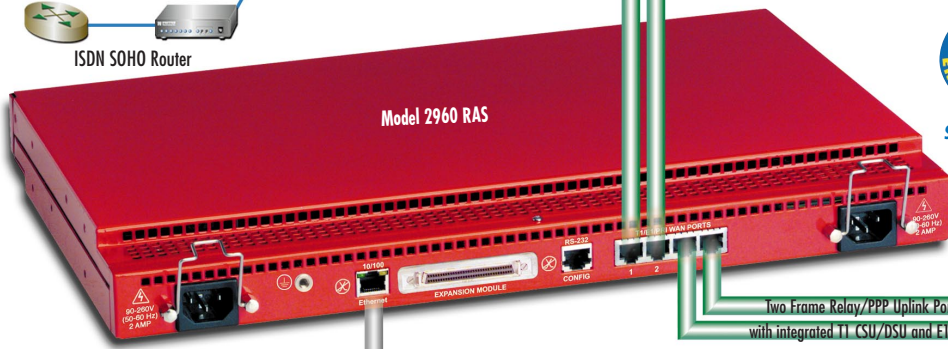
- 16, 24, 30, 48, or 60 ports in a 1U-High Platform
 - Model 2960 uses the latest technology to achieve the highest densities
- Dynamic Analog/Digital Modems
 - All modems (V.92, V.44, V.90, K56Flex™, V.34+ and ISDN) are dynamically supported on dedicated DSPs
- Frame Relay & PPP Network Uplinks
 - Dual Network uplinks to a FR switch or IP router for high speed trunking
- SNMP/HTTP Network Management
 - Use a standard Web Browser, HP OpenView™ or simple PCs to configure and manage the 2960
- Multilink and Multichassis Support
 - Combine multiple dial-in sessions, even across boxes, to deliver the highest performance
- Dial-out/Callback/Dial-on-demand
 - Use the Model 2960 as a dial-out modem pool and support advanced dial-out applications
- Dual-Redundant Power Supplies
 - Provide non-stop access with our high MTBF 2960. No fans—Convection Cooled and stackable



PATTON



Special Rates Available
Call for Details



The model 2960 integrates standard CSU/DSUs and a 10/100 Ethernet port with Frame Relay and PPP/HDLC protocol support

2960 Remote Access Server Configuration in a Remote POP

Why use our Model 2960 RAS?

From HTTP management to dual-redundant power supplies to FR/PPP uplink integration, the NetLink Model 2960 provides an all-in-one package for the expanding ISP. Featuring:

- Integrated T1/E1 uplink ports with Frame Relay and PPP.
- Convection-cooled system. There are no fans or moving parts to fail.
- The lowest cost-of-ownership for an ISP or Telco building a Remote POP for 16/24/30/48/60 ports.

The Model 2960 requires 1/2 the space of existing RAS solutions. With greater reliability and a smaller package than any of its competitors, the Model 2960 is the cost leader in the industry.

2960 Competitive Positioning

	Patton 2960	Lucent MAX 4000	Lucent PM3
Base Features	Number of V.90/V.92 calls	16/24/30/48/60	48/60 (NO V.92)
	T1/E1/PRI ports	2	2
	Backhaul/Uplink ports	2	2
Key Selling Points	Self Cooling	YES	NO
	100Base-T Ethernet ports	YES	NO
	Built-in HTTP/WEB Mgmt	YES	NO
	Dual Redundant Power	YES	Add'l SSS
	Tech Support	FREE	Add'l SSS
	Software Upgrades	FREE	Add'l SSS
	Rack Height	1U	2U

NetLink RAS Product Family



Model 2960



Model 2996



Model 3120

Model Number	2960/16	2960/24	2960/30	2960/48	2960/60	2996/96	2996/120	3120/48	3120/60	3120/96	3120/120
Number of Connections	16	24	30	48	60	96/120 Calls — 4 T1's or 4 E1's		48	60	96	120
Power Supplies	Dual Redundant (Fixed) AC					Dual Redundant (Fixed) AC		Dual-Redundant (Hot Swap) AC or DC			
Ethernet Ports	One 10/100Base-T					One 10/100Base-T		Two 10/100Base-T			
WAN Ports	Four					Four		Four			
Modem Modulations	V.92, V.44, V.90, K56Flex™, V.34 Annex 12, V.34, V.32bis, V.32, V.23, V.22, V.22bis, V.21, Bell 212A, Bell 202, Bell 103, EIA-PN-2330, V.8, V.8bis, Sync/Async receiver/transmitter for V.14, V.42/V.42bis error correction & compression.										
PSTN Signaling	E1 Primary Rate interface (Q.931), E1 MFR2 (R2), T1 Primary Rate Interface, T1 Robbed bit with Loop/Ground Start or E&M Wink, E&M Immed, Taiwan R1 and Drop & Insert										
Management Services	HTTP, SNMP, TELNET Dial-in and Ethernet or RS-232 console port, SYSLOG client, Remote software upgrade via FTP, User configurable login prompts and banners										
Authentication	RADIUS, PAP/CHAP, Username/Password, and Static Users Database (111 Entries)										
Software Upgrades	Achieved through Flash upgrades via FTP (upgrades available from www.patton.com)										
Protocol Services	TCP/IP suite with extensive protocol statistics • ICMP/TFTP/FTP/RLOGIN/TELNET • Ethernet ARP, Proxy ARP and RARP protocols • Point-to-Point Protocol (PPP) • SLIP protocol • Van Jacobson TCP header compression PPP address and protocol compression • RADIUS authentication and accounting, with support for primary and secondary servers • RIP and RIPv2 • User configurable static routes • MultiLink PPP • Multi-chassis MultiLink • Layer 3 and Layer 4 IP Filtering • NFA5 • DNIS										
Dial-out Services	Dial-out with support for multi-link PPP • Single-line call-back • Remote authentication using PAP and CHAP and session time										



7622 Rickenbacker Drive
Gaithersburg, MD 20879 USA
Phone +1-301/975-1000
Fax +1-301/869-9293
E-mail marketing@patton.com
URL www.patton.com

Free Manuals Download Website

<http://myh66.com>

<http://usermanuals.us>

<http://www.somanuals.com>

<http://www.4manuals.cc>

<http://www.manual-lib.com>

<http://www.404manual.com>

<http://www.luxmanual.com>

<http://aubethermostatmanual.com>

Golf course search by state

<http://golfingnear.com>

Email search by domain

<http://emailbydomain.com>

Auto manuals search

<http://auto.somanuals.com>

TV manuals search

<http://tv.somanuals.com>