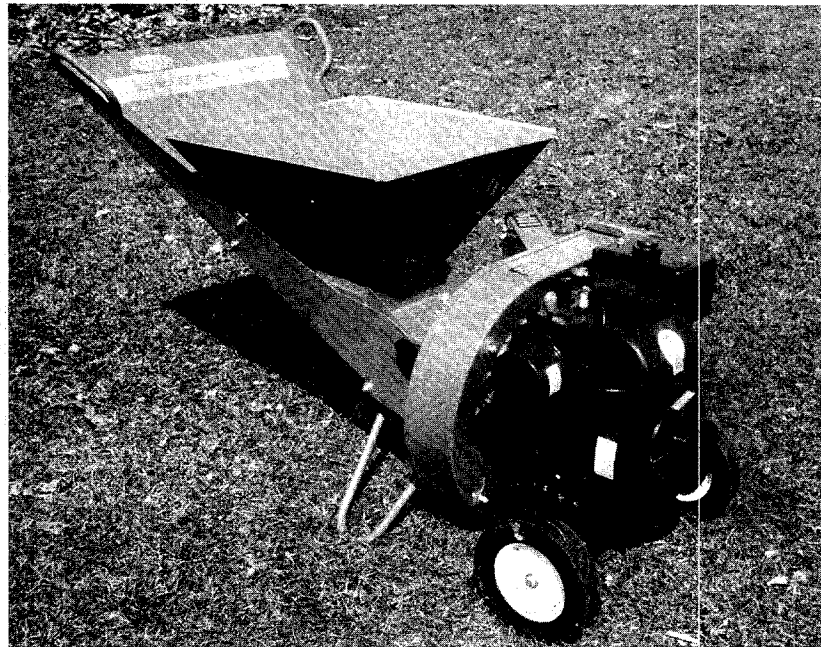


# Operating/Service Instructions

## POWER SHREDDER

Model No.

242-654



*Replacement  
Bag 764-126*

### WARRANTY

For one year from date of purchase, MTD Products Inc will replace for the original purchaser, free of charge, F.O.B. factory or authorized service firm, any part or parts found to be defective in material or workmanship. All transportation charges on parts submitted for replacement under this warranty must be paid by the purchaser. This warranty does not include replacement of parts which become inoperative through misuse, excessive use, accident, neglect, improper maintenance or alterations by unauthorized persons. This warranty does not include the engine, motor, battery, battery charger or any component parts thereof. For service on these units refer to the applicable manufacturer's warranty.

The above warranty will apply only to the original owner and will be effective only if the warranty card has been properly processed. It will not apply where the unit has been used commercially.

Warranty service is available through your local authorized service dealer or distributor. **UNDER NO CIRCUMSTANCES WILL THE RETURN OF A COMPLETE UNIT BE ACCEPTED BY THE FACTORY UNLESS PRIOR WRITTEN PERMISSION HAS BEEN EXTENDED.**

# IMPORTANT

## SAFE OPERATION PRACTICES

1. Read the Operating and Service Instruction Manual carefully. Be thoroughly familiar with the controls and proper use of equipment.
2. Never allow children to operate a power shredder.
3. Keep the area of operation clear of all persons, particularly small children and pets.
4. Check fuel before starting engine. Do not fill gasoline tank indoors, when engine is running, or while engine is still hot. Wipe off any spilled gasoline before starting engine.
5. Do not change engine governor settings or over-speed engine.
6. Do not put hands near rotating parts. Keep clear of discharge opening at all times.
7. If the equipment should start to vibrate abnormally, stop the engine (motor) and check immediately for the cause. Vibration is generally a warning of trouble.
8. When cleaning, repairing or inspecting, make certain blade and all moving parts have stopped. Disconnect spark plug wire and keep wire away from plug to prevent accidental starting.
9. Shut engine (motor) off and wait until blade comes to a complete stop before unlogging chute.
10. Check blade and engine mounting bolts at frequent intervals for proper tightness.
11. Keep all nuts, bolts, and screws tight to be sure equipment is in safe working condition.
12. Never store equipment with gasoline in the tank inside of a building where fumes may reach an open flame or spark. Allow engine to cool before storing in any enclosure.
13. To reduce fire hazard keep free of grass, leaves or excessive grease.

### OPERATION

1. Service engine with gas and oil. See engine manual packed with shredder for complete instructions for the care and maintenance of engine. READ DIRECTIONS CAREFULLY.
2. When ready to start engine, place throttle control lever in START position and start engine in accordance with instructions in engine manual. After engine starts, move throttle control lever to desired engine speed. The engine is stopped by placing control lever in the STOP position.

### CAUTION:

The manufacturer recommends that the operator wear safety glasses or some other suitable eye protection as it is possible for chips to be ejected out of the inlet openings while feeding material.

### USING YOUR SHREDDER

Your shredder is designed for safe, efficient, operation. CARE, OF COURSE, MUST BE EXERCISED THAT HANDS ARE KEPT AWAY FROM ALL OPENINGS.

Your shredder guide extension is adjustable. It may be adjusted to desired height by loosening the hand knob as shown in figure 1.

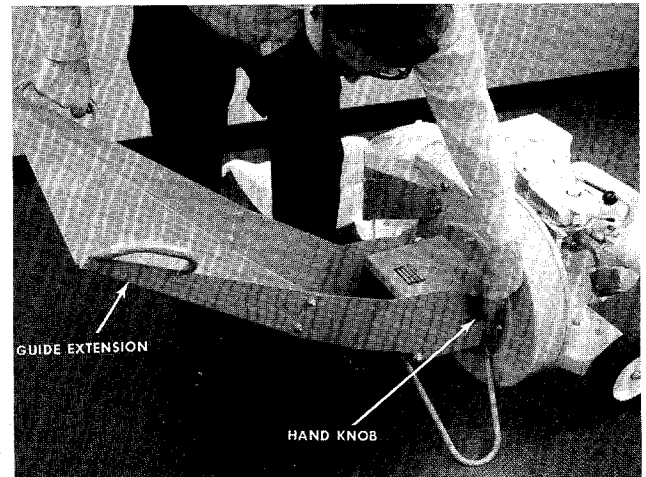


FIGURE 1. GUIDE EXTENSION ADJUSTMENT

Feed the material so that it slides down the guide extension. See figure 2.

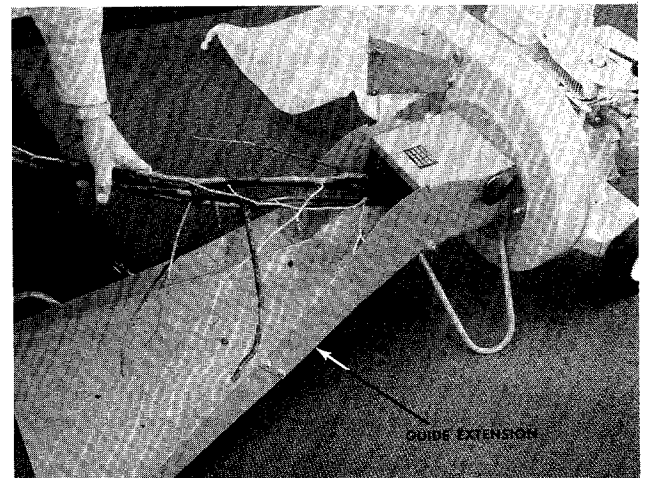
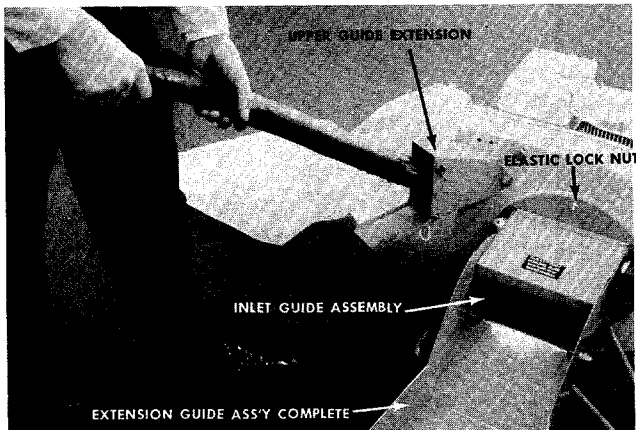


FIGURE 2. FEEDING MATERIAL INTO GUIDE

## EXTENSION

A steady flow of material provides the best results. Bulky material, such as stalks or heavy branches, should be fed into the upper guide extension. See figure 3.



**FIGURE 3. FEEDING MATERIAL INTO UPPER GUIDE  
EXTENSION**

It is possible to feed too fast and you will find it will take some experimenting with feeding rates to get the most out of your shredder without stalling the engine.

Under certain conditions, it may be necessary to push the materials into the inlet guide assembly. When this becomes necessary, use a small diameter stick—NOT YOUR HANDS. The stick should be of a size that will be ground up if it gets into the impeller assembly.

The discharge chute will direct the shredded material into a pile or a container. **NOTE:** Your shredder is equipped with a nylon bag with drawstring lock. This will accommodate a perforated disposable plastic bag. **CAUTION:** Keep clear of the chute area since the shredded material comes out with considerable velocity. Always stop engine and disconnect spark plug wire when changing bags.

## MAINTENANCE

**CAUTION:** Always stop engine and disconnect spark plug wire before doing any maintenance.

**Cutting Blade**—The blade may easily be removed for grinding or replacement as follows:

1. Remove guide extension assembly by removing four elastic locknuts. See figure 3.
2. Remove bolt (Ref. No. 54), lockwasher (Ref. No. 55) and flat washer (Ref. No. 20) holding blade (Ref. No. 56) to engine crankshaft. See figure 4.
3. **NOTE:** Blade is reversible and can be assembled to crankshaft with either side showing.

When sharpening blade, follow the original angle of grind as a guide. It is extremely important that each cutting edge receives an equal amount of grinding to prevent an unbalanced blade. An unbalanced blade will cause excessive vibration when rotating at high speeds and may cause damage to the unit. Upon reassembly, make certain all parts are assembled properly and tightened securely.

## LUBRICATION

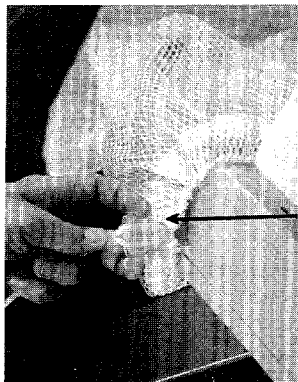
**WHEELS**—Wheel bearings are of lifetime Fortiflex. They require no lubrication.

**ENGINE**—Follow engine manual for lubrication instructions.

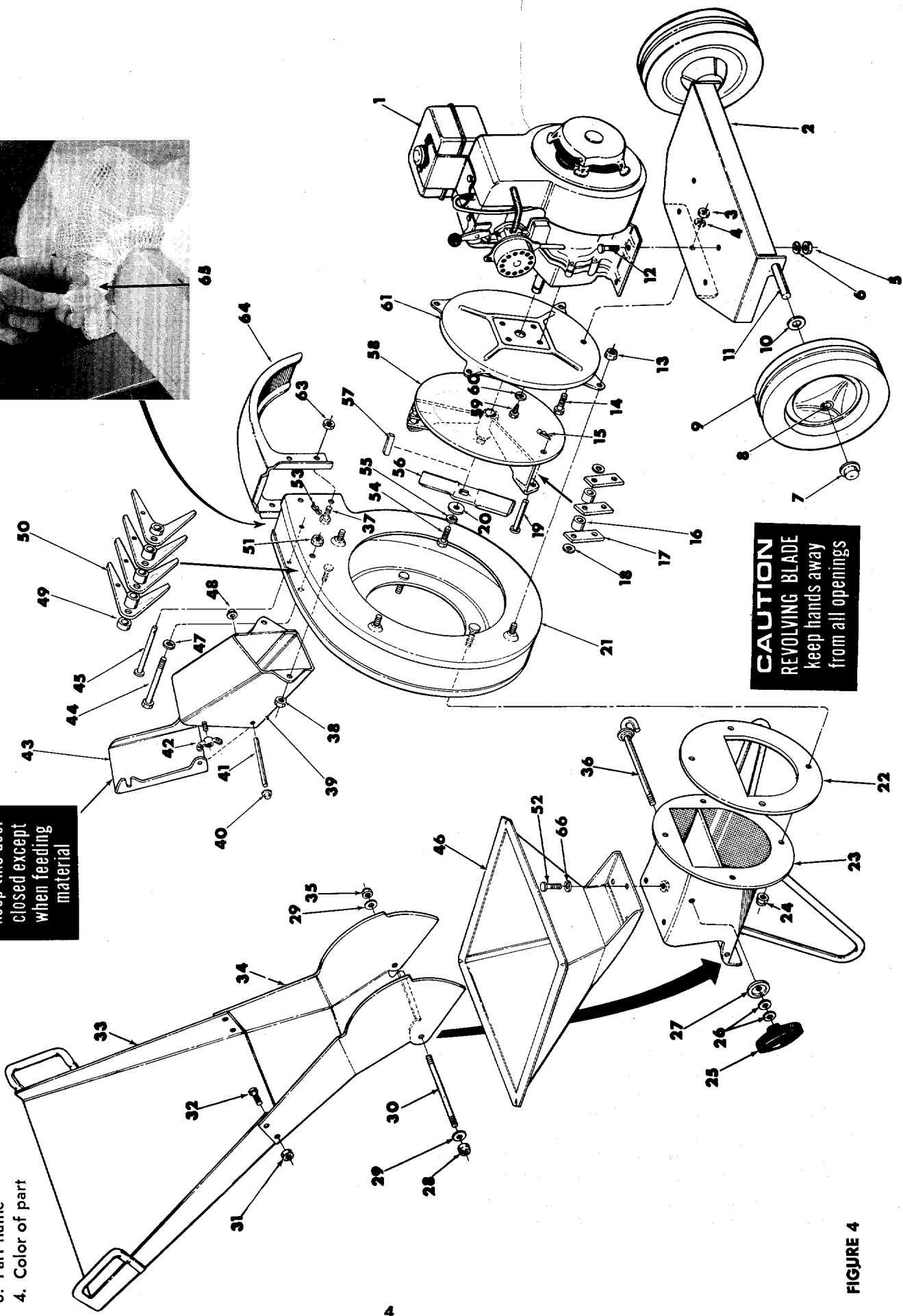
When ordering parts give the following information:

1. Model number
2. Part number
3. Part name
4. Color of part

242-654



keep this door closed except when feeding material



**CAUTION**  
REVOLVING BLADE  
keep hands away  
from all openings

FIGURE 4


**PARTS LIST FOR MODEL 242-654 POWER SHREDDER**

REF. NO.	PART NO. CODE	DESCRIPTION	REF. NO.	PART NO. CODE	DESCRIPTION
1	---	Engine	33	11460-437	Guide Extension Assembly
2	11464-437	Engine Mounting Plate	34	11472-437	Guide Extension
3	712-123	Hex Nut 5/16-24 Thd.*	35	712-429	Elastic Stop Nut 5/16-18 Thd.
4	736-119	Spring Lockwasher 5/16" Scr.*	36	11479	Clamp Rod Assembly
5	712-123	Hex Nut 5/16-24 Thd.*	37	710-289	Hex Hd. Cap Scr. 1/4-20 x 1/2" Lg.*
6	736-119	Spring Lock Washer 5/16" Scr.*	38	712-107	Lock Nut 1/4-20 Thd.
7	726-221	Push Cap	39	11477-437	Upper Guide Extension Assembly
8	305-7006	Fortiflex Bearing	40	726-111	Palnut 3/16" Dia.
9	---	Wheel Assembly Complete	41	11478	Hinge Pin
10	736-100	Flat Washer 1/2" I.D.	42	712-109	Wing Nut Elastic 1/4-20 Thd.
11	11475	Axle	43	11476-437	Door-Upper Guide Extension
12	710-237	Hex Hd. Cap Scr. 5/16-24 x 5/8" Lg.*	44	710-465	Hex Hd. Cap Screw 1/2-20 x 4 1/2" Lg.
13	712-429	Elastic Stop Nut 5/16-18 Thd.	45	711-580	Clevis Pin
14	710-237	Hex Hd. Cap Scr. 5/16-24 x 5/8" Lg.*	46	11481-437	Hopper Ass'y.
15	714-507	Cotter Pin 3/32" Dia. x 3/4" Lg.*	47	736-921	Lockwasher 1/2" Screw
16	711-564	Flail Spacer 23/32" Lg.	48	726-111	Palnut 3/16" Dia.
17	11459	Flail	49	711-579	Flail Spacer 7/32" Lg.
18	736-192	Flat Washer 17/32 I.D. x 15/16 O.D. x .09 Thk.	50	11455	Cutting Finger
19	711-578	Clevis Pin 1/2" Dia. x 3" Lg.	51	712-922	Hex Jam Nut 1/2-20 Thd.
20	736-235	Flat Washer .406 I.D. x 1 1/4" O.D.	52	710-621	Hex Hd. Cap Scr. 5/16-18 x 1/2" Lg.*
21	11474-437	Flail Housing Assembly-Complete	53	714-507	Cotter Pin 3/32" Dia. x 3/4" Lg.
22	11454-437	Back-up Plate	54	710-331	Hex Hd. Cap Screw 3/8-24 x 2 1/4" Lg. Heat Treated
23	11467-437	Inlet Guide Assembly	55	736-217	Spring Lockwasher 3/8" Heavy Duty
24	712-429	Elastic Stop Nut 5/16-18 Thd.	56	11458	Blade
25	305-9966	Knob Assembly	57	714-114	Square Key 1/4" x 1/4" x 2" Lg.
26	736-264	Flat Washers 1/2" Dia.	58	11473-437	Impeller Assembly
27	11480	Stop Washer	59	710-237	Hex Hd. Cap Scr. 5/16-24 x 5/8" Lg.*
28	712-429	Elastic Stop Nut 5/16-18 Thd.	60	736-119	Spring Lockwasher 5/16" Scr.*
29	736-264	Flat Washer-5/16" Scr.*	61	11452-437	Hopper to Engine Mounting Plate
30	711-566	Chute Pivot Rod	63	712-107	Locknut 1/4-20 Thd.
31	712-107	Lock Nut 1/4-20 Thd.	64	11465-437	Chute Deflector
32	710-289	Hex Hd. Cap Scr. 1/4-20 x 1/2" Lg.*	65	764-126	Nylon Bag w/Drain String and Lock
			66	736-119	Spring Lockwasher 5/16" Scr.*

\*For faster service obtain standard nuts, bolts and washers locally. If these items cannot be obtained locally, order by part number and size as shown on parts list.

(437 - Flag Red Finish) When ordering parts if color or finish is important, use the appropriate color code shown at left. (e.g. Flag Red Finish - 11460-437)

Find It Fast  
In The  
**"Yellow Pages"**



The engine is not under warranty by the shredder manufacturer.  
If repairs or service is needed on the engine, please contact your nearest authorized engine service outlet. Check the "Yellow Pages" of your telephone book under "Engines - Gasoline."

# PARTS INFORMATION

## MOWER, TILLER, SNOW THROWER AND TRACTOR PARTS

Mower, tiller, snow thrower and tractor parts are available through the authorized service firms listed below. All orders should specify the model number of your unit, parts numbers, description of parts and the quantity of each part required.

**A 1 Engine & Mower Co.**  
327 East 9th Street  
Salt Lake City, Utah 84102

**American Electric Ignition Co.**  
124 N. W. 8th Street  
Oklahoma City, Oklahoma 73102

**Auto Electric & Carburetor Co.**  
2625 4th Avenue, S.  
P. O. Box 1948  
Birmingham, Alabama 35233

**Automotive Equipment Service Co.**  
3117 Holmes Street  
Kansas City, Missouri 64109

**Bailey's Rebuild Inc.**  
1325 E. Madison Street  
Seattle, Washington 98102

**Brown Equipment Distributor Inc.**  
110 Beech Street  
Corydon, Indiana 47112

**Bullard Supply**  
2409 Commerce Street  
Houston, Texas 77003

**Center Supply Company**  
6867 New Hampshire Avenue  
Takoma Park, Maryland 20012

**R. T. Clapp Co.**  
2016 Magnolia Ave., N. E.  
Knoxville, Tennessee 37917

**W. B. Clements**  
400 Salem Avenue  
Roanoke, Virginia 24016

**Morton B. Collins Co.**  
300 Birnie Avenue  
Springfield, Massachusetts 01107

**Dixie Sales Company**  
P. O. Box 1408  
327 Battleground Avenue  
Greensboro, North Carolina 27402

**East Point Cycle & Key Shop**  
1617 Whiteway  
East Point, Georgia 30044

**Gamble Distributors**  
West End Avenue  
Carthage, New York 13619

**Garden Equipment Co., Inc.**  
6600 Cherry Avenue  
Long Beach, California 90805

**Henzler, Inc.**  
2015 Lemay Ferry Road  
St. Louis, Missouri 63125

**Frank E. Ives & Son**  
1101 Lincoln Avenue  
Prospect Park, Pennsylvania 19076

**J. W. Jewett Co.**  
981 Folsom Street  
San Francisco, California 94107

**Kenton Supply**  
8216 North Denver Avenue  
Portland, Oregon 97217

**Kimber's Inc.**  
615 W. Genesee Street  
Syracuse, New York 13204

**Marr Brothers**  
423 E. Jefferson  
Dallas, Texas 75203

**Mathews Auto Electric Co.**  
420 East 2nd Street  
Tulsa, Oklahoma 74120

**McClure Lawn & Garden Supply**  
1114 Lexington Avenue  
Mansfield, Ohio 44907

**Memphis Cycle & Supply Co.**  
421 Monroe Avenue  
Memphis, Tennessee 38103

## ENGINE PARTS AND SERVICE

Engine parts and service should be handled by your nearest authorized engine service firm. Check the yellow pages of your telephone directory under the listing *Engines - Gasoline*, Briggs and Stratton or Tecumseh Lauson - Power Products.

**Moz-All of Florida, Inc.**  
365 Greco Avenue  
Coral Gables, Florida 33146

**National Central, Div. of Joe Sterling, Inc.**  
Drawer "D" 687 Seville Rd.  
Wadsworth, Ohio 44281

**Power Equipment Distributor**  
36463 So. Gratiot Avenue  
Mt. Clemens, Michigan 48043

**Parts & Sales Inc.**  
335 West St. Charles Road  
Villa Park, Illinois 60181

**Power Lawn & Garden Equip. Co.**  
2551-2571 J. F. Kennedy Road  
Dubuque, Iowa 52001

**Raub Supply Company**  
James & Mulberry Sts.  
Lancaster, Pennsylvania 17604

**Radco Distributors**  
2403 Market Street  
P. O. Box 3216  
Jacksonville, Florida 32206

**Richmond Battery & Ignition**  
P. O. Box 25369 - 957 Myers St.  
Richmond, Virginia 23260

**Smith Hardware Company**  
515 N. George Street  
Goldsboro, North Carolina 27530

**South Denver Lawn Equip. Co.**  
527 West Evans  
Denver, Colorado 80223

**Suhren Engine**  
8330 Earhart Blvd.  
New Orleans, Louisiana 70118

**Sutton's Lawn Mower Shop**  
Route 4, Box 343  
North Little Rock, Arkansas 72117

**Warner Equipment**  
7520 Lyndale Avenue, So.  
Minneapolis, Minnesota 55423

## Free Manuals Download Website

<http://myh66.com>

<http://usermanuals.us>

<http://www.somanuals.com>

<http://www.4manuals.cc>

<http://www.manual-lib.com>

<http://www.404manual.com>

<http://www.luxmanual.com>

<http://aubethermostatmanual.com>

Golf course search by state

<http://golfingnear.com>

Email search by domain

<http://emailbydomain.com>

Auto manuals search

<http://auto.somanuals.com>

TV manuals search

<http://tv.somanuals.com>