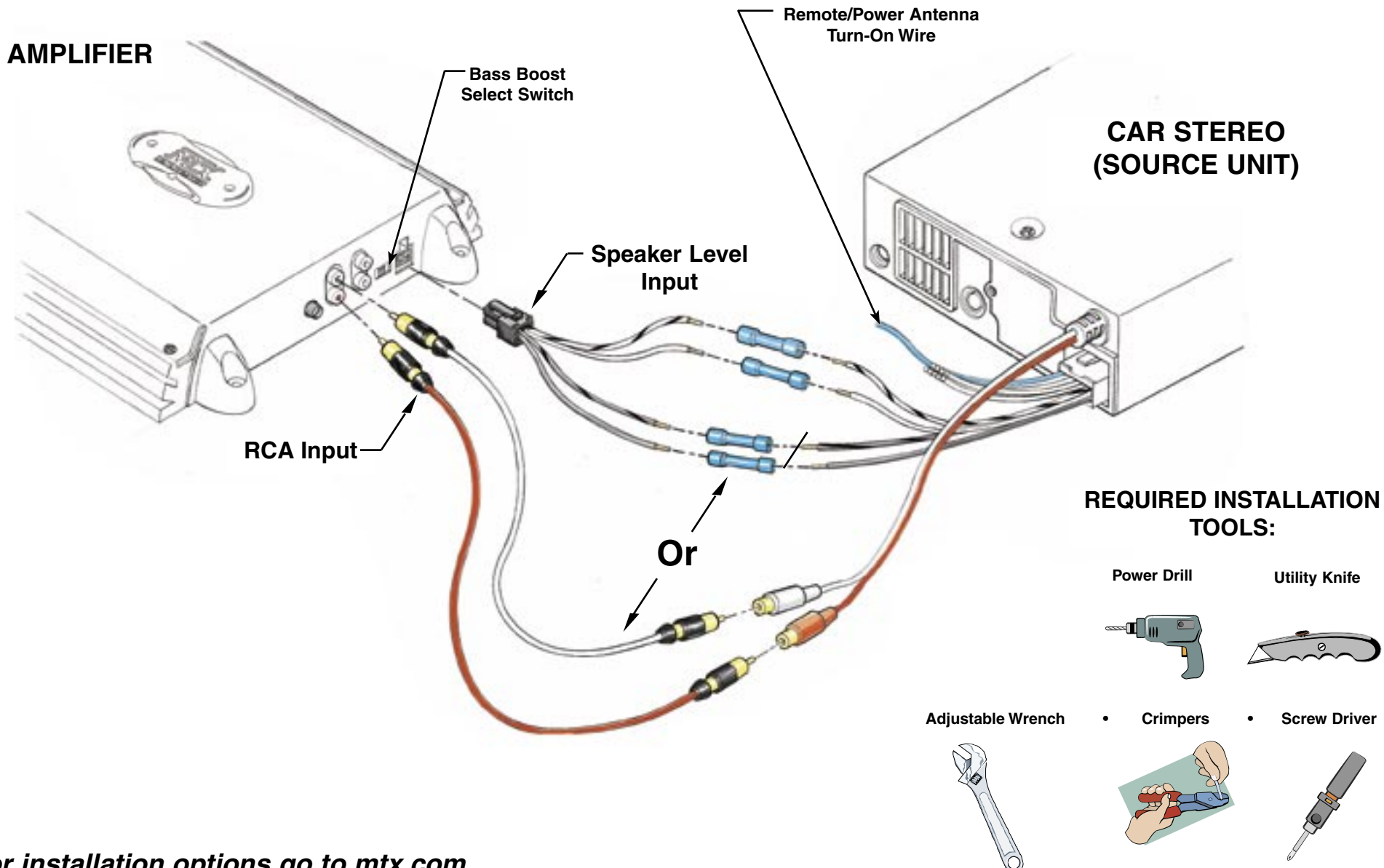




# THUNDER 251D / THUNDER 311D

## Amplifier Input Connections



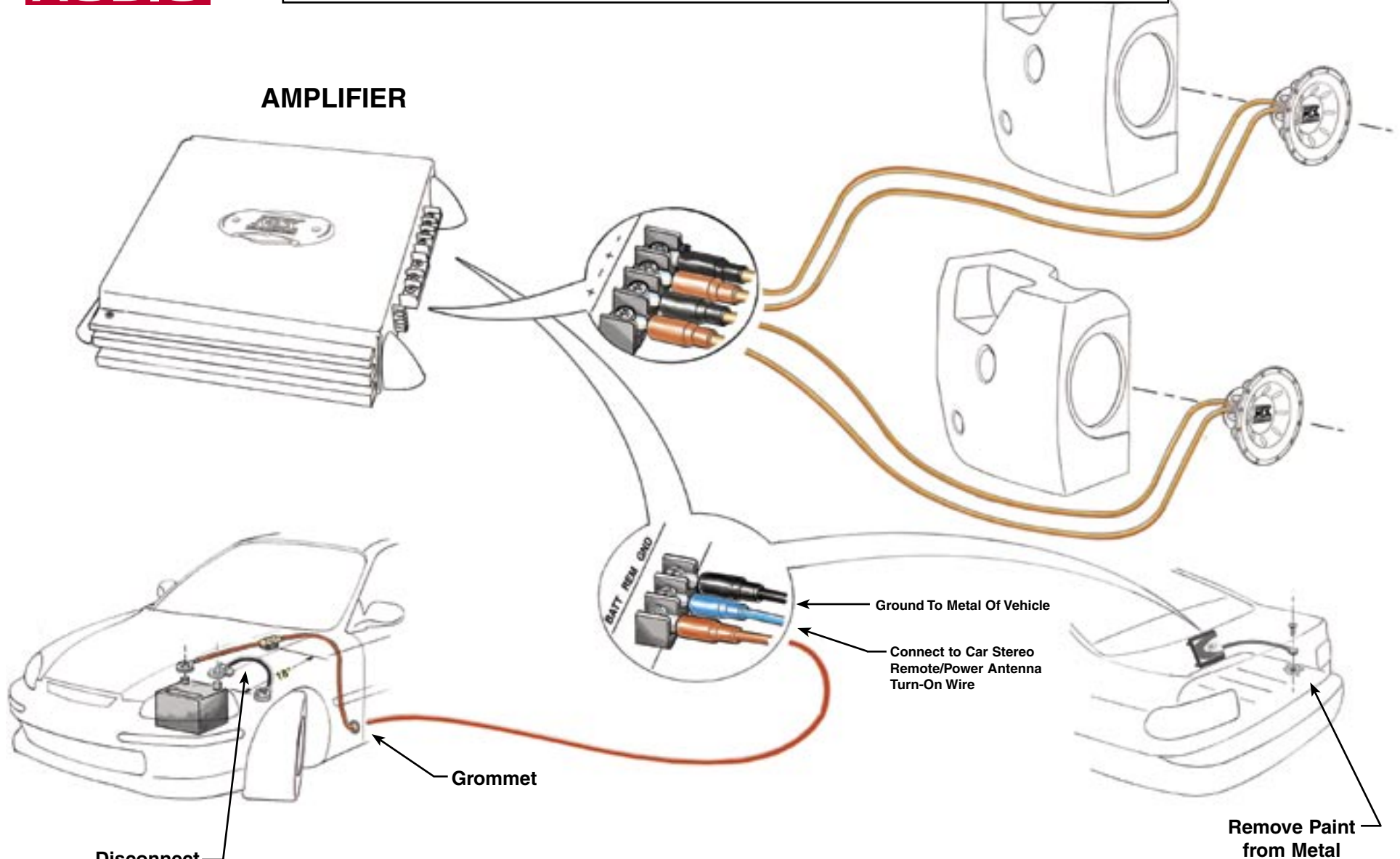
For installation options go to [mtx.com](http://mtx.com)

Part #: NDM225



# THUNDER 251D / THUNDER 311D Amplifier Output Connections

AMPLIFIER



Disconnect  
Battery Negative (-) Cable  
Prior to Installing Amplifier

Grommet

Ground To Metal Of Vehicle

Connect to Car Stereo  
Remote/Power Antenna  
Turn-On Wire

Remove Paint  
from Metal

**Minimum Wire Size:**  
Power: 10 AWG. Ground: 10 AWG.

For installation options go to [mtx.com](http://mtx.com)

## Free Manuals Download Website

<http://myh66.com>

<http://usermanuals.us>

<http://www.somanuals.com>

<http://www.4manuals.cc>

<http://www.manual-lib.com>

<http://www.404manual.com>

<http://www.luxmanual.com>

<http://aubethermostatmanual.com>

Golf course search by state

<http://golfingnear.com>

Email search by domain

<http://emailbydomain.com>

Auto manuals search

<http://auto.somanuals.com>

TV manuals search

<http://tv.somanuals.com>