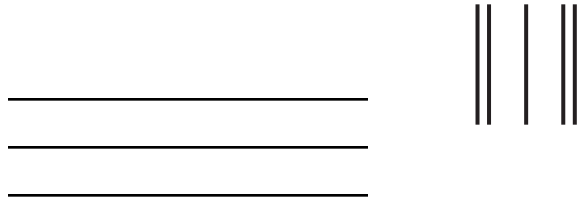
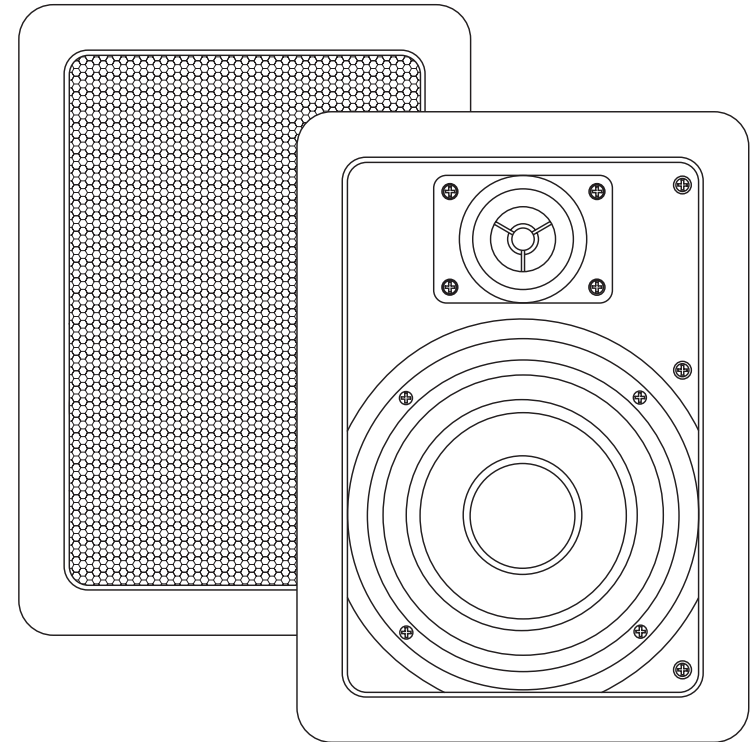


MTX Blueprint[®] series



FIRST
CLASS
STAMP
HERE

MTX
4545 E BASELINE RD
PHOENIX AZ 85040-6400

MODEL 520W, 620W, and 820W

~~IN-WALL LOUDSPEAKER~~

OWNERS MANUAL



CONGRATULATIONS

We appreciate your choice of MIX In-Wall Loudspeakers. Properly installed and operated, MIX In-Wall Loudspeakers should provide years of worry free listening pleasure. It's important that you follow each step in this guide carefully to insure proper installation. If you have any questions regarding MIX In-Wall Loudspeakers, please call us at 1-800-223-5266.

SPECIFICATIONS

	MODEL 520W	MODEL 620W	MODEL 820W
Frequency Response	53-20kHz	43-20kHz	33-20kHz
Impedance	8 Ohms	8 Ohms	8 Ohms
Nom. Power Handling	50 W ats	55 W ats	60 W ats
Peak Power Handling	160 W ats	180 W ats	200 W ats
Sensitivity	84dB@1W/1m	85dB@1W/1m	86dB@1W/1m
W oofer Diameter	5-1/4"	6-1/2"	8"
Tweeter	1" Soft Dome	1" Soft Dome	1" Soft Dome
Mounting Depth	2 1/2"	2 7/8"	3 1/2"

PAINTING YOUR MIX IN-WALLS

MIX In-Walls are designed to accept all types of interior and exterior paints. Spray or roller application should provide excellent results. A paint shield is included with all Blueprint Series In-Walls to protect the speakers during the painting process.

WARRANTY

MIX Blueprint Series In-Wall Loudspeakers are guaranteed against defects in parts and workmanship for a period of ten (10) years from the date of purchase. Speakers found defective during that period will be repaired by MIX without charge for parts.

This warranty is void if it is determined that unauthorized parties have attempted repairs or alterations of any nature. Before assuming that a defect is present in the loudspeakers, be certain that all associated equipment is operating properly.

If a defect is present, your authorized MIX dealer may be able to effect repairs. If not, you are responsible for providing transportation to the factory. Your MIX dealer can recommend the safest method of transportation. Proof of purchase is required when requesting service, so please retain your sales slip.

Specifications subject to change without notice.

(Cut out on dotted line and mail to address on reverse side.)

WARRANTY REGISTRATION

To register your purchase and insure your investment, please fill out and return this card

NAME _____ AGE _____

ADDRESS _____

MODEL PURCHASED: MODEL 520W 620W 820W

DATE PURCHASED _____

DEALER NAME _____

PURPOSE: Main Music Listening Background Video/surround

Other _____

ROOM(S) INSTALLED _____

INSTALLED BY _____

HOW DID YOU FIRST LEARN OF MIX IN-WALLS?

Dealer Friend Magazine Radio Newspaper Other

OTHER HOME AUDIO PRODUCTS FROM MTX

MTX offers a wide assortment of audio components. Ranging from in-ceiling speakers to amplifiers to accessories. Each component is value engineered and must meet strict quality control standards before it becomes part of the MIX product line.

Listed below you will find a sampling of components available from your authorized MIX dealer.

LPS-600

Speaker/Amplifier Selector

Accommodates up to 6 pair of speakers

Handles up to 250 watts/channel continuous (RMS)

Impedance Protection Circuitry

Accommodates up to 14 gauge wire

MODEL MP42

Multi-Purpose Loudspeaker

Two 4" Woofers, with 1/2" Balanced Dome Tweeter

50 Watts RMS/200 Watts Total Power Handling

Magnetically shielded, weather resistant

Sleek, Euro-style design

Available in white or black

12.6" x 4.8" x 4.9"

PS15

15" Powered Subwoofer System

200 Watt Class D Switching Power Amplifier

Infrared Remote Control for Volume Function

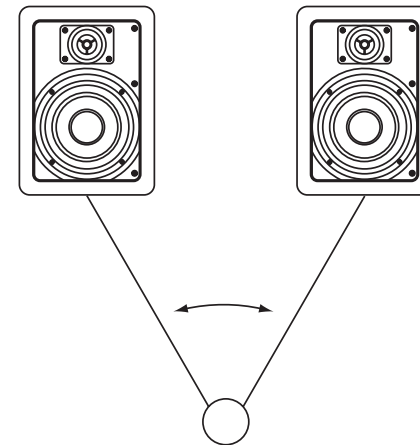
Magnetically Shielded, Downfiring Subwoofer in small enclosure

Signal Sensing Auto Turn On

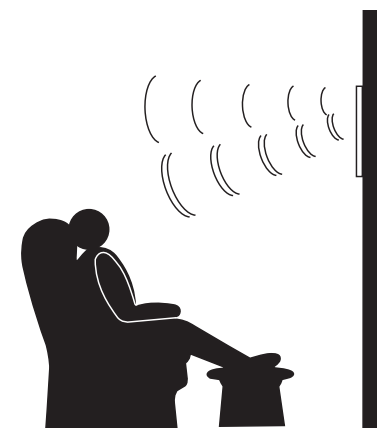
Red LED Clipping Indicator

LOUDSPEAKER PLACEMENT

Blueprint Series Loudspeakers are designed to work within any interior decorating scheme. They can be installed in virtually any location where flush mounting is possible. To maximize their sound performance however certain guidelines should be followed. For the best stereo reproduction the two loudspeakers should be placed an equal distance from your listening position and separated so that the angle between them, at the listening position, is



For best stereo imaging, we recommend that the units be placed so that the tweeters are as close as possible to the ear level of a seated listener. As this is not always possible in keeping with aesthetic design of a particular room, MODEL 520W, 620W, and 820W In-Wall Loudspeakers were designed with a pivoting tweeter which rotates to allow you to "aim" the high frequencies

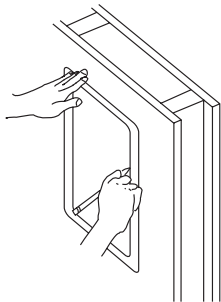


(Normal Dispersion

((Dispersion After Tweeter Adjustment

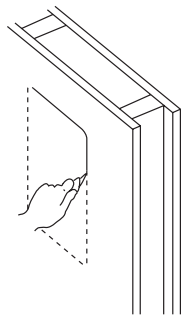
STEP 1

Using a stud finder (available at low cost at most hardware stores) or other accurate method, locate center point between two studs and mark. Using template provided, trace hole pattern on surface of wall. Placing a bubble level on either the horizontal or vertical guidelines of template will assist you in



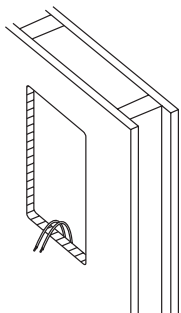
STEP 2

Using a sabre saw, keyhole saw or very sharp utility knife, cut hole in wall,



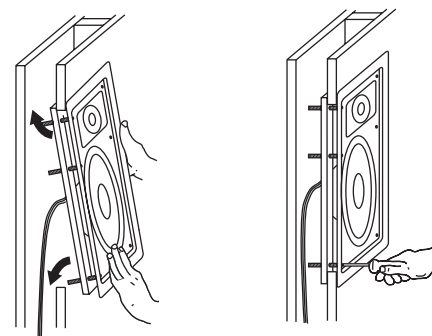
STEP 3

Run loudspeaker wires to sound source location. There are several methods you can use to accomplish wiring, depending on the construction characteristics of the room or house. You can add a professional touch to your installation by using a speaker terminal plate at the source location. Leave sufficient amount



STEP 4

Attach loudspeakers wires to speaker terminals, observing correct polarity (positive to positive and negative to negative), and position panel and frame assembly to hole as shown. Insert top of mounting frame into hole at top. By moving bottom of frame upwards, you should now be able to insert bottom of frame into hole at bottom. Be careful not to pinch loudspeaker wires in the process. Tighten long screws. Use a level during tightening to insure

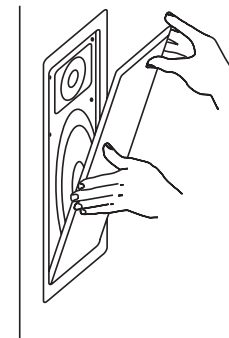


STEP 5

After speaker panel is secured tightly, test for sound.

STEP 6

When you are satisfied the speaker is operational, "aim" the tweeter, and affix grill. As grill is designed for a snug fit, you'll need to position one edge into slot first, and press or squeeze around perimeter of grill, while pushing leading edges into grill slot.



Free Manuals Download Website

<http://myh66.com>

<http://usermanuals.us>

<http://www.somanuals.com>

<http://www.4manuals.cc>

<http://www.manual-lib.com>

<http://www.404manual.com>

<http://www.luxmanual.com>

<http://aubethermostatmanual.com>

Golf course search by state

<http://golfingnear.com>

Email search by domain

<http://emailbydomain.com>

Auto manuals search

<http://auto.somanuals.com>

TV manuals search

<http://tv.somanuals.com>