

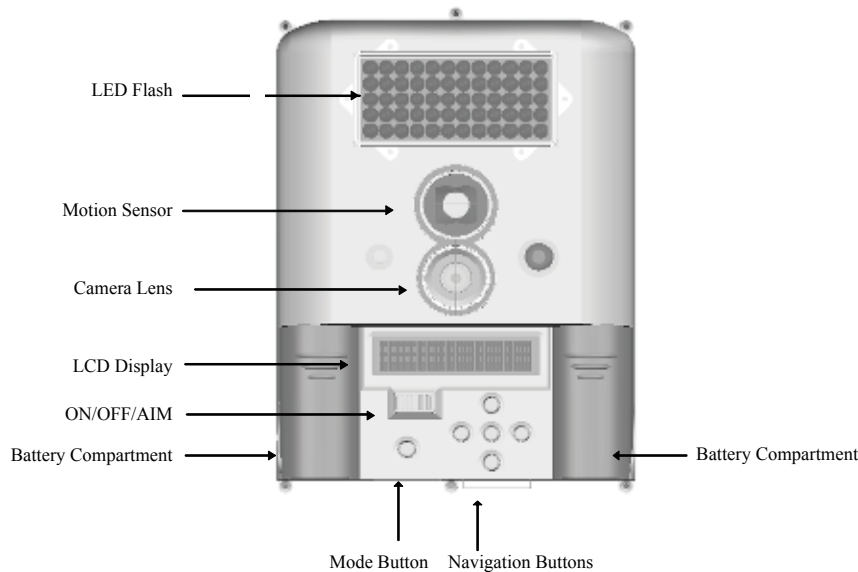


Instructions for I40XT GameSpy Digital Camera

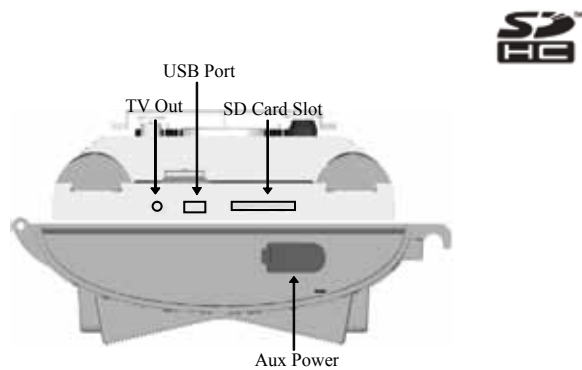
THANK YOU for your purchase of the Model I40XT GameSpy Digital Camera. Please read this booklet before using the unit. If you should have any questions about this product or any other Moultrie product, please contact us using the information on the back of this sheet. Please register your camera at www.moultriefeeders.com to activate your warranty.

I GAMESPY OVERVIEW

FRONT VIEW



BOTTOM VIEW



I GAMESPY OVERVIEW (cont.)

ON / OFF / AIM SWITCH

Used for turning On, turning Off, or Aiming the camera. When in AIM position the red LED light on the front of the camera will illuminate. To help find the center field of view for the camera, stand out in front of the camera and move left or right as you observe the AIM LED - as you walk away from direct center the LED light will be less bright. As you walk towards center the LED will appear brighter.

MODE BUTTON

The Mode Button selects the three modes of the camera -Auto, Camera Setup Menu, and Cellular Setup Menu. When either of the Menu modes are selected, the UP and DOWN buttons navigate through the menu options. The Mode Button is also used to wake-up the camera and turn on the display when the camera is in a power saving mode.

MENU NAVIGATION BUTTONS

The menu navigation buttons are used to navigate around the LCD display. UP/DOWN moves to the next menu option, OK selects the menu option to be changed. The LEFT/RIGHT buttons select the parameter field to be changed. When a parameter field is selected it will flash on the LCD display. When a parameter field is selected, the UP/DOWN buttons navigate through the options for the field and the OK button selects the parameter value indicated on the display. The OK button is also used to manually take a picture.

SD MEMORY CARD SLOT

Accepts up to a 16GB SD Card for photo storage. Note: An SD Card must be installed for the camera to operate.

USB PORT

Download still pictures and video onto your computer by connecting provided cable

POWERPANEL PORT

Accepts the Moultrie PowerPanel accessory (sold separately) only. Refer to www.moultriefeeders.com for more information.

TV OUT JACK

View still pictures and videos on your TV by connecting a 2.5mm video cable (sold separately).

II QUICK START INSTRUCTIONS

- 1** Open the camera case cover by unfastening the two cover clips on the right side of the cover.
- 2** Locate the battery compartments on each side of the LCD display. Slide the battery compartment cover plates in the direction of the arrows and remove the cover plates.
- 3** Install six (6) C size Alkaline batteries with polarities as indicated on battery compartment (3 per side). Re-install the battery compartment cover plates securely.
- 4** Secure Camera to tree or pole using strap loops on back and provided Strap.
- 5** Turn Camera on by sliding ON/OFF/AIM switch to the ON position. Press the MODE button one time to get to the Camera Setup Menu. Set Time and Date by pressing OK, using the UP or DOWN buttons to adjust selected field, the LEFT or RIGHT buttons to move to the next field and OK when done.
- 6** Press MODE button until TRAIL CAM is displayed Your Camera will now automatically take pictures or video whenever an animal is detected in range -based on the default settings below.

III DEFAULT SETTINGS

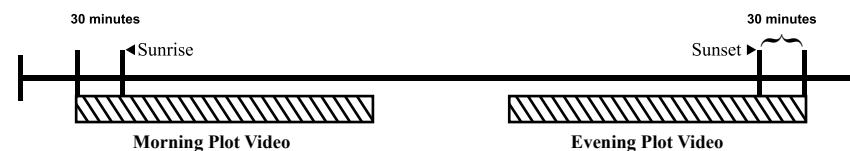
Menu Option	Setting
Capture Mode	Trail Cam (still)
Photo Quality	High
Photo Delay after each photo is taken	1 minute
Multi Shot Count	1-Shot
Video Resolution	High
Video Length	5 seconds
Camera Name	MYCAMERA
Temperature	Fahrenheit
IR Test	OFF
Info Strip printed on photos	ON
Default Settings	NO
Delete All	NO
Flash	ON

IV MODES OF OPERATION

The GameSpy offers several modes of operation as described below. The camera is in Trail Cam Mode by default.

- 1 SETUP**
Enables you to customize the operation of your camera - refer to the CAMERA SETUP section of this manual. The camera automatically goes into the mode you have selected, below, after 90 seconds of inactivity.
- 2 TRAIL CAM MODE**
Still photos taken when an animal is detected. The number of photos taken when an animal is detected is configurable in Settings. Photos are stored in the in the DCIM/100_MDGC folder on the SD card.
- 3 PLOT CAM MODE**
The camera takes photos at a specified interval during the day and combines them together to create a Plot Video (*.MLT file) which can be viewed on the supplied Moultrie Plot Stalker software. The camera takes a Plot Video twice a day; once in the morning and once in the evening. The morning Plot Video begins 30 min before sunrise. The evening Plot Video ends 30 min after sunset. See chart below as a reference. The length of each Plot Video is determined by the Plot Duration setting in the camera menu. The camera will detect the correct sunrise and sunset times automatically and adjust itself accordingly. The Plot Videos are stored in :/PLOT folder on the SD card.

IMPORTANT: It will take the camera 24hrs to properly adjust to the correct sunrise and sunset times. As a default the camera will start the morning Plot Video at 5:30am and end the evening video at 6:30pm. To reset the sunrise and sunset times back to the default times, use the Default Settings option in the menu.



- 4 HYBRID CAM MODE**
Camera operates in Plot Cam mode during the day and Trail Cam Mode during the night. Thirty minutes after dusk the camera will enter the Trail Cam mode and take night photos when the PIR sensor is triggered.
- 5 VIDEO MODE**
Camera records a user video when an animal is detected during daylight. The video length is configurable in Settings.

V CAMERA SETUP

The menu navigation buttons are used to navigate through the available settings. The UP or DOWN buttons move to the next menu item, OK selects the item to be changed.

→ **Setup Date/Time** - press the OK button to select the Month and use the UP or DOWN buttons to modify. Press the LEFT or RIGHT button to move to the next field. Press the OK button again to save your selections. The Time and Date is retained between battery changes. Time is not automatically adjusted for daylight savings.

SETUP DATE/TIME
09/01/10 12:00PM

→ **Capture Mode (default Trail Cam)** - press the OK button on the CAPTURE MODE screen to edit the settings and the UP or DOWN button to change to the desired setting. Trail Cam (photos taken based on animal detection), Plot Cam (photos taken at timer intervals), Hybrid Cam and Video are described in the MODES OF OPERATION section of the manual.

CAPTURE MODE
TRAIL CAM

→ **Photo Quality (default High)** -The higher the quality of the photo/image the more memory it consumes. However, higher quality images have higher resolution which results in clearer images -especially - when zooming in. There are four photo/image quality settings -LOW, MEDIUM, HIGH and ENHANCED. Press the OK button on the PHOTO QUALITY screen to edit the setting and the UP or DOWN button to change to the desired setting. Refer to SPECIFICATIONS section of this document for details on number of images stored based on Photo Quality.

PHOTO QUALITY
HIGH

→ **Photo Delay (default 1 minute)** -The photo delay determines the number of minutes between pictures when an animal is detected and remains in range. To change the PHOTO DELAY, press the OK button on the IMAGE DELAY screen to edit the setting and the UP or DOWN button to change to the desired setting. Photo Delays can be set to 15 seconds, 30 seconds, 1, 5 10, 30 and 60 minutes.

PHOTO DELAY
1 MIN

V CAMERA SETUP (cont.)

→ **Multi Shot Count (default 1-Shot)** -When the GameSpy Camera is configured for STILL in the Capture Mode screen, the camera can take 1, 2, or 3 pictures each time an animal is detected. There is an approximate 4 second delay between pictures based on battery strength. To change the number of pictures taken, press the OK button on the MULTI IMAGE screen to edit the setting and the UP or DOWN button to change to the desired setting.

MULTI SHOT
1-SHOT

→ **Video Resolution (default low)** -Video resolution can be set to LOW or HIGH. The higher the quality of the video, the more memory it consumes. However, higher quality videos have higher resolution. Press the OK button on the VIDEO RESOLUTION screen to edit the setting and the UP or DOWN button to change to the desired setting. Refer to SPECIFICATIONS section of this document for details on number of images stored based on Photo Quality.

VIDEO RESOLUTION
LOW

→ **Video Length (default 5 seconds)** -When the GameSpy Camera is configured for VIDEO in the Capture Mode screen, the camera will record video for a designated amount of time each time an animal is detected. To change the amount of time recorded, press the OK button on the VIDEO LENGTH screen to edit the setting and the UP or DOWN button to change to the desired setting (5 , 15 or 30 seconds). The maximum video length is 10 seconds at night.

VIDEO LENGTH
5 sec

→ **Camera Name (default MYCAMERA)** - the Camera Name is printed on the photos and provides a point of reference when multiple cameras are used. To change the Camera Name, press the OK button on the CAMERA ID screen to modify the first character. Press the UP or DOWN button to select the desired character (A to Z, 0 to 9, dash or space). Press LEFT or RIGHT button to move to the next character.

CAMERA NAME
MYCAMERA

→ **Temperature (default Fahrenheit)** -the temperature is printed on the photo and can be in degrees Fahrenheit or Celsius. To change the temperature units, press the OK button on the TEMPERATURE screen and the UP or DOWN button to change to the desired units.

TEMPERATURE
FAHRENHEIT

V CAMERA SETUP (cont.)

→ **IR Test (default off)** - The IR Test function can be turned ON to test the sensing range of the camera. With IR Aim ON the LED on the front of the camera will flash each time the camera detects presence; however, a picture will not be taken.

IR TEST
OFF

→ **Info Strip (default on)** - When the Info Strip is turned ON, the information strip, as described in the Advanced Setup section of this manual, is printed on the photos. When the Info Strip is turned OFF, the photo contains no information strip. Press OK on the INFO STRIP screen. Press UP or DOWN button to change the value. Press Enter again to select value.

INFO STRIP
ON

→ **Plot Frequency (default 15 seconds)** - When Plot Mode functionality is enabled, the camera will take photos at either 10, 15, 30, or 60 second intervals. To change photo Frequency, press the OK button on the Plot Frequency screen and press UP or DOWN to select the interval.

PLOT FREQUENCY
15 secs

→ **Plot Duration (default 3 hour)** - When Plot Mode functionality is enabled, the camera will capture interval photos for the Plot Duration number of hours after dawn or dusk. The Plot Duration number of hours can be set to 1, 2, 3, 4 hours, or all day.

PLOT DURATION
3 HRS

→ **Default Settings (default no)** - To restore all the settings back to the factory default, press the OK button on the DEFAULT SETTINGS screen. Press the UP or DOWN button to change the value to YES and OK to activate.

SET TO DEFAULT
NO

→ **Delete All? (default no)** - To remove all the images from the internal memory or on the SD card, press the ENTER button on the DELETE ALL screen. Press the UP/DOWN button to change the value to YES and SELECT to delete all photos.

DELETE ALL?
NO

→ **Flash (default on)** - To modify the Flash setting, press the OK button on the FLASH screen. Press UP or DOWN to switch between FLASH ON and FLASH OFF and press OK again to select desired setting.

FLASH
ON

VI GAMESPY CAMERA SPECIFICATIONS

Resolution	5.0MP
Photo Quality	
LOW	744 x 416
MEDIUM	1480 x 832 (1.3MP)
HIGH	2368 x 1328 (3.2 MP)
ENHANCED	2984 x 1680
Video	
HIGH	744 x 416
LOW	376 x 208
Approximate photos stored 1GB SD card	
LOW	9999
MEDIUM	2809
HIGH	1100
ENHANCED	690
Approximate video time stored 1GB SD card	
HIGH	20
LOW	60
Optional SD Memory Card	32 GB Max
Optical Field of View	55 degrees
Batteries	6 Alkaline C cell
Approximate Flash Range	60 feet

FCC Statements **FC** Maulzie Products, LLC
MFH-140XT

NOTE: Changes or Modifications not expressly approved by the party responsible could void the user's authority to operate this device.

The device complies with part 15 of the FCC Rules. Operation is subject to the following two conditions: (1) This device may not cause harmful interference, and (2) this device must accept any interference received, including interference that may cause undesired operation.

NOTE: THE MANUFACTURER IS NOT RESPONSIBLE FOR ANY RADIO OR TV INTERFERENCE CAUSED BY UNAUTHORIZED MODIFICATIONS TO THIS EQUIPMENT. SUCH MODIFICATIONS COULD VOID THE USER AUTHORITY TO OPERATE THE EQUIPMENT.

NOTE: This equipment has been tested and found to comply with the limits for a Class B digital device, pursuant to Part 15 of the FCC Rules. These limits are designed to provide reasonable protection against harmful interference in a residential installation. This equipment generates, uses and can radiate radio frequency energy and, if not installed and used in accordance with the instructions, may cause harmful interference to radio communications. However, there is no guarantee that interference will not occur in a particular installation.

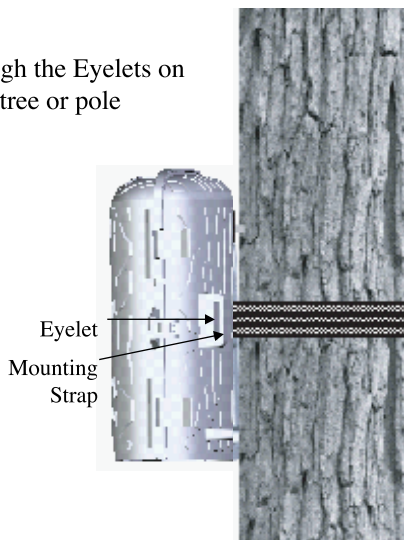
If this equipment does cause harmful interference to radio or television reception, which can be determined by turning the equipment off and on, the user is encouraged to try to correct the interference by one or more of the following measures:

- Reorient or relocate the receiving antenna.
- Increase the separation between the equipment and receiver.
- Connect the equipment into an outlet on a circuit different from that to which the receiver is connected.
- Consult the dealer or an experienced radio/TV technician for help.

VI ADVANCED SETUP

1 MOUNTING CAMERA

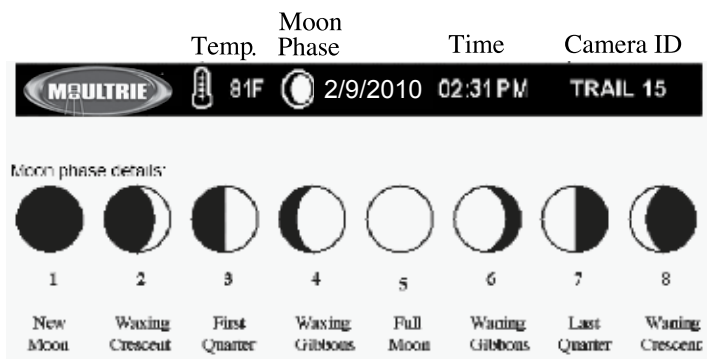
Thread provided Mounting Strap through the Eyelets on the back of the camera and secure to a tree or pole approximately 36" from the ground.



2 VIEWING PICTURES ON COMPUTER VIA USB

1. Plug provided USB cable into the USB port on your Windows 7/Vista/XP computer.
2. Plug other end of USB cable into the camera's USB port.
3. To access JPG pictures and AVI movie files, navigate to "My Computer" and double click the "Moultrie CAM" drive. Picture files will be stored in the DCIM directory; video files are located in the DCIM directory.
4. To exit USB mode, follow Window's instructions for properly disconnecting a removable drive and then unplug

3 INFORMATION ON PICTURE



A PLOTSTALKER SOFTWARE INTRO

INTRODUCTION

In time-lapse photography a series of still photos are taken at regular time intervals. The PlotStalker Software allows you to load the time lapse file that was captured from your Moultrie Game Camera and scroll backwards and forwards through your photos, single step, search for activity in a designated area, and save the files.



SYSTEM REQUIREMENTS

- Computer: Intel® Pentium® 4 or AMD Athlon® 64 processor or above; 1GB RAM minimum; 100 MB hard disk space minimum.
- Operating System: Microsoft® Windows® 32 bit - XP with Service Pack 2 or later; Windows Vista® Home Premium, Business, Ultimate, or Enterprise with Service Pack 1; or Windows 7

SOFTWARE INSTALLATION

- Insert the PlotStalker CD into your computer and follow on-screen instructions.

LOADING PLOT FILES

- 1 Using standard Microsoft utilities (ex. File Explorer – My Computer), copy the PlotFiles (extension is .MLT) from the PLOT directory on the SD card to the hard disk drive in your computer. Note the location stored on the hard disk drive.
- 2 Open the PlotStalker software application from the Windows Start Button menu. Once in the PlotStalker software, click on the File Button
- 3 Browse to the location in which you have saved the Plot file(s) (.MLT) in step 1 above, select the file of interest and click Open.



BEGIN/END

Goes to the first or last photo in the Plot File.



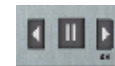
FRAME BY FRAME SEARCH

Individually step forward or backward through each photo.



REWIND/PAUSE/PLAY

Play photos in sequence, pause, or play the photos in reverse order. These functions simulate a video and are useful for manually searching for changes in the photos. When a sequence is being played, press fast-forward or fast-rewind multiple times to increase speed. (1x-5x)



B PLOTSTALKER ACTIVITY SEARCH

ACTIVITY SEARCH

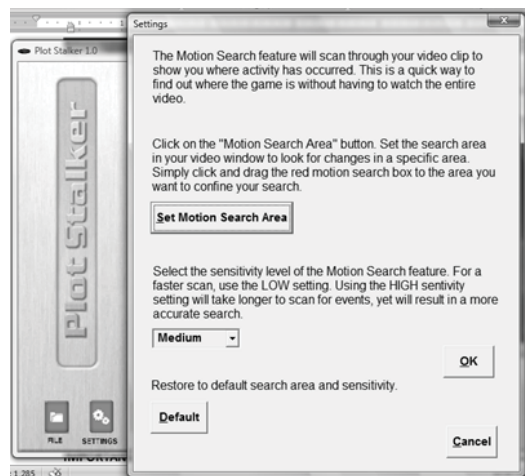
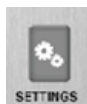
The Search Feature will scan through your photos and automatically look for changes in regions that you identify in Setup.

In search mode, the PlotStalker software scans through the .mlt photo file, stops on a photo when changes are found in your identified region, and then highlights the changes in blue. You can click anywhere on the screen to remove the blue highlights.



ACTIVITY SEARCH SETUP

Click the Settings button to activate the Region and Sensitivity settings for the Activity Search



DEFINE SEARCH REGION

Provides the ability to search for changes in the photo in a specific region rather than the entire photo.

- 1 Click on the Set Motion Search Area Button.
- 2 Use the mouse to select and drag the red outline around the area you want to search for movement. This allows you to focus on a very precise area if required.
- 3 Click OK button on the Settings Popup window to confirm your settings and exit the menu.

SENSITIVITY

- 1 Set to High, Medium or Low - This sets the level of pixel change the program will detect. Note; a pixel change will occur with a color, intensity, lighting or movement so this setting is critical to obtain the desired results.

DEFAULT SETTINGS

- 1 Click on Default button to return to the default values for Search Area and Sensitivity settings

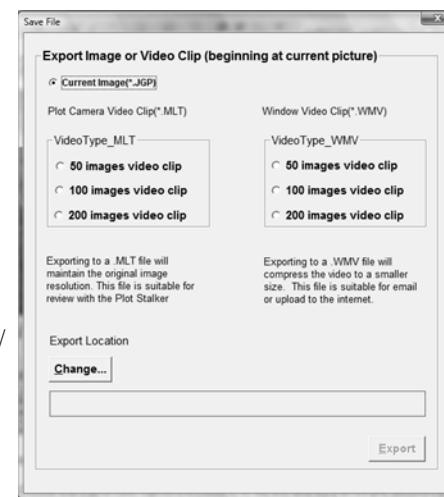
C PLOTSTALKER SAVE FILE

SAVING FILES OVERVIEW

Use the Save File features of the PlotStalker software to create a single photo, reduce the overall size of the .mlt file, exclude unwanted photos in the front, or create a video that can be viewed using a standard media player.

EXPORTING AN IMAGE/PHOTO

- 1 On the main screen, choose a starting image/photo (frame) by using the scroll bar on the bottom of the display or the frame-by-frame search feature.
- 2 Press the SAVE button
- 3 Select the Current Image (*.jpg) radio button
- 4 Press Change... to enter the directory and filename to save the image
- 5 Press Export to save the file




EXPORTING MLT FILE

- 1 Select the appropriate 50, 100, or 150 video clip radio button. This will create a MLT format file from the starting frame plus the next 50, 100, or 150 frames.
- 2 Select the Change button to select the desired location to save the export file.
- 3 Enter the directory and filename to save the file
- 4 Select the Export button to save the file. These files are viewable with Plot Stalker Software.

EXPORTING WMV FILE

- 1 Select the appropriate 50, 100, or 150 video clip radio button. This will create a .wmv format file of the starting frame plus the next 50, 100, or 150 frames.
- 2 Select the Change button to select the desired location to save the export file.
- 3 Enter the directory and filename to save the file
- 4 Select the Export button to save the file. The program will convert the images to video based on the chosen settings. The .wmv file can be viewed using a standard media player.



Our Service Department will gladly answer any questions you have. Call 205-664-6700 or 800-653-3334, Monday-Friday, 8:00 AM to 5:00 PM CST.
www.moultriefeeders.com

Free Manuals Download Website

<http://myh66.com>

<http://usermanuals.us>

<http://www.somanuals.com>

<http://www.4manuals.cc>

<http://www.manual-lib.com>

<http://www.404manual.com>

<http://www.luxmanual.com>

<http://aubethermostatmanual.com>

Golf course search by state

<http://golfingnear.com>

Email search by domain

<http://emailbydomain.com>

Auto manuals search

<http://auto.somanuals.com>

TV manuals search

<http://tv.somanuals.com>