

The logo for MOXI, featuring the word "MOXI" in a bold, white, sans-serif font. The letters are stylized, with the 'O' and 'X' having a unique, blocky appearance. A small trademark symbol (TM) is located at the top right of the 'I'.

media center user guide

software version 4.1

The information contained in this document is provided solely for use in connection with Digeo products and services. Digeo, Inc. reserves all rights in and to such information and the products and services discussed herein. This document should not be construed as transferring or granting a license to any intellectual property rights, whether express, implied, arising through estoppels or otherwise. EXCEPT, AS MAY BE AGREED IN WRITING BY DIGEO, INC., THE INFORMATION CONTAINED IN THIS DOCUMENT, AND ALL DIGEO PRODUCTS AND SERVICES ARE PROVIDED "AS IS" AND WITHOUT A WARRANTY OF ANY KIND. DIGEO, INC. HEREBY DISCLAIMS ALL WARRANTIES, EXPRESS OR IMPLIED, RELATING TO THE INFORMATION IN THIS DOCUMENT AND DIGEO PRODUCTS, INCLUDING, BUT NOT LIMITED TO, THE IMPLIED WARRANTIES OF MERCHANTABILITY, FITNESS FOR A PARTICULAR PURPOSE, AND NON-INFRINGEMENT OF THIRD PARTY INTELLECTUAL PROPERTY. The information in this document may contain inaccurate information. Digeo, Inc. makes no representations or warranties with respect to the accuracy or completeness of the information contained in this document, and Digeo, Inc. reserves the right to change the information in this document, product or service descriptions, and product or service specifications at any time, without notice.

This product incorporates copyright protection technology that is protected by U.S. patents and other intellectual property rights. Use of this copyright protection technology must be authorized by Macrovision Corporation, and is intended for home and other limited consumer uses only, unless otherwise authorized by Macrovision. Reverse engineering or disassembly is prohibited.

Contains Macromedia Flash™ Player technology by Macromedia, Inc. Copyright © 1995-2001 Macromedia, Inc. All rights reserved. Macromedia, Flash and Macromedia Flash are trademarks or registered trademarks of Macromedia, Inc. in the United States and internationally.

Digeo, Inc. reserves the right to discontinue or change any product or service, or the documentation for any product or service, at any time, without notice.

Trademarks: Digeo, the Digeo logo, Moxi, the Moxi logo, and combinations thereof are trademarks of Digeo, Inc. in the USA and other countries. All other product, service or brand names are the property of their respective owners.

Manufactured under license from Dolby Laboratories. Dolby and the double-D symbol are trademarks of Dolby Laboratories.

© 2006 by Digeo, Inc. All rights reserved.

Contents

List of figures	iv	Searching by category	13	Using Jukebox	23
List of tables	v	Remembering your favorite channels	13	Loading music	24
Introduction	1	Using the Moxi Flip Bar	13	Playing music	24
Powerful browsing and search tools	2	Using the player bar	14	Reading service messages	25
Watch and record in high-definition	3	Recording shows	15	Playing Moxi games	25
Take charge of your TV	3	Understanding the program card icons and colors	15	Changing settings	29
Other great applications	3	Finding a previously scheduled recording	16	Channel List	30
Extend the media center to a second TV	4	Recording options	16	Sound Effects	30
Using this guide	4	Recording series	17	HDTV Setup	30
Using Moxi	7	Using SuperTicker™	19	Setting standard TV video resolution	31
Using the remote control	8	Limiting headlines to one topic or item	19	Setting HDTV video resolution	31
Navigating the Moxi Menu	10	Reading the whole story	20	Widescreen	32
Using Change Time Slot	10	Using Photos	20	Audio Output	33
Learning about Moxi	11	Uploading photos	20	Secondary Audio	34
Understanding the storage meter	11	Viewing photos	21	Closed Caption	34
Software version and other details	11	Using Media Player	22	Skip settings	34
Searching for shows	12	DVD video resolutions	23	PC Link Setup	35
Searching by title or keyword	12	DVD copyrights	23	CD Options	35
				Parental Controls	35

Creating a PIN	35	Setting up your computer	54	Moxi remote programming codes	77
Changing a PIN	36	Using Windows Media Player 11	55	TV Codes	78
Locking channels or programs by rating	36	Using Windows Media Connect	56	Audio device codes	85
Turning off parental controls	37	Playing shared music or photos	57	Specifications	91
Controlling Pay Per View or On Demand purchases	38	Getting connected	59	Media center specifications	92
If you forget your PIN	38	Before connecting	60	Moxi Mate specifications	92
Using and programming the remote	41	Ventilation requirements	60	Glossary	93
Functions of the Moxi remote	42	Media center information	61	Index	97
Multi-function buttons	42	Media center illustrations	61		
Programming the remote	44	Moxi Mate information	62		
Programming with codes	44	Moxi Mate illustrations	62		
Programming by search	45	Available ports	62		
Infrared emitter	46	Connecting to the TV and receiver	65		
Adding additional recording space	47	Connecting to the home network	66		
Using an external hard drive	48	Wired data connection	66		
Connecting an external hard drive	48	Wireless data connection	67		
Disconnecting an external hard drive	49	Adding components	67		
Recovering corrupted programs	49	Troubleshooting	71		
Archiving simplified	49	Media center troubleshooting	72		
Choosing the connection	49	Audio and video problems	72		
Archiving to a VCR or DVCR	50	Remote or front panel control problems	73		
Using a digital VCR to archive programs	50	Moxi Mate troubleshooting	73		
Enabling PC Link	53	Power problems	73		
System requirements	54	Audio and video problems	74		
Connecting to the network	54	Home network troubleshooting	74		

List of figures

Figure 1: Conceptual view of the Moxi Menu.....	2	Figure 24: Uploading photos to the media center	21
Figure 2: The Moxi remote control	9	Figure 25: Browsing photo albums.....	21
Figure 3: Channels list in the Moxi Menu.....	10	Figure 26: Selecting an album to play in Jukebox	23
Figure 4: Channels list action menu.....	10	Figure 27: Adjusting the sound effects volume.....	30
Figure 5: Change Time Slot card.....	10	Figure 28: Letter box mode on standard (4:3) and widescreen (16:9)	32
Figure 6: Change Time Slot remote button functions.....	11	Figure 29: Cropped mode on standard (4:3) and widescreen (16:9)	32
Figure 7: The About Moxi card	11	Figure 30: Wide mode on standard (4:3) and widescreen (16:9).....	32
Figure 8: The Find & Record card.....	12	Figure 31: Changing the audio output	33
Figure 9: Entering letters with the remote buttons.....	12	Figure 32: Enabling or disabling SAP	34
Figure 10: Searching for shows by title	12	Figure 33: Skip settings card	34
Figure 11: Favorites card	13	Figure 34: Controlling movie ratings	36
Figure 12: The flip bar	13	Figure 35: The Favorites category with locked programs	37
Figure 13: Playback controls	14	Figure 36: Disabling parental controls	37
Figure 14: Features of the player bar	14	Figure 37: Setting the relock timer	38
Figure 15: Program card with the scheduled to record icon	15	Figure 38: Relock time	38
Figure 16: Program card icons	15	Figure 39: The Moxi remote.....	43
Figure 17: Program card background colors and icons indicate status....	16	Figure 40: Infrared receiver on the media center front panel	46
Figure 18: Recording options screen	16	Figure 41: Signal flow from the media center.....	49
Figure 19: Summary of series recording options	17	Figure 42: Example of connections between the media center and DVCR.....	51
Figure 20: Changing the series priority	18	Figure 43: IEEE 1394 connector types	51
Figure 21: Locking a SuperTicker topic	19	Figure 44: Using the Media Sharing screen	55
Figure 22: Locking a SuperTicker item	19	Figure 45: Link icon	57
Figure 23: Reading a SuperTicker story	20		

Figure 46: Ventilation requirements	60
Figure 47: Media center front panel (some models differ).....	61
Figure 48: Media center rear panel (some models differ)	61
Figure 49: Moxi Mate front panel.....	62
Figure 50: Moxi Mate rear panel and connections	62
Figure 51: Connecting an HDTV or EDTV and digital audio.....	65
Figure 52: Connecting a standard TV (480i) and stereo audio.....	66
Figure 53: Wired home network connection to the media center	66
Figure 54: Wireless home network connection to the media center	67
Figure 55: Installation of secondary components	67

List of tables

Video connections and supported resolutions	31
Audio connections and selections	33
Video connections and supported resolutions	50
Video cables, starting with highest quality connection	63
Audio cables starting with highest quality connection	64
TV codes	78
Audio device codes	85
Media center specifications	92
Moxi Mate specifications	92

Introduction

1

Powerful browsing and search tools.....	2
Watch and record in high-definition.....	3
Take charge of your TV	3
Other great applications	3
Extend the media center to a second TV	4
Using this guide.....	4

The Moxi Menu is the easiest, most intuitive way to browse and command the expanding range of programming content and services.

The Emmy® Award-winning dual-axis navigation (see figure 1) puts content choices right at the top of the menu instead of forcing you to dig through several levels of menus.

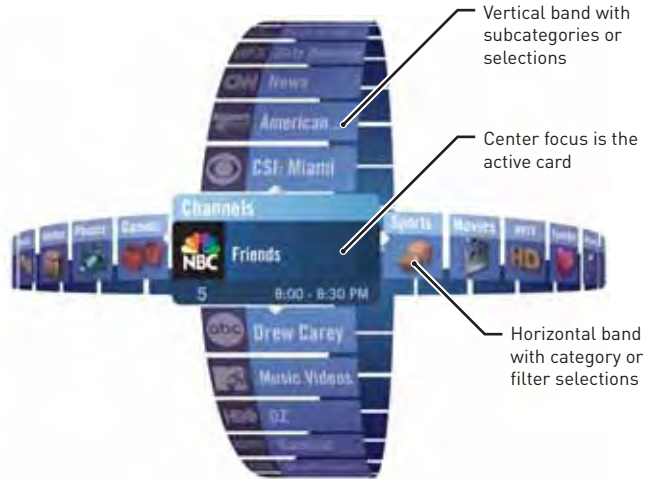


Figure 1: Conceptual view of the Moxi Menu

Powerful browsing and search tools

Searching through hundreds of channels one by one is no way to find shows. With the mini-TV window, you can browse the menu without interrupting what you are watching.

- **Total access** — Integrated menu displays cable programming and media applications, such as Jukebox, Photos, and Games.
- **Intuitive action menus** — Choices (such as watch, record, or close) are presented in clear pop-up menus.
- **Integrated On Demand and Pay Per View** — Listings available from multiple locations.
- **Browse while viewing** — The mini-TV window and Moxi Flip Bar make it easy to browse program information and set programs to record without leaving the current show.
- **Powerful search** — Search two full weeks of guide data, including On Demand and Pay Per View listings, by title, keyword, and category.
- **Category filters** — Browse by category – HDTV, movies, sports, kids, news, music, and more.
- **Parental controls** — Block shows by TV rating, movie rating, or channel, and set On Demand and PPV purchase options.

Watch and record in high-definition

The Moxi service offers robust high definition TV (HDTV) so you can watch and record crystal-clear high definition programming.

- Full DVR capabilities for HDTV, with Dolby Digital and surround sound decoding.
- Support for multiple video resolutions including 480i, 480p, 720p, and 1080i.
- Down-convert HD resolutions to standard definition TV (SDTV).
- Output options in 16:9 (widescreen) and 4:3 (standard) with DVI-D and component video outputs (in addition to RF, composite, and S-Video connectors).
- Automatic resolution switching passes through the native resolution of source programming for TVs that support multiple resolutions.

Take charge of your TV

Digital Video Recording (DVR) allows you to get more from your TV service provider. With Moxi, you can watch TV on your own schedule. Never miss your favorite shows, even if two are on at the same time.

- Pause and use instant replay on live TV.
- Watch one show while recording another, or record two shows while playing back a previously recorded show.
- Fast-forward and rewind shows, at a variety of speeds.
- Automatically record the entire season of a favorite series.
- Enjoy the clarity of high-definition video recordings.

Other great applications

On Demand and Pay Per View — The innovative Moxi Menu makes it easy to browse, preview, and purchase On Demand programming.

You can surf through On Demand titles in a menu category, or find On Demand titles included within search and browse results alongside Pay Per View, live TV, and recorded show listings, all without digging through a deep menu.

Digital photos — Photos offers the easiest way to import, store, browse, and view family photos on TV.

SuperTicker™ — SuperTicker runs at the bottom of the TV screen and brings you one-touch access to weather, sports, news, and more, without taking you away from your show. Use the remote to see the details behind any headline.

DVD player — The on-screen menu for DVDs makes it easy to switch to alternate commentary, language tracks, and subtitles (some models).

Games — Enjoy traditional arcade games such as Mahjong, Video Poker, Slot Machine, and more.

Jukebox — Import music from CDs and then play them through the Moxi Menu. Browse your collection by artist, album, genre, or song. Shuffle the collection by genre, artist, or album.

PC Link — PC Link allows your media center to access photos and music stored on your networked computers. Any shared media are then available for display or play on the TV and home theater audio system. Using Windows Media Connect 2.0 or later, photos and music files appear in the Photos or Jukebox categories, just like photos and music loaded directly on the media center.

PC Link can connect to your home network through Ethernet or with a wireless Ethernet adapter.

Extend the media center to a second TV

The Moxi Mate makes all the features of the media center available to a second TV in the home. Contact your service provider for the availability of the Moxi Mate. Not all media centers are compatible.

Using this guide

Each chapter includes a short table of contents at the beginning and a blue box at the end directing you to the next step in the process or further information on recently discussed subjects.

At the back of this book there is a glossary and index. Since the Moxi user interface is so intuitive, readers often look to the index to find answers to specific questions.

Notes appear throughout this book. The notes have icons to indicate that the subject.



Notes with a red icon contain cautionary or warning information. Failure to heed this information could lead to damaged or malfunctioning equipment or loss of data.



Notes with the blue icon contain informative tips or answers to common questions.



Notes with the orange icon contain something to try out.

When a word is bolded it either refers to an element of the Moxi Menu or a button on the remote or front panel that requires user action. For example, press the **skip** button on the remote.

The next steps

- To jump right into using Moxi, go to *Using Moxi* on page 7.
- To customize Moxi to suit your equipment and configuration, see *Changing settings* on page 29.
- See *Using and programming the remote* on page 41 to learn how to configure the remote for your TV.
- Do you have a specific question? Use the *Glossary* on page 93 and *Index* on page 97 to find the answer.

Using Moxi

Using the remote control	8
Navigating the Moxi Menu	10
Learning about Moxi	11
Searching for shows	12
Remembering your favorite channels	13
Using the Moxi Flip Bar	13
Using the player bar	14
Recording shows	15
Using SuperTicker™	19
Using Photos	20
Using Media Player	22
Using Jukebox	23
Reading service messages	25
Playing Moxi games	25

This chapter tells you all you need to know to become an expert user of the Moxi Menu.

Using the remote control

The Moxi remote allows full control of the media center and provides volume controls for your TV or audio receiver. Buttons on the remote are organized by function. Many buttons have multiple functions depending on whether you are in the Moxi Menu, watching full-screen TV, or using an application such as Jukebox.

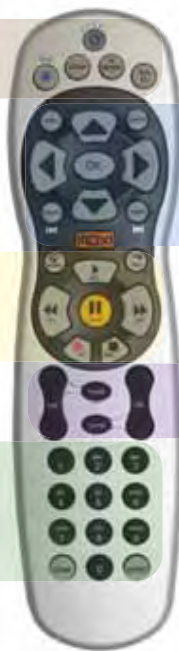
The primary function of the orange Moxi button is to open and close the Moxi Menu but no matter where you end up in the Moxi Menu, always remember that the Moxi button can get you back to full-screen TV with a couple of presses.

See figure 2 on page 9 for a detailed look at all the buttons and functions.

* locks and unlocks SuperTicker items
ticker displays and hides SuperTicker
power turns the TV and audio receiver on and off
on demand jumps to the On Demand category
live TV jumps to full-screen live TV

play starts a recorded program, song, or album
rew multi-speed rewind for playback (press multiple times to select speed)
fwd multi-speed fast forward for playback (press multiple times to select the speed)
rec starts a recording
stop stops a program, song, or album
pause pauses a live or recorded show, song, or album (press pause, then fwd for slow motion)
replay jumps back seven seconds, moves the Moxi Menu back one day
skip jumps ahead in stored or recorded video, moves the Moxi Menu forward one day

number keys tune directly to channels, enter text in menus, make choices in games
1 press twice to backspace during text entry
0 press twice to add a space during text entry
clear deletes all entered text, deletes shows from Recorded TV, and dismisses the Moxi Menu and Flip Bar
enter applies numeric or text entries



info displays additional information about the selected item
zoom toggles between an open Moxi Menu and full-screen TV without losing menu position
arrow up, down, right use to navigate menus, play games (hold for turbo speed)
arrow left exit most menus, navigate menus, play games (hold for turbo speed)
OK selects or activates the selected item
back jumps back 15 minutes, shows last note page, jumps 30 minutes in the Moxi Menu, or goes to the previous photo
next jumps back 15 minutes, shows last note page, jumps 30 minutes in the Moxi Menu, or goes to the next photo
MOXI opens and closes the Moxi Menu from most places (two presses might be required)

vol adjusts the audio volume on the TV or audio device
mute toggles sound on and off
jump goes to the last viewed channel
ch changes channels or pages through vertical menus (hold for turbo speed)

Figure 2: The Moxi remote control

Navigating the Moxi Menu

The Moxi Menu works by filtering TV programs and features into categories such as Channels, Movies, Sports, Kids, and more. These category cards appear in the horizontal band. The vertical band contains the list of choices for that category.

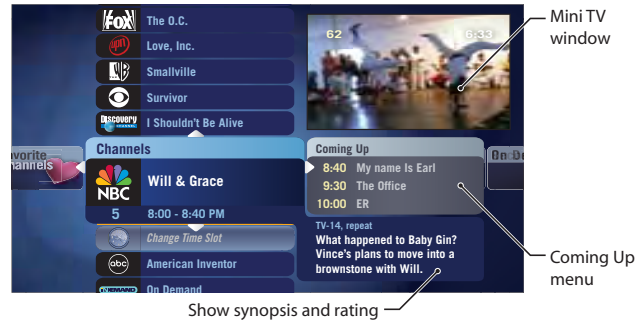


Figure 3: Channels list in the Moxi Menu

1. Press the orange **Moxi** button on the remote to open the Moxi Menu.
2. The Channels category card is in center focus (see figure 3). Use the up and down arrow keys on the remote to scroll vertically.
3. Press the right arrow key once to move to the Coming Up menu, and then scroll vertically to see what is showing later on that channel.

4. When you find a show to watch press **OK** and the action menu appears (see figure 4).
5. Press **OK** again to watch the show.



Figure 4: Channels list action menu

Using Change Time Slot

The Change Time Slot card appears in most categories and includes a menu that allows you to scroll to a specific time (see figure 5). Use the right arrow to highlight the menu, and then choose the time.

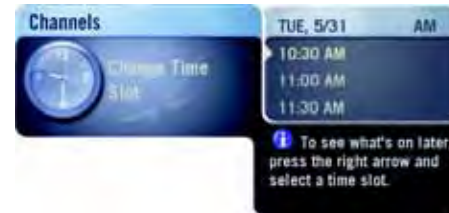


Figure 5: Change Time Slot card

all DVRs were not created equal

Alternatively, change the time slot by using the remote (see figure 6).

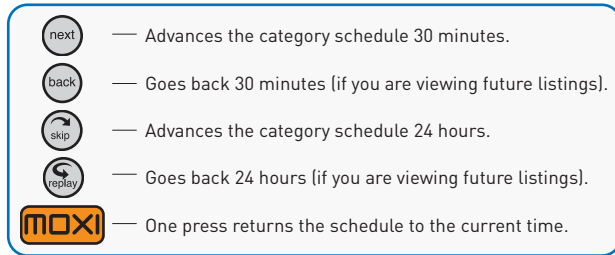


Figure 6: Change Time Slot remote button functions

Learning about Moxi

The **About Moxi** category offers several helpful tips and a welcome movie that provides an overview of the media center.



Figure 7: The About Moxi card

Understanding the storage meter

The **Storage & Stats** card in the **About Moxi** category provides a disk space meter that indicates how much hard drive space is in use. If an external hard drive is connected, the media center adjusts the meter to account for the extra space. This meter only provides a general idea of how much more you can record. The exact space for future recordings depends upon the type of recording (HD or SD), the broadcasting station, and whether or not any stored programs are eligible for deletion.

Software version and other details

The Storage & Stats card in the About Moxi category lists information that may be helpful during a service call.

- Software version — the current version of the Moxi software running on the media center
- Box ID — serial number or hardware device ID (HDID)
- IP address — a numerical address that identifies a specific location or computer on the Internet
- MAC address — Media Access Control address is a unique number assigned to a media center
- The date of the most recent updates for account settings, entitlements, and EPG data

Searching for shows

There are many ways to find shows. Besides channel or menu surfing, you can search by title, keyword, or by category.

Searching by title or keyword

1. In the Moxi Menu, scroll to the **Find & Record** category (see figure 8).



Figure 8: The Find & Record card

2. Choose **By Title** or **By Keyword**, and then enter the search word. Use the arrow keys to highlight a letter, and then press **OK** to enter it. Alternatively, use the number keys as you would when entering letters on a telephone or writing a mobile phone text message (see figure 9 and figure 10).
3. Press the left arrow key on the remote to view the results.
4. Select a show, and then press **OK** to open the action menu.



When searching **By Title**, the results list sorts as you type. When searching **By Keyword**, the results appear only after you use the left arrow to view the results.

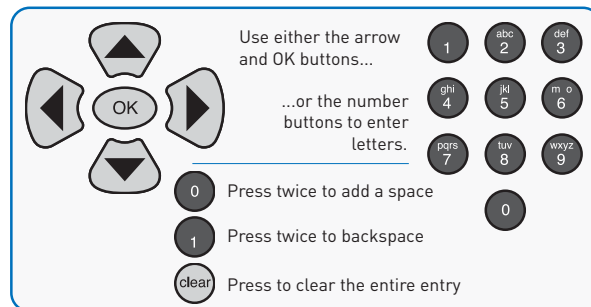


Figure 9: Entering letters with the remote buttons



Figure 10: Searching for shows by title

all DVRs were not created equal

Searching by category

The search by category method organizes shows scheduled in the next 24 hours into category or genre filters such as movies, drama, comedy, and so on. Some categories include a card, such as **more movies** that shows additional matches for the next two weeks or so. Shows may appear in more than one genre.

Remembering your favorite channels

The Moxi Menu automatically builds a list of the 15 channels you watch most frequently and stores them in the **Favorites** category (see figure 11). Favorites are compiled separately for the Moxi Mate and media center.



Figure 11: Favorites card

The favorites list builds from channels that appear in the **Channels** category and excludes any channels blocked by parental controls.

- Delete a single channel at a time by selecting the channel, and then choosing **remove channel**, or by pressing the **clear** button on the remote.
- Clear the entire favorites list by selecting the **Options** card (you might need to scroll down to see it), and then choosing **clear all**.

Using the Moxi Flip Bar

While watching full-screen TV, press any arrow, the **OK** button, or enter a channel number and the flip bar displays. The flip bar provides many of the same functions as the **Channels** card in the Moxi Menu (see figure 12).

2

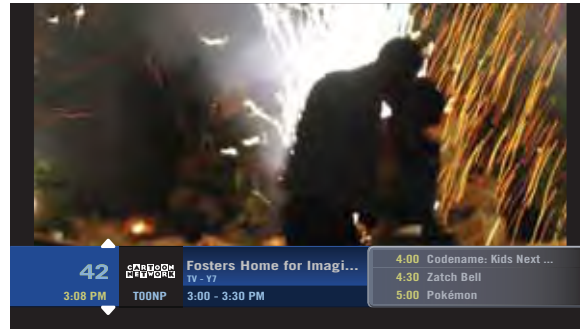


Figure 12: The flip bar

The flip bar lets you access controls while scaling the video slightly. Information is shown about the current show and upcoming programs.

- Use the up and down arrows to see what is on other channels.
- Press the right arrow, and scroll down to see what is on later.
- Press **OK** to open the action menu for the selected show.

Using the player bar

The player bar appears whenever you press a playback control button (see figure 13) and provides information about the duration of the program and your current playback state (see figure 14).

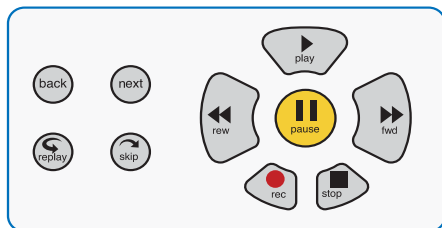


Figure 13: Playback controls

The player bar shows you the program begin and end time (or the duration of a recorded program), the current time, and the amount of the program stored in temporary memory. The playing state of the program is shown (rewind, fast-forward, pause, slow-motion, play, or recording). The amount stored in memory is shown in blue.



To activate slow motion press pause, and then press the fast-forward button once.

When you start watching a show, the media center begins storing it in temporary memory. The amount of temporary memory varies, but is

never less than 30 minutes (10 minutes for HDTV). When you change channels, temporary memory may be cleared.

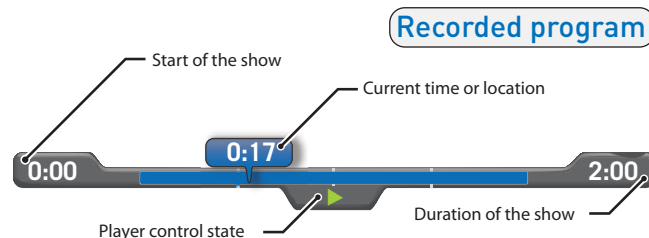
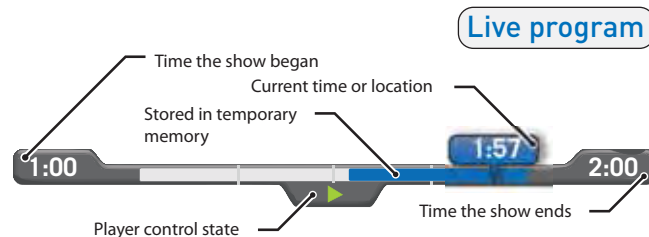


Figure 14: Features of the player bar

If you are watching a live program, you can use the playback controls, such as rewind or replay, on any portion of the show stored in temporary memory. To record it along with the remainder of the show, press **rec**, and then press **OK**.

all DVRs were not created equal

Recording shows

To schedule a recording, highlight it in the Moxi Menu, and then press the **rec** button (or simply press **rec** if you are already watching the show). Alternatively, press **OK**, and then choose one of the following recording options:

- **Record once** — To record only the current episode of the show.
- **Record series** — To record this show every time it airs on the current channel.
- **See all times** — To see other times the show will air in the future. This is helpful if you missed part of a program but want to record the entire program. You can then schedule a recording from the search results.

Once a recording is scheduled, a blue circle icon appears on the program card (see figure 15).

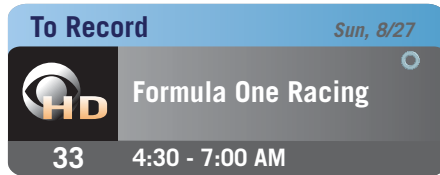


Figure 15: Program card with the scheduled to record icon

Understanding the program card icons and colors

Program card icons appear in the upper right of a show's card in the Moxi Menu and let you know the status of a recorded show or scheduled recording (see figure 16).

2

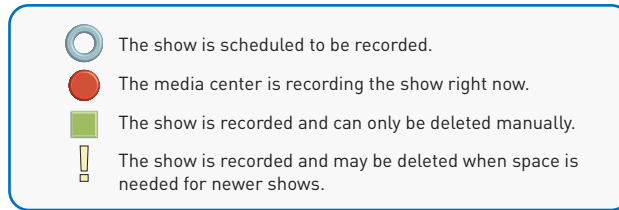


Figure 16: Program card icons

The background color of a program card indicates whether the show is on now, in the future, recorded, or being recorded (see figure 17).

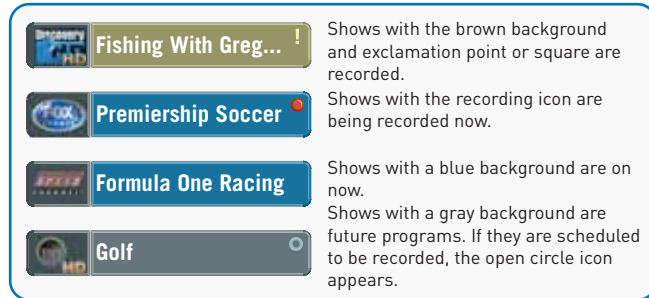


Figure 17: Program card background colors and icons indicate status

Finding a previously scheduled recording

To find a specific show you already scheduled to record, go to the **Find & Record** category. You can use one of the search features or open the **Scheduled to Record** card. A listing of all scheduled recordings in the next two weeks appears.

Recording options

To change recording options when the scheduled show is in center focus, press **OK**, and then choose **recording options** from the options list. The menu summarizes the current options, which you can then modify (see figure 18).

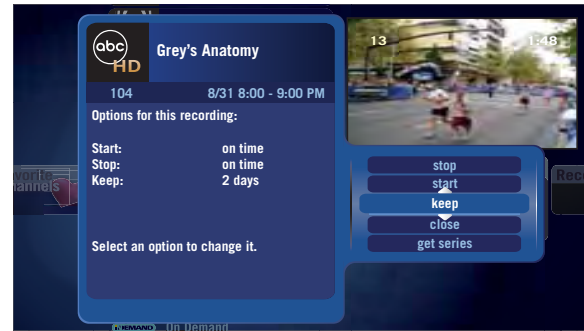


Figure 18: Recording options screen

You can change the start, stop, and keep settings or choose to record the series.

- **Stop:** The default setting is **on time**. You can choose to stop the recording up to five minutes early or up to 90 minutes late.
- **Start:** The default setting is **on time**. You can choose to start the recording up to five minutes early or late.

all DVRs were not created equal

- **Keep:** The default setting is **two days**, which means the program is eligible for deletion after two days, but not deleted until space is needed for new recordings. You can choose to keep the program protected until space is needed, up to four days, or until you delete it manually.
- **Close:** This closes the menu and saves any changes you made.



You can press the left arrow to close and exit most menus.

- **Get series** or **series options** This selection opens the series options menu. For more information on controlling series recordings, see *Recording series*, below.

Recording series

The **record series** option is available from the action menu anytime you select a series episode in the Moxi Menu. If you select **record series**, the media center will record the series according to your settings, which are accessible from any episode, or go to the **Find & Record** category.

1. Open the **Series Options** card.
2. Scroll to the series you want to update.
3. Press **OK**.
4. Select **recording options** from the menu. The current options for the series are summarized on the left in figure 19.

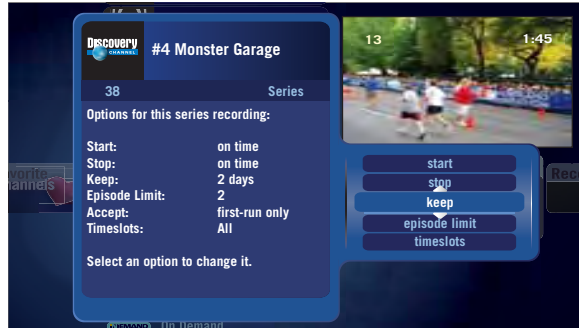


Figure 19: Summary of series recording options

5. Select an option to change it.
 - **Stop:** The default setting is **on time**. You can stop the recording up to five minutes early or up to 90 minutes late.
 - **Start:** The default setting is **on time**. You can start the recording up to five minutes early or late.
 - **Keep:** The default setting is **two days**, which means the program is eligible for deletion after two days, but it is not deleted until space is needed for new recordings. You can choose to keep the program protected only until space is needed, up to four days, or until you delete it manually.

- **Episode Limit:** This sets the maximum number of episodes of the series that the media center will record. If the maximum is reached, new recordings of the series replace the oldest recording of the series. The default setting is five but this can be changed to any number between one and five. You can also remove the limit by selecting **unlimited**.
- **Accept:** The default setting is **accept repeats**. If you do not want repeat episodes recorded, choose **first-run only**.
- **Timeslots:** The default setting is **all**. With some shows, you may want to record repeats but you do not want to record all the repeats. For example, if a show airs several times a day, or if a network runs a marathon, you might only want the shows that air during a specific timeslot. The media center checks to see which timeslots are available and allows you to select a single timeslot or set it to **all** to record every episode that meets your other criteria.
- **Priority:** By default, new series recordings are added to the bottom of the list of series recordings. Series priority only matters when more than two series recordings are scheduled for the same time slot. See *Setting the series priority* for more information.

Setting the series priority

When you schedule a new series recording, it is automatically added to the bottom of the list of series recordings.

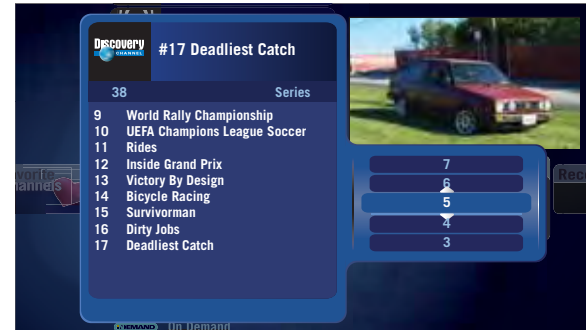


Figure 20: Changing the series priority

If more than two series recordings are scheduled for the same time on the same day, the media center checks the order in the priority list and only records the two programs with the higher priority.

For example, if there are series recordings set for Thursday evening with series priority ranks of 4, 9, and 23, all in the 9:00 PM timeslot, only the series with ranks of 4 and 9 are recorded.

all DVRs were not created equal

To change the series priority:

1. Select **recording options**, and then **series options** from the action menu of any scheduled or recorded series recording card or go to the **Series Options** card within the **Find & Record** category.
2. Choose **priority** or **change priority**, depending on the menu.
3. The menu displays a numbered list of stored series. Select a series if one is not already selected.
4. Use the up or down arrows to place the series (see figure 20 on page 18).

Using SuperTicker™

When activated, SuperTicker displays up-to-date news headlines, weather forecasts, sports scores, and stock market updates.

To open or close SuperTicker, press the **ticker** button near the top of the remote. SuperTicker automatically cycles through all headlines in one topic, and then goes to the next topic.

Sports scores are delayed approximately 15 minutes. Stock market index numbers are delayed approximately 20 minutes.

Limiting headlines to one topic or item

1. Use the arrow keys to scroll to a topic or item.
2. Press **OK**.
3. Choose **lock topic** or **lock item** (see figure 21).

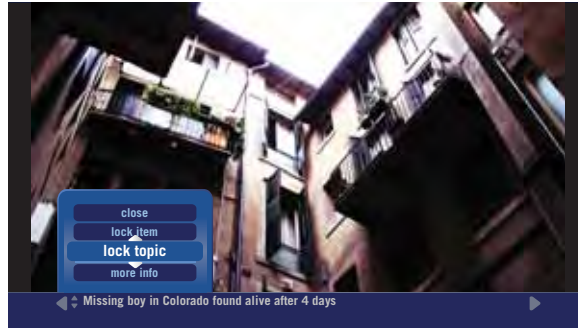


Figure 21: Locking a SuperTicker topic

- When a topic is locked, the arrows at the sides of the screen change to red and SuperTicker only scrolls through that topic.
- When an item is locked, the left and right arrows turn red along with the up and down arrows and SuperTicker is locked on that item (see figure 22).

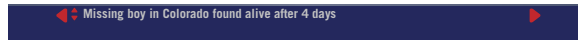



Figure 22: Locking a SuperTicker item



To toggle between locking and unlocking SuperTicker, press .

Reading the whole story

All headlines have a story behind them. To read the story, press **info** on the remote. Use the **next** and **back** buttons to page through the story.

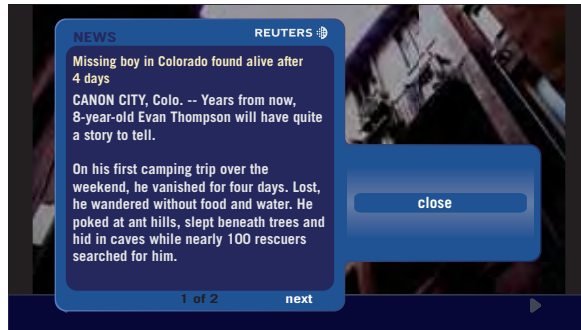


Figure 23: Reading a SuperTicker story

Using Photos

You can load hundreds of digital photos on your media center and then play them back as slideshows on your TV.

The media center can also connect to your networked computer running Windows Media Connect and stream photos over your home network. To learn more about connecting to your PC, see *Enabling PC Link* on page 53.

Uploading photos

1. Attach a memory card reader to a USB port on the media center. The rear ports are USB 2.0 and significantly faster than the front USB ports.
2. Insert the memory card containing the photos into the card reader.
3. In the **Photos** category, choose **load album**.



The media center skips any photos larger than 10 MB.

4. The media center uses a reserved partition of the hard drive for photos and music so uploading photos does not decrease the amount of TV you can record. The media center shows you how much of the dedicated space you are using with the Media Storage Capacity graph (see figure 24).
 - a. If you have room for the new album, continue to Step 5.
 - b. Otherwise, choose **no, close**, and then delete an older album before uploading a new one.
5. Choose **yes, upload** to confirm. The media center creates a new album, labels it with the current date, and copies the photos stored on the memory card.

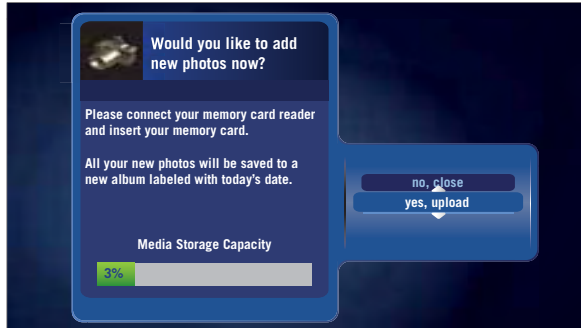


Figure 24: Uploading photos to the media center

Viewing photos

In the **Photos** category, scroll to the album you want to play, and then choose an option.

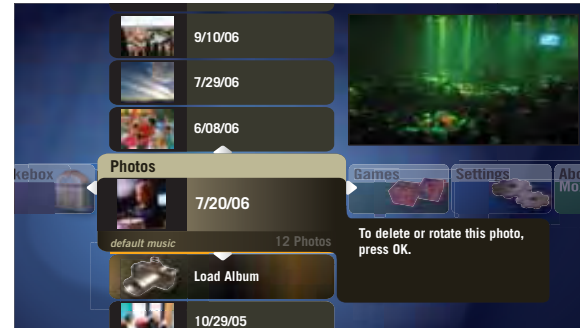


Figure 25: Browsing photo albums

Photos are shown at the highest allowed resolution. (See *HDTV Setup* on page 30 for more information on setting TV resolutions.) Photos are sized to fit the screen without stretching them (the aspect ratio remains correct).

- **Play slideshow** — Plays all photos in the selected album. During the slideshow, each photo appears for about seven seconds. You may use the playback controls to manually control the slideshow. The slideshow plays continuously until you press stop.
- **Open album** — Views a single photo within an album. Scroll to the photo, and then press **OK**.
- **Delete album** — Removes the photo album (there is no undo).

- **Slideshow music** — If you have Jukebox, you can select a saved music playlist to accompany the slideshow. Select **slideshow music**, and then choose a music playlist.

While viewing photos in an album or during a slideshow:

- Press fast-forward or rewind to speed up or slow down the slideshow.
- Press **pause** to halt the slideshow in the current picture.
- Press the right arrow, **skip**, or **next** to advance to the next photo.
- Press the left arrow, **replay**, or **back** to return to the previous photo.
- When the flip bar is open, press **OK** to see editing options for the photo or the album. The **info** button also opens the editing menu.



If you use PC Link, shared media have the link icon in the upper right.



Creating a playlist for a photo album with PC Link

First you need to create a playlist. On your PC, you can create a playlist using a media player that supports .m3u (used by various media players) or .wpl (Windows Media Player) playlist file formats. The playlist and its music files must be in folders that are shared through Windows Media Connect to play on your media center. You can also create playlists from music stored locally on your media center by adding the music to a queue and saving that queue as a playlist.

To assign your playlist to a photo album, go to the album on your media center. Select **slideshow music**, then select the playlist you would like to have assigned to it.

Using Media Player

Some models of the media center include a DVD player that allows you to watch DVDs or play audio CDs on either the media center or the Moxi Mate, if available.

To play a movie:

1. Press the eject button on the media center or, in the Moxi Menu, select the **Media Player** category, and then choose **eject** or **open tray**.
2. Insert the DVD in the tray, and then press the eject button on the media center or, in the Moxi Menu, select the **Media Player** category, and then choose **close tray**.
3. The DVD should begin automatically. If it does not, select the **Media Player** in the Moxi Menu, press **OK**, and then select **play**.

Once the DVD is playing, press **OK** to open the flip bar, and then press **OK** again to access the DVD controls without interrupting the movie.

If the DVD contains rating information, the media center enforces your parental control settings. (To learn more about parental controls, see *Parental Controls* on page 35.)



You can watch the DVD on either the media center or the Moxi Mate, but you cannot watch it simultaneously on both.

all DVRs were not created equal

DVD video resolutions

Since the native resolution of DVDs is 480i, the media center automatically plays DVDs in either 480p or 480i, depending on your selections in the **HDTV Setup** category. The media center automatically upconverts to 480p if 480i is not selected in the **HDTV Setup** category.



The DVD player in the media center cannot upconvert to 720p or 1080i or play HD-DVD or Blu-Ray discs.

DVD copyrights

To protect the copyrights of movie creators, you cannot watch DVDs on a TV connected to the media center with IEEE 1394 or record DVDs to a VCR connected with IEEE 1394.

Using Jukebox

Jukebox allows you to play music using your media center, TV, and home theater equipment. If PC Link is enabled (see *Enabling PC Link* on page 53), you may play music stored on your personal computer.

2



Figure 26: Selecting an album to play in Jukebox

The Jukebox category contains a list of your music sorted by album, genre, or artist. To change how the list is displayed:

1. Select the listing you want from the action menu that appears after choosing **Jukebox Options, change view**.
2. Press **OK**.

You can also choose to shuffle play all your music, or play it all in order. (There may be a delay when first playing a large catalog of music via PC Link.)

Loading music

If you have a media center with a CD/DVD drive:

1. Press **eject** on the front panel of the media center or choose **eject** from the **Media Player** category.
2. With the label side up, insert the audio CD into the CD/DVD drive.
3. The media center immediately begins playing and importing the audio tracks.



Some fairly common albums or new releases may not be recognized and will be shown as "Unknown Album," rather than displaying the album name and track names. This is caused by gaps in third-party data. The songs are still imported.

The media center uses a partition of the hard drive reserved for photos and music so uploading music does not decrease the amount of TV you can record. You can change the default behavior when you insert a CD. See *CD Options* on page 35 for more information.

To load music on your computer:

1. Load the unencrypted MP3 files on your computer. Make sure they are stored in a folder shared by Windows Media Connect.
2. Check the **Jukebox** category in the Moxi Menu for the songs.

Playing music

To play music, scroll to the album, artist, or song, and then press **OK**. Choose **play** from the action menu. After a few minutes, a full-screen animated jukebox appears to prevent TV screen burn-in.

Creating a queue

1. Navigate to the album, artist, or song, and then press **OK**.
2. Choose **add to queue** from the action menu.
3. Once you add all the songs you want, go to the **Queue** card, and then press **OK**.
4. Choose one of the following actions:
 - **Save** — creates a playlist (see *Creating a playlist* below).
 - **Shuffle play** — plays all songs in the queue in random order.
 - **Close** — exits to the Jukebox category.
 - **Clear** — deletes all songs in the queue.



Songs shared to the media center via PC Link cannot be added to the queue.

all DVRs were not created equal

Creating a playlist

1. Open the queue card, and then select **save**.
2. A new action dialog opens and prompts you to enter a name for the playlist.
3. Press the right arrow until save is highlighted, and then press **OK**. The playlist now appears in the main Jukebox category.



If you use PC Link, shared songs have the link icon in the upper right when viewed in the Moxi Menu.



Reading service messages

Occasionally, your service provider may send service messages directly to your media center. These messages could cover topics such as upcoming software updates, future programming, or anything else related to your use of the media center. When you have a service message, the message light on the front panel of the media center is lit.

To read the message:

1. Press the **Moxi** button to open the Moxi Menu.
2. Scroll to the **Service Message** category.
3. Use the up or down arrows to select the message, and then press **OK** to open it.
4. Use the **next** and **back** buttons to page through the message.

Once you have read the message, you can choose to exit the message, mark it as unread, or delete it.

Playing Moxi games

There are several games available to you in the **Games** category. Each game includes on-screen playing instructions. The current games include:

2

Slot Machine



Solitaire





Code Breaker



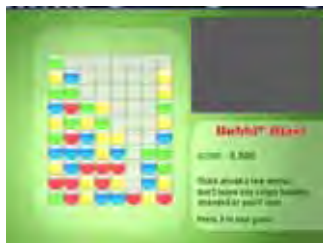
Blockbreaker



Mahjong



Invasion Wave



Bubble Blast



Blackjack



Video Poker



21 Frenzy



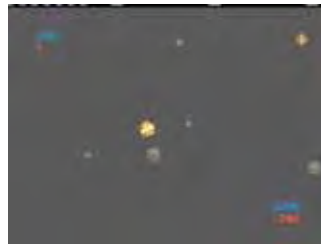
Bowling



Ping



Tomato



Blast it

The next steps

- To customize Moxi to suit your equipment and configuration, see *Changing settings* on page 29.
- See *Using and programming the remote* on page 41 to learn how to configure the remote for your TV.
- To set up PC Link, see *Enabling PC Link* on page 53.
- Do you have a specific question? Use the *Glossary* on page 93 and *Index* on page 97 to find the answer.

Changing settings

Channel List.....	30
Sound Effects	30
HDTV Setup.....	30
Widescreen.....	32
Audio Output	33
Secondary Audio	34
Closed Caption.....	34
Skip settings	34
CD Options.....	35
Parental Controls	35

The Settings category is where you customize the default media center settings to suit your needs.

Channel List

The Channel List card displays all available channels. You can modify the list if there are channels you never watch, or do not want to appear in the main **Channels** category after you press the Moxi button you can modify the list. To modify the list:

1. To remove (or restore) a channel, go to the **Channel List** card in the **Settings** category, if you are not already there.
2. Scroll up or down to the channel you want to remove or restore.
3. Press **OK**.

That channel no longer appears in the main **Channels** category or, if you restored it, appears once again.

Sound Effects

You can adjust the volume for those sounds you hear every time you push **OK**, **pause**, or most any other button on the remote. You can choose between three volume levels or mute them entirely.

1. To change the sound effects setting, go to the **Sound Effects** card in the **Settings** category.
2. Choose the desired output setting, and then choose **close**.



Figure 27: Adjusting the sound effects volume.

HDTV Setup

The media center automatically adjusts the video output to match the broadcast format and the selections you make in the **HDTV Setup** card.

The video resolution options are 480i, 480p, 720p, and 1080i. Always use the best resolution allowed by your TV, the video cable between the media center and TV, and the broadcast. See table 1 to learn which resolutions are supported by which cables.

Table 1: Video connections and supported resolutions

Connection	480i (SD)	480p	720p	1080i
DVI-D digital video	X	X	X	X
Component video (YPbPr)	X	X	X	X
S-Video	X			
Composite video (V)	X			
RF (some models)	X			
IEEE 1394 (does not show user interface graphics or DVDs)	X	X	X	X

For more information on video cables, see table 4 on page 63.



If you select a video resolution in error and the screen goes blank, do not push any buttons, but wait about thirty seconds for video to come back. If it does not, see *No video displayed* on page 72 to fix it.

Setting standard TV video resolution

If your TV is a standard definition (SD) TV, make sure 480i is the only box checked. All other video resolutions will be output at 480i. You can still watch HD channels and they may look considerably better than their SD counterparts.

Setting HDTV video resolution

The media center outputs video in its native format or adjusts the video to match your video resolution settings.

To get the most out of your HDTV, check the manual that came with it. The manual specifies which video resolutions the TV can display. Some TVs only display one video resolution while others can show many.

1. Go to the **HDTV Setup** card in the **Settings** category.
2. Check a resolution your TV supports.
3. Once the video switches to the new resolution, choose **yes**.
4. Continue selecting each video resolution your TV supports.
5. Choose **close**.

Widescreen

The widescreen settings only take effect if the broadcast is presented in 16:9, or widescreen, format.

Letter box — Shrinks a widescreen picture to fill the screen and puts black or gray bars at the top and bottom of the screen. This is the best choice if you have a standard TV.



Figure 28: Letter box mode on standard (4:3) and widescreen (16:9)

Cropped — Fills the entire screen with the picture by cropping out the left and right edges of the picture. This is an alternative setting for standard TVs.

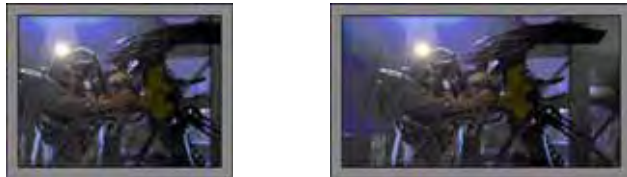


Figure 29: Cropped mode on standard (4:3) and widescreen (16:9)

Wide mode — Horizontally squeezes widescreen video (16:9) to fit a standard TV (4:3). Choose this if you have a TV capable of showing widescreen programs correctly (in the original 16:9 aspect ratio).



Figure 30: Wide mode on standard (4:3) and widescreen (16:9)

Each setting affects the aspect ratio of the show on your TV differently and could even have a different effect on the commercials airing during a show. You may have to experiment to find the best setting for your TV and viewing habits.



Some TVs have built-in widescreen settings. Check the user guide that came with your TV for more information.

To use Moxi to change the widescreen settings

1. Go to the **Widescreen** card in the **Settings** category.
2. Choose the desired output setting, and then choose **close**.

Audio Output

Change the audio output type to match your audio connection and equipment (see table 2).

Table 2: Audio connections and selections

Audio connection	Preferred selection
S/PDIF (coaxial or optical)	Dolby Digital
RCA (red and white)	Stereo
RF (some models)	Mono

The media center can output sound in Dolby Digital, stereo, or mono.

1. To change the audio setting, go to the **Audio Output** card in the **Settings** category.
2. Choose the desired output setting, and then choose **close**.

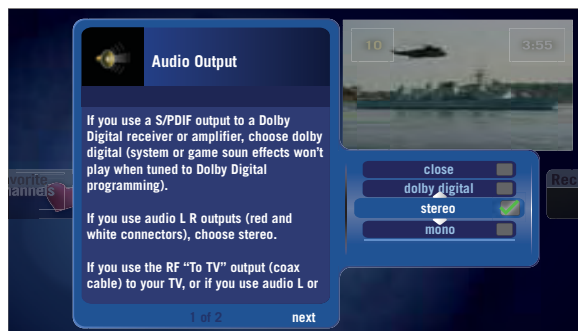


Figure 31: Changing the audio output



System and game sound effects do not play when audio output is set to Dolby Digital.

Secondary Audio

When you watch a TV that includes a secondary audio program (SAP), usually in a different language, the media center can pass that secondary audio stream to your TV or audio receiver.

1. To enable or disable SAP, go to the **SAP** card in the **Settings** category.
2. Choose **enable** (or **disable**), and then chose **close**.
3. Change to the channel carrying the secondary audio stream.
4. To hear secondary audio on digital channels, open the flip bar, press **OK**, and then choose **language** from the action menu.

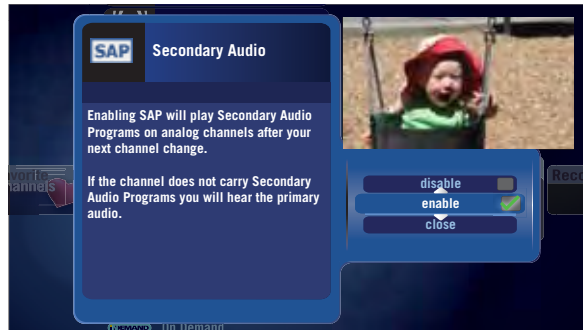


Figure 32: Enabling or disabling SAP

Closed Caption

Most viewers use these setting to toggle closed captions on or off.

There are additional settings that may be used on digital streams that enable them.

Skip settings

Pressing the **skip** button on the remote moves you forward in recorded or stored programs in set increments. Change the increment by adjusting the skip options in the **Settings** category.



The skip option is not available in all markets.

Choose one of the following:

- 30 seconds
- 3 minutes
- 5 minutes
- 15 minutes



Figure 33: Skip settings card

PC Link Setup

PC Link connects your media center to home computers. When connected, shared photos and music stored on the computer are listed in the Photos and Jukebox categories in the Moxi Menu, just like photos and music loaded directly on the media center.

See *Enabling PC Link* on page 53 for more information.

CD Options

The CD Options allow you to customize how the media center responds when you insert an audio CD in the disk drive.

- Auto play — automatically plays a CD when inserted.
- Auto import — automatically imports a CD to Jukebox when inserted.
- Auto eject — automatically ejects a CD once it is imported or played.

Parental Controls

The parental control functions provided by the media center are robust. By setting a four-digit personal identification number (PIN), you can lock programming by rating or channel.

The media center still records scheduled shows blocked by parental controls but you must enter the PIN before you can watch them.



In households with the Moxi Mate, parental control settings and PIN apply to both TVs but turning parental controls off at one TV does not turn them off at the other.

Creating a PIN

The first time you use parental controls, the media center asks you to create a PIN.

1. In the **Settings** category, scroll to the **Parental Controls** card.
2. Press **OK**.
3. Use the number keys on the remote to enter a four digit PIN, and then enter the PIN again to confirm it.
4. Choose **close**.

Changing a PIN

1. In the **Settings** category, scroll to the **Parental Controls** card.
2. Press **OK**.
3. Choose **settings**.
4. Scroll left to the **Change PIN** card, and then press **OK**.
5. Enter the old PIN.
6. Enter the new PIN, and then enter the new PIN again to confirm it.

Locking channels or programs by rating

1. In the **Settings** category, scroll to the **Parental Controls** card.
2. Press **OK**.
3. Choose **settings**.
4. Choose either **TV Ratings**, **Movie Ratings** or **Lock By Channel**. Each card contains a list of the rating system or a list of channels. Scroll to the format or channel you want to control.

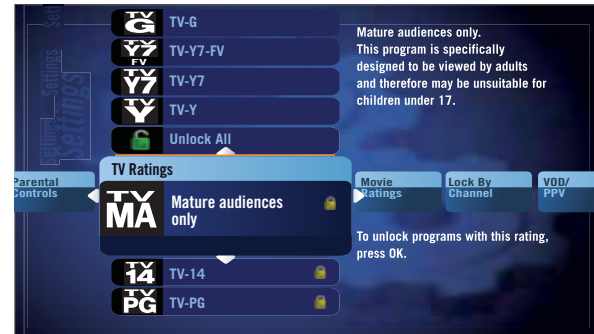


Figure 34: Controlling movie ratings

5. Lock the rating or channel by choosing it, and then pressing the **OK** button on the remote. In figure 34, TVMA, TV14, and TVPG are locked.



When you lock a rating, all ratings for more mature audiences are also locked. For example, lock TVPG and TV14 and TVMA are also locked. When unlocking, the reverse is also true.

6. Choose the **Back** button to exit parental controls and return to the Moxi Menu.

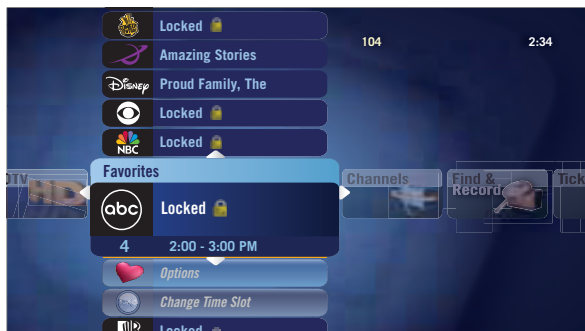


Figure 35: The Favorites category with locked programs

When parental controls are turned on, the names of all locked programs are replaced with "Locked" regardless of where they are listed (Moxi Menu, flip bar, Find & Record, and so on).

i If the V-Chip in your TV is enabled, you may see a black screen after tuning to a channel with blocked content. No Moxi Menu, flip bar, sound effects, or any other audio or video are shown or heard. To correct this, change to an unblocked channel, or disable all V-Chip functions and use the parental control features provided by Moxi to regulate viewing.

Turning off parental controls

1. Press **OK** on any locked program.
2. Enter your PIN to unlock all programming temporarily or choose **more options** to only unlock the current channel.

To unlock or change all parental control settings, go to the **Settings** category, scroll to the **Parental Controls** card, and then press **OK**.

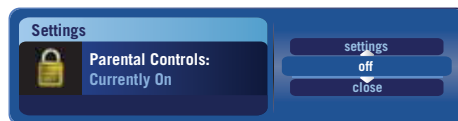


Figure 36: Disabling parental controls

Setting the unlock timer

While configuring parental controls, you can specify how long to leave parental controls unlocked.

1. In the **Settings** category, scroll to the **Parental Controls** card, and then press **OK**.
2. Choose **settings**.
3. Scroll left to the **Set Relock Timer** card, and then press **OK**.
4. Enter your PIN, if prompted.
5. Choose the unlock duration of between one and six hours (see figure 37). This option appears anytime you unlock parental controls.

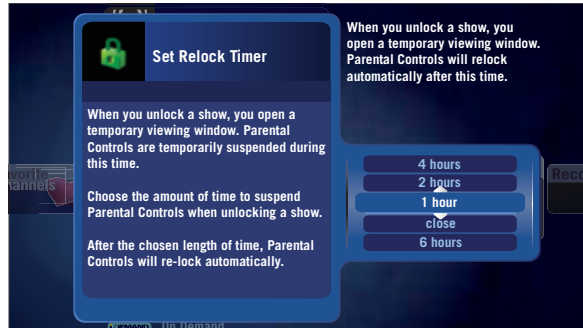


Figure 37: Setting the relock timer

Once set, the **Parental Controls** card category displays the relock time (see figure 38).

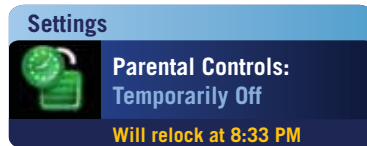


Figure 38: Relock time

Controlling Pay Per View or On Demand purchases

To restrict the purchase of Pay Per View or On Demand programs, use the same PIN as with parental controls. See *Creating a PIN* on page 35 for more information on creating a PIN.

1. In the **Settings** category, scroll to the **Parental Controls** card, and then press **OK**.
2. Choose **settings**.
3. Scroll to the **On Demand / Pay Per View Purchases** card, and then press **OK**.
4. Enter your PIN to require that the PIN be entered whenever a purchase is made.

If you forget your PIN

If you forget your PIN:

1. Call your cable provider.
2. After the representative resets the PIN, create a new one right away (see *Changing a PIN* on page 36).

The next steps

- To learn how to use the Moxi Menu, see *Using Moxi* on page 7.
- See *Using and programming the remote* on page 41 to learn how to configure the remote for your TV.
- To set up PC Link, see *Enabling PC Link* on page 53.
- For help, see *Troubleshooting* on page 71.
- Do you have a specific question? Use the *Glossary* on page 93 and *Index* on page 97 to find the answer.

Using and programming the remote

Functions of the Moxi remote	42
Programming the remote.....	44
Infrared emitter	46

This chapter provides information about remote functions and programming.

Functions of the Moxi remote

The Moxi remote operates the media center, and—once programmed—will simultaneously control the power, volume, and mute functions of your TV or audio receiver.

Your cable operator may supply a different remote. If your remote does not look like the one pictured in figure 39 on page 43, refer to the information provided with that remote for programming instructions.



When replacing batteries, use only high quality, non-corrosive batteries designed for use in electronic equipment.

Multi-function buttons

Some buttons have different functions depending on what application you are using, whether you are watching live TV, or navigating the Moxi Menu. For example, the ch+ button pages through the channels category in the Moxi Menu but opens the flip bar and switches to the next channel while watching live TV. See figure 39 on page 43 for details on all the buttons and functions.

* locks and unlocks SuperTicker items
ticker displays and hides SuperTicker
power turns the TV and audio receiver on and off
on demand jumps to the On Demand category
live TV jumps to full-screen live TV

play starts a recorded program, song, or album
rew multi-speed rewind for playback (press multiple times to select speed)
fwd multi-speed fast forward for playback (press multiple times to select the speed)
rec starts a recording
stop stops a program, song, or album
pause pauses a live or recorded show, song, or album (press pause, then fwd for slow motion)
replay jumps back seven seconds, moves the Moxi Menu back one day
skip jumps ahead in stored or recorded video, moves the Moxi Menu forward one day

number keys tune directly to channels, enter text in menus, make choices in games
1 press twice to backspace during text entry
0 press twice to add a space during text entry
clear deletes all entered text, deletes shows from Recorded TV, and dismisses the Moxi Menu and Flip Bar
enter applies numeric or text entries



info displays additional information about the selected item
zoom toggles between an open Moxi Menu and full-screen TV without losing menu position
arrow up, down, right use to navigate menus, play games (hold for turbo speed)
arrow left exit most menus, navigate menus, play games (hold for turbo speed)
OK selects or activates the selected item
back jumps back 15 minutes, shows last note page, jumps 30 minutes in the Moxi Menu, or goes to the previous photo
next jumps back 15 minutes, shows last note page, jumps 30 minutes in the Moxi Menu, or goes to the next photo
MOXI opens and closes the Moxi Menu from most places (two presses might be required)

vol adjusts the audio volume on the TV or audio device
mute toggles sound on and off
jump goes to the last viewed channel
ch changes channels or pages through vertical menus (hold for turbo speed)

Figure 39: The Moxi remote

Programming the remote

Before you begin, find the codes for your TV from the table starting on page 78. Write it here:

If you have an audio receiver, find the codes in the table starting on page 85. Write it here:

Use one of the following procedures:

- *Programming with codes*
- *Programming by search* on page 45 — use this if your brand is not listed or if the given codes do not work.

Programming with codes

Follow these steps to program the remote to control TV power and volume.



Some older devices may not be supported. If the device fails to respond to any code, use its original remote to control it.

1. Turn on the TV or audio device you want to control.
2. On the Moxi remote, press and hold the **Moxi** and **OK** buttons simultaneously until the LED at the top of the remote blinks twice.
3. Using the number buttons on the remote, enter one of the codes for the TV. When you enter the correct code, the LED blinks twice. If it blinks once, the code was invalid—try another code.
4. Press the **Power** button on the remote.
5. If the TV does not respond, repeat steps 2 and 3 using another listed code. Repeat until successful, or use *Programming by search* on page 45.
6. To program the remote to control TV power plus power and volume for an audio device, turn on the audio device you want to control.
7. Repeat Step 3 using the code for the audio device.
8. Press the **Power** button on the remote. If you programmed two devices, both turn off.
9. If the TV or audio device does not respond, repeat steps 2 and 3 using another listed code. Repeat until successful, or use the *Programming by Search* procedure.

Programming by search

If the TV or audio device is not listed, or the codes listed do not work, try programming by search. Programming by search allows the remote to cycle through codes to find one that works with the TV or audio device.

Once programmed with two device codes, the remote controls volume and mute for the second device. Follow these steps to program the remote to control audio device power and volume.



Some older devices may not be supported. If the device fails to respond to any code, use its original remote to control it.

1. Turn on the TV or audio device you want the remote to control.
2. On the Moxi remote, press and hold the **Moxi** and **OK** buttons simultaneously until the LED at the top of the remote blinks twice.
3. Using the number buttons on the remote, press **9 9 1 0** for the TV, or **9 9 1 1** for the audio device. The LED light blinks twice.



To reset the remote to the original factory setting, enter code **9 9 9 9**, and then press **OK**.

4. Press the **Mute** button.
 - If this mutes the device, go to step 5.
 - If this does not mute the device, press the **up** arrow to advance to the next code, and then press **Mute** again. Repeat until the device responds.
5. Press **OK** to set the current code and finish.

Infrared emitter

When a button on the remote is pressed, the infrared signal is sent to an IR receiver. The receiver then transmits the signal to the IR emitter (IR blaster), which sends commands to electronic components.

For the IR emitter to send its signals to the media center, it must have a clear view of the infrared receiver on the front panel of the media center. To see the receiver, shine a flashlight at the media center front panel, to the right of the clock (see figure 40). Refer to the documentation provided by the manufacturer of the IR emitter for proper installation and orientation.

The infrared frequency used for IR signals between the remote and media center is 38 KHz.



Figure 40: Infrared receiver on the media center front panel

The next steps

- **Get the codes.** See *Moxi remote programming codes* on page 77.
- **Do you have a specific question?** Use the *Glossary* on page 93 and *Index* on page 97 to find the answer.

Adding additional recording space

Using an external hard drive	48
Archiving simplified	49
Archiving to a VCR or DVCR	50

This chapter describes how to connect an external hard drive, VCR, or other recording device, to add additional drive space or archive shows recorded on the media center. If you have the External Hard Drive card in the Settings category, continue to *Using an external hard drive* below. Otherwise, skip to *Archiving simplified* on page 49.



Programs protected by Macrovision copy protection may not be archived to a VCR.

Using an external hard drive

To provide additional space for recorded programs, you may connect one external hard drive at a time to the rear USB 2.0 port on the media center to provide additional space for recorded programs. Once the media center recognizes the external hard drive, programs stored on it appear in the **Recorded TV** category and any other applicable categories.

- There is no limit to the number of external hard drives you can associate with the media center but only connect one at a time.
- External hard drives used with the media center must be dedicated for use with only that media center. Moving the external hard drive between media centers or using it for storing other data will cause the loss of all programs previously stored on the external hard drive.
- The external hard drive is only used to store recordings, not photos or music. If you need more storage space for photos or music, see *Enabling PC Link* on page 53.

- The Moxi Menu does not provide any visual clues about which hard drive (internal or external) contains a recording.

Connecting an external hard drive

1. Connect an external hard drive to a USB 2.0 port on the rear of the media center. Connect the hard drive directly to the media center. USB hubs are not supported.
2. Wait for media center to recognize the external hard drive. If the media center fails to recognize the external hard drive, restart the media center and try again.
3. If this is the first time this hard drive was plugged into this media center, or if the hard drive is not properly formatted, the media center prompts you to format the hard drive.



If you choose to format the external hard drive, all data on the drive will be deleted. You must do this to use the external hard drive with the media center.

4. If you choose **reformat**, you are prompted to confirm the choice.
5. Once the external hard drive is recognized as properly formatted and ready for use, the media center adjusts the recording schedule to account for the additional space. You can unplug and plug in the external hard drive as needed.

Disconnecting an external hard drive

If an connected external hard drive is disconnected while it is in use (a recording is playing or a program is being recorded) recordings stored on it may become corrupted. To disconnect the external hard drive:

1. Manually stop all recordings by selecting the program card in the Moxi Menu, and then choosing **stop recording**.
2. In the **Settings** category, select the **External Hard Drive** card.
3. Select **disconnect** and press **OK**.
4. A note appears letting you know that it is ok to disconnect the drive or that the drive is in use and cannot be disconnected.

Recovering corrupted programs

In certain circumstances, such as after a power failure, a message asking you to reformat your external hard drive may appear even when the external drive is already formatted for your Moxi. Your recordings may be recoverable.

1. Select **Close** to dismiss the message.
2. Switch the external hard drive off.
3. Switch the external hard drive on.
4. Wait until all disk activity stops. This may take several minutes but it indicates that Moxi is attempting to resolve the file corruption.
5. Check the **Recorded TV** category for recovered recordings. If they do not appear, repeat this procedure once more. If they still do not appear, the recordings are corrupt and the external hard drive must be reformatted.

Archiving simplified

To archive a program, play back the recorded program while recording with the connected recording device. When recording to a VCR from any port all on-screen activities are recorded. This includes channel changes, navigation of the Moxi Menu, system sounds, and transport actions (pause, stop, rewind, and fast-forward).

When installing any secondary device, such as a VCR, do not insert the device in the primary signal path between the media center and the TV, as this may affect the video and audio displayed on the TV. Instead, use a secondary video input to the TV for the VCR (see figure 41). If the content is protected by copy protection systems, the picture may still appear distorted.

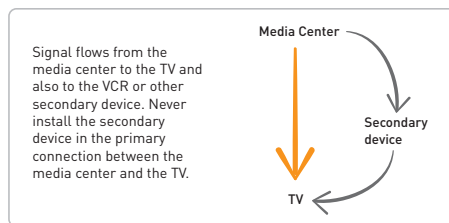


Figure 41: Signal flow from the media center

Choosing the connection

Variations in VCR and TV technology present many connection options. Determine which connection is used between the TV and the media center and use an alternate connection to the VCR.

When selecting the connections, consider the video resolution.

- If you plan to record HD programming to the VCR, use a connection that supports 720p and 1080i.
- If you plan to record in standard definition (480i), use any video connection except the one used by the TV. See table 3 for the resolutions supported by each connection.

Table 3: Video connections and supported resolutions

Connection	480i	480p	720p	1080i
DVI-D	X	X	X	X
Component (YPbPr)	X	X	X	X
IEEE 1394	X	X	X	X
S-Video	X			
Composite (V, L, R)	X			
RF (some models)	X			

Archiving to a VCR or DVCR

The installation instructions in this document are generic and may need to be adjusted to suit the your equipment. Refer to the VCR manufacturer's documentation before installation.

i Always maintain an uninterrupted primary video connection directly from the media center to the TV.

Using a digital VCR to archive programs

1. Connect one video cable between the media center and the VCR.
 - a. Connect component cables if they are not already used for the TV.
 - b. Use composite cables if component is not available.
 - c. Use IEEE 1394 if your VCR and media center support it.

i Use an IEEE 1394 connection to the TV as a secondary connection only. No user interface graphics are transmitted via IEEE 1394. Recordings made via IEEE 1394 include any channel changes and use of the playback controls.

- d. If IEEE 1394 is not an option, use component if it is not already used for the TV.
 - e. Use composite if component is not available.
2. Unless you used IEEE 1394 or HDMI, which carries audio and video, connect an audio cable between the media center and your VCR. Use S/PDIF or composite.

3. Connect another set of audio and video cables between the VCR and the TV.
4. Play the recorded program while recording with the VCR.

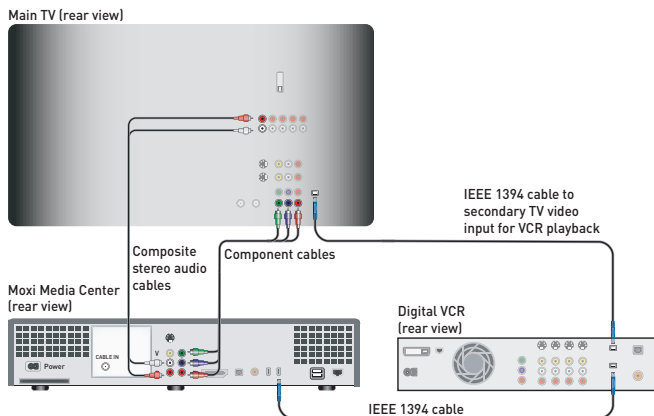





Figure 42: Example of connections between the media center and DVCR

The TV now has at least two sets of video cables: one to watch live or recorded programming from the media center, and another to watch recorded programming from the VCR.

There are several IEEE 1394 connector options. Make sure you have a cable with the large 4-pin or 6-pin connector at one end for the media center and, at the other end, a connector that fits the digital VCR (see figure 43).

There are three types of IEEE 1394 connectors:

-  6-pin powered
-  4-pin unpowered (used on media center)
-  4-pin (used on many digital media devices)

A cable with a 6-pin connector works in the larger 4-pin port but does not supply power to the secondary device.

Figure 43: IEEE 1394 connector types

The next steps

- If you have not already, go schedule some recordings. See *Using Moxi* on page 7.
- For help, see *Troubleshooting* on page 71.
- Do you have a specific question? Use the *Glossary* on page 93 and *Index* on page 97 to find the answer.

Enabling PC Link

System requirements	54
Connecting to the network	54
Setting up your computer	54
Playing shared music or photos	57

This chapter details how to share photos and unencrypted MP3 files from networked computers with your media center.



PC Link is an optional feature not available in all areas.

PC Link connects your media center to computers on your home network. When connected, shared photos and music stored on the computer are listed in the Photos and Jukebox categories in the Moxi Menu, just like photos and music loaded directly on the media center. You can play them on the TV but you cannot delete or modify the media stored on the computer from the media center.

System requirements

To share media with your Moxi Media Center, your computer must meet the following requirements:

- Run Windows Vista or Windows XP® SP2
- Be connected to the same home network and subnet as the Moxi Media Center

Connecting to the network

If the media center is not yet connected to the home network, see *Connecting to the home network* on page 66.

To enable PC Link:

1. In the Moxi Menu, go to the **Settings** category, and then choose the **PC Link Setup** card.
2. Press **OK**, and then scroll to the **Network Status** card.
3. If the card says *Connection: Good*, and has a valid IP address, proceed to *Using Windows Media Connect* on page 56.
4. If the card says *Connection: Error* and has no IP address, choose **Reconnect**. After a few seconds the screen will refresh. If you still cannot connect, troubleshoot your home network.

If you have problems getting the media center and computer to connect, see *Home network troubleshooting* on page 74.

Setting up your computer

Select one of the following file sharing applications. The applications are listed starting with the most preferred.

- Windows Vista or XP with Windows Media Player 11 on page 55
- Windows XP with Windows Media Connect on page 56

Using Windows Media Player 11

If you have Windows Vista then Windows Media Player 11 is already installed on your PC. Skip to *Sharing with Windows Media Player 11*. If you have Windows XP see *Installing Windows Media Player 11* below.

Installing Windows Media Player 11

If you already have Windows Media Connect installed, and want to share photos, it is recommended that you do not install Windows Media Player 11 because Windows Media Player 11 places all photo albums into a single album. Go to *Using Windows Media Connect* on page 56.

1. Download Windows Media Player 11 from Microsoft at www.microsoft.com/windows/windowsmedia/player/11/default.aspx.
2. Install Windows Media Player 11 according to the instructions provided by Microsoft.
3. See *Sharing with Windows Media Player 11* below to configure Windows Media Player 11.

Sharing with Windows Media Player 11

1. After launching Windows Media Player 11 select **Tools**, then **Options**, and then select the **Library** tab.
2. Click **Configure Sharing**. Check the **Share my media to:** checkbox.
3. Select the device with which you want to share your media, and then click **Allow**. The Moxi Media Center appears as "Moxi Media Renderer" with a unique alphanumeric code (see figure 44).



Figure 44: Using the Media Sharing screen

4. Click **OK** or **Apply**, and then click **OK** again to close the Options window.
5. At the media center, in the Moxi Menu, go to the **Settings** category, and then choose the **PC Link Setup** card.
6. Press **OK**, and then scroll to the **Media Servers** card.
7. If the computer running Windows Media Player 11 is listed, you are finished and can play the shared media. If it is not listed, scroll left to the **Network Status** card, press **OK**, and then select **reconnect**.

Using Windows Media Connect

Windows Media Connect is not available for Microsoft Vista.

Checking and installing Windows Media Connect

If you already use Windows Media Connect, make sure the software is up to date.



To distinguish Windows Media Connect 1.0 from 2.0, open Windows Media Connect, and then click **Help**. The first paragraph states the software version.

To install or upgrade Windows Media Connect:

1. At the computer with the photos or music you want to share, go to www.microsoft.com/downloads and search for Windows Media Connect. Microsoft may choose to stop offering Windows Media Connect at any time.
2. Download and install Windows Media Connect according to the instructions provided by Microsoft.

Connecting to the media center

At the computer:

1. Launch Windows Media Connect if it is not already running.
2. When Windows Media Connect launches, you are prompted to select the device you want to allow to access your computer. Select the Moxi Media Renderer, and then click **Allow**.

3. Click **Next**, and then choose which folders to share with the Moxi Media Center.
4. Click **Finish**. Windows Media Connect minimizes itself to the taskbar and begins indexing the shared folders. A balloon pops up from the toolbar alerting you that the computer is now sharing available media. If you are sharing a large number of files, it may take several minutes for the balloon to appear.

At the media center:

1. In the Moxi Menu, go to the **Settings** category, and then choose the **PC Link Setup** card.
2. Press **OK**, and then scroll to the **Media Servers** card. Your shared computer should be listed. If it is not, check to make sure your home network is configured correctly. If your shared computer is listed as busy, the computer is probably still indexing files. Wait a few minutes, and then check again.
3. Windows Media Connect is a Microsoft product and is supported by Microsoft at www.microsoft.com.

Playing shared music or photos

To play shared music, go to the Jukebox category. For shared photos, go to the Photos category. See *Using Photos* on page 20 for more information on photos.

Scroll vertically to the photo, song, album, or playlist with the link icon and select it to play the media. See *Using Jukebox* on page 23 for more information on Jukebox.

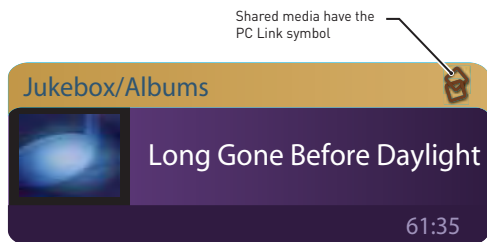


Figure 45: Link icon



Photo albums only share the first 75 images in any album. Windows Media Player 11 on Windows XP places all shared photos into a single album. Jukebox albums or playlists only share the first 100 tracks.

The next steps

- See *Using Moxi* on page 7 to learn how to play music and photos.
- Home networks can be complex. For help, see *Troubleshooting* on page 71.
- Do you have a specific question? Use the *Glossary* on page 93 and *Index* on page 97 to find the answer.

Getting connected

Before connecting	60
Ventilation requirements.....	60
Media center information	61
Media center illustrations.....	61
Moxi Mate information.....	62
Moxi Mate illustrations	62
Available ports.....	62
Connecting to the TV and receiver	65
Connecting to the home network.....	66

This chapter details connecting the set-top box to your TV and other home media equipment.

Before connecting

Before installing, the media center installation environment must meet the following physical requirements:



If you have a multi-room media center and Moxi Mate, and are moving either from their original installation room, a professional cable installer must make a service call to configure your home's coaxial cable network. If you have not already installed the low-pass filter reflector, do it now. See *Installing a low-pass filter reflector* on page 15.

- Locate the media center within six feet of a power outlet (do not use an extension cord).
- Use a surge protector to isolate the media center from power surges.
- Make sure the infrared receiver on the media center and the remote are free from obstructions, such as furniture and doors.

Ventilation requirements

To prevent overheating, allow adequate ventilation and airflow around the media center. The media center requires at least a two-inch (5 cm) clearance on top and all sides with airflow to the or rear.

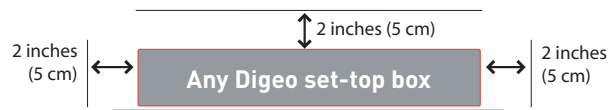


Figure 46: Ventilation requirements

Media center information

Moxi Media Center features:

- Dual analog and digital cable video tuners
- HDTV decoder
- Digital Video Recorder (DVR)
- Video outputs to DVI-D, component, composite, S-Video, and on some models, RF and IEEE 1394
- Digital audio (S/PDIF coaxial, optical) output
- Stereo audio output
- Two USB 1.1 (front) and two USB 2.0 (rear) connectors
- Clock display
- Front panel control buttons
- CD/DVD optical disk drive (on some models)
- Support for a second TV (on models compatible with the Moxi Mate)

Media center illustrations

The following illustrations of the media center show the front and rear panels and connections. Your model may differ slightly.

7



Figure 47: Media center front panel (some models differ)

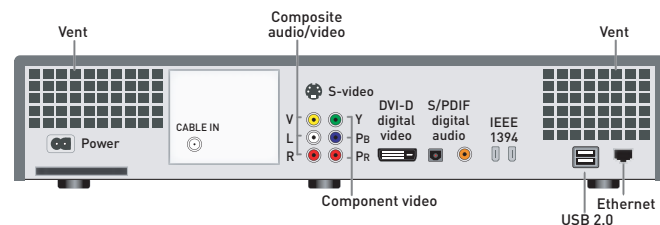


Figure 48: Media center rear panel (some models differ)

Moxi Mate information

Standard features include:

- Shared dual cable tuners, DVR, and CD/DVD drive with the media center
- Standard RF and Composite video with stereo audio outputs
- Front panel clock display and control buttons

Moxi Mate illustrations



Figure 49: Moxi Mate front panel

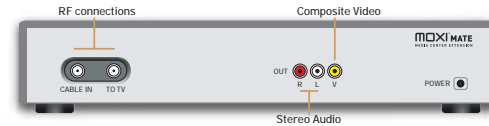


Figure 50: Moxi Mate rear panel and connections

Available ports

Before connecting the media center, consider the equipment to which it will be connected. Is your TV standard definition (SD) or high definition TV (HDTV)? Is there a receiver? If so, does it accept S/PDIF?

The characteristics of the connections offered on the media center are listed in table 4 (video cables) and table 5 on page 64 (audio cables).

Table 4: Video cables, starting with highest quality connection

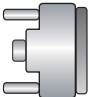


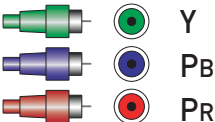



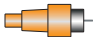







Connector shapes	Cable type	Description
	 DVI-D	A digital video connection capable of displaying 480i, 480p, 720p, and 1080i video resolutions from the media center. If 480i is not selected in HDTV Setup, video in 480i is automatically converted to 480p. If your TV has an HDMI port but no DVI-D port, you may use video output from the media center with a DVI to HDMI conversion cable. A separate audio connection is required.
	IEEE 1394	A high-bandwidth digital connection, sometimes called FireWire®. The media center provides an MPEG 2 audio and video stream for recording or display on a digital device in the same resolution as the broadcast. No user interface graphics appear (Moxi Menu, flip bar, and so on).
	Component	A three-wire analog video connection capable of displaying 480i, 480p, 720p, and 1080i video resolutions from the media center. Component is the most user-friendly HD and standard video connection for the media center.
	S-Video	An analog video connection with better quality than Composite. S-Video is capable of displaying 480i video from the media center.
	Composite or RCA	An analog video connection. Composite supports 480i video output.
	RF out	Basic analog connection supports 480i video output. (Available on some models only)

Table 5: Audio cables starting with highest quality connection

Connector shapes	Cable type	Description
 	S/PDIF (coaxial)	A digital audio connection that carries high-quality Dolby Digital audio.
 	S/PDIF (optical)	A digital audio connection that carries high-quality Dolby Digital audio.
 L   R 	RCA	An analog stereo audio connection.

Connecting to the TV and receiver

The media center supports multiple types of audio and video connections. It is recommended that you use the highest-quality connection supported by both the TV or audio receiver and the media center.

! Do not plug the media center into power yet.

- Place the media center in a well-ventilated open area near the TV and audio receiver (if used). Connect the incoming coaxial cable to the media center.
- Install one of the following video connections and refer to figure 51 for HDTVs or figure 52 for standard TVs on page 66:
 - For HD and supported TVs, connect a DVI-D cable between the media center and the HDTV.

i If a DVI-D cable or an HDMI to DVI conversion cable is used along with an intermediate device such as an audio/video receiver, video might not be passed through the intermediate device to the TV. If this happens, connect the media center directly to the TV.

- If a DVI-D connection is unavailable, connect component (YPbPr) cables for HDTV.
- For televisions where DVI-D or component is not an option, connect an S-Video cable, or go to option d.
- When a, b, or c is unavailable, use a composite video cable connected to the V port.

- Install one of the following audio connections:
 - For digital audio, connect an S/PDIF cable to the media center and receiver or TV.
 - For analog audio to the TV, connect composite stereo cables between the TV and the L and R ports.
 - For analog audio with a receiver, connect composite stereo cables between the receiver and the L and R ports.

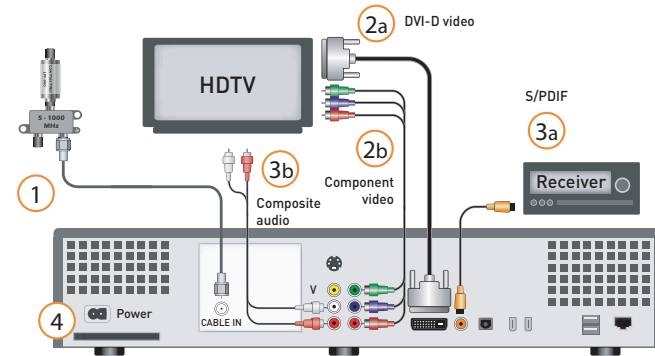


Figure 51: Connecting an HDTV or EDTV and digital audio

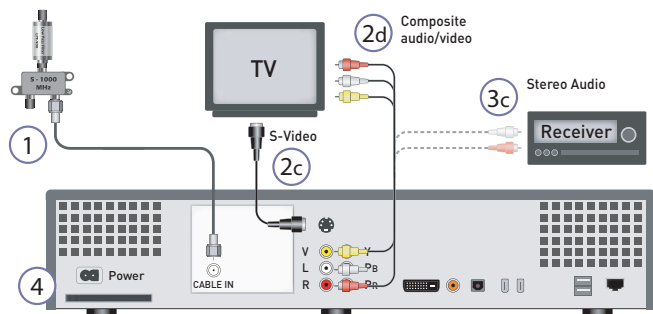


Figure 52: Connecting a standard TV (480i) and stereo audio

4. Plug in the power to start the media center (allow five minutes for system start-up).
5. Plug the TV and receiver (if used) into a power outlet. On some models, a two-prong outlet is available on the rear of the media center.



Do not connect the media center to a switched power source. Doing so increases the chance that the media center is turned off and is not able to record programs as scheduled.

Connecting to the home network

To enable PC Link, the media center needs a full-time connection to your home network. The connection can be wired (see below) or wireless (see *Wireless data connection* on page 67), although a wired connection is preferred.

Wired data connection

Connect a CAT-5 network cable with RJ-45 plugs between the Ethernet port on the rear of the media center and your home network. An Internet connection is not required for PC Link.

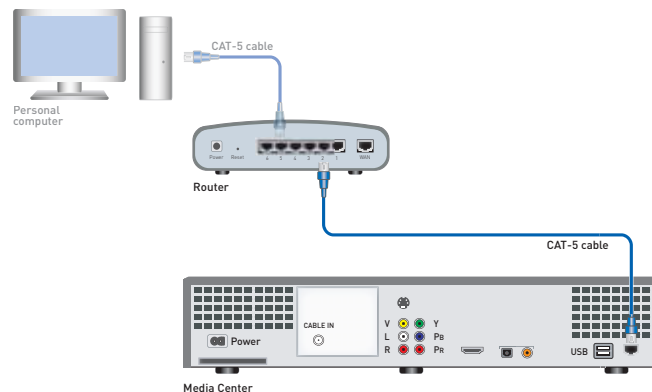


Figure 53: Wired home network connection to the media center

Wireless data connection

If a wired connection is not possible, connect the media center to a wireless game adapter or wireless bridge manufactured by the same company as your wireless router, see figure 54. An Internet connection is not required for PC Link.

! You must use the Ethernet port on the rear of the media center. A USB to Ethernet connection is not supported.

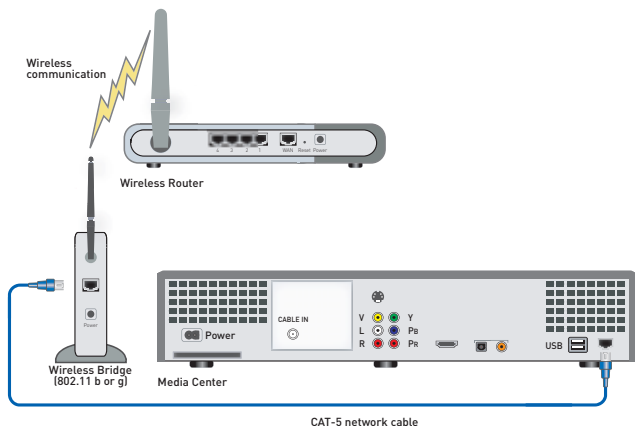


Figure 54: Wireless home network connection to the media center

Adding components

To add components to the TV connected to the media center, such as a DVD player or VCR, refer to the manufacturer's documentation for each device. For digital VCRs, see *Archiving to a VCR or DVCR* on page 50.

For other additional components, use a secondary connection to the TV. Do not interrupt the primary signal from the media center to the TV (see figure 55). If the content is protected by digital copyright protection systems, the picture on the additional component may appear distorted or not at all.

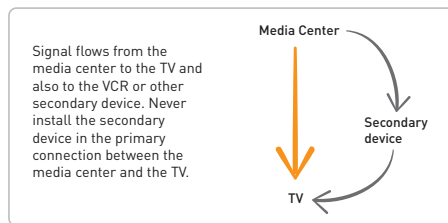


Figure 55: Installation of secondary components

Secondary digital monitors can be connected via the IEEE 1394 ports but do not display the Moxi Menu or any other user interface graphics

The next steps

- See *Using Moxi* on page 7 to learn more about the Moxi Menu.
- To set up PC Link, see *Enabling PC Link* on page 53.
- For help, see *Troubleshooting* on page 71.
- Do you have a specific question? Use the *Glossary* on page 93 and *Index* on page 97 to find the answer.

Troubleshooting

Media center troubleshooting	72
Moxi Mate troubleshooting	73

This chapter contains troubleshooting information for basic issues related to your media center or Moxi Mate. If these tips do not resolve the issue, contact your service provider for further assistance.

Media center troubleshooting

This section addresses issues related to the media center.

Audio and video problems

The following procedures address connectivity and configuration issues between the cable drop, TV, and the media center.

No video displayed

1. Check the cabling between the media center and the TV to make sure it is connected correctly and securely.
2. Verify that the TV has the proper video settings (line 1, channel 3, S-Video, and so on).
3. Verify that the V-Chip in the TV is disabled. Instead, use the parental controls on the media center to control viewing. See *Parental Controls* on page 35 for more information.

Use the front panel controls to manually set the video resolution.

1. Simultaneously press the **Live TV** and **OK** buttons to display the current mode.
2. Use the channel up and down buttons to select the mode. The modes available are SD (for 480i), 480p, 720p, and 1080 (for 1080i).

Static on screen or poor picture quality

1. Make sure the media center and the TV are turned on.
2. Check that all cables are connected to the proper ports and are secure.
3. Verify that the TV is tuned to the correct video input.

TV audio and video out-of-sync

1. Make sure the audio outputs from the media center are connected directly to the audio output device and are not passed through any intermediate device.
2. Reset the media center by pressing and holding the reset button until the LED display begins to change (starting with 0000). Allow about five minutes for the system to start.

Cannot change TV channels

1. Check the cabling between the media center and the TV.
2. Begin recording and then try changing the channel.
3. Bypass the media center and verify that the TV displays video. If not, there is a problem with the signal.
4. Make sure the remote has fresh batteries.
5. Make sure the remote is programmed properly and is set to the proper device mode. (See *Using and programming the remote* on page 41 for more information.)

Remote or front panel control problems

If you cannot control the media center with the front panel buttons:

- Try using the Moxi remote. If it works, call customer service for a replacement media center.

If you cannot control the user interface from the Moxi remote, but front panel buttons work:

- Make sure the remote has fresh batteries.
- Check the line of sight between the remote and the front of the media center for obstructions.
- If the media center responds sluggishly or intermittently to remote control key presses, the problem may be caused by the TV. Some TVs, including those with backlight systems, emit a frequency that interferes with the frequency used by the remote control (38 kHz). Try relocating the TV or media center so that the media center is well behind the TV.

Moxi Mate troubleshooting

This section provides troubleshooting tips for basic issues related to the Moxi Mate. If you cannot resolve the issue, contact your service provider.

Power problems

If the Moxi Mate does not display the time on the front panel, it is likely that it is not getting power.

- Ensure that the power cable is plugged into the Moxi Mate and the wall outlet.
- Use only the power supply issued with the Moxi Mate. Most Moxi Mates use a 7-Volt power supply.
- Make sure the wall outlet has power and is not controlled by a wall switch. Voltage must be within the 95 VAC to 125 VAC range at 57 Hz to 63 Hz.
- Try a different wall outlet.

Audio and video problems

The following items address connectivity and configuration issues between the TV and the media center or Moxi Mate.

- Make sure the media center, Moxi Mate, and the TV to which the Moxi Mate is connected are plugged in and turned on.
- Make sure the TV connected to the media center or Moxi Mate is set to the correct channel (usually 3 or 4) or input setting, and that the sound is not muted.
- Check that the coaxial and composite cable connections to make sure they are secure.
- Check all splitters to ensure that they allow the 1 GHz signals used for Moxi Mate communications to pass through. Splitters may have "5 - 1000 Hz" written on them.

Home network troubleshooting

If you are having trouble connecting the media center to your home network, check the following:

- Connect the media center to the home network through the Ethernet (RJ-45) port on the rear of the media center. USB network connections are not supported.
- Make sure DHCP is enabled in your router. Static IP addresses are not supported.
- When connecting the media center to your home IP network, a wired connection is best. Wired connections are not subject to the same interference as wireless connections.
- If you use a game adapter or ethernet bridge to connect wirelessly, any 802.11b, g, or n product works but is susceptible to radio interference.
- Make sure the media center and any computers sharing photos or music with PC Link are on the same subnet. Their IP addresses are the same except for the last number (192.168.2.2 and 192.168.2.3, for example).

If all network devices seem to be working but you have problems getting Windows Media Connect to share media with your media center (your computer does not appear as an available server in the Moxi Menu), follow these steps.

1. Right-click the network icon in the system tray.
2. Click **repair**, and then wait for Windows to fix the problem.

all DVRs were not created equal

If that does not correct the problem, do the following:

1. At the computer, click **Start**, and then **Run**.
2. Type `cmd`, and then press **Enter**.
3. In the command window, type `ipconfig /release`, and then press **Enter**.
4. Type `ipconfig /dnsflush`, and then press **Enter**.
5. Type `ipconfig /renew`, and then press **Enter**.
6. In Windows Media Connect, click the **Settings** icon. If sharing is enabled, click the **stop** button.
7. Click the **start** button to begin sharing.
8. After a few moments, your computer should begin sharing photos and music with the media center.

The next steps

- See *Using Moxi* on page 7 to learn more about the Moxi Menu.
- Do you have a specific question? Use the *Glossary* on page 93 and *Index* on page 97 to find the answer.

Moxi remote programming codes

TV Codes.....	78
Audio device codes.....	85

This chapter provides a listing of all programmable TV and audio device codes stored in the Moxi remote. See *Using and programming the remote* on page 41 for more information.

TV Codes

Use the codes in table 6 to program the remote for your TV.

Table 6: TV codes

TV	Code
Aiko	0092
Aiwa	0701, 1914
Akai	0030, 1903, 0098, 0672
Alaron	0179, 0183
Albatron	0003, 0843
Ambassador	0177
America Action	0180
Ampro	0751
Anam	0068, 0004, 0180, 0003
Anam National	0161, 0055
AOC	0003, 0030, 0137, 0185

Table 6: TV codes (Continued)

TV	Code
Apex Digital	0148, 0879, 0748, 0890
Archer	0003
Audiovox	0092, 0180, 0802, 0875, 1951, 1937, 1952, 0003, 1661
Aventura	1271
Axion	1937
Bell & Howell	0154
BenQ	1212, 1032
Bradford	0180
Brilliant	1007
Broksonic	1935, 0003, 0236, 1463, 1905, 1911, 1929
Candle	0186, 0046, 0030, 0056
Carnivale	0030
Carver	0054, 0170
Casio	1205
CCE	0217, 0329

Table 6: TV codes (Continued)

TV	Code
Celebrity	0000
Celera	0148
Changhong	0148
Citizen	0186, 0046, 0056, 0030, 0032, 0060, 0092, 0280, 1909
Clairtone	0185
Clarion	0180
Colt	1906
Commercial Solutions	0047
Concerto	0056
Contec	0158, 0036, 0180, 0185
Craig	0180, 0161
Crosley	0054
Crown	0032, 0180
Curtis Mathes	0060, 0030, 0032, 0047, 0054, 0056, 0093, 0145, 0154, 0166, 1661, 0466, 1903, 1919

Table 6: TV codes (Continued)

TV	Code
CXC	0180
Daewoo	0092, 1909, 1661, 0661, 0032, 0066, 0067, 0672
Dell	1080, 1178
Denon	0145, 0511
Dumont	0017
Durabrand	1271, 1463, 0003, 1178, 0180, 1034
Dwin	0093, 0774
Electroband	0000, 0185
Electrograph	1755
Electrohome	0032, 0036
Elektra	0017, 1661
Emerson	0236, 0180, 1178, 0179, 0177, 1463, 0282, 1911, 0270, 1944, 1909, 0280, 0183, 0181, 0158, 0032, 0185, 0036, 1905, 1271, 1909, 1929, 0154
Envision	0813, 0030
Epson	1122, 0833, 0840
ESA	1271, 1903

Table 6: TV codes (Continued)

TV	Code
Fisher	0154
Fujitsu	0809, 0179, 0683, 0853
Funai	1271, 0180, 0179, 1271, 1904, 1944
Futuretech	0180
Gateway	1755, 1032
GE	0021, 0027, 0047, 0055, 1178, 0051, 0251, 1661, 0135, 0138, 0174, 0279, 0282, 1907, 1917, 1919, 1922
Gibraltar	0017, 0030
GoVideo	0886
GoldStar	0001, 0030, 1178, 0032, 1926
Goodmans	0360
Gradiente	0392
Grunpy	0179, 0180
Haier	1034
Hallmark	1178
Harley Davidson	0043, 0179, 1904

Table 6: TV codes (Continued)

TV	Code
Harman/Kardon	0078, 0054
Harvard	0068, 0180
Havermy	0093
Helios	0865
Hello Kitty	1661
Himitsu	0180
Hisense	0748
Hitachi	0145, 0032, 0056, 0413, 0095, 0173, 0227, 0279, 0797, 1904, 0145
Hyundai	0849, 1219
Infinity	0054
InFocus	1164
Insignia	1204
Inteq	0017
IX	0877
Janeil	0046

Table 6: TV codes (Continued)

TV	Code
JBL	0054
JCB	0000
Jensen	0050, 0761, 1933, 0150
JVC	0053, 0731, 0036, 0160, 0036, 1923
Kawasho	0158, 0308
KEC	0180
Kenwood	0030
KLH	0148, 1962
Kloss	0024, 0046, 0078
Konka	0707, 0632, 1939, 0180, 0638, 1939
KTV	0180, 0185, 0280, 0217, 0030, 0032, 0183
LG	1178, 0442, 0003, 0856, 1934
Lloyd's	1904
Loewe	0136
Luce	1031
Luxman	0056

Table 6: TV codes (Continued)

TV	Code
LXI	0154, 0047, 0054, 0148, 1178
Magnasonic	1913, 1909
Magnavox	0054, 0187, 1944, 0024, 0020, 1198, 1913, 0028, 0030, 0036, 0179, 0186, 0032, 0706, 1904, 1931
Magnin	1907
Marantz	0054, 1154, 0704, 0854, 0030, 0444
Matsushita	0250, 0650
Maxent	1755
Megapower	0003
Megatron	0003, 0145, 1178
MEI	0185
Memorex	0179, 1463, 1911, 1178, 1920, 0150, 0154, 1924, 1926, 1924
MGA	0150, 0030, 1178, 1907
Midland	0017, 0032, 0047, 0051, 0135
Minutz	0021
Mitsubishi	0150, 1178, 0014, 0093, 0358, 0868, 0098, 1917

Table 6: TV codes (Continued)

TV	Code
Monivision	0003, 0843
Motorola	0055, 0093
MTC	0060, 0030, 0185, 0056
Multitech	0180, 0217
NAD	0148, 1178
NEC	0030, 0497, 1704, 0036, 0170, 0882, 0056, 0434
NetTV	1755
Nikko	1178, 0032, 0030, 0092
Noblex	0430
Norcent	0824, 0748
NTC	0092
Onwa	0180
Optimus	0250, 0166, 1924, 1913, 0154, 0650
Optoma	0887
Optonica	0093, 0165
Orion	1911, 0179, 0236, 1463, 1905, 1929

Table 6: TV codes (Continued)

TV	Code
Panasonic	0051, 0250, 0650, 0055, 1924, 0226, 1941, 1410, 1947, 0162, 0375, 1919, 1946
Penney	0047, 0060, 0030, 0021, 0027, 0135, 1178, 0001, 0051, 0032, 0309, 1926, 1919, 1907, 0148, 0149, 0138, 0110, 0032, 0003
Philco	0020, 0028, 0030, 0054, 0302
Phillips	0054, 1961, 0690, 1154
Pilot	0030, 0032
Pioneer	0166, 1260, 0679, 0172
Polaroid	1276
Portland	0032, 0092
Prima	0761, 1933, 0150
Princedom	0717, 0003
Prism	0051
Preston	0047, 1922
Proton	0466, 0003, 1178, 0031
Pulsar	0017

Table 6: TV codes (Continued)

TV	Code
Quasar	0051, 0055, 0250, 0165, 0219, 0650, 1919, 1924
Radio-Shack	0165, 0180, 0030, 1178, 0032, 0154, 1904, 1920, 0047, 0056
RCA	0047, 0679, 1922, 0135, 1948, 1958, 0090, 0174, 1907, 1917, 1919
Realistic	0165, 0180, 0154, 0030, 0032, 1178, 0056
Rhapsody	0183, 0185
Runco	0497, 0603, 0017, 0251, 0030
Sampo	1755, 0030, 0032, 0100, 0110
Samsung	1903, 0060, 1178, 0766, 1959, 1903, 0030, 0032, 0056, 0329, 0302, 0427
Samsux	0032
Sansui	1911, 1935, 1463, 1904, 1929
Sanyo	0799, 0154, 0893, 0088, 0107, 0232, 1142, 1907
Scotch	1178
Scott	0236, 0309, 1178, 0179, 0180

Table 6: TV codes (Continued)

TV	Code
Sears	0154, 0148, 1007, 0047, 0054, 0056, 0149, 0168, 1271, 1178, 0179, 0032, 1904, 1926
Sharp	0093, 0165, 0491, 0153, 0851, 0032, 1917, 0036, 0220, 0032, 0398
Sharper Image	1950
Sheng Chia	0093
Simpson	0186, 0187
Solarism	1220
Sony	0000, 0353, 0834, 1904, 1925
Soundesign	1178, 0179, 0180, 0186
Sova	1952
Spectricon	0003, 0137
Squareview	1271
SSS	0180
Starlite	0180
Studio Experience	0843

Table 6: TV codes (Continued)

TV	Code
Superscan	0864
Supre-Macy	0046
Supreme	0000
SVA	0587, 0748, 0865, 0871, 0872
Sylvania	0020, 0054, 1271, 0028, 1944, 0030, 0065, 0036, 1931, 1944
Symphonic	1271, 1913, 0180, 1904
Syntax	1144, 1178
Tandy	0093
Tatung	0003, 0055, 0396, 1032
Technics	0051, 0250
Technol Ace	0179
Techview	0847
Techwood	0003, 0051, 0056
Teknika	0186, 0054, 0179, 0180, 0032, 0092, 0056, 0060, 0150, 0175
Telefunken	0056, 1903

Table 6: TV codes (Continued)

TV	Code
Tera	0031
Thomas	1904
TMK	0056, 0177, 1178
TNCi	0017
Toshiba	0148, 0149, 0060, 1704, 1918, 0650, 0832, 1164, 1178, 1918, 1935, 0036, 0154, 1918
Tosonic	0185
Totevision	0032
Trical	0036
TVS	1463
Ultra	0391
Universal	0027
Vector Research	0030
VEOS	1007
Victor	0053
Vidikron	0242, 0054

Table 6: TV codes (Continued)

TV	Code
Vidtech	0036, 1178
Viewsonic	0864, 0857, 0885, 1755
Viking	0046
Vizio	1032, 0864, 0885
Wards	0054, 0165, 1178, 0020, 0000, 0021, 0027, 0028, 0030, 0056, 0174, 0179, 0202
Waycon	0148
Westinghouse	0889, 0890
White Westinghouse	1909, 1463
Yamaha	0797, 0833, 0769, 0030, 0769
Zenith	0017, 1178, 1909, 1911, 0092, 1463, 1904, 1929
Zonda	0003

Audio device codes

Use the codes in table 7 to program the remote for your audio device.

Table 7: Audio device codes

Audio device	Code
Acurus	3765
Adcom	3002, 3304, 3577, 3616, 4100, 4616, 4617
Admiral	3182
Aiwa	3121, 3125, 3158, 3189, 3405, 3406, 4089, 4243, 4405, 4641
Akai	3076, 3224, 4255, 4512
Alco	4390
Amphion Media Works	4563, 4615
Amplifier Technologies	4584
AMW	4563, 4615
Anam	4074, 4609
Apex Digital	4257, 4430, 4774

Table 7: Audio device codes (Continued)

Audio device	Code
Arcam	4120
AudioSource	3011
Audiotronic	4189
Audiovox	4390, 4627
B & K	3840
Bel Canto Design	4583, 4584
Blamp	3582
Bose	3639, 3674, 4229, 4253
Brix	4602
Cambridge Soundworks	4370
Capetronic	3531
Carver	3008, 3042, 3189, 3269, 3360, 3412, 4089, 4189
Casio	3195, 3201
Clarinette	3195
Classe	3733, 4461, 4462

Table 7: Audio device codes (Continued)

Audio device	Code
Classic	4352
Coby	4263, 4389
Criterion	4420
Curtis Mathes	3080, 3201, 3300
Daewoo	4250
Dell	4383
Delphi	4414
Denon	3004, 3160, 3273, 3771, 4104, 4142, 4360
Digital Audio Control	3085
Durabrand	4561
Elan	3647
Emerson	3255, 3424
Fisher	3042, 3219, 3360, 4801
Forte	3606
Fosgate	3111, 4487

Table 7: Audio device codes (Continued)

Audio device	Code
Garrard	3146, 3281, 3424, 3440, 3463, 3744
Gateway	4517, 4567
GE	3078, 3260
Glory Horse	4263
Go Video	4532
GoldStar	3031
GPX	3744
Hafler	3146
Harman/Kardon	3106, 3110, 3189, 3891, 3892, 4306
Hewlett Packard	4181
Hitachi	3228, 4273, 4801
Initial	4426
Inkel	3062, 3066
Integra	3135, 4298, 4320
JBL	3110, 3281, 4306
JVC	3331

Table 7: Audio device codes (Continued)

Audio device	Code
JVC	3074, 3464, 4263, 4374, 4495, 4811
Kansai	3440
Kenwood	3027, 3042, 3077, 3186, 3239, 3297, 3313, 3314, 3356, 4027, 4051, 4313, 4569, 4570
KLH	4390, 4412, 4428, 4664
Koss	3255, 3424, 3744, 4366, 4497
Lasonic	4798
Left Coast	3892
Lenoxx	4437, 4561
Lexicon	4076, 4802
LG	4293
Linn	3189, 3269, 3282
Liquid Video	4497
Lloyd's	3195
Logitech	4408
Luxman	3149, 3165

Table 7: Audio device codes (Continued)

Audio device	Code
LXI	3181, 3744
Magnavox	3128, 3189, 3195, 3204, 3222, 3364, 3269, 3391, 3531, 4089, 4189, 4269, 4514
Marantz	3006, 3039, 3128, 3189, 3269, 3321, 3412, 3892, 4089, 4189, 4269, 4289
Mark Levinson	4483
McIntosh	3251
MCS	3039, 3201, 3346
Mitsubishi	4393
Modulaire	3195
Musicmagic	4089
NAD	3320
Naim	3552
Nakamichi	3097, 3321, 3347, 4555
NEC	3131, 3264
Norcent	4389
NTDE Geniesom	3744

Table 7: Audio device codes (Continued)

Audio device	Code
Onkyo	3119, 3135, 3380, 3842, 4298, 4320, 4531
Optimus	3042, 3080, 3177, 3181, 3186, 3219, 3300, 3395, 3440, 3531, 3622, 3670, 3738, 3744, 3801, 3823, 4023, 4074
Orient Power	3744
Oritron	4366, 4497
Outlaw	4487
Panasonic	3039, 3308, 3309, 3367, 3518, 3521, 4288, 4316, 4518, 4548, 4633, 4763, 4764
Parasound	3246
Penney	3195, 3201
Philco	4390
Philips	3189, 3269, 3391, 3412, 3642, 3892, 4089, 4120, 4189, 4266, 4269
Pioneer	3013, 3080, 3150, 3244, 3289, 3300, 3531, 3630, 3823, 4023, 4384
Polaroid	4508
Polk Audio	3189, 3269, 3892, 4289

Table 7: Audio device codes (Continued)

Audio device	Code
Proscan	4254
Quasar	3039
Radio-Shack	3744, 4263
RCA	3054, 3080, 3300, 3346, 3360, 3530, 3531, 3823, 4023, 4074, 4154, 4254, 4390, 4511, 4609
Realistic	3163, 3181, 3182, 3195, 3395
Regent	4437
Rio	4383, 4869
Saba	4519
Samsung	4295, 4500
Sansui	3189, 3193, 3321, 3323, 3346, 3593, 3623, 3652, 4089
Sanyo	3219, 3801, 4251, 4469
Schneider	3364
Scott	3105, 3163, 3322, 3390
Sears	3201
Sharp	3186, 3226, 3262, 4286

Table 7: Audio device codes (Continued)

Audio device	Code
Sharper Image	4263, 4556
Sherwood	3062, 3066, 3475, 3491, 3502, 3565, 4077, 4423, 4653
Shinsonic	4426
Shure	3264
Sonic	3281
Sonic Blue	4383, 4532, 4869
Sony	3158, 3168, 3220, 3415, 3689, 3815, 4058, 4126, 4158, 4258, 4349, 4406, 4441, 4442, 4558, 4658, 4758, 4759, 4822, 4858
Soundesign	3078, 3211, 3670
Soundstream	3141
Stereophonics	4023
Sunfire	3313, 3314, 4313
Sylvania	3222
Symphonic	3182
Tandberg	3204, 3206

Table 7: Audio device codes (Continued)

Audio device	Code
Teac	3163, 3387, 3463, 4074, 4267, 4390, 4528
Technics	3039, 3208, 3308, 3309, 3372, 3374, 3518, 3521, 4308, 4309, 4518
Techwood	3281, 3344, 3364
Thorens	4189
Toshiba	3353
Venturer	4390
Victor	3074, 3331
Wards	3013, 3054, 3078, 3080, 3158, 3189, 3211
Welton	3344
Yamaha	3081, 3082, 3133, 3143, 3176, 3186, 3354, 3504, 4176, 4276, 4331, 4375
Yorx	3195

Specifications

10

Media center specifications.....	92
Moxi Mate specifications	92

Media center specifications

Table 8: Media center specifications

Feature	Quantifier
Power supply	Line input voltage 95 V to 125 V AC; frequency 57 Hz to 63 Hz
USB power (front)	Two USB 1.1 connectors, 5 V, 500 mA maximum combined current
USB power (rear)	Two USB 2.0 connectors, 5 V, 500 mA maximum combined current
DVI power	5 V, 100 mA maximum current
IEEE 1394	Two large 4-pin, unpowered (some models)
Operating temperature	15°C to 65°C
Dimensions (WxHxD)	17 x 3.3 x 12 inches
Weight	Approximately fifteen pounds

Moxi Mate specifications

Table 9: Moxi Mate specifications

Feature	Quantifier
Power supply	Line input voltage 95 VAC to 125 VAC; frequency 57 Hz to 63 Hz
Operating temperature	15°C to 65°C
Dimensions (WxHxD)	10.3 x 2 x 6 inches
Weight	Approximately three pounds

Glossary

11

Numerics

- 1080i** 1080 alternating interlaced lines is the most common HD standard with the greatest line count, and available on almost all HD-ready and HDTV sets.
- 16:9** The aspect ratio of widescreen digital TV formats for all HD and some standard-definition video. Sixteen units of width correspond proportionally to nine units of height, regardless of actual screen size.
- 4:3** The aspect ratio of the standard NTSC TV screen. Four units of width corresponding proportionally to three units of height regardless of the actual size of the screen.
- 480i** 480 interlaced lines is the setting for most standard TVs. Not all HDTVs display 480i.
- 480p** Many HD and EDTVs can display 480 progressive scan lines.
- 720p** 720 progressive scan lines on a TV screen.

A

action menu: Provides provides different action choices or commands. It appears in the Moxi Menu when a user decision is required.

album: A collection of songs in Jukebox or a collection of photographs in Photos.

aspect ratio: The aspect ratio of a screen is its width divided by its height. Traditional TVs are 4:3 and HDTVs are 16:9.

C

card: Cards appear in a vertical list within categories in the Moxi Menu.

category: Category cards appear in the horizontal band of the Moxi Menu. They include Channels, Recorded TV, Favorites, and more.

component: A composite video connection uses three separate analog video signals to supply video. The red, green, and blue RCA connectors are standard.

composite: A composite connection supplies an analog video signal. The yellow RCA connector is standard.

D

DVCR: A digital video cassette recorder can record higher video resolutions and with better quality than a traditional VCR. DVCRs may use magnetic tape or disk drives.

DVI-D: Digital Video Interface - digital is a digital signal for digital monitors. It is a high-speed serial interface that supports digital displays only.

DVR: Digital Video Recorder is a feature that enables a subscriber to pause and replay live TV and digitally record TV shows.

E

EDTV: Enhanced-definition describes a digital TV that is usually capable of displaying video in 480p.

episode limit: The maximum number of episodes for the selected program that the media center will record.

F

favorites: The category in the Moxi Menu that contains a list of the fifteen channels most frequently watched.

Flip bar: A banner at the bottom of the screen that allows browsing of other channels and upcoming shows while the current show remains full screen.

H

HDID: Hardware Device ID is a unique identifier that each device can access internally. This identifier allows Digeo servers to identify individual devices.

HDTV: High Definition TV provides much better resolution than TVs based on the NTSC standard of 480i. HDTVs typically show video at video resolutions of 720p and 1080i, often in addition to other resolutions.

I

IEEE 1394: A high-bandwidth digital connection sometimes called FireWire. The media center provides an MPEG-2 audio and video stream, from live TV, for recording or display on a digital device.

infrared emitter: A device to send control signals to home theater components or any other device capable of receiving and decoding them.

IP Address: An Internet Protocol address is a numerical address that uniquely identifies a specific location or computer on the Internet.

IR blaster: An IR blaster sends remote control signals to many components simultaneously, in a programmed sequence, or to a remote location such as inside a cabinet.

J

Jukebox: A feature offering consumers their own customizable collection of music (MP3).

L

live TV: You are watching live TV if tuned to a channel and watching the current broadcast.

M

MAC Address: The Media Access Control address is a unique number assigned to a device, such as a cable modem or LAN controller.

media center: The product name for Digeo's all-in-one solution running the Moxi Service. A television set-top box that delivers digital entertainment.

movie rating: The MPAA rating system allows viewers to make decisions about which movies may be appropriate for children. Moxi allows setting parental controls based on movie ratings.

Moxi Menu: A user interface through which consumers can explore and access live or recorded TV programming, digital music, photos, and games using a remote control.

P

Parental controls: A feature providing control of media viewing by restricting programming by rating and requiring the use of a PIN.

PC Link: A feature that allows the media center to view and play photos and music stored on your personal computer.

Photos: A feature that allows consumers to store, organize and display digital pictures.

playback controls: Remote controls that allow manipulation of your location within the current program. The actions include: play, pause, stop, fast-forward, slow-motion, rewind, skip, replay, next, and back.

player bar: A horizontal graphic that appears in the lower part of the screen whenever you press a playback control. The bar provides information about the viewing location within the current program.

playlist: In Jukebox, after creating a queue, you may save it as a playlist.

Q

queue: In Jukebox, you may individually select a list of upcoming songs to play. That is a queue and may be saved as a playlist on Moxi.

R

recording options: Parameters that can be altered to customize the recording. Options include: start and stop times, keep duration, and more for series recordings.

RF out: A basic analog connection available on some models.

RJ-45: An outlet jack for connection to IP network or Ethernet applications.

S

S/PDIF: The Sony/Phillips Digital Interface Format is a set of standards for sending and receiving digital audio signals, including the connectors used by the input and output digital audio devices.

SAP: Secondary audio programming is available on some programs that carry a second audio track in another language than the primary language. Not all programs carry this feed.

SD: Standard definition is the screen resolution (480 interlaced lines) of most standard TVs.

series priority: Used by Moxi to determine which series to record when more than two air at the same time.

slideshow: A collection of photos. When you upload photos from a memory card, a new slideshow is created.

slow motion: Use slow motion on any program to view a show at very slow speed. Activate it by pressing pause, and then pressing the fast-forward button once.

subnet: A subnet is a portion of a larger network. For PC Link, all linked devices must be on the same subnet - IP addresses are the same except for the last number (192.168.2.2 and 192.168.2.3, for example).

SuperTicker: A feature that provides access to additional content for news, weather, sports, and stocks. When launched, it scales back the TV image and uses a small area at the bottom of the screen.

S-Video: An analog video connection with better quality than Composite. S-Video is capable of displaying 480i from the media center.

T

time slot: TV programs air in a time slot. Use series options to specify which time slots are recorded.

TV rating: A way to educate viewers on the content of broadcast programming. Moxi allows setting parental controls based on TV rating.

U

USB: Universal Serial Bus provides a serial bus standard for connecting devices. On the media center it is used to connect such devices as memory card readers and external hard drives.

V

V-Chip: The V-Chip is the federally-mandated parental control function built into all TVs larger than 13 inches that have been sold in the United States since 1999.

video resolution: The setting that determines the lines and frames making up the picture that appears on the TV screen.

Index

12

Numerics

21 Frenzy, 27

A

About Moxi 11
 album, open, 21
 archiving 48, 50
 audio
 connections, 33
 device codes 85
 output, 33
 secondary, 34
 See also *Moxi remote*.

B

Blackjack, 26
 Blast It, 27
 Block Breaker, 26
 Bowling, 27
 box ID 11
 Bubble Blast, 26

C

card 10
 background color, 16
 Find & Record 12
 program, 15
 scheduled to record, 16
 category 10
 channels, 13, 30
 favorites 13
 games, 25
 Jukebox, 23
 Parental Controls, 35
 CD, options, 35
 channel list, 30
 Closed Caption, 34
 Code Breaker, 26
 components, adding, 67
 connecting
 home network, 66
 See also PC Link
 media center, 65
 requirements, 60

connection

 secondary, 49
 wired data, 66
 wireless, 67

connectors

 audio, 64
 IEEE 1394, 51
 video, 63

copyrights, DVD, 23
 cropped, 32

D

digital VCR, 50

F

favorites, 13
 features
 media center, 61
 Moxi Mate, 62
 Find & Record 12
 find. See also *search*.

FireWire. See also *IEEE 1394*.
 first-run only, 18
 flip bar, 13

G

Games 4
 21 Frenzy, 27
 Blackjack, 26
 Blast It, 27
 Block Breaker, 26
 Bowling, 27
 Bubble Blast, 26
 Code Breaker, 26
 Invasion Wave, 26
 Mahjong, 26
 Ping, 27
 playing, 25
 Slot Machine, 25
 Solitaire, 25
 Tomato, 27
 Video Poker, 27

H

HDTV

- connections 31
- setup, 23

home network

- troubleshooting, 74

I

icons, recording, 15

IEEE 1394, 50

infrared emitter (IR blaster), 46

installation

- secondary components, 67

Invasion Wave, 26

IP address 11

J

Jukebox 4, 23

- loading, 24

- playing, 24

- queue, creating, 24

L

letter box, setting, 32

live TV, watching, 3

locking. See also *parental control*.

M

MAC address 11

Mahjong, 26

media center

- connecting, 65

illustrations

- front and back panel, 61

- installing secondary components, 67

- product specifications, 92

- standard features, 61

- ventilation requirements, 60

Media Player, 22

Moxi Flip Bar 13

Moxi Mate 4

illustrations

- front and back panel, 62

- product specifications, 92

- standard features, 62

Moxi Menu 2

- conceptual view 2

- favorite channels 13

- navigating 10

Moxi remote

- audio codes, 85

button

- back, 9

- clear, 9

- enter, 9

- live TV, 9

- next, 9

- pause, 9

- replay, 9

- skip, 9

features 9

illustrated 9

Moxi button 8

tv codes, 78

music

- loading, 24

- playing, 24

See also *Jukebox*.

N

notes 4

O

On Demand 3

- controlling purchases, 38

options, CD 35

- auto eject, 35

- auto import, 35

- auto play, 35

output, audio, 33

P

parental control 35

- controlling purchases, 38

- locking channels or programs, 36

PIN 36

See also *PIN*.

turning off, 37

unlock timer, 37

Pay Per View 3

- controlling purchases, 38

PC Link 4, 35, 53

- connecting to, 54

- playlist, 22

- requirements, 54

- setup, 56

- sharing music, photos, 57

Photos 3

- album, 21

- uploading, 20

- using, 20

- viewing slideshow, 21

PIN

- changing,
- creating, 35
- resetting, 38

Ping, 27**playback controls, 14**

See also *Moxi remote*

player bar

- features of, 14
- illustrated, 14
- using the, 14

playlist

- creating, 22
- with PC Link, 22
- with photos, 22

priority

- changing, 18
- setting 18

product illustrations

- media center, 61
- Moxi Mate, 62

product specifications

- media center, 92
- Moxi Mate, 92

Q**queue, creating, 24****R****rating, locking by,****recording 15**

- already scheduled, list of,
- icons 15
- options, 16
- see all times, 15
- series options, 15, 17
- series, repeats, 18

remote. See also *Moxi remote***resolution**

- standard definition, setting, 31
- supported, 31

S**SAP, 34****search 12**

- by category 13
- by title or keyword 12

secondary audio, 34**secondary components 67****see all times, 15****series**

- changing priority, 18
- episode limit, 18
- priority, 18
- recording, 17

service messages, reading, 25**settings**

- closed caption 34
- cropped, 32
- letterbox, 32
- PC Link, 35
- skip, 34
- wide mode, 32
- widescreen, 32

setup

- HDTV, 23, 30
- PC Link, 35

shows

- live TV 3
- recording, 15

shuffle, 24**skip, 34****slideshow 21**

- music, 22

Slot Machine, 25**slow motion, 9, 14****software version, 11****Solitaire, 25****sound effects, 30****specifications**

- media center, 92
- Moxi Mate, 92
- standard definition, 31

Storage & Stats 11**storage meter, understanding, 11****SuperTicker 3****lock topic or item, 19****story, reading, 20****using, 19****T****time slot****changing 10****timeslots 18****Tomato, 27****troubleshooting 71****home network, 74****media center, 72****audio, video, 72****audio/video out-of-sync, 72****changing channels, 72****static on screen, 72****Moxi Mate, 73****audio, video, 74****power, 73****remote and front panel, 73****TV codes 78**

See also *Moxi remote*.

V

V-Chip, 37

ventilation 60

video

connections supported, 31

Video Poker, 27

video resolutions, DVD, 23

W

wide mode, 32

widescreen, settings, 32

Windows Media Connect 55, 56

See also *PC Link*.



MOXI™

all DVRs were not created equal

January 2007

Download from www.somanuals.com. All Manuals Search And Download.

Free Manuals Download Website

<http://myh66.com>

<http://usermanuals.us>

<http://www.somanuals.com>

<http://www.4manuals.cc>

<http://www.manual-lib.com>

<http://www.404manual.com>

<http://www.luxmanual.com>

<http://aubethermostatmanual.com>

Golf course search by state

<http://golfingnear.com>

Email search by domain

<http://emailbydomain.com>

Auto manuals search

<http://auto.somanuals.com>

TV manuals search

<http://tv.somanuals.com>