

OPERATING INSTRUCTIONS FOR THE  
**DETAILS**

by MR. COFFEE®

**BURR MILL  
MODEL BM1D**



**BM1D**

FOR HOUSEHOLD USE ONLY  
FOR SERVICE OR QUESTIONS, CALL 1-800-MR COFFEE  
(1-800-672-6333)

# IMPORTANT SAFEGUARDS

When using electrical appliances, basic safety precautions should always be followed to reduce the risk of fire, electric shock, and/or injury to persons, including the following:

1. **Read all instructions before using the machine.**
2. To protect against electric shock, do not immerse cord, plugs, or machine in water or other liquid.
3. Close adult supervision is necessary when this appliance is used by or near children.
4. Turn control switch to OFF and unplug from outlet when not in use and before cleaning. Allow to cool before putting on or taking off **parts**, and before cleaning the appliance.
5. Avoid contacting moving parts.
6. Do not operate any appliance with a damaged cord or plug or after the appliance malfunctions, or has been damaged in any manner. Return this appliance only to the nearest authorized service center for examination, repair or adjustment.
7. The use of accessory attachments not recommended by MR. COFFEE, inc., may cause hazards or injuries.
8. Do not use outdoors.
9. Do not let cord hang over edge of table or counter, or touch hot surfaces.
10. Check hopper for presence of foreign objects before using.
11. To disconnect, turn any control to "off", then remove plug from wall outlet.
12. Do not use appliance for other than intended use.

## SAVE THESE INSTRUCTIONS

# SPECIAL CORD SET INSTRUCTIONS

1. A short power supply cord is provided to reduce the hazards resulting from becoming entangled in or tripping over a longer cord.
  2. An extension cord may be purchased and used if care is exercised in its use.
  3. If an extension cord is used, the marked electrical rating of the extension cord must be at least 5 amps and 120 volts. The resulting extended cord must be arranged so that it will not drape over the counter top or table top where it can be pulled on by children or tripped over accidentally.
- \* **This appliance has a polarized plug (one blade is larger than the other). As a safety feature, this plug will fit in a polarized outlet only one way. If the plug does not fully fit in the outlet, reverse the plug. If it still does not fit, contact a qualified electrician. Do not attempt to defeat this safety feature.**

## ***FOR BEST RESULTS***

1. Use coffee beans only in this appliance.
2. Select grind setting while mill is running.
3. Ground coffee chamber should always be in place when using this appliance.
4. Do not leave unattended when grinding. The ground coffee chamber cannot hold the capacity of the whole bean chamber. Be sure to shut machine off if grounds chamber is full.
5. Flavored coffee beans will gum up the burrs and leave an oily residue when stored for long periods of time. Remove all caked-on coffee **parts** from your grinder during cleaning. Be sure to clean your burr mill more frequently when using flavored beans.
6. Clean after every third or fourth use.
7. Open grinder frequently to the coarsest setting and run empty to **clear** the path for the coffee.
8. Do not use the finest setting when grinding coffee for your automatic **drip** coffeemaker. The finer grounds could cause overflow of the coffee basket.

## Introduction

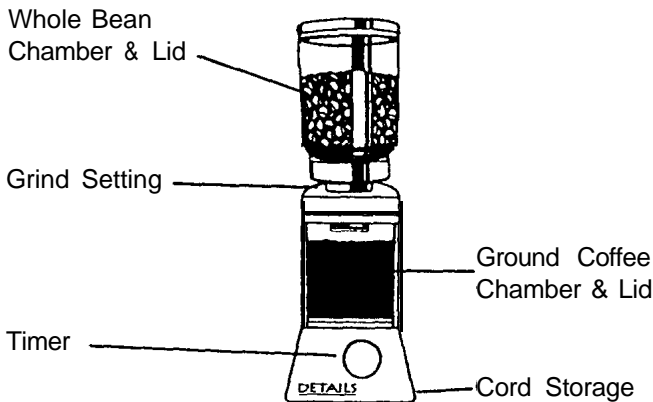
Congratulations! You are the owner of a Mr. Coffee Burr Mill, model BMID. Mr. Coffee's Burr Mill features nine grind settings and eight ounce whole bean capacity. This model features a timer that allows you to dial the number of cups you will brew and automatically grinds the correct amount of beans.

Please read all of the instructions in this booklet carefully before you begin to use this appliance. Proper care and maintenance will ensure the long life of this appliance and its trouble-free operation. Save these instructions and refer to them often for cleaning and care tips.

## Table of Contents

	Page #
Important Safeguards .....	2
Cord Set Instructions .....	3
For Best Results .....	3
Introduction .....	4
Diagram of Parts .....	4
To Mill the Perfect Grind .....	5
Cleaning Instructions .....	6
If Service is Required .....	7
Limited Warranty .....	8

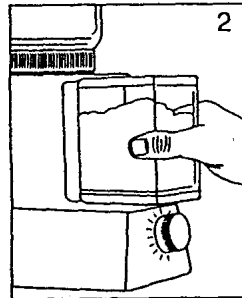
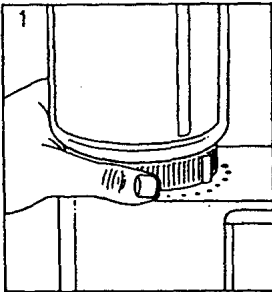
## Diagram of Parts



## To Mill the Perfect Grind

Mr. Coffee's Burr Mill features grinding adjustments from coarse to very fine. The burr mill minimizes heat in the grinding process by using opposing burrs to crush the whole beans to a uniform grind.

1. Fill the whole bean chamber with coffee beans and close the lid tightly to maximize freshness.
2. To achieve the best cup of coffee or espresso, grind only the amount of coffee you will use immediately.
3. Set the length of grinding time on the timer based on the cups of coffee desired. This will switch the mill ON. Turning the timer to "0" will automatically stop the grinding process.
4. While mill is running, turn the whole bean chamber accordingly to set the rate of coffee grind fineness(i). If you turn the coffee bean chamber counterclockwise the grind will be coarser at each point. You will discover which setting best meets your personal preference for making coffee.
5. When grinding is completed, pull the ground coffee chamber out and remove the lid (2). Coffee can be easily poured from the chamber.



### GRIND SETTING CHART

GRIND	COFFEEMAKER
Fine	Espresso/Cappuccino
Medium	Automatic Drip
Coarse	Manual, Percolator & Coffee Press

## COFFEE MEASUREMENT CHART

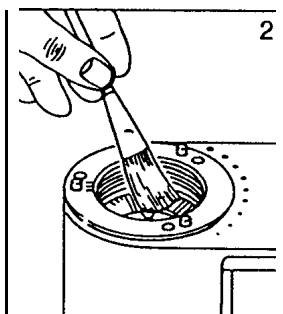
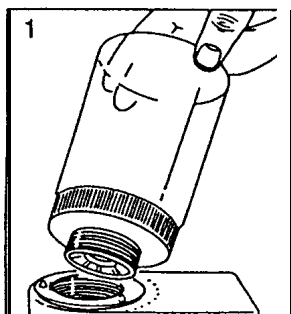
BEAN QUANTITY		GROUND COFFEE		CUPS OF COFFEE
tablespoons/coffee	scoops	in	tablespoons	5 oz. cups
3 tbls.	1 1/2 scoops		3 tbls.	2 cups
5 tbls.	2 1/2 scoops		5 tbls.	4 cups
6 tbls.	3 scoops		6 tbls.	6 cups
8 tbls.	4 scoops		8 tbls.	8 cups
10 tbls.	5 scoops		10 tbls.	10 cups
11 tbls.	5 1/2 scoops		11 tbls.	12 cups

## Clean Before First Use

To ensure proper function and the long life of your burr mill follow these simple steps for cleaning regularly.

**Always unplug your burr mill after use and before cleaning.**

1. **Read all instructions.**
2. Turn the whole bean chamber to the right until it can be lifted off the base (1). This will allow you to clean the grinding wheel.  
**NOTE: Never use water or liquid for cleaning the lower grinding section of this appliance.**
3. Clean interior recesses with a soft brush (not provided)(2).
4. Wash the whole bean chamber & lid and the ground coffee chamber & lid in mild detergent and water. These items are only dishwasher safe on the top rack of your dishwasher. Wipe exterior with a damp cloth. Do not immerse mill in water or any other liquid or place in dishwasher. Use only non-abrasive cleaners to remove stains.
5. After completely drying, replace whole bean chamber. **Important: when replacing whole bean chamber, screw on completely before setting grinding rate. Turn chamber clockwise (as viewed from top), until it will not turn.** Fill with whole coffee beans for grinding and replace lid.
6. Replace ground coffee chamber & lid, making sure it snaps securely into place.



## ***If Service Is Required, Do Not Return to Your Store***

For service, **call** 1-800-MRCOFFEE (1-800-672-6333).  
8:30 a.m. to 5:00 p.m. Eastern Standard Time, Monday through Friday.

**To assist us in serving you, please have the model number BMI D  
and date of purchase available.**

**All** repairs must be made by Mr. Coffee or an authorized Mr. Coffee Service Center. Please call us for the authorized service center for your area. **Please do not return this appliance to your store.**

### **We welcome your questions, comments or suggestions.**

Please include your complete name, address, telephone number and description of problem in all communications.

Please call us at 1-800-MRCOFFEE (1-800-672-6333) or write to us at:

**Consumer Affairs Department  
MR. COFFEE, Inc.  
24700 Miles Road  
Bedford Heights, Ohio 44146-1399**

## ***Limited Warranty***

Mr. Coffee, inc. warrants to the purchaser that Mr. Coffee's Burr Mill (except for cord set) is free from manufacturer defects in material and workmanship for a period of one year from the date of original purchase when used in compliance with directions as outlined in the manufacturer's instructions, which will constitute reasonable and necessary maintenance by the purchaser.

In case of manufacturer defects in material or workmanship, Mr. Coffee, inc. agrees to repair (remedy) a defective burr mill without charge. The purchaser's exclusive remedy against Mr. Coffee, inc. shall be for the repair or replacement of a defective Mr. Coffee Product.

All repairs must be made at an authorized Mr. Coffee Service Center. To locate a Mr. Coffee Service Center, call 1-800-672-6333. As the purchaser, you assume all cost incurred in transporting your Mr. Coffee machine to and from the authorized Mr. Coffee Service Center. *Mr. Coffee, inc. shall not be responsible for any repairs performed at any facility which is not an authorized Mr. Coffee Service Center.*

This warranty gives you specific legal rights, and you may also have other rights which vary from state to state. Any implied warranty is limited in duration to the one year provided in this, the only, expressed warranty. Some states do not allow limitations on how long an implied warranty lasts, so the above limitation may not apply to you.

***In no event shall Mr. Coffee, inc. be responsible for incidental or consequential damages,*** nor damage due to misuse or the use of any unauthorized attachment; nor assumption of responsibility for damage caused by use of an electrical circuit not specified on the Mr. Coffee, inc. product. Some states do not allow the exclusion or limitation of incidental or consequential damages, so the above limitation or exclusion may not apply to you.

**Mr. Coffee, inc.  
24700 Miles Road, Bedford Heights, Ohio 44146-1399**



## Free Manuals Download Website

<http://myh66.com>

<http://usermanuals.us>

<http://www.somanuals.com>

<http://www.4manuals.cc>

<http://www.manual-lib.com>

<http://www.404manual.com>

<http://www.luxmanual.com>

<http://aubethermostatmanual.com>

Golf course search by state

<http://golfingnear.com>

Email search by domain

<http://emailbydomain.com>

Auto manuals search

<http://auto.somanuals.com>

TV manuals search

<http://tv.somanuals.com>