

mr Handsfree®

Portable Power Charger



USER'S MANUAL

GB NL F D DK ES IT SK CZ RU

DECLARATION OF CONFORMITY

We, the undersigned

Company:	TE-GROUP nv
Address:	Kapelsestraat 61, 2950 Kapellen - BELGIUM

declare, that the following equipment:

Product Name:	mr Handsfree Portable Power charger 10400 mAh set
Product Type:	Portable Power Charger 10400 mAh

Conforms with the following safety requirements of the directives 2004/108/EC and 2006/95/EC, and is guaranteed by the CE-symbol.

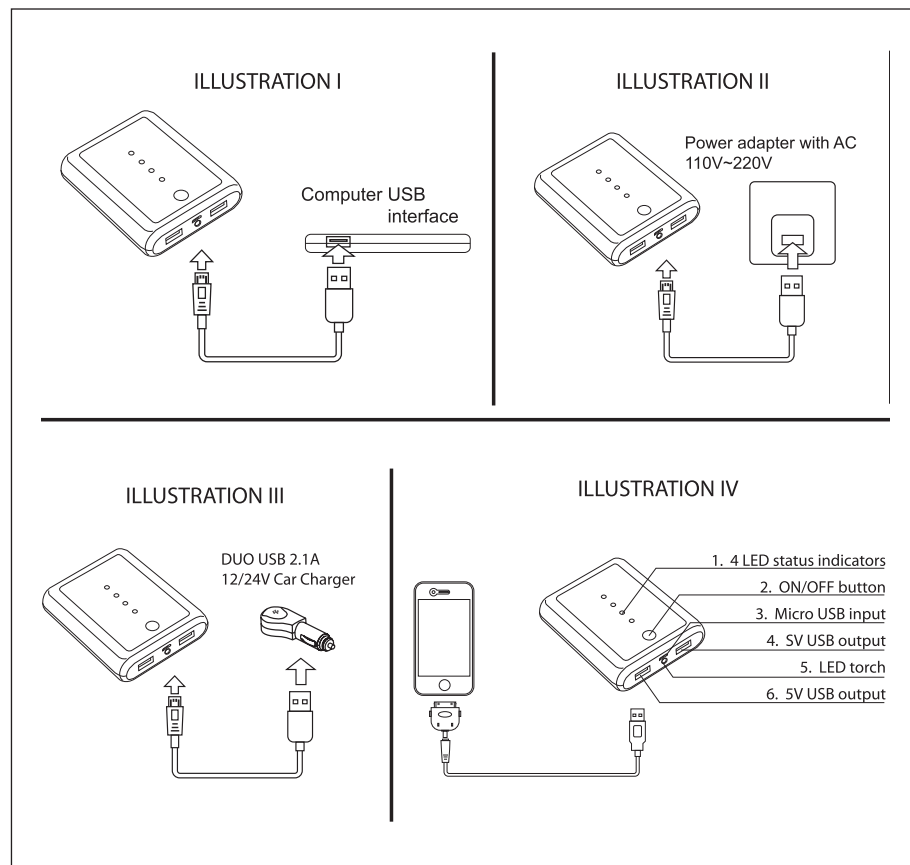
Standards:

EN 55022,
EN 55024,
EN 61000,
EN 60950,
EN 60335



--- QRG/PORTABLE POWER CHARGER 10400 mAh/09-12/V01 ---

ILLUSTRATIONS



GB

PACKAGE CONTENTS

- Portable Power Charger
- 12 different connectors:
 1. Micro USB / Blackberry / Motorola
 2. Mini USB / HTC / Motorola
 3. Apple
 4. Samsung Galaxy TAB
 5. Samsung
 6. Nokia 2.0 mm
 7. LG
 8. Sony / Sony Ericsson
 9. Nintendo 3DS/DSI
 10. Nintendo NDSL
 11. Sony PSP
 12. USB
- DC 3.5 Switch cable
- 100-230V USB AC Travel Adapter 2.1A
- 12/24V Duo USB Car Charger 2.1A
- Travel bag

CHARGING THE PORTABLE POWER CHARGER

1. Connect the micro USB connector to the provided switch cable. Plug the other side of the micro USB plug in the Portable Power Charger's IN port.
Option 1 (See illustration 1):
 Connect the USB plug of the switch cable to your computer's USB port or another USB 2.0 (or higher) compatible port.
Option 2 (See illustration 2):
 Connect the USB plug of the switch cable to the USB port of the provided AC adapter. Plug the AC adapter into a wall socket.
Option 3 (See illustration 3):
 Connect the USB plug of the switch cable to one of the USB ports of the provided Duo USB car charger. Plug the car charger into a cigarette lighter socket.
2. The Portable Power Charger's LED indicators will be blinking to indicate that the battery is being charged. The number of LED's that is continuously ON, indicates the remaining battery capacity:
 - 4 LED's ON: 75-100% remaining power
 - 3 LED's ON: 50-75% remaining power
 - 2 LED's ON: 25-50% remaining power
 - 1 LED's ON: 0-25% remaining power
 - 0 LED's ON: battery is empty
 The charger can be charged in ON or OFF position. Charging time is max. 5-6 hours.
3. When the battery is fully charged, all 4 LED indicators are ON. Disconnect the charger. The Portable Power Charger is now ready for use.

OPERATION OF THE PORTABLE POWER CHARGER (See illustration 4)

Important! The Portable Power Charger must be fully charged before first use.

1. Connect the USB plug of the switch cable to one of the 5V OUT ports of the Portable Power Charger.
2. Connect the other side of the cable to the connector suitable for your device.
3. Connect your device.
4. Turn the Portable Power Charger ON by pressing the button.
5. The LED indicators turn ON, indicating that the Charger is charging your device. The number of LED's that is ON, indicates the remaining battery capacity of the Portable Power Charger.

Remarks:

- You can charge 2 devices simultaneously. When charging 2 devices, you can use the provided switch cable + desired connector for one device and for the second device you should use the USB charging cable that was originally delivered with this second device.

- The LED indicators will turn OFF after 5 seconds, the Charger will keep charging your device. To check the remaining battery status, press the ON/OFF button once.
- **When the Charger is not in use, it will switch OFF automatically to save power.**

LED TORCH

Quickly press the ON/OFF button twice to activate the LED torch. Press the button once again to make the light go into S.O.S. mode. Press the button again to turn the light off. When the Portable Power Charger is fully charged, the LED torch can be used for over 260 hours.

SAFETY INSTRUCTIONS

- The lithium-ion rechargeable battery used in this charging device may present a risk of fire or chemical burn if mistreated. Do not disassemble, expose to heat above 100° C, or incinerate. Misusing or incorrectly connecting the charging device may cause electric shock to users and damage equipment. Read instructions carefully. The charging device may become warm and may reach 50°C under extended high power operation. During operation, keep the charging device away from materials that may be affected by these temperatures.
- When used correctly, lithium-ion rechargeable batteries provide a safe and dependable source of portable power. However, if they are misused or abused, this may result in leakage, burns, fire or explosion/disassembly, causing personal injury or damage to other devices.
- Do not disassemble the charging device. There are no user-serviceable parts inside. Incorrect reassembly may result in shock or fire hazard.
- Do not drop or subject the charging device to strong mechanical shock.
- Do not expose the charging device to moisture, water, rain, snow or spray.
- Do not insert any object into the ports or openings of the charging device.
- Do not operate the charging device if it has received a sharp blow, been dropped, or otherwise been damaged in any way.
- Do not use in environments where the temperature is 40°C or higher.
- Keep out of reach of children.
- To reduce the risk of electric shock, unplug the charging device from any power source before attempting any maintenance or clearing.

TECHNICAL DATA

Input: DC 5V – 1000 mA
 Output: A: 5.3V/1A - B: 5.3V/2.1A
 Capacity: 10400mAh SAMSUNG Li-ion HP
 Weight: 238 grams
 Dimensions: 93 x 79 x 23 mm
 Protection: IC Protector hardware & software

DISPOSAL

Do not dispose of electrical appliances as unsorted municipal waste, use separate collection facilities. Contact your local government for information regarding the collection systems available. If electrical appliances are disposed of in landfills or dumps, hazardous substances can leak into the groundwater and get into the food chain, damaging your health and well-being. When replacing old appliances with new ones, the retailer is legally obligated to take back your old appliance for disposals at least free of charge.

GUARANTEE

Mr Handsfree is a registered trademark of TE-Group NV. The mr Handsfree brand stands for superior product quality and outstanding customer service. That is why mr Handsfree warrants this product against all defects in material and workmanship for a period of **two (2) years** from the date of original purchase of the product. The conditions of this guarantee and the extent of responsibility of mr Handsfree under this guarantee can be downloaded from our website: www.mrhandsfree.com.
 If you need to contact the service department, please send an e-mail to support@mrhandsfree.com.

Free Manuals Download Website

<http://myh66.com>

<http://usermanuals.us>

<http://www.somanuals.com>

<http://www.4manuals.cc>

<http://www.manual-lib.com>

<http://www.404manual.com>

<http://www.luxmanual.com>

<http://aubethermostatmanual.com>

Golf course search by state

<http://golfingnear.com>

Email search by domain

<http://emailbydomain.com>

Auto manuals search

<http://auto.somanuals.com>

TV manuals search

<http://tv.somanuals.com>