

ALL-IN-ONE SECURITY APPLIANCE



ROuteFinder™



what's it do?

The RouteFinder security appliance combines firewall, e-mail anti-virus protection, content filtering, spam filtering and Virtual Private Networking (VPN) in one box. It is a cost-effective, easy-to-manage solution that is ideal for small- to medium-sized businesses looking to add one or all of the following applications to their network:

Firewall Security

As businesses move toward always-on broadband Internet connections, the corporate network becomes more vulnerable to Internet hackers. The RouteFinder security appliance provides a full-featured ICSA-certified Stateful Packet Inspection firewall to provide security from intruders attempting to access the office LAN.

E-mail Anti-Virus Protection

An optional yearly virus protection subscription ensures the network is protected against the latest virus outbreaks.

Content Filtering

An optional URL content filtering subscription allows you to automatically manage what web content is available.

Spam Filtering

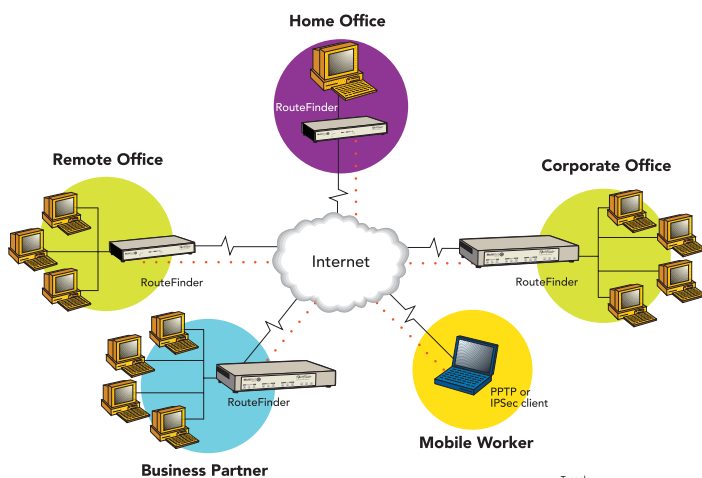
A free spam filtering feature protects your network from unsolicited bulk e-mail utilizing real-time as well as user-definable white and black lists.

Remote User VPN

The RouteFinder security appliance replaces traditional dial-in remote access by allowing a remote user to connect to the corporate LAN through a secure tunnel over the Internet. The advantage is that a remote user can make a local call to an Internet Service Provider, without sacrificing the company's security, as opposed to a long distance call to a corporate remote access server.

Branch Office VPN

The RouteFinder security appliance sends network traffic over the branch office Internet connection instead of relying on dedicated leased line connections. This can save thousands of dollars in line costs and reduce overall hardware and management expenses.



With dozens of new viruses appearing every day, now is the time to invest in Internet security. The Multi-Tech RouteFinder all-in-one security appliance is designed to provide all of the protection you need without compromising network performance. The inexpensive appliance makes it possible for any sized organization to cost-effectively add one or many security applications to their network.

why RouteFinder

- **Stateful Packet Inspection firewall**
- **E-mail anti-virus protection**
- **Content and spam filtering**
- **Secure IPSec and PPTP VPN**

Plug-and-Play Security Appliance

The RouteFinder security appliance plugs in at the Internet connection of each office. It provides three independent network interfaces (LAN, WAN and DMZ) that separate the protected office network from the Internet while offering an optional public network for hosting Web, e-mail or ftp servers. Each network interface is independently monitored and visually displayed on the front of the appliance.

State-of-the-Art Firewall Security

The RouteFinder security appliance is ICSA-certified to provide network layer security utilizing Stateful Packet Inspection, the sophisticated firewall technology found in large enterprise firewalls, to protect the network against intruders and Denial of Service (DoS) attacks. It also uses Network Address Translation (NAT) to hide internal, non-routable IP addresses and allows internal hosts with unregistered IP addresses to function as Internet-reachable servers.



In addition to network layer security, the RouteFinder security appliance provides application level security using SMTP, HTTP, DNS and SOCKS proxies. It also utilizes filters to block specific Internet content to protect against viruses, dangerous ActiveX controls, Java, Javascript, and Cookies. An automatic update feature provides the highest level of security by automatically downloading and installing the latest system software and security patches protecting against any newly discovered hacker attacks with a single click.

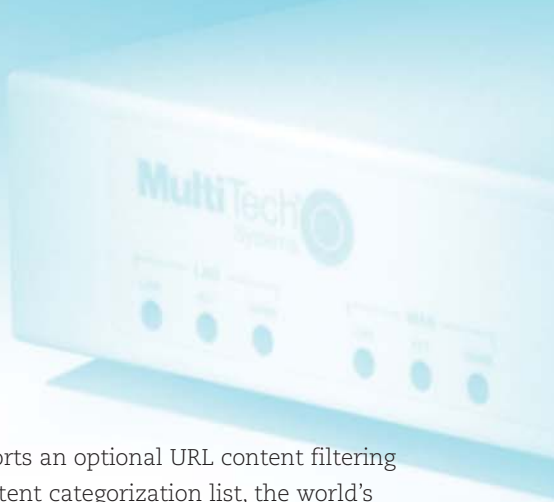
E-mail Anti-virus Protection

Computer viruses are one of the leading security threats to Internet-connected networks. Users can unknowingly receive and launch dangerous viruses that can damage data or cause computer crashes. Viruses can also be used as delivery mechanisms for hacking tools, compromising the security of the network, even if a firewall is installed.



An optional e-mail virus protection subscription utilizes Kaspersky's high-performance, ICSA-tested, anti-virus engine which checks both incoming and outgoing e-mail for viruses in real-time. Automatic anti-virus updates are downloaded at user-defined intervals to ensure protection is current. The e-mail anti-virus protection can be easily renewed on an annual basis. Ask about our free 30-day evaluation.

r?



Content Filtering

The RouteFinder security appliance supports an optional URL content filtering subscription. It utilizes SurfControl®'s content categorization list, the world's largest database of Internet content, which includes 5 million websites covering over 900 million web pages. Daily updates of categorized sites are available for download. In addition, it includes URL access and deny reporting. The subscription can easily be renewed on an annual basis. Ask about our free 30-day evaluation.



Spam Filtering

A free spam filtering feature protects your network from unsolicited bulk e-mail utilizing real-time, as well as, user-definable white and black lists. In addition, the spam filter checks for null sender and bad address patterns in e-mail addresses. It also utilizes the reverse DNS test, as well as, attachment and expression filters.

Secure VPN Connections

The RouteFinder security appliance uses IPSec and PPTP industry standard protocols, data encryption, user authentication, and the Internet to provide high-performance, secure VPN connections. For LAN-to-LAN connectivity, the RouteFinder security appliance utilizes the IPSec protocol with strong 3DES and AES encryption using IKE and PSK key management.

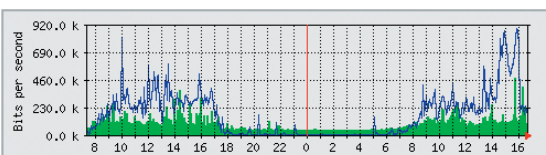
For Client-to-LAN connectivity, Multi-Tech offers optional IPSec client software allowing road warriors and telecommuters secure access to the company's internal network. The RouteFinder security appliance also supports remote users that want to use the PPTP VPN client built into the Windows operating system. This provides 40-bit or 128-bit encryption, user name and password authentication.

Reporting

The RouteFinder security appliance includes a suite of integrated monitoring and reporting tools that help administrators troubleshoot the Internet security system and report Internet usage to management. This includes reporting on system uptime, hardware and network utilization. HTTP and SMTP proxy reports provide information about any actions needed to handle virus-infected e-mails. The RouteFinder security appliance also disables and logs attempted port scans.

In addition, it provides accounting reports and a self-monitor that sends an e-mail notification of system-level issues.

'Daily' Graph (5 Minute Average)



Max In:479.1 kb/s Average In:100.2 kb/s Current In:106.4 kb/s
Max Out:386.3 kb/s Average Out:173.6 kb/s Current Out:226.7 kb/s

Robust, Easy-to-Use Management

The RouteFinder security appliance includes robust management support allowing a network administrator to securely manage the devices either through a web browser or at the command line. The browser-based option uses the HTTP or HTTPS protocol, also known as SSL (Secure Sockets Layer), to provide 128-bit encryption to secure the management session. The command line interface is accessible via SSH (Secure Shell) and supports SCP (Secure Copy).

User Authentication

To increase the level of security, user identity can be verified before access to Internet services is permitted. The RouteFinder security appliance supports authentication at a local user database as well as at external user databases, like Windows 2000 or Radius server.

Automatic Dial Backup

The RouteFinder security appliance provides a serial port that, when connected to a dial-up modem or ISDN terminal adaptor, can serve as a backup resource for Internet access and VPN tunneling if your cable or DSL service goes down. In addition, the RouteFinder RF860 model includes a built-in modem.

QoS/Bandwidth Allocation

Enabling QoS on the RouteFinder security appliances allows administrators to customize upstream and downstream bandwidth allocation. Custom priority rules allow administrators to assign a percentage of available bandwidth based on the packet's protocol. These packet filter rules help mold traffic and set preferential treatment for certain services or host IPs.

Dual WAN Load Balancing, Internet and VPN Failover

The DMZ port, on the RouteFinder security appliance, can also function as a second WAN port for Internet access. This allows for two separate ISP connections giving administrators the ability to balance traffic by distributing it over the two links. In addition, if one port were to go down, the RouteFinder security appliance would automatically re-route all Internet and VPN traffic to the other connection. The second WAN port greatly enhances performance and system uptime.

High Availability

Redundancy is the primary method of increasing any systems' availability. To achieve high availability, the RouteFinder security appliance utilizes a clustering solution, where two RouteFinder appliances act in conjunction with each other with one appliance acting as the main system providing the services and the other acting as a standby system. If the main system were to go down, it would automatically failover to the standby system to provide continuous availability without an interruption of service.

RouteFinder SOHO

The RouteFinder SOHO security appliance is ideal for the small branch office or telecommuter who needs secure access to the corporate LAN. In addition to providing one or two WAN Ethernet port(s) for DSL or cable broadband Internet access, it also offers both client-to-LAN and LAN-to-LAN VPN connectivity based on the IPSec or PPTP protocols. The RouteFinder SOHO security appliance provides 3DES and AES encryption to ensure that your information remains private. Go to www.multitech.com/products for more details.



who's Multi-Tech?

Multi-Tech Systems is an ISO 9001:2000 certified global manufacturer of award-winning telephony, Internet, remote access, and device networking products. Since 1970, Multi-Tech Systems has grown from modest origins to a company with a worldwide reputation for reliable products of innovative design. This reputation is just as strong today. New technologies, same focus: connecting voice and data over IP networks.

Features

	RF860	RF850	RF830 (SOHO model)	RF820 (SOHO model)
APPLIANCE				
Ethernet Ports: LAN	10/100	10/100	4 x 10/100	4 x 10/100
WAN	10/100	10/100	10/100	10/100
WAN2/DMZ	10/100	10/100	10/100 (WAN2 only)	No
Recommended Network Users	100	50	25	25
Rackmount/Standalone	Yes	Yes	Standalone	Standalone
FIREWALL FEATURES				
Stateful Packet Inspection	Yes	Yes	Yes	Yes
Anti-Virus Option	Yes	Yes	No	No
Content Filtering Option	Yes	Yes	No	No
Spam Filtering	Yes	Yes	No	No
Application Proxies	Yes	Yes	No	No
Port and IP Filtering	Yes	Yes	Yes	Yes
Denial of Service Protection (DoS)	Yes	Yes	Yes	Yes
Network Address Translation (NAT)	Yes	Yes	Yes	Yes
Virtual Server	Yes	Yes	Yes	Yes
Intrusion/Port Scan Detection	Yes	Yes	Limited	Limited
H.323 Pass Through	Yes	Yes	Yes	Yes
VPN FEATURES				
Remote User (Client-to-LAN)	Yes	Yes	Yes	Yes
Branch Office (LAN-to-LAN)	Yes	Yes	Yes	Yes
3DES/AES Encryption	Yes	Yes	Yes	Yes
Encryption Throughput	15M bps	5M bps	3M bps	3M bps
IPSec/PPTP VPN	Yes	Yes	Yes	Yes
Total Number of Tunnels*	100	50	15	15
Dynamic-to-dynamic Tunneling	Yes	Yes	Yes	Yes
VPN using FQDN	Yes	Yes	Yes	Yes
x.509 Certificates	Yes	Yes	No	No
MANAGEMENT FEATURES				
E-mail Alerts	Yes	Yes	Yes	Yes
Local and Remote Management	Yes	Yes	Yes	Yes
Logging	Yes	Yes	Yes	Yes
Reporting	Yes	Yes	Limited	Limited
Web Based (HTTP, HTTPS/SSL)	Yes	Yes	HTTP only	HTTP only
Secure Shell (SSH)	Yes	Yes	No	No
Syslog	Yes	Yes	Yes	Yes
OTHER FEATURES				
Shared Internet Access	Yes	Yes	Yes	Yes
Automatic Dial-backup	Yes	Yes	No	Yes
Integrated Modem	Yes	No	No	No
Dual WAN Load Balancing	Yes	Yes	Yes	No
Internet/VPN Failover	Yes	Yes	Yes	No
High Availability	Yes	Yes	No	No
QoS/Bandwidth Allocation	Yes	Yes	No	No
PPPoE	Yes	Yes	Yes	Yes
DHCP Client/server	Yes	Yes	Yes	Yes
User Authentication (Web Access)	Yes	Yes	No	No
Live Updates	Yes	Yes	No	No
Warranty	2 years	2 years	2 years	2 years

* Recommended combined IPSec and PPTP tunnels. Total may vary based on feature usage, applications and available bandwidth.

Ordering Information

WORLD HEADQUARTERS

TEL: (763) 785-3500
(800) 328-9717
sales@multitech.com
www.multitech.com

EMEA HEADQUARTERS – UK

MULTI-TECH SYSTEMS (EMEA)
TEL: +(44) 118 959 7774
sales@multitech.co.uk

SALES OFFICE – FRANCE

MULTI-TECH SYSTEMS (EMEA)
TEL: +(33) 1-64 61 09 81
sales@multitech.fr

PRODUCT	DESCRIPTION	REGION
RF860*	Internet Security Appliance	Global
RF850*	Internet Security Appliance	Global
RF830*	SOHO Internet Security Appliance	Global
RF820*	SOHO Internet Security Appliance	Global
RFIPSC2-1	IPSec VPN Client 1-user	Global
RFIPSC2-5	IPSec VPN Client 5-user	Global
RFIPSC2-10	IPSec VPN Client 10-user	Global
RFVUPG-860	1-Year Anti-virus Upgrade/Renewal	Global
RFVUPG-850	1-Year Anti-virus Upgrade/Renewal	Global
RFCFUPG-860	1-Year Content Filter Upgrade/Renewal	Global
RFCFUPG-850	1-Year Content Filter Upgrade/Renewal	Global

* These products may have country-specific versions for regions not listed. Specify country when ordering.

Features and specifications are subject to change without notice.

RouteFinder, Multi-Tech & the Multi-Tech logo are trademarks of Multi-Tech Systems, Inc. All other trademarks or registered trademarks are the property of their respective owners.



Free Manuals Download Website

<http://myh66.com>

<http://usermanuals.us>

<http://www.somanuals.com>

<http://www.4manuals.cc>

<http://www.manual-lib.com>

<http://www.404manual.com>

<http://www.luxmanual.com>

<http://aubethermostatmanual.com>

Golf course search by state

<http://golfingnear.com>

Email search by domain

<http://emailbydomain.com>

Auto manuals search

<http://auto.somanuals.com>

TV manuals search

<http://tv.somanuals.com>