

# Information for Four Stage ENGINE Driven Compressor Applications



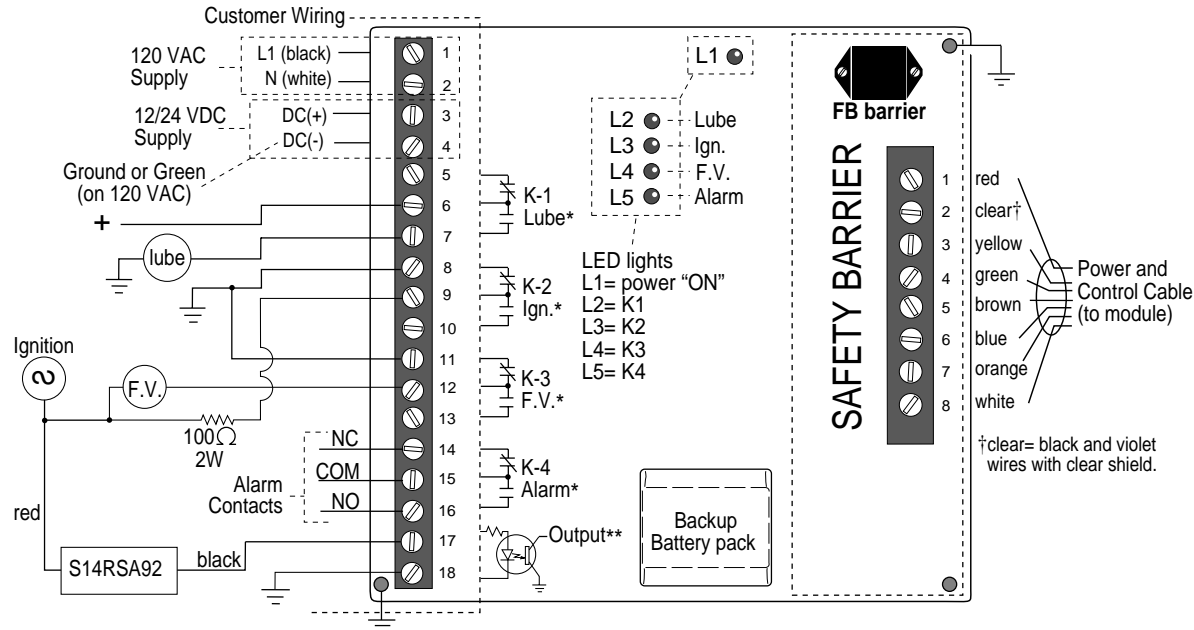
Attachment to Installation and Operation Manual for SELECTRONIC® Annunciator Series 1400

## TYPICAL WIRING DIAGRAM



**WARNING:** Perform the wiring operation with the power source **OFF** and the area made **NON-HAZARDOUS**. Voltage and current requirements should be within the S1400 ratings. Use hard conduit with seal to protect the wiring from damage. **DO NOT** route sensor leads and power leads in the same conduit.

### S1400-PS (120 VAC, 12 or 24 VDC Power Supply)



\*K-1 thru K-4 are relay outputs, form "C" dry contacts 250 VAC @ 3A maximum.

\*\*Optically-isolated input (for run indication) 24-120 VAC maximum.

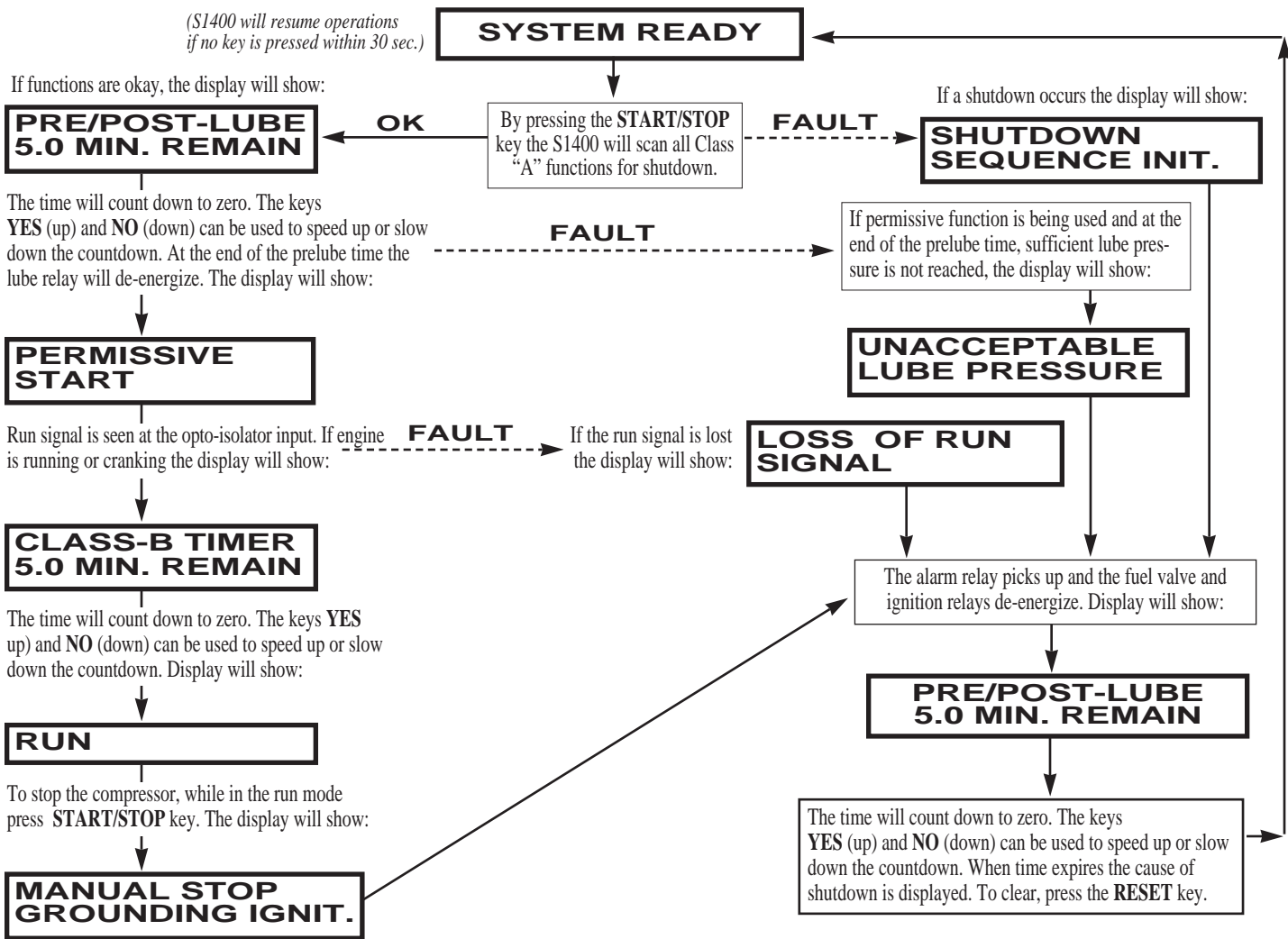
### STANDARD PROGRAM

CHANNEL	DISPLAY*	CONDITION	LOCKOUT CLASS	FUNCTION
01	COMPRESSOR OIL PRESSURE	(LOW)	B	SHUTDOWN
02	COMPRESSOR OIL LEVEL	(LOW)	A	SHUTDOWN
03	LUBRICATION NO-FLOW	-	B	SHUTDOWN
04	LOW SUCTION PRESSURE	(LOW/HIGH)	B	SHUTDOWN
05	INTERSTAGE PRESSURE #1	(LOW/HIGH)	B	SHUTDOWN
06	INTERSTAGE PRESSURE #2	(LOW/HIGH)	B	SHUTDOWN
07	INTERSTAGE PRESSURE #3	(LOW/HIGH)	B	SHUTDOWN
08	DISCHARGE PRESSURE	(LOW/HIGH)	B	SHUTDOWN
09	ENGINE OVERSPEED	-	A	SHUTDOWN
10	DISCHARGE TEMPERATURE #1	(HIGH)	A	SHUTDOWN
11	DISCHARGE TEMPERATURE #2	(HIGH)	A	SHUTDOWN
12	DISCHARGE TEMPERATURE #3	(HIGH)	A	SHUTDOWN
13	DISCHARGE TEMPERATURE #4	(HIGH)	A	SHUTDOWN
14	SUCTION LIQUID LEVEL	(HIGH)	A	SHUTDOWN
15	INTERSTAGE LIQUID LEVEL #1	(HIGH)	A	SHUTDOWN
16	INTERSTAGE LIQUID LEVEL #2	(HIGH)	A	SHUTDOWN
17	INTERSTAGE LIQUID LEVEL #3	(HIGH)	A	SHUTDOWN
18	INLET SCRUBB. LIQUID LEVEL #1	(HIGH)	A	SHUTDOWN
19	ENGINE OIL PRESSURE	(LOW)	B	SHUTDOWN
20	ENGINE OIL LEVEL	(LOW)	A	SHUTDOWN
21	ENGINE VIBRATION	(HIGH)	A	SHUTDOWN
22	ENGINE JACKET/WATER TEMP.	(HIGH)	B	SHUTDOWN
23	ENGINE JACKET/WATER LEVEL.	(LOW)	A	SHUTDOWN
24	ENGINE JACKET/WATER PRESS.	(LOW)	B	SHUTDOWN
25	ENGINE VACUUM RIGHT BANK	(LOW)	B	SHUTDOWN
26	ENGINE VACUUM LEFT BANK	(LOW)	B	SHUTDOWN
27	COMPRESSOR VIBRATION	(HIGH)	A	SHUTDOWN
28	COOLER VIBRATION	(HIGH)	A	SHUTDOWN
29	COOLER WATER LEVEL	(LOW)	A	SHUTDOWN
30	AUXILIARY PUMP PRESSURE	(LOW)	B	SHUTDOWN
31	EMERGENCY SHUTDOWN	-	A	SHUTDOWN
32	PRELUBE PERMISSIVE	-	-	SHUTDOWN

\*Actual Display will be arranged into 2-lines, 16 characters each.

## SEQUENCE OF OPERATIONS FOR ENGINE DRIVEN COMPRESSOR

**POWER UP THE SYSTEM:** Make sure the D-sub miniature connector from power and control cable is secured to the back of the S1400 module. The display will show: **SYSTEM READY**. Anytime primary power input signal is lost, the **PRIMARY POWER FAILURE** message will be displayed.



### TEST TIMER

While in **SYSTEM READY** or **RUN**, press the **MODE** key and the display will show:

**TEST TIMER INITIALIZE ? (NO)**

If the **YES** (up) key is pressed the test timer will begin and sensor inputs can be tested without shutting down.

*Pressing **NO** (down) or **MODE** keys will take you into the **PRESETTING PARAMETERS** mode.*

Test the sensor input (by tripping the end device), then the name and number for the sensor will be displayed. Clear the sensor, then press the **RESET** key, the display will show:

**TEST TIMER X.X MIN. REMAIN**

The display will show the remaining time. At the end of the test or to cancel press the **MODE** key, this will take you into the **PRESETTING PARAMETERS**, to return to **RUN** or **SYSTEM READY** press the **MODE** key again.

### PRESETTING PARAMETERS

While in the **TEST TIMER** mode, press the **MODE** key and the display will show:

**PRESET CLASS-B TIMER 5.0 MIN.**

Press **YES** (up) or **NO** (down) keys to increase or decrease the values. Press **ENTER** key to accept new values. Press **MODE** to display the next parameter to be set. Repeat the above for each value to be preset. Preset displays will be shown in the following sequence every time **MODE** is pressed while in **PRESETTING PARAMETERS** mode.

**PRESET - 0.1 MIN. IGN. GND.**

**PRESET - 5.0 MIN. PRELUBE**

**PRESET - 5.0 MIN. POST LUBE**

**CLASS - B TIMER INITIALIZE [NO]**

Press the **MODE** key again to return to **SYSTEM READY** or **RUN** display.

## Free Manuals Download Website

<http://myh66.com>

<http://usermanuals.us>

<http://www.somanuals.com>

<http://www.4manuals.cc>

<http://www.manual-lib.com>

<http://www.404manual.com>

<http://www.luxmanual.com>

<http://aubethermostatmanual.com>

Golf course search by state

<http://golfingnear.com>

Email search by domain

<http://emailbydomain.com>

Auto manuals search

<http://auto.somanuals.com>

TV manuals search

<http://tv.somanuals.com>