



## IN-WALL LOUDSPEAKER SYSTEMS



1 Mitek Plaza  
Winslow, IL 61089  
815-367-3000  
800-225-5689  
[www.MusicaAtHome.com](http://www.MusicaAtHome.com)

## MUSICA502W / MUSICA602W OWNER'S MANUAL

---

21A7331

## CONGRATULATIONS

We appreciate your choice of MUSICA In-Wall Speakers. Properly installed and operated, MUSICA In-Wall Loudspeakers should provide years of worry free listening pleasure. It's important that you follow each step in this guide carefully to insure proper installation.

<b>SPECIFICATIONS</b>	<b>MUSICA502W</b>	<b>MUSICA602W</b>
<b>Frequency Response</b>	53Hz-20kHz +/- 3dB	43Hz-20kHz +/- 3dB
<b>Power Handling</b>	45W RMS/ 90W Peak Music	50W RMS 100W Peak Music
<b>Sensitivity (1W/1M)</b>	84dB	85dB
<b>Woofers Diameter</b>	5-1/4"	6-1/2"
<b>Tweeter</b>	1/2" Polycarbonate Balanced Dome	1/2" Polycarbonate Balanced Dome
<b>Mounting Depth</b>	2-1/2" (63.5mm)	3" (76.2mm)
<b>Baffle Size</b>	11"H x 7-1/2"W (279.4mm x 190.5mm)	12-1/16"H x 8-5/8"W (306.4mm x 219.1mm)
<b>Cutout Size</b>	9-1/2"H x 6-1/16"W (241.3mm x 154.0mm)	10-5/8"H x 7-1/4"W (269.9mm x 184.2mm)

## PAINTING YOUR MUSICA IN-WALLS

MUSICA In-Wall Speakers are designed to accept all types of interior and exterior paints. Spray or roller application should provide excellent results. A paint shield is included with all MUSICA In-Wall Speakers to protect the speakers during the painting process.

## MUSICA WARRANTY INFORMATION

All MUSICA In-Ceiling Speakers purchased in the United States from an authorized MUSICA dealer are guaranteed against defects in material and workmanship for a period ten years from the date purchased by the end user, and limited to the original retail purchaser of the product. Product found to be defective during that period will be repaired or replaced by MUSICA at no charge. This warranty is void if it is determined that unauthorized parties have attempted repairs or alterations of any nature. Warranty does not extend to cosmetics or finish. Before presuming a defect is present in the product, be certain that all related equipment and wiring is functioning properly. MUSICA disclaims any liability for other incurred damages resulting from product defects. Any expenses incurred in the removal and reinstallation of product is not covered by this warranty. MUSICA's total liability will not exceed the purchase price of the product. If a defect is present, your authorized MUSICA dealer may be able to effect repairs.

Proof of purchase is required when requesting service, so please retain your sales receipt and take a moment to register your product on line at [www.MusicaAtHome.com](http://www.MusicaAtHome.com).

## OTHER PRODUCTS FROM MUSICA

MUSICA offers a wide assortment of audio components, ranging from In-Ceiling Speakers to Cabinet Speakers to accessories. Each component is engineered for value and performance and must meet strict quality control standards before it becomes part of the MUSICA product Line. Listed below you will find a sampling of components available from your authorized MUSICA dealer.

### MUSICASS6

6 Position Speaker Selector  
Accommodates up to 6 pair of speakers  
Power Handling: 40W/Channel continuous RMS, 120W Peak Music  
Impedance Protection Circuitry  
Accommodates up to 12 gauge wire

### MUSICA625C

In-Ceiling Loudspeaker  
6 1/2" Polypropylene  
Tweeter: 1" Soft Dome  
Impedance: 8 ohms nominal  
Sensitivity: 85dB  
Power Handling: 55 Watts RMS/110 Watts Peak Music  
Frequency Response: 48Hz-20kHz  
Dim's: 9"DIA x 3 1/2"D  
Mounting Depth: 2 15/16" (74.6mm)

### MUSICA6S

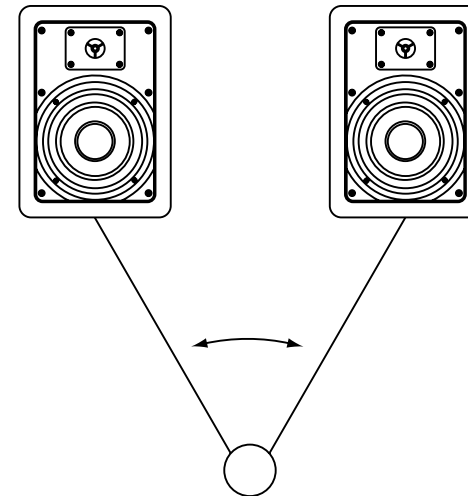
6 1/2" Two-Way Bookshelf Loudspeaker  
Woofer: 6 1/2" Polypropylene  
Tweeter: 3/4" Balanced Dome  
Impedance: 8 ohms nominal  
Sensitivity: 89dB  
Power Handling: 100W RMS/200W Peak Music  
Frequency Response: 55Hz-20kHz  
Dim's: 12 3/4"H x 7 1/2"W x 8 1/2"D

## TECHNICAL ASSISTANCE

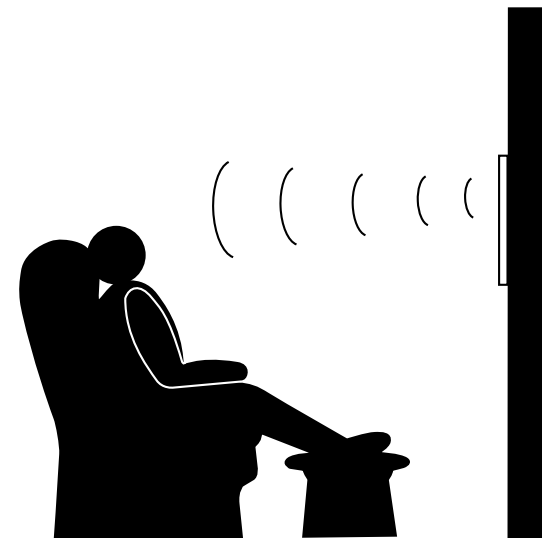
For additional technical assistance you can visit our website at [www.MusicaAtHome.com](http://www.MusicaAtHome.com). Otherwise, our technical service representatives can be reached by phone: 1-800-225-5689 or by E-mail: [musica@mitekcorp.com](mailto:musica@mitekcorp.com).

## LOUDSPEAKER PLACEMENT

MUSICA In-Wall Speakers are designed to work within any interior decorating scheme. They can be installed in virtually any location where flush mounting is possible. To maximize their sound performance however certain guidelines should be followed. For the best stereo reproduction the two loudspeakers should be placed an equal distance from your listening position and separated so that the angle between them, at the listening position, is between 40 and 60 degrees.

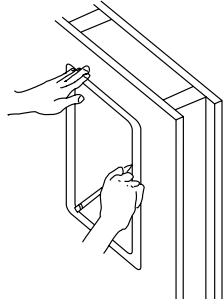


For best stereo imaging, we recommend that the units be placed so that the tweeters are as close as possible to the ear level of a seated listener.



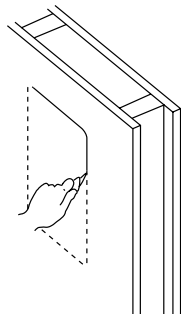
### STEP 1

Using a stud finder (available at low cost at most hardware stores) or other accurate method, locate center point between two studs and mark. Using template provided, trace hole pattern on surface of wall. Placing a bubble level on either the horizontal or vertical guidelines of template will assist you in leveling the hole pattern.



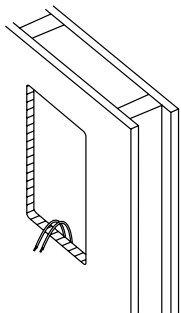
### STEP 2

Using a sabre saw, keyhole saw or very sharp utility knife, cut hole in wall, following traced pattern.



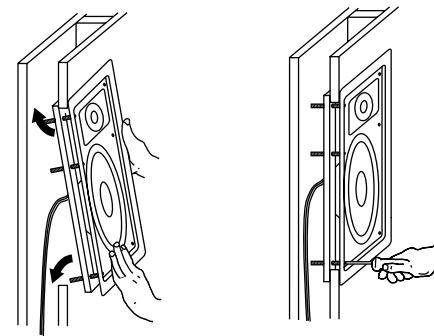
### STEP 3

Run loudspeaker wires to sound source location. There are several methods you can use to accomplish wiring, depending on the construction characteristics of the room or house. You can add a professional touch to your installation by using a speaker terminal plate at the source location. Leave sufficient amount of wire at speaker location (8 to 10 inches) to complete connection.



### STEP 4

Attach loudspeaker wires to speaker terminals, observing correct polarity (positive to positive and negative to negative), and position panel and frame assembly to hole as shown. Insert top of mounting frame into hole at top. By moving bottom of frame upwards, you should now be able to insert bottom of frame into hole at bottom. Be careful not to pinch loudspeaker wires in the process. Tighten long screws. Use a level during tightening to insure straightness of final position.

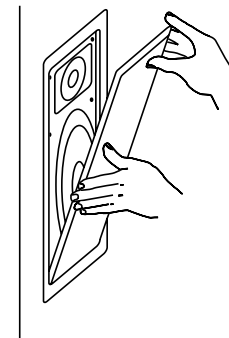


### STEP 5

After speaker panel is secured tightly, test for sound.

### STEP 6

When you are satisfied the speaker is operational, affix grill. As grill is designed for a snug fit, you'll need to position one edge into slot first, and press or squeeze around perimeter of grill, while pushing leading edges into grill slot.



## Free Manuals Download Website

<http://myh66.com>

<http://usermanuals.us>

<http://www.somanuals.com>

<http://www.4manuals.cc>

<http://www.manual-lib.com>

<http://www.404manual.com>

<http://www.luxmanual.com>

<http://aubethermostatmanual.com>

Golf course search by state

<http://golfingnear.com>

Email search by domain

<http://emailbydomain.com>

Auto manuals search

<http://auto.somanuals.com>

TV manuals search

<http://tv.somanuals.com>