



User's manual MobileNavigator BLUE Edition

as on October 2004

Impressum

NAVIGON GmbH
Berliner Platz 11
D-97080 Würzburg

Hotline (dtms-Service, 0,12 €/min): +49 180-5-NAVIGON (+49 180-5-6284466)

The information contained herein may be changed at any time without prior notification. This manual nor any parts thereof may not be reproduced for any purpose whatsoever without the express written consent of NAVIGON GmbH, nor transmitted in any form either electronically or mechanically, including photocopying and recording.

© Copyright 2004, NAVIGON GmbH
All rights reserved.

Table of contents

1	Introduction.....	3
1.1	Important safety information	4
1.1.1	Safety information on navigation	4
1.1.2	Safety information on the GPS receiver	5
1.1.3	Safety information on the installation in the vehicle.....	5
1.2	Search facilities and conventions.....	6
1.3	Liability	6
1.3.1	Support	7
1.4	Trademarks	7
2	Installation and quick-start guide.....	9
2.1	Operating mode of your navigation system.....	10
2.2	Installation of the navigation system	11
2.2.1	Inserting the memory card into the device	11
2.2.2	Installing the navigation software	11
2.2.3	Software registration and activation	12
2.2.4	Installation in the vehicle.....	14
2.2.5	Fitting MobileNavigator on your bike	15
2.2.6	Starting navigation	16
3	Operating the navigation software.....	19
3.1	Starting MobileNavigator.....	20
3.1.1	Basic settings	21
3.2	User interface and basic functionality	25
3.2.1	Icons.....	25
3.2.2	Hardware keys.....	27
3.3	Indicating destinations.....	29
3.3.1	Entering a destination manually.....	30
3.3.2	Selecting a special destination.....	32
3.3.3	Indicating destinations on the map	36
3.3.4	Saved destinations	38
3.3.5	Recent destinations	39
3.3.6	Save and use your home address	42
3.4	Working with the map	44
3.4.1	Operating the map	45
3.4.2	Representation of the map in navigation mode	49
3.4.3	Displaying additional information on the map	51
4	Navigation and Itinerary planning	53
4.1	General notes on navigation	54
4.2	Navigating to a destination.....	55
4.3	Navigating to several destinations (Itinerary planning)	57
4.3.1	Working on itineraries, storage and management.....	59
4.3.2	Simulating the route	60
4.4	Functions which are useful for navigation	61
4.4.1	Displaying the route list.....	61
4.4.2	Adding a stage point during navigation	62
4.4.3	Blocking a route section	63

5	Appendix.....	65
5.1	Configuration of MobileNavigator.....	66
5.1.1	Map information	66
5.1.2	Route information.....	67
5.1.3	Volume	67
5.1.4	Representation.....	68
5.1.5	Touch screen calibration	68
5.1.6	Auto mode	68
5.1.7	Speed profile	69
5.1.8	Itinerary	69
5.1.9	Time zone	69
5.1.10	Format.....	69
5.1.11	Home address.....	70
5.1.12	Radio-Mute.....	70
6	Glossary	71
7	Index	73

1 Introduction

Topics covered in this chapter:

1.1	Important safety information	page 4
	Safety information on navigation	
	Safety information on the GPS receiver	
	Safety information on the installation in the vehicle	
1.2	Search facilities and conventions	page 6
1.3	Liability	page 6
	Support	
1.4	Trademarks	page 7

1.1 Important safety information

Note

In your own interest, read the following notices and safety information carefully before starting up your navigation system.

1.1.1 Safety information on navigation

The use of **MobileNavigator** may only be effected at your own risk.



Attention: To protect yourself and others from accidents please do not operate the navigation system while driving!



Attention: You must not look at the display except when it is absolutely safe to do so!



Attention: The road layout and the traffic signs are absolutely prior to the instructions of the navigation system.



Attention: You must not follow the instructions of **MobileNavigator** except when the circumstances and the road traffic regulations allow doing so. **MobileNavigator** will guide you to your destination even when you have left your planned itinerary.



Notice: We recommend to effect route planning before beginning the journey. If you are on the road and you want to establish a new itinerary, please drive to the next parking site!



Notice: If you have not understood the instructions or if you are not sure about what to do next you may quickly refer to the map or arrow view of your navigation system.

1.1.2 Safety information on the GPS receiver



Attention: As it is not waterproof, don't expose your GPS receiver to water!



Attention: Do not install the cable next to security relevant equipment and supply lines.



Attention: Please check the security relevant equipment when you have installed the navigation system.



Attention: The GPS receiver should be disconnected from the power supply while your car is parking. As it spends energy permanently you might risk discharging the car battery.



Attention: The installation of the GPS receiver must not interfere with the sure operation of your car.



Notice: Do not varnish the GPS receiver. Doing so might impede the reception of GPS signals.



Notice: Do not use any harsh solvents for cleaning the GPS receiver. A damp cloth is sufficient! You might damage the case of the GPS receiver.



Notice: Do not unplug by pulling the cable. This might damage the cable!



Notice: Do not fold the cable. Check that the cable may not be damaged by any sharp object.

1.1.3 Safety information on the installation in the vehicle



Attention: Do not fix the holder within the deployment zone of airbags.



Attention: When you install the holder, please check that it may not constitute any safety risk, even in case of an accident.

1.2 Search facilities and conventions

Find information quickly




This manual offers the following search facilities:

- ⇔ In the footnote at the bottom of the page, you may check which chapter and which section you are actually reading.
- ⇔ A glossary at the end of the manual contains explanations on the technical terms used in this manual.
- ⇔ An index at the end of the manual allows precise search for the information contained in this manual.

Conventions

The conventions on the fonts and symbols used in this manual are explained in the two following tables:

Font	Use
bold	Buttons, icons, names of entry fields, and elements of the software's user interface. Also used for highlighting warnings and notices.
<i>bold italic</i>	Registered names and trademarks.
SMALL CAPITALS	Window and dialogue box titles.

Symbol	Use
	Indicates hints and notices that may ease the use of MobileNavigator .
	Indicates additional information.
	Warns against dangers that might cause damage to objects and persons.

1.3 Liability

Limitation of liability

The software and the manual are subject to change without notice. NAVIGON GmbH may not be liable for the correctness of the information contained in this manual nor for damages resulting from the use of this manual.

To improve the quality of our products and our services, we appreciate all suggestions for improvement and all error notices.

1.3.1 Support

You need help?

Call our support staff for **Telephone support:**
Mondays to Fridays 9am to 6pm
+49 180-5-NAVIGON (0180-5-6284466)
(dtms-Service, 0,12 €/min)

Or call our **Fax support:**
+49 180-5-6284444
(dtms-Service, 0,12 €/min)

Further information may also be found on the web site of
NAVIGON GmbH (www.navigon.com) in the **Support** section.

1.4 Trademarks

*Registered
trademarks*

All brands and trademarks mentioned in this document are possibly registered by third party and subject to the current legislation and to the rights of their respective owners without reservation. All mentioned names of products, societies, or brands may be registered trademarks of their respective owners. Every right that is not explicitly accorded is reserved.

The absence of an explicit labelling of registered trademarks does not allow the conclusion that this brand was not subject to the rights of third party.

⇔ Windows and ActiveSync are registered trademarks of the Microsoft Corporation.

2 Installation and quick-start guide

Topics covered in this chapter:

2.1	Operating mode of your navigation system	page 10
2.2	Installation of the navigation system	page 11
	Inserting the memory card into the device	
	Installing the navigation software	
	Software registration and activation	
	Installation in the vehicle	
	Fitting MobileNavigator on your bike	
	Starting navigation	

2.1 Operating mode of your navigation system

MobileNavigator

The time of complicated and frustrating inquiries on the right way in folded maps is over. From now on **MobileNavigator**, your navigation system, will guide you, based on satellite information, quickly and safely to your destination.

GPS-based navigation

Based on satellites the **Global Positioning System (GPS)** determines your current geographical position. The GPS has originally been developed as a weapon guidance system for the American forces.

Operating mode of the GPS

The GPS is based on 24 satellites, which are in orbit round the earth. They are permanently emitting the time and their current position. The GPS receiver receives this information and calculates the longitude and the latitude of its own actual position.

The signals of at least three satellites are needed to determine the longitude and the latitude. With the signals of at least four satellites the elevation may be calculated, too. The determination has an accuracy of about 3 yards.

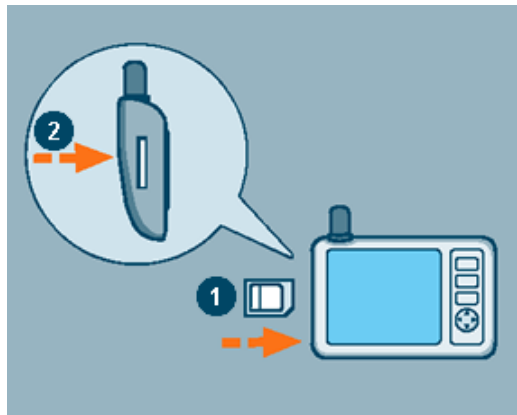
2.2 Installation of the navigation system

2.2.1 Inserting the memory card into the device

Insert the memory card into the device...

Before using **MobileNavigator** you must insert the memory card containing the cartographic data into the device.

1. Unpack the memory card carefully. Pay attention not to touch contacts and not to make them dirty.
2. Hold the memory card **1** as shown below (label up, cut corner bottom right). Insert the memory card into the respective slot **2** at the left of the device. It should snap in.

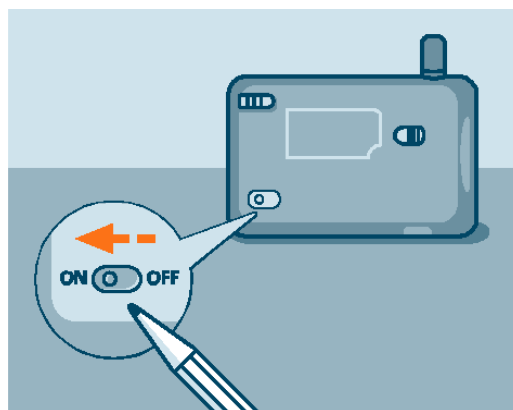


Notice: The memory card must stay inserted in the device while you are using the navigation system. If you remove the card while using the system, it executes a soft reset and prompts you to insert the memory card.

2.2.2 Installing the navigation software

Install the navigation software...

1. Take the stylus and push the main switch on the pack of the device to the **ON** position.



The brand logo is being displayed for a short time. The installation procedure starts automatically. After a few seconds, the system prompts you to enter the activation

code.

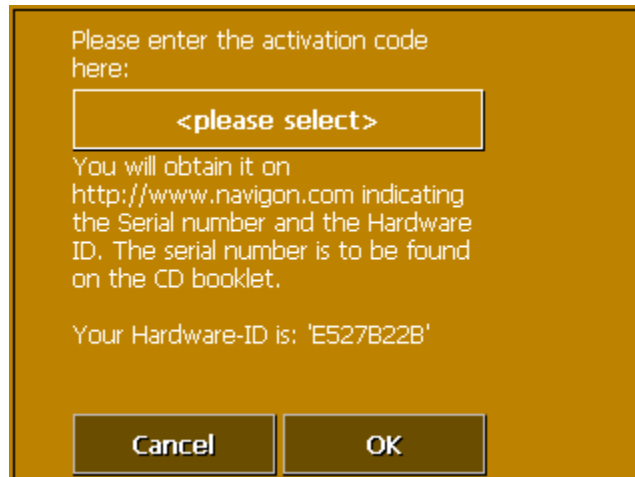


Notice: Depending on the battery charging state, it may happen that you have to charge the device for a while before the installation may be executed.

2.2.3 Software registration and activation

Activation code

At the first start of **MobileNavigator** you will be prompted to enter an activation code. You cannot start the software without entering this code.



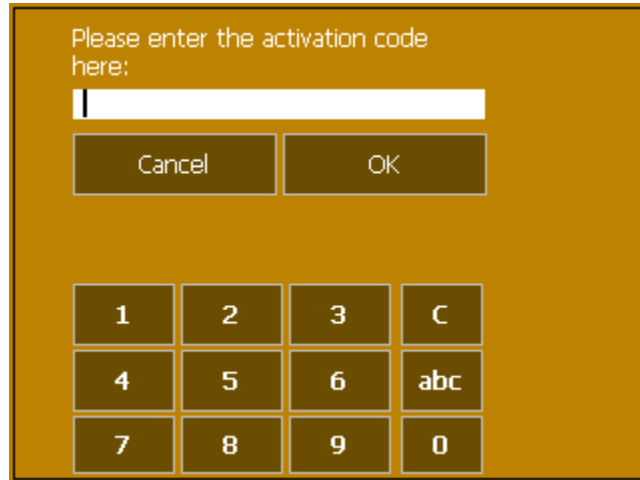
To obtain the activation code, you will need the serial number, which is printed on the back of the **MobileNavigator** booklet and the Hardware-ID, which is indicated at the first start of the software.

With these two numbers you may obtain the activation code:

- ⇔ in the web on www.navigon.com
- ⇔ by SMS: simply send the serial number, device ID, your first name surname and email address (separated by commas) to: **+49 (0) 176 – 888 333 88** or
- ⇔ by phone from our support staff: +49 180-5-6284466 (dtms-Service, 0,12 €/min).

1. Tap the **<please select>** button.

The **ACTIVATION CODE** screen opens:



Please enter the activation code here:

Cancel OK

1	2	3	C
4	5	6	abc
7	8	9	0

2. Enter the activation code into the respective entry field.
3. Tap the **OK** button.



Notice: Keep the activation code at a safe place. You might need it later, e.g. when you reinstall the software on your Pocket PC.

2.2.4 Installation in the vehicle



Attention: The mounted holder must not impede the driver's attention on the traffic. If this is not possible, mount the holder somewhere else so that safe driving is granted.

Mounting the holder...

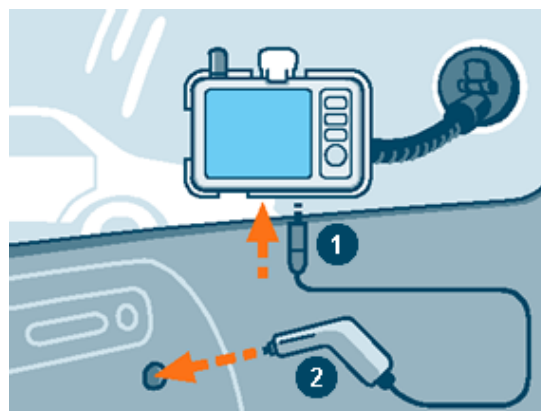


Notice: Take notice of the inscription on the swan-neck mount. The arrow with the inscription **close** must show in snap-on direction. The connection must snap on audibly.

1. Attach the cradle of the device to the swan-neck mount.
2. Place the suction cup on the windscreen. Press the lever firmly to the windscreen before switching it.
3. Insert the device into its holder. First place the bottom of the device correctly, then push it backwards until it snaps into the clip.

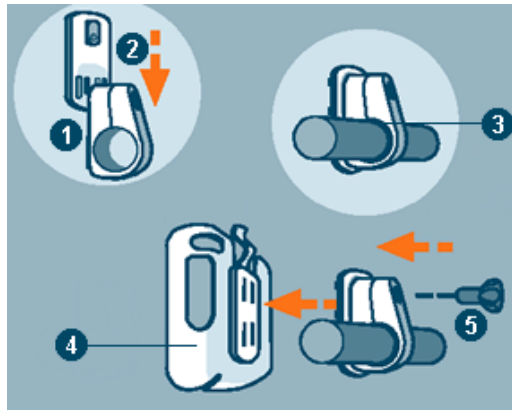


4. Insert the chinch jack ① of the power supply cable into the respective socket at the bottom of the device.
5. Insert the power jack ② into the cigarette lighter.

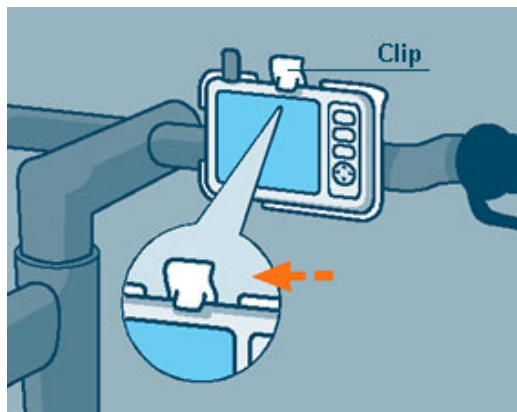


2.2.5 Fitting MobileNavigator on your bike

Mount the fitting...



1. Connect the clamp ① and the mounting plate ②. Pull the clamp round the handle bar as represented above (opening up, plate towards the driver). Do not forget to put the rubber band ③ which is included in the delivery between the handle bar and the clamp. The clamp is flexible, so you can open it carefully, place it round the handle bar and close it.
2. Put the cradle of the device ④ onto the mounting plate ②. Push the holder downwards until it snaps in noticeably. Please note that there is only one correct position for the holder to be fitted.
3. Fix the complete holder kit with the included screw ⑤. Fasten the screw only slightly for the moment.



4. Insert the device into its cradle. Verify that the clip snaps noticeably!
5. Turn the holder until you may read the screen well while sitting on the bike.
6. Fasten the screw.

2.2.6 Starting navigation

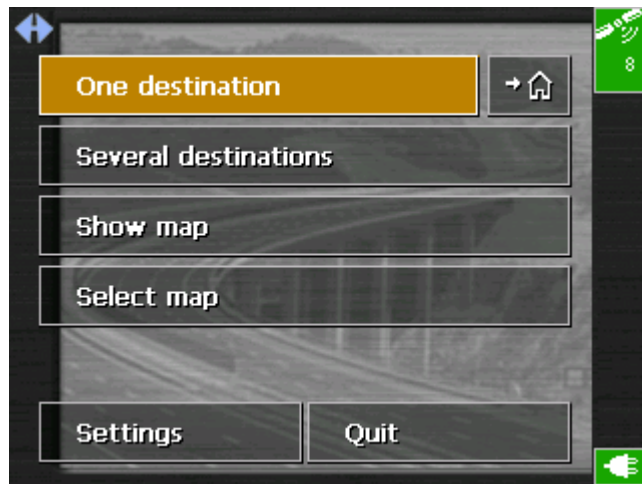
Use your navigation system...

1. Turn on your **MobileNavigator**.

At the first start of **MobileNavigator**, the following message appears:



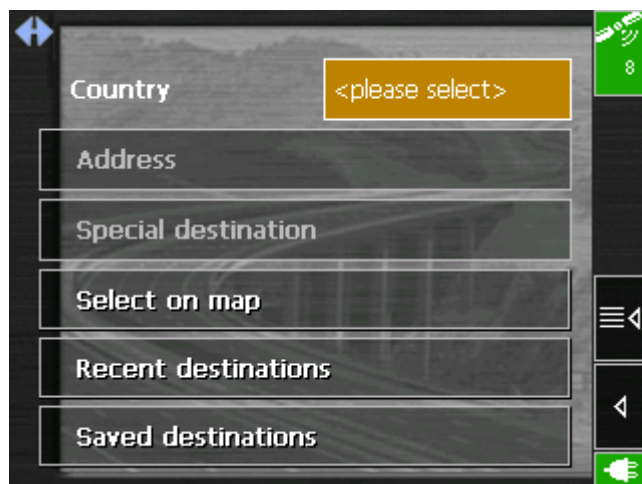
2. Tap the **I accept** button. If you do not accept and if you tap the **I refuse** button, the device turns off.
3. The **MAIN SCREEN** appears.



4. Tap the **One destination** button to enter your destination.



The **DESTINATION** screen opens:



5. Tap the **Address** button.

The **ADDRESS** screen opens:



6. Enter the name of the destination town into the **Town** field.
7. Enter the name of the destination street into the **Street** field. Enter the house number if possible.
8. Tap the **Start navigation** button.



For details on the functions of your navigation system, please refer to "Operating the navigation software", page 19, and to "Navigation and Itinerary planning", page 53.

3 Operating the navigation software

Topics covered in this chapter:

3.1	Starting MobileNavigator Basic settings	page 20
3.2	User interface and basic functionality Icons	page 25
3.3	Indicating destinations Entering a destination manually Selecting a special destination Indicating destinations on the map Saved destinations Recent destinations Save and use your home address	page 29
3.4	Working with the map Operating the map Representation of the map Displaying additional information on the map	page 44

3.1 Starting MobileNavigator

Precondition

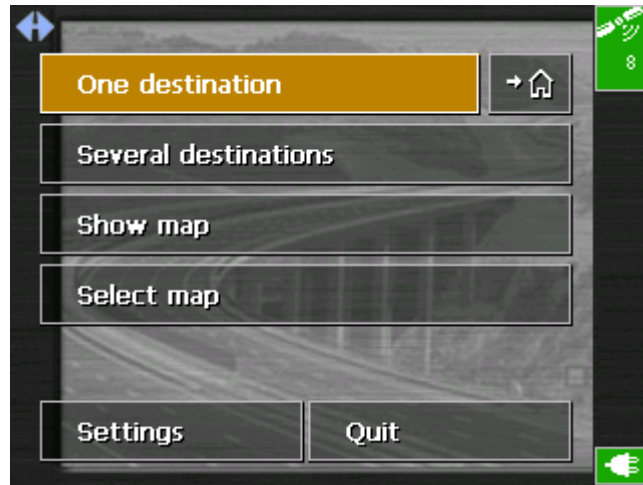
You have carried out installation and activation of **MobileNavigator** as described in "Installation of the navigation system", page 11.

Starting the navigation software...

1. Turn **MobileNavigator** on.

The **MAIN SCREEN** opens:

Main screen



All functions of the program are accessible via the **MAIN SCREEN**.



Notice: When you turn **MobileNavigator** on, it shows the screen, which was displayed when **MobileNavigator** was turned off. Nevertheless, you may access the Main screen from all other screens by tapping



Indicate a destination

Tap this button to indicate a destination for navigation (one stage).



For details, please refer to "Indicating destinations", page 29.

Navigating home

Tap this button to navigate to your home address.



For details, please refer to "Save and use your home address", page 42.

Several destinations

Tap this button for itinerary planning purposes.





For details, please refer to "Navigating to several destinations (Itinerary planning)", page 57.

Show map

Tap this button to display the map currently in use.



Select map

Tap this button to select another map, which is stored on your device.



For details, please refer to "Working with the map", page 44.

Settings

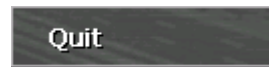
Tap this button to modify the settings of **MobileNavigator**.



For details, please refer to "Configuration of MobileNavigator", page 66.

Quit

Tap this button to quit **MobileNavigator**.



3.1.1 Basic settings

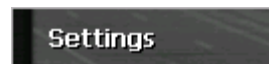
Basic settings

Before working with **MobileNavigator**, we recommend

- ⇔ indicating the time zone of the region you are staying in currently so that the system can indicate correct times of arrival in navigation mode,
- ⇔ entering the home address. You may then navigate home from anywhere.

Indicate the time zone

1. On the **MAIN SCREEN**, tap **Configuration**.



The **CONFIGURATION** screen opens.

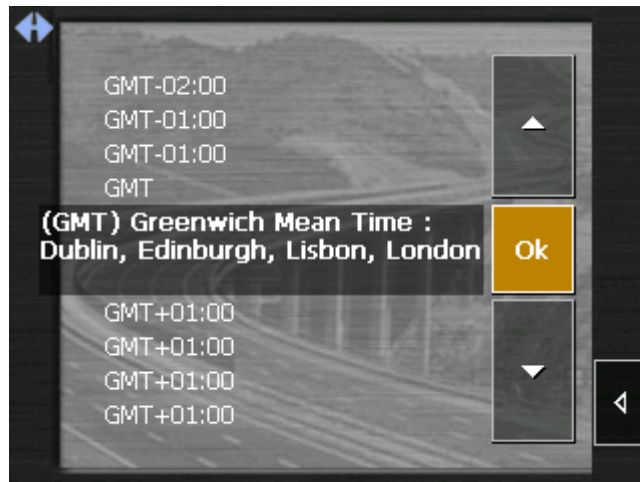
2. Via the arrow buttons, select the **TIME ZONE** screen.



3. Tap into the **Time zone** entry field.



The **SELECT THE TIME ZONE** screen opens.



4. Select the time zone of the region you are currently staying in. (GMT without daylight saving time). The indication of capitals lying in the respective time zones makes the selection easier.
5. Tap **Ok**.
6. If there is currently daylight saving time, tap the **Daylight saving time** entry field. The entry switches to **Yes**.

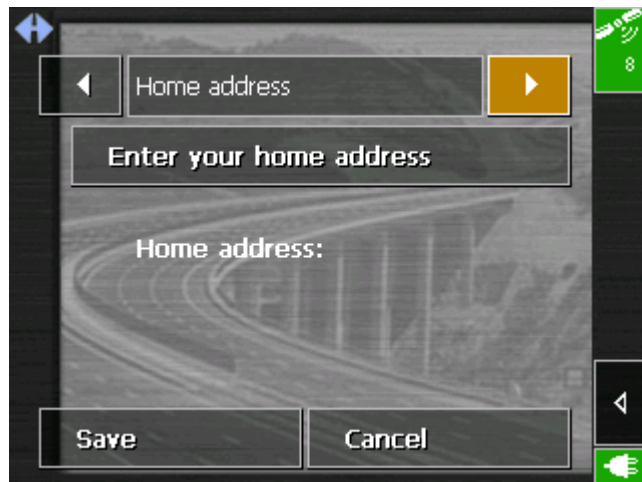


Saving your home address

In **MobileNavigator**, you may save your home address to quickly start navigation homewards from anywhere.

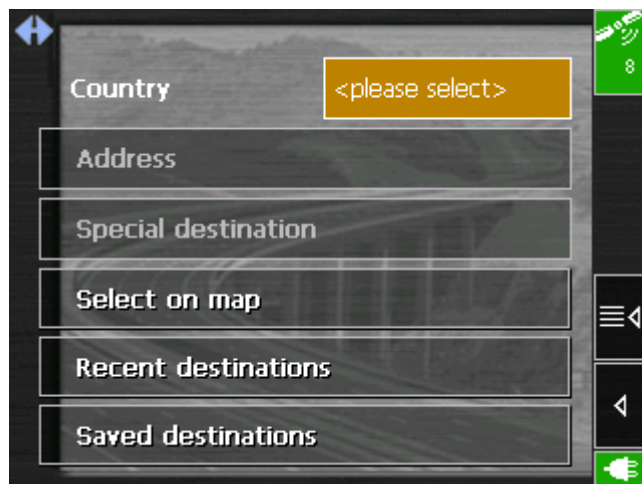
1. On the **MAIN SCREEN**, tap **Settings**.
The **SETTINGS** screen opens.

2. Via the arrow buttons, select the **HOME ADDRESS** screen.

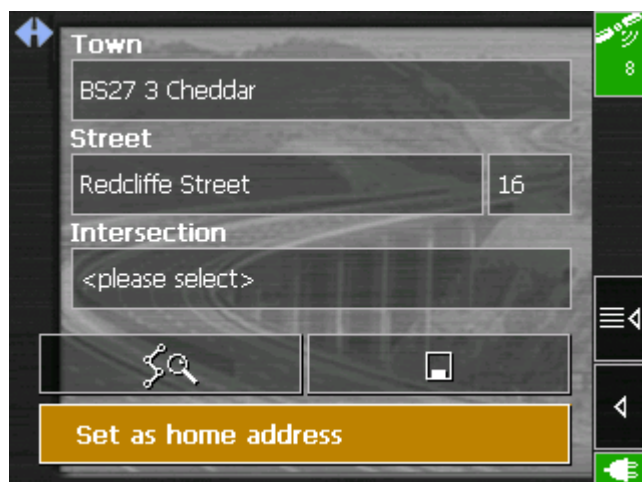


3. Tap **Enter your home address**.

The **DESTINATION** screen opens.



4. Tap the **Address** button and enter your home address as described in "Entering a destination manually", page 30.
5. Tap the **Set as home address** button.



The address is indicated on the **HOME ADDRESS** screen.



6. Tap **Save**.

3.2 User interface and basic functionality

Operation

In order to offer a maximum of flexibility and convenience for the operation of **MobileNavigator** there is three ways to make entries:

- ⇔ tapping with the stylus,
- ⇔ tapping with your finger, or
- ⇔ via the hardware keys of your Pocket PC.

3.2.1 Icons

Icons

The following buttons appear at the right of every **MobileNavigator** screen:



Return

Tap this icon to return to the previous screen. This icon is not available on the **MAIN SCREEN**.



Main screen

Tap this icon to open the main screen. This icon is not available on the **MAIN SCREEN**.

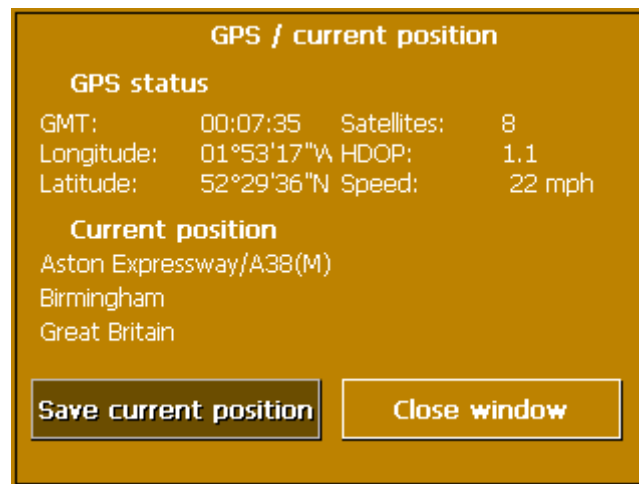


GPS

The colour of this icon and the number displayed on it have the following significance:

Colour/Number	Significance
red	A GPS receiver is not connected or the power supply is interrupted.
orange + number of received satellites	A GPS receiver is connected, but the received signals are not convenient for navigation purposes (e.g. because you are in a closed building).
green + number of received satellites	The signals are convenient. Navigation may begin.

Tap the **GPS** icon to display the current GPS status:



Entry	Significance
GMT	Greenwich Mean Time Time of London ignoring daylight saving time.
Longitude / Latitude	Current position: Indication of east longitude and north latitude.
Satellites	Number of received satellites. At least three satellites must be received for navigation purposes.
HDOP	Horizontal Dilution of Precision: Indicates the quality of position determination. Theoretically any value from 0 to 50 may occur. The smaller the value, the more accurate is the position determination (value 0 = no deviation from the real position). Values up to 8 are convenient for navigation purposes.
Speed	Indicates your current speed.

Entry	Significance
Position	Indicates the address of your current position.
Save	Tap this button to add the current address to the saved destinations list.
Quit	Tap this button to quit the GPS screen.

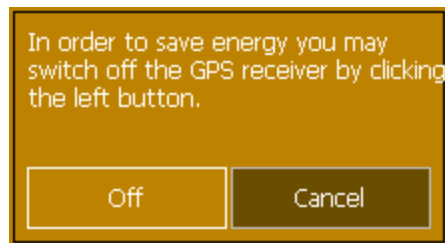


Switching the GPS-receiver on / off

The GPS-receiver consumes energy. This is of significance when the system is operated in battery mode, e.g. when you are on your way on foot or by bike. Switch therefore the GPS-receiver off when you don't need it for a certain time.

1. Tap the **Energy** icon  on the lower right corner of any screen.

The **ENERGY** screen opens:



2. Tap the **Off** button to switch the GPS receiver off.
3. When the GPS-symbol in the upper right corner becomes red, tap the **Cancel** button.



Notice: Switching the GPS-receiver on works the same way.

3.2.2 Hardware keys

Hardware keys

On the upper right corner of your device, there are the following hardware keys which allow to accede quickly the most important functions:



On / Off

Turns the device on / off.



Configuration

Opens the **CONFIGURATION** screen.



Back

Opens the precedent screen.



Destination

Opens the **DESTINATION** screen.



Zoom out

Works only in map view mode.



Zoom in

Works only in map view mode.

3.3 Indicating destinations

Basic principle of navigation

The indication of destinations is the basis of navigation respectively of itinerary planning. In this chapter, you will learn about the possibilities to indicate and manage destinations in **MobileNavigator**.

For details on destination management, please refer to "Navigation and Itinerary planning", page 53.

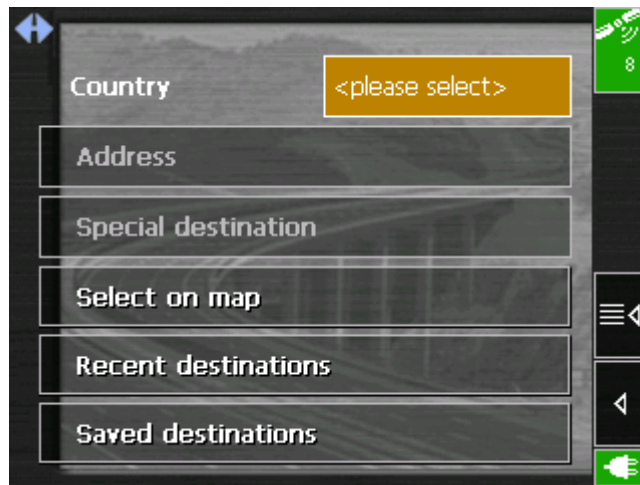
Indicating a destination

In **MobileNavigator** there are several possibilities to enter or to select destinations:

- ⇔ Via a manual address entry, see page 30.
- ⇔ Via the Special destinations function, see page 32.
- ⇔ By indication on the map, see page 36.
- ⇔ By selection from the Saved destinations list, see page 38.
- ⇔ By selection from the Recent destinations list, see page 39.
- ⇔ Via the Home icon, see page 42.

Destination screen

If you want to plan an itinerary or to navigate to a certain destination, you have to indicate destinations. The **DESTINATION** screen is the starting point for the indication or selection of a destination:



3.3.1 Entering a destination manually

Database of places

The data of all places covered by the currently loaded map is stored in the database of places.

You need not enter the complete names of towns and streets as **MobileNavigator** lists automatically all names that match with your entry.

If you enter for example "bab" into the **Town** entry field you will obtain a list of all towns beginning or having into their names "bab" or "bab".

You may then select the correct entry or enter more letters to shorten the results list.



Entries

All entries may be done with the finger on the software keyboard.

You need not enter special characters when entering a destination's city or street name. **MobileNavigator** replaces these characters automatically. When you are looking for, e.g., a town called "Würzburg", simply type "wurzburg".

Switching between character and number entry

Tap the

123

icon to enter numbers, e.g. for a postcode.

Tap the

abc

icon to return to the character entry mode.

Enter a space character, delete a single character

Tap the key

—

to insert a space character.

Tap the key

C

to delete the character to the left of the insertion mark.

Special characters

When you tap a key, a line above the software keyboard appears which lists all characters that may be entered by this key. The active character is highlighted.



If you want to type "ö", tap the "mno" key repeatedly until "ö" is highlighted in the line above the software keyboard.

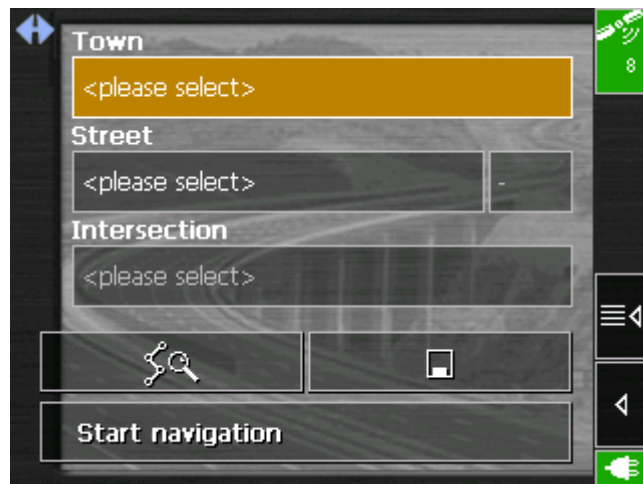
Indicating a destination...

1. On the main screen tap **One destination**.

The **DESTINATION** screen opens.

2. Tap the **Country** entry field and select the destination country.
3. Tap the **Address** entry field.

The **ADDRESS** screen opens:



4. Enter the destination town into the **Town** entry field. Enter either its name or its postcode.
5. Enter the destination street into the **Street** entry field. Enter a house number into the field at the right hand side if possible.



Notice: If the house numbers of the respective street are stored in the database of places, you may tap the field besides the **Street** field. If no house numbers are stored, the respective field is deactivated. The software navigates to the respective street.

6. Enter the name of a crossroad into the **Intersection** entry field if you want to define an intersection as destination point (e.g. because the house number is not available).
7. Tap the **Save** button if you want to navigate more often to the entered destination. You may then quickly select it from the **Saved destinations** list.

3.3.2 Selecting a special destination

Special destinations

Special destinations, also known as POIs (**P**oints of **I**nterest), are stored in the database of places and may be displayed on the map. Ports, airports, restaurants, hotels, petrol stations, public buildings, and others belong to the special destinations.

Indicate a special destination by selecting one

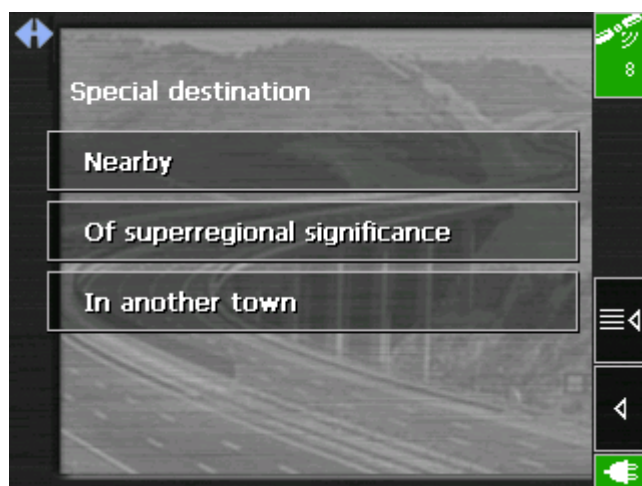
- ⇔ on the map, see "Indicating destinations on the map", page 36,
- ⇔ nearby,
- ⇔ of supraregional interest, or
- ⇔ in another town.

Selecting a special destination...

1. On the **DESTINATION** screen, tap the **Special destination** button.



The **SPECIAL DESTINATIONS** screen opens:



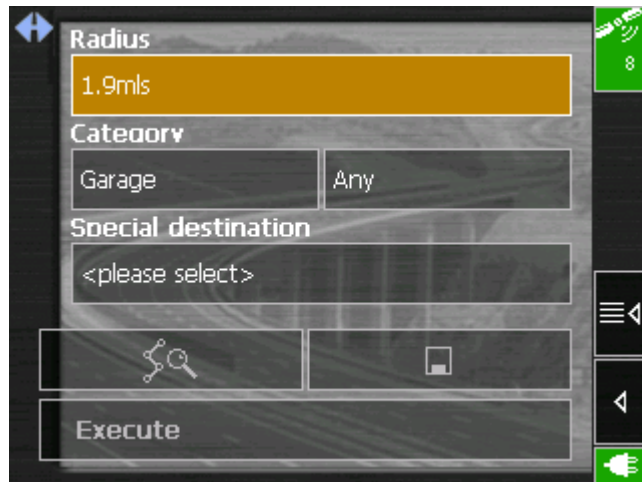
Special destinations nearby



Notice: You may only display special destinations nearby when the GPS receiver is turned on and when the GPS signal strength is sufficient.

Selecting a special destination nearby...

- On the **SPECIAL DESTINATIONS** screen, tap the **Nearby** button.
The **SPECIAL DESTINATIONS NEARBY** screen opens:



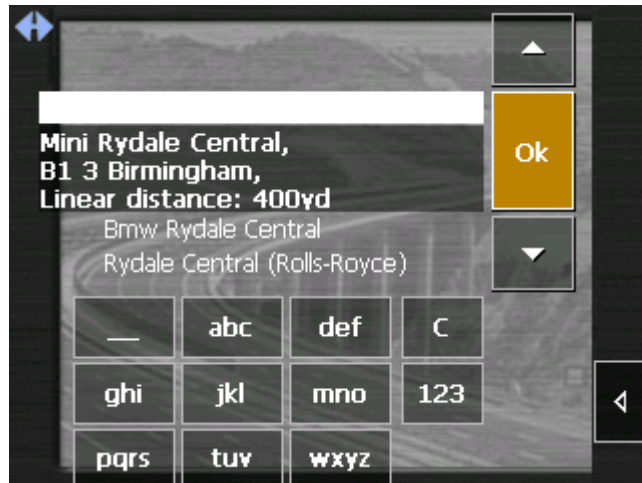
- Enter the radius around your current position within which you want to search for special destinations into the **Radius** entry field.
- Select the main category of special destinations to search for from the left one of the two **Category** list fields, e.g. "Garages". Only special destinations situated within the indicated radius will be displayed.
- Select the sub-category of special destinations to search for into the right one of the two **Category** list fields, e.g. "BMW", "Ford", "Volkswagen".



Notice: If you leave the **Sub-category** field empty, all special destinations matching with the selected main category will be listed in the **Special destination** list field.

- Select the correct destination from the **Special destination** list field.

All special destinations matching your entries are listed, including their linear distance from your current position:



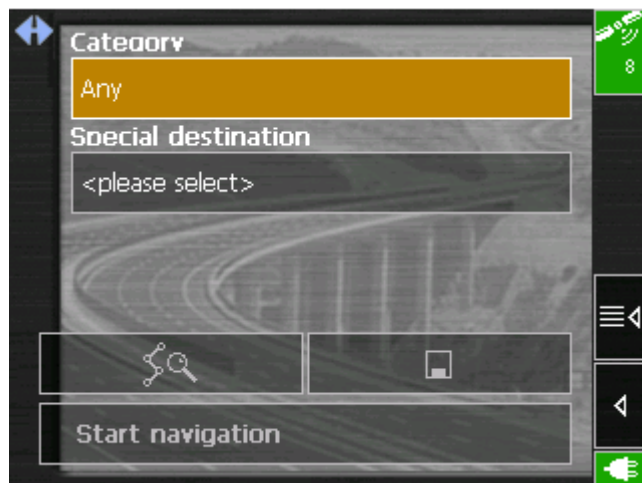
7. Tap the **Save** button if you want to navigate more often to the entered destination. You may then quickly select it from the **Saved destinations** list.

Special destinations of superregional significance

Selecting a special destination of superregional significance...

2. On the **SPECIAL DESTINATIONS** screen, tap the **Of superregional significance** button.

The **SPECIAL DESTINATIONS OF SUPERREGIONAL SIGNIFICANCE** screen opens:



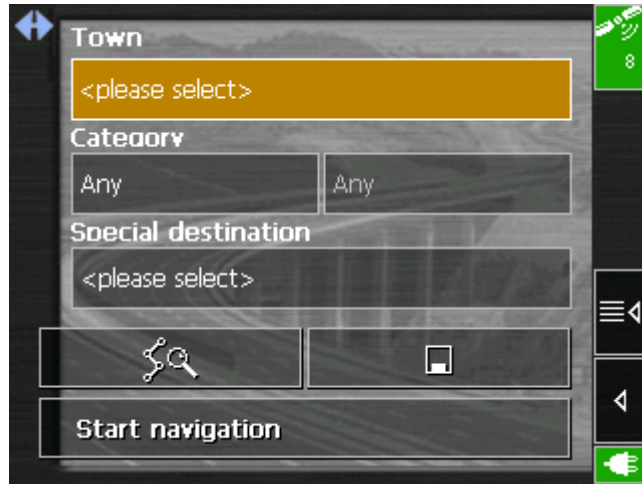
3. Select the main category of special destinations to search for from the **Category** list field, e.g. "Airports".
4. Select the correct destination from the **Special destination** list field.
5. Tap the **Save** button if you want to navigate more often to the entered destination. You may then quickly select it from the **Saved destinations** list.

Special destination in another town

Selecting a special destination in another town...

2. On the **SPECIAL DESTINATIONS** screen, tap the **In another town** button.

The **SPECIAL DESTINATIONS IN ANOTHER TOWN** screen opens:



3. Enter the name of the town in which you want to search for special destinations into the **Town** field.
4. Select the main category of special destinations to search for from the left one of the two **Category** list fields, e.g. "Nightlife". Only special destinations matching your Town and Category entries are listed.
5. Select the sub-category of special destinations to search for into the right one of the two **Category** list fields, e.g. "Bar", "Cinema", ...
6. Select the correct destination from the **Special destination** list field.



Notice: If you leave the **Sub-category** field empty, all special destinations matching with the selected main category will be listed in the **Special destination** list field. If you leave both the **Category** and the **Sub-category** fields empty, all special destinations situated in the selected town will be listed in the **Special destination** list field.

7. Tap the **Save** button if you want to navigate more often to the entered destination. You may then quickly select it from the **Saved destinations** list.

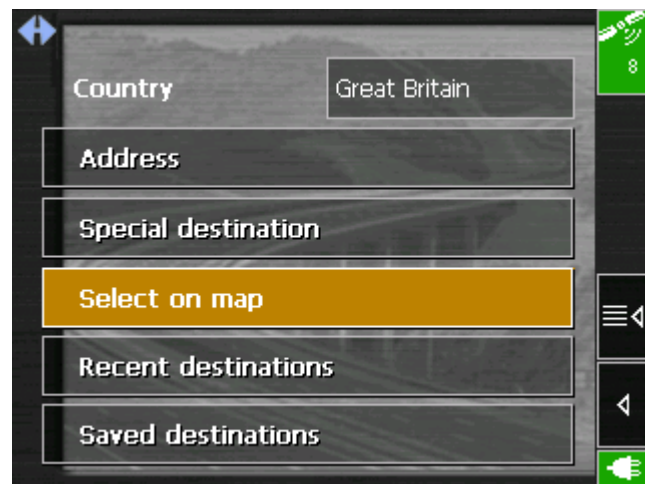
3.3.3 Indicating destinations on the map

You may indicate a destination directly on the map. In addition to towns and streets, you may also select special destinations quickly..

Indicating a destination on the map...

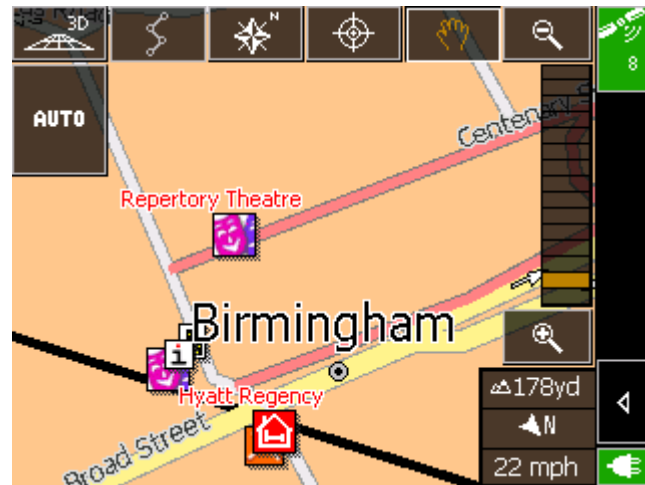
1. On the main screen tap **One destination**.

The **DESTINATION** screen opens.



2. Tap the **Indicate on map** button.

The **MAP** screen opens:

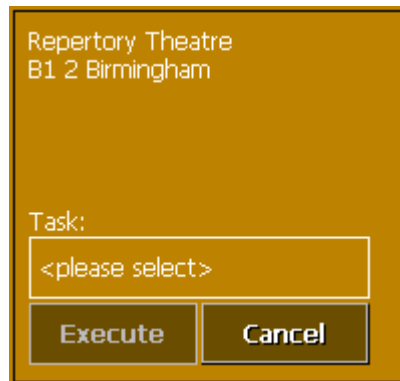


3. Tap on the place you want to determine as destination and hold.

A circle of orange points appears round the selected place:

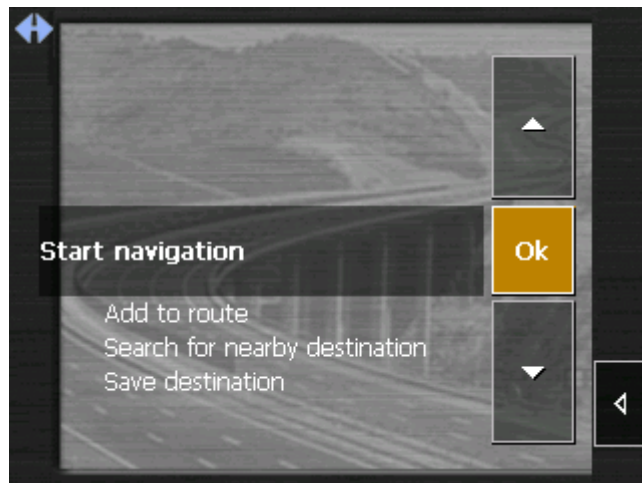


Database information on the respective place will be loaded and displayed:



4. Tap the **Task** field.

The **TASK** screen opens where you may indicate how to proceed:



5. Select **Start navigation** from the list to navigate to the respective place.
Tap the **Save** button if you want to navigate more often to the entered destination. You may then quickly select it from the **Saved destinations** list.

The **TASK** screen closes and the task is indicated on a new screen.



6. Tap the **Execute** button.

3.3.4 Saved destinations

Saved destinations

All destinations you have saved by tapping the **Save** button are listed on the **SAVED DESTINATIONS** screen. . On this screen you may:

- ⇔ select destinations for navigation purposes,
- ⇔ rename destinations, and
- ⇔ delete destinations from the list.

1. On the **DESTINATION** screen tap **Saved destinations**.



The **SAVED DESTINATIONS** screen opens.



Take over



2. Tap the entry of the respective destination.

Notice: The list may be scrolled via the “up” and “down” icons. You may as well enter the first letter of the respective destination. The list will then automatically scroll to the first destination matching your entry.

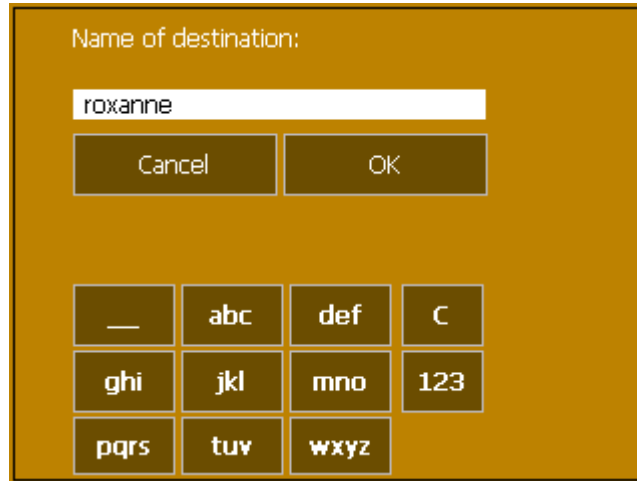
3. Tap **OK**.

The destination will be taken over. The address is entered into the respective fields.

Renaming a destination

1. Tap the **Saved destinations** button.
2. Tap the entry of the destination to be renamed.
3. Tap the **Rename** icon.

The **SAVE AS...** dialog box opens.



4. Enter the new name.
 5. Tap **OK**.
- The destination is now renamed.

Deleting a destination

1. Tap the **Saved destinations** button.
2. Tap the entry of the destination to be deleted.
3. Tap the **Delete** icon.

The destination is now deleted.

3.3.5 Recent destinations

Recent destinations

All destinations you have navigated to recently are listed on the **RECENT DESTINATIONS** screen. On this screen you may:

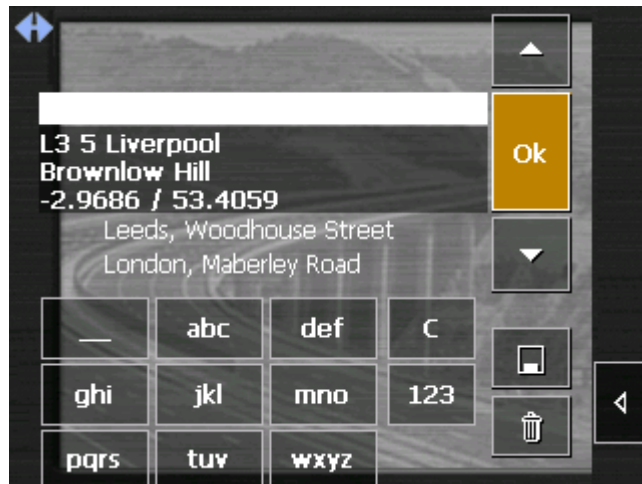
- ⇔ select destinations for navigation purposes,
- ⇔ Add destinations to the **SAVED DESTINATIONS** list, and
- ⇔ delete destinations from the list.

Taking over

1. On the **DESTINATION** screen tap the **Recent destinations** button.



The **RECENT DESTINATIONS** screen opens.



2. Tap the entry of the desired destination.



Notice: The list may be scrolled via the "up" and "down" icons. You may as well enter the first letter of the town of the desired destination. The list will then automatically scroll to the first destination matching your entry.

3. Tap **OK**.

The destination will be taken over. The address is entered into the respective fields.

Renaming a destination

1. Tap the **Recent destinations** button.
2. Tap the entry of the destination you want to save.
3. Tap the **Save** icon.

The **NAME OF THE DESTINATION** dialog box opens.

Name of destination:

roxanne

Cancel OK

—	abc	def	C
ghi	jkl	mno	123
pqrs	tuv	wxyz	

4. Enter a name for the destination.
5. Tap **OK**.

The destination is now saved and will appear on the **SAVED DESTINATIONS** list.

Deleting a destination

1. Tap the **Recent destinations** button.
2. Tap the entry of the destination to be deleted.
3. Tap the **Delete** icon.

The destination is now deleted.

3.3.6 Save and use your home address

Survey

You may store your home address in **MobileNavigator** in order to quickly start navigation home at any place.

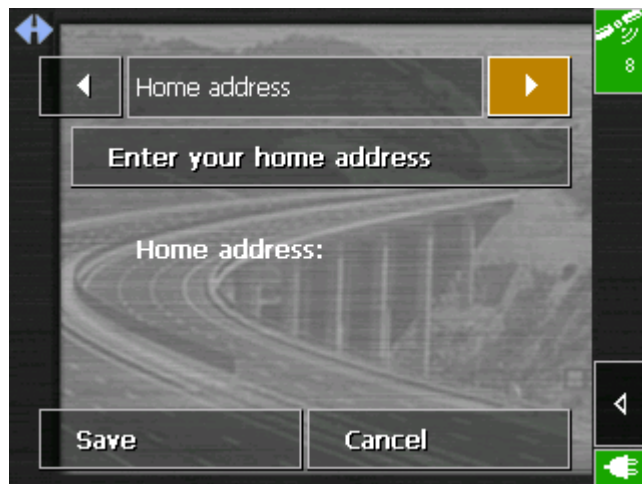
Saving your home address...

1. On the Main screen, tap the **Settings** button



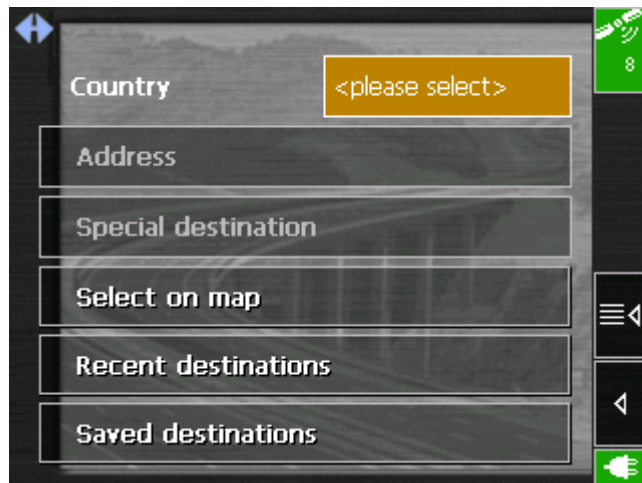
The **SETTINGS** screen opens.

2. Via the "Left" and "Right" icons, select **Home address**.



3. Tap the **Enter your home address** button.

The **DESTINATION** screen opens.

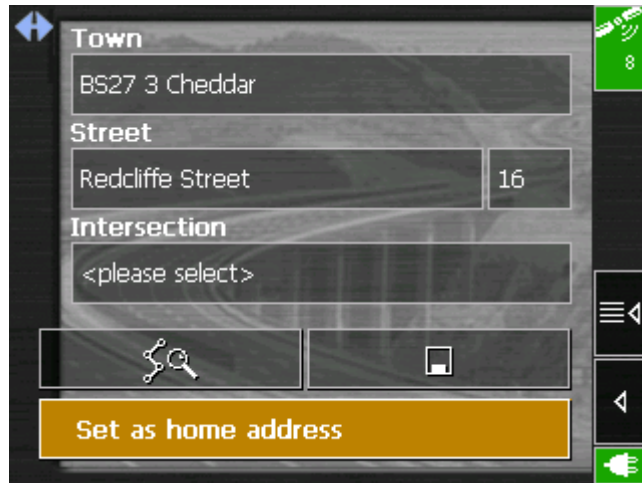


4. Tap the **Address** button



and enter your address as described in "Entering a destination manually", page 30.

5. Tap the **Set as home address** button.



The address is taken over to the **HOME ADDRESS** screen.



6. Tap the **Save** button.

Using your home address for navigation...

1. On the main screen, tap



The route is now being calculated and navigation starts. The route options you have chosen for the last navigation are applied.

3.4 Working with the map

Survey

There are various pieces of information available on the **MAP** screen. Learn in this chapter about the possibilities for working with the map, which depend on whether you are in navigation mode, or not.

Displaying the map

On the main screen, tap the **Show map** button to open the **MAP** screen.

Using the delivered maps

There are two CDs (CD-ROM2 und CD-ROM3) with additional maps included in the delivery. If you wish to use one of those maps on your navigation system, transfer the desired map from the respective CD to a memory card using a memory reader. Proceed then as described in "*Selecting a map*" (see below).

Selecting a map

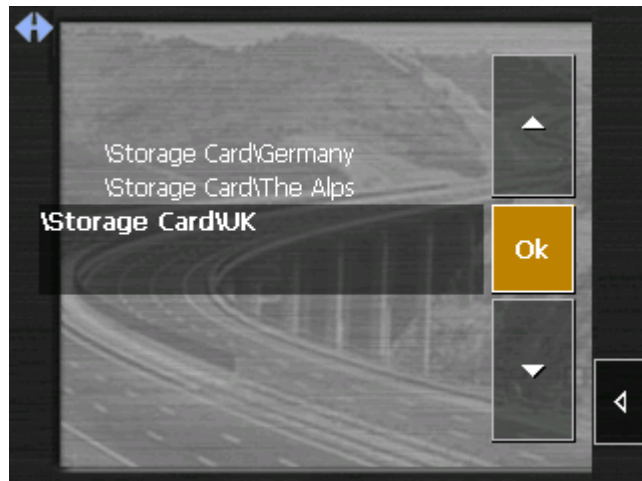
To load another map which is available on the currently inserted memory card, proceed as follows:



Notice: If the desired map is on another memory card, remove the card, which is currently inserted. **MobileNavigator** turns off. Insert the card with the desired map. **MobileNavigator** turns on again. Even if there is only one single map on the memory card, you have to select it manually as described below.

1. On the main screen, tap the **Choose map** button.

The **Available maps** screen opens:



2. Tap the entry of the map you want to work with.
3. Tap **OK**.

The selected map is now loaded. The main screen opens.

3.4.1 Operating the map

Displaying the map

You may display the map

- ⇔ while planning an itinerary,
- ⇔ in order to show destinations on the map, or
- ⇔ in order to select destinations on the map.

You may display the map via the **Show map** button on the main screen or via the **Show on map** and **Select on map** buttons which are available when you indicate a destination.



On the **DESTINATION** screen you may tap the **SELECT ON MAP** button to display the map.

The map is being displayed automatically when you are navigating.



Tapping the map

The icons appear when you tap the map.

If you tap a place on the map and hold information on this place will be displayed and you may, e.g., take over the data for navigation purposes. For details, please refer to "Indicating destinations on the map", page 36.

Icons

The following icons are displayed on the map:

Zoom / Scroll

Tap the **Zoom/Scroll** icon



to switch between Zoom and Scroll mode.



Zoom

In Zoom mode (the icon appears white) you may scale the map up or down. Zoom in by drawing a rectangle on the map, beginning with the upper left corner. Zoom out by beginning with the lower right corner.



Scrolling

In Scroll mode (the icon appears red) you may scroll the map. Tap on the screen and drag to the desired direction.



Itinerary planning

This icon is active when a calculated itinerary is loaded. Tap the **Itinerary** icon to display the whole itinerary. Tapping this icon again will display the precedent representation of the map.



North orientation

Tap the **Orientation** icon to north orientate the map. (the icon appears red). Tapping this icon again will orientate the map in driving direction (the icon appears white).



Centre (GPS reception necessary)

Tap the **Centre** icon to centre your current position on the map.



3D view (GPS reception necessary)

Tap the **3D** icon to display the map in 3D mode (bee flight view). The icon becomes the 2D icon. Tap the **2D** icon to return to the 2D mode (standard). The icon becomes the 3D icon.



Zoom in

Tap **Zoom in** to scale the map down.

Zoom bar

Zoom bar

Drag the control to the left or to the right in order to modify the scale of the map.



Zoom out

Tap **Zoom out** to scale the map up.



Auto mode (GPS reception necessary)

Tap the **Auto** icon to display the standard representation of the map after you have modified the view. The settings of 3D view, north orientation and autozoom mode will be applied. Your current position will be centred. The icons will not be displayed.



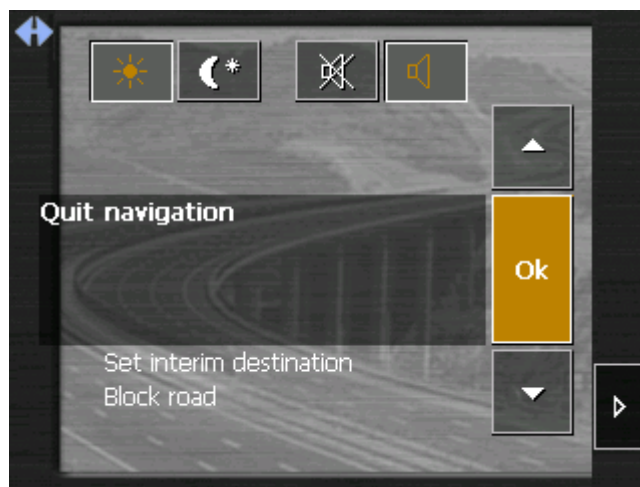
For details please refer to "Auto mode", page 68.



Additional functions

Tap the **Additional functions** icon to display the **ADDITIONAL FUNCTIONS** screen. The availability of some functions depends on whether you are being in navigation mode or not.

The **ADDITIONAL FUNCTIONS** screen opens:



Tap the **Day** icon to adapt the brightness of the screen to daylight conditions.



Tap the **Night** icon to adapt the brightness of the screen to night conditions.



Tap these icons to start / stop guidance by speech.

Show route list

This feature is only available in navigation mode or when a calculated itinerary is loaded. Tap **Show route list** to display a list of all important waypoints of the route. For details, please refer to "Displaying the route list", page 61.

Change preferences

Tap **Change preferences** to display the **SETTINGS** screen. For details, please refer to "Configuration of MobileNavigator", page 66.

Quit navigation

This function is only available in navigation mode. Tap **Quit navigation** to exit navigation mode.

Block, Unblock, New block

These functions are only available in navigation mode.



For details, please refer to "Blocking a route section", page 63.

Set interim destination

This function is only available in navigation mode. Tap **Set interim destination** to add a new route point to your itinerary. The route will be recalculated and the newly added route point will be the first destination to navigate to. Navigation to the other route points will be executed later.



For details, please refer to "Adding a stage point during navigation", page 62.

Change route options

This function is only available in navigation mode. Tap **Change route options** to modify them.



For details, please refer to "Navigating to a destination", page 55.

3.4.2 Representation of the map in navigation mode

In navigation mode, there is some assistance for navigation, some information on the itinerary and one more command button being displayed:

Assistance for navigation

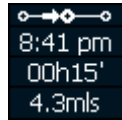
The following assistance for navigation is being displayed at the left and at the bottom of the map:




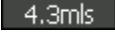


Field	Information
①	If there is two manoeuvres to be executed quickly one after the other, the small upper arrow field indicates the next manoeuvre but one to be executed.
②	The red arrow indicates your current position on the map. Since the displayed sector of the map changes continually your current position is centred on the map whenever possible (Moving Map).
③	The bigger arrow field indicates the next manoeuvre to be executed.
④	The distance field indicates the distance to the next manoeuvre. When you approach, the representations changes into a distance bar: <div style="text-align: center;"> </div> The more yellow bars are displayed the nearer you are to the place where the next manoeuvre must be executed.
⑤	The upper street field indicates the name of the next street to turn in.
⑥	The lower street field indicates the name of the street you are currently in.

Information on the itinerary

At the right of the map, the following information on the itinerary is being displayed:



Field	Information
	This symbol means "stage". All information displayed below refers to the next stage point.
	ETA (Estimated time of arrival).
	Remaining time to arrival (estimated).
	Remaining distance to arrival (estimated).



Tap this icon to repeat the last spoken instruction. All available information will be displayed.

The additional information will disappear after some seconds.

3.4.3 Displaying additional information on the map

In **MobileNavigator** you may determine which information is to be displayed on the map. Modifying any configuration begins on the **SETTINGS** screen.

Configuring the display of additional information...

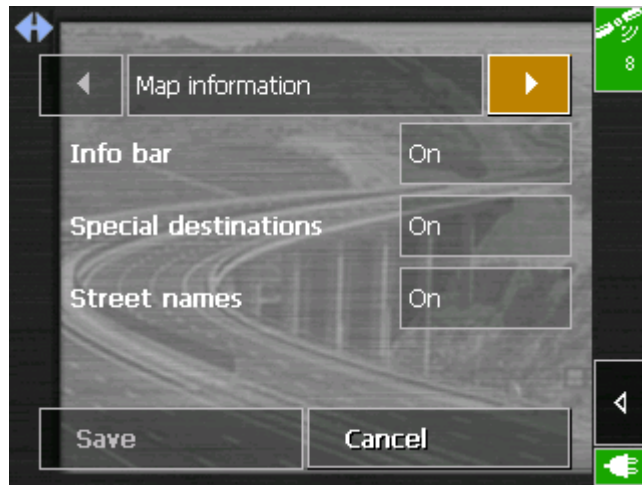
1. On the main screen, tap **Settings** or tap the



icon on the map and select **Settings**.

The **SETTINGS** screen opens.

2. Select **Map information** using the arrow buttons:



Info bar

3. The **Info bar** at the bottom of the map displays the compass, the current height above sea level, and the current speed. Tap the respective command button to display (Yes) or not (No) the **Info bar**.

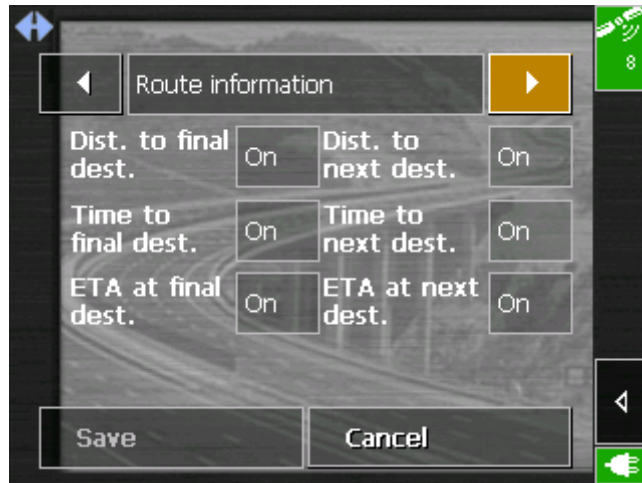


Special destinations

4. Tap the respective command button to display (Yes) or not (No) **Special destinations** on the map.

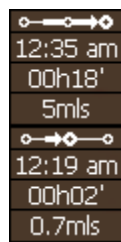
Street names



5. Tap the respective command button to display (Yes) or not (No) **Street names** on the map.
6. Via the arrow buttons select **Route information**:



7. Tap the command buttons to display (Yes) or not (No) the respective information on the map.

The desired information on the entire itinerary (upper section) and on the current stage (lower sector) will be displayed at the right hand side of the map.



Section	Information
	This symbol means "itinerary". All information displayed below refers to the complete route.
	This symbol means "stage". All information displayed below refers to the next stage point. The "stage" section is not displayed when only one single destination has been indicated.
Line 2	ETA (Estimated time of arrival).
Line 3	Remaining time to arrival (estimated).
Line 4	Remaining distance to arrival (estimated).

8. Tap **Save** to save the modifications.

The modifications will be taken over and displayed on the map.

4 Navigation and Itinerary planning

Topics covered in this chapter:

4.1	General notes on navigation	page 54
4.2	Navigating to a destination	page 55
4.3	Navigating to several destinations (Itinerary planning) Working on itineraries, storage and management	page 57
4.4	Functions which are useful for navigation Displaying the route list Adding a stage point during navigation Blocking a route section	page 61

4.1 General notes on navigation

The use of **MobileNavigator** may only be effected at your own risk.



Attention: To protect yourself and others from accidents please do not operate the navigation system while driving!



Attention: You must not look at the display except when it is absolutely safe to do so!



Attention: The road layout and the traffic signs are absolutely prior to the instructions of the navigation system.



Attention: You must not follow the instructions of **MobileNavigator** except when the circumstances and the road traffic regulations allow doing so. **MobileNavigator** will guide you to your destination even when you have left your planned itinerary.

Obstructed GPS reception

When you turn off the GPS receiver or when the reception of GPS-signals is obstructed **MobileNavigator** does not close but navigation is interrupted.

As soon as the GPS receiver works again the navigation system notices a possible change of your current position and recalculates the route. You may simply continue navigation.



Notice: Navigation will always continue automatically when you switch off your hardware without closing **MobileNavigator** before.

Quitting navigation mode

When you quit navigation mode by command the main screen appears. You may then indicate another destination or reassume the by selecting the former destination from the **Recent destinations** list.

Arriving at your destination

When you have reached your destination the system pronounces the message "You have reached your destination!"

The map is no more presented in navigation mode. A small red arrow indicates your current position.

4.2 Navigating to a destination

Navigating to a destination...

1. Enter your destination as described in "Indicating destinations", page 29.
2. Tap the **Start navigation** button.

The **ROUTE OPTIONS** screen opens:



3. Tap the **TYPE OF ROUTING** field and select one of the following options:

Option	Signification
Fast route	The quickest route will be calculated.
Short route	The shortest route will be calculated.
Pedestrian route	A route for pedestrians will be calculated. One-way directives and prohibitions of vehicular traffic will be disregarded.
Bike route	A route for bikes will be calculated. All traffic rules concerning cars will be regarded, but some kinds of roads as e.g. motorways will be excluded from the itinerary.

4. Tap the **Motorways**, **Ferries**, and **Toll road** fields successively and select one of the following options:

Option	Signification
Permitted	The respective kind of street will be regarded for route calculation.
Avoid	The respective kind of street will be avoided if reasonable.
Forbidden	The respective kind of street will be disregarded for route calculation.



Notice: The Route options settings will be saved. You will no more need to enter them except if you want to navigate using modified options.

5. Tap **Start navigation**.

The route is now being calculated. The map is being displayed in navigation mode.

4.3 Navigating to several destinations (Itinerary planning)

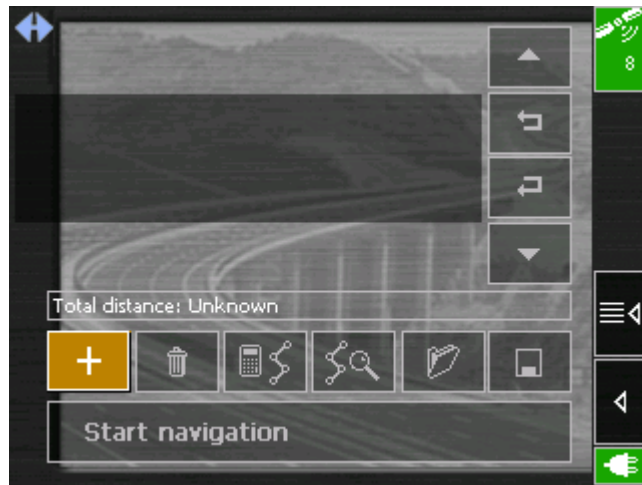
Itinerary planning

You may plan itineraries without receiving GPS-signals, e.g. comfortably at home. Planned itineraries may be stored. Thus you may plan as many itineraries as you want, e.g. for holidays.

Navigating to several destinations...

1. On the main screen, tap **Several destinations**.

The **ITINERARY** screen opens:



2. Tap the **Add destination** icon to indicate the first stage point.

The **Destination** screen opens.

3. Indicate the destination as described in "Indicating destinations", page 29.
4. Tap the **Add to itinerary** icon.

The **ITINERARY** screen opens. The destination is added as stage point 1.

5. Repeat steps 2-4 for every stage point you want to add to the itinerary.



6. Tap the entry of the stage point you want to navigate to first.



Notice: You have to select the stage point you want to navigate to first. You may then continue navigation when it was interrupted. You may as well navigate to only some of the stage points of a stored itinerary.

7. Tap **Start navigation**.

The route is now being calculated. The map is being displayed in navigation mode.

If you have planned an itinerary with several stages, navigation to the next stage point starts automatically when you have reached a stage point. For details, please refer to "Itinerary", page 69.

Continuing navigation after the arrival at a stage point...

4.3.1 Working on itineraries, storage and management

Survey

You may plan as much itineraries as you want, e.g. for holidays. You may save them and use them later for navigation purposes. At any moment, you may add stage points, modify the order of the stages, or display the itinerary on the map. The following commands are available:

One place up



Tap the **One place up** icon to navigate to the respective stage point earlier (example: stage 3 becomes stage 2).

One place down



Tap the **One place down** icon to navigate to the respective stage point later (example: stage 2 becomes stage 3).

Add stage



Tap the **Add destination** icon to add a stage point. The new stage point will be added at the end of the list. You may shift it forward using the **One place up** icon.

Delete stage



Tap the **Delete destination** icon to delete the respective stage point.

Calculate the route



Tap the **Calculate the route** icon to calculate the distance and the estimated duration of the entire itinerary. The information will be displayed after you have entered (or confirmed) the route options.

Total distance: 17mils Time: 00 h 27 min

Furthermore, the distance and the estimated duration of each stage will be indicated with the stage entries.

WV13 2 Willenhall
3 Walsall Road
3.3mils
00h 09'

Load an itinerary



Tap the **Load itinerary** icon to load a saved itinerary, e.g. to modify it or for navigation purposes. If you had already entered stage points, the stage points of the loaded itinerary will be inserted after the stage point which is currently selected.

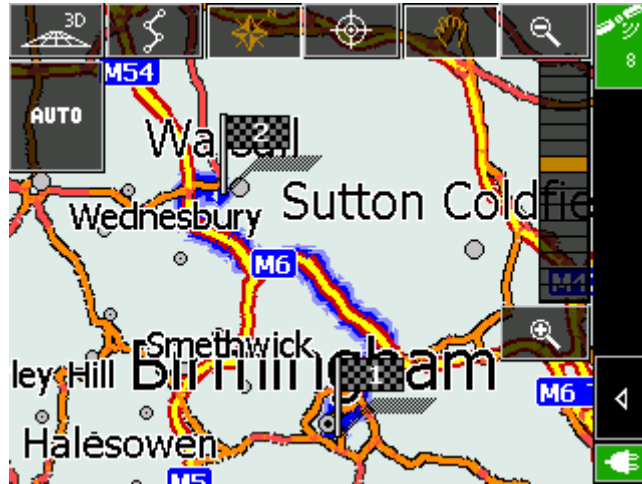
Save the itinerary



Tap the **Save itinerary** icon to save the itinerary. Enter an name for the itinerary into the **SAVE AS...** dialog box.



Tap **Show on map** to display the entire itinerary on the map. The route will be highlighted in blue:



4.3.2 Simulating the route

Simulation

You may execute a simulated navigation along the itinerary when the route has been calculated.



Notice: The reception of GPS-signals is not necessary for the simulation.

Simulating the route...

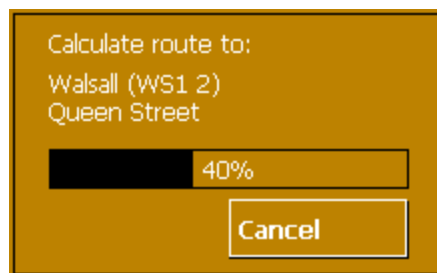
1. Tap the **Show on map** icon.



The itinerary is displayed on the map.

2. Tap the **Additional functions** icon.
3. Tap **Start simulation**.

The route will be recalculated for simulation purposes



and simulation starts when calculation is ready.

Stop simulation

1. To quit simulation tap the **Additional functions** icon.
2. Tap **Quit navigation**.

4.4 Functions which are useful for navigation

Survey

In **MobileNavigator** the following functions are available in navigation mode:

- ↔ Displaying the route list, see below.
- ↔ Adding a stage point during navigation, see page 61.
- ↔ Blocking route sections, see page 62.

4.4.1 Displaying the route list

Route sections

During navigation (or just after the calculation of the route) you may display the route list, which informs about the distance and duration from one way point to the next.

Displaying the route list...

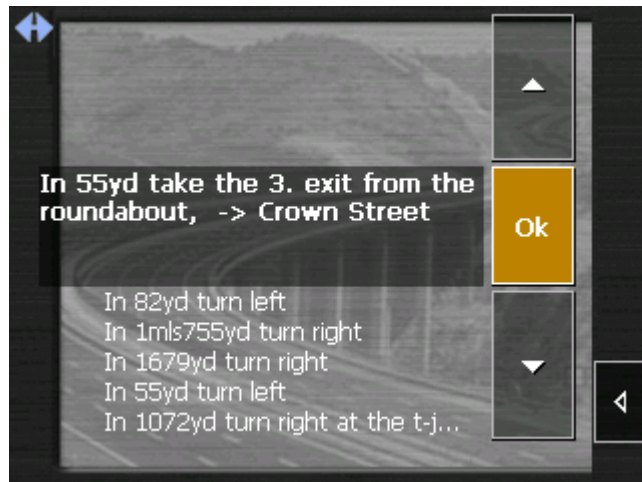
Precondition: The map is being displayed.

1. Tap the **Additional functions** icon



2. Tap **Show route list**.

The **ROUTE LIST** screen opens.



The route list informs about the distance to the next turn, the type of the next maneuver, the name of the street in which you are just before carrying out the described maneuver and the name of the street into which you should turn next.

4.4.2 Adding a stage point during navigation

Adding a stage point during navigation...

At any moment during navigation you may add a new stage point to your itinerary. The route will be recalculated in order to make the new stage point the next destination to navigate to. The other remaining stage points will be navigated to after the new one.

Adding a stage point...



Precondition: The map is being displayed in navigation mode.

1. Tap the **Additional functions** icon.
2. Tap **Set interim destination**.

The **DESTINATION** screen opens.

3. Indicate the new stage point as described in "Indicating destinations", page 29.
4. Tap the **Set as route point** button.

The route will be recalculated in order to make the new stage point the next destination to navigate to.



Notice: You may as well select the new stage point directly on the map, just as described in "Indicating destinations on the map", page 36. Tap the respective place and hold. From the context menu, select **Add to route**.

4.4.3 Blocking a route section

Blocking a route section manually

You may block a route section manually in order to evade it. Manual blocking forces a recalculation of the route.

Presume that you are driving on a motorway and a radio message announces a traffic jam of 4 miles near your current position. With the "Block route sections" function you may instruct the navigation system to evade the announced traffic jam.

A manual blocking is only valid for the current navigation process. The respective route section will be unblocked for the next navigation or when you restart the software.

Blocking a route section...



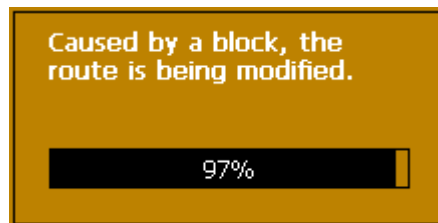
Precondition: The navigation system is in navigation mode and the map is being displayed.

1. Tap the **Additional functions** icon.
2. Tap **Block road**.

The **BLOCKING** screen opens.

3. Enter how many miles (from your current position on) you want to block.
4. Tap **OK**.

This forces a recalculation of the route. The indicated route section will be evaded. On the map, it will be highlighted on red.



Unblocking a route section

1. Tap the **Additional functions** icon.



2. Tap **Unblock**.

The route section is now unblocked. The navigation system uses the route, which had been calculated originally.

5 Appendix

Topics covered in this chapter:

5.1 Configuration of MobileNavigator	page 66
Map information	
Route information	
Volume	
Representation	
Touch screen calibration	
Auto mode	
Speed profile	
Itinerary	
Time zone	
Format	
Home address	
Radio-Mute	

5.1 Configuration of MobileNavigator

Configuration

In **MobileNavigator**, you may modify the following settings:

- ⇔ Map information, see below.
- ⇔ Route information, see page 67.
- ⇔ Volume, see page 67.
- ⇔ Representation, see page 68, see page 69.
- ⇔ Touch screen calibration, see page 68
- ⇔ Auto mode, see page 68.
- ⇔ Speed profile, see page 69.
- ⇔ Itinerary, see page 69.
- ⇔ Time zone, see page 69.
- ⇔ Itinerary, see page 69.
- ⇔ Format, see page 69.
- ⇔ Home address, see page 70.
- ⇔ Radio-Mute, see page 70


On the main screen, tap the **Settings** button to configure **MobileNavigator**.

On the **SETTINGS** screen, tap the **Save** button to apply your modifications if you have made some.

5.1.1 Map information

Info on the map


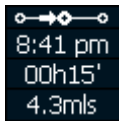
On the **INFO ON THE MAP** screen, you may effect the following modifications:

Element	Signification
Info bar	<p>The Info bar at the bottom of the map displays the the compass, the current height above sea level, and the current speed.</p> <p>Tap the respective command button to display (Yes) or not (No) the Info bar.</p> 
Special destinations	<p>Tap the respective command button to display (Yes) or not (No) Special destinations on the map.</p>
Street names	<p>Tap the respective command button to display (Yes) or not (No) Street names on the map.</p>

5.1.2 Route information

Route information

On the **ROUTE INFORMATION** screen, you may effect the following modifications:

Element	Signification
Dist. to final dest.	Remaining distance to the final destination (estimated)
Time to final dest.	Remaining time to the final destination (estimated).
ETA at final dest.	ETA (Estimated time of arrival) at the final destination. Tap the respective command buttons to display (Yes) or not (No) the respective information on the map. All information displayed below refers to the final destination. This section is only available if you have indicated more than one destination to navigate to. 
Dist. to next dest.	Remaining distance to the next stage point (estimated).
Time to next dest.	Remaining time to the next stage point (estimated).
ETA at next dest.	ETA (Estimated time of arrival) at the next stage point. Tap the respective command buttons to display (Yes) or not (No) the respective information on the map. All information displayed below refers to the next stage point. 

5.1.3 Volume

Volume

On the **VOLUME** screen, modify the volume of the spoken indications of the navigation system.

Tap the **Volume** field and select another value.

5.1.4 Representation

Representation

On the **REPRESENTATION** screen, you may effect the following modifications:

Element	Signification
Skin	Skins are made to personalise the user interface of MobileNavigator . Tap the Skin field. Select one of the available skins and tap OK .
Brightness day	Tap this entry field and select a brightness degree (1 to 8) to adapt the brightness of the screen to daylight conditions.
Brightness night	Tap this entry field and select a brightness degree (1 to 8) to adapt the brightness of the screen to night conditions.

5.1.5 Touch screen calibration

Touchscreen calibration

If you think that the touch screen does not perceive contact positions correctly, **MobileNavigator** may calibrate it.

Tap the **Start calibration** button and follow the instructions on the display.

5.1.6 Auto mode

Auto mode

On the **AUTO MODE** screen, you may effect the following modifications:

Element	Signification
Autozoom	Autozoom increases or reduces the scale of the map, depending on your current speed. Tap the Autozoom field. Select No autozoom if you don't want the scale to be modified in navigation mode. Standard autozoom if you want the scale to be modified continuously in navigation mode. Low autozoom if you want to increase the scale quicker than with normal autozoom. High autozoom if you want to reduce the scale quicker than with normal autozoom. Make your choice and tap OK .
Map	Tap this button to orientate the map by default to the north (Yes) or in driving direction (No).

5.1.7 Speed profile

Speed profile

On the **SPEED PROFILE** screen, indicate your speed profile. This entry will have an effect on the calculation of the remaining time and of the **estimated time of arrival (ETA)**.

Tap the **Speed profile** button. Select one of the available profiles and tap **OK**.

5.1.8 Itinerary

Proceeding automatically to the next stage point...

On the **ITINERARY** screen, determine whether you want to navigate automatically to the next stage point after having reached a stage point (Yes) or not (No).

Tap the **Proceed automatically to next destination** button to toggle between Yes and No.

If you do not proceed automatically, you may proceed as follows: On the map in navigation mode, tap the **Additional functions**



icon.

Select **Next route point** and tap **OK**.

5.1.9 Time zone

Calculation of arrival times

On the **TIME ZONE** screen, select the time zone of the region you are currently staying in. This is necessary for the system to indicate correct times of arrival in navigation mode.

Element	Signification
Time zone	Tap this entry field to select the time zone of the region you are currently staying in.
Daylight saving time	Tap this entry field to switch between daylight saving time (yes) and standard time (no).

5.1.10 Format

Units

On the **FORMAT** screen, determine which units are to be used for time and distance indications.

Element	Signification
Time	Tap the Time field to toggle between 12 hours (AM/PM) and 24 hours time format.
Distance	Tap the Distance field to toggle between kilometres or miles distance units.

5.1.11 Home address

Home address

On the **HOME ADDRESS** screen, you may save your home address to quickly start navigation homewards from anywhere.

1. Tap **Enter your home address**.

The **DESTINATION** screen opens.

2. Tap the **Address** button and enter your home address as described in "Entering a destination manually", page 30.
3. Tap the **Set as home address** button.

The address is indicated on the **HOME ADDRESS** screen.

5.1.12 Radio-Mute

Radio-Mute

On the **RADIO-MUTE** screen, you may activate the radio-mute function if your hands-free kit is connected to the RADIO-MUTE jack of your car radio. Possible retardations of the hands-free kit will then have no negative effects on the spoken indications of the navigation system.

6 Glossary

<i>COM-port</i>	A COM port is a connector to a communications interface, usually the serial port. The ports are numbered by a number behind "COM". A communications interface is designed to connect hardware like a mouse or a GPS receiver.
<i>GMT</i>	GMT (G reenwich M ean T ime) is the mean solar time at the Royal Greenwich Observatory in Greenwich near London, England, which by convention is at 0 degrees geographic longitude. Theoretically, noon Greenwich Mean Time is the moment when the Sun crosses the Greenwich meridian (and reaches its highest point in the sky in Greenwich). Up to 1972, GMT was the global time standard. Because of the Earth's uneven speed in its elliptic orbit, GMT has been replaced by UTC (U niversal T ime C oordinated) which is an ultra stable time standard based on atomic clocks.
<i>GPS</i>	<p>The GPS (Global Positioning System) is based on 24 satellites, which are in orbit round the earth. They are permanently emitting the time and their current position. The GPS receiver receives this information and calculates the longitude and the latitude of its own current position.</p> <p>The signals of at least three satellites are needed to determine the longitude and the latitude. With the signals of at least four satellites the elevation may be calculated, too. The determination has an accuracy of about 3 yards.</p>
<i>HDOP</i>	The H orizontal D ilution o f P recision (HDOP) indicates the quality of position determination. Theoretically any value from 0 to 50 is possible. The smaller the value is, the more accurate is the position determination (value 0 = no deviation from the actual position). Values up to 8 are convenient for street navigation.
<i>POI</i>	P oint o f I nterest (POI). See →Special destination.
<i>Special destination</i>	Special destinations, also called POI (P oints o f I nterest), are covered by the map and may be displayed on it. Harbours, airports, restaurants, hotels, petrol stations, public buildings, and others belong to the special destinations. You may determine special destinations as itinerary points for navigation purposes.

7 Index

A

Activation code	12
Additional functions	47
Assistance for navigation.....	49
Autozoom	68

B

Bike route	55
Blocking.....	63

C

Current position	49
------------------------	----

D

Database of places	30
Destination	
Delete.....	39, 41
Navigate to.....	55
Rename	39
Save.....	41

E

ETA (Estimated Time of Arrival).....	67
--------------------------------------	----

G

GMT	26
GPS	10
GPS icon	26
Signals.....	10
GPS receiver.....	54
GPS-receiver	
On/Off	27

H

Hardware keys.....	27
HDOP	26
Home address	22, 42, 70

I

Indication of destinations	
Home address	43
Manually	30
On the map	36
Recent destinations.....	39
Saved destinations.....	38
Special destination.....	32
Info bar	51, 66
Information	
Itinerary.....	52
Stage.....	50, 52
Itinerary	52, 69
Itinerary planning.....	57

M

Main screen	20
Map	
3D view.....	46
Active	44
Auto mode.....	47
Centre	46
Display.....	21, 45
Info bar.....	51
Information	51
Itinerary.....	46
Orientation	46
Scroll	46
Special destinations	51, 66
Street names	51, 66
Zoom.....	46
Zoom in	46
Zoom out	46
MobileNavigator	
Quit.....	21

N

Navigation	
Begin	55
Next stage.....	69
Proceed automatically	69
Quit.....	48
Navigation software	
Start.....	20
Next stage.....	69

<hr/>	
O	
Orientation	68
<hr/>	
P	
POI	32
Proceed automatically	69
<hr/>	
R	
Recent Destinations	39
Remaining distance	67
Remaining time.....	67
Route information	49
Route options	48, 55
Route point	48
Route section	61
Block	63
Unblock.....	63
<hr/>	
S	
Saved destinations	38
Screen	
Address	31
Configuration	66
Destination	29
Itinerary	57
Settings	66
Special destination.....	32
Search facilities.....	6
Security information	4
Serial number.....	12
Service	7
Settings	
Auto mode	68
Format.....	69
Home address.....	70
Info on the map	66
Itinerary	69
Representation.....	68
Route information.....	67
Speed profile.....	69
Volume	67
Skins	68
Special destination	32, 51, 66
Special destinations	
In another town	35
Nearby	33
Of superregional significance	34
Speech guidance	47
Speed profile	69
Stage	52
Stage point.....	62
Street names.....	51, 66
Support	7
<hr/>	
T	
Time of arrival	67
<hr/>	
U	
Units	69
<hr/>	
V	
Voice Instruction	50
Volume	67
<hr/>	
W	
Way list	61
Waypoints	47
<hr/>	
Z	
Zoom bar	46

Free Manuals Download Website

<http://myh66.com>

<http://usermanuals.us>

<http://www.somanuals.com>

<http://www.4manuals.cc>

<http://www.manual-lib.com>

<http://www.404manual.com>

<http://www.luxmanual.com>

<http://aubethermostatmanual.com>

Golf course search by state

<http://golfingnear.com>

Email search by domain

<http://emailbydomain.com>

Auto manuals search

<http://auto.somanuals.com>

TV manuals search

<http://tv.somanuals.com>