

NAVMAN

M-Nav 650

User Manual



English - Europe / Australia / New Zealand

Download from [Www.Somanuals.com](http://www.Somanuals.com). All Manuals Search And Download.

Contents

1	Introduction	5
1.1	<i>GPS and GPS Signals</i>	5
1.2	<i>Safety Notice</i>	5
2	M-Nav 650 Hardware	7
2.1	<i>Box Contents</i>	7
2.2	<i>Front Components</i>	8
2.3	<i>Back Components</i>	9
3	Positioning the M-Nav in a Vehicle	10
3.1	<i>M-Nav Suction-Mount</i>	10
3.2	<i>M-Nav Adhesive Tape and Screw-Mount</i>	10
3.3	<i>Panavise Screw-Mount</i>	11
3.4	<i>Inserting the M-Nav into the Clip</i>	12
4	Getting Started	13
4.1	<i>Main Menu Screen</i>	14
4.2	<i>To put the M-Nav in Standby Mode</i>	14
5	Modem Status	15
5.1	<i>GPS</i>	15
5.2	<i>Modem Signal Strength</i>	15
6	Messaging	16
6.1	<i>The Message List</i>	16
6.2	<i>Receiving Messages</i>	16
6.3	<i>Sending a Message</i>	17
6.4	<i>Reading Messages</i>	17
6.5	<i>Reading / Editing Sent Messages</i>	18
6.6	<i>Going to a Message Location</i>	18
	<i>To navigate immediately to the message location:</i>	19
7	Setting Your Destination	20
7.1	<i>Destination Screen</i>	20
7.2	<i>Keyboard Screen</i>	21
7.3	<i>Preview Screen</i>	22
7.4	<i>Address Search Rules</i>	23
8	Setting Your Destination by Address	24
8.1	<i>Case Study 1: Europe and New Zealand</i>	24
8.2	<i>Case Study 2: Australia, Canada and USA</i>	28
9	Setting Your Destination by POI	32
9.1	<i>Case Study 1: Europe and New Zealand</i>	32
9.2	<i>Case Study 2: Australia, Canada and USA</i>	35
10	Using the 2D Map screen to Plan a Route	38
11	Multi-stop Trips	39
11.1	<i>Case Study 1: Europe and New Zealand</i>	39
11.2	<i>Case Study 2: Australia, Canada and USA</i>	44
11.3	<i>Skipping a Destination Point</i>	49
11.4	<i>Adding Message Locations to Multi-stop Trips</i>	49

12	Viewing your Route	50
12.1	2D Map Screen	50
12.2	3D Map Screen	51
12.3	Message and Look Screen	51
12.4	Next Turn Screen	52
12.5	Next 4 Turns Screen	52
12.6	Back-On-Track™ Automatic Rerouting	53
12.7	Route Information Screen	53
13	The 2D Map Screen Pop-up Menu	55
14	Avoiding an Area	56
15	Route Demonstrator	57
15.1	Select Departure Point	57
15.2	Select Destination Point	57
15.3	Activate Route Demonstrator	57
15.4	To Deactivate Route Demonstrator	58
16	Favourites and My Home	59
16.1	Saving a Favourite	59
16.2	Saving a Favourite from the 2D Map Screen	60
16.3	Editing the Name of the Favourite	61
16.4	Deleting a Favourite	62
16.5	Navigating to a Favourite	63
16.6	Navigating to My Home	63
17	Preferences	64
17.1	Screen Brightness	64
17.2	Volume	64
17.3	Routing	64
17.4	Language	66
17.5	Maps	67
	Display	67
	Internal Memory	68
	Points of Interest (POIs)	68
17.6	Alerts	69
	Active POIs	69
	Speed	70
17.7	My Data	71
17.8	More Preferences	72
	GPS Status	72
	Measurements	73
	Startup	74
Appendix A:	Power Management	75
	Powering Up from Off	75
	Powering Up from Standby	75
	Powering Down from On	75
Appendix B:	Street Types	76
Contacts		79

1 Introduction

Thank you for purchasing this Navman M-Nav 650. We hope you enjoy your new GPS messaging and navigation system.

Whether your fleet operates in your own city, across a country or a continent, the M-Nav will direct your fleet operators to their destination without the need for map books or second hand directions. With destinations provided from the OnlineAVL client by the Fleet Manager you can rest assured that your fleet operators are taking the fastest route to the correct destination all the time, every time.

The Global Positioning System (GPS) is available free of charge, at any time, and is usually accurate to within 5 m (15 ft). Your M-Nav map provides street-level detail for door-to-door navigation, including Points of Interest (POIs) such as accommodation, petrol stations, railway stations and airports.

Navman welcomes your feedback. To contact us or visit our website, see Support Information in the Contacts section.

1.1 GPS and GPS Signals

The GPS is a network of satellites that transmit accurate time and position information worldwide. GPS receivers receive signals from these satellites and use the information to determine an exact location. Satellites orbit the earth at around 12,000 miles. While a GPS receiver can detect signals from up to 12 satellites at any time, only three signals are needed to provide a position or "GPS fix" (latitude and longitude) for vehicle navigation systems.

The GPS receiver, such as the Navman Halo or Qube, receives GPS signals. To receive GPS signals, ensure that the receiver is outdoors, or in a vehicle outdoors, and the GPS antenna has an unobstructed view of the sky.

For more information about GPS and your M-Nav, see Section 5.

1.2 Safety Notice

WARNING: In a vehicle, it is your sole responsibility to place, secure and use the M-Nav in a manner that will not cause accidents, personal injury or property damage. The user of this product is solely responsible for observing safe driving practices and for all use of this device. It is your responsibility to read and follow the vehicle mount installation instructions and to use the product consistent with your government's laws/regulations. Consult the vehicle manual to ensure the mounting location is safe.

It is your sole responsibility to adhere to the following safety instructions at all times:

- Do not operate the M-Nav while driving or place the M-Nav in a position that obstructs the driver's view.
- Do not mount the M-Nav in a way that may be distracting or interfere with the safe operation of the vehicle, the deployment of airbags or other safety equipment.
- Do not leave the M-Nav in view while your vehicle is unattended, especially in strong or direct sunlight.
- Do not use or handle the M-Nav when it is hot; leave it to cool, out of direct sunlight.

This device does not have the functionality to determine routes based on the height, weight, length or Hazmat classification of the vehicle in which the device is installed. Accordingly it is your sole responsibility for ensuring that your vehicle is legally and physically able to travel over routes that may include narrow, twisting or steep roads, weak, narrow or low bridges, tunnels or other obstacles on the routes determined by this device.

Failure to adhere to these instructions may lead to serious personal injury, including death, or property damage. Navman disclaims all liability for use of the M-Nav that contributes to injuries, death, property damage or violates law.

2 M-Nav 650 Hardware

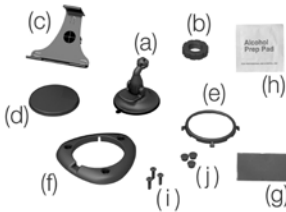
2.1 Box Contents



Carry Case



RJ-45 cable



Mounting brackets:

- | | |
|--------------------------|--------------------|
| (a) Suction-cup/ballfoot | (f) Screw plate |
| (b) Locking-nut | (g) Adhesive tape |
| (c) Socket-clip | (h) Alcohol swab |
| (d) Baseplate | (i) 3 x Screws |
| (e) Retainer ring | (j) 3 x Screw caps |

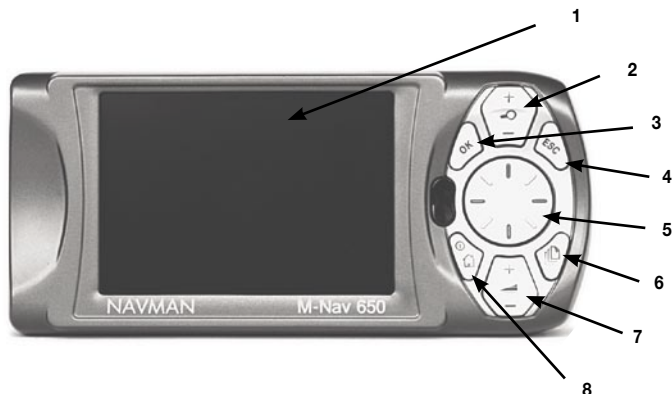







Documentation, including:

- User Manual
- Quick Start Guide
- Limited Warranty Agreement
- Registration Card

2.2 Front Components

We recommend that you familiarize yourself with the M-Nav's basic operations, such as using the **8-way toggle** and Volume button. **Note:** Some buttons have two functions.



	Component	Description
1	Screen	Displays maps and menu options
2	Zoom  /Brightness 	Changes the amount of map area shown, or press and hold to adjust the screen brightness
3	OK	Confirms the selected menu option, text or preference
4	ESC	Cancels an action, returns to the previous screen or deletes the last text character on the Keyboard screen; hold down for longer to delete a whole line at once.
5	8-way toggle	Selects Main Menu options, keyboard characters and Preferences, moves around the 2D Map screen to select a destination, and scrolls through lists, such as messages.
6	Page 	Cycles through the 2D Map, 3D Map, Next Turn and Next 4 Turns screens; displays additional preference or search-result screens, when available.
7	Volume 	Broadcasts the next voice-guidance instruction and adjusts voice-guidance volume.
8	Menu/Power 	Switches between the Main Menu screen and the Message List screen Places the M-Nav in Standby mode.

2.3 Back Components



	Component	Description
1	Speaker	Broadcasts voice commands and warnings; Use Volume button to adjust
2	Power LED	Lit when receiving power
3	Qube Power and Data Socket	Connection socket for power and data from the Navman Halo Qube
4	USB Socket	Connection socket for USB cable to your computer

3 Positioning the M-Nav in a Vehicle

The M-Nav can be mounted in a vehicle 3 ways:

- By suction on the windscreen;
- By suction, adhesive tape and screws drilled directly into the dashboard;
- By using the Panavise screw mount.

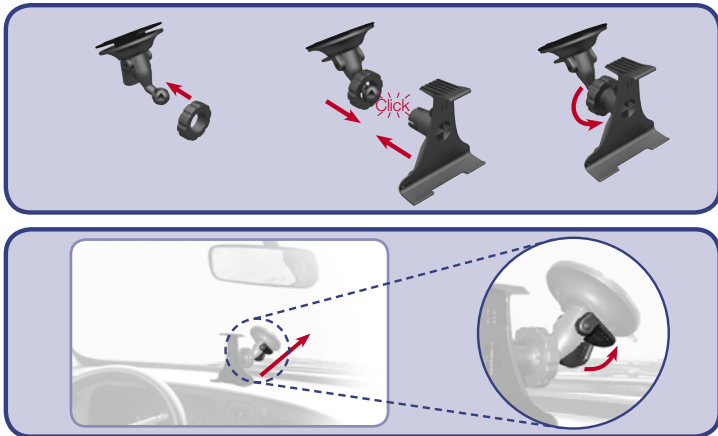
Note: The last two mounts are permanent solutions that will mark your dashboard.

Follow the safety guidelines in Section 1 to ensure that the M-Nav does not obstruct the driver's view, or interfere with the operation of vehicle airbags and safety devices.

3.1 M-Nav Suction-Mount

Choose a position on the windshield that is clearly visible to the driver without obstructing the view of the road.

- Slip the locking-nut over the ballfoot.
- Snap the socket-clip onto the ballfoot.
- Screw the locking-nut onto the thread of the socket-clip until firm.
- Use the alcohol swab to clean and dry the suction-cup and the mounting-area on the windshield, then attach the suction-mount to the windshield:
- Hold the suction-cup firmly against the windshield and
- Press the lever towards the suction-cup.

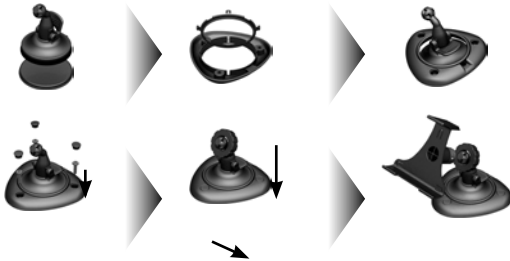


3.2 M-Nav Adhesive Tape and Screw-Mount

You can use the baseplate, adhesive tape and screws supplied to permanently mount the M-Nav directly into the vehicle dashboard.

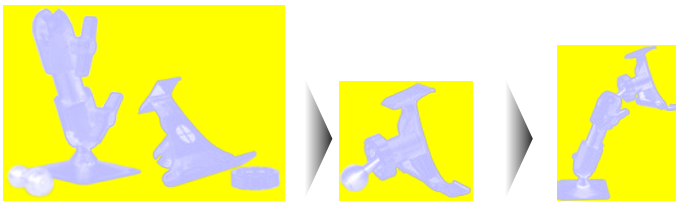
Assembling the M-Nav Screw-Mount

- 1 Choose a position on the dashboard where the M-Nav will be clearly visible to the driver, and ensure that the mounting surface is clean and dry.
- 2 Remove the protective layer from the tape and press down firmly for 30 seconds.
- 3 Press the suction-cup firmly against the surface and press the lever down.
- 4 Use the baseplate and screws supplied to fix the M-Nav base into the dashboard.
- 5 Slip the locking-nut over the ballfoot, with the flat side facing upwards.
- 6 Snap the socket-clip onto the ballfoot.
- 7 Screw the locking-nut onto the thread of the socket-clip until firm.



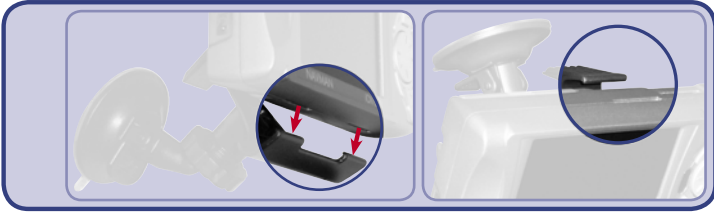
3.3 Panavise Screw-Mount

The Panavise mounting system mounts similarly to the M-Nav Screw-Mount described in Section 3.2, from point 4 onwards.



3.4 Inserting the M-Nav into the Clip

- Position the two locating-tabs on the underside of the M-Nav into the corresponding slots on the clip.
- Snap the upper side of the M-Nav into the clip.



- Connect the M-Nav to your Halo Qube GPS device with the RJ-45 cable. The M-Nav will turn on.




4 Getting Started

Step 1: Language

- Use the **8-way toggle** to choose your language, then press **OK**.




- To prevent the Language screen from displaying on each startup, use the **8-way toggle** to select the Do not show on startup check box, then press **OK**.
- Press  to go to the next screen. The Warning screen will display.

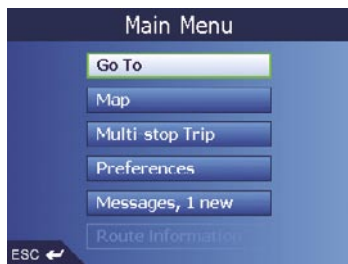
Step 2: Warning Screen

- Read the warning message.
- Select Accept, then press **OK** to confirm that you understand. The first Tutorial screen will display.

Step 3: Tutorial Screens


- Read the Tutorial screen.
- To prevent the Tutorial from displaying on startup, use the **8-way toggle** to select the Do not show Tutorial on startup check box, then press **OK**.
- Press  to move through each Tutorial screen. The Main Menu screen will display.

4.1 Main Menu Screen



- Use the **8-way toggle** to select a Main Menu option; confirm a selection by pressing **OK**.
- The Route Information option is only available when a route has been calculated. See Section 12.6 for more information.

4.2 To put the M-Nav in Standby Mode


- Press  for three seconds until the screen turns off. For more information on power management, see Appendix A.

5 GPS and Modem Status

5.1 GPS

Signals are transmitted by Global Positioning System (GPS) satellites orbiting the Earth.

You can view your GPS status at any time from the 2D Map, 3D Map, Next Turn and Next 4 Turns screens.

The GPS Strength Indicator  will display green when there is a valid fix (2D or 3D), or red when no fix is available.

For more detailed information on your current GPS fix, see Section 17.8.



5.2 Modem Signal Strength

The lower left corner of the display also indicates the Qube modem signal strength.



No Signal

The M-Nav is unable to contact the server. This may be due to the server being off, a connection problem, heavy signal interference or coverage is not available in the current location.



Intermittent Signal

The M-Nav is having trouble communicating with the server. If the problem persists, try starting again, or check the connections.



Good Signal

The M-Nav is receiving reliable data from the server.

6 Messaging

The M-Nav is a mobile data terminal that receives text messages from the OnlineAVL client in your office and is capable of sending preset or user entered replies or outbound messages back to your fleet operator.

6.1 The Message List

The Message List is used for all messaging related tasks, such as reading new messages, replying to messages, or creating new messages.



6.2 Receiving Messages

When a text message is sent to you, a New Message alert will be displayed, no matter what screen you are currently viewing.



Using the **8-way toggle** select EITHER:


- **Cancel** to remove this screen, then press **OK**. The alert will disappear. (You may view the message later in the Message List screen).
- **Read** to view the entire message, then press **OK**. The Read message screen will display. From the Read Message screen, use the **8-way toggle** to select **Message List, Reply, Show, Delete** or **Accept & Go**, then press **OK**.

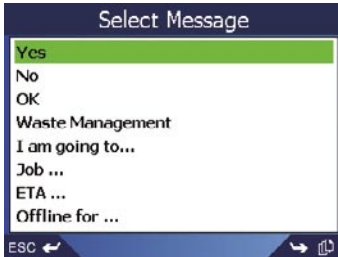
Note: The M-Nav stores up to 100 incoming messages.



6.3 Sending a Message

You can send a message by replying to an incoming message or sending your own original message.

Note: Message templates and template folders are set up by your fleet operator.

- From any screen, press . The Message List screen will display.
 - To Reply:** Using the **8-way toggle**, select the message you wish to reply to. Press **OK**. The Read Message screen will display.
 - Select Reply. Press **OK**. The Select Message screen will display.
 - To Send a New Message:** Using the **8-way toggle**, select Send. Press **OK**. The Select Message screen will display.

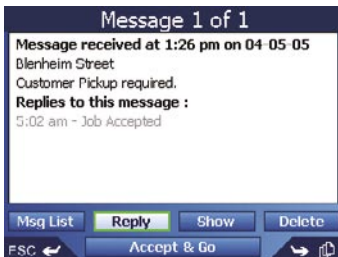


- Select a message template from the list provided. Press  to see more templates, as well as <New Message>. Press **OK**. The Edit Message screen will display.
- Using the **8-way toggle**, either modify an existing template or compose a new message. For details on how to use the Keyboard screen, see Section 7.2.
- Select Send. Press **OK**. The message will be sent, and you return to the Message List screen.
- Press  to return to the Main Menu.

6.4 Reading Messages

To read a message and any replies that have been sent, select the message from the Message List screen.

The menu options along the bottom of the screen perform the following actions:





- | | |
|--------------------------|--|
| Msg List | Returns you to the Message List display |
| Reply | Allows you to reply to the message, using either Canned Messages or a user created message |
| Show * | Provides a map display of the location associated with the message. See Section 6.6 |
| Delete | Deletes the selected message and any replies that were sent. |
| Accept & Go * | Takes you directly to Navigation Mode. |

* Only available when a message has a location from the OnlineAVL

6.5 Reading / Editing Sent Messages

You are able to read, edit and re-send one of the last 100 messages composed.

To access your sent messages:

- Press : The Message List screen will display.
- Select Send. The Select Message screen will display.
- Press  repeatedly until the last Select Message screen displays.
- Select Recent Messages. A new Select Message screen will display, listing the last messages sent, with the most recent at the top of the screen.
- Select the message you wish to read or re-send. Press **OK**. The Create Message screen will display.



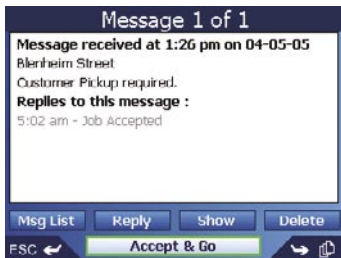
You may re-send this message or edit it.

- For details on how to use the Keyboard screen, see Section 7.2.
- If you wish to send this message, select Send and press **OK**.
- To exit the Edit Message screen without sending, press and hold down the **ESC** button to clear the message. Then press **ESC** twice. The Main Menu screen will display.

6.6 Going to a Message Location

Messages may contain an embedded GPS location, sent from the OnlineAVL system.

- From the Message List screen, select a location-enabled message. Press **OK**. The Read Message screen will display. The Accept & Go and Show buttons will be available to use.



To navigate immediately to the message location:

Having received a message holding an embedded location, you may choose to use the “Accept & Go” option. The M-Nav will enter navigation mode immediately.

- Select Accept & Go. The 2D Map screen will display. The route is calculated, and the M-Nav guides you to the location.

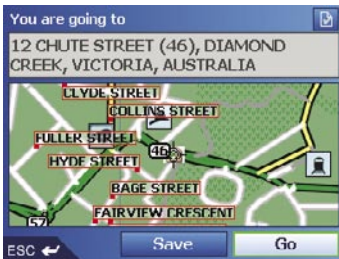


Notes:

- If you are currently in a routing mode when you select “Accept & Go”, you will have the option of whether or not to cancel your current route.
- When Accept & go is selected, the message “Job Accepted” is automatically sent.

To show the location:

- Select Show. Press **OK**. The Location Map screen will display.
- To Save this location as a Favorite, select Save. Press **OK**. The New Favourite screen will display. See Section 16.
- To Go to this location, select Go. Press **OK**. The 2D Map screen will display. The route is calculated, and the M-Nav guides you to the location.



Note:

- Message Locations are also easily added to Multi-stop Trips, allowing you to arrange several destination points for days, even weeks. For more details, see Section 11.

This device does not have the functionality to determine routes based on the height, weight, length or Hazmat classification of the vehicle in which the device is installed. Accordingly it is your sole responsibility for ensuring that your vehicle is legally and physically able to travel over routes that may include narrow, twisting or steep roads, weak, narrow or low bridges, tunnels or other obstacles on the routes determined by this device.

Failure to adhere to these instructions may lead to serious personal injury, including death, or property damage. Navman disclaims all liability for use of the M-Nav that contributes to injuries, death, property damage or violates law.

7 Setting Your Destination

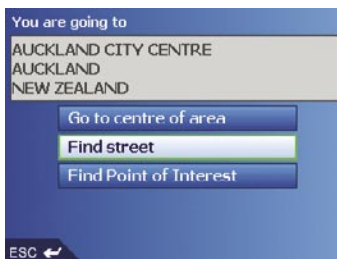
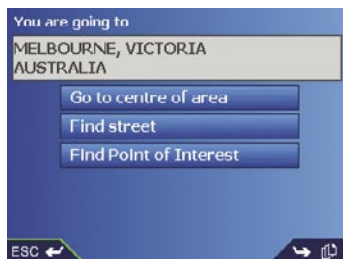
For your safety, enter destination information before you start a journey. Do not operate the M-Nav while driving.

Select a destination using the Destination, Keyboard and Preview screens, which used together form a destination wizard.

This section describes how to use each of these screens and provides two case studies to help guide you through setting your destination.

7.1 Destination Screen

The Destination screen is used to select your destination by area, street, postal code/ZIP code, Point of Interest (POI), intersection, city, town, country or state.




As you specify each part of the address, it will display in the You are going to field at the top of the screen.

The available options will change to reflect the parts of the address still to be completed.

- Use the **8-way toggle** to move around the Destination screen.
- To select an option, press **OK**.


7.2 Keyboard Screen

The Keyboard screen will display when you are required to enter text, such as when searching for a street name. As you select each character, the first two results will display. Press  to see more search results. Search results will be listed in matching order, with the closest matches appearing at the top of the list.



The Keyboard screen toggles between 4 character sets: Uppercase, lowercase, Alternate and Number/symbol.

(To change between Alphabet and Qwerty layouts, see Section 17.)

As you select each character, the first two results will display. Press  to see more search results.

- Use the **8-way toggle** to move around the Keyboard screen.
- To select a character or a search result, press **OK**.


To cycle through uppercase, lowercase and alternate letters on the Keyboard screen:

- Select the ABC/abc/Alt key.
- Press **OK** repeatedly to switch between the 3 layouts.

To display the number/symbol Keyboard screen:

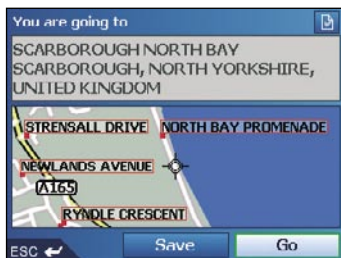
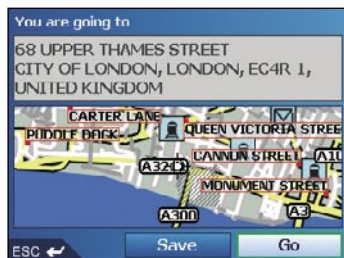
- Select the 123 key, then press **OK**.




Editing Text

- To delete a character, press **ESC** or select , then press **OK**; hold **ESC** to delete the line.
- To re-position the cursor, select the text box, then use left/right on the **8-way toggle** to move the cursor.

7.3 Preview Screen

The Preview screen is used to display a preview of your destination before navigating to it, saving it as a Favourite or displaying it on the 2D Map screen.



- Use the **8-way toggle** to move around the Preview screen.
- To display a smaller area in greater detail, press .
- To display a larger area in less detail, press .
- To display your destination on the 2D Map screen, select the preview map, then press **OK**. The 2D Map screen will display.
- To save your destination as a Favourite, select Save, then press **OK**. The New Favourite screen will display. See Section 16.
- To calculate the route and open the 3D Map screen, select Go, then press **OK**. The 3D Map screen will display.
- To view Point of Interest (POI) details when your destination is a POI, select , then press **OK**. The POI Detail screen will display.

7.4 Address Search Rules

The following rules apply when searching for a destination in Europe:

Street Names with Dates

If a street name contains a date or a number, search by the first number:

Example 1: If searching for "Faubourg du 13 Juillet 1920", search by "13".

Example 2: If searching for "Avenue du 14 Avril 1914", search by "14".

Example 3: If searching for "Rue de la 1^{ere} Armée", search by "1".

Streets Named After People (excluding Italy)

If a street name is a person's name (including at least a first and last name), search by the first name:

Example 1: If searching for "Rue Albert Mathieu", search by "Albert".

Example 2: If searching for "Fred Archer Way", search by "Fred".

Example 3: If searching for "Franz Grillparzer-Strasse", search by "Franz".

Streets Named After People - Italy

In Italy, if a street name is a person's name (including at least a first and last name), search by the last name:

Example 1: If searching for "Via de Angelo de Thomasis", search by "Thomasis".

Example 2: If searching for "Via Placido Giovannella", search by "Giovannella".

Example 3: If searching for "Via della Giacomo Marca", search by "Marca".

Postcodes in United Kingdom and Netherlands

When searching by postcode in United Kingdom or Netherlands, type the postcode with spaces and without the last two letters.

Example 1: If searching for "RH6 9ST", search by "RH6 9".

Example 2: If searching for "3514 BN", search by "3514".

For exact European street type abbreviations, see Appendix A.

8 Setting Your Destination by Address

8.1 Case Study 1: Europe and New Zealand

This case study will show you how to set your destination by selecting your country, then area, then street, then house number.

Note: This case study applies to Europe and New Zealand only. For navigating in Australia, Canada and USA, see Section 8.2.

Step 1: Open the Destination screen

- From the Main Menu, select Go To, then press **OK**.
- From the Go To screen, select Address or POI, then press **OK**. The Destination screen will display.

Important Note: If this is the first time you are setting your destination and you have maps from more than one country installed and selected, then the Select Country screen will display instead of the Destination screen. Go directly to Step 2.b. The next time you perform this procedure, the Destination screen will open as expected.

Step 2: Select the Country of Destination

If you only have the map of one country installed and selected, that country is selected for your destination by default and cannot be changed. Go to Step 3.

- a. From the Destination screen, select Change country, then press **OK**. The Select country screen will display.



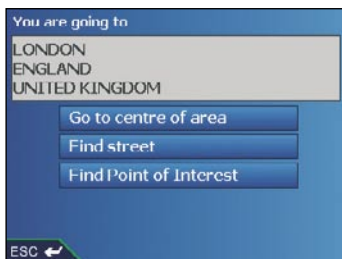
- b. Select a country using the **8-way toggle**. Press **OK** to select from the list. The Destination screen will display.

Step 3: Find the Area of Destination

- a. From the Destination screen, select Find area, then press **OK**. The Keyboard screen will display.



- b. Use the Keyboard screen to find the area of your destination. For information on using the Keyboard screen, see Section 7.2. The Destination screen will display.

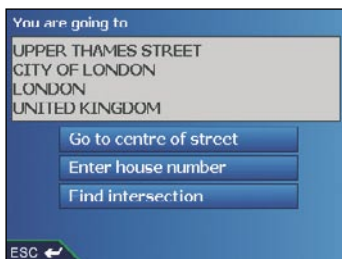


Step 4: Find the Street of Destination

- a. From the Destination screen, select Find street, then press **OK**. The Keyboard screen will display.



- b. Use the Keyboard screen to find the street of your destination. For information on using the Keyboard screen, see Section 7.2. The Destination screen will display.



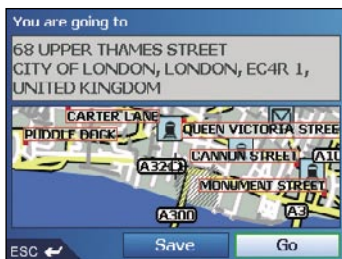
Step 5: Find the House Number of Destination

- a. From the Destination screen, select Enter house number, then press **OK**. The Keyboard screen will display.

Note: If Enter house number option is not displayed, house numbers are not available for your selected street. Select Go to centre of street, then press **OK** to display the Preview screen. Go to step 5.c.



- b. Use the Keyboard screen to find the house number of your destination. For information on using the Keyboard screen, see Section 7.2. The Preview screen will display.



- c. Complete one of the following:

- To calculate the route and open the 3D Map screen, select Go, then press **OK**. The 3D Map screen will display.

- To display the destination on the 2D Map screen, select the preview map, then press **OK**. The 2D Map screen will display.
- To save the destination as a Favourite, select Save, then press **OK**. The New Favourite screen will display. See Section 16.
- To change your destination, press **ESC**. The Destination screen will display.

To return to the Main Menu, press .

8.2 Case Study 2: Australia, Canada and USA

This case study will show you how to set your destination by selecting your country, then state, then town or city, then street, then house number.

Note: This case study applies to Australia, Canada and USA only. For navigating in Europe and New Zealand, see Section 8.1.

Step 1: Open the Destination screen

- a. From the Main Menu, select Go To, then press **OK**.
- b. From the Go To screen, select Address or POI, then press **OK**. The Destination screen will display.

Important Note:

- i. If this is the first time you are setting your destination and you have maps from more than one country installed and selected, then the Select Country screen will display instead of the Destination screen. Go directly to Step 2.b. The next time you perform this procedure, the Destination screen will open as expected.
- ii. If this is the first time you are setting your destination and you have maps from only one country, but more than one state installed and selected, then the Select State screen will display instead of the Destination screen. Go directly to Step 3. The next time you perform this procedure, the Destination screen will open as expected.

Step 2: Select the Country of Destination

If you only have the map of one country installed and selected, that country is selected for your destination by default and cannot be changed. Go to Step 3.

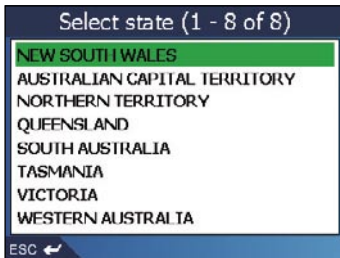
- a. From the Destination screen, select Change country or Change country or state then press **OK**. The Select country screen will display.



- b. Select a country using the **8-way toggle**. Press **OK** to select from the list. The Select state screen will display.
If you only have the map of one state installed and selected, that state is selected for your destination by default. Go to Step 4.

Step 3: Select the State of Destination

If you only have the map of one state installed and selected, that state is selected for your destination by default and cannot be changed. Go to Step Four: Find the Town or City of Destination.



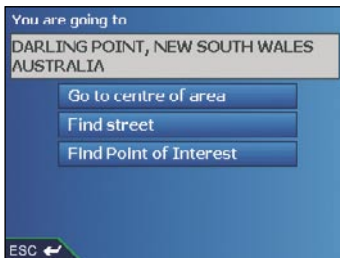
- a. Select a state using the **8-way toggle**. Press **OK** to select from the list. The Destination screen will display.

Step 4: Find the Town or City of Destination

- a. From the Destination screen, select Find town/city, then press **OK**. The Keyboard screen will display.



- b. Use the Keyboard screen to find the town or city of your destination. For information on using the Keyboard screen, see Section 7.2. The Destination screen will display.

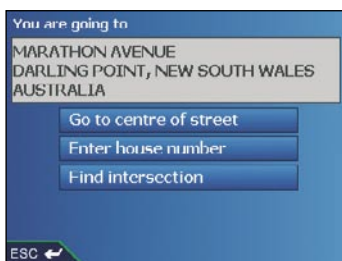


Step 5: Find the Street of Destination

- a. From the Destination screen, select Find street, then press **OK**. The Keyboard screen will display.



- b. Use the Keyboard screen to find the street of your destination. For information on using the Keyboard screen, see Section 7.2. The Destination screen will display.



Step 6: Find the House Number of Destination

- a. From the Destination screen, select Enter house number, then press **OK**. The Keyboard screen will display.

Note: If Enter house number option is not displayed, house numbers are not available for your selected street. Select Go to centre of street, then press **OK** to display the Preview screen. Go to step 6.c.



- b. Use the Keyboard screen to find the house number of your destination. For information on using the Keyboard screen, see Section 7.2. The Preview screen will display.



- c. Complete one of the following:
- To calculate the route and open the 3D Map screen, select Go, then press **OK**. The 3D Map screen will display.
 - To display the destination on the 2D Map screen, select the preview map, then press **OK**. The 2D Map screen will display.
 - To save the destination as a Favourite, select Save, then press **OK**. The New Favourite screen will display. See Section 16.
 - To change your destination, press **ESC**. The Destination screen will display.

To return to the Main Menu, press .

9 Setting Your Destination by POI

9.1 Case Study 1: Europe and New Zealand

This case study will show you how to set your destination by selecting a Point of Interest (POI).

A POI is a named site, feature, landmark or public venue which can be displayed as an icon on the map. POIs are grouped by type, such as parks and museums.

Note: This case study applies to Europe and New Zealand only. For navigating in Australia, Canada and USA, see Section 9.2.

Step 1: Open the Destination screen

- a. From the Main Menu, select Go To, then press **OK**.
- b. From the Go To screen, select Address or POI, then press **OK**. The Destination screen will display.

Important Note:

If this is the first time you are setting your destination and you have maps from more than one country installed and selected, then the Select Country screen will display instead of the Destination screen. Go directly to Step 2.b. The next time you perform this procedure, the Destination screen will open as expected.

Step 2: Select the Country of Destination

If you only have the map of one country installed and selected, that country is selected for your destination by default and cannot be changed. Go to Step Three: Select the Type of POI.

- a. From the Destination screen, select Change country, then press **OK**. The Select country screen will display.

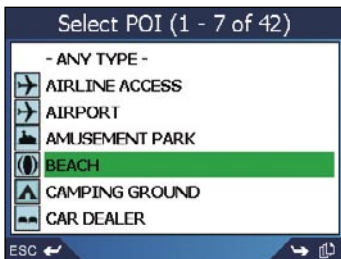


- b. Select a country using the **8-way toggle**. Press **OK** to select from the list. The Destination screen will display.

Step 3: Select the Type of POI

Note: To narrow the search for a type of POI, you can first search by Area.

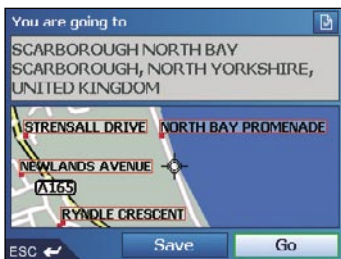
- a. From the Destination screen, select Find Point of Interest, then press **OK**. The Select POI screen will display.




- b. Select a POI type using the **8-way toggle**. Press **OK** to select from the list. The Keyboard screen will display.



- c. Use the Keyboard screen to find the POI. For information on using the Keyboard screen, see Section 7.2. The Preview screen will display.



d. Complete one of the following:

- To calculate the route and open the 3D Map screen, select Go, then press **OK**. The 3D Map screen will display.
- To display the destination on the 2D Map screen, select the preview map, then press **OK**. The 2D Map screen will display.
- To save the destination as a Favourite, select Save, then press **OK**. The New Favourite screen will display. See Section 16.
- To change your destination, press **ESC**. The Desintation screen will display.
- To view Point of Interest (POI) details when your destination is a POI, select , then press **OK**. The POI Detail screen will display.

To return to the Main Menu, press .

9.2 Case Study 2: Australia, Canada and USA

This case study will show you how to set your destination by selecting a Point of Interest (POI).

A POI is a named site, feature, landmark or public venue which can be displayed as an icon on the map. POIs are grouped by type, such as parks and museums.

Note: This case study applies to Australia, Canada and USA only. For navigating in Europe and New Zealand, see Section 9.1.

Step 1: Open the Destination screen

- From the Main Menu, select Go To, then press **OK**.
- From the Go To screen, select Address or POI, then press **OK**. The Destination screen will display.

Important Note:

- If this is the first time you are setting your destination and you have maps from more than one country installed and selected, then the Select Country screen will display instead of the Destination screen. Go directly to Step 2.b. The next time you perform this procedure, the Destination screen will open as expected.
- If this is the first time you are setting your destination and you have maps from only one country, but more than one state installed and selected, then the Select State screen will display instead of the Destination screen. Go directly to Step 3. The next time you perform this procedure, the Destination screen will open as expected.

Step 2: Select the Country of Destination

If you only have the map of one country installed and selected, that country is selected for your destination by default and cannot be changed. Go to Step Three: Select the State of Destination.

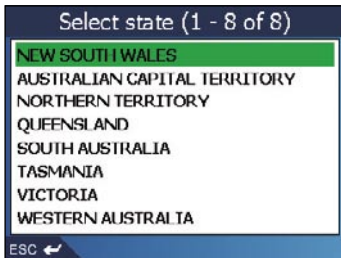
- From the Destination screen, select Change country or Change country or state then press **OK**. The Select country screen will display.



- Select a country using the **8-way toggle**. Press **OK** to select from the list. The Select state screen will display.
 - If you only have the map of one state installed and selected, that state is selected for your destination by default. Go to Step Four: Select the Type of POI.

Step 3: Select the State of Destination

If you only have the map of one state installed and selected, that state is selected for your destination by default and cannot be changed. Go to Step 4.

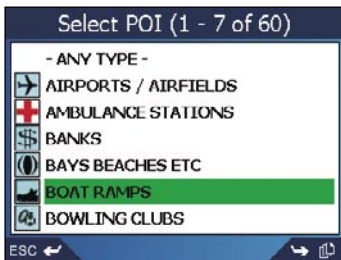


- a. Select a state using the **8-way toggle**. Press **OK** to select from the list. The Destination screen will display.

Step 4: Select the Type of POI

Note: To narrow the search for a type of POI, you can first search by Town or City.

- a. From the Destination screen, select Find Point of Interest, then press **OK**. The Select POI screen will display.




- b. Select a POI type using the **8-way toggle**. Press **OK** to select from the list. The Keyboard screen will display.



- c. Use the Keyboard screen to find the POI. For information on using the Keyboard screen, see Section 7.2. The Preview screen will display.





- d. Complete one of the following:
- To calculate the route and open the 3D Map screen, select **Go**, then press **OK**. The 3D Map screen will display.
 - To display the destination on the 2D Map screen, select the preview map, then press **OK**. The 2D Map screen will display.
 - To save the destination as a Favourite, select **Save**, then press **OK**. The New Favourite screen will display. See Section 16.
 - To change your destination, press **ESC**. The Destination screen will display.
 - To view Point of Interest (POI) details when your destination is a POI, select , then press **OK**. The POI Detail screen will display.

To return to the Main Menu, press .

10 Using the 2D Map screen to Plan a Route

You can plan a route directly from the 2D Map screen using the Pop-up menu.

1. From the Main Menu, select Map, then press **OK**. The 2D Map screen will display.
 - Move around the 2D Map screen using the **8-way toggle**.
 - To display a smaller area in greater detail, press .
 - To display a larger area in less detail, press .
2. Press **OK** to display cross-hair on the 2D Map screen. To remove the cross-hair press **ESC**.
3. Use the **8-way toggle** to place the intersection of the cross-hair on a destination; the street will highlight and the street name will display.
4. Press **OK** to select the street as your destination. The Pop-up menu will display



5. Select Navigate To. The route is calculated and displayed on the 3D Map screen.

11 Multi-stop Trips

You can use the Multi-stop Trip screen to set multiple destination points for your trip. Your route will be calculated to go via each of these points in the specified order.

Destination points can be added via the Multi-stop Trip screen or by selecting Show Details from the pop-up menu on the 2D Map screen, then Add to Trip.

You can save up to 200 multi-stop trips, each with up to 14 destination points.

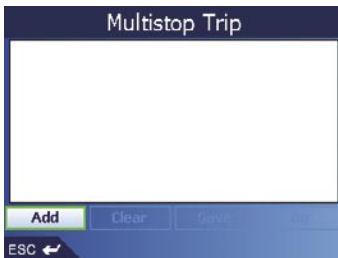
11.1 Case Study 1: Europe and New Zealand

This case study will show you how to set a multi-stop trip by selecting your country, then area, then street, then house number for each destination point.

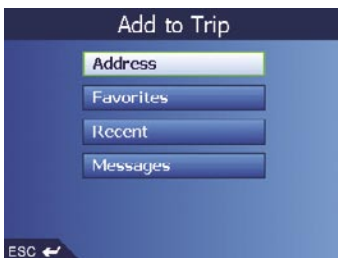
Note: This case study applies to Europe and New Zealand only. For navigating in Australia, Canada and USA, see Section 11.2.

Step 1: Start Your Multi-stop Trip

- a. From the Main Menu, select the Multi-stop Trip option. The Multi-stop Trip screen will display.



- b. Select Add, then press **OK**. The Add to Trip screen will display.



c. Select Address, then press **OK**. The Destination screen will open.

Note: You can also add destination points using Favourites, Recent destinations and Messages with a destination attacheded.

Step 2: Select the Country of Your Destination Point

If you only have the map of one country installed and selected, that country is selected for your destination point by default and cannot be changed. Go to Step 3.



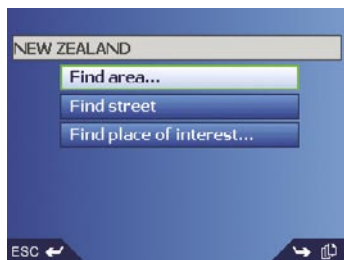
a. From the Destination screen, select Change country, then press **OK**. The Select Country screen will display.



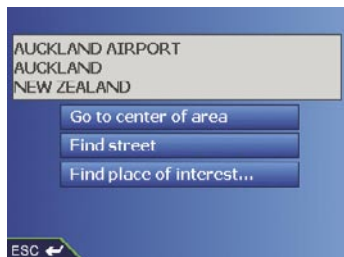
b. Select a country using the **8-way toggle**. Press **OK** to select from the list. The Destination screen will display.

Step 3: Find the Area of Your Destination Point

- a. From the Destination screen, select Find area, then press **OK**. The Keyboard screen will display.

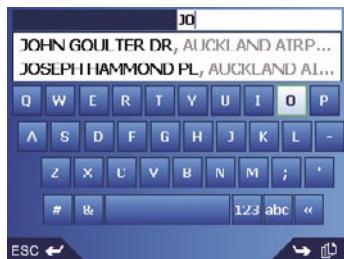


- b. Use the Keyboard screen to find the area of your destination point. For information on using the Keyboard screen, see Section 7.2. The Destination screen will display.

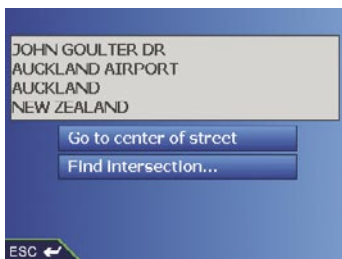


Step 4: Find the Street of Your Destination Point

- a. From the Destination screen, select Find street, then press **OK**. The Keyboard screen will display.



- b. Use the Keyboard screen to find the street of your destination point. For information on using the Keyboard screen, see Section 7.2. The Destination screen will display.



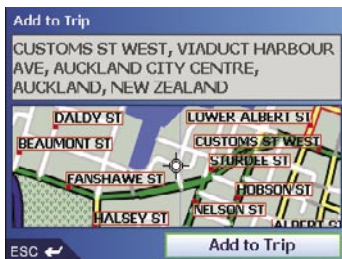
Step 5: Find the House Number of Your Destination Point

- a. From the Destination screen, select Enter house number, then press **OK**. The Keyboard screen will display.

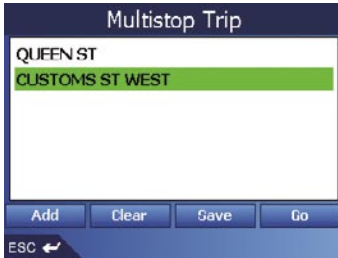
Note: If Enter house number option is not displayed, house numbers are not available for your selected street. Select Go to centre of street, then press **OK** to display the Preview screen. Go to step 5.c.



- b. Use the Keyboard screen to find the house number of your destination point. For information on using the Keyboard screen, see Section 7.2. The Preview screen will display.



- c. Select Add to Trip, then press **OK**. The Multi-stop Trip screen will display, listing your destination point.



- d. Complete one of the following:

Note: Destination points added, updated or deleted after a multi-stop trip has commenced will not affect the current route until the Go button is pressed.

If you want to ...	Then ...
add another destination point Note: Destination points added after a multi-stop trip has commenced will not be included in the current route.	<ul style="list-style-type: none"> - Select Add, then press OK. The Add to Trip screen will display. - Select Address, then press OK. The Destination screen will display. - Go to step 3.
change the order of your destination points	<ul style="list-style-type: none"> - Select a destination point to move using the 8-way toggle. Press OK to select from the list. The Preview screen will display. - Select Move, then press OK. The Multi-stop Trip screen will display. - Use the 8-way toggle to move the selected destination point to the correct position, then press OK.
calculate the route	select Go, then press OK . The 3D Map screen will display the calculated route.
delete all destination points	select Clear, then press OK .
delete one destination point	<ul style="list-style-type: none"> - Select a destination point to delete using the 8-way toggle. Press OK to select from the list. The Preview screen will display. - Select Delete From Trip, then press OK. The Multi-stop Trip screen will display.
save the multi-stop trip as a Favourite	<ul style="list-style-type: none"> - Select Save, then press OK. The New Favourite screen will display. - Select Save, then press OK. The Favourite will save and the Multi-stop Trip screen will display.

To return to the Main Menu screen, press .

11.2 Case Study 2: Australia, Canada and USA

This case study will show you how to set a multi-stop trip by selecting your country, then area, then street, then house number for each destination point.

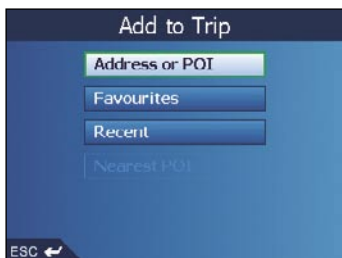
Note: This case study applies to Australia, Canada and USA only. For navigating in Europe and New Zealand, see Section 11.1.

Step 1: Start Your Multi-stop Trip

- a. From the Main Menu, select the Multi-stop Trip option. The Multi-stop Trip screen will display.

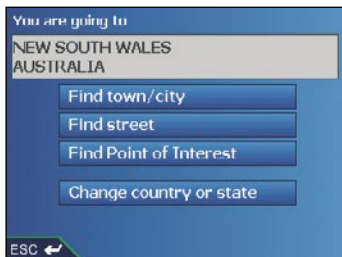


- b. Select Add, then press **OK**. The Add to Trip screen will display.



- c. Select Address or POI, then press **OK**. The Destination screen will open.

Note: You can also add destination points using Favourites, recent destinations and nearest Point of Interest.



Step 2: Select the Country of Your Destination Point

If you only have the map of one country installed and selected, that country is selected for your destination point by default and cannot be changed. Go to Step Three: Select the State of Your Destination Point.

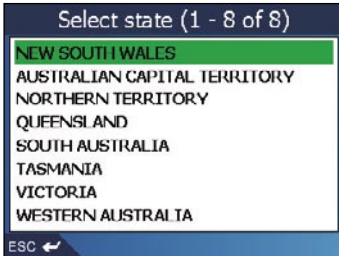
- a. From the Destination screen, select Change country or Change country or state, then press **OK**. The Select Country screen will display.



- b. Select a country using the **8-way toggle**. Press **OK** to select from the list. The Destination screen will display.
 - If you only have the map of one state installed and selected, that state is selected for your destination by default. Go to Step 4.

Step 3: Select the State of Your Destination Point

If you only have the map of one state installed and selected, that state is selected for your destination by default and cannot be changed. Go to Step Four: Find the Town or City of Destination.



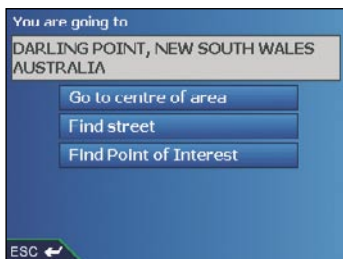
- a. Select a state using the **8-way toggle**. Press **OK** to select from the list. The Destination screen will display.

Step 4: Find the Town or City of Your Destination Point

- a. From the Destination screen, select Find town/city, then press **OK**. The Keyboard screen will display.



- b. Use the Keyboard screen to find the town or city of your destination. For information on using the Keyboard screen, see Section 7.2. The Destination screen will display.

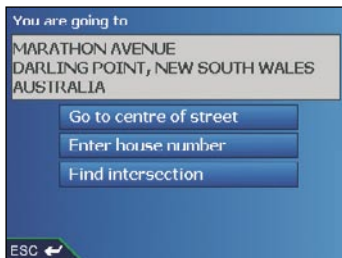


Step 5: Find the Street of Your Destination Point

- a. From the Destination screen, select Find street, then press **OK**. The Keyboard screen will display.



- b. Use the Keyboard screen to find the street of your destination point. For information on using the Keyboard screen, see Section 7.2. The Destination screen will display.

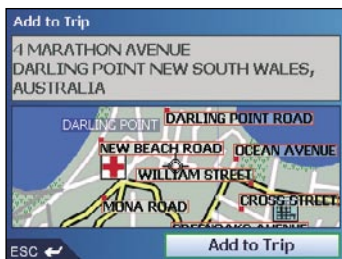


Step 6: Find the House Number of Your Destination Point

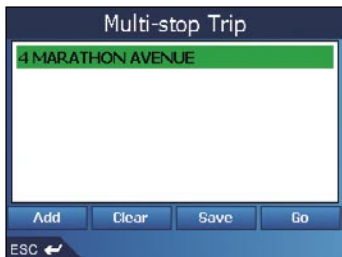
- a. From the Destination screen, select Enter house number, then press **OK**. The Keyboard screen will display.
Note: If Enter house number option is not displayed, house numbers are not available for your selected street. Select Go to centre of street, then press **OK** to display the Preview screen. Go to step 6.c.



- b. Use the Keyboard screen to find the house number of your destination point. For information on using the Keyboard screen, see Section 7.2. The Preview screen will display.



- c. Select Add to Trip, then press **OK**. The Multi-stop Trip screen will display, listing your destination point.



- d. Complete one of the following:

Note: Destination points added, updated or deleted after a multi-stop trip has commenced will not affect the current route until the Go button is pressed.

If you want to ...	Then ...
add another destination point Note: Destination points added after a multi-stop trip has commenced will not be included in the current route.	Select Add, then press OK . The Add to Trip screen will display. Select Address, then press OK . The Destination screen will display. Go to Step Three: Find the Area of Your Destination Point.
change the order of your destination points	Select a destination point to move using the 8-way toggle . Press OK to select from the list. The Preview screen will display. Select Move, then press OK . The Multi-stop Trip screen will display. Use the 8-way toggle to move the selected destination point to the correct position, then press OK .
calculate the route	Select Go, then press OK . The 3D Map screen will display the calculated route.
delete all destination points	select Clear, then press OK .
delete one destination point	Select a destination point to delete using the 8-way toggle . Press OK to select from the list. The Preview screen will display. Select Delete From Trip, then press OK . The Multi-stop Trip screen will display.
save the multi-stop trip as a Favourite	Select Save, then press OK . The New Favourite screen will display. Select Save, then press OK . The Favourite will save and the Multi-stop Trip screen will display.


To return to the Main Menu screen, press .

11.3 Skipping a Destination Point

You can modify a multi-stop trip at any time from the Multi-stop Trip screen, however if you have already commenced a trip, changes will not affect the current route:

Main Menu > Multi-stop Trip

To skip a destination point during a multi-stop trip, complete the following:


1. Press  to return to the Main Menu screen. The Main Menu screen will display.
2. Select Route Information, then press **OK**. The Route Information screen will display.
3. Select Skip Next Dest., then press **OK**. The next destination point will be skipped and the route recalculated to the following destination point.

11.4 Adding Message Locations to Multi-stop Trips

Message Locations are easily added to Multi-stop Trips for planning days, even weeks, of destination points. For more details on Message Locations, see Section 6.6.


- From the Main Menu select Multistop Trip.
- To create a New Multistop Trip select Clear.
- Select Add to add locations to the Multistop Trip.
- Selecting Messages will display the Message List, highlight a message, select **OK | Map | Add to Trip** to add the message location to a trip.
- Repeat steps 3 & 4 until the entire Multistop Trip has been planned.



12 Viewing your Route

Once a route has been calculated, you can view it in several ways. Press  to cycle through the screens.

12.1 2D Map Screen

The 2D Map screen is always oriented North and shows your current position (if a GPS fix is active) and surrounding street names. If a route has been calculated, the route and turns are highlighted.


To view the 2D Map screen, either select Map on the Main Menu screen then press **OK**, or when a route has been calculated, press  to cycle through the screens.

- Use the **8-way toggle** to move around the map.
- To display a smaller area in greater detail, press .
- To display a larger area in less detail, press .
- To display the cross-hair press **OK**. Press again to display the Pop-up menu.

Your next turn is highlighted in a different colour to future turns. The colour will depend on the theme you are using.

GPS strength indicator.




Your current position is marked with .

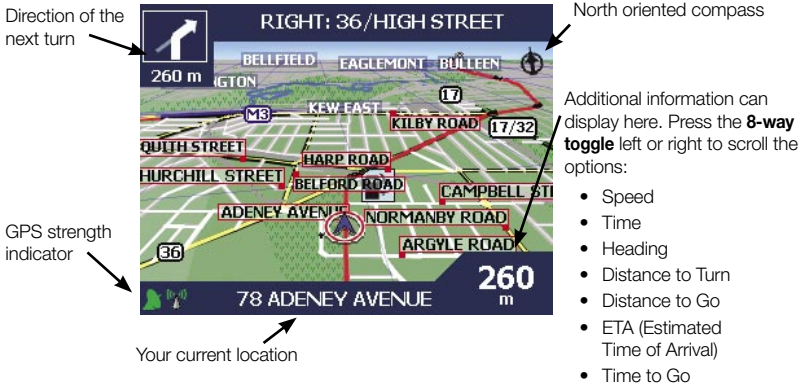
Displays one of the following options:



- Speed
- Time
- Heading
- Distance to Turn
- Distance to Go
- ETA (Estimated Time of Arrival)
- Time to Go

12.2 3D Map Screen

The 3D Map screen displays when a route is calculated, oriented to the travelling direction with an adjustable horizon.

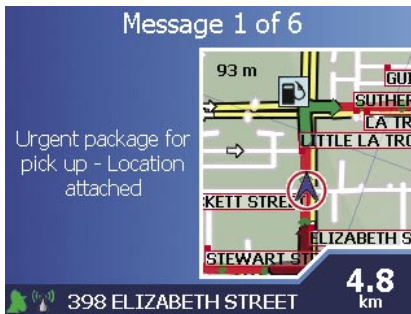
To view the 3D Map screen when a route has been calculated, press  to cycle through the screens.



- To adjust the viewing angle, press the **8-way toggle** up or down.
- To display a smaller area in greater detail, press .
- To display a larger area in less detail, press .
- To display the Go To Pop-up summary, press **OK**.

12.3 Message and Look Screen


The Message and Look screen allows you to skip through your messages while providing guidance feedback.



- When a route has been calculated, press  from the 3D Map screen.
- To cycle through the messages in your Message List, press the **8-way toggle** up or down.
- Follow similar instructions in Section 12.2 to display additional information.

12.4 Next Turn Screen

The Next Turn screen displays information that you need for the next turn, the direction of the turn and the distance to the turn. A route must have been calculated for this screen to be able to display. Access to this screen is controlled by the Settings - Display screen.

To view the Next Turn screen when a route has been calculated, press  to cycle through the screens.



The next instruction

Direction of next turn

Distance to the next turn

GPS strength indicator

Map of the next turn


Additional information can display here. Press the **8-way toggle** left or right to scroll the options:

- Speed
- Time
- Heading
- Distance to Turn
- Distance to Go
- ETA (Estimated Time of Arrival)
- Time to Go

Your current location

12.5 Next 4 Turns Screen

The Next 4 Turns screen displays the next four turns of your route, the turn direction, the street name and the distance to the turn. A route must have been calculated for this screen to be able to display. Access to this screen is controlled by the Settings - Display screen.



The next turn is highlighted at the top of the list.


Your current location

GPS strength indicator.

Distance to the next turn

Additional information can display here. Press the **8-way toggle** left or right to scroll the options:

- Speed
- Time
- Heading
- Distance to Turn
- Distance to Go
- ETA (Estimated Time of Arrival)
- Time to Go

To view the Next 4 Turns screen when a route has been calculated, press  to cycle through the screens.

12.6 Back-On-Track™ Automatic Rerouting

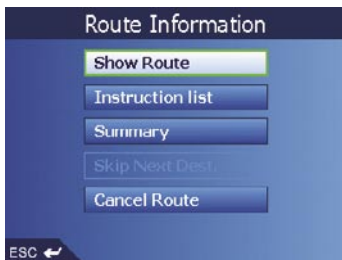
Your route is re-directed if you make a wrong turn. The ? symbol will display upper left of the 3D Map and Next Turn screens while the route re-calculates.

12.7 Route Information Screen

The Route Information screen provides information about your current route and lets you skip a trip destination point or cancel a route.

The screen is only available from the Main Menu when you are navigating a route:

Main Menu > Route Information

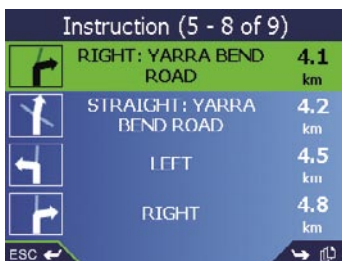



Show Route

Select Show Route, then press **OK** to display your entire route on the 2D Map screen.

Instruction List

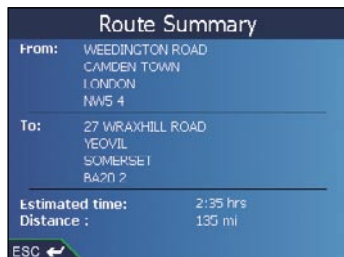
Select Instruction list, then press **OK** to display the Instruction List screen.



The Instruction List screen is similar to the Next 4 Turns screen except that it displays your entire route. Use  to cycle through the instruction list.

Summary

Select Summary, then press **OK** to display the Route Summary screen containing your From and To addresses, Estimated Time to arrival and the Distance remaining to your destination.



If you are navigating a multiple destination trip, the information displayed will relate to your next destination point.

Skip Next Destination

Select Skip Next Dest., then press **OK** to skip the next destination point of your trip.

Only available when navigating a multi-stop trip.



Cancel Route

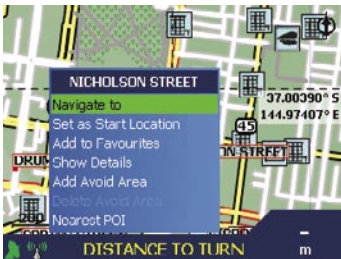
Select Cancel Route, then press **OK** to cancel the route.

13 The 2D Map Screen Pop-up Menu

The Pop-up menu allows you to access navigational functions from the 2D Map screen.

To display the Pop-up menu complete the following:

1. From the Main Menu, select Map, then press **OK**. The 2D Map screen will display.
2. Use the **8-way toggle** to move around the 2D Map screen.
 - To display a smaller area in greater detail, press .
 - To display a larger area in less detail, press .
3. Press **OK** to display the cross-hair on the 2D Map screen.
 - To remove the cross-hair press **ESC**.
4. Position the intersection of the cross-hair using the **8-way toggle**. Where the cross-hair intersects with a street, the street name will display at the bottom of the 2D Map screen.
5. Press **OK**. The Pop-up menu will display.



6. You can choose one of the following options:

Menu Option	Description
Navigate To	Calculates a route from your current location.
Set as Start Location	Sets the selected point as your departure point.
Add to Favourites	Displays the New Favourite screen for you to add the selected point as a Favourite.
Show Details	Displays the Address Details screen from which you can: <ul style="list-style-type: none"> - View details of the selected point - Add the point to your multi-stop trip. - Set the point as your destination point - Save the point as a Favourite.
Add Avoid Area	Adds an Avoid Area for you to size.
Delete Avoid Area	Deletes the selected Avoid Area.
Nearest POI	Displays the Select POI screen. Select the POI type, then the POI to navigate to.

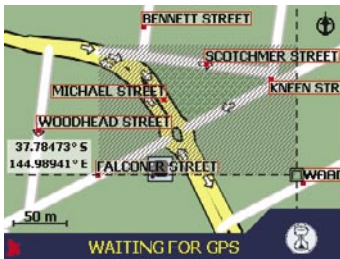
7. Press **OK** to confirm your selection.

14 Avoiding an Area

You can calculate a route that avoids a specified area on the map. Up to ten Avoid Areas can be added. Avoid Areas are displayed as shaded areas. If no alternative route around an Avoid Area exists, you will be routed through an Avoid Area.

Adding an Avoid Area

- From the Main Menu screen, select Map, then press **OK**. The 2D Map screen will display.
- Press **OK** and use the **8-way toggle** to place the cross-hair over the area that you want to avoid.
- Press **OK** to display the Pop-up menu.
- Select Add Avoid Area, then press **OK**. An Avoid Area is displayed.




- Set the Avoid Area to the correct size and position using the **8-way toggle**.
- Press **OK** to enable the Avoid Area.

Deleting an Avoid Area


- From the Main Menu screen, select Map, then press **OK**. The 2D Map screen will display.
- Press **OK** and use the **8-way toggle** to place the cross-hair over the Avoid Area that you want to delete.
- Press **OK** to display the Pop-up menu.
- Select Delete Avoid Area, then press **OK**. The Avoid Area is deleted.

Deleting All Avoid Areas

- From the Main Menu screen, select Preferences, then press **OK**.
- From the Preferences screen, select My Data, then press **OK**. The My Data screen will display.
- From the My Data screen, select Clear Data, then press **OK**. The Clear Data screen will display.
- Select Clear Avoid Areas, then press **OK**. When the warning dialog-box opens, select Yes, then press **OK**.
- To return to the Main Menu, press .

15 Route Demonstrator

The Route Demonstrator allows you to:

- Preview a route. During the preview, the  turns into a 'S' icon, reminding you that the demonstration is a 'S'imulation, not your actual progress on your journey.
- Plan and view a route without a GPS fix, such as when you are inside a building.

15.1 Select Departure Point

If you have a GPS fix, you do not need to select a departure point unless you want the demonstrated route to start elsewhere.

1. From the Main Menu screen, select Map. The 2D Map screen will display.
2. Press **OK** to display the cross-hair on the 2D Map screen.
3. Position the intersection of the cross-hair using the **8-way toggle**. Where the cross-hair intersect on a street, the street name will display at the bottom of the 2D Map screen.
4. Press **OK**. The Pop-up menu will display.
5. Select Set as Start Location, then press **OK**. The Pop-up menu will close.

15.2 Select Destination Point

Set a destination either by using the Destination screen (see Section 7) or by using the 2D Map screen Pop-up menu by completing the following:

1. Press **OK** to display the cross-hair on the 2D Map screen.
 2. Position the intersection of the cross-hair using the **8-way toggle**. Where the cross-hair intersect, with a street, the street name will display at the bottom of the 2D Map screen.
 3. Press **OK**. The Pop-up menu will display.
 4. Select Navigate To, then press **OK**. The Pop-up menu will close. The 3D Map screen will display the calculated route in Route Demonstrator mode.
- If you have selected the Route Demonstrator check box on the Routing screen, the Route Demonstrator will demonstrate the route.

15.3 Activate Route Demonstrator


1. From the 2D Map screen, then press **OK**. The crosshair will display.
2. Press **OK** again. The Pop-up Menu will display.
3. Select Start Demonstrator.

15.4 To Deactivate Route Demonstrator


To deactivate the current route demonstration:

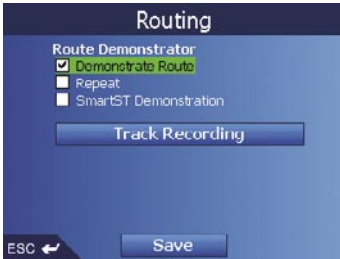
- From the 2D Map screen, press **OK** twice. The Pop-up Menu will display.
- Select Stop Demonstrator.

To deactivate all route demonstrations:

1. Press  to display the Main Menu screen.
2. From the Main Menu screen, select Preferences, then press **OK**.
3. From the Preferences screen, select Routing, then press **OK**. The Routing screen will display.



4. Press  twice. The Route Demonstrator preferences screen will display.



5. Clear the Demonstrate Route check box, then press **OK**.
6. Select Save, then press **OK**. Route Demonstrator will be disabled. The Main Menu screen will display.

16 Favourites and My Home

You can save up to 200 destinations as Favourites, one of which can be saved as My Home. My Home can be any designated Favourite, but we recommend that it is your home or other common destination

You can save a Favourite from the Preview screen after searching for an address, or from the Pop-up Menu on the 2D Map screen.

16.1 Saving a Favourite

1. Either search for an address using the Destination and Keyboard screens as described in Section 7-9, or create a multi-stop trip as described in Section 11, until the Preview screen is displayed.
2. Select Save, then press **OK**. The New Favourite screen will display.



3. To change the name of the Favourite, select the Name box, then press **OK**. The Enter text screen will display.



- Use the **8-way toggle** to move around the Enter text screen.
- To select a character, press **OK**.
- To delete a character, press **ESC**; hold **ESC** to delete the line.
- To display the number/symbol Enter text screen, select 123, then press **OK**.
- To display the alternate Enter text screen, press **⊕**, or select Alt, then press **OK**.
- To display the alphabet Enter text screen, press **⊖**, or select ABC, then press **OK**.
- After you have entered a name for the Favourite, select Enter, then press **OK**. The New Favourite screen will display.

4. Complete one of the following:

- To save as a favourite, select Save as Favourite, then press **OK**. The Favourite is saved. The Go To screen will display.
- To save as My Home, select Save as My Home, then press **OK**. The Favourite is saved as My Home. The Go To screen will display.

16.2 Saving a Favourite from the 2D Map Screen

- From the Main Menu, select Map, then press **OK**. The 2D Map screen will display.
- Press **OK** to display the cross-hair.
- Position the cross-hair on a destination using the **8-way toggle**. Where the cross-hair intersect on a street, the street will highlight and the street name will display.
- Press **OK**. The Pop-up menu will display.



5. Select Add to Favourites, then press **OK**. The New Favourite screen will display.



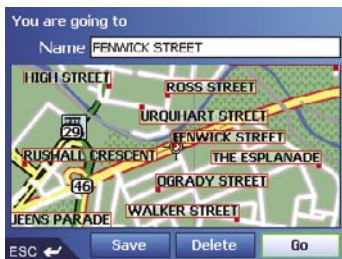
6. To change the name of the Favourite, select the Name box, then press **OK**. The Enter text screen will display.



- Use the **8-way toggle** to move around the Enter text screen.
 - To select a character, press **OK**.
 - To delete a character, press **ESC**; hold **ESC** to delete the line.
 - To display the number/symbol Enter text screen, select 123, then press **OK**.
 - To display the alternate Enter text screen, press **+ =**, or select Alt, then press **OK**.
 - To display the alphabet Enter text screen, press **ABC**, or select ABC, then press **OK**.
 - After you have entered a name for the Favourite, select Enter, then press **OK**. The New Favourite screen will display.
7. Complete one of the following:
- To save as a favourite, select Save as Favourite, then press **OK**. The Favourite is saved. The 2D Map screen will display.
 - To save as My Home, select Save as My Home, then press **OK**. The Favourite is saved as My Home. The 2D Map screen will display.

16.3 Editing the Name of the Favourite

1. From the Main Menu, select Go To, then press **OK**.
2. From the Go To screen, select Favourites, then press **OK**. The Favourite screen will display.
3. Select a Favourite to edit using the **8-way toggle**, then press **OK**. The Preview Favourite screen will display.



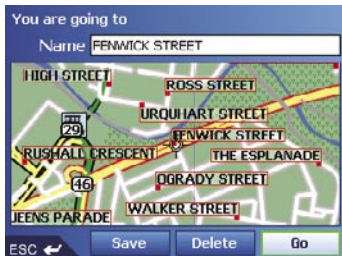
4. Select the Name box, then press **OK**. The Enter text screen will display.



- Use the **8-way toggle** to move around the Enter text screen.
 - To select a character, press **OK**.
 - To delete a character, press **ESC**; hold **ESC** to delete the line.
 - To display the number/symbol Enter text screen, select 123, then press **OK**
 - To display the alternate Enter text screen, press **⊕**, or select Alt, then press **OK**.
 - To display the alphabet Enter text screen, press **⊖**, or select ABC, then press **OK**.
 - After you have entered a name for the Favourite, select Save, then press **OK**. The New Favourite screen will display.
5. Complete one of the following:
- To save as a favourite, select Save as Favourite, then press **OK**. The Favourite is saved. The Favourite screen will display.
 - To save as My Home, select Save as My Home, then press **OK**. The Favourite screen will display.

16.4 Deleting a Favourite

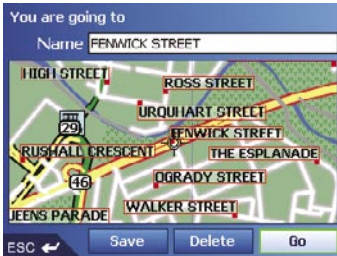
1. From the Main Menu, select Go To, then press **OK**.
2. From the Go To screen, select Favourites, then press **OK**. The Favourite screen will display.
3. Select a Favourite to delete using the **8-way toggle**, then press **OK**. The Preview Favourite screen will display.



4. Select Delete, then press **OK**. A Warning dialogue box will display asking for confirmation to delete the Favourite.
5. Select Yes, then press **OK**. The Favourite is deleted. The Favourite screen will display.

16.5 Navigating to a Favourite

1. From the Main Menu, select Go To, then press **OK**.
2. From the Go To screen, select Favourites, then press **OK**. The Favourite screen will display.
3. Select a Favourite using the **8-way toggle**, then press **OK**. The Preview Favourite screen will display.



4. Select Go, then press **OK**. The route is calculated and displayed on the 3D Map screen.

16.6 Navigating to My Home

1. From the Main Menu, select Go To then press **OK**.
2. From the Go To screen, select My Home then press **OK**. The route is calculated and displayed on the 3D Map screen.

17 Preferences

You can modify the following preferences to suit your needs.


17.1 Screen Brightness

1. Press and hold the Zoom/Brightness button  to display the Brightness scale.
2. To increase screen brightness, press +. To decrease screen brightness, press -.
Warning: The M-Nav can heat up when the Brightness scale enters the red zone. To reduce the risk of over-heating, avoid red brightness levels where possible.

17.2 Volume

1. Press and hold the Volume button  to display the Volume scale.
2. To increase volume, press +. To decrease volume, press -.

17.3 Routing

1. From the Main Menu, select Preferences. Press **OK**.
2. From the Preferences screen, select Routing. The first of three Routing screens will display.
3. Press  to move through the Routing screens.



3. Complete one of the following:

If you want to...	Then...
change the Route Type	<p>move the Route Type slider towards Quickest to give more weighting to the fastest time when calculating a route.</p> <p>move the Route Type slider towards Shortest distance to give more weighting to the shortest distance when calculating a route.</p>
change the Preference for motorways	<p>move the Preference for motorways slider towards Less often to use roads other than motorways where possible when calculating a route.</p> <p>move the slider towards More often to use motorways where possible when calculating a route.</p>
change the Preference for urban roads	<p>move the Preference for urban roads slider towards Less often to use roads other than urban roads where possible when calculating a route.</p> <p>move the Preference for urban roads slider towards More often to use urban roads where possible when calculating a route.</p>
revert to default settings	<p>select Set default, then press OK on the first Routing screen. This will restore default setting for Route Type, Preference for motorways and Preference for urban roads.</p>
avoid toll roads	<p>select the Avoid toll roads check box.</p>
avoid unsurfaced roads	<p>select the Avoid unsurfaced roads check box.</p>
avoid ferries	<p>select the Avoid ferries check box.</p>
receive a warning if your route includes toll roads	<p>select the Toll roads check box to display a warning message at the start of your trip, if your route includes toll roads.</p>
receive a warning if your route includes unsurfaced roads	<p>select the Unsurfaced roads check box to display a warning message at the start of your trip, if your route includes unsurfaced roads.</p>
receive a warning if your route includes ferries	<p>select the Ferries check box to display a warning message at the start of your trip, if your route includes ferries.</p>
enable the Route Demonstrator	<p>select the Demonstrate Route check box. This allows you to plan and view a route without a GPS fix. See Section 15 for more information.</p>
enable the Route Demonstrator to play repeatedly	<p>select the Repeat check box.</p>
enable SmartST Demonstration to be played	<p>select the SmartST Demonstration check box. The demonstration will navigate between the first and second Favourite after a 10-second delay.</p>
enable Track Recording (only to be used if required by Navman Customer Support)	<p>contact Navman Customer Support, as we recommend this feature be used only under the supervision of a Navman technician.</p>

4. Select Save, then press **OK**. The Main Menu screen will display.

17.4 Language

1. From the Main Menu, select Preferences, then press **OK**.
2. From the Preferences screen, select Language, then press **OK**. The Language screen will display.




3. To change your language, including the voice scheme used for voice-guidance during navigation, select your preferred voice scheme from the Language box using the left and right sides of the **8-way toggle**.
4. To enable Voice guidance instructions during navigation, select the Enable check box. Press **OK**.
5. To switch the Keyboard Layout between Qwerty and standard alphabetical, select your choice and press **OK**.

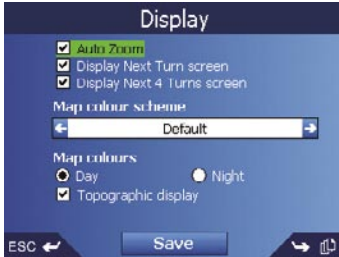


6. Select Save, then press **OK**. The Main Menu screen will display.

17.5 Maps

Display

1. From the Main Menu, select Preferences, then press **OK**.
2. From the Preferences screen, select Maps, then press **OK**.
3. From the Maps screen, select the Display option. The first of two Display screens will display. Press  to move through the Display screens.




4. Complete the following:

If you want to...	Then...
enable Auto Zoom during navigation	select the Auto Zoom check box. If selected, the 2D Map and 3D Map screen will automatically zoom in or out, depending on your speed, to allow optimal route-viewing.
enable access to the Next Turn screen	select the Display Next Turn screen check box.
enable access to the Next 4 Turns screen	select the Display Next 4 Turns screen check box.
change the colour scheme	select your preferred scheme from the Map colour scheme box using the left and right side of the 8-way toggle .
improve screen contrast in light or dark conditions	under Map colours, select either Day or Night.
display a topographical map on the 2D Map and 3D Map screens	select the Topographic display check box.
display grid lines on the 2D Map and 3D Map screens	select the Display Map Grid check box.
display a north-pointing compass on the 2D Map and 3D Map screens	select the Display Compass on Map check box.
display "no entry" icons on "no entry" roads on the 2D Map and 3D Map screens	select the Display no entry roads check box.

5. Select Save, then press **OK**. The Main Menu screen will display.

Internal Memory

- From the Main Menu, select Preferences, then press **OK**.
- From the Preferences screen, select Maps, then press **OK**.
- From the Maps screen, select Internal memory. The Maps - Internal memory screen will display.
- To activate a map, use the **8-way toggle** to select the desired map, then press **OK** to select the map check box

Note: There may be more than one page of map listings, depending on the number of maps installed. To view additional pages of map listings, scroll down using the **8-way toggle**, or press .

- Repeat step 4 until all required maps are selected.
- Select Save, using the right side of the **8-way toggle**, then press **OK**. The Main Menu screen will display.

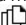
Points of Interest (POIs)

Points of Interest in a region are grouped into types. This function allows you to select the types you need. For example, you may be only interested in entertainment venues and want to disable other POI types such as schools.

1. From the Main Menu, select Preferences, then press **OK**.
2. From the Preferences screen, select Maps, then press **OK**.
3. From the Maps screen, select Points of Interest. The Points of Interest screen will display.



4. You may either choose to display (or hide) icons of all POI types on the 2D Map and 3D Map screens, or to selectively display desired icons chosen from the list of POI types.
 - To display all POI icons (i.e., icons from all POI types) on the 2D Map and 3D Map screens, select Turn all on, then press **OK**. To display no icons, select Turn all off, then press **OK**.
 - To select a specific POI type icon for display, use the **8-way toggle** to select the desired POI type, then press **OK** to select the check box. Repeat until all desired POI types are selected.

Note: There may be more than one page of POI types, depending on the installed maps. To view additional pages of POI types, scroll down using the **8-way toggle**, or press .

5. On any page of POI types, select Save, using the right side of the **8-way toggle**, then press **OK**. The Main Menu screen will display.

17.6 Alerts

Active POIs

The Active POI settings allow you to set warning chimes and visual warnings for custom POIs that will activate within a chosen distance-radius of your location. For example, a warning chime will sound or a visual warning will display when an active POI is within 150 ft, but not necessarily on your route.

1. From the Preferences menu, select Safety Alerts, then press **OK**. The Safety Alerts screen will display.
2. On the Safety Alerts screen, select Active POI, then press **OK**. The Select Active POI screen will display.
3. Use the **8-way toggle** to select a custom POI type, then click **OK**. The POI Activation Settings screen will display.

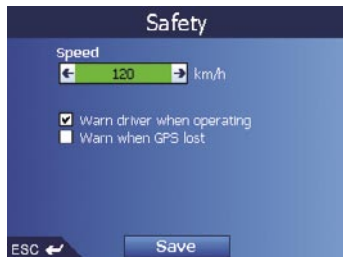


4. Select the Active check box to activate the POI.
5. Modify the settings as required:
 - To enable a warning chime when the POI is in close proximity, select the Audio warning check box.
 - To enable a visual warning when the POI is in close proximity, select the Visual warning check box.
 - Move the Distance to POI slider to select the distance at which the warnings will activate.
6. Use the **8-way toggle** to select Save, then press **OK**. The Main Menu screen will display.

Speed

The Safety settings allow you to set safety-related warnings.

1. From the Preferences menu, select Safety Alerts, then press **OK**. The Safety Alerts screen will display.
2. On the Safety Alerts screen, select Safety, then press **OK**. The Safety screen will display.



3. Complete the following:

If you want to...	Then...
enable a warning chime when travelling at or above a designated speed	select the speed in the Speed box using the left and right buttons on the 8-way toggle . Select Save, then press OK . The Safety alerts screen will display. Note: The GPS signal alert will be active when a Speed alert is selected.
enable a visual warning if the Main Menu screen is accessed in a moving vehicle	select the Warn driver when operating check box, then press OK .
enable a warning chime and visual warning when the GPS signal has been lost	select the Warn when GPS lost check box, then press OK . Note: The GPS signal alert will be active when a Speed alert is selected.


4. Use the **8-way toggle** to select Save, then press **OK**. The Main Menu screen will display.

17.7 My Data

My Points of Interest (My POI)

Custom Points of Interest (POIs) are pre-installed and listed on the My POIs screen.

1. From the Main Menu, select Preferences. Press **OK**.
2. From the Preferences screen, select My Data. Press **OK**.
3. From the My Data screen, select My POI. Press **OK**. The My POI screen will display.
4. Use the **8-way toggle** to select the POI file or files you require. Press **OK** to select the POI check box


Note: There may be more than one page of POI types, depending on the number of maps installed. To view additional pages of POI types, scroll down using the **8-way toggle**, or press .

5. Use the **8-way toggle** to select Save, then press **OK**. The Main Menu screen will display.

Clear Data

1. From the Main Menu screen, select Preferences. Press **OK**. The Preferences screen will display.
2. From the Preferences screen, select My Data. Press **OK**. The My Data screen will display.
3. From the My Data screen, select Clear Data, then press **OK**. The Clear Data screen will display.
4. Complete the following:

If you want to...	Then...
clear recent destinations	select Clear Recent, then press OK . When the warning dialog-box opens, select Yes, then press OK .
clear favourites	select Clear Favourites, then press OK . When the warning dialog-box opens, select Yes, then press OK . Note: This option will not clear My Home.
clear avoid areas	select Clear Avoid Areas, then press OK . When the warning dialog-box opens, select Yes, then press OK .

5. Press  to return to the Main Menu screen.

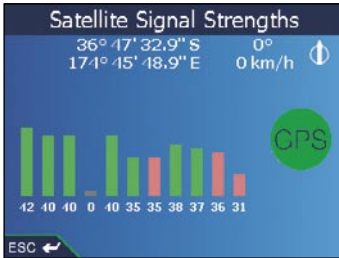
17.8 More Preferences

GPS Status

Signals are transmitted by Global Positioning System (GPS) satellites orbiting the Earth. The Satellite Signal Strengths screen provides a visual representation of the information being received.

Latitude and longitude are displayed, along with a north-pointing compass, the heading in degrees and ground speed. The strength of each satellite is displayed on a bar chart.

From the Main Menu screen, select Preferences > More Preferences > GPS status. The Satellite Signal Strengths screen will display.



The circle on the right side of the screen displays green when there is a valid fix (2D or 3D), and red when no fix is available. A fix will be obtained more quickly if the vehicle is stationary than if it is moving.

The satellites available from your current position are shown as grey, red and green coloured bars:

Bar Colour	Description
Grey	No signal at all
Red	A valid signal, but not being used to fix your position
Green	A valid signal being used to fix your position

OnlineAVL Status

The GPS Status screen also allows access to the OnlineAVL Status screen. This is a diagnostic tool you can use to monitor several internal settings, and may be useful if you encounter trouble with e M-Nav's normal operation.

- From the GPS Status screen, press .

Measurements

1. From the Main Menu screen, select Preferences. Press **OK**. The Preferences screen will display.
2. From the Preferences screen, select More Preferences. Press **OK**. The second Preferences screen will display.
3. On the second Preferences screen, select Measurements, then press **OK**. The Measurements screen will display.
4. Complete the following:

If you want to...	Then...
change the Position format	select either the Decimal degrees or the Degrees, minutes, seconds option.
change the local time offset	select the offset from the Coordinated Universal Time (UTC) for your location from the Local time offset box using the lefthand and righthand buttons of the 8-way toggle . Next, select either the 12 Hour or 24 Hour option for time-format.
choose distance units*	select either the kilometres or miles option.

5. Use the **8-way toggle** to select Save, then press **OK**. The Main Menu screen will display.


* Only available when UK English or US English language is selected.

Startup

1. From the Main Menu screen, select Preferences. Press **OK**. The Preferences screen will display.
2. From the Preferences screen, select More Preferences. Press **OK**. The second Preferences screen will display.
3. On the second Preferences screen, select Startup, then press **OK**. The Startup screen will display.



4. Complete the following:

If you want to...	Then...
display the Tutorial on startup	select the Tutorial screen check box.
display the Language Selection screen on startup	select the Language selection screen check box.
view the Tutorial	select Show Tutorial. The first Tutorial screen will display. Press  repeatedly to cycle through the Tutorial screens.

5. Use the **8-way toggle** to select Save, then press **OK**. The Main Menu screen will display.

Appendix A: Power Management

The M-Nav 650 has 3 power operation states.

On	The display will be showing information. The power LED is on. Current drawn may be several hundreds of milliamps.
Stand-by Mode	In this mode the unit is operational but is attempting to save power. The display will appear blank. The power LED is on. Current drawn will be in the tens of milliamps.
Off	The unit is powered down. Both the display and the power LED is off. There will only be a small current draw.

Powering Up from Off

While Off the M-Nav buttons are inactive, i.e. the Power button does not work. The unit turns On when it receives power from the Qube, which receives power from starting the vehicle's ignition.

At power up, the M-Nav detects the ignition state.

- If the Qube reports the ignition state ON, the M-Nav turns on.
- If the Qube reports the ignition state is OFF (the Qube is running from the vehicle battery), the M-Nav enters Stand-by mode.

Powering Up from Standby

The M-Nav will turn On from Standby Mode if:

- Any button on the unit is pressed.
- The unit receives a text message.

Powering Down from On

The M-Nav will enter Standby Mode if:

- If the ignition state is off and no key has been pressed for more than 60 seconds.
- The power button is pressed for more than 3 seconds.

The M-Nav will turn Off if:

- The Qube is not functioning.

M-Nav 650 Power Summary

- | | |
|---|--|
| <ul style="list-style-type: none"> • Ensure the Qube is receiving power from the vehicle • Ensure the Qube is connected to the M-Nav 650 (LED ON) | <ul style="list-style-type: none"> • Press any button on the M-Nav 650, OR; • A text message is received |
|---|--|

Off

Stand-by Mode

ON

- | | |
|---|--|
| <ul style="list-style-type: none"> • Disconnect Qube from unit, OR • Qube no longer has power (LED OFF) | <ul style="list-style-type: none"> • Press  for 3 seconds, OR; • Ignition state is off; no key pressed for more than 60 seconds |
|---|--|

Appendix B: Street Types

Note: Belgium and Switzerland each list street types and their abbreviations in three languages.

Country	Street Type	Abbreviation
Austria	BOULEVARD CHAUSSEE PLATZ STRASSE	BVD CH PL STR
Belgium (Dutch)	BAAN BERG DREEF LAAN MARKT PARK PLEIN SQUARE STEENWEG STRAAT	BN BG DR LN MKT PK PL SQ STWG STR
Belgium (French)	AVENUE BOULEVARD CHAUSSEE IMPASSE MONT MONTAGNE PLACE ROUTE ROUTE NATIONAL RUE SQUARE	AVE BVD CH IMP MT MT PL RTE RN R. SQ
Belgium (German)	CHAUSSEE PLATZ STRASSE	CH PL STR
Finland	GATAN GATE GATA VÄGEN VÄG	GT GT GT V. V.
France	ALLEE AVENUE BOULEVARD CHAUSSEE DOMAINE FAUBOURG IMPASSE MONT MONTAGNE PASSAGE PLACE QUARTIER ROND-POINT ROUTE ROUTE NATIONALE RUE SQUARE TRAVERSE	ALL AVE BVD CH DOM FG IMP MT MT MT PAS PL QU RPT RTE RN R. SQ TRA

Country	Street Type	Abbreviation
Germany	BOULEVARD CHAUSSEE PLATZ STRASSE	BVD CH PL STR
Ireland	AVENUE BOULEVARD CENTRE CRESCENT PLACE ROAD ROUTE SQUARE STREET YARD	AVE BVD CTR CR PL RD RTE SQ ST YD
Italy	CONTRADA CORSO FRAZIONE LARGO PIAZZA PIAZZALE STRADA STATALE SUPERSTRADA VIA VIALE	C.DA C.SO FR LGO PZA P.LE SS SS V VL
Luxembourg	ALLÉE AVENUE BOULEVARD CHAUSSÉE DOMAINE FAUBOURG IMPASSE MONT MONTAGNE PASSAGE PLACE QUARTIER ROND-POINT ROUTE ROUTE NATIONALE RUE SQUARE TRAVERSE	ALL AVE BVD CH DOM FG IMP MT MT PAS PL QU RPT RTE RN R. SQ TRA
Netherlands	BOULEVARD DIJK DWARSSTRAAT DWARSWEG GRACHT KADE KANAAL LAAN LEANE LOANE PARK PLANTSOEN PLEIN SINGEL STRAAT STRIJTE STRAATWEG WEG	BVD DK DWSTR DWWG GR KD KAN LN LN LN PK PLNTS PLN SNGL STR STR STRWG WG

Country	Street Type	Abbreviation
Norway	GATA GATE PLASSEN VEGEN VEI	GT GT PL V. V.
Portugal	AVENIDA BAIRRO CALÇADA CAMINHO ESTRADA LARGO LARGUINHO PRAÇA QUARTO QUARTA QUINTA RUA SÃO SANTA SANTO	AVE BA CC CAM EST LGO LARG PR QT QT QU R. S. S. S.
Spain	AVENIDA CALLE CALLEJÓN CAMINO CARRETERA GLORIETA PASEO PLAZA RAMBLA RONDA	AVE C/ CJ CM CR G P.O P. RBLA RD
Switzerland (German)	BOULEVARD CHAUSSEE PLATZ STRASSE	BVD CH PL STR
Switzerland (French)	AVENUE CHAUSSEE IMPASSE MONT MONTAGNE PLACE QUARTIER ROUTE ROUTE NATIONAL RUE SQUARE	AVE CH IMP MT MT PL QU RTE RN R. SQ
Switzerland (Italian)	CONTRADA CORSO FRAZIONE LARGO PIAZZA PIAZZALE VIA VIALE	C.DA C.SO FR LGO P.ZA P.LE V. VL
United Kingdom	AVENUE BOULEVARD CENTRE CRESCENT	AVE BVD CTR CR

Contacts

Navman NZ Limited

7-21 Kawana Street, Northcote
 PO Box 68 155 Newton
 Auckland
 New Zealand
 Tel: +64 (0)9 481 0500
 Fax: +64 (0)9 480 3176
 Customer Support: fleet.support@navman.com
 Website: www.navman.com

Navman Wireless Australia

Navman Australia Pty. Ltd
 Suite 2, 408 Victoria Rd
 PO Box 479
 Gladesville NSW 2111
 AUSTRALIA
 Tel: +61 2 9879 9000
 Fax: +61 2 9879 9001
 Website: www.navman.com

Navman Wireless UK

Innovation Centre 2
 Keele University Science Park
 Keele, Staffordshire, ST5 5NH
 UNITED KINGDOM
 Tel: +44 (0) 1782 55 79 50
 Fax: +44 (0) 1782 55 79 79
 Email: info@navmanwireless.co.uk
 Website: www.navmanwireless.co.uk

Navman Wireless NZ

7-21 Kawana St, Northcote
 PO Box 68 155 Newton
 Auckland
 New Zealand
 Customer Support and Info:
 0800 GPS FLEET (0800 477 353)
 Email: wirelessnzsupport@navman.com
 Website: www.navman.com

NAVMAN DISCLAIM ALL LIABILITY FOR ANY USE OF THIS PRODUCT IN A WAY THAT MAY CAUSE ACCIDENTS, DAMAGE OR VIOLATE THE LAW.

Compliance

This device complies with part 15 of the FCC Rules. Operation is subject to the following two conditions: (1) This device may not cause harmful interference, and (2) this device must accept any interference received, including interference that may cause undesired operation.

Copyright

© 2005 Navman NZ Limited. Navman is a registered trademark of Navman NZ Limited.

All rights reserved.

SmartST, Drive-Away and Back-On-Track are trademarks of Navman NZ Limited. All rights reserved.

Microsoft Windows 98 SE, ME, 2000 or XP SP1, Microsoft Internet Explorer are registered trademarks of Microsoft Corporation.

Adobe Reader is a registered trademark of Adobe Systems Incorporated. All rights reserved.

All other trademarks and registrations are the property of their respective owners.

Published in New Zealand.

MN000330A

Notes

MN000285A

Free Manuals Download Website

<http://myh66.com>

<http://usermanuals.us>

<http://www.somanuals.com>

<http://www.4manuals.cc>

<http://www.manual-lib.com>

<http://www.404manual.com>

<http://www.luxmanual.com>

<http://aubethermostatmanual.com>

Golf course search by state

<http://golfingnear.com>

Email search by domain

<http://emailbydomain.com>

Auto manuals search

<http://auto.somanuals.com>

TV manuals search

<http://tv.somanuals.com>