

Empowered by Innovation

**NEC**



***XN120***

**UserProManual**

1.0

This manual has been developed by NEC Infrontia LTD It is intended for the use of its customers and service personnel, and should be read in its entirety before attempting to install or program the system. Any comments or suggestions for improving this manual would be appreciated. Forward your remarks to:

**NEC Infrontia LTD**  
75 Swingbridge Road, Loughborough Leicestershire.

**tech\_support@necinfrontia.co.uk**

**www.necinfrontia.co.uk**

Nothing contained in this manual shall be deemed to be, and this manual does not constitute, a warranty of, or representation with respect to, any of the equipment covered. This manual is subject to change without notice and NEC Infrontia has no obligation to provide any updates or corrections to this manual. Further, NEC Infrontia also reserves the right, without prior notice, to make changes in equipment design or components as it deems appropriate. No representation is made that this manual is complete or accurate in all respects and NEC Infrontia shall not be liable for any errors or omissions. In no event shall NEC Infrontia be liable for any incidental or consequential damages in connection with the use of this manual. This document contains proprietary information that is protected by copyright. All rights are reserved. No part of this document may be photocopied or reproduced without prior written consent of NEC Infrontia

©2006 by NEC Infrontia LTD

---

**Document History**

Revision 1.0 September 2006

First Release



## Table of Contents

---

<b>Connecting to the System</b> .....	<b>1</b>
<b>EXIFU Card and Connections for PCPro</b> .....	<b>2</b>
Ethernet Connection .....	2
<b>Local LAN (Ethernet) Connection</b> .....	<b>4</b>
<b>Common Buttons within UserPro</b> .....	<b>5</b>
<b>Using UserPro</b> .....	<b>6</b>

# Table of Contents

---

### Connecting to the System

In addition to the system phone programming, the system provides the ability to use a PC to access system programming. The HTML-based UserPro allows you to:

- Edit the telephone system programming options from a remote location.  
*The UserPro application applies the changes as soon as the APPLY or OK icon is clicked.*

#### UserPro PC Requirements

- CPU: Pentium III 600 MHz equivalent or higher
- Monitor Resolution: 800 x 600 pixels or higher
- Mouse
- Microsoft Windows 2000/XP
- Internet Browser: Internet Explorer 6.0 or higher or Netscape 6.0 or higher
- Network Interface Card (NIC) (depending on connection type)

The browser settings should allow all Cookies and have Scripting/Active Scripting enabled.

**Internet Explorer:** Click *Tools-Internet Options-Security-Internet or Local Intranet* (depending on your connection)-*Custom Level*. Set *Allow Cookies That Are Stored On Your Computer* and *Allow Per-Session Cookies (Not Stored)* to “Enable”. Set *Active Scripting* to “Enable”.

**Netscape:** Click *Edit-Preferences*. Under *Privacy & Security*, set *Cookies* to “Enable All Cookies”. Under *Advanced-Scripts & Plugins* the checkbox for *Enable JavaScript for Navigator* should be checked.

## Connecting to the System

---

The following changes must be made in order to connect to the system.

**With the telephone system set at default (Program 10-12-01 = IP Address 172.16.0.10 and Program 10-13-01 = 0 [DHCP Server disabled]):**

1. The network settings on the PC connecting to the telephone system must be changed. Set the IP address to 172.16.0.11 (172.16.0.12, 172.16.0.13, etc would also be acceptable) and change the subnet mask to 255.255.0.0.

**With the telephone set to use the built-in DHCP Server (Program 10-12-01 = IP Address 172.16.0.10 and Program 10-13-01 = 1 [DHCP Server enabled]):**

1. The network settings on the PC connecting to the telephone system must be set to obtain an IP address automatically.

*The location of the IP setting depends on the Windows version being used, but for example, with Windows XP you would access these settings by clicking:*

*START-SETTINGS-NETWORK CONNECTIONS-Right mouse click on LOCAL AREA CONNECTION-Select PROPERTIES-Click on INTERNET PROTOCOL (TCP/IP)-Click PROPERTIES-Select the GENERAL tab if not already selected.*

### Connecting to the telephone System

In order to use UserPro, the telephone system must be connected to the PC as shown below.

For local connection you can connect via Ethernet either through a hub or with a cross-over cable connected directly to the system, a USB cable or a serial cable.

For remote connection you can connect your PC to an ISDN Terminal Adapter and make a dial up connection to the telephone system.

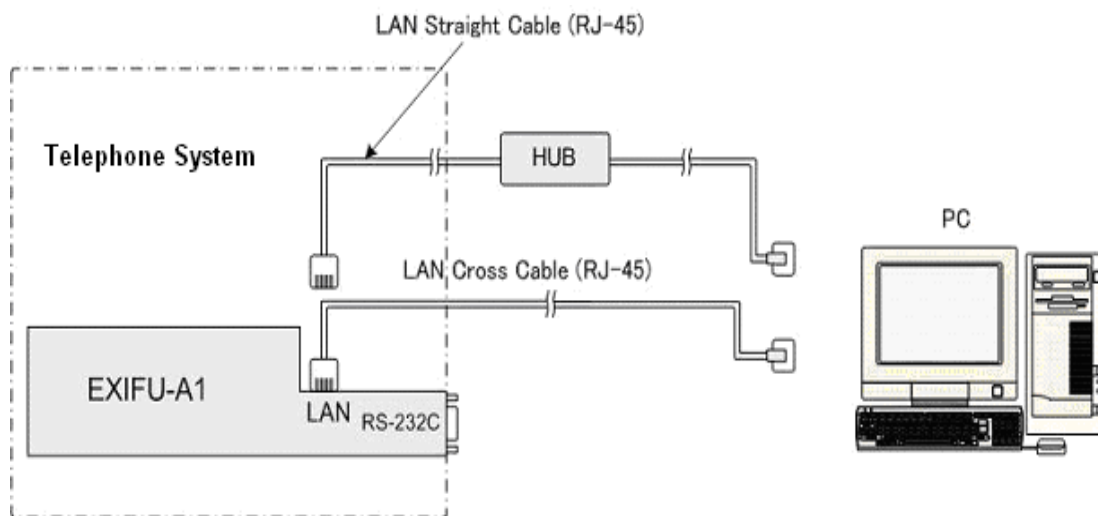
## EXIFU Card and Connections for PCPro

### Ethernet Connection

You will need the EXIFU-A card installed in the system.

Connect the Ethernet socket of the EXIFU-A card to a NIC card on your PC. This can be either via LAN or directly via a LAN cross cable.

You will need to setup the NIC in your PC before you can communicate with the system.





### LAN Cable

Straight through RJ45 patch cable.

Pin	Pin
1	1
2	2
3	3
6	6

### LAN Cross Cable

RJ45 cable with cross over Tx and Rx.

Pin	Pin
1	3
2	6
3	1
6	2

## Local LAN (Ethernet) Connection

---

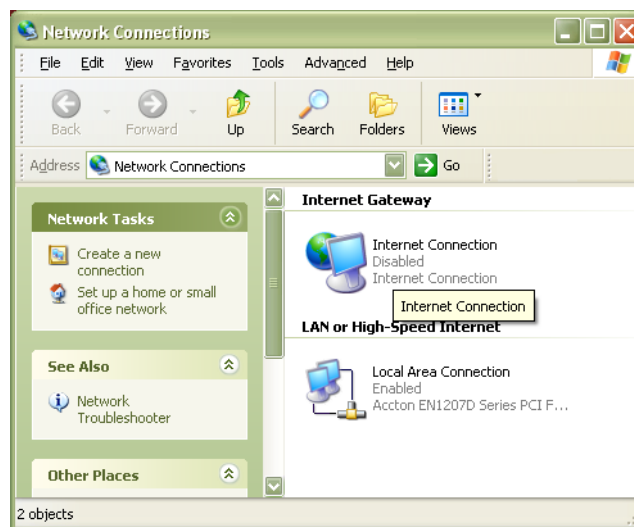
### Local LAN (Ethernet) Connection

When connection to the telephone system is made using UserPro via a LAN connection, an IP address and the subnet type must be assigned to the PC. The IP address and subnet mask are determined by the telephone system in Programs 10-12-01 and 10-12-02.

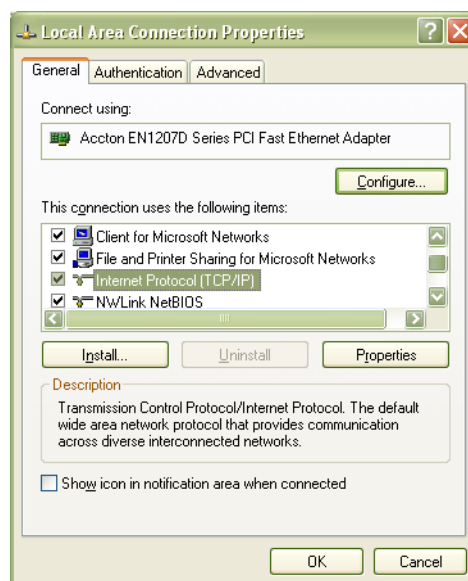
*If the PC is already connected to a network and you are connecting to the NTCPU through a hub or router, please check with your network manager to determine the IP address that should be used.*

The following information is based on a stand-alone PC connected to the telephone system, with the telephone system using the default settings for the IP address and subnet mask (Program 10-12-01: IP Address 172.16.0.10 / Program 10-12-02: Subnet Mask 255.255.0.0).

1. To change the TCP/IP information OF YOUR PC, click START + SETTINGS + NETWORK CONNECTIONS. The following window appears.



2. Right-click on the LOCAL AREA CONNECTION icon and click on PROPERTIES.



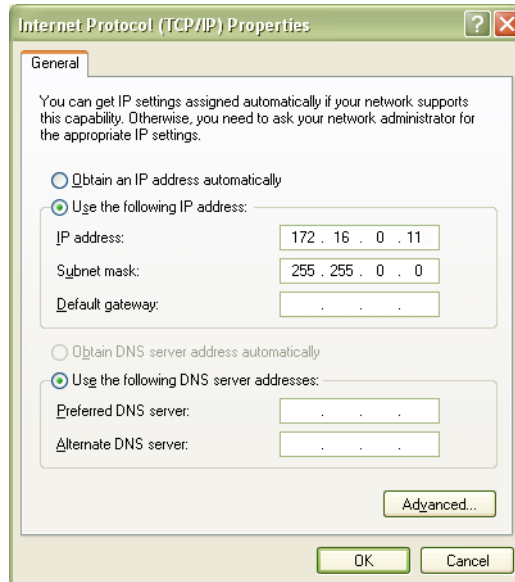
3. In the list of items, click on the INTERNET PROTOCOL (TCP/IP) and then click on PROPERTIES.

## Local LAN (Ethernet) Connection

- In the Internet Protocol (TCP/IP) Properties window that appears, click on USE THE FOLLOWING IP ADDRESS button and enter the following:

IP Address: 172.16.0.11 (172.16.0.12, 172.16.0.13 etc would also be acceptable)

Subnet Mask: 255.255.0.0



- Click OK and close the INTERNET PROTOCOL window.
- Click OK and close the LOCAL AREA CONNECTION PROPERTIES window.
- Close the NETWORK CONNECTIONS window.

## Common Buttons within UserPro

Common buttons		
	Ok	Sets recent changes then exits the feature.
	Apply	Sets recent changes.
	Cancel	Discards recent changes then exits the feature.
	Copy	Copy settings from an extension, trunk, etc. to another.
	Help	Displays additional help for the active feature or PRG.
	Search	Search for an item within the active feature or PRG.
	Page Up	Scrolls up one screen within the active feature or PRG.
	Page Down	Scrolls down one screen within the active feature or PRG.

### Using UserPro

The WebPro software is installed on the NTCPU PCB - there is no separate software installation. This means that when the telephone system software is updated, the UserPro software is updated as well.

With either Internet Explorer or Netscape Navigator installed:

1. Open the internet browser application. When using a remote ISDN dial up connection, Local USB connection or Local Serial connection you must first connect to the telephone system using the dial-up connection. If not already connected, click on START + SETTINGS + NETWORK CONNECTIONS + select the dial up connection to be used to connect to the telephone system.

2. Enter the IP address of the Aspire system. This address is selected based on the type of connection to the Aspire.

Local LAN (Ethernet)	172.16.0.10	This setting is defined in Program 10-12-01 and can be changed.
----------------------	-------------	---

3. When the connection to the system is made, you'll see the opening page requesting a user name and password. The default settings are:

User Name	Password
USER1	1111 (UA Level)
(extension number)	1111 (UB Level)

*The passwords are case-sensitive and must be entered as shown.*

4. After making changes in a window, click on either the APPLY or OK icon to accept the changes. The system is immediately updated.
5. When you wish to exit UserPro, you MUST click LOGOUT from the Home page in order to log out of the system.

#### Notes:

- The UserPro software provides a Help system if you experience difficulty in using the program. Simply press the 'F1' key.

## UA level

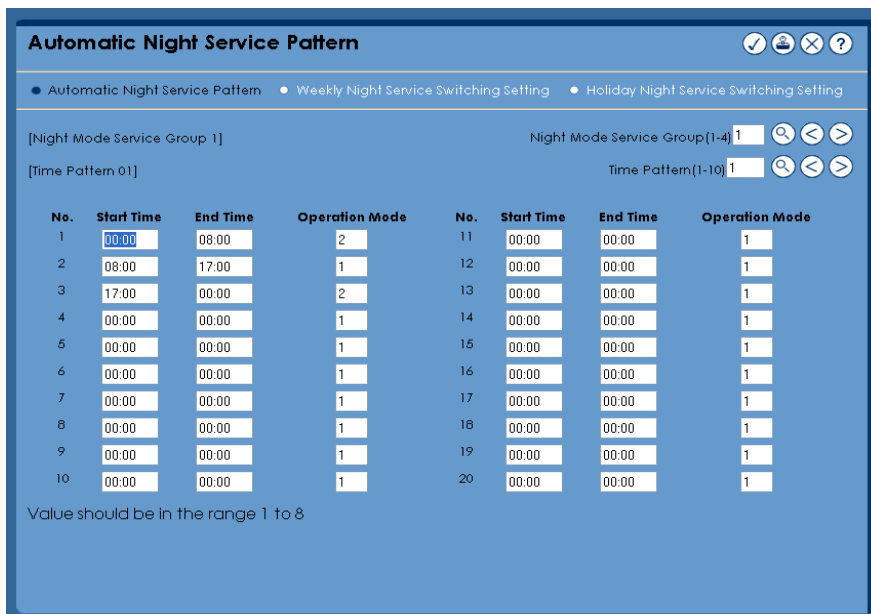
UserPro allows a System Administrator to configure basic system configuration and call routing such as Night Service setup, Doorphone Ringing assignment, Speed Dial, Incoming ring group etc.

After entering the UA level ID and password the user is directed to the home page



The home page allows the user to set the system date and time and configure the music on hold tone. By selecting each individual bullet the user is navigated to each individual configuration screens.

## Automatic Night Service Patterns



Each extension and trunk is pre-assigned to a night service group (default=1). The Automatic Night Service Pattern page enables the user to configure the time patterns and operation mode for each Night mode group of the system. The start and end time is configured in 24hour mode and 8 operation mode are available.

## Using UserPro - UA level

The screenshot shows the 'Automatic Night Service Pattern' configuration window with the 'Weekly Night Service Switching Setting' tab selected. The window title is 'Automatic Night Service Pattern'. Below the title bar, there are three tabs: 'Automatic Night Service Pattern' (selected), 'Weekly Night Service Switching Setting', and 'Holiday Night Service Switching Setting'. The main content area is titled '[Night Mode Service Group 1]' and includes a search and navigation bar for 'Night Mode Service Group(1-4)' with the value '1'. The configuration is organized into four columns: 'Day of Week', 'Time Schedule Pattern', 'Day/Night Mode', and 'Text Data'. The 'Day of Week' column lists days from Sun to Sat. The 'Time Schedule Pattern' column shows values like '2', '1', and '2'. The 'Day/Night Mode' column lists modes from Mode 1 to Mode 8. The 'Text Data' column shows text like 'Night', 'M-Night', 'Rest', 'Day2', 'Night2', 'M-Night2', and 'Rest2'. An 'Input Range Info.' section is visible at the bottom left.

Day of Week	Time Schedule Pattern	Day/Night Mode	Text Data
01 - Sun	2	01 - Mode 1	
02 - Mon	1	02 - Mode 2	Night
03 - Tue	1	03 - Mode 3	M-Night
04 - Wed	1	04 - Mode 4	Rest
05 - Thu	1	05 - Mode 5	Day2
06 - Fri	1	06 - Mode 6	Night2
07 - Sat	2	07 - Mode 7	M-Night2
		08 - Mode 8	Rest2

By selecting the 'Weekly Night Service Switching Setting' tab the time patterns are assigned to each day of the week and the displayed text data for each mode can be configured.

The screenshot shows the 'Automatic Night Service Pattern' configuration window with the 'Holiday Night Service Switching Setting' tab selected. The window title is 'Automatic Night Service Pattern'. Below the title bar, there are three tabs: 'Automatic Night Service Pattern', 'Weekly Night Service Switching Setting', and 'Holiday Night Service Switching Setting' (selected). The main content area is titled '[Night Mode Service Group 1]' and includes search and navigation bars for 'Night Mode Service Group(1-4)' (value '1') and 'Day of the year(1/1-12/31)' (value '01/01'). The configuration is organized into two columns: 'Day of the year' and 'Pattern'. The 'Day of the year' column lists dates from 01/01 to 01/20. The 'Pattern' column shows values like '0', '1', and '0'. An 'Input Range Info.' section is visible at the bottom left.

Day of the year	Pattern	Day of the year	Pattern
01/01	0	01/11	0
01/02	0	01/12	0
01/03	0	01/13	0
01/04	0	01/14	0
01/05	0	01/15	0
01/06	0	01/16	0
01/07	0	01/17	0
01/08	0	01/18	0
01/09	0	01/19	0
01/10	0	01/20	0

The 'Holiday Night Service Switching Setting' tab allows the user to configure a night mode pattern to a specific day of the year.

## DISA User ID

DISA User	Password	DISA User	Password
01	<input type="password"/>	11	<input type="password"/>
02	<input type="password"/>	12	<input type="password"/>
03	<input type="password"/>	13	<input type="password"/>
04	<input type="password"/>	14	<input type="password"/>
05	<input type="password"/>	15	<input type="password"/>
06	<input type="password"/>		
07	<input type="password"/>		
08	<input type="password"/>		
09	<input type="password"/>		
10	<input type="password"/>		

You must enter 6 characters. Valid characters are 0-9, \*, #

The DISA User ID page allows the user to configure the password for DISA access to the system.

## Mail Box

DSP-DBU Message Box	Mail Box	Mail Box Password	DSP-DBU Message Box	Mail Box	Mail Box Password
001	<input type="password"/>	<input type="password"/>	011	<input type="password"/>	<input type="password"/>
002	<input type="password"/>	<input type="password"/>	012	<input type="password"/>	<input type="password"/>
003	<input type="password"/>	<input type="password"/>	013	<input type="password"/>	<input type="password"/>
004	<input type="password"/>	<input type="password"/>	014	<input type="password"/>	<input type="password"/>
005	<input type="password"/>	<input type="password"/>	015	<input type="password"/>	<input type="password"/>
006	<input type="password"/>	<input type="password"/>	016	<input type="password"/>	<input type="password"/>
007	<input type="password"/>	<input type="password"/>	017	<input type="password"/>	<input type="password"/>
008	<input type="password"/>	<input type="password"/>	018	<input type="password"/>	<input type="password"/>
009	<input type="password"/>	<input type="password"/>	019	<input type="password"/>	<input type="password"/>
010	<input type="password"/>	<input type="password"/>	020	<input type="password"/>	<input type="password"/>

You must enter 4 characters. Valid characters are 0-9, \*, #. 9999 is not allowed

The Mail Box page allows addition and deletion of mailboxes and addition, edit and deletion of mailboxes passwords for the DSPDB voice mail (where available),

## Text Message

Text Message	Text Data	Text Message	Text Data
01	IN MEETING UNTIL ###	11	MESSAGE 11
02	MEETING ROOM - #####	12	MESSAGE 12
03	COME BACK ###	13	MESSAGE 13
04	PLEASE CALL #####	14	MESSAGE 14
05	BUSY CALL AFTER ###	15	MESSAGE 15
06	OUT FOR LUNCH BACK ##	16	MESSAGE 16
07	BUSINESS TRIP BACK ##/	17	MESSAGE 17
08	BUSINESS TRIP #####	18	MESSAGE 18
09	GONE FOR THE DAY	19	MESSAGE 19
10	ON VACATION UNTIL ##/	20	MESSAGE 20

Only single byte characters are allowed.

The text message page allows the edit of text messages used for the Selectable Display Messaging feature.

## Incoming Ring Group Extension

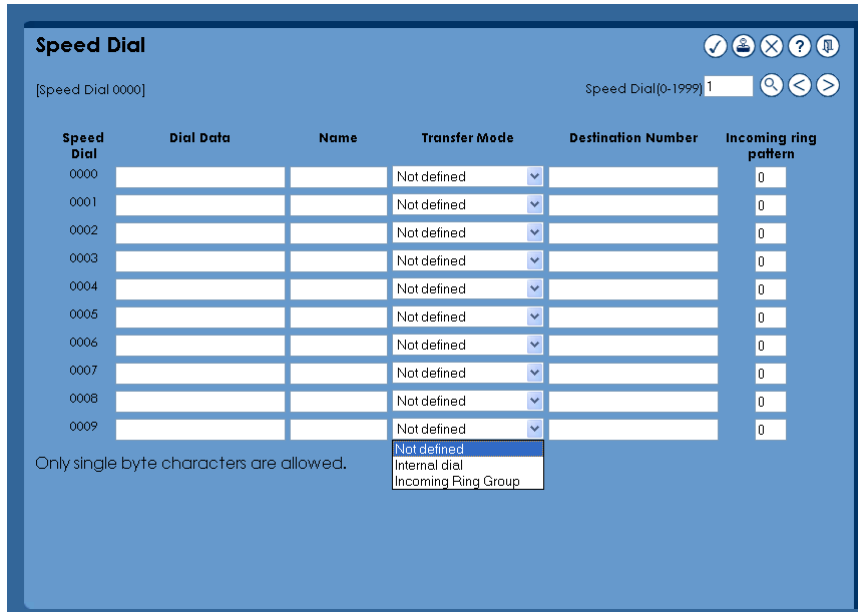
Incoming Ring Group Extension	Extension	Incoming Ring Group Extension	Extension
01	200	11	
02		12	
03		13	
04		14	
05		15	
06		16	
07		17	
08		18	
09		19	
10		20	

Input Range Info.

Incoming ring groups are used on the system for routing incoming calls on trunks, depending on the system configuration. The Incoming Ring Group Extension page allows for the addition or deletion of extensions to the incoming ring groups.



## Speed Dial



Speed Dial

[Speed Dial 0000] Speed Dial(0-1999) 1

Speed Dial	Dial Data	Name	Transfer Mode	Destination Number	Incoming ring pattern
0000			Not defined		0
0001			Not defined		0
0002			Not defined		0
0003			Not defined		0
0004			Not defined		0
0005			Not defined		0
0006			Not defined		0
0007			Not defined		0
0008			Not defined		0
0009			Not defined		0

Only single byte characters are allowed.

Transfer Mode options: Not defined, Internal dial, Incoming Ring Group

The system has the ability to store up to 2000 speed dials. This page allows for the editing of the system speed dials numbers and names (Used for keyphone display, directory dialling and clip alpha tagging). In addition, if the 'Flexible Ringing by Caller ID' feature is used this page can be used to route calls amatching the Speed Dial data to the specified destination.

## Night Mode Switching (other group)



Night Mode Switching(Other Group)

[Night Mode Service Group 1] Night Mode Service Group(1-4) 1

Night Mode Service Group

1	Mode 1
2	Mode 1
3	Mode 1
4	Mode 1

Input Range Info.

In addition to the Automatic Night Service Patterns it is possible to manually set system into the required mode. This page enables the user to select the night service mode, not only for their group, but also for other groups on the system.

## Using UserPro - UA level

### DSS key Assignment

DSS Key	Function Number	Additional Data
01	01-DSS/One-Touch	200
02	01-DSS/One-Touch	201
03	01-DSS/One-Touch	202
04	01-DSS/One-Touch	203
05	01-DSS/One-Touch	204
06	01-DSS/One-Touch	205
07	01-DSS/One-Touch	206
08	01-DSS/One-Touch	207
09	01-DSS/One-Touch	208
10	01-DSS/One-Touch	209

"01"- Up to 36 digits(0-9,#,P,R,@)

If a DSS console is fitted to an operator position on the system it is possible to configure the keys for various options. This page enables the user to configure the keys from a drop down menu.

### Doorphone Ringing Assignment

	Mode 1	Mode 2	Mode 3	Mode 4	Mode 5	Mode 6	Mode 7	Mode 8
01 - Doorphone Member1	200	200	200	200	200	200	200	200
02 - Doorphone Member2								
03 - Doorphone Member3								
04 - Doorphone Member4								
05 - Doorphone Member5								
06 - Doorphone Member6								
07 - Doorphone Member7								
08 - Doorphone Member8								
09 - Doorphone Member9								
10 - Doorphone Member10								

Input Range Info.

The doorphone ringing assignment page allows for the addition and removal of extensions configured to ring for each of the doorphones on the system.

## Dial-In Name

**Dial-in Name**

[Conversion Table 0001]      Conversion Table{1-2000} 1

Conversion Table	Dial-in Name	Conversion Table	Dial-in Name
0001	<input type="text"/>	0011	<input type="text"/>
0002	<input type="text"/>	0012	<input type="text"/>
0003	<input type="text"/>	0013	<input type="text"/>
0004	<input type="text"/>	0014	<input type="text"/>
0005	<input type="text"/>	0015	<input type="text"/>
0006	<input type="text"/>	0016	<input type="text"/>
0007	<input type="text"/>	0017	<input type="text"/>
0008	<input type="text"/>	0018	<input type="text"/>
0009	<input type="text"/>	0019	<input type="text"/>
0010	<input type="text"/>	0020	<input type="text"/>

Only single byte characters are allowed.

Dial-In Name is the name associated with each DDI entry and is displayed on a display phone when an incoming call is received on that DDI. This page allows the editing of the Dial-in name.

## Extension Numbers

**Extension Numbers**

[Station Port 001]      Station Port{1-96} 1

Station Port	Extension Numbers	Telephone Settings
001	200	
002	201	
003	202	
004	203	
005	204	
006	205	
007	206	
008	207	

Valid characters are 0-9, \*, #

This page gives the user the ability to set the extension numbers on the system, by selecting the 'handset' next to the extension various settings can be configured for the extension.

### Extension Settings

**Extension Numbers**

• Function Key Assignment • Virtual Extension Ring Assignment • One Touch Key Assignment

Extension Name: EXT 200

Night Mode Switching (Own Group): Mode 1

Call Forward - Immediate/No Answer/Both Ring: No Setting

Call Forward-Busy: No Setting

Trunk Incoming Ring Tone: Melody 5

Internal Incoming Ring Tone: Medium

LCD Language Selection: English

Toll Restriction Override Password:

User Programming Password: 1111

[Input Range Info.](#)

From this page it is possible to set various options for the extension.

**Note:** when this page is selected the telephone that is being configured is out of service

This page enables the setting of:

- Extension name
- Night mode switching (for own group)
- Call forward immediate + destination
- Call forward busy + destination
- Trunk and internal incoming ring tone
- Display language selection
- Toll restriction override password, and
- User programming password for UserPro

From this page it is also possible to select additional configuration pages for the selected extension, these are: Function key assignment, virtual extension ring assignment and one touch key assignment.

## Function key assignment

**Extension Numbers**

• Function Key Assignment • Virtual Extension Ring Assignment • One Touch Key Assignment

[Displaying Extension 200]

[Function Key 01] Function Key[1-48] 1

Function Key	Function Number	Additional Data
01	*01-Trunk Line	1
02	*01-Trunk Line	2
03	*01-Trunk Line	3
04	*01-Trunk Line	4
05	*01-Trunk Line	5
06	*01-Trunk Line	6
07	*01-Trunk Line	7
08	*01-Trunk Line	8

\*\*01\*\* - 'Trunk Line No.(ML:001-200 VS:1-8)'

From this page the function keys are configured for the selected keyphone. The functions are selectable from the drop down list and any additional data is entered in the adjacent box.

## Vitual Extension Ring Assignment

**Extension Numbers**

• Function Key Assignment • Virtual Extension Ring Assignment • One Touch Key Assignment

[Displaying Extension 200]

[Function Key 01] Function Key[1-48] 1

Function Key	Operation Mode 1	Operation Mode 2	Operation Mode 3	Operation Mode 4	Operation Mode 5	Operation Mode 6	Operation Mode 7	Operation Mode 8
01	No ring	No ring	No ring	No ring	No ring	No ring	No ring	No ring
02	No ring	No ring	No ring	No ring	No ring	No ring	No ring	No ring
03	No ring	No ring	No ring	No ring	No ring	No ring	No ring	No ring
04	No ring	No ring	No ring	No ring	No ring	No ring	No ring	No ring
05	No ring	No ring	No ring	No ring	No ring	No ring	No ring	No ring
06	No ring	No ring	No ring	No ring	No ring	No ring	No ring	No ring
07	No ring	No ring	No ring	No ring	No ring	No ring	No ring	No ring
08	No ring	No ring	No ring	No ring	No ring	No ring	No ring	No ring
09	No ring	No ring	No ring	No ring	No ring	No ring	No ring	No ring
10	No ring	No ring	No ring	No ring	No ring	No ring	No ring	No ring

Input Range Info.

If a virtual extension key has been configured on a keyphone, it is possible, from this page, to configure the keyphone to ring when a call is presented to the virtual extension key number.

## One Touch Key Assignment

## Using UserPro - UA level

---

One Touch Key	Number	Name
01	<input type="text"/>	<input type="text"/>
02	<input type="text"/>	<input type="text"/>
03	<input type="text"/>	<input type="text"/>
04	<input type="text"/>	<input type="text"/>
05	<input type="text"/>	<input type="text"/>
06	<input type="text"/>	<input type="text"/>
07	<input type="text"/>	<input type="text"/>
08	<input type="text"/>	<input type="text"/>
09	<input type="text"/>	<input type="text"/>
10	<input type="text"/>	<input type="text"/>

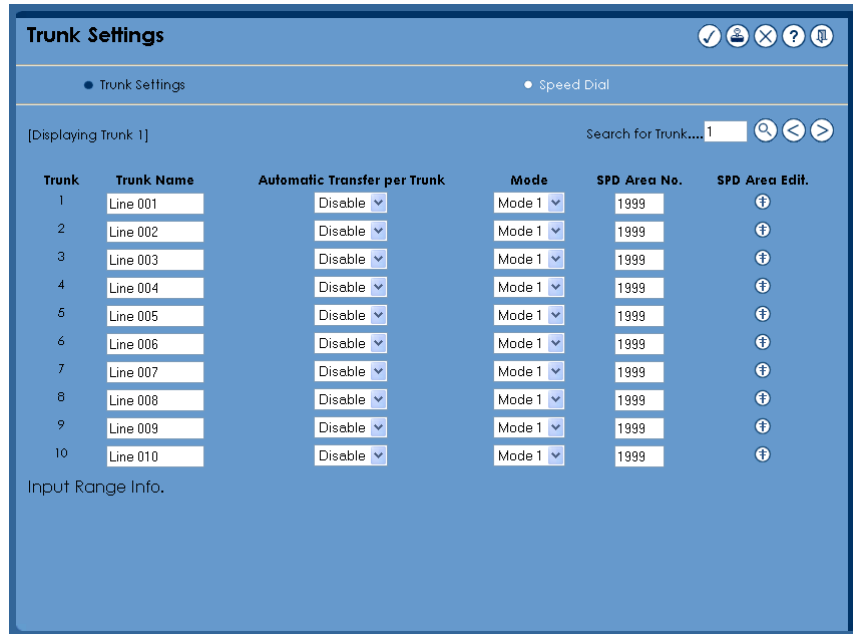
Input Range Info.

One-touch calling gives a system phone user one button access to extension, trunks and selected system features. Instead of dialling a series of codes, the user need only press the one-touch key. An extension user can have one-touch keys programmed for:

- Direct Station Selection - one button access to extensions
- Personal Speed Dial - one button access to stored numbers (up to 24 digits long)
- Abbreviated Dialling - one button access to stored Abbreviated Dialling Numbers
- Trunk Calling - one button access to trunks or trunk groups
- Service Codes - one button access to specific Service Codes


This page allows the programming of the selected extensions one-touch keys.

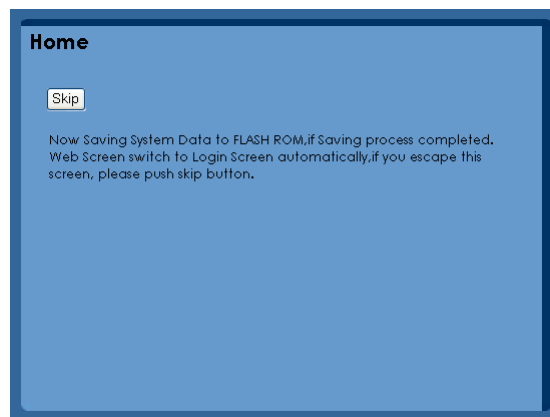
## Trunk Settings



From this page it is possible to configure limited options for each individual trunk including the trunk name. If enabled this page also allows for the configuration of automatic trunk to trunk forwarding configurable for each night mode to the required speed dial location. By selecting the 'SPD Area edit' button for each trunk, the SPD area for the trunk can be edited. The speed dial area can be accessed by selecting the 'Speed Dial' tab at the top of the page.

## Exit

When the exit key  is pressed the following screen will be displayed. Please wait to enable the system to save the changes to flash before returning to the login page.



## Using UserPro - UB level

---

---

### UB level

UB level UserPro enables each system user access to basic options configurable for their extension.

**Note:** when this is selected the telephone that is being configured is out of service

### Home Page

**Extension Numbers**

• Function Key Assignment • Virtual Extension Ring Assignment • One Touch Key Assignment

Extension Name: EXT 200

Night Mode Switching(Own Group): Mode 1

Call Forward -Immediate/No Answer/Both Ring: No Setting

Call Forward-Busy: No Setting

Trunk Incoming Ring Tone: Melody 5

Internal Incoming Ring Tone: Medium

LCD Language Selection: English

Toll Restriction Override Password:

User Programming Password: 1111

Input Range Info.

From this page it is possible to set various options for the extension.

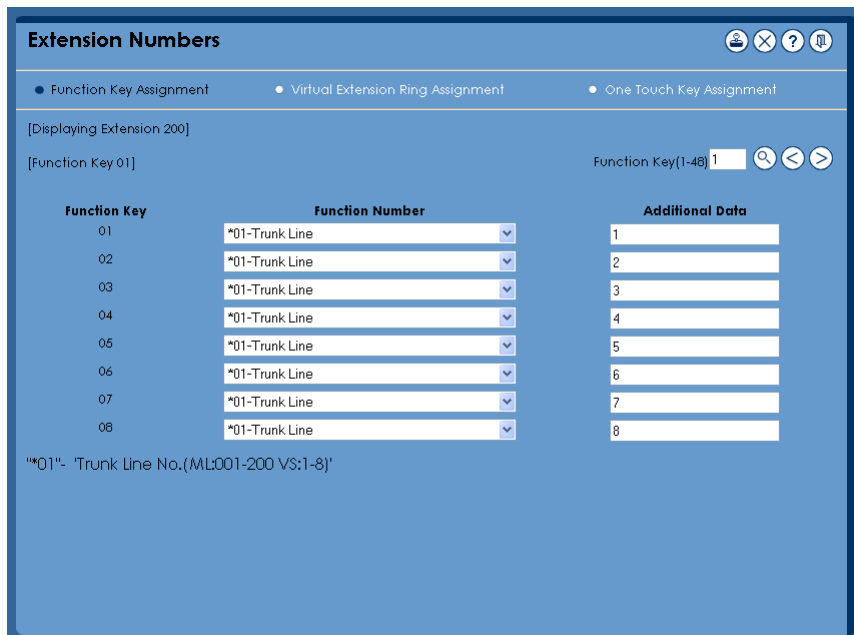
This page enables the setting of:

- Extension name
- Night mode switching (for own group)
- Call forward immediate + destination
- Call forward busy + destination
- Trunk and internal incoming ring tone
- Display language selection
- Toll restriction override password, and
- User programming password for UserPro

From this page it is also possible to select additional configuration pages for the selected extension, these are: Function key assignment, virtual extension ring assignment and one touch key assignment.

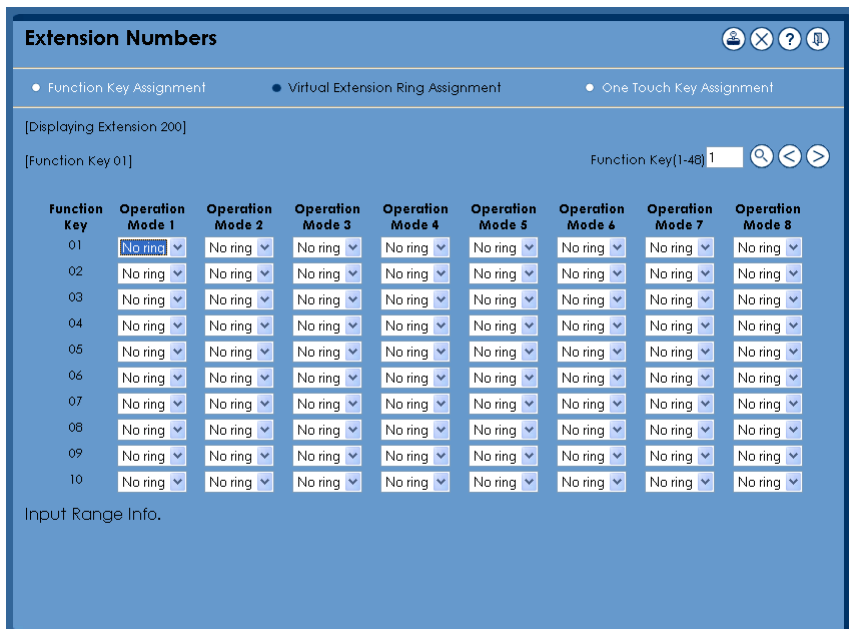
### Function Key Assignment





From this page the function keys are configured for the selected keyphone. The functions are selectable from the drop down list and any additional data is entered in the adjacent box.

## Virtual Extension Ring Assignment



If a virtual extension key has been configured on a keyphone, it is possible, from this page, to configure the keyphone to ring when a call is presented to the virtual extension key number.

### One Touch Key Assignment

**Extension Numbers**

• Function Key Assignment • Virtual Extension Ring Assignment • **One Touch Key Assignment**

[Displaying Extension 200]

One Touch Key	Number	Name
01		
02		
03		
04		
05		
06		
07		
08		
09		
10		


Valid characters are 0~9, #, \*, P, R, @. P=Pause, R=Hookflash, @=Wildcard

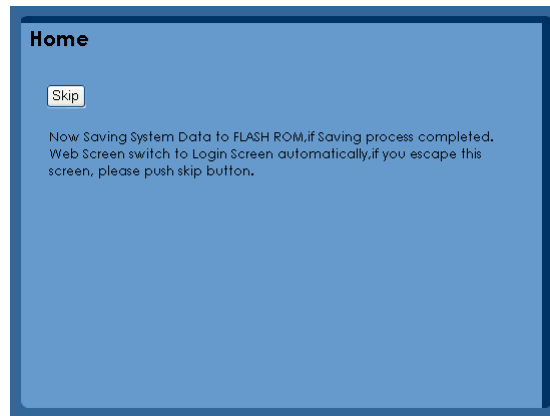
One-touch calling gives a system phone user one button access to extension, trunks and selected system features. Instead of dialling a series of codes, the user need only press th eone-touch key. An extension user can have one-touch keys programmed for:

- Direct Station Selection - one btton access to extensions
- Personal Speed Dial - one button acces to stored numbers (up to 24 digits long)
- Abbreviated Dialling - one button acces to stored Abbreviated Dialling Numbers
- Trunk Calling - one button access to trunks or trunk groups
- Service Codes - one button access to specific Service Codes

This page allows the programming of the selected extensions one-touch keys.

### Exit

When the exit key  is pressed the following screen will be displayed. Please wait to enable the system to save the changes to flash before returning to the login page.







# NEC

## NEC Infrontia

UserPro Manual

**NEC Infrontia LTD**  
**75 Swingbridge Road, Loughborough,**  
**Leicestershire.**  
**Tel: (+44) 01509 643100 Fax: (+44) 01509 610206**  
**[www.neci.co.uk](http://www.neci.co.uk)**

## Free Manuals Download Website

<http://myh66.com>

<http://usermanuals.us>

<http://www.somanuals.com>

<http://www.4manuals.cc>

<http://www.manual-lib.com>

<http://www.404manual.com>

<http://www.luxmanual.com>

<http://aubethermostatmanual.com>

Golf course search by state

<http://golfingnear.com>

Email search by domain

<http://emailbydomain.com>

Auto manuals search

<http://auto.somanuals.com>

TV manuals search

<http://tv.somanuals.com>