

NETGEAR®

Installation Guide

A6100 WiFi USB Adapter
802.11ac Dual Band

Package Contents



A6100 WiFi USB Adapter



Resource CD

Installation

Follow these instructions to begin using your A6100 WiFi USB Adapter.

To set up your adapter:

1. Insert the resource CD in your computer CD drive.

Note: If your computer does not have a CD drive, download the A6100 resource CD driver by visiting <http://support.netgear.com>. Click the **Support for Home Products** button and enter **A6100** in the search field.

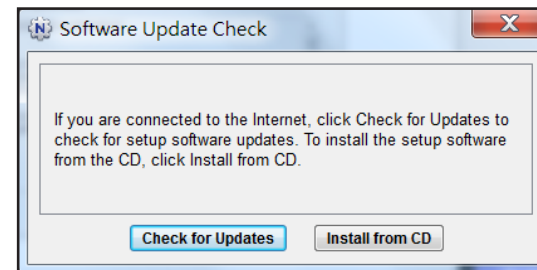
If the Resource CD screen does not display, browse the files on the CD and double-click **Autorun.exe**.

The NETGEAR Resource CD screen displays.



2. Click the **Setup** link.

The Software Update Check screen displays.



3. Install the setup software.

You have two options:

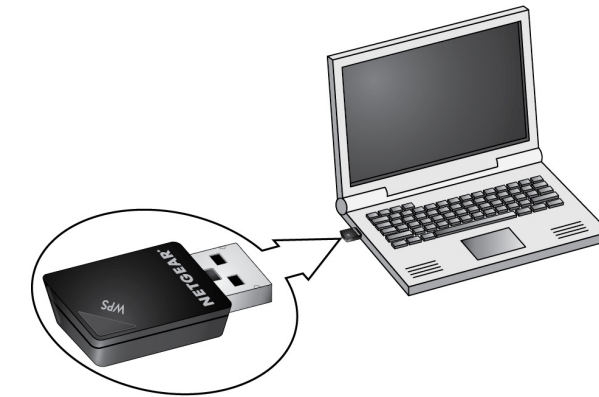
- **Connected to the Internet.** If you are connected to the Internet, click the **Check for Updates** button. After the software checks for updates, the Update Check Complete screen displays. Click the **Continue** button. The Welcome screen displays.
- **Not connected to the Internet.** If you are not connected to the Internet, click the **Install from CD** button. The Welcome screen displays.

4. Click the **I agree** radio button to accept the license agreement and then click the **Next** button.

A message displays asking you to wait while software is installed. After a few minutes, NETGEAR genie prompts you to insert your adapter.

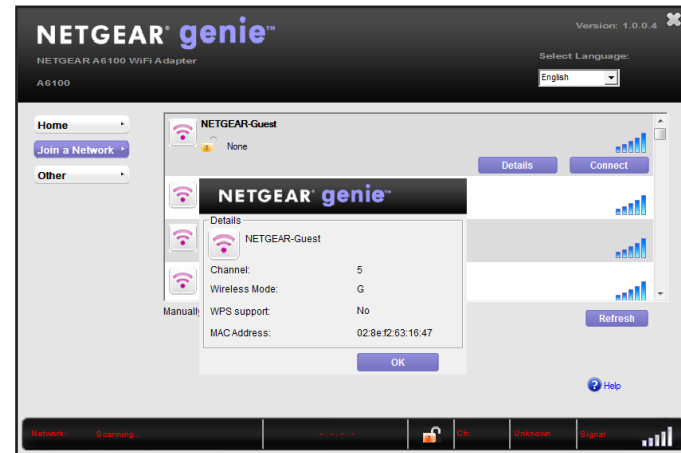


5. Insert the adapter into a USB port on your computer, as shown:



6. Click the **Next** button.
The NETGEAR genie screen displays.

NETGEAR genie displays a list of wireless networks in your area.



Standalone Driver Installation

To install a standalone driver:

1. Insert the resource CD in your computer CD drive.

Note: If your computer does not have a CD drive, download the A6100 resource CD driver by visiting <http://support.netgear.com>. Click the **Support for Home Products** button and enter **A6100** in the search field.

If the Resource CD screen does not display, browse the files on the CD and double-click **Autorun.exe**.

2. Click the **Install Windows Standalone Driver** link.

The driver installs on your computer.

3. When prompted, insert the adapter into a USB port on your computer.

NETGEAR, the NETGEAR logo, and Connect with Innovation are trademarks and/or registered trademarks of NETGEAR, Inc. and/or its subsidiaries in the United States and/or other countries. Information is subject to change without notice. © NETGEAR, Inc. All rights reserved.



201-17247-03

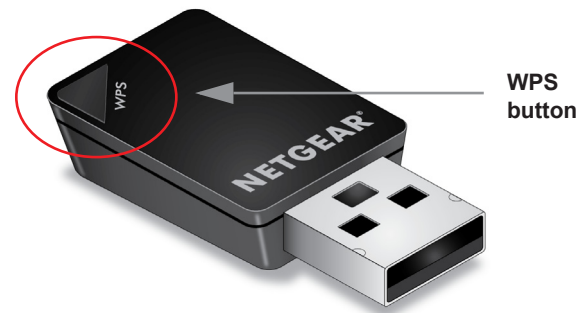
NETGEAR, Inc.
350 East Plumeria Drive
San Jose, CA 95134 USA

August 2013

Join a Wireless Network

You can join a wireless network from the NETGEAR genie, or you can use Wi-Fi Protected Setup (WPS) if your wireless router supports it.




- **NETGEAR genie.** From the NETGEAR genie screen, click the **Join a Network** button. Select your wireless network and click the **Connect** button. If the network is secure, enter its password or network key.
- **WPS.** Press and hold the **WPS** button on the adapter for two seconds. Within two minutes, press the **WPS** button on your wireless router or gateway.



The adapter joins the network, which can take a few minutes. Your settings are saved in a profile.

Check Your Connection Status

When you install your adapter, the NETGEAR genie icon displays in the Windows system tray and on the desktop. You can double-click this icon to open NETGEAR genie to make changes or connect to a different wireless network. The color of the icon indicates the strength of your wireless connection:

-  **White.** 3–5 bars (strong connection)
-  **Yellow.** 1–2 bars (weak connection)
-  **Red.** 0 (zero) bars (no connection)

If you remove your adapter, NETGEAR genie is not available, so the icon does not display. When you insert the adapter again, the icon returns.

Support

Thank you for selecting NETGEAR products.

After installing your device, locate the serial number on the label of your product and use it to register your product at <https://my.netgear.com>.

You must register your product before you can use NETGEAR telephone support. NETGEAR recommends registering your product through the NETGEAR website. For product updates and web support, visit <http://support.netgear.com>.

NETGEAR recommends that you use only the official NETGEAR support resources.

You can get the user manual online at <http://downloadcenter.netgear.com> or through a link in the product's user interface.

For the current EU Declaration of Conformity, visit http://support.netgear.com/app/answers/detail/a_id/11621/.

Free Manuals Download Website

<http://myh66.com>

<http://usermanuals.us>

<http://www.somanuals.com>

<http://www.4manuals.cc>

<http://www.manual-lib.com>

<http://www.404manual.com>

<http://www.luxmanual.com>

<http://aubethermostatmanual.com>

Golf course search by state

<http://golfingnear.com>

Email search by domain

<http://emailbydomain.com>

Auto manuals search

<http://auto.somanuals.com>

TV manuals search

<http://tv.somanuals.com>