

# NETGEAR®

Installation Guide

## 10/100 PCI Network Interface Card Model FA311 v2

Estimated Completion: 10 minutes.

# Start Here

Follow these instructions to install the NETGEAR FA311 v2 PCI Adapter in a computer with the Windows XP or Windows 2000 operating system with the latest service pack.

**Note:** If you are working with a new installation, decide on a name for your network and for each PC. The whole network must have the same network name, while each PC must have a unique name. For detailed instructions, see the Windows manual, online help, or support.

### 1. First, install the Ethernet adapter.

- Shut down the computer.
- Unplug the computer power cord, and open the case.
- Locate an available PCI slot (check your computer's manual to determine which slots are the PCI slots) and remove the corresponding back plate from the PC chassis.

**Caution:** Touch a grounded metal object such as the power supply to free yourself of static electricity before you handle the network card. To avoid damaging any components on the NETGEAR FA311 v2 PCI Adapter, handle it by the edges.

- Insert the FA311 v2 into the PCI expansion slot. Make sure that the card is fully inserted.
- Fasten the card to the rear of the computer chassis by tightening the screw that is on the PC.
- Close the case, plug the power cord back in, and restart your computer.

### 2. Next, connect the network cables.

Use Ethernet cable to connect a switch or hub to the NETGEAR FA311 v2 PCI Adapter.

The port on the card performs autonegotiation and supports full-duplex operation.

**Warning:** Windows detects the Ethernet adapter, and automatically installs a driver based on its chipset. You must update that driver to work with the NETGEAR NETGEAR FA311 v2 PCI Adapter.

### 3. Then, use Windows Device Manager.

**Note:** Windows dialog box displays may vary from one computer to another, but Windows should prompt for the same information. If a Windows compatibility warning window pops up, select Continue Anyway.

- Go to System Properties for the NETGEAR FA311 v2 PCI Adapter. To do this go to the Windows Start menu, select Control Panel, and double-click System; or right-click My Computer on the desktop and select Properties.
- Click the Hardware tab, and then click the Device Manager button.



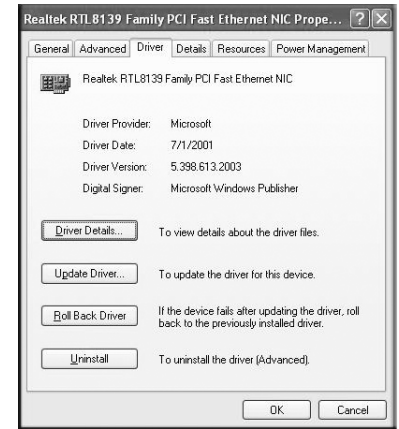
- From Device Manager, double-click Network adapters, and then double-click your network adapter card.

The network adapter that Windows selected depends on the operating system. In most cases, the following will be displayed:

- Windows XP:** RealTek RTL8139 Family PC Fast Ethernet NIC
- Windows 2000:** RealTek RTL8139(A)-based PCI Fast Ethernet Adapter



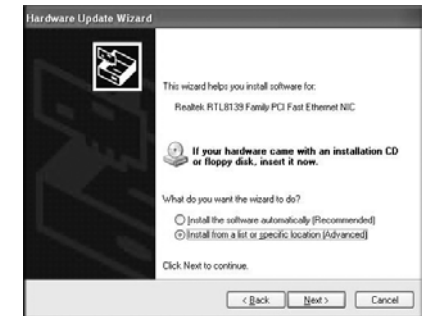
- In the Properties dialog box, click the Driver tab.
- Click the Update Driver button.



### 4. Next, use the Windows Hardware Update Wizard

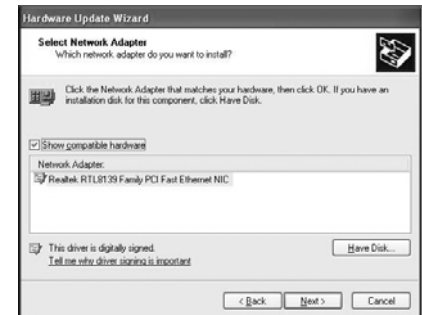
The Hardware Update Wizard window opens, as shown to the right.

- Insert the *NETGEAR Resource CD*. This CD contains drivers for NETGEAR Ethernet adapters. If the CD main menu appears, close or minimize the window.
- Choose to install the driver from a list.



- Follow the wizard prompts to locate the driver on the *NETGEAR Resource CD* and select it.
- When the wizard is finished, remove the *NETGEAR Resource CD* from your computer.

**Note:** If the driver is not installed properly, there is an exclamation point next to the adapter in Device Manager. Reboot the PC and if the exclamation mark is still there, repeat the software driver update process from Step 3. If the problem persists, contact NETGEAR Technical Support.





201-10724-01

January 2006

Download from [Www.Somanuals.com](http://www.Somanuals.com). All Manuals Search And Download.

Technical Specifications	
Standards Compatibility	IEEE 802.3U Fast Ethernet IEEE 802.3 Ethernet IEEE 802.3U Auto Negotiation Autosensing PCI Plug and Play 2.1 or 2.2 Compatible
Interface Options	RJ-45 Connector
Dimensions	Dimensions: 5.7 x 3.7 in (14.4 x 9.3 cm) Weight: 0.20 lbs (90 g)
Environmental Specifications	Operating Temperature: 0 to 40 degrees C Operating Humidity: 10% to 90% noncondensing
Agency Compliance	CE Mark FCC, Part 15, Class B EN 55 022 (CISPR 22) Class B Canada ICES-003, Class B VCCI Class B

## Technical Support

Locate the serial number on the bottom label of your product and use it to register your product at <http://www.NETGEAR.com/register>.

Registration on the Web site or over the phone is required before you can use our telephone support service. The phone numbers for worldwide regional customer support centers are on the Warranty and Support Information card that came with your product.

Go to <http://kbserver.netgear.com> for product updates and Web support.

Phone: 1-888-NETGEAR, for US & Canada only. For other countries, see your Support information card.

E-mail: [support@netgear.com](mailto:support@netgear.com)



This symbol was placed in accordance with the European Union Directive 2002/96 on the Waste Electrical and Electronic Equipment (the WEEE Directive). If disposed of within the European Union, this product should be treated and recycled in accordance with the laws of your jurisdiction implementing the WEEE Directive.

© 2006 by NETGEAR, Inc. All rights reserved. NETGEAR is a registered trademark of Netgear, Inc. in the United States and/or other countries. Other brand and product names are trademarks or registered trademarks of their respective holders.

## Free Manuals Download Website

<http://myh66.com>

<http://usermanuals.us>

<http://www.somanuals.com>

<http://www.4manuals.cc>

<http://www.manual-lib.com>

<http://www.404manual.com>

<http://www.luxmanual.com>

<http://aubethermostatmanual.com>

Golf course search by state

<http://golfingnear.com>

Email search by domain

<http://emailbydomain.com>

Auto manuals search

<http://auto.somanuals.com>

TV manuals search

<http://tv.somanuals.com>