

NETGEAR RangeMax™ Wireless-N USB 2.0 Adapter WN111v2

These setup instructions assume that you will connect to an access point or wireless router.

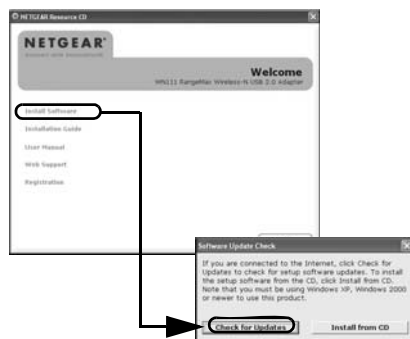
Estimated completion time: 10 minutes.

Installation

Install the NETGEAR WN111v2 Software

Insert the *Resource CD*. If the CD main page does not display, browse the files on the CD and double-click **Autorun.exe**.

1. Click **Install the Software**. The Software Update Check screen displays.
2. NETGEAR recommends that you upgrade when new firmware is available. If you are connected to the Internet, click **Check for Updates**. If not, install from the CD.



The NETGEAR Smart Wizard Welcome screen displays.

3. Follow the onscreen instructions to install the NETGEAR WN111v2 software.
4. When the NETGEAR Smart Wizard Installation Complete screen displays, click **Next**.

Insert the Wireless USB Adapter

Connect the wireless adapter to a USB port on your computer:

1. For best results, put the wireless adapter at least 4 feet (1 meter) away from your router.
2. Attach the wireless USB adapter directly to a USB port on your computer, or use the USB cable (see “Using the USB Cable and Cradle” on the other side of this document).



Continue the Installation

1. Depending on which Windows operating system you are using, do one of the following:
 - **Windows Vista.** If you are using a Windows Vista computer, the adapter and driver are automatically added.
Note: If a message that Windows Vista cannot verify the publisher of this driver displays, click **Install this driver software anyway**.
 - **Windows XP or Windows 2000 SP4.** If you are using a Windows XP or Windows 2000 SP4 computer, follow the onscreen instructions for the Found New Hardware Wizard.
Note: For Windows XP, if a Windows logo testing message appears, click **Continue Anyway**.

2. When the NETGEAR Smart Wizard screen returns, click **Next** to proceed.

Windows XP or Vista users can set up the wireless adapter either with the NETGEAR Smart Wizard (recommended) or the Windows configuration utilities.

For Windows configuration utilities, see the Windows documentation or the NETGEAR application note at: <http://documentation.netgear.com/reference/enu/winzerocfg/index.htm>.

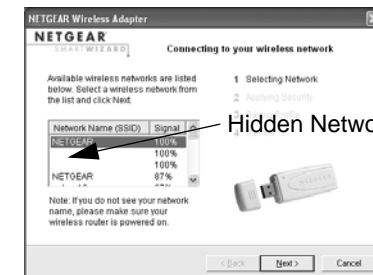
The NETGEAR Smart Wizard reveals more information about each network and makes it easier to troubleshoot network connection problems.

3. Click **Next** to accept the Smart Wizard.
You are prompted to let the wizard help you connect to a network (recommended).
4. Click **Next** to proceed.



Connect to a Wireless Network

The next screen that displays depends on whether there is a wireless router or access point at your location that supports Push 'N' Connect (Wi-Fi Protected Setup [WPS]).




The wireless networks in your area do not support WPS.



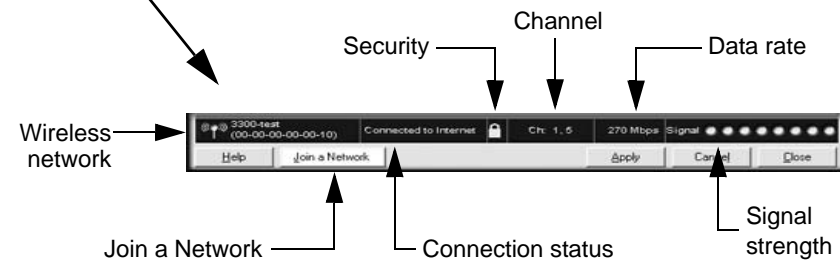
One or more wireless networks with WPS are in your area.

1. Follow the instructions on the Connecting to your wireless network screen:
 - If there are no WPS networks, select a wireless network from the drop-down list, and the wizard records your choice.
Note: Hidden networks do not broadcast the Network Name (SSID). These networks are in the drop-down list, but the Network Name (SSID) is blank. If the network uses security, then the Smart Wizard detects it.
 - If you want to use WPS to create a secure connection, leave the radio box checked and click **Next** to continue; otherwise, select the **No** radio box and click **Next** to continue.
2. WPS allows you to click a button or create a PIN number to securely connect to a wireless router or access point. Both the wireless adapter and the router or access point must support WPS. For more information about WPS, see the *NETGEAR RangeMax™ Wireless-N USB 2.0 Adapter WN111v2 User Manual* on the *Resource CD*.
3. Follow the Smart Wizard steps to connect to a network and to save a Profile.
4. After you have reviewed the settings, click **Finish**.

The WN111v2 icon  appears in the system tray and on the desktop. The Smart Wizard Settings tab also displays and the adapter initiates your wireless connection. It can take up to a minute to complete your connection.

Using the Status Bar

- For connection details, check the status bar, located at the bottom of the Settings tab.



Understanding the Status Bar

Understanding the Status Bar	
Wireless network	Identifies which wireless network you have joined.
Security	<ul style="list-style-type: none"> A closed lock indicates that security is enabled. An open lock indicates an open network without wireless security.
Channel	The wireless channel used by the network. If many wireless networks in your area use the same channel, they can interfere with one another.
Data rate	Wireless data rate measured in Megabits per second. To optimize wireless data rate, connect to a network with a high-speed router or access point and a high-speed Internet connection.
Signal strength	More dots indicates a stronger signal. Usually, you experience higher throughput when the signal is strongest.
Join a Network	Click Join a Network to start the Connection Wizard.




201-11304-01

May 2008

Understanding the Status Bar (continued)

Connection status	<p>The status of your network connection.</p> <ul style="list-style-type: none"> Connected to Internet. The wireless Internet connection is OK. Connected to Router. The wireless connection to the router is OK, but the router is not connected to the Internet. 169.254.x.x or _____._____. The wireless connection to the router is OK, but there is a problem with the router. See the <i>NETGEAR RangeMax™ Wireless-N USB 2.0 Adapter WN111v2 User Manual</i> on the <i>Resource CD</i>.
-------------------	--

- When you are finished reviewing the Settings tab, click **Close**.

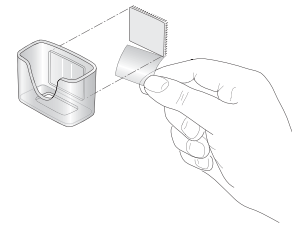
You can use the icon  at any later time to access your adapter settings. For information about all settings available for your wireless adapter, refer to the *NETGEAR RangeMax™ Wireless-N USB 2.0 Adapter WN111v2 User Manual* on the *Resource CD*.

Using the USB Cable and Cradle

You can attach the wireless USB adapter directly to a USB port on your computer, or use the USB cable, plastic cradle, and loop-and-hook fastener for better adapter placement on a computer monitor.

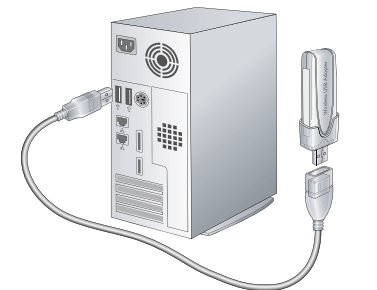
- Attach the first fastener.

The wireless USB adapter comes with three black fasteners. Locate the one with a prickly side, and attach it to the plastic cradle on the middle of the outside rear. Insert the adapter in the plastic cradle.

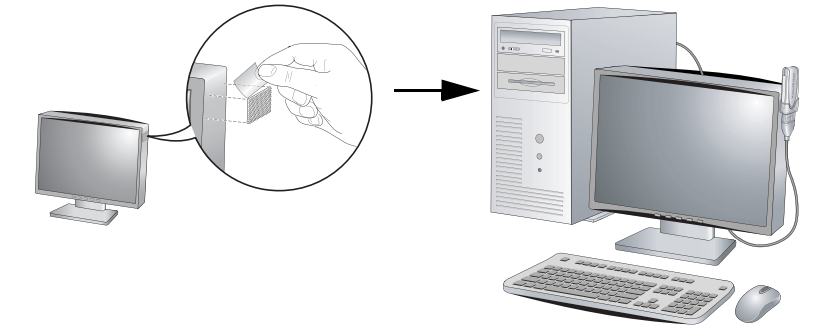


- Connect the USB cable.
- Place the other fasteners.

Place one of the other pieces of loop-and-hook fastener on the side or back of your monitor near the top for better reception.



Then join the pieces of the fastener to attach the USB adapter in the plastic cradle to the monitor.



Technical Support

After completing the Smart Wizard configuration assistant, locate the serial number on the bottom label of your product, and use it to register your product at <http://www.NETGEAR.com/register>.

Registration on the website or over the phone is required before you can use our telephone support service. The phone numbers for worldwide regional customer support centers are on the Warranty and Support Information card that came with your product.

Go to <http://www.netgear.com/support> for product updates and Web support.



Attention: When you configure the wireless settings of this device, please make sure to select the correct country settings. Due to EU law, the country settings must be identical to the country where the device is operating.



This symbol was placed in accordance with the European Union Directive 2002/96 on the Waste Electrical and Electronic Equipment (the WEEE Directive). If disposed of within the European Union, this product should be treated and recycled in accordance with the laws of your jurisdiction implementing the WEEE Directive.

© 2008 by NETGEAR, Inc. All rights reserved. NETGEAR and the NETGEAR logo are registered trademarks of NETGEAR, Inc. in the United States and/or other countries. Other brand and product names are trademarks or registered trademarks of their respective holders. Information is subject to change without notice.

Free Manuals Download Website

<http://myh66.com>

<http://usermanuals.us>

<http://www.somanuals.com>

<http://www.4manuals.cc>

<http://www.manual-lib.com>

<http://www.404manual.com>

<http://www.luxmanual.com>

<http://aubethermostatmanual.com>

Golf course search by state

<http://golfingnear.com>

Email search by domain

<http://emailbydomain.com>

Auto manuals search

<http://auto.somanuals.com>

TV manuals search

<http://tv.somanuals.com>