

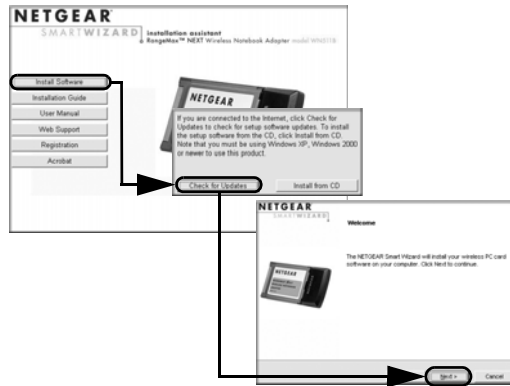
NETGEAR RangeMax™ NEXT Wireless Notebook Adapter WN511T

These setup instructions assume that you will connect to an access point or wireless router.
Estimated completion time: 10 minutes.

Windows XP Installation

1. First, install the WN511T software.

Insert the NETGEAR CD. If the CD main page does not appear, double click **Autorun.exe** on the CD.



- Click **Install Software**. The Check for Updates window will open.
- If you are connected to the Internet, click **Check for Updates**. If not, you can choose to install from the CD.
- When the Installation Complete message appears, click **Next**.
- On the SmartWizard screen, click **Next** to proceed with the SmartWizard setup.

2. Now, insert the wireless notebook adapter.

- When prompted, insert your wireless notebook adapter.
- Click **Next** to proceed. Windows will discover the adapter and continue the software installation process.
- Follow the Windows prompts to complete the software installation.
If a Windows logo certification warning appears, click Continue to proceed with the installation.
- When the Windows software installation is complete, click **Finish**.



3. Use the Smart Wizard to set up your wireless notebook adapter.

- Choose to set up your wireless adapter either with the NETGEAR Smart Wizard (recommended) or the Windows configuration utility.



Note: If you choose the Windows Zero Configuration option, then you must read the Windows XP documentation for instructions.

- Click **Next** to accept the NETGEAR Smart Wizard. You will be prompted to let the wizard help you connect to a network (recommended).




- Click **Next** to accept.

- Select the wireless network from the drop-down list, and the wizard records your choice.



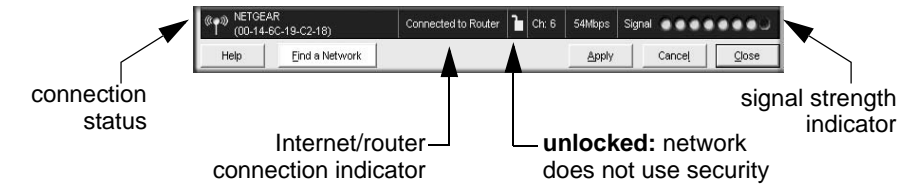
Note: Hidden networks do not broadcast the Network Name (SSID). These networks are included in the drop-down list, but the Network Name (SSID) is blank.



- The Smart Wizard will detect if the network uses security or not. Follow the Wizard steps for Security (if used) and for saving a Profile.
- After you have reviewed the settings, click **Finish**.

The WN511T icon  appears in the system tray and on the desktop, and the Settings page opens. The wizard initiates your wireless connection. It could take up to a minute for your wireless connection to be established.

4. Use the status bar to verify your wireless connectivity.

The status bar is located at the bottom of the Settings page.



- The connection status indicator  and the WN511T icon  show the status of the connection.
- For details about the icons in the status bar, the WN511T LEDs, and troubleshooting tips, see the *User Manual* on the NETGEAR CD.
- The Internet/Router connection indicator shows the progress of your connection.

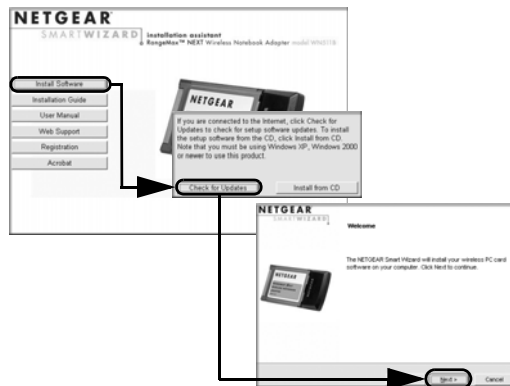


Connection Indicator	Description
Connected to Internet	Wireless Internet connection OK.
Connected to Router	Wireless connection to router OK but no Internet connection at router.
_____ or 169.254..x.x	Wireless connection to a router OK but problem with the router. See the online help or <i>User Manual</i> for troubleshooting tips.

Windows 2000 Installation

1. First, install the WN511T software.

Insert the NETGEAR CD. If the CD main page does not appear, double click **Autorun.exe** on the CD.



- Click the **Install Software** link. The Check for Updates options will open.
- If you are connected to the Internet, click **Check for Updates**. If not, you can choose to install from the CD.
- When the Installation Complete message appears, click **Next**.
- On the SmartWizard screen, click **Next** to proceed with the SmartWizard setup.

2. Now, insert the wireless notebook adapter.

- When prompted, insert your wireless notebook adapter.
- Click **Next** to proceed. Windows will discover the adapter and continue the software installation process.



Follow the Windows prompts to complete the software installation.

If a Windows logo certification warning appears, click Continue to proceed with the installation.

- When the Windows software installation is complete, click Finish.

3. Use the Smart Wizard to set up your WN511T.

- You will be prompted to let the wizard help you select a network (recommended).

Note: If you choose the manual configuration option, then you must read the product manual for instructions.

Click **Next** to accept.




- Select the wireless network from the drop-down list, and the wizard records your choice.

Note: Hidden networks do not broadcast the Network Name (SSID). These networks are included in the drop-down list, but the Network Name (SSID) is blank.



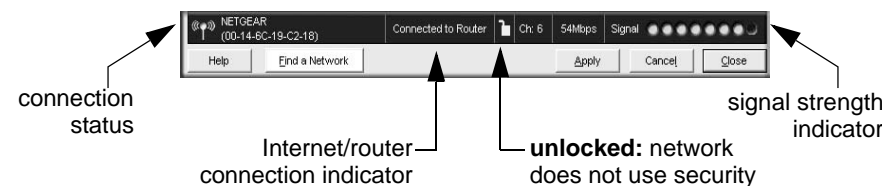
- The Smart Wizard will detect if the network uses security or not. Follow the Wizard steps for Security (if used) and for saving a Profile.

- After you have reviewed the settings, click **Finish**.

The WN511T icon  appears in the system tray and on the desktop, and the Settings page opens. The wizard initiates your wireless connection. It could take up to a minute for your wireless connection to be established.

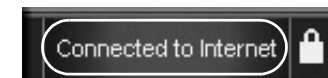
4. Use the status bar to verify your wireless connectivity.

The status bar is located at the bottom of the Settings page.



- The connection status indicator  and the WN511T icon  show the status of the connection.

- For details about the icons in the status bar, the WN511T LEDs, and troubleshooting tips, see the *User Manual* on the NETGEAR CD.
- The Internet/Router connection indicator shows the progress of your connection.



Connection Indicator	Description
Connected to Internet	Wireless Internet connection OK.
Connected to Router	Wireless connection to router OK but no Internet connection at router.
_____._____._____._____. or 169.254..x.x	Wireless connection to a router OK but problem with the router. See the online help or <i>User Manual</i> for troubleshooting tips.

Technical Support

Thank you for selecting NETGEAR products.

After completing the Smart Wizard configuration assistant, locate the serial number on the bottom label of your product and use it to register your product at <http://www.NETGEAR.com/register>.

Registration on the Web site or over the phone is required before you can use our telephone support service. The phone numbers for worldwide regional customer support centers are on the Warranty and Support Information card that came with your product.

Go to <http://kbserver.netgear.com> for product updates and Web support.



This symbol was placed in accordance with the European Union Directive 2002/96 on the Waste Electrical and Electronic Equipment (the WEEE Directive). If disposed of within the European Union, this product should be treated and recycled in accordance with the laws of your jurisdiction implementing the WEEE Directive.



201-10853-02

April 11, 2006

Free Manuals Download Website

<http://myh66.com>

<http://usermanuals.us>

<http://www.somanuals.com>

<http://www.4manuals.cc>

<http://www.manual-lib.com>

<http://www.404manual.com>

<http://www.luxmanual.com>

<http://aubethermostatmanual.com>

Golf course search by state

<http://golfingnear.com>

Email search by domain

<http://emailbydomain.com>

Auto manuals search

<http://auto.somanuals.com>

TV manuals search

<http://tv.somanuals.com>