

Getting Started

Does your WiFi router have a WPS button?

Wi-Fi Protected Setup (WPS) is an easy way to connect WiFi devices. The button might look like one of these:



Yes

1. Attach the antennas.

Attach the antennas to the antenna connector by turning the antennas clockwise. Bend and rotate the antennas into position. Double check that the antennas are properly tightened.

2. Turn on your extender.

Place the extender close to your WiFi router. Plug the extender into an electrical outlet. Press the **Power** button if necessary.

3. Connect to your WiFi router.

Press the **WPS** button on the extender. The Link Rate LEDs and Device to Extender LED blink green. Within two minutes, press the **WPS** button on your WiFi router. After a few seconds, the 2.4 GHz Link Rate LED lights green, indicating a good connection between your WiFi router and your extender.

If the 2.4 GHz Link Rate LED does not light, or the LED is blinking amber, try again. If the LED still do not light, follow the instructions for No WPS button on the right.

4. Add a WiFi band.

If your WiFi router supports the 5 GHz band (not all routers do), and you want to extend that band, repeat Step 2 and check that the 5 GHz Link Rate LED lights green to confirm the connection.

5. Choose a location and check the signal strength.

Now that the extender is connected to your WiFi router, you can move it to a location that will boost your WiFi range. The location you choose must be within the range of your existing WiFi router network. Plug the extender into an electrical outlet.

The Link Rate LEDs help you choose a spot where the extender-to-router connection is optimal. See the Indicator LEDs section on the back to learn how the LEDs show the best connection. If you get no connection or a poor connection, move the extender closer to your WiFi router and try again until the 2.4 GHz or 5 GHz Link Rate LED lights green.

6. Connect your WiFi devices.

Take your WiFi device to the location with poor WiFi router coverage. Find the new extender network name:

Existing network name: MyNetworkName
New extended network name: MyNetworkName_2GEXT
or
MyNetworkName_5GEXT

Select the new network and use your WiFi router password to connect. You are now using your extended WiFi network.

No (or not sure)

1. Attach the antennas.

Attach the antennas to the antenna connector by turning the antennas clockwise. Bend and rotate the antennas into position. Double check that the antennas are properly tightened.

2. Turn on your extender.

Place the extender close to your WiFi router. Plug the extender into an electrical outlet. Press the **Power** button if necessary.

3. Connect to the extender.

On a computer, tablet, or smartphone, open the WiFi connection manager and connect to the extender network called **NETGEAR_EXT**. When you are connected to the extender, the Device to Extender LED lights solid green.

4. Set up with NETGEAR genie.

Open a web browser. You are automatically taken to NETGEAR genie®, which guides you through the following steps.

Note: If you are not automatically directed to NETGEAR genie, go to **www.mywifiext.net**. If a login screen displays, enter **admin** for the user name and **password** for the password.

- Select your existing WiFi router's network.
- Enter your password for your WiFi router's network.
- Choose a name for the extender WiFi network.
You can accept the default network name (MyNetworkName_EXT) or rename the network.

5. Choose a location and check the signal strength.

Now that the extender is connected to your WiFi router, you can move it to a location that will boost your WiFi range. The location you choose must be within the range of your existing WiFi router network. Plug the extender into an electrical outlet.

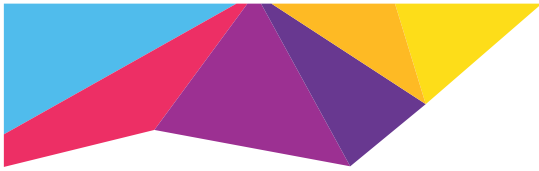
The Link Rate LEDs help you choose a spot where the extender-to-router connection is optimal. See the Indicator LEDs section on the back to learn how the LEDs show the best connection. If you get no connection or a poor connection, move the extender closer to your WiFi router and try again until the 2.4 GHz or 5 GHz Link Rate LED lights green.

6. Connect your WiFi devices.

Take your WiFi device to the location with poor WiFi router coverage. Find the new extender network name:

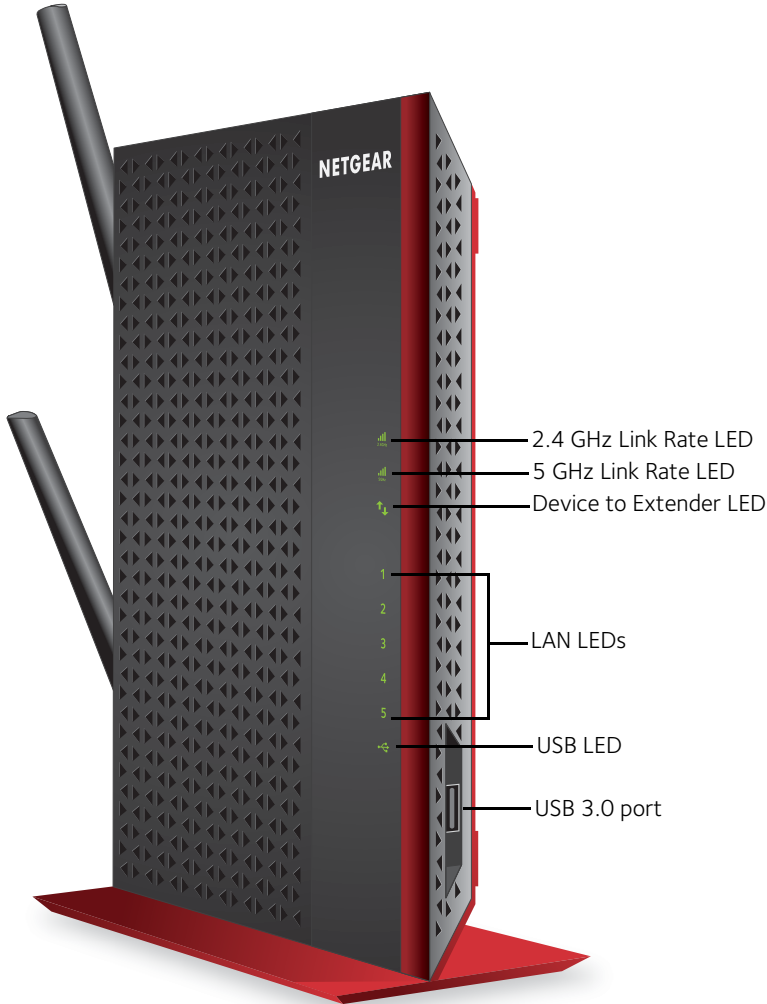
Existing network name: MyNetworkName
New extended network name: MyNetworkName_2GEXT
or
MyNetworkName_5GEXT

Select the new network and use your WiFi router password to connect. You are now using your extended WiFi network.

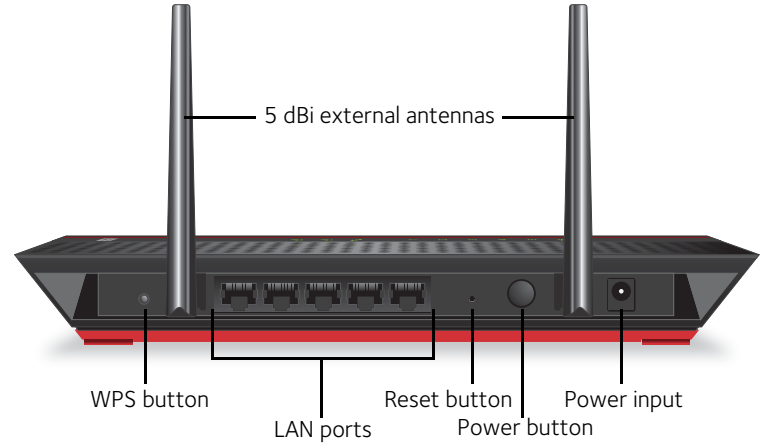


Hardware

Front panel



Rear panel



Indicator LEDs

- 2.4 GHz Link Rate LED
 - Solid green.** Best connection
 - Solid amber.** Good connection
 - Solid red.** Poor connection
 - Off.** No connection
- 5 GHz Link Rate LED
 - Solid green.** Best connection
 - Solid amber.** Good connection
 - Solid red.** Poor connection
 - Off.** No connection
- Device to Extender LED
 - Solid green.** The extender and device are connected.
- LAN LEDs
 - Solid green.** The LAN port has detected an Ethernet link with the extender.
- USB LED
 - Solid green.** A USB device is connected to the extender.

Support

After installing your extender, locate the serial number on the label and use it to register your product at <https://my.netgear.com>. You must register your product before you can use NETGEAR telephone support. NETGEAR recommends registering your product through the NETGEAR website. For product updates and web support, visit <http://support.netgear.com>.

You can get the user manual online at <http://downloadcenter.netgear.com> or through a link in the product's user interface. NETGEAR recommends that you use only the official NETGEAR support resources.

For the current EU Declaration of Conformity, visit: http://support.netgear.com/app/answers/detail/a_id/11621/.
For regulatory compliance information, visit <http://www.netgear.com/about/regulatory/>.
See the regulatory compliance document before connecting the power supply.

NETGEAR, the NETGEAR logo, and Connect with Innovation are trademarks and/or registered trademarks of NETGEAR, Inc. and/or its subsidiaries in the United States and/or other countries. Information is subject to change without notice. Other brand and product names are registered trademarks or trademarks of their respective holders. © NETGEAR, Inc. All rights reserved.



Free Manuals Download Website

<http://myh66.com>

<http://usermanuals.us>

<http://www.somanuals.com>

<http://www.4manuals.cc>

<http://www.manual-lib.com>

<http://www.404manual.com>

<http://www.luxmanual.com>

<http://aubethermostatmanual.com>

Golf course search by state

<http://golfingnear.com>

Email search by domain

<http://emailbydomain.com>

Auto manuals search

<http://auto.somanuals.com>

TV manuals search

<http://tv.somanuals.com>