

Quick Start

NETGEAR®

N600 WiFi USB Adapter

Model WNDA3100v3

Package Contents



Adapter



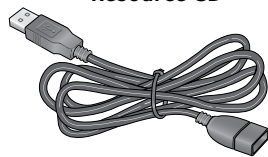
Resource CD



Plastic cradle



Fasteners



USB cable

Set Up NETGEAR genie

You can set up NETGEAR genie and use it to join a WiFi network. If you do not want to use NETGEAR genie, you can install a Windows standalone driver and use the Windows WLAN Autoconfig service or the Wireless Zero Configuration service to join a WiFi network. For more information, see [Install Windows Standalone Driver](#).

1. Insert the resource CD in your computer CD drive.

Note: If your computer does not include a CD drive, download the WNDA3100v3 resource CD driver by visiting <http://support.netgear.com>. Click the **Support For Home** button and enter **WNDA3100v3** in the search field.

If the Resource CD screen does not display, browse the files on the CD and double-click the **Autorun.exe** file.

The NETGEAR Resource CD screen displays.

2. Click the **Setup** button.
The Software Update Check screen displays.
3. Install the setup software using one of the following methods.
 - **Connected to the Internet.** If you are connected to the Internet, click the **Check for Updates** button. After the software checks for updates, the Update Check Complete screen displays. Click the **Continue** button. The Welcome screen displays.
 - **Not connected to the Internet.** If you are not connected to the Internet, click the **Install from CD** button. The Welcome screen displays.
4. To accept the license agreement, select the **I agree** radio button and click the **Next** button.

A message displays asking you to wait while software is installed. After a few minutes, NETGEAR genie prompts you to insert your adapter.



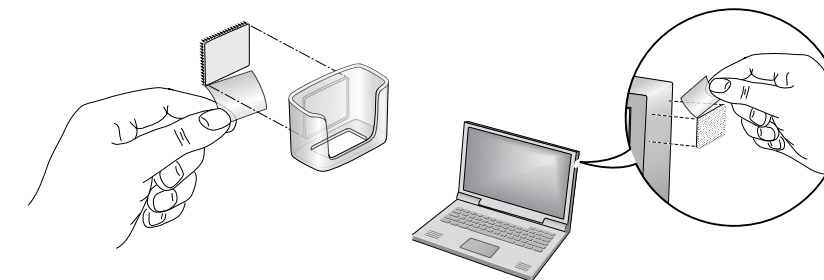
5. Insert the adapter into a USB port on your computer with or without the USB cable and plastic cradle.

Note: The USB cable and plastic cradle can extend the range of your adapter and improve WiFi reception.

To use the adapter with the USB cable and plastic cradle:

- a. Place a fastener on the back of the plastic cradle and place another fastener on your computer.

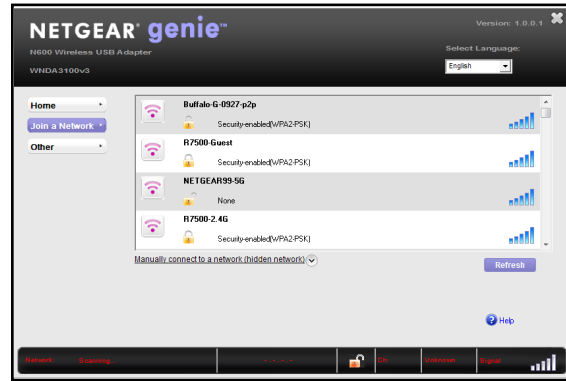
Make sure that the surfaces on which you are placing the fasteners are clean and dry.



- b. Insert the adapter into the plastic cradle.
- c. Connect the USB cable to the adapter.
Note: NETGEAR recommends using the USB cable that is supplied in the package. Do not use another USB cable to connect the adapter to the USB port on your computer. Using another USB cable might affect the performance and correct functioning of the adapter.
- d. Connect the USB cable to a USB port on your computer.
- e. Join the fasteners together.



- Return to the NETGEAR genie screen and click the **Next** button. NETGEAR genie displays a list of WiFi networks in your area.



Install Windows Standalone Driver

For Windows 8.1, Windows 8, Windows 7, and Windows Vista, you can install the Windows standalone driver without NETGEAR genie and use the Windows WLAN Autoconfig service to join a WiFi network. If you use Windows XP, you can install the Windows standalone driver and use the Wireless Zero Configuration service to join a WiFi network.

- Insert the resource CD in your computer CD drive.

Note: If your computer does not include a CD drive, download the WDA3100v3 resource CD driver by visiting <http://support.netgear.com>. Click the **Support For Home** button and enter **WDA3100v3** in the search field.

If the Resource CD screen does not display, browse the files on the CD and double-click the **Autorun.exe** file.


The NETGEAR Resource CD screen displays.

- Click the **Install Windows Standalone Driver** button. The driver installs on your computer.
- When prompted, insert the adapter into a USB port on your computer.

Join a WiFi Network

You can join a WiFi network from NETGEAR genie, or you can use Wi-Fi Protected Setup (WPS) if your WiFi router supports it.

Join a Network Using NETGEAR genie

- Insert the adapter into a USB port on your computer.
- Click the adapter's **NETGEAR genie** icon  that displays on the Windows systems tray or on the desktop. The NETGEAR genie Home screen displays.
- Click the **Join a Network** button.
- Select a WiFi network.
- Click the **Connect** button.
- If the network is secure, enter its password or network key.

The adapter joins the network, which can take a few minutes. Your settings are saved in a profile.

The adapter LED lights amber for a 2.4 GHz WiFi connection and blue for a 5 GHz WiFi connection.

Join a Network Using WPS

- Press and hold the **WPS** button on the adapter for two seconds. The adapter LED blinks.






- Within two minutes, press the **WPS** button on your WiFi router or gateway.

The adapter joins the network, which can take a few minutes. Your settings are saved in a profile.

The adapter LED lights amber for a 2.4 GHz WiFi connection and blue for a 5 GHz WiFi connection.

Check Your Connection Status

When you install your adapter, the adapter's **NETGEAR genie** icon displays in the Windows system tray and on the desktop. You can double-click this icon to open NETGEAR genie to make changes or connect to a different WiFi network. The color of the icon indicates the strength of your WiFi connection:

-  **White.** Strong connection
-  **Yellow.** Weak connection
-  **Red.** No connection

If you remove your adapter, NETGEAR genie is not available, so the icon does not display. When you insert the adapter again, the icon returns.

Support

Thank you for purchasing this NETGEAR product. After installing your device, locate the serial number on the label of your product and use it to register your product at <https://my.netgear.com>.

You must register your product before you can use NETGEAR telephone support. NETGEAR recommends registering your product through the NETGEAR website.

For product updates and web support, visit <http://support.netgear.com>. NETGEAR recommends that you use only the official NETGEAR support resources.

You can get the user manual online at <http://downloadcenter.netgear.com> or through a link in the product's user interface.

For the complete EU Declaration of Conformity, visit http://support.netgear.com/app/answers/detail/a_id/11621/.

For regulatory compliance information, visit <http://www.netgear.com/about/regulatory/>.

See the regulatory compliance document before connecting the power supply.

NETGEAR, the NETGEAR logo, and Connect with Innovation are trademarks and/or registered trademarks of NETGEAR, Inc. and/or its subsidiaries in the United States and/or other countries. Information is subject to change without notice. © NETGEAR, Inc. All rights reserved.



October 2014

NETGEAR, Inc.
350 East Plumeria Drive
San Jose, CA 95134, USA

Download from www.Somanuals.com. All Manuals Search And Download.

Free Manuals Download Website

<http://myh66.com>

<http://usermanuals.us>

<http://www.somanuals.com>

<http://www.4manuals.cc>

<http://www.manual-lib.com>

<http://www.404manual.com>

<http://www.luxmanual.com>

<http://aubethermostatmanual.com>

Golf course search by state

<http://golfingnear.com>

Email search by domain

<http://emailbydomain.com>

Auto manuals search

<http://auto.somanuals.com>

TV manuals search

<http://tv.somanuals.com>