



U s e r ' s M a n u a l



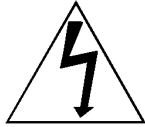
M o d e l

S W 1 0 1 1

S W 1 2

P o w e r e d S u b w o o f e r

IMPORTANT SAFETY INSTRUCTIONS



CAUTION

RISK OF ELECTRIC SHOCK
DO NOT OPEN



CAUTION: TO REDUCE RISK OF ELECTRICAL SHOCK, DO NOT REMOVE COVER (OR BACK). NO USER SERVICEABLE PARTS INSIDE. REFER TO QUALIFIED SERVICE PERSONNEL.



The lightning flash with the arrowhead symbol, within an equilateral triangle, is intended to alert the user to the presence of uninsulated "dangerous voltage" within the product's enclosure that may be of sufficient magnitude to constitute a risk of electric shock to persons.



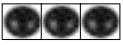
The exclamation point within an equilateral triangle is intended to alert the user to the presence of important operating and maintenance (servicing) instructions in the literature accompanying the appliance.

WARNING: TO REDUCE THE RISK OF FIRE OR ELECTRIC SHOCK, DO NOT EXPOSE THIS APPLIANCE TO RAIN OR MOISTURE.

1. READ INSTRUCTIONS - All safety and operating instructions should be read before the appliance is operated.
2. RETAIN INSTRUCTIONS - Safety and operating instructions should be retained for future reference.
3. HEED WARNINGS - All warnings on the appliance and in operating instructions should be adhered to.
4. FOLLOW INSTRUCTIONS - All operating and use instructions should be followed.
5. WATER AND MOISTURE - The appliance should not be used near water - near bathtub, washbowl, kitchen sink, laundry tub; in a wet basement near a swimming pool, etc.
6. CARTS AND STANDS - Do not place this product on an unstable cart, stand, tripod, bracket, or table. The appliance should be used only with a cart or stand that is recommended by the manufacturer.
7. VENTILATION - The appliance should be situated so that its location and position do not interfere with proper ventilation. The appliance should not be situated on a bed, sofa, rug, or any surface that may obstruct cabinet openings.
8. HEAT - The appliance should be situated away from heat sources such as radiators, heat registers, stoves, or other devices (including amplifiers) that produce heat.
9. POWER SOURCES - This product should be operated only from the type of power source indicated on the marking label. If you are not sure of the type power supply in your home, consult your product dealer or local power company. For products intended to operate from battery power or other sources, refer to the operating instructions.
10. POWER CORD PROTECTION - Power supply cords should be routed so that they are not likely to be walked upon or pinched by items placed upon or against them, paying attention to cords and plugs, convenience receptacles, and the point where they exit from the appliance.
11. POLARIZED PLUG - This appliance is equipped with a polarized line plug (a plug having one blade wider than the other). This plug will fit into the power outlet only one way. This is a safety feature. If you are unable to insert the plug fully into the outlet, try reversing the plug. If the plug still fails to fit, contact your electrician to replace your obsolete outlet. Do not attempt to defeat this safety feature.
12. LIGHTNING - For added protection for this product during a lightning storm, or when it is left unattended and unused for long periods of time, unplug it from the wall outlet and disconnect the antenna or cable system. This will prevent damage to the product due to lightning and power line surges.
13. OVERLOADING - Do not overload wall outlets, extension cords, or integral convenience receptacles, as this can result in a risk of fire or electric shock.
14. CLEANING - Unplug this product from the wall outlet before cleaning. Do not use liquid cleaners or aerosol cleaners. Use a damp cloth for cleaning.
15. NON-USE PERIODS - This amplifier should be unplugged from the outlet when the appliance is left unused for a long period of time.
16. OBJECT AND LIQUID ENTRY - Never push objects of any kind into this product through openings, as they may touch dangerous voltage points or short-out parts that could result in a fire or electric shock. Never spill liquid of any kind on this product.
17. DAMAGE REQUIRING SERVICE - The appliance should be serviced by qualified personnel when:
 - a. The power supply cord or plug has been damaged; or
 - b. Objects have fallen on or liquid has been spilled into the appliance; or
 - c. The appliance has been exposed to rain; or
 - d. The appliance does not appear to operate normally or exhibits a marked change in performance; or
 - e. The appliance has been dropped or the enclosure is damaged.
18. SERVICING - Do not attempt to service this product yourself, as opening or removing covers may expose you to dangerous voltage or other hazards. Refer all servicing to qualified service personnel. For service warranty information call the NHT Hotline number: 1-800-NHT-9993.
19. REPLACEMENT PARTS - When replacement parts are required, be sure the service technician has used replacement parts specified by the manufacturer or that have the same characteristics as the original part. Unauthorized substitution may result in fire, electric shock, or other hazards.
20. SAFETY CHECK - Upon completion of any service or repairs to this product, ask the service technician to perform safety checks to determine that the product is in proper operating condition.

CAUTION

TO PREVENT ELECTRIC SHOCK, DO NOT USE THIS (POLARIZED) PLUG WITH AN EXTENSION CORD, RECEPTACLE OR OTHER OUTLET UNLESS THE BLADES CAN BE FULLY INSERTED TO PREVENT BLADE EXPOSURE.



Thank you for your purchase of the NHT SW 10 or SW 12 powered subwoofer.

Like all NHT budspeakers, the SW 10 II and SW 12's development has been guided by the study of human hearing, its design rigorously tested, and its components optimized to deliver clean, clear musical sound.

Since the quality of your speakers is one of the most important factors in maximizing the sound you'll get from your music and home theater system, we're sure that you'll find your purchase of the SW 10 II and SW 12 a good investment, and invite your comments.

If you find your experience with the SW 10 II and SW 12 as satisfying as we believe you will, and wish to enjoy its high quality sound through your entire system, you'll find information about other sonically matched NHT Super Series budspeakers on the back of this manual.

Background

The NHT SW 10 II and SW 12 Powered Subwoofer is a compact, versatile and powerful amplified subwoofer designed to provide low frequency reinforcement for high performance audio and home theater systems.

The SW 10 II and SW 12 features:

- line-level and speaker-level inputs, for connection with all types of receivers or other audio components
- independent gain, phase and low pass filter controls
- boundary control for adjusting system sound for various room placement

Please take a few minutes to read through this owner's manual before setting up your speakers; this information will help you get the most out of them. Also, please keep the SW 10 II or SW 12's packaging to use in case you move or transport them.

If you have questions at any time during setup or use, feel free to call your NHT dealer or our Toll-Free Customer Hotline at 1-800-NHT-9993.

Placement

Note: To prevent the SW 10 II and SW 12 subwoofer amplifier from overheating, always be sure to provide adequate space for proper ventilation. Do not place the subwoofer directly against the wall or any other surface.

The key to placing your subwoofer for optimal enjoyment

is to remember that low frequencies produce sounds with long wavelengths, which interact in complex ways with room boundaries, such as walls and corners, and other large objects as well.

Placing the subwoofer near to a room boundary will tend to increase its apparent bass output, but may result in "boomy" or "muddy" sound. Conversely, placing it farther away from room boundaries will tend to decrease its apparent bass output, but may result in improved articulation and clarity.

When possible, place the subwoofer in the same horizontal plane and along the same wall as the main speakers.

And since small changes in subwoofer position can have a significant effect on sound, experimenting with the effects of different placements in your own listening/viewing room is the key to finding the sound you like best.

SW 10 II and SW 12 Features & Controls

Volume: This control allows you to adjust the gain of the Subwoofer relative to the rest of your system. Many listeners make the mistake of setting subwoofers too low, which can cause excess bass and loss of detail and musicality. A properly calibrated subwoofer blends in with the speakers and does not call attention to itself. To properly set volume:

- Turn down the volume control on the SW 10 II or SW 12 to its lowest position (counter-clockwise).
- Turn on your audio system, including the SW 10 II or SW 12. Play some music you are familiar with and set your receiver/preamplifier volume to a comfortable listening level.
- Slowly increase the volume of the SW 10 II or SW 12, listening for proper frequency balance. When balanced, you will hear improved bass extension, but not be aware that it is coming from the subwoofer.

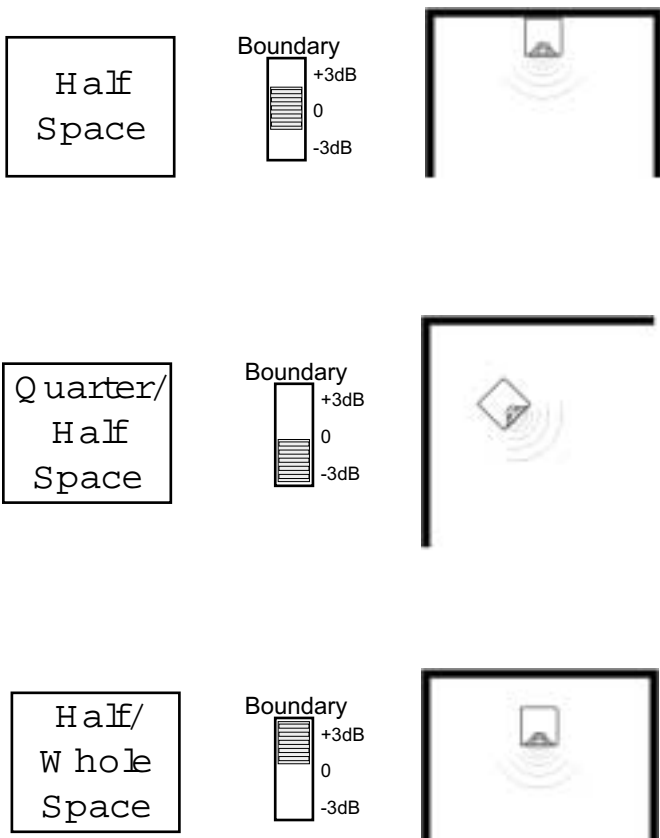
From this point on, the volume control on your receiver/preamplifier will control the overall volume of your system, including the subwoofer.

The Boundary EQ: This is a feature unique to NHT Evolution products. Reflective boundaries (such as walls) reinforce a speaker's bass output (3dB for two walls, 6dB for a corner) if the subwoofer is placed near them. Conversely, placing a subwoofer out in the room results in a relative decrease in bass output. Boundary reinforcement may lead to low frequency response that

is uneven. Some frequencies will sound exaggerated relative to others, or the subwoofer will sound thin and lack in pact. The Boundary EQ control allows you to compensate for the effects of room boundaries on the frequency response of the subwoofer. Adjusting the control enables you to achieve smooth low frequency output from the subwoofer regardless of its location in your room.

The following diagrams shown in Fig. 1 show the correlation between subwoofer placement and Boundary EQ. These diagrams are guidelines only. Your room acoustics and personal tastes will ultimately dictate the final setting.

Fig. 1



LOW PASS FILTER: This control determines the upper limit frequency the subwoofer will reproduce. For example, setting the filter at 100Hz will cause the subwoofer to reproduce only frequencies below 100Hz. The Low Pass Filter is continuously variable between 40Hz (low bass) and 180Hz (upper bass), to accommodate different speakers.

Two tips on using the Low Pass Filter:

As a starting point, set Low Pass Filter to the 1 o'clock position. This will result in an 80Hz low pass. As the setting is typical for most Dolby Digital/DTS applications. Note: The LFE input bypasses the adjustable 12dB Low Pass Filter.

See the Fine-Tuning section for further adjustment guidelines.

SUBWOOFER PHASE: This switch sets the phase of the subwoofer at either the 0° position (normal phase) or the 180° position (reverse phase) to achieve the smoothest possible bass response in your system.

This phase-reversing option is important because if bass frequencies come from both the subwoofer and the main speakers, peaks and dips in the frequency response can occur at the listening position. In these cases, reversing the subwoofer phase can improve blending and balance.

To properly set the Subwoofer Phase:

- Play familiar music, reversing phase settings. And listen from your usual position.
- Avoid evaluating while standing above the subwoofer or amplifier; sound at the listening position will be significantly different.
- The correct setting is the one in which the bass is the loudest at the listening position.

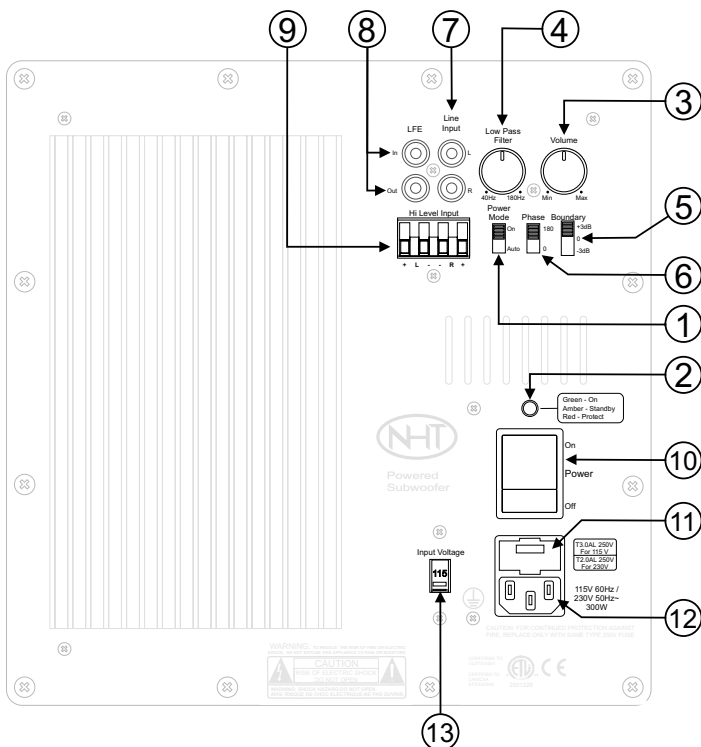
POWER MODE: This feature automatically switches your SW 11 or SW 12 into minimum power mode (i.e., sleep) whenever no signal is present for 20 minutes. When a signal is received, it immediately turns on again. As AUTOMODE is automatic, it requires no adjustment, nor is there a need to turn the SW 11 or SW 12 on and off every time it is used. When in ON Mode, the subwoofer is always on.

Connecting The SW 10II OR SW 12

Caution: Before connecting the SW 10II OR SW 12 to your audio system, it is important to unplug or turn off all AC power connections to connected components such as receivers, amplifiers, preamplifiers, and processors. Do not plug in or connect the SW 10II OR SW 12 subwoofer to AC power until all connections have been made.

Integrating the SW 10II or SW 12 into your surround system is simple and straightforward when using this connection method. Your AV Receiver will control all crossover functions and the SW 10II or SW 12 will control Subwoofer gain, phase and boundary equalization.

Connect the Subwoofer/LFE Output on your AV Receiver to the LFE IN on the back of the SW 10II or SW 12. (Fig. 2)



Back of Subwoofer (refer to diagram above)

(1) Power Mode - Leaves Subwoofer in permanently on (ON), or puts the subwoofer in automatic standby mode (AUTO).

(2) Power Indicator - The light is green when the subwoofer is on. The light is amber when the subwoofer is in stand-by mode. The light is red when the subwoofer is in protection.

(3) Volume Control - Adjusts the loudness of the subwoofer independently of the main speakers.

(4) Low Pass Filter - Continuously variable low-pass crossover control.

(5) Boundary Switch - Selects response mode of subwoofer, depending on placement.

(6) Subwoofer Phase Selector - 2-position selectable phase control for subwoofer. (0 - 180)

(7) Line Input - Low level RCA input jacks for L/R signals

(8) LFE In/Out - Low level RCA input jack for LFE or subwoofer signal. Out is an unbuffered pass through used for multiple subwoofers.

(9) Hi Level Input - Speaker level input connector.

(10) Power Switch - Turns the unit on and off

(11) Fuse Holder - Location of the user serviceable fuse

(12) Power Inlet - For universal AC line input connection

(13) Input Voltage Switch - Selects 115 VAC or 230 VAC mains voltage.

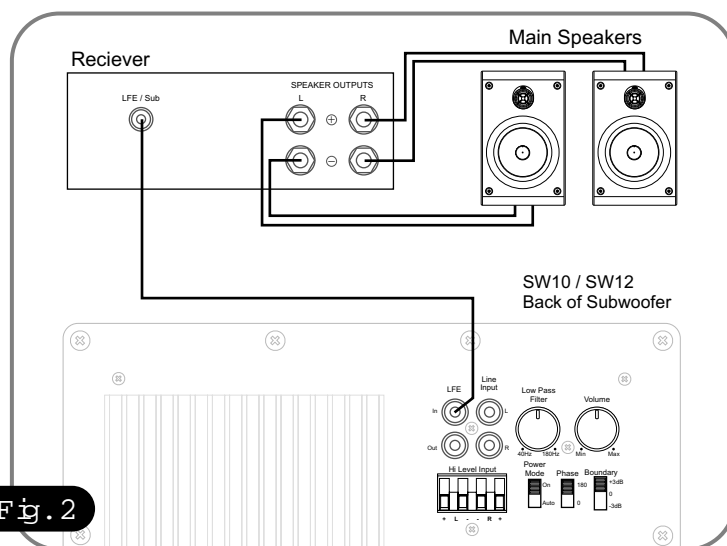


Fig. 2

In the event your receiver or pre-amp does not have a LFE or Subwoofer output the SW 10II/SW 12 has two additional connection methods:

1) Line Level

Use if:

You have an amp or receiver with Pre-Out jacks but no LFE/Subwoofer jacks.

To connect for a Line Level signal (Fig. 3), keep your main speakers connected as usual, but use RCA line-level cables to connect as follows:

- **Preamps with Line Out jacks:** connect one pair of Line Out cables to your main amp to power your main L & R speakers, and a second pair to the SW 10II OR SW 12's HIGH-LEVEL INPUT. If your preamp has only one pair of Line Out jacks, you can use a pair of "Y" connector cords, available through your NHT dealer.

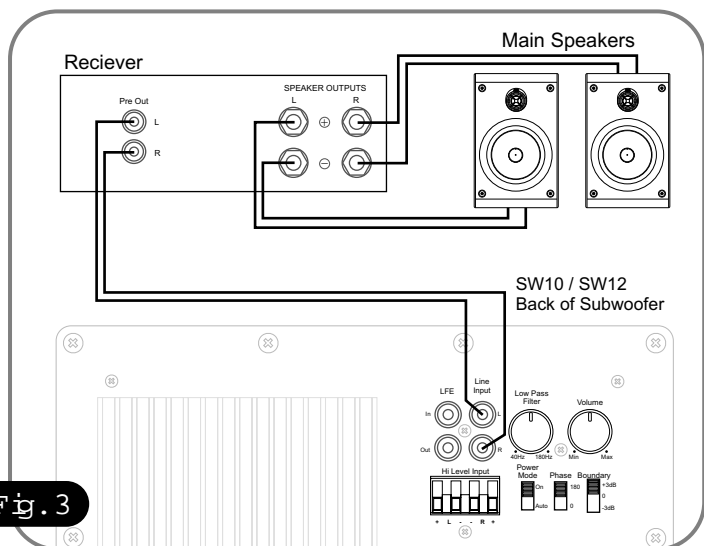


Fig. 3

- **Amps and receivers with Pre-Out jacks:** connect the SW 10II OR SW 12 from the Pre-Out into the SW 10II OR SW 12's Line Input.

2) HiLevel

Use if:

Your receiver has no Pre Out or Subwoofer/LFE Out jacks

To connect for a High-Level signal (Fig. 4), use two additional pairs of speaker cables, and connect as follows:

- For amps and receivers with separate A and B speaker outputs, connect one pair of speaker cables from your receiver's Speaker A outputs to your main L & R speakers, and a second pair from your receiver's Speaker B outputs to the SW 10II OR SW 12's High-Level Input. Use this method only if both A & B speaker outputs can operate simultaneously.

- For amps and receivers with only one set of speaker output terminals, simply feed the same signal, in parallel, to both your main L & R speakers and the SW 10II OR SW 12. Connect one pair of speaker cables from your

components speaker output terminals to the L & R speakers, and a second pair from the same output terminals to the SW 10II OR SW 12's High-Level input. The SW 10II OR SW 12's input does not present a significant load to the receiver, and will not compromise its output to the L & R speakers. If you find that your receiver will not accommodate more than one cable per output terminal, check with your NHT dealer for alternative methods of connection.

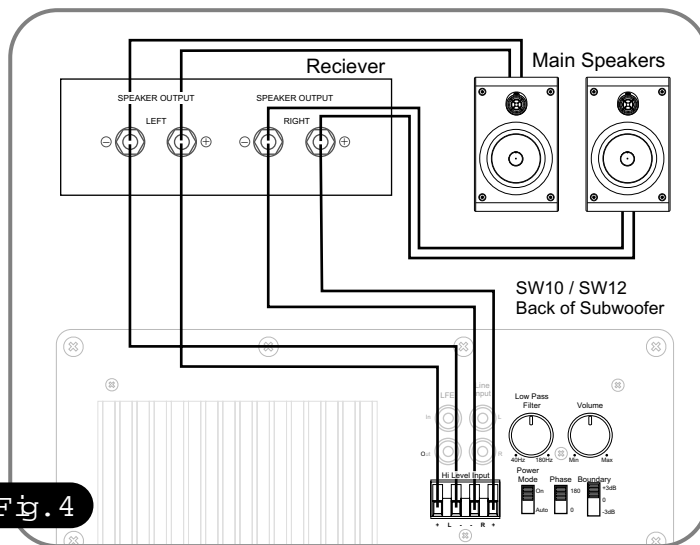


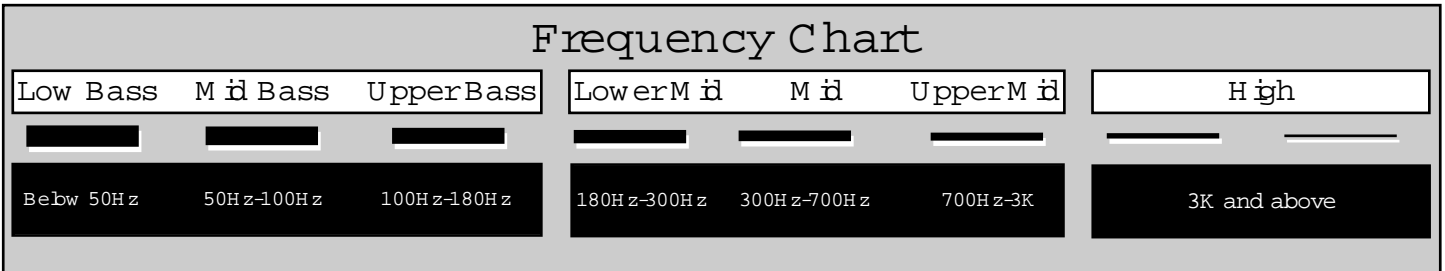
Fig. 4

With all signal connections complete, it is now time to apply AC power. Plug the power chord into the power inlet in the back of the subwoofer, plug the other end into the wall outlet and switch the subwoofers power to the ON position.

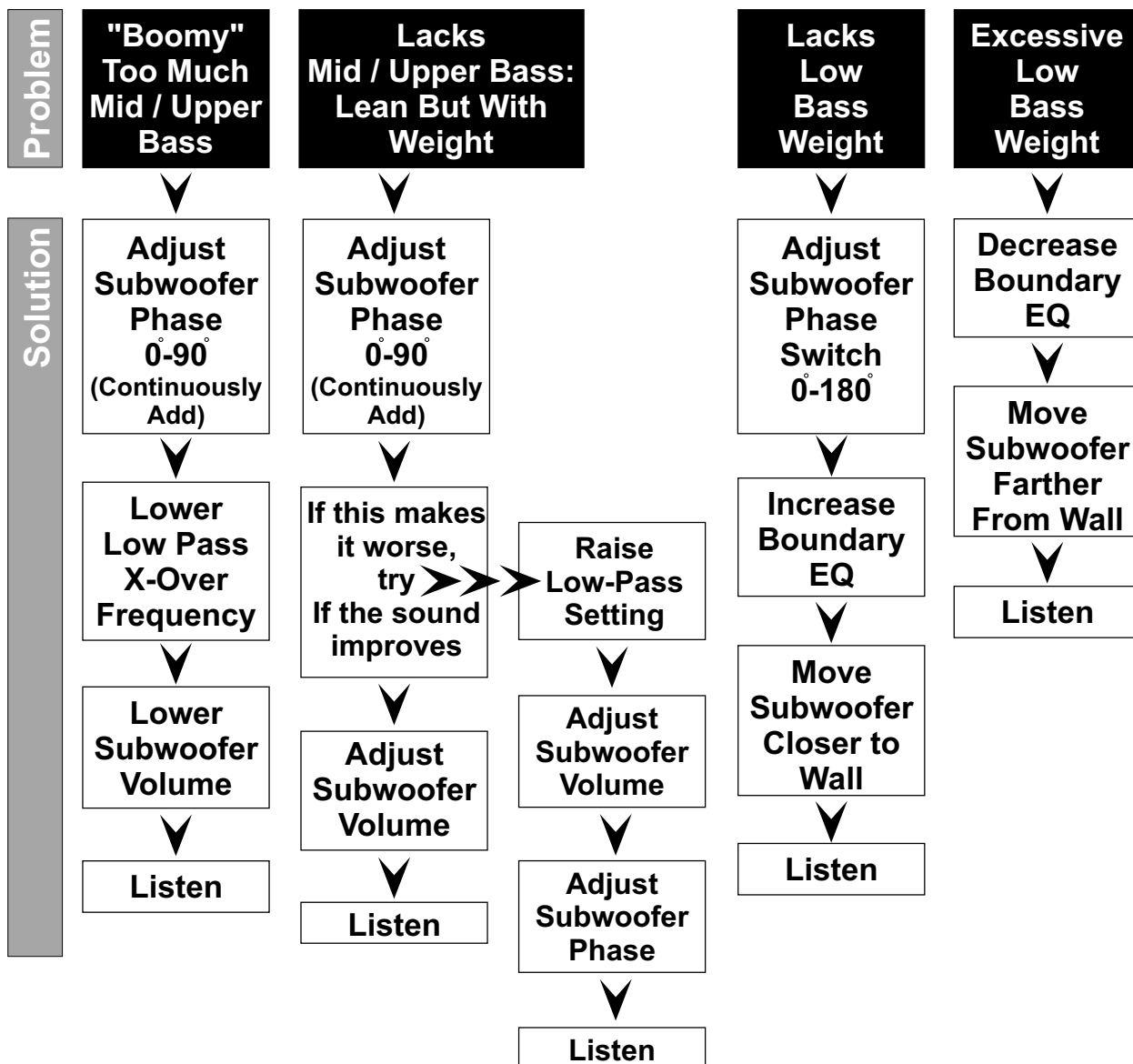
Fine Tuning the Subwoofer

The key to good subwoofer / speaker integration is repeated listening, followed by making small re-adjustments of the subwoofer controls. The most important bass tuning functions you will control are the LOW-PASS FILTER, followed by the VOLUME CONTROL settings and then PHASE SELECTOR.

The frequency chart below lists some terms commonly used to describe different bands of the frequency spectrum. Listen to your system and make adjustments to achieve a seamless blend between your main speakers and the SW 10 or SW 12. Four common problems are outlined below. Follow the flow chart to correct these. See the glossary for any terms you are unfamiliar with.



Fine Tuning Flow Chart



Operation

We recommend that the SW 10 II or SW 12 power be left on, which will allow the built-in Auto Mode feature to disable the subwoofer when not in use.

Every speaker has limits, and it's important to listen for them. Speaker damage most often results not from brief but musical peaks, but from sustained high volume levels in some or all frequencies. For this reason, extreme volume settings and excessive bass, treble or equalizer boosts are not recommended.

If you hear unusual distortion or breakup, or notice heat coming from the woofer, decrease volume immediately, neutralize any excess bass, treble or equalizer boosts, and avoid setting any controls to similar extremes again.

Maintenance

Your SW 10 II and SW 12 is designed for years of use with no normal maintenance, as long as you avoid exposing it to direct sunlight, high temperatures, or moisture. Clean cabinets, when necessary, using a damp cloth or a mild, non-abrasive cleaner; to clean grilles, remove from speaker and use a soft brush or a vacuum on its lowest setting. Do not attempt to clean the actual driver.

9.8 Changing the Line Voltage Setting

The SW 10 II and SW 12 were designed to operate on two line voltage settings, 115VAC and 230VAC. In the event that it is necessary to change the line voltage setting, begin by turning the power switch to the off position. Remove all the connections from the amplifier, including the detachable power cord. Using a flat blade screwdriver, slide the switch to the correct position. Use the 115VAC position for 110 to 120 VAC, and the 230VAC position for 220 to 240 VAC. Next you will likely need a power cord that fits the AC receptacle and you will need to replace the fuse (see "Changing the Fuse" below)

Changing the Fuse

The SW 10 II and SW 12 amplifier's fuse is user-serviceable.

To replace it:

- turn the power OFF
- unplug the power cord
- remove the fuse holder cover (above to the power inlet) with a flat blade screwdriver
- remove the fuse from the holder and replace it with the

appropriate type.

- reinstall the fuse holder

Always replace the fuse with one of the exact same specifications.

SW 10 II:

For systems operating at 115 volts, use only a 5x20 mm, T3A, 250-volt sbw-bbw fuse.

For systems operating at 230 volts, use only a 5x20 mm, T2.0A, 250-volt sbw-bbw fuse.

SW 12:

For systems operating at 115 volts, use only a 5x20 mm, T5A, 250-volt sbw-bbw fuse.

For systems operating at 230 volts, use only a 5x20 mm, T2.5A, 250-volt sbw-bbw fuse.

Troubleshooting

If the SW 10 II or SW 12 fails to operate at all when the Power Switch is turned on, thoroughly check the power cord, input and output connections

If the SW 10 II or SW 12 turns on but the LED indicator fails to illuminate, mis-wiring or a power surge may have caused the protection fuse to blow. Replace it with one of correct type and value.

If the SW 10 II or SW 12 turns on but its status LED stays red, the unit is gone into protect mode, which could be caused by incorrect wiring, short circuits, or excessive volume. Turn off the Power Switch on the subwoofer for two or more seconds to reset, and double check all speaker cables to be sure that no small metal strands are shorting the terminals.

If these steps don't restore the SW 10 II or SW 12 to operation, contact your local Authorized NHT Dealer or NHT for assistance.

Satisfaction

Your satisfaction with your new NHT SW 10 II or SW 12 Subwoofer is important to us. Please note the matched products and accessories we provide for them, and your warranty, printed on the back of this manual. If you have any questions regarding your speakers' use, feel free to call NHT at 1-800-NHT-9993. Enjoy your listening and viewing!



Glossary

Active: Uses electrical power.

Amplifier: An electronic device that increases the current and/or voltage of a signal, providing power to the budspeakers (ie. power amplifier, integrated amplifier, receiver).

Bass: The range of audio frequencies below 180Hz, characterized by low pitch.

Crossover: An electronic circuit that divides an audio signal into different frequency ranges.

Distortion: Any deviation from the original signal.

Driver: The moving part of a budspeaker, which radiates sound energy.

Dynamics: Variations in loudness of sound.

Frequency: A rate of vibration, which corresponds to musical pitch, expressed in Hertz (Hz).

Full Range: A signal encompassing the entire audible frequency spectrum.

Hertz (Hz): A unit equal to one cycle per second, used to measure the frequency of a signal or sound.

High-Pass Filter: A filter that passes only high frequencies above a lower limit.

Impedance: A measure of the total opposition to current flow in an alternating current circuit, measured in ohms.

In Phase: The polarity of an audio signal when connected as follows: (+) to (+) and (-) to (-).

Integrated Amplifier: A preamplifier and amplifier built into one chassis.

Interconnect Cable: A length of shielded wire with plugs at both ends for feeding signals from one electronic device to another.

L.F.E.: "Low Frequency Effects"; The L channel of information recorded on most multichannel digital sound formats.

Line-Level Connection: Low level RCA/phono or XLR type connection.

Load: A term used to describe the impedance that a speaker presents to an amplifier.

Low-Pass Filter: A filter that passes only low frequencies below a higher limit.

Main Speakers: Front L & R channel speakers, sometimes referred to as satellites.

Main-In: A line-level RCA/XLR power amplifier input on

the back of a receiver, integrated amplifier or power amplifier.

Midrange: The frequency span in the middle of the audio range, roughly 180Hz - 3000Hz. Also used to describe the driver that reproduces these frequencies.

Ohm: A unit of electrical resistance. That which opposes an electric current in a conductor. In audio, a measure of the load presented by a device to an electrical source.

Out-of-Phase: The polarity of an audio signal when connected as follows: (+) to (-) and (-) to (+).

Passive: Uses no electrical power.

Phase: An expression of the relative polarities of two signals.

Power Handling: The ability of a budspeaker to operate without large increases in distortion when given varying amounts of input power.

Preamplifier: An electronic device that selects sources and passes line-level signals to an amplifier.

Pre-Out: A preamp line-level RCA output on the back of a receiver, integrated amplifier or preamplifier.

Receiver: A preamplifier, amplifier and tuner built into one chassis.

Satellite: Front L & R speakers when used with a subwoofer. Also referred to as "main speakers".

Sensitivity: A ratio of voltage across the speaker load to the acoustic power output, measured in decibels.

Sub Out: A line level output for connection to a subwoofer or subwoofer signal processor.

Subwoofer: A driver designed to operate over the low bass portion of the audio range. Also refers to a system consisting of a woofer and its enclosure, which are physically separate from the upper range budspeakers.

Surround Speakers: Speakers located in the side or rear for surround channel effects.

Treble: The upper part of the frequency spectrum, consisting of frequencies above about 3000Hz.

Tweeter: A small driver designed to reproduce high frequencies.

Watt: A measure of electrical power, combining the voltage with the electrical current required to drive the budspeaker.

Weight: Low frequencies below 50Hz.

Woofer: A driver designed to operate over the bass portion of the audio range.

Specifications

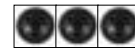
All Super Series products are sonically matched for seamless integration into multichannel systems.



	SB 1	SB 2	SB 3	ST 4	SC 1	SC 2	SW 10 II	SW 12
System Type	2-Way Acoustic Suspension	2-Way Acoustic Suspension	2-Way Acoustic Suspension	3-Way Acoustic Suspension	2-Way Acoustic Suspension	2-Way Acoustic Suspension	Vented / Powered - 150 watts Class G Amplifier	Vented / Powered - 250 watts Class G Amplifier
Driver Complement	1" fluid cooled aluminum dome tweeter with neodymium magnet structure							
Tweeter	1" fluid cooled aluminum dome tweeter with neodymium magnet structure							
Woofer	5.25" Polypropylene	6.5" Polypropylene	6.5" Polypropylene	6.5" and 8" Polypropylene (8" Not Video Shielded)	(2) 4.5" Polypropylene	(2) 5.25" Polypropylene	10" Aluminum (Not Video Shielded)	12" Aluminum (Not Video Shielded)
Video Shielded Unless Noted								
Response	68Hz - 22kHz +/- 3dB	51Hz - 22kHz +/- 3dB	39Hz - 22kHz +/- 3dB	31Hz - 22kHz +/- 3dB	78Hz - 22kHz +/- 3dB	73Hz - 22kHz +/- 3dB	31Hz - 180Hz +/- 3dB	27Hz - 180Hz +/- 3dB
Sensitivity	86dB / 2.83v	86dB / 2.83v	86dB / 2.83v	86dB / 2.83v	86dB / 2.83v	87dB / 2.83v		
Impedance	8 ohm nominal	8 ohm nominal	8 ohm nominal	8 ohm nominal	8 ohm nominal	8 ohm nominal		
Recommended Amplifier Power	Minimum 15 watts Maximum 125 watts	Minimum 15 watts Maximum 150 watts	Minimum 15 watts Maximum 175 watts	Minimum 15 watts Maximum 200 watts	Minimum 15 watts Maximum 150 watts	Minimum 15 watts Maximum 175 watts		
Weight	8 lbs.	13 lbs.	16 lbs.	47.5 lbs.	11 lbs.	22 lbs.	39.5 lbs.	47.5 lbs.
Dimensions	Depth" x Width" x Height"							
	6.75 x 6.25 x 10.25	8.75 x 7.5 x 11.85	10 x 8 x 13	12 x 8 x 38	6.63 x 16.54 x 5.63	8.5 x 19 x 6.5	14 x 12 x 18	16 x 14 x 20
Finish	White or Black High Gloss Piano Finish	White or Black High Gloss Piano Finish	Black High Gloss Piano Finish	Black High Gloss Piano Finish	Black High Gloss Piano Finish	Black High Gloss Piano Finish	Black High Gloss Piano Finish	Black High Gloss Piano Finish



Limited Warranty
Valid Only in the U.S.A.



Warranty Period

For a period of 5 years for parts and 5 years for labor (1 year parts and 90 days labor for electronics) from the date this product is first purchased from an authorized NHT dealer, Now Hear This (NHT) warrants that if it fails to function properly due to a manufacturing defect, despite its being installed and operated according to these instructions and used under normal conditions, it will be either replaced or repaired with new or rebuilt parts (both at NHT's option) with a unit of comparable value without charge to you.

What's Not Covered

Altered, defaced or removed serial numbers void this warranty.

This warranty does not cover any product used in trade, business, industrial or commercial applications.

This warranty also does not cover the cabinet or appearance factors, or costs, defects or damage resulting from misuse, abuse, accident, improper maintenance, alterations or modifications not authorized in writing by NHT, or parts or labor from any source other than an authorized NHT service location.

Damage due to power exposure in excess of the speaker's published power ratings; i.e., overpowering, lightning or power surges, are also not covered.

Your Rights

This warranty gives you specific legal rights, and you may have other rights which vary from state to state.

NHT limits this warranty to the purchase price of the product, excludes incidental or consequential damages, and limits its obligations under any implied warranties under state laws to a period not exceeding their warranty periods. As some states do not allow the above limitations, however, they may not apply to you.

To Obtain Service

To find the name and address of the nearest authorized NHT service location, call or write:

Customer Service Department, NHT, 527 Stone Rd., Benicia, CA 94510, 1-800-NHT-9993 (648-9993), www.nhthifi.com

For your future convenience, please keep this warranty with your sales receipt, and record date and place of purchase for further reference.

Free Manuals Download Website

<http://myh66.com>

<http://usermanuals.us>

<http://www.somanuals.com>

<http://www.4manuals.cc>

<http://www.manual-lib.com>

<http://www.404manual.com>

<http://www.luxmanual.com>

<http://aubethermostatmanual.com>

Golf course search by state

<http://golfingnear.com>

Email search by domain

<http://emailbydomain.com>

Auto manuals search

<http://auto.somanuals.com>

TV manuals search

<http://tv.somanuals.com>