

## NetComm 3G18Wn/3G17Wn router and Blink 3G USB modem

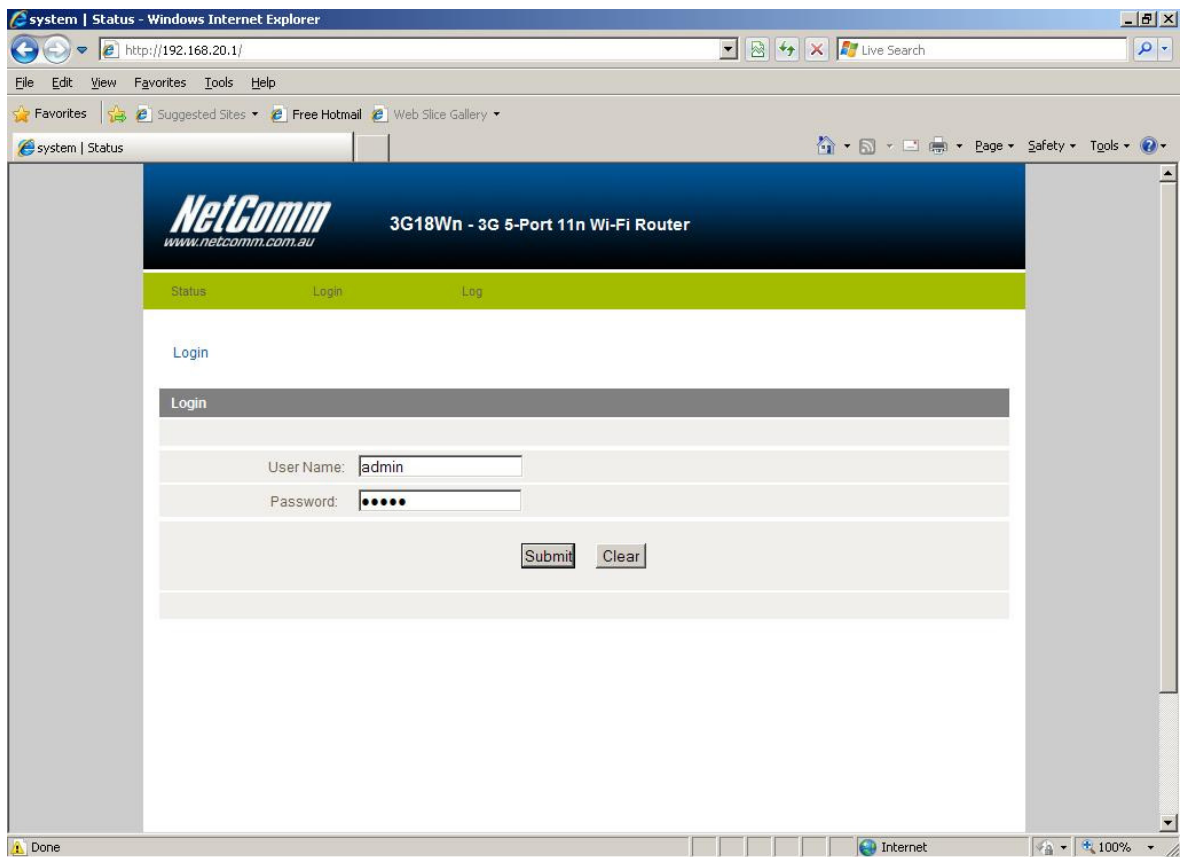
### Blink 3G Internet Connection Setup Instructions:

The following steps describe how to configure a NetComm 3G18Wn or 3G17Wn 3G router from factory default settings to Blink's 3G Internet Service using a Blink 3G USB modem (Huawei E169).

1. Connect your Blink 3G modem to the USB port on the NetComm 3G router.
2. Using the supplied ethernet networking cable connect your computer to one of the LAN ports on the back of the NetComm 3G router.
3. Power on the NetComm 3G router and allow a couple of minutes for the unit to start up.
4. Using your web-browser (e.g Internet Explorer) open the address <http://192.168.20.1>.



5. The following NetComm 3G18Wn/3G17Wn configuration page should be displayed.

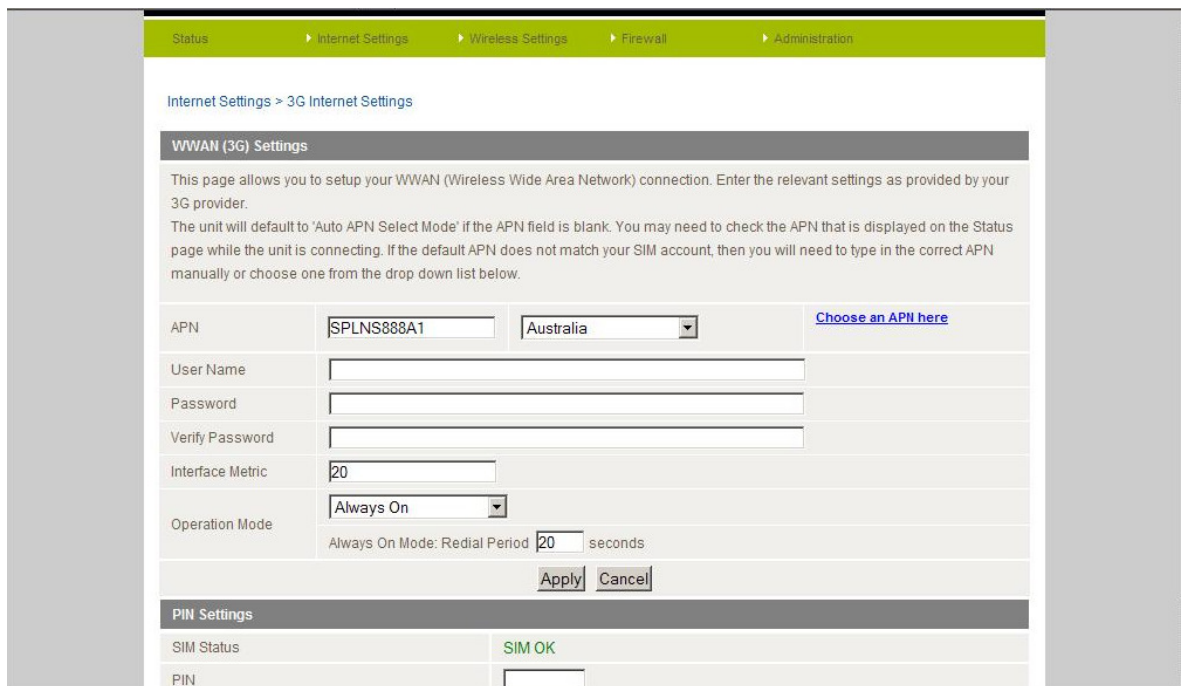


If you find that you're unable to open this page then please refer to the NetComm Quick Start Guide or User Guide (on supplied CD) for detailed setup instructions and troubleshooting information.

6. Enter **admin** into both the username and password fields then select the '**Submit**' button.
7. Navigate to the menu labelled '**Internet Settings**' then choose the '**3G Internet Settings**' selection.



8. In the '**APN**' field enter **SPLNS888A1** then select the '**Apply**' button.



9. Select the '**Status**' menu option to return to the previous page.



10. Under the 'WWAN (3G)' section the 'Status' should be reported as being 'Up'. This is an indication that the NetComm 3G router is connected to the Internet.

The screenshot displays the 'All Status' page of the router. The 'WWAN (3G)' section is highlighted with a red box. It contains a table with the following data:

Interface	Status	Local	Remote
ppp0 splns888a1	up	125.168.83.176	10.64.64.64

Below the table, the 'Connection Status' section provides the following details:

Module Name	Vodafone_K3715
Provider	YES OPTUS
APN	splns888a1
Service Type	UMTS
Coverage	N/A
IMEI	352835034284490
Frequency	N/A
Signal Strength (dBm)	-90 dBm (medium)
SIM Status	SIM OK

11. You should now be able to access the internet!

If find that you are unable to browse the Internet at this point or would like to connect your computer wirelessly to the NetComm 3G router then please refer to the Quick Start Guide or User Guide (on supplied CD) for setup instructions.

## Free Manuals Download Website

<http://myh66.com>

<http://usermanuals.us>

<http://www.somanuals.com>

<http://www.4manuals.cc>

<http://www.manual-lib.com>

<http://www.404manual.com>

<http://www.luxmanual.com>

<http://aubethermostatmanual.com>

Golf course search by state

<http://golfingnear.com>

Email search by domain

<http://emailbydomain.com>

Auto manuals search

<http://auto.somanuals.com>

TV manuals search

<http://tv.somanuals.com>