



- ④ 2 x WAN Ports
- ④ Outbound traffic shaping – 3 modes: session, weight round robin and dynamic traffic
- ④ 3 working modes – Router, Gateway and Basic NAT
- ④ VPN passthrough
- ④ Advanced DoS Firewall
- ④ Mail Alerts and System Logging
- ④ Web based GUI

NetComm's NB750 Load Balancing Router is a next generation Broadband hardware device aimed at improving the reliability and speed of Internet services. By combining the performance of two broadband connections in a single, easy to manage network gateway the NB750 shapes your Internet services and allows you to manage them with the minimum of fuss.

Along with gateway security, the NetComm NB750 allows you to determine how your Internet traffic is shared or it can automatically

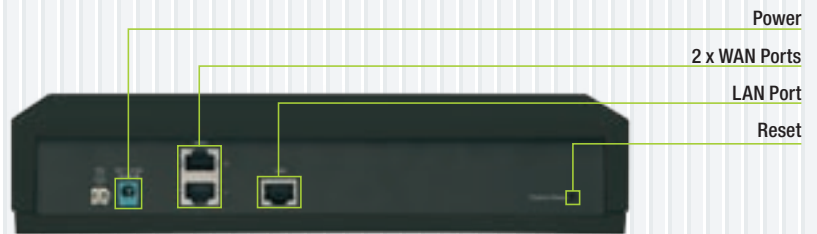
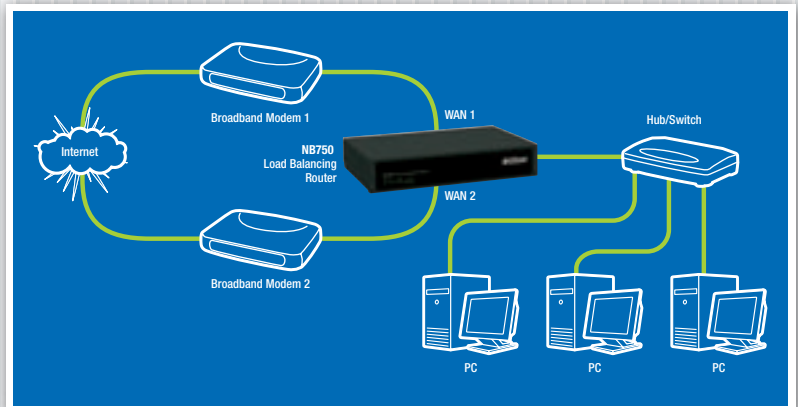
balance the load according to bandwidth usage level. An added bonus is continuous Internet connection: should any WAN connection drop out, the NB750 will maintain Internet services by automatically routing data to the active connection.

The NB750 provides one LAN port which allows the unit to be connected either directly to a Desktop PC or to a switch for Network use.

NB750 2-Port Load Balancing Router

KEY FEATURES

- 2 x WAN ports
- Outbound traffic shaping – 3 modes: session, weight round robin and dynamic traffic
- 3 working modes – Router, Gateway and Basic NAT
- VPN Passthrough
- Advanced DoS Firewall
- Mail Alerts and System Logging
- Web based GUI
- 3-YEAR WARRANTY WHEN YOU REGISTER ONLINE†**
1 year warranty out of the box. Extra 2 years FREE with online registration at www.netcomm.com.au



TECHNICAL SPECIFICATIONS

HARDWARE

- WAN Port: 2 x 10M/100M port
- LAN Port: 1 x 10M/100M
- CPU: MIPS with 150MHz
- Memory: Flash: 2MB, SDRAM: 16MB
- Indicator (6 LEDs): Power, Alarm, LAN 10M & 100M, WAN1 & WAN2
- Reset Switch: Push to load factory default value or back to latest configuration file
- Power: 5V DC/2.8A

SOFTWARE

- Out-bound Load Balance: Provides 3 working modes (Session, weight round robin, dynamic traffic)
- Protocol: TCP/IP, UDP, ARP, BOOTP, ICMP, Routing Protocol, DHCP server/client, FTP, TFTP, Telnet, PPPoE
- VPN pass through: IPSEC, PPTP
- Routing Protocol: Static Route, RIP 1, RIP 2
- Dynamic DNS: Supports dyndns.org, dtdns.com, 88ip.com, oray.net
- Working mode: Router mode, Gateway mode, Basic NAT mode
- Security: DMZ Host, Multi NAT/NAPT, PAP/CHAP, Virtual Server Mapping support, Internet Access Control (Packet filtering base on port & address)
- Firewall: DoS (Denial of Service) protection, including Active

- ports scan, TCP SYNC flood, ICMP flood, IP source route option detection, IP spoofing, Ping of death, IP fragment overlap, UDP flooding, PING oversize, Ping Enable/Disable
- Mail Alert: WAN up, WAN down, DoS attack, System Log
- System Timer: NTP (Network Timer Protocol), Use PC local time
- System Log: Local event logging
- DHCP Server/Client: DHCP Server can reserved up to 253 IP, supports up to 512 users
- Firmware upgrade: HTTP web based download/TFTP
- Configuration file: Backup the configuration file into PC, Restore the saved configuration file into the device
- Remote Configure: Configure Router through Internet

MANAGEMENT – WAN PORT

- MAC address clone: Up to 2 WAN port
- WAN IP Convert: WAN port can connect to different IP domain gateway
- Dial on demand & Auto-Disconnection (PPPoE): Up to 2 WAN port
- Healthy-check: Up to 2 WAN port
- Scheduling control: Up to 2 WAN port
- IP Binding: specific destination IP address plus port number through dedicated WAN port
- Special IP assignment: specific destination IP or local IP address through dedicated WAN port

- Special Port assignment: specific destination port number address through dedicated WAN port
- VoIP pass through: support H.323 ALG
- Protocol Bandwidth Control: Dynamic allocate bandwidth for specific protocol in each WAN port
- QoS: Limit specific application bandwidth & WAN port route path, limit specific User bandwidth & WAN port route path
- System data monitor: show each WAN port bandwidth usage and traffic status

MANAGEMENT – LAN PORT

- Multi-NAT: User definable, up to 10 different LAN segments, IP can be defined at LAN port
- Virtual Server: Bi-direction virtual server, Local virtual server pass through, supports group virtual server setting mode

SPECIFICATIONS

- Temperature: 0 ~ 40°C (operation), -10 ~ 60°C (storage)
- Dimensions: 180mm(W) x 160mm(D) x 50mm(H)
- Weight: Under 600g
- Humidity: 10 ~ 95% RH
- ESD: +/- 4 KV
- Certification: C-Tick N367

Your NetComm dealer:

NetComm[®]
Broadband Solutions

SHARE THE EXPERIENCE

NETCOMM LIMITED ABN 85 002 490 486 PO Box 1200, Lane Cove NSW 2066 Australia
P: 02 9424 2070 F: 02 9424 2010 E: sales@netcomm.com.au W: www.netcomm.com.au
Trademarks and registered trademarks are the property of NetComm Limited or their respective owners. Specifications are subject to change without notice. Images shown may vary slightly from the actual product.

Free Manuals Download Website

<http://myh66.com>

<http://usermanuals.us>

<http://www.somanuals.com>

<http://www.4manuals.cc>

<http://www.manual-lib.com>

<http://www.404manual.com>

<http://www.luxmanual.com>

<http://aubethermostatmanual.com>

Golf course search by state

<http://golfingnear.com>

Email search by domain

<http://emailbydomain.com>

Auto manuals search

<http://auto.somanuals.com>

TV manuals search

<http://tv.somanuals.com>