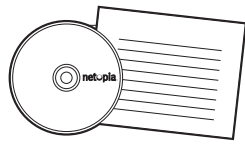


Package Contents



Netopia 3-D Reach USB Adapter



CD & Quickstart Guide

Install the Netopia Wireless Driver

For Microsoft Windows

1. Insert the CD and double-click the Setup icon to load the driver for the Netopia 3-D Reach Wireless USB Adapter.

When the installation is complete, a new Wireless communication icon will appear in your system tray in the Windows toolbar.



2. Click the Wireless icon to start the Netopia WLAN Utility.

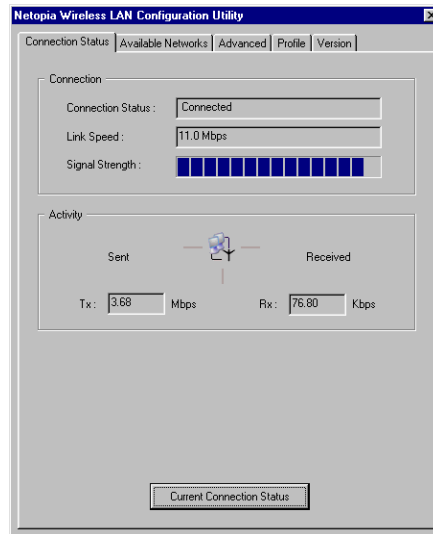
See "Netopia WLAN Utility Screens".

Note: The Netopia WLAN Utility is not installed on Windows XP. Windows XP users should use the Windows XP operating system automatic wireless network configuration feature to configure the wireless connection.

Install the Netopia Wireless USB Adapter

1. Connect the Netopia Wireless USB Adapter to any available USB port on your PC.
2. The USB Adapter should be immediately recognized. If necessary, you can use the Netopia WLAN Utility to configure and monitor your wireless connectivity.
3. You can enable Wireless Security on your Wireless network by using the security features of your USB Adapter in conjunction with your Netopia Wireless Gateway. (See "Wireless Security Password Setting")

Netopia WLAN Utility Screens



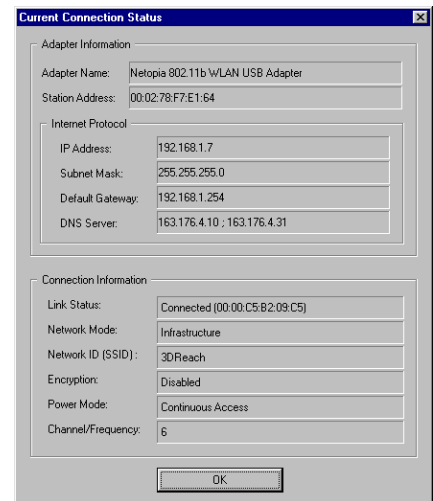
Connection Status

Connection

- **Connection Status:** Tells the name of the wireless network currently in use.
- **Link Speed:** Displays the speed of the current wireless link in bps.
- **Signal Strength:** Graphical display of the signal strength on the current connection to the Access Point.

Activity

- **Sent (TX) bps:** Data transmission rate (upstream) in bps.
- **Received (Rx) bps:** Data reception rate (downstream) in bps.
- **Current Connection Status** button: Allows you to view detailed information for your wireless connection. When you click this button, the "Current Connection Status" screen appears.



Current Connection Status

Adapter Information

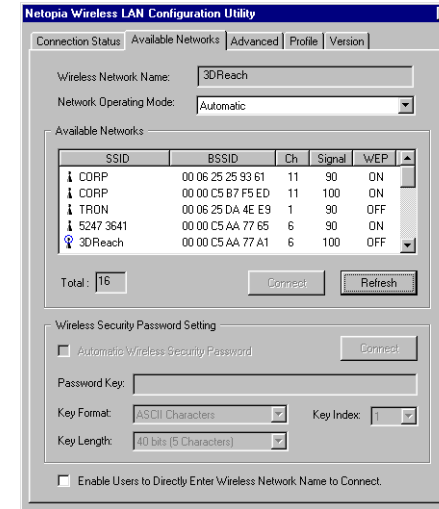
- **Adapter Name:** Name of the wireless USB adapter to which the driver is bound.
- **Station Address:** MAC (hardware) address of this USB adapter.

Internet Protocol (served to this PC by the Wireless Access Point/Gateway)

- **IP Address:** IP Address currently being served to this PC.
- **Subnet Mask:** IP subnet mask for this PC.
- **Default Gateway:** IP Address of the router/gateway for this wireless LAN.
- **DNS Server:** DNS server address for this wireless LAN.

Connection Information

- **Link Status:** Connected to (MAC Address of the Access Point).
- **Network Mode:** Ad Hoc (peer-to-peer) or Infrastructure (network).
- **Network ID (SSID):** Workgroup name or ID of this wireless LAN.
- **Encryption:** Wireless encryption Enabled or Disabled on your network.
- **Power Mode:** Continuous Access, Maximum Power Saving, or Fast Power Saving.
- **Channel/Frequency:** (1 through 11) on which the network is broadcasting.

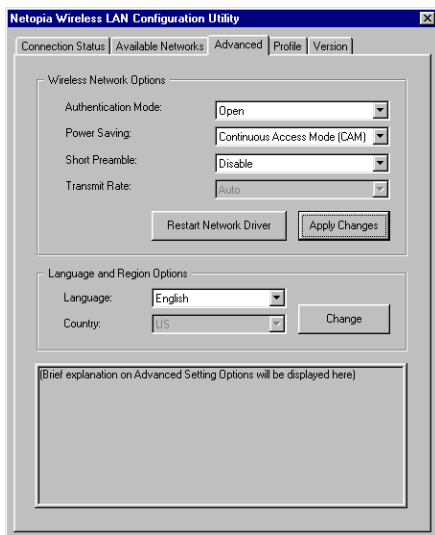


Available Networks:

- **Wireless Network Name:** Network to which you are currently connected.
- **Network Operating Mode:** Automatic, Device-to-device, or Base Station Mode.
- **Available Networks:** Scans for available wireless networks within range. If you select a different one, click the *Connect* button. To scan for others as you change location, click the *Refresh* button.

Wireless Security Password Setting

- **Automatic Wireless Security Password:** Leave this box unchecked if you are using a Netopia Wireless Gateway.
- **Password key:** Transfer the Encryption key from your Netopia Wireless Gateway to this field. Once you do this the following fields will automatically adjust to your entry.
- **Key Format:** ASCII Characters or Hexadecimal digits.
- **Key Length:** 40 bits (5 characters or 10 hex digits); 104 bits (13 characters or 26 hex digits)
- **Key Index:** This should be the same key index as that used in your Netopia Wireless Gateway.
- Click the *Connect* button.



Advanced

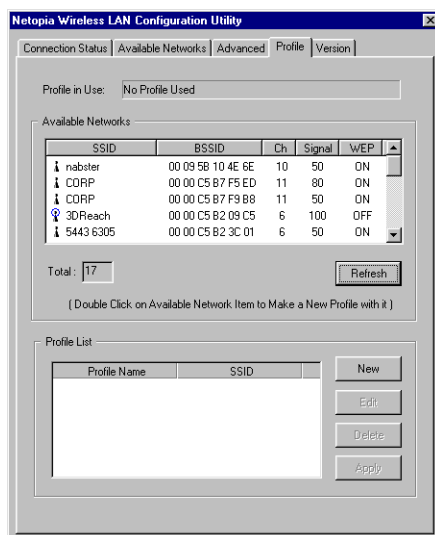
Wireless Network Options

- **Authentication Mode:**
- **Power Saving:** Power Mode: Continuous Access, Maximum Power Saving, or Fast Power Saving.
- **Short Preamble:** Disable or Enable. Long Preamble is default if Short Preamble is disabled.
- **Transmit rate**
- If you make any changes to the items above, you must click the [Apply Changes](#) button and the [Restart Network Driver](#) button.

Language and Region Options

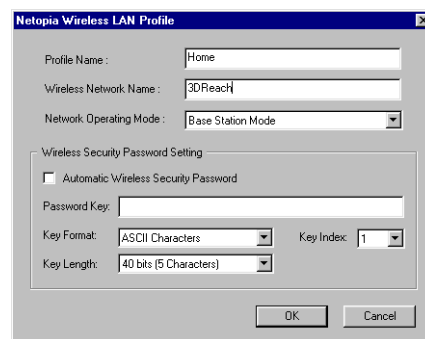
- **Language:** English, French, German, or Korean.
- **Country:** N/A
- If you make any changes to the items above, click the [Change](#) button

If you use your wireless PC in multiple locations, connecting to multiple networks, it can be useful to create profiles of the security and password settings for easy switching. The Profile screens allow you to create, edit, delete, and switch among multiple profiles.



Profile

- **Profile in Use:** Shows the current profile you are using.
- **Available Networks:** Shows the networks available in range.
- **Refresh** button: Allows you to scan for available networks.
- **Profile List:** A list of profiles you have configured, for convenient switching. To create a new profile, click the [New](#) button. This will display the *"New Wireless LAN Profile"* screen, where you can [Add](#) or [Edit](#) a profile.
- To delete a profile, click the [Delete](#) button.
- To activate a profile, select one from the list and click the [Apply](#) button.

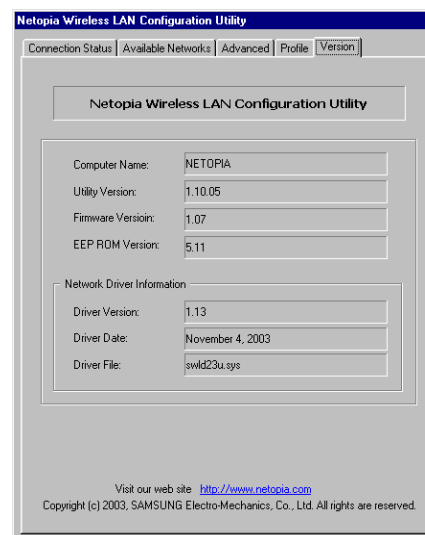


Wireless Security Password Setting

- **Automatic Wireless Security Password:** If your network supports this, check this box, and click the [OK](#) button. No further entries are required.
- **Password Key** field: If your network is secured by an encryption key, transfer it to this field from your wireless Gateway's settings in either ASCII characters or hexadecimal digits. Then click the [OK](#) button.
- **Key Format:** *ASCII Characters* or *Hexadecimal digits*.
- **Key Length:** *40 bits* (5 characters or 10 hex digits); *104 bits* (13 characters or 26 hex digits)
- **Key Index:** This should be the same key index as that used in your Netopia Wireless Gateway.

New Wireless LAN Profile

- **Profile Name:** Enter a descriptive name, for example *Home Office*.
- **Wireless Network Name:** The Network name as it appears in the scanning list.
- **Network Operating Mode:** *Base Station Mode* or *Device-to-Device*.



Version

- **Computer Name:** Name of this PC.
- **Utility Version:** Version number of this Netopia WLAN Configuration Utility.
- **Firmware Version:** Firmware version of your Netopia 3-D Reach wireless USB adapter.
- **EEP ROM Version:** Manufacturing version of the ROM chip.

Network Driver Information

- **Driver Version:** Version number of this wireless device driver.
- **Driver Date:** Release date of this wireless device driver.
- **Driver File:** File name of this wireless device driver.

Netopia Part Number: 6180088-00-01

Copyright 2003, Netopia, Inc. Netopia and the Netopia logo are registered trademarks belonging to Netopia, Inc., registered U.S. Patent and Trademark Office. Broadband Without Boundaries and 3-D Reach are trademarks belonging to Netopia, Inc. All other trademarks are the property of their respective owners. All rights reserved.

Free Manuals Download Website

<http://myh66.com>

<http://usermanuals.us>

<http://www.somanuals.com>

<http://www.4manuals.cc>

<http://www.manual-lib.com>

<http://www.404manual.com>

<http://www.luxmanual.com>

<http://aubethermostatmanual.com>

Golf course search by state

<http://golfingnear.com>

Email search by domain

<http://emailbydomain.com>

Auto manuals search

<http://auto.somanuals.com>

TV manuals search

<http://tv.somanuals.com>