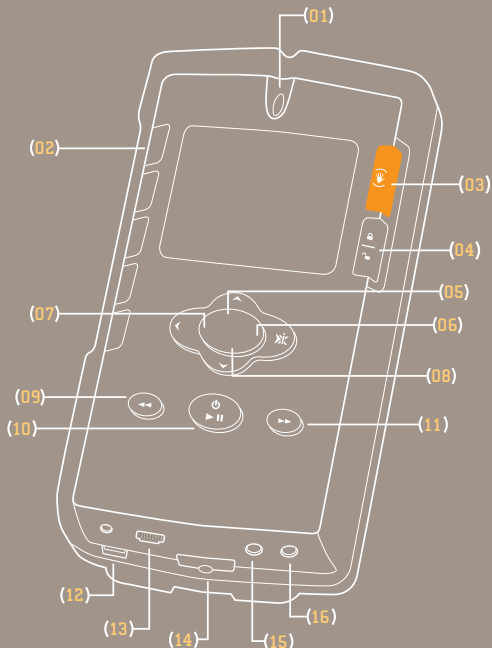




neuros™

user's guide
128 MB & 20 GB

➤ Tour of Neuros



01 MICROPHONE

02 PRESET BUTTONS

03 HISI/RECORD

04 KEYPAD LOCK/UNLOCK

05 SCROLL UP/VOLUME UP

06 SELECT/OK

07 BACK/STOP

08 SCROLL DOWN/VOLUME DOWN

09 REWIND

10 PLAY/PAUSE (POWER ON/OFF)

11 FORWARD

12 BACKPACK RELEASE

13 USB CONNECTOR

14 POWER CONNECTOR

15 HEADPHONE CONNECTOR

16 LINE-LEVEL INPUT CONNECTOR

Table of Contents

| | |
|---------|---|
| PAGE 0 | Tour of the Player |
| PAGE 2 | Neuros, Your Music Frequency |
| PAGE 3 | Quick Start Instructions |
| PAGE 4 | Package Contents |
| PAGE 5 | System Requirements |
| PAGE 5 | Releasing the Backpack |
| PAGE 6 | Neuros Synchronization Manager Application |
| PAGE 7 | Installation Instructions |
| PAGE 8 | Importing Music to the Neuros Sync Manager |
| PAGE 10 | Navigating Neuros |
| PAGE 11 | Managing, Playing and Exploring Audio |
| PAGE 14 | MyFi: Broadcast Neuros through any FM radio |
| PAGE 16 | Listening to the Neuros FM Radio |
| PAGE 17 | HiSi (Hear it! Save it!): Discover New Music on the Radio |
| PAGE 20 | Making Recordings |
| PAGE 22 | PC Library |
| PAGE 24 | Settings |
| PAGE 29 | Firmware and Software Updates |
| PAGE 30 | Troubleshooting |
| PAGE 31 | Support Information |
| PAGE 31 | Important Safety Information |
| PAGE 32 | FCC Rules and Regulations |
| PAGE 33 | Warranty |
| PAGE 35 | Index |

Neuros, Your Music Frequency

Congratulations, you have purchased the world's first digital audio computer.

Your Neuros MP3 digital audio computer lets you listen, explore and enjoy music in ways not possible before. Experience these unique features:



MyFi "My Frequency": broadcast your digital music through any FM radio.

See p.14 for detailed information.



HiSi "Hear It! Save It!": identify new music with a click of the orange HiSi button.

See p.17 for detailed information.





Neuros Synchronization: Neuros' software synchronizes your Neuros with automatic downloads from your PC Audio Library and Internet music services.



Record to MP3: create digital recordings in the MP3 file format from FM radio, built-in microphone, or audio input.

Other important features include: large backlit display; digitally enhanced FM tuner, flexible design with removable backpack to accommodate new technology without having to buy an entire new unit; automatic software and firmware updates for new features and file formats.

Quick Start Instructions

1. **Charge the battery.** Connect the wall power adapter to the power connector on the bottom of your Neuros and begin charging battery. For best performance, charge battery for 8 hours at first use to give it a full charge. You can use the Neuros while it is charging.
2. **Power On.** Press-and-hold the Play button to power on/off Neuros.
3. **Install Neuros Synchronization (Sync) Manager application.** Use the included CD-ROM to install the Neuros Synchronization Manager application on your PC and set up user preferences.
4. **Connect your Neuros.** Your Neuros must be connected to complete the PC application installation and to begin transferring music. Connect the supplied USB cable to your Neuros and to the USB port on your computer to begin synchronization.
5. **Import music.** With the Neuros Sync Manager application open, from the File menu use the “Search Computer for Music” function to import your music files into the Neuros Sync Manager.
6. **Synchronize.** Select the tracks you would like to transfer to the device and click the “Add to Neuros” icon  and then click the synchronization icon  on the Neuros Sync Manager. While synchronization is in process your Neuros is not operational. Once the “synchronization completed successfully” message from the Neuros Sync manager and the “do not disconnect” message disappears from the Neuros display, you may safely disconnect from the USB.
7. **Enjoy your music anywhere!** Plug in earphones to listen to your Neuros privately or broadcast your music through any FM radio. See p.14 for detailed information and instructions for Neuros MyFi.
8. **Explore, expand and enhance the functionality of your Neuros.** Go to www.NeuroAudio.com for the latest enhancements and upgrades.

Package Contents

Everything you need to get started! For additional accessories see Neuros Gear at www.NeurosAudio.com.

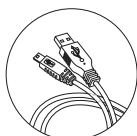
- Neuros MP3 digital audio computer, 128MB or Neuros HD 20GB
- Neuros Earphones
- Wall Power Adapter
- USB Cable
- Belt Clip (Neuros 128MB only)
- Car Power Adapter (Neuros HD 20GB only)
- Neuros Synchronization Manager Application
- Neuros User's Guide



Earphones



Wall Power Adapter



USB Cable



Belt Clip



Car Power Adapter

Battery

The rechargeable, non-replaceable batteries provide 10 hours of continuous playback. The batteries in the Neuros and Neuros HD do not suffer from the “memory effect” and actually benefit from the avoidance of full-discharge conditions, so feel free to keep the Neuros plugged in whenever convenient.

Download from Www.Somanuals.com. All Manuals Search And Download.

Minimum System Requirements

- PC with 1 available USB port
- Pentium 233 MHz
- 64 RAM
- 160MB available hard disk space
- Microsoft® Windows 98SE, Me, Windows 2000, Windows XP

View detailed technical specifications at www.NeurosAudio.com/technicalspecifications.

Releasing the Backpack

The two-part design of the Neuros, main unit (silver) and backpack (black), allows for easy upgrades and new technology adoption by developing new backpacks. Currently, the Neuros 128MB backpack can be swapped for the 20GB Hard Drive backpack for an instant upgrade from a Flash player to a hard drive.

To release the main unit (silver) from the backpack (black), press and hold the backpack release lever (to the left of the power connector) with a finger from one hand. With the other hand, press down from the top of the main unit to remove the main unit.

To re-insert the main unit, press it into the backpack leaving about 1/4" of space from the top of the backpack. Once the main unit is level with the sides of the backpack (and the bottom of the device is also pressed against the backpack), slide it upwards until it clicks into place.

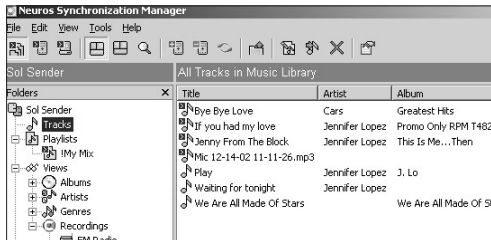
Check your Neuros from the bottom to make sure that there is no space between the Neuros main unit and the backpack.

Neuros Synchronization Manager Application

The Neuros Synchronization Manager is your essential tool for automatic synchronization from your PC to your Neuros, and from your Neuros to your PC. You must launch the application to initiate automatic synchronization.

With the Neuros Synchronization Manager you can:

- Transfer your music stored on your hard drive for playback through your Neuros.
- Import songs and playlists from many popular media players, including MusicMatch, WinAmp and Zinf, and transfer to Neuros.
- Manage and organize your songs and recordings.
- Edit your ID3 tags.
- Create playlists to transfer to Neuros.
- Copy and name mixes and recordings that were created on Neuros.
- Identify title and artist of HiSi samples.
- Automatically update software and firmware.



Installation Instructions

1. Install application by inserting the Neuros Synchronization Manager CD-ROM and follow the onscreen installation instructions. If installation screens do not automatically appear, view CD contents through Windows Explorer and click the "Setup" icon. The installation will take a few minutes. The PC will prompt you to reboot to complete installation, select "yes." Installation will start automatically after reboot, and prompt screens will walk you through to completion.
2. Connect to Neuros via the USB cable provided. Your Neuros must be connected to your PC to set user preferences and to synchronize.
3. Open your Neuros Sync Manager application. With Neuros connected to your PC, you will be prompted to complete your user preferences. Enter in your user name as you would like it to appear in the application.
4. Complete User Preferences. Your serial number should automatically be filled in user preferences. If not, click "Get ID" (your Neuros must be connected via USB for the application to read your serial number). A default path has been set for the folder location to store the HiSi samples and recordings that you make on the Neuros. Click OK to complete.
5. You will be prompted to register. Registration is required to use the Neuros HiSi song identification feature. Your registration profile will also be available to you when you login at **www.NeuroAudio.com**, where you can participate in user forums and learn about new features and partners.
6. You can now begin loading music into the Neuros Sync Manager. See the next section, "Importing Music" (p. 8).

Note: The CD-ROM includes USB drivers specifically for Windows 98SE. Neuros uses the default USB drivers that come with the other (Me, 2000, and XP) Windows operating systems.

Importing Music to the Neuros Sync Manager



This Windows-based application enables scans of your hard drive for stored MP3 files and M3U files (playlist files) from popular media player software like Music Match.

1. Install Neuros Sync Manager application as explained on p.7.
2. From the file menu, choose "Search computer for music" and identify the directories/files you would like to transfer songs from. Another option is to open a folder using Windows Explorer and drag and drop songs into the Tracks window. Album, Artist and Genre information will be automatically loaded.
3. Playlists can be imported from other media players or created in the Neuros Sync Manager. Import playlists by selecting "Import Music from Media Player" from the File menu. Neuros Sync Manager will search your computer and produce a dialog box where you can check the boxes for the playlists you want to import. Click the "Import" button. Neuros will import playlists with the following extensions: *.asx, *.wpl, *.m3u, *.b4s and *.pls.



These formats are used by the following players:

Zinf (www.zinf.org)



Winamp (www.winamp.com)

MusicMatch (www.musicmatch.com)

Windows Media Player (included in the Windows O/S)

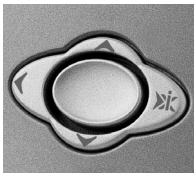
4. To create a new playlist, click on the create new playlists icon  or right-click playlists . When the dialog box appears, fill in a name for the playlist and a description. Your playlist's name will then appear in the list of playlists. You can then add tracks to your new playlist dragging titles or choosing "add to playlist" using a right-click.
5. Songs can be played through your default audio player by right-clicking the track and selecting "Play".

Transferring Music to Your Neuros

- 1 Once your tracks are organized to your satisfaction in the Neuros Sync Manager, select the songs and playlists you would like to transfer to your Neuros. Right-click the selection and choose the option "Send to Neuros" from the menu, or click this icon  in the toolbar.
2. Click the Synchronization icon  or choose "Synchronization" from the Tools menu to activate transfer. Once the "synchronization completed successfully" message from the Neuros Sync Manager appears and the "do not disconnect" message disappears from your Neuros display, you can safely disconnect the USB.

Detailed instructions and additional information can be found through the help screens and index in the Neuros Synchronization Manager.

Navigating Neuros



Navigation Button

Easy to use menus and thumb-controlled main navigation button allows for one-finger navigation of the Neuros digital audio computer.

- Click Up and Down to scroll within a menu.
- Click Select to move to a new menu.
- Click Back to return to a previous menu.

Neuros also uses a pop-up menu called Xi (⊗) (Extra Information Menu) to give you shortcuts to player functions. When you see the Xi icon, click the Select button and the pop-up menu will appear. Click Up and Down to scroll through these menus in the same way as all the others. Click Select for your menu choice.



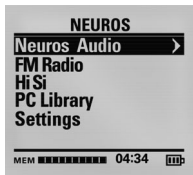
Song Xi Menu

Some Xi menu options include:

- **Play** – playback of song or playlist.
- **Info** – more information about a song (title, artist, album).
- **Add to My Mix** – adds the song to the playlist you create on Neuros.
- **Shuffle** – plays songs in a random order.
- **Repeat** – plays the song or selected songs repeatedly.
- **Remove** – remove songs from playlists. Does not remove the song from your Neuros or PC, just the playlist.
- **Delete** – delete songs from your Neuros or from your PC's hard drive.

Managing, Playing and Exploring Audio

Play songs and recordings with a click of the Play button, create custom “mixes” on the fly, schedule downloads from your PC library collection, and manage the tracks on your Neuros. You can even explore audio from Internet music services.

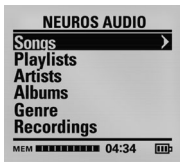


Main Neuros Menu

Neuros Menu Overview

There are two audio menu options:

1. **Neuros Audio:** list of all the tracks loaded on your Neuros and available for playback.
2. **PC Library:** list of all the tracks stored on your PC but not loaded on your Neuros. *Because the library does not contain the actual media, songs in the PC Library cannot be played.* These tracks can be scheduled for automatic download from the convenience of your Neuros.



Neuros Audio



Songs Menu

The menus include arrows to indicate that a sub-menu follows the current menu. A scroll bar running down the length of the menu indicates that more listings are available by using the Up and Down keys to scroll.

Playing Music:

Clicking the Play button from almost any menu will begin playing the first song listed.

For different selections explore the Neuros Audio menu:

1. Select from Songs, Playlists, Artists, Albums, Genres or Recordings.
2. Scroll using the Up and Down buttons through the listings to identify your choice.
3. Click Play to start immediate playback, or click Select to pop up the Xi menu for more options.



Neuros Audio



Song Titles



Now Playing

Playlists

Create playlists using the Neuros Synchronization Manager and import playlists from your favorite media players. Or create your own custom mix right on your Neuros (called My Mix). Later when you sync, your custom mix will be transferred to the Neuros Synchronization Manager for you to save.

To playback a playlist:

1. From the Neuros Audio menu, select Playlists to view all playlists transferred from your PC along with the My Mix playlist that you create on the Neuros.
2. Scroll to the playlist you would like to playback and click the Play button.

To create and add tracks to the My Mix playlist:

1. Identify the song or recording you would like to add to My Mix from the songs or recordings menus.
2. Click the Select button to pop up the Xi menu.
3. Select "Add to My Mix." A confirmation message will let you know that you have successfully added track to the My Mix playlist.
4. Click the Back button to return to the previous menu to select additional tracks for the My Mix playlist.
5. Tracks added to the My Mix playlist will be listed alphabetically.

To remove songs or recordings from a Playlist:

1. Select the playlist from which you would like to remove songs or recordings.
2. Select the song or recording you would like to remove.
3. The Xi menu will pop up to view options.
4. Select Remove.
5. Confirm your decision by clicking Up for yes and Down for no.

This will remove the track from the playlist, not from the Neuros or your PC.

If you wish to delete a track, see p.10.

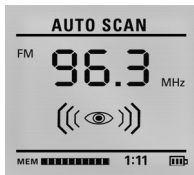
MyFi: Broadcast Neuros through any FM radio

Now you can enjoy your music everywhere and anywhere. The integrated Neuros MyFi transmitter uses all digital stereo encoding just like the broadcast towers used by professional radio stations.

Through a wireless connection, you can broadcast your music in the car, your office or a friend's house. No need for additional accessories or wires!

There is also no need to fumble around, trying to find a free FM frequency for your broadcast. With the Neuros AutoScan feature, Neuros will automatically scan the FM dial and return to you the most available frequency for your broadcast.

Using MyFi:



Left: When AutoScan is completed the recommended frequency for broadcasting is displayed. **Right:** The frequency for FM playback is identified in the lower right.

1. Initiate AutoScan. First plug in your earphones since they will act as an antenna for the Neuros tuner. Then, go to the Settings menu and select MyFi.
2. From the MyFi menu, select AutoScan. Neuros will scan over 70 frequencies, so this can take a couple minutes. AutoScan is complete when the blinking eye animation stops and the frequency selected remains on the screen.

3. Unplug your earphones.
4. Tune the radio that you would like to use for your broadcast to the frequency that Neuros AutoScan has returned to you.
5. Return to the Neuros Audio menu and select the music for your broadcast.
6. Click Play. MyFi playback will begin.
7. Control the volume using your FM radio as you normally would. The volume control buttons on the Neuros are not operational while MyFi is being used.

Note: You can AutoScan at any time. The identified frequency will be stored on your Neuros and is visible to you from the “Now Playing” screen when you click Play.

To manually adjust the MyFi transmission frequency:

1. During playback click the Up and Down buttons to set a new frequency.
2. Then change the radio that you are broadcasting through to the same frequency.

The Neuros factory default setting for MyFi is AutoDetect. This means that when Neuros detects earphones, MyFi will not be available. Unplug your earphones when you want to use MyFi to broadcast through any FM radio.

Through MyFi on the Settings Menu, you can change the setting to have MyFi always off. You can also choose the MyFi Quality – mono or stereo.

Listening to the Neuros FM Radio

You can listen to the radio through the Neuros integrated FM radio. When you are in FM Radio mode, you can also use the HiSi automatic song identification feature (see HiSi on p.17). You can also record what you are listening to on the radio directly into MP3 format (see Recordings on p.20).

To turn on/off the Neuros FM radio:

1. Select FM Radio from the Neuros main menu.
2. To turn off the FM Radio click the Back button.

Note: *your earphones act as your antenna to improve radio reception.*

Adjusting the radio dial:

1. Manually tune by clicking the Forward and Rewind buttons.
2. Rapidly scan frequencies by pressing and holding the Forward and Rewind buttons.
3. Seek next frequency by double-clicking the Forward and Rewind buttons.




FM Radio

To set a radio station as a preset:

1. Select the radio station for which you would like to assign a preset button.
2. While the station is playing, press and hold down the preset button of your choice.
3. The preset number will appear on your screen.

HiSi or Hear it! Save it!: Discover New Music on the Radio

Identify new music with a unique automatic song recognition system called HiSi  or Hear it! Save it!. With a click of the orange HiSi button on your player, Neuros initiates a “digital fingerprint” of a song you hear on the Neuros radio. When you synchronize with your PC, the Neuros Sync Manager connects to the Internet and returns the title and artist of the song to your device. To use the HiSi service you must complete user registration on your Neuros Sync Manager. There is no charge for the HiSi service.

Using HiSi

Note: You must have the Neuros radio tuned to the station playing the song you wish to identify. You also must have the earphones plugged in to act as the FM tuner antenna.



HiSi Recording



HiSi Finished

When you hear a song you would like to identify:

1. Click the orange HiSi button once.
2. The HiSi recording screen will countdown the 30 second song clip length needed for the digital fingerprint.
3. When HiSi is complete you will automatically be returned to the FM menu.



When you hear a song on an external radio (e.g. car radio) you would like HiSi to identify:

1. Make sure earphones are plugged into your Neuros.
2. Press and hold the orange HiSi button. This puts you directly in FM Radio mode. This action will also power on the Neuros.
3. Tune to desired station.
4. Click HiSi button to start recording the 30 second song clip needed for the digital fingerprint.

Neuros will save these samples as files with radio station, date, and time as the file name. These files will be stored in the "To be identified" menu file accessible from the HiSi menu (go to Neuros Main Menu). When you synchronize with your PC, these files will be transferred to the Neuros Sync Manager for identification.

Identifying HiSi Clips

To identify your HiSi clips, you must be connected to the Internet. The HiSi clip initiates a digital fingerprint which is matched against a web-based database for identification.

1. Connect the USB cable to your Neuros and to your PC.
2. Open the Neuros Sync Manager.
3. Click the Synchronization  button on the tool bar.
4. The song title and artist will be identified in the Messages box at the bottom of the Neuros Sync Manager.
5. Click the Synchronization  button again to transfer this information to your Neuros.

To view completed HiSi requests on your Neuros:

1. Select HiSi from the main Neuros menu.
2. Select one of three categories: Identified, To Be Identified, or Unsuccessful.

To play a HiSi clip, select the file stored in one of the three categories noted above and select Play from the Xi menu.

To cancel and delete the HiSi clip while recording is underway:

1. Click the Back button while the HiSi clip is being recorded.
2. You will be asked to cancel the HiSi recording, yes or no?

To delete the HiSi clip when HiSi is complete:

1. From the HiSi complete screen, click Select to pop up the Xi menu.
2. Select Delete.

***Note:** The Neuros HiSi song identification feature is designed to match at least 95% of music heard on the radio. New songs are continually being added. Poor reception (earphones not plugged in) or incomplete recordings can impair the identification process. "Best Guesses" are also provided when HiSi isn't sure.*

Recordings – Create MP3 files from the Neuros FM radio, Microphone, or Any Device (through line-level input)

Use your Neuros to record directly to the MP3 file format with the built-in microphone and digital encoding capability.

Neuros offers three recording options:

- FM Radio Recordings – recording what you hear on Neuros FM Radio to MP3 file format.
- Voice Recordings – using the built-in microphone to record notes or memos to yourself and others.
- Line-In Recordings – using a “line-in” connection, any microphone or device with an audio output can be the source of recordings created and stored onto your Neuros in the MP3 format.

The recording quality can be adjusted. To learn about Neuros’ storage capacity and how to adjust quality levels, see “Settings/Record Quality” on p. 28.

| SAMPLE RATE | MEMORY NEEDED FOR 1 MINUTE OF RECORDING TIME |
|-------------|---|
| 64 Kbps | 500KB |
| 96 Kbps | 750KB |
| 128 Kbps | 1MB |
| 160 Kbps | 1.25MB |

Record to MP3 format

From Neuros FM:

1. Tune your Neuros FM radio to the station from which you would like to record.
2. **Double-click** the orange HiSi button to start recording. **Important:** a single click will only record a thirty second HiSi clip.
3. Stop recording by clicking the Back button.

From Neuros Microphone:

1. **Double-click** the orange HiSi button to start recording.
2. Start speaking into the Neuros built-in microphone (top of player).
3. Stop recording by clicking the Back button.

From Line-Level Input:

1. Plug in external microphone or line out from any audio device from which you wish to record into the line-level input connector on the bottom of you Neuros (see "Tour of Player" on the front page) using standard 1/8" audio jack connectors.
2. **Double-click** the orange HiSi button to start recording
3. Click Play on the device from which you are recording.
4. Stop recording by clicking the Back button.

To transfer recordings to your PC:

Synchronize with the Neuros Synchronization Manager. Connect the USB cable from your Neuros to your PC and with your application open, select sync to transfer files to your PC.

Completed recordings can be found in the Recordings menu accessible from the Neuros Audio menu and in Recordings in your Neuros Sync Manager after transfer.

PC Library

The PC Library is one of the key elements that makes Neuros an interactive computer, and not just an MP3 player. From the Neuros main menu you can view an index of your entire PC audio collection by selecting PC Library.

The PC Library works like a portable mirror of your PC, containing information about your songs, playlists, and other music services. As a result, to use the PC library function effectively, you must have all your music imported into the Neuros Synchronization Manager (see "Importing Music to the Neuros Sync Manager", p.8).


You can modify, organize, and schedule downloads from your PC Library audio collection all from the convenience of your pocket-sized Neuros. All your requests are automatically executed when you next sync with your PC. The possibilities of the PC Library are endless, so stay tuned to our website, **www.NeuosAudio.com**.

Schedule downloads from your PC automatically:

Use Get File from the Xi menu to automate downloads of your entire audio collection when you are away from your PC.

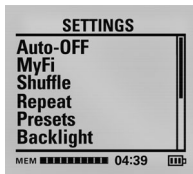


PC Library Song Xi Menu

1. Select PC Library from the Neuros main menu.
2. Select the song or playlist you would like to “get” from your PC.
3. From the Xi pop-up menu, select Get File. Your selection will be confirmed.
4. Click Back to return to the previous menu to select additional songs for download next time you sync.
5. Synchronize. Make sure your USB is connected to your Neuros and to your PC. With your Neuros Sync Manager open, click the synchronization  button and have all your requests downloaded automatically from your PC to your Neuros.

Tracks in the library can also be added to the My Mix playlist (explained on p.13) by selecting “Add to My Mix” from the Xi menu. Because no media is contained in the index, that track cannot be played until you synchronize.

Settings



Settings Menu

From the main menu, select Settings to view menu options. Scroll down to view all the options available. Selecting any item from this menu will open a new window that will allow you to activate or modify the feature's settings.

To adjust Auto-Off (automatic power off when Neuros is idle)

1. From the Settings menu, select Auto-Off
2. Select from Off, after 5 minutes, after 10 minutes, after 15 minutes, after 30 minutes, after 60 minutes.



MyFi Mode

MyFi settings–Mode, Quality and AutoScan:

To change MyFi Mode:

1. From the Settings menu, select MyFi then select Mode.
2. Select either Off or Auto Detect.

Default setting is Auto Detect. In this mode, your Neuros will turn off MyFi when earphones are plugged in and will turn on when no earphones are plugged in. Selecting Play will start MyFi for broadcast through an FM radio.

Note: To switch from MyFi to earphones, click Back to stop playback and plug in earphones. Then click Play again.

To adjust MyFi Quality:



MyFi Quality

1. From the Settings menu, select MyFi, then select Quality.
2. Select either Mono or Stereo. The default setting for MyFi is Mono.
You can change this setting to Stereo.

Note: Mono broadcasting has better resistance to interference than does Stereo. If you are using the Neuros in congested areas where you are having trouble with interference, use the Mono setting.

To initiate AutoScan:

1. From the Settings menu, select MyFi, then select AutoScan.

When the AutoScan feature is selected your Neuros will automatically scan the full FM dial for the most available frequency from which you can broadcast your music. This frequency will be stored in your Neuros and will be visible to you from the "Now Playing" screen. If you move locations or find yourself in a crowded area and need a new frequency, you can select AutoScan again, or manually adjust the MyFi transmission frequency (see p.15).

Note: Earphones must be plugged in (they act as the Neuros FM tuner antenna) for AutoScan to work properly. In addition, for AutoScan to work FM reception needs to be strong (e.g. doesn't work in a tunnel).

To learn to broadcast your music through any FM radio, see "MyFi" on p.14.

To adjust Shuffle:

1. From the Settings menu, select Shuffle.
2. Select from Sequential (songs played in the order in which they are listed on the Neuros) or Random.

To adjust Repeat:

1. From the Settings menu, select Repeat.
2. Select from Off (no repeat), Repeat 1 (repeat once), or Repeat 2 (repeat twice).

To set and view Presets:

Songs, playlists, albums, genres, recordings, HiSi samples, and radio stations can all be set as a preset and activated when one of the five preset buttons is pressed.

To program a preset:

1. Press and hold the Preset button during playback of desired song, first song of playlist, first song of album, etc. It will turn any selected item into the preset for the button that is pressed down. It will override any previously set presets for that button.
2. Your selection will be confirmed.

To view your preset assignments:

1. Go to Settings menu.
2. Select Presets. Your presets will be listed. Presets cannot be played from this view.

To adjust Backlight:

1. From the Settings menu, select Backlight.
2. Select Off to have the orange backlight always off, or select off after 10 seconds or off after 30 seconds.

To adjust Contrast:

1. From the Settings menu, select Contrast.
2. Use the Up and Down buttons to adjust the contrast of the display.

To view Sync Log:

The Sync log displays the status of information to be synchronized with your PC.

From the Settings menu, select Sync Log.

- Pending: the number of tracks/files to be transferred to the PC at the next Sync.
- Completed: the number of tracks/files successfully transferred from the Neuros to the PC and from the PC to the Neuros.
- Failed: the number of tracks/files that were not successfully transferred at the last Sync between the PC and the Neuros.

To adjust Record Quality:

1. From the Settings menu, select Record Quality.
2. Choose from 64 kbps, 96 kbps, 128kbps, or 160 kbps. The higher the kbps, the higher quality the recording, but the larger the file size (see charts on p. 20).

To adjust Date and Time:

1. From the Settings menu, select Date and Time.
2. The cursor moves from month > date > year > hour > minute > AM/PM. Use the Up and Down buttons to change the values of the settings within each field.
3. Click Select to confirm the setting and move to the next field.
4. When complete, click Back to exit and return to the Settings menu.

To Restore Defaults:

1. From the Settings menu, select Restore Defaults (factory settings).
2. Select Yes or No.

To view Properties:

1. From the Settings menu, select Properties.
2. View available memory on your Neuros, the firmware version on your Neuros, and your Neuros serial number.

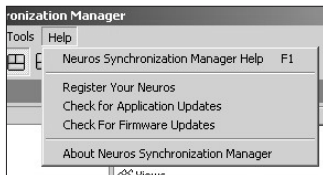
Firmware and Software Updates

The Neuros Operating System is designed as an Open system, enabling new applications and new features to be created by us and others. If you register, you will be notified of new applications and system updates available for the Neuros digital audio computer.

We have made the update process automatic.

To update Neuros firmware or Neuros Sync Manager software:

1. You must be connected to the Internet to update your PC application software and your Neuros device firmware.
2. From the Neuros Sync Manager, select Help and then select either Check for Application Updates or Check for Firmware Updates.
3. For firmware updates, select the Synchronization button to transfer these upgrades to your Neuros.
4. Follow the PC prompts for application updates and follow the Neuros display prompts for firmware updates.



For other kinds of help, like learning how to find and download music, convert your CDs into MP3 format, and other common questions, see Neuros software onscreen help and our Website www.NeurossAudio.com.

Troubleshooting

| Problem | Solution |
|---|---|
| My PC does not recognize Neuros hardware. | The Neuros is compatible with Windows 98 SE, Me, 2000 and XP. The Neuros USB drivers are NOT compatible with Windows 98. |
| After synchronization is complete, Neuros is not operational – synchronization icon remains. | Disconnect from USB after file transfer is complete. Neuros is not operational when connected via USB. |
| Neuros is not responding to button clicks. Screen is frozen or device stopped working. | <ol style="list-style-type: none">1. Make sure keypad lock is in the down position.2. Reboot Neuros by pressing and holding Up button and Play button at the same time.3. Press and hold Play to restart. |
| MyFi not working | MyFi Off is selected. From the Settings menu, make sure MyFi is set to Auto Detect. |
| MyFi does not have good reception | Plug in earphones and AutoScan again or manually change the frequency for transmission. |
| No HiSi icon or countdown appeared when I tried to take a HiSi sample – spinning record icon appeared | Double-clicked orange button by mistake. Click Back to stop recording. Single click orange button to HiSi. |
| Kept recording the radio when I wanted to make a microphone recording | Make sure you are not in FM mode when initiating a voice recording. |

Support Information

For technical, order, or sales support visit www.NeurosAudio.com/support, or call us toll-free at 1-866-5-Neuros or contact us via email at support@NeurosAudio.com.

For help, like learning how to find and download music, convert your CDs into MP3 format, and answers to other common questions, see Neuros Sync Manager onscreen help and our website www.NeurosAudio.com.

For additional information on how to develop custom Xi scripts, see www.NeurosAudio.com/developers.

For Neuros forums see www.NeurosAudio.com/forums.

Important Safety Information

Warning

- Risk of electrical shock—do not disassemble. No user serviceable parts are inside Neuros. Do not disassemble or modify your Neuros. Refer servicing to qualified professional.
- Do not remove rechargeable battery from the unit.
- To reduce the risk of shock or injury do not use or operate your Neuros near water.
- Do not use in places exposed to strong magnetic or electrostatic fields.
- Never plug the charger/AC adapter into the earphone port.

FCC Rules and Regulations

This equipment has been tested and found to comply with the limits for a Class B digital device, pursuant to Part 15 of the FCC Rules. These limits are designed to provide reasonable protection against harmful interference in a residential installation. This equipment generates, uses and can radiate radio frequency energy and, if not installed and used in accordance with the instructions, may cause harmful interference to radio communications. However, there is no guarantee that interference will not occur in a particular installation. If this equipment does cause harmful interference to radio or television reception, which can be determined by turning the equipment off and on, the user is encouraged to try to correct the interference by one or more of the following measures:

- Reorient or relocate the receiving antenna.
- Increase the separation between the equipment and receiver.
- Connect the equipment into an output on a circuit different from that to which the receiver is connected.
- Consult the dealer or an experienced radio/TV technician for help.
- A shielded cable must be used when connecting a peripheral to the serial ports.

Changes not expressly approved by the party responsible for compliance could void the user's authority to operate the equipment.

Operation is subject to the following two conditions: (1) This device may not cause harmful interference; and (2) this device must accept any interference received, including interference that may cause undesired operation.

Warranty

Neuros Limited Warranty - Parts And Labor

DIGITAL INNOVATIONS, LLC ("DI") warrants your Neuros MP3 digital audio computer and accessories to be free from defects in material and workmanship within the following warranty period, starting from the date of sale to the original consumer purchaser.

90 Days - Labor / 1 Year - Parts

If this product should prove defective within the first NINETY (90) DAY warranty period, DI will repair or replace the product (at its sole discretion) free of charge. Said product must be returned to DI at the consumer's expense and must include dated proof of purchase. In addition, DI will replace any covered part (with a new or re-manufactured part) of this product which proves defective during the next NINE (9) MONTHS after the NINETY (90) DAY labor warranty period. DI warrants replacement products or parts provided under this warranty against defects in materials and workmanship from the date of the replacement or repair for ninety (90) days or for the remaining portion of the original product's warranty, whichever provides longer coverage for you.

This warranty does not apply to any Neuros MP3 digital audio computer and accessories that are used for commercial, rental, or industrial purposes, are damaged by accident, misuse, abuse, improper line voltage, water, lightning, or any acts of God. This warranty is void if product is altered, modified, or if any parts or service covered by this warranty are furnished by anyone other than DI or its Authorized Warranty Station. This warranty does not cover carrying cases, batteries, cosmetic parts, or any other accessories used in connection with the product or consequential damages due to a defect in the product.

ALL IMPLIED WARRANTIES ARE LIMITED TO THE DURATION OF THIS WARRANTY. THIS IS THE COMPLETE WARRANTY BY DI AND NO OTHER WARRANTY, EXPRESS OR IMPLIED, IS VALID AGAINST DI. SOME JURISDICTIONS DO NOT ALLOW LIMITATIONS ON HOW LONG AN IMPLIED WARRANTY LASTS OR AN EXCLUSION OR LIMITATION OF INCIDENTAL OR CONSEQUENTIAL DAMAGES, SO THE ABOVE LIMITATIONS OR EXCLUSIONS MAY NOT APPLY TO YOU.

If your Neuros MP3 digital audio computer or accessories should prove defective during the next NINE (9) MONTHS following the NINETY (90) DAY labor warranty period, contact DI, and on request DI will give you information on where to send your unit for warranty service. Your dated sales receipt or other proof of purchase will establish your eligibility for warranty service. DI will be responsible only for labor or parts, as applicable, rendered under this warranty and not the loss of any unit, or stored data or programs, delivered to DI or its Authorized Warranty Station.

This warranty gives you specific legal rights, and you may have other rights which may vary from jurisdiction to jurisdiction.

DIGITAL INNOVATIONS, LLC
7250 North Cicero Avenue, Suite 100
Lincolnwood, Illinois 60712
PHONE 866-5-NEUROS (866-563-8767)

- KEEP YOUR SALES SLIP WITH THIS WARRANTY STATEMENT -

Index

- AutoScan, 14
- Backpack, 5
- Battery, 4
- Built-in microphone, 20
- Broadcast through FM radio, 14
- Clips (HiSi), 18
- Create MP3 files, 20
- Date, 28
- Delete, 10
- Digital fingerprint, 17
- Extra Information Menu, 10
- FCC, 32
- Features, 2
- Firmware, 29
- FM radio recordings, 20
- Forums, 31
- Get file, 23
- Identifying music samples, 17
- Importing Music, 8
- Line-in recordings, 20
- Memory, 20
- Menus, 11
- Microphone, 20
- Mono, 15
- MyFi, 14
- MyFi settings, 24
- My Mix, 13
- Neuros Radio, 14
- Neuros Synchronization
 - Manager, 6
- PC Library, 11, 22
- Package contents, 4
- Playing, 11
- Playlists, 12
- Presets, 26
- Problems, 30
- Quality, 24
- Quick Start, 3
- Radio, 16
- Recordings, 20
- Remove, 10
- Repeat, 10
- Safety information, 31
- Samples (HiSi), 18
- Sample rate, 20
- Seek, 14
- Settings, 24
- Shuffle, 10, 26
- Software, 6, 29
- Support, 31
- Sync log, 27
- System requirements, 5
- Time, 28
- Tour, 0
- Troubleshooting, 30
- Tune, 14
- Update, 2, 29
- Voice recordings, 20
- Warranty, 33
- Xi, 10

Notes

neuros™

WWW.NEUROSAUDIO.COM

© 2002 Digital Innovations, LLC. All rights reserved.

Digital Innovations, Neuros, Neuros HD, MyFi, HiSi, and Xi are trademarks or registered trademarks of Digital Innovations, LLC, Chicago, Illinois and may be registered in some jurisdictions.

Download from Www.Sematerials.com. All Manuals Search And Download.

Free Manuals Download Website

<http://myh66.com>

<http://usermanuals.us>

<http://www.somanuals.com>

<http://www.4manuals.cc>

<http://www.manual-lib.com>

<http://www.404manual.com>

<http://www.luxmanual.com>

<http://aubethermostatmanual.com>

Golf course search by state

<http://golfingnear.com>

Email search by domain

<http://emailbydomain.com>

Auto manuals search

<http://auto.somanuals.com>

TV manuals search

<http://tv.somanuals.com>